

Classified Point Cloud

Deliverable 1 Summary

✓ General		
Folder:	G:\USGS_Oklahoma_UTM14_LiDAR\point_cloud\tilecls	
Total # of Files:	7,696	(All Valid)
Total File Size:	1.9 TB	(2,131,564,094,474 bytes)

✓ Tile Sizes	
Median Tile Size:	1,500m x 1,500m
Minimum Tile Size:	1,312m x 1,371m
Maximum Tile Size:	1,500m x 1,500m
X Range:	408000.00m to 650999.99m
Y Range:	3817500.00m to 4096499.99m
Elevation Range:	185.41m to 922.76m

✓ LAS Version And Point Record Formats	
v1.4, Point Record Format 6	7,696 of 7,696 Tiles

✓ Spatial Reference System		
Horizontal Projection	NAD83(2011) / UTM zone 14N	7,696 of 7,696 Tiles
Horizontal Datum	NAD83 (National Spatial Reference System 2011)	7,696 of 7,696 Tiles
Horizontal Units	meter	7,696 of 7,696 Tiles
Vertical Datum	NAVD88 height	7,696 of 7,696 Tiles
Vertical Units	meter	7,696 of 7,696 Tiles
Storage Method	WKT	7,696 of 7,696 Tiles

✓ GPS Time Type	
Adjusted	7,696 of 7,696 Tiles

✓ File Source ID Equals 0	
Yes	7,696 of 7,696 Tiles

✓ VLR/EVLR Reserved Equals 0	
Yes	30,469 of 30,469 Records

✓ Unnecessary Bytes At End Of File	
No	7,696 of 7,696 Tiles

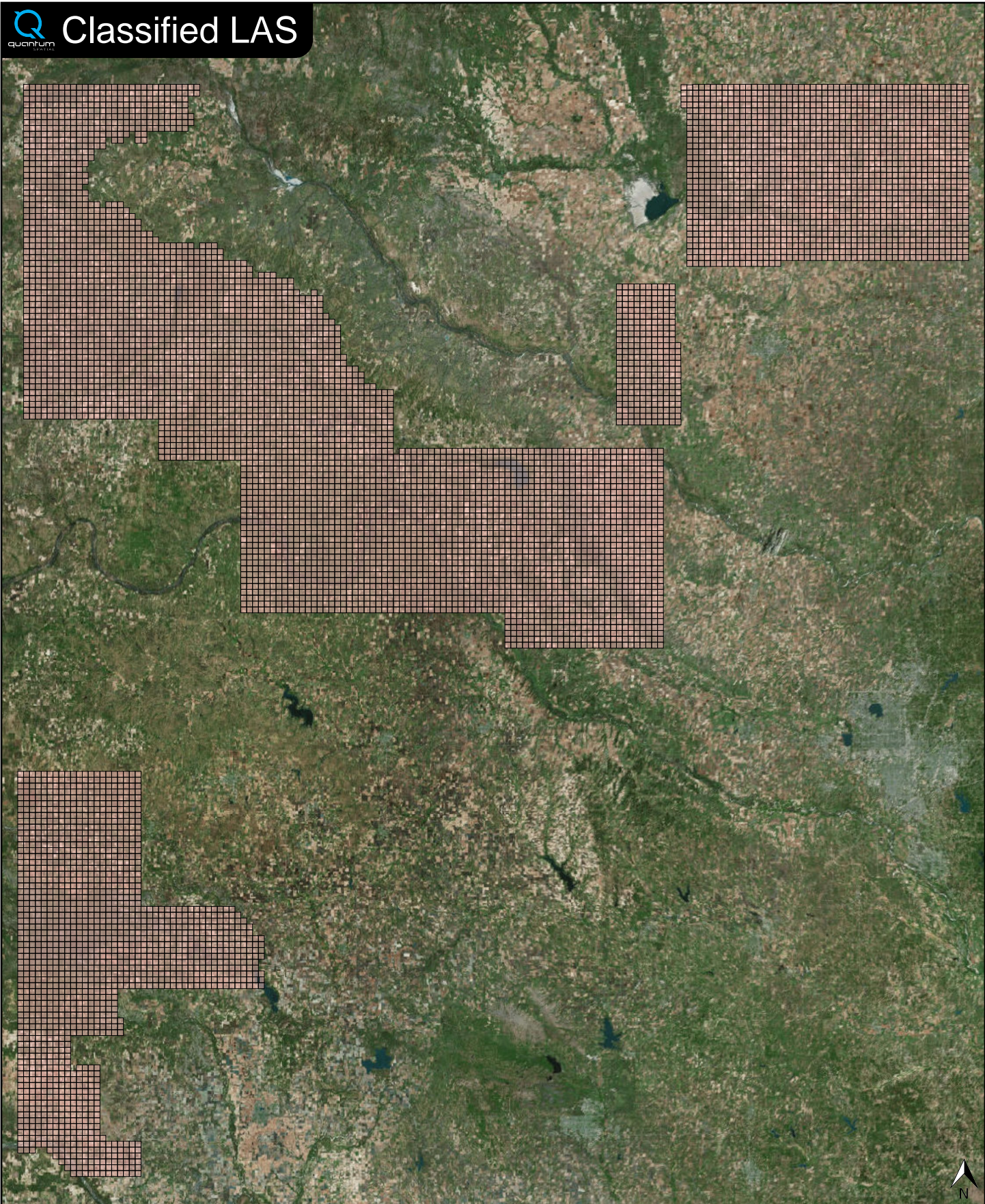
✓ Legacy Point Count Check	
Zero	7,696 of 7,696 Tiles

✓ System Identifier	
Quantum Spatial	7,696 of 7,696 Tiles

✓ Generating Software	
LiDAR Suite	7,696 of 7,696 Tiles



Classified LAS



Classified LAS Tiles (7,696)

