

Classified Point Cloud

Deliverable 1 Summary

✓ General		
Folder:	E:\183621\OR_NRCSUSGS_4_2019\point_cloud\tilecls	
Total # of Files:	6,464	(All Valid)
Total File Size:	1.8 TB	(2,026,327,154,484 bytes)

✓ Tile Sizes		
Median Tile Size:	3,000' x 3,000'	
Minimum Tile Size:	8' x 3'	
Maximum Tile Size:	3,000' x 3,000'	
X Range:	1198946.38' to 1547208.58'	
Y Range:	1137139.01' to 1479665.77'	
Elevation Range:	-485.40' to 5385.10'	

✓ LAS Version And Point Record Formats		
v1.4, Point Record Format 6	6,464 of 6,464 Tiles	

✓ Spatial Reference System		
Horizontal Projection	NAD83(2011) / Oregon GIC Lambert (ft)	6,464 of 6,464 Tiles
Horizontal Datum	NAD83 (National Spatial Reference System 2011)	6,464 of 6,464 Tiles
Horizontal Units	foot	6,464 of 6,464 Tiles
Vertical Datum	NAVD88 height (ft) - Geoid12B (ft)	6,464 of 6,464 Tiles
Vertical Units	foot	6,464 of 6,464 Tiles
Vertical USGS-Compliant	Yes	6,464 of 6,464 Tiles
Geoid	Geoid12B	6,464 of 6,464 Tiles
Storage Method	WKT	6,464 of 6,464 Tiles
Matches OGC Template	Yes	6,464 of 6,464 Tiles

✓ GPS Time Type		
Adjusted	6,464 of 6,464 Tiles	

✓ File Source ID Equals 0		
Yes	6,464 of 6,464 Tiles	

✓ VLR/EVLR Reserved Equals 0		
Yes	25,856 of 25,856 Records	

✓ Unnecessary Bytes At End Of File		
No	6,464 of 6,464 Tiles	

✓ Legacy Point Count Check		
Zero	6,464 of 6,464 Tiles	

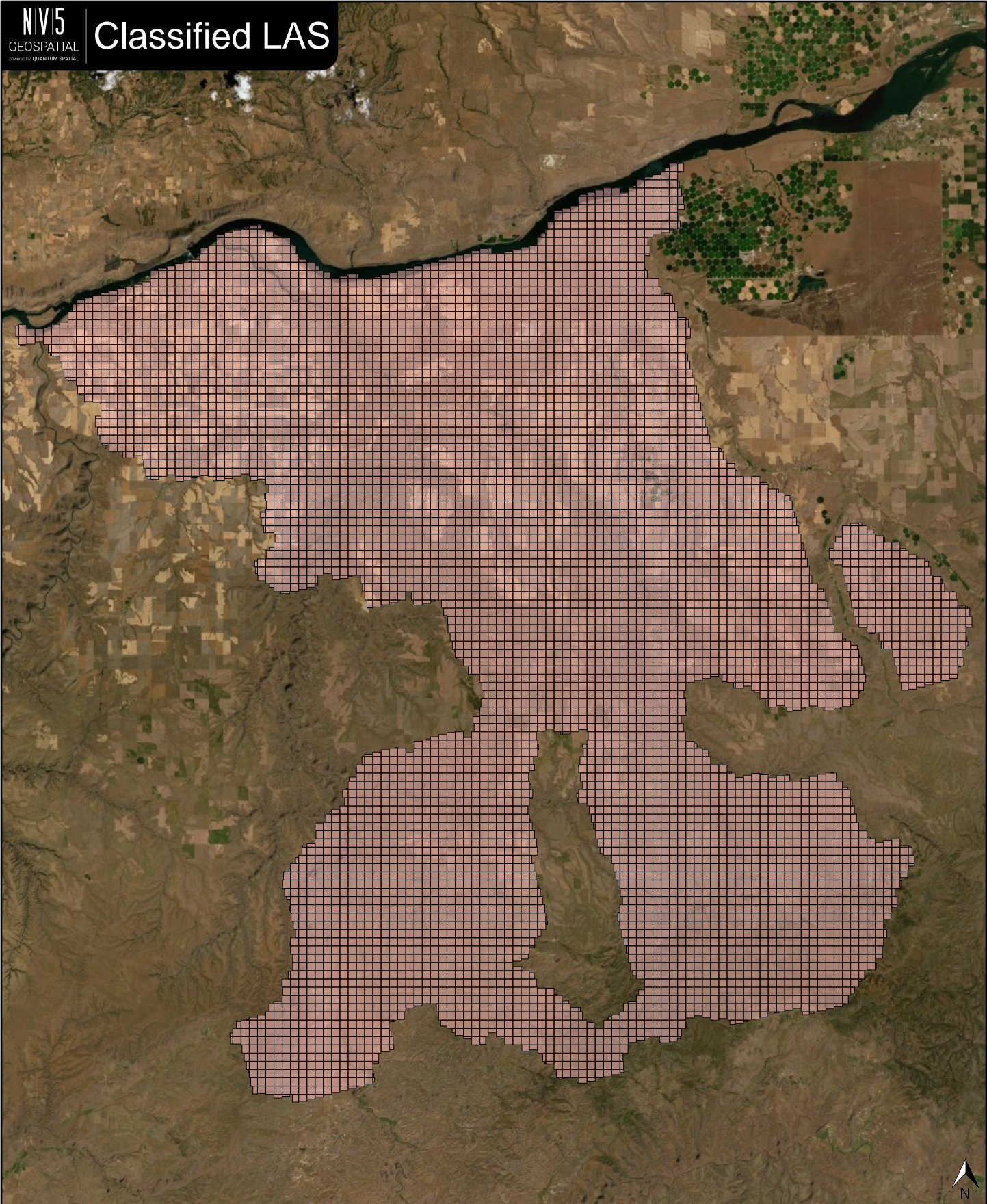
✓ System Identifier		
Merge	6,464 of 6,464 Tiles	

Classified Point Cloud Continued...

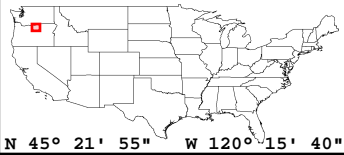
Deliverable 1 Summary

✓ Generating Software	
LiDAR Suite	6,464 of 6,464 Tiles

Classified LAS



Classified LAS Tiles (6,464)

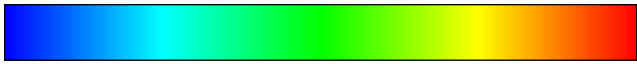
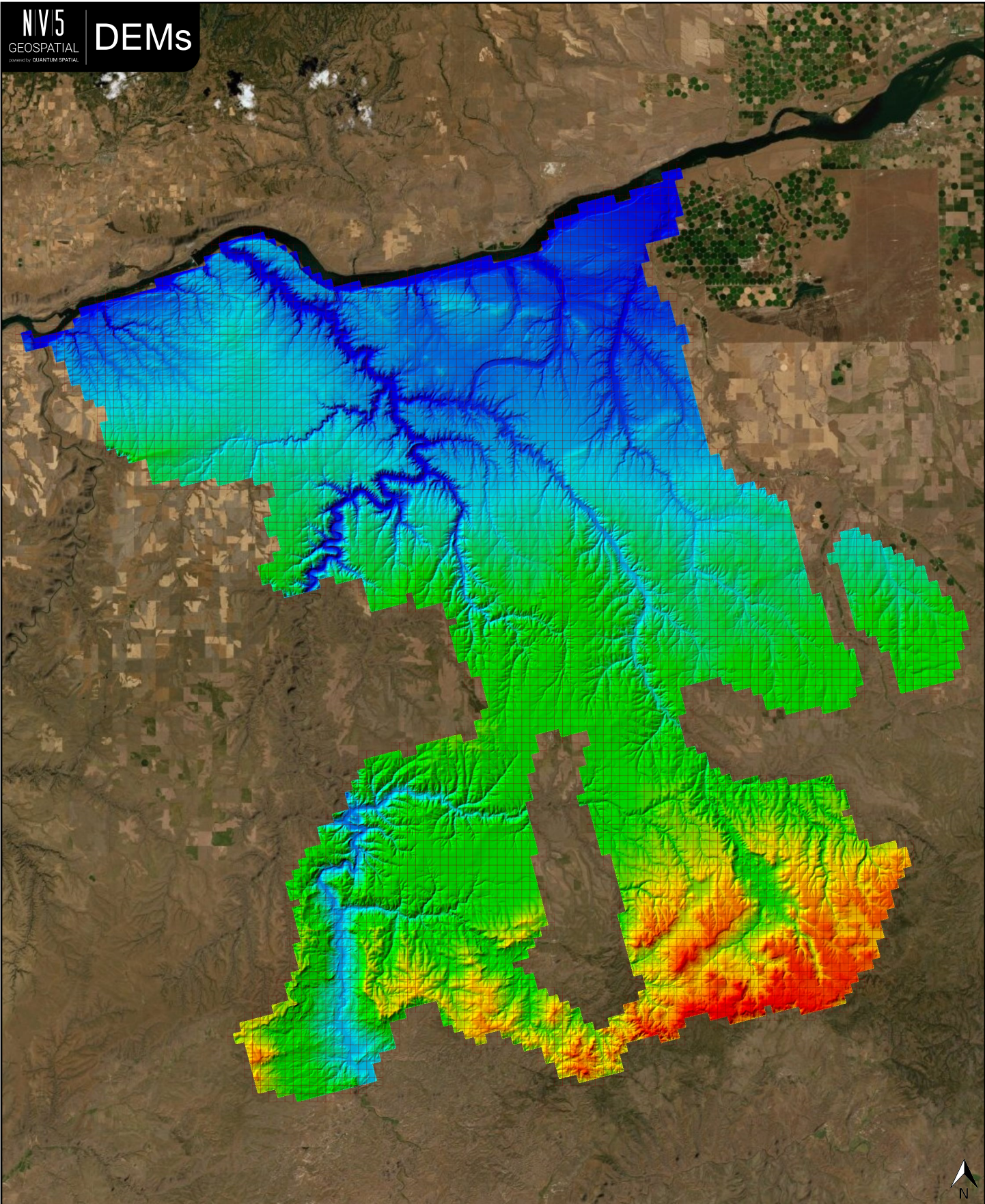


✓ General		
Folder:	E:\183621\OR_NRCSUSGS_4_2019\bare_earth\be_rasters	
Total # of Files:	6,466	(All Valid)
Total File Size:	25.3 GB	(27,145,186,172 bytes)

✓ Tile Sizes	
Median Tile Size:	3,000' x 3,000'
Minimum Tile Size:	3,000' x 3,000'
Maximum Tile Size:	3,000' x 3,000'
X Range:	1197000.00' to 1548000.00'
Y Range:	1137000.00' to 1482000.00'

✓ Spatial Reference System		
Horizontal Projection	NAD83(2011) / Oregon GIC Lambert (ft)	6,466 of 6,466 Tiles
Horizontal Datum	NAD83 (National Spatial Reference System 2011)	6,466 of 6,466 Tiles
Horizontal Units	foot	6,466 of 6,466 Tiles
Vertical Datum	NAVD88 height (ft) - Geoid12B (ft)	6,466 of 6,466 Tiles
Vertical Units	foot	6,466 of 6,466 Tiles
Vertical USGS-Compliant	Yes	6,466 of 6,466 Tiles
GDAL 2.x Compatible	Yes	6,466 of 6,466 Tiles
Geoid	Geoid12B	6,466 of 6,466 Tiles
Matches OGC Template	Yes	6,466 of 6,466 Tiles

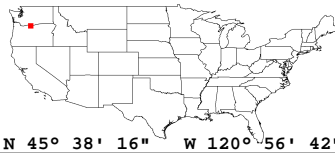
✓ Raster		
File Type:	TIF	6,466 of 6,466
Bands:	1	6,466 of 6,466
Grid Size (pixels):	1000 x 1000	6,466 of 6,466
Pixel Resolution:	3.00000000' x 3.00000000'	6,466 of 6,466
Pixel Type:	32-bit	6,466 of 6,466
Compression:	None	6,466 of 6,466
No Data Value:	-999999	6,466 of 6,466



162.30 ft

2661.91 ft

5161.52 ft



Scale 1:864

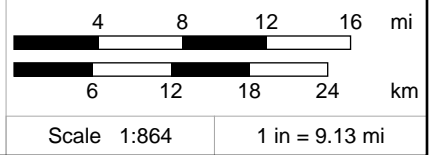
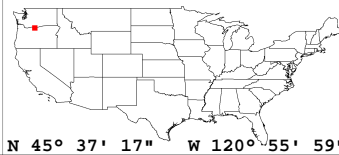
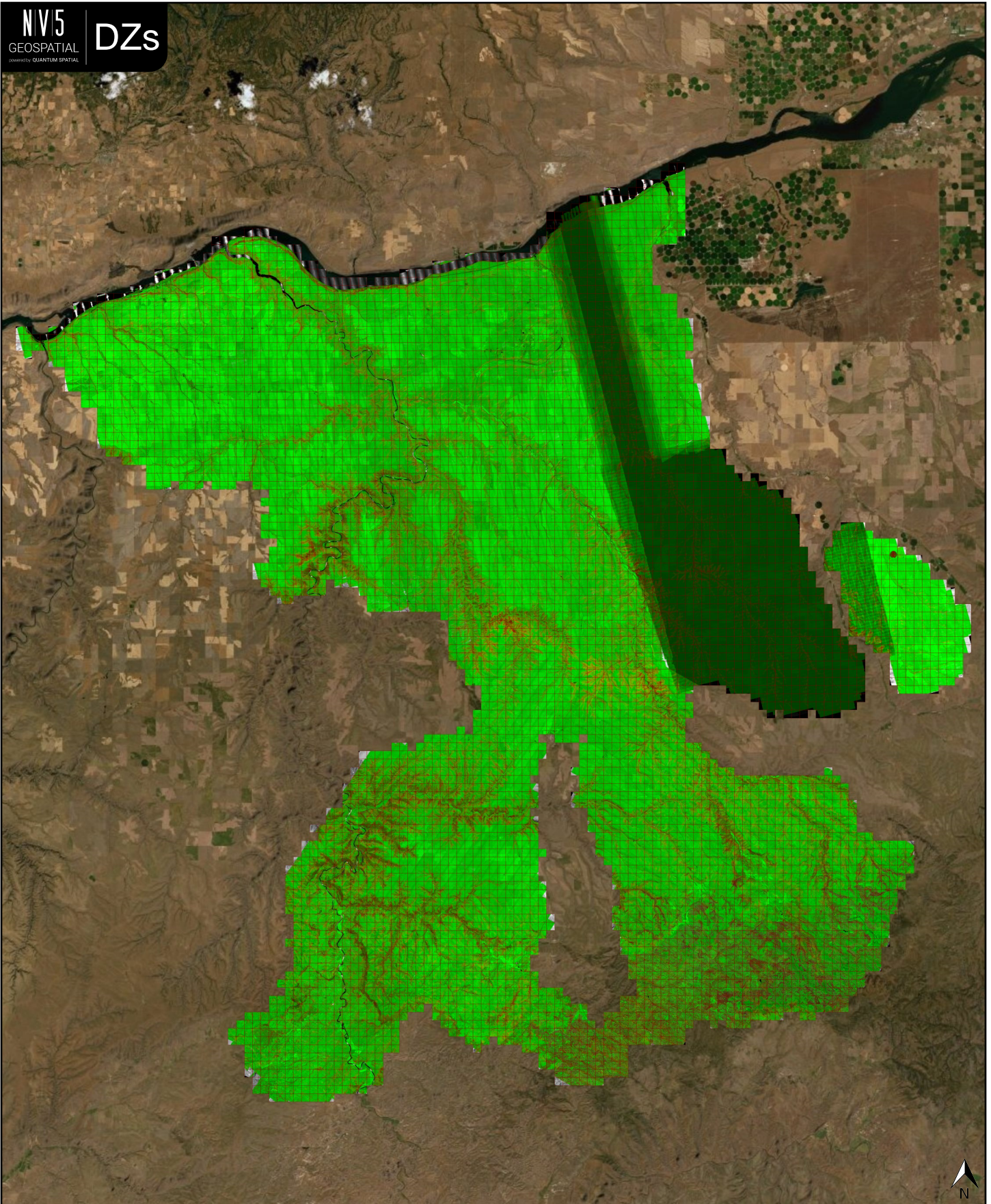
1 in = 9.13 mi

✓ General		
Folder:	E:\183621\OR_NRCSUSGS_4_2019\metadata\spatial_metadata\contractor_provided\swath_separation_images	
Total # of Files:	6,464	(All Valid)
Total File Size:	25.8 GB	(27,655,538,816 bytes)

✓ Tile Sizes	
Median Tile Size:	3,000' x 3,000'
Minimum Tile Size:	3,000' x 3,000'
Maximum Tile Size:	3,000' x 3,000'
X Range:	1197000.00' to 1548000.00'
Y Range:	1137000.00' to 1482000.00'

✓ Spatial Reference System		
Horizontal Projection	NAD_1983_2011_Oregon_Statewide_Lambert_Ft_Intl	6,464 of 6,464 Tiles
Horizontal Datum	D_NAD_1983_2011	6,464 of 6,464 Tiles
Horizontal Units	Foot	6,464 of 6,464 Tiles
Vertical Datum	NONE	6,464 of 6,464 Tiles
Vertical Units	NONE	6,464 of 6,464 Tiles
Geoid	NONE	6,464 of 6,464 Tiles

✓ Raster		
File Type:	TIF	6,464 of 6,464
Bands:	3	6,464 of 6,464
Grid Size (pixels):	1000 x 1000	6,464 of 6,464
Pixel Resolution:	3.00000000' x 3.00000000'	6,464 of 6,464
Pixel Type:	8-bit Unsigned Integer (RGB)	6,464 of 6,464
Compression:	NONE	6,464 of 6,464
No Data Value:	NONE	6,464 of 6,464



✓ General		
Folder:	E:\183621\OR_NRCSUSGS_4_2019\other\intensity_images	
Total # of Files:	6,464	(All Valid)
Total File Size:	8.6 GB	(9,227,398,784 bytes)

✓ Tile Sizes	
Median Tile Size:	3,000' x 3,000'
Minimum Tile Size:	3,000' x 3,000'
Maximum Tile Size:	3,000' x 3,000'
X Range:	1197000.00' to 1548000.00'
Y Range:	1137000.00' to 1482000.00'

✓ Spatial Reference System		
Horizontal Projection	NAD_1983_2011_Oregon_Statewide_Lambert_Ft_Intl	6,464 of 6,464 Tiles
Horizontal Datum	D_NAD_1983_2011	6,464 of 6,464 Tiles
Horizontal Units	Foot	6,464 of 6,464 Tiles
Vertical Datum	NONE	6,464 of 6,464 Tiles
Vertical Units	NONE	6,464 of 6,464 Tiles
Geoid	NONE	6,464 of 6,464 Tiles

✓ Raster		
File Type:	TIF	6,464 of 6,464
Bands:	1	6,464 of 6,464
Grid Size (pixels):	1000 x 1000	6,464 of 6,464
Pixel Resolution:	3.00000000' x 3.00000000'	6,464 of 6,464
Pixel Type:	8-bit Unsigned Integer (MINISBLACK)	6,464 of 6,464
Compression:	NONE	6,464 of 6,464
No Data Value:	NONE	6,464 of 6,464

