

FOCUS on Accuracy

South_West_Central_Sycan

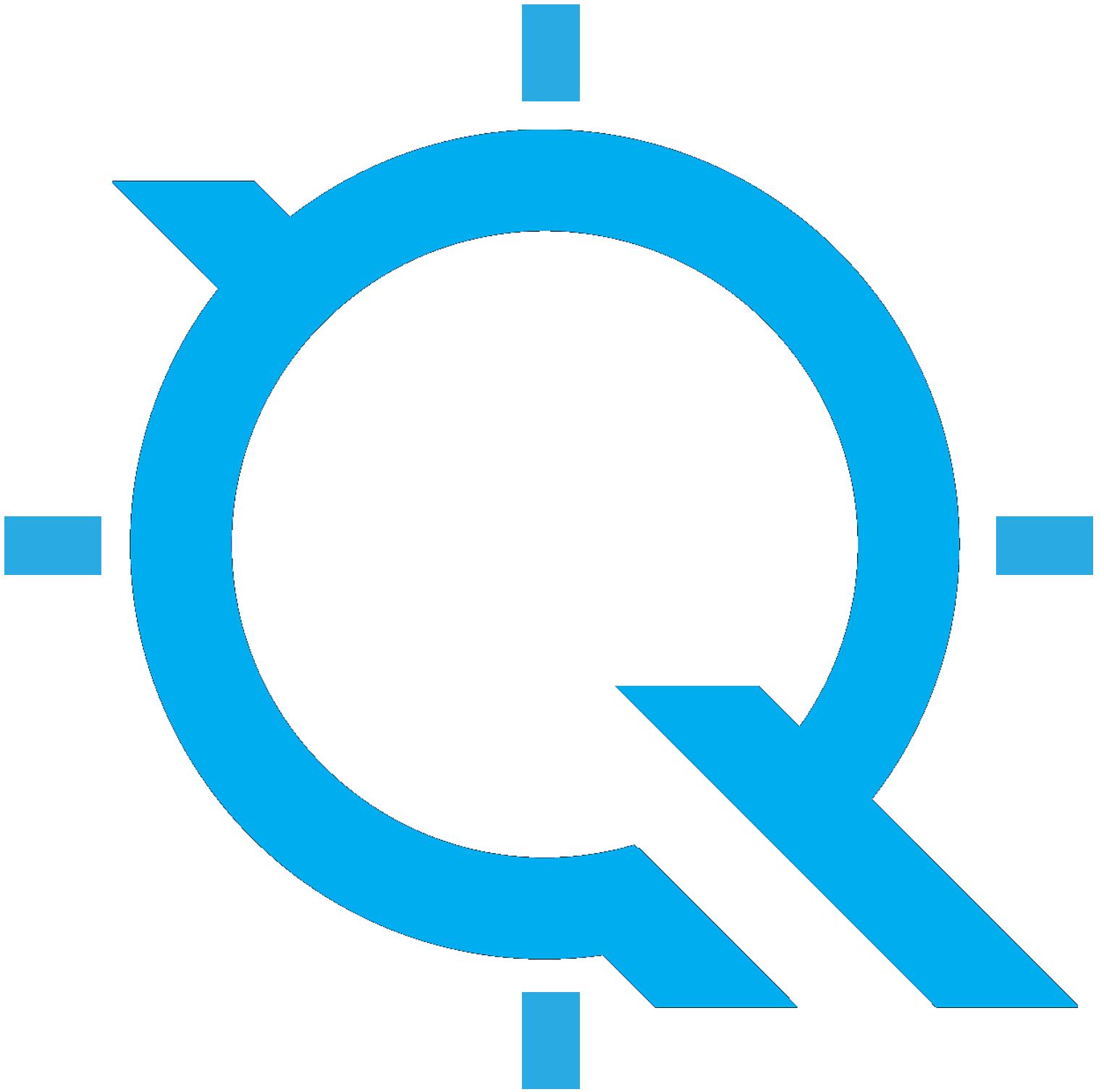
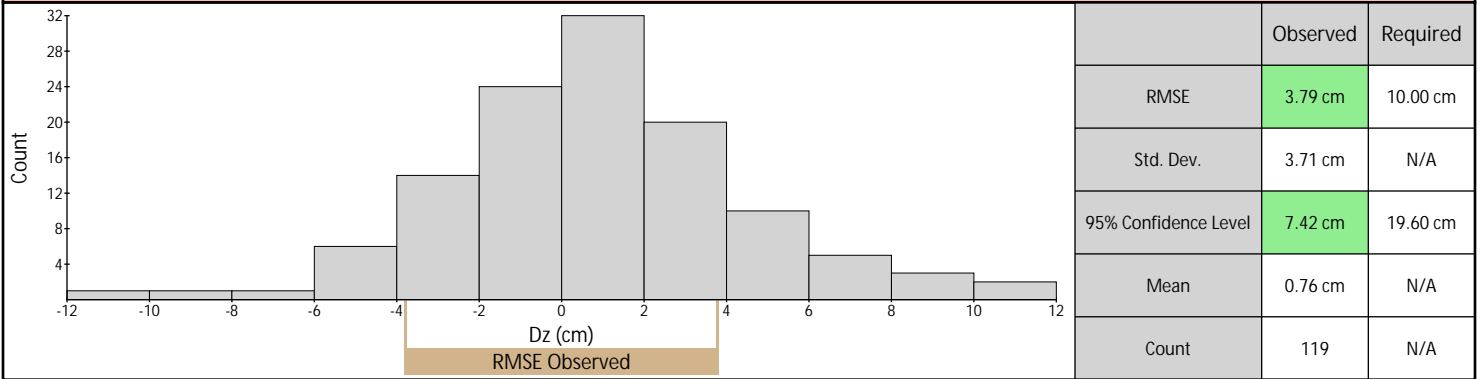


Table of Contents

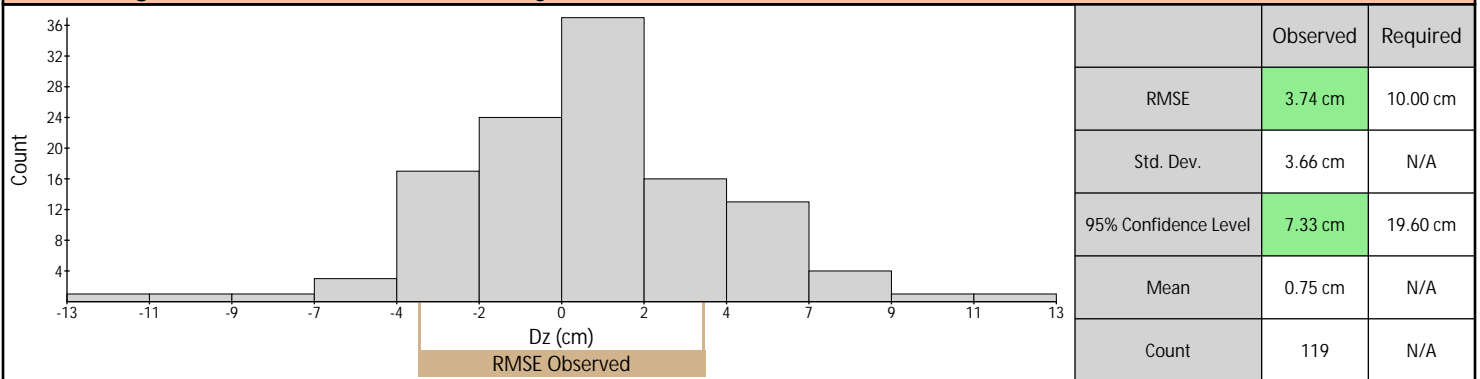
Vertical Accuracy Assessment	3
Control Point Locations	5
Control Point Breakdown	7

Vertical Accuracy Assessment

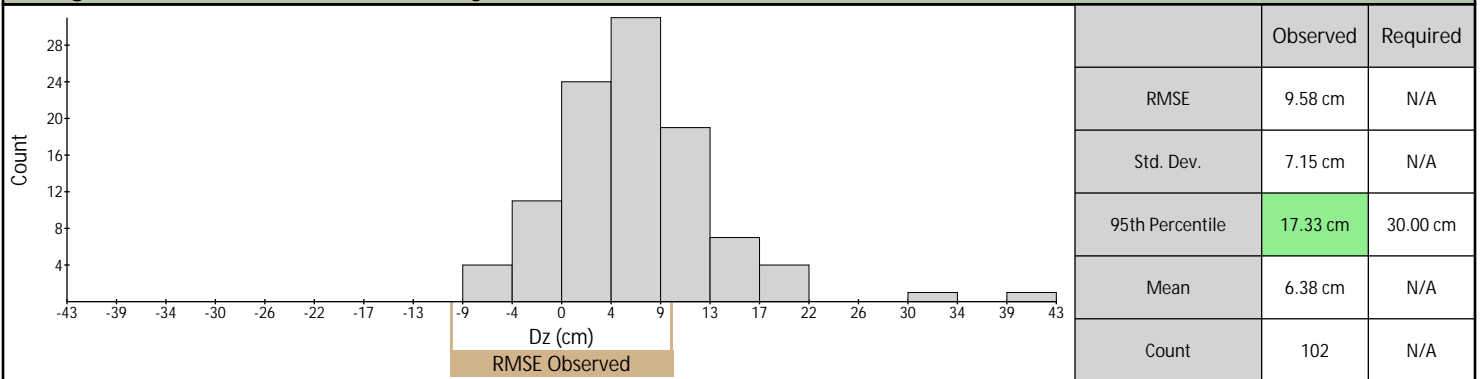
Nonvegetated Vertical Accuracy (Ground LAS)



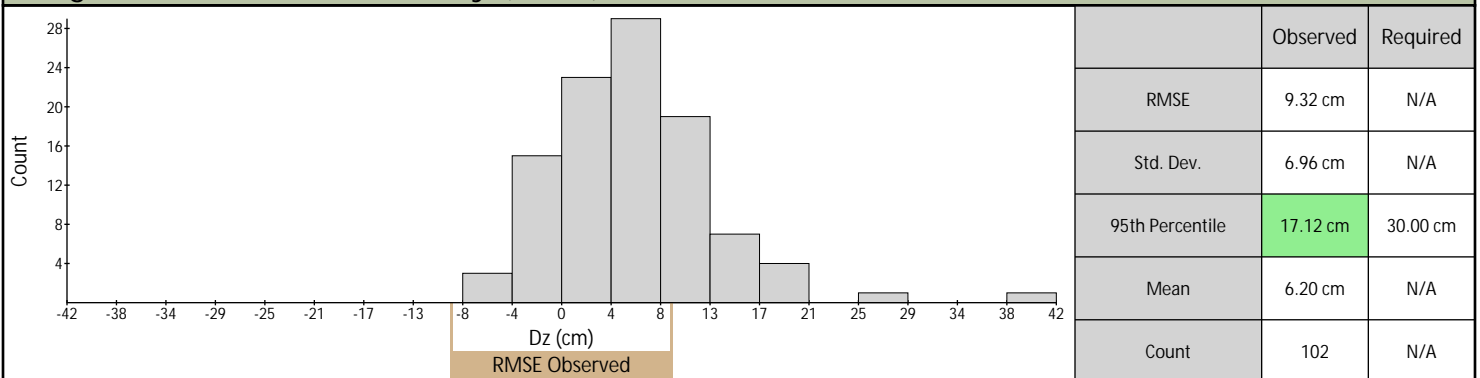
Nonvegetated Vertical Accuracy (DEM)



Vegetated Vertical Accuracy (Ground LAS)

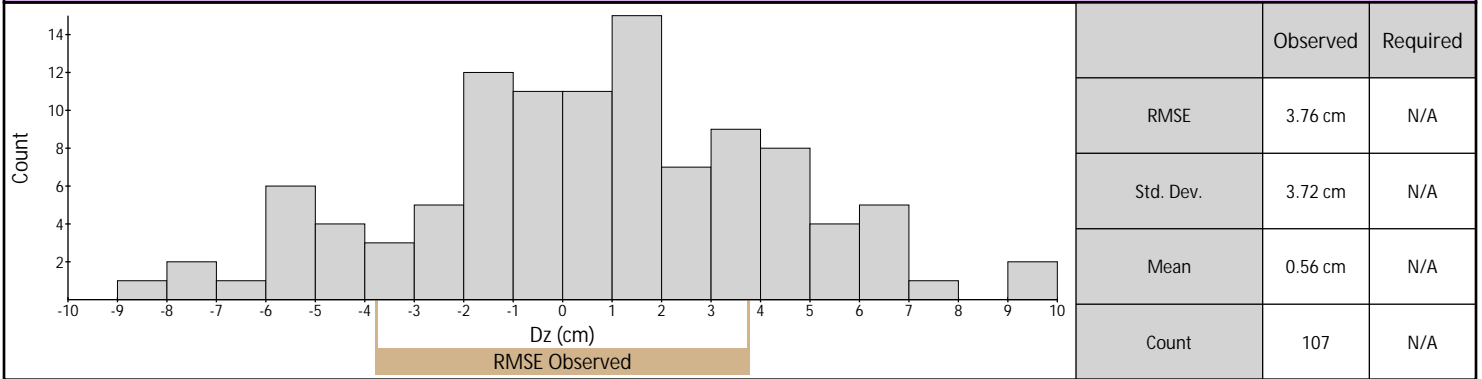


Vegetated Vertical Accuracy (DEM)

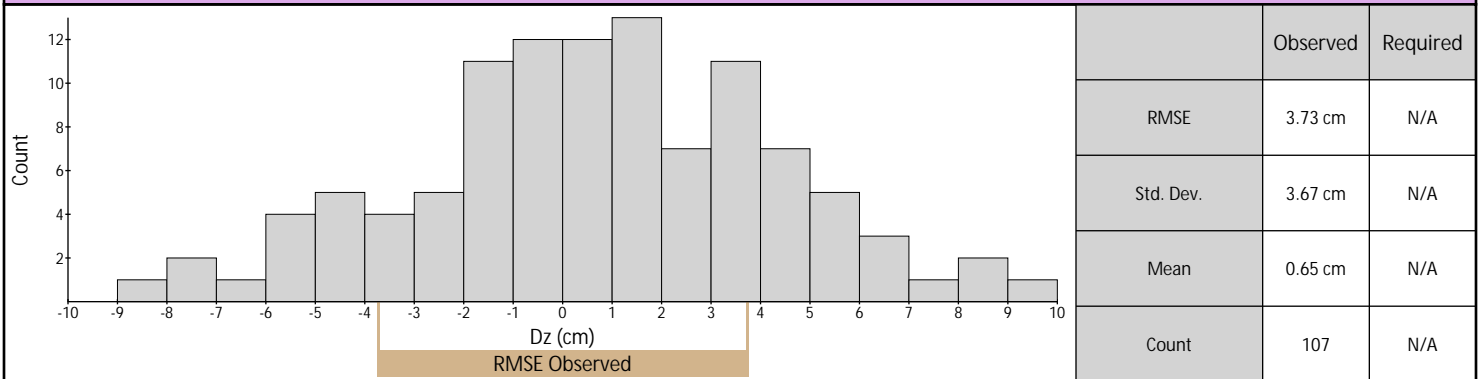


Vertical Accuracy Assessment (continued)

Calibration (Ground LAS)

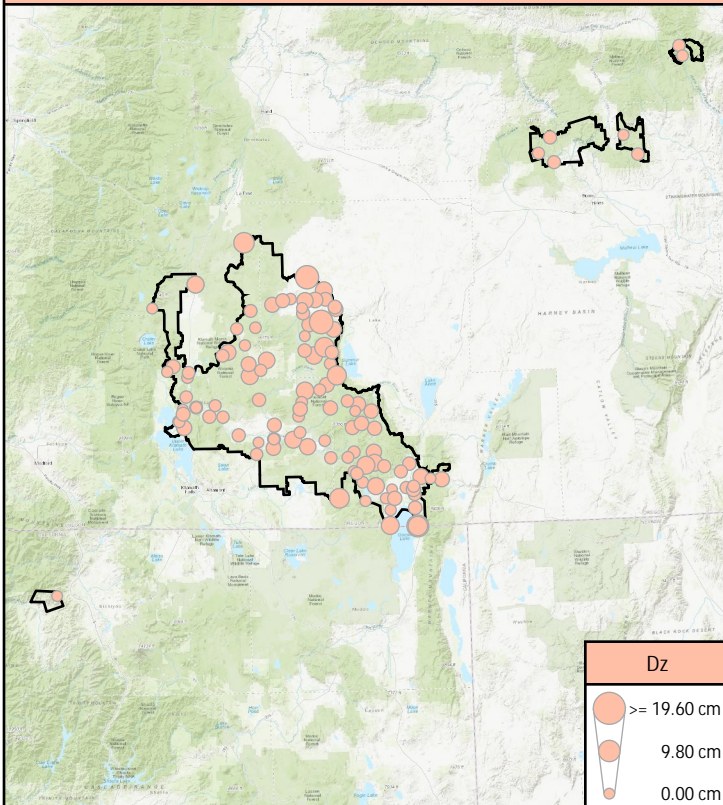


Calibration (DEM)

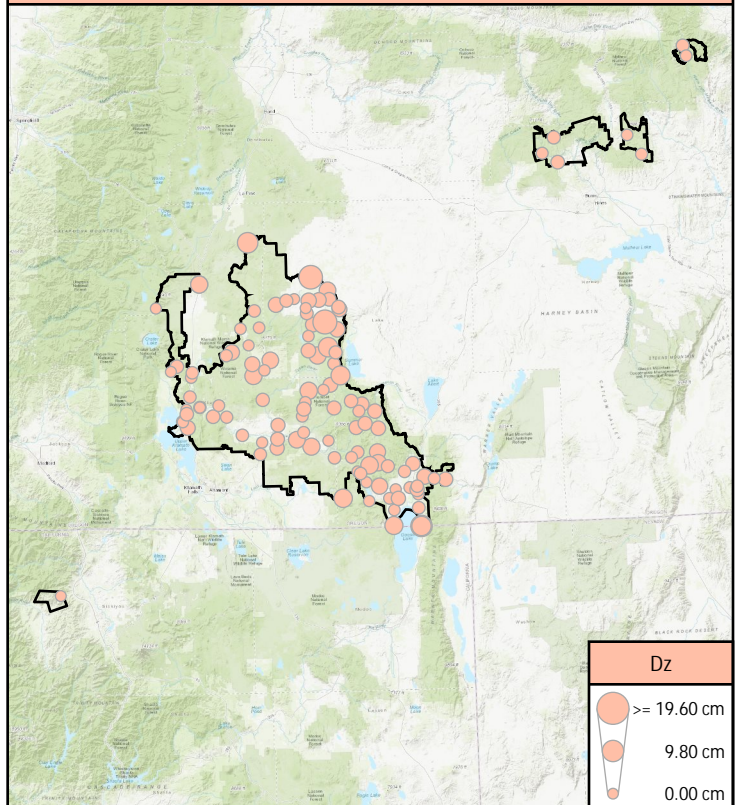


Control Point Locations

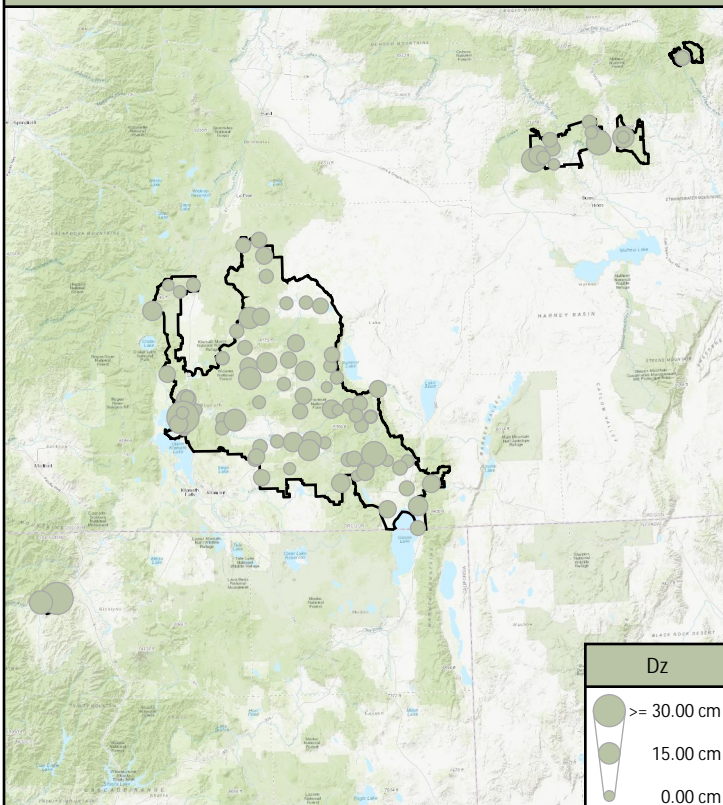
Nonvegetated Vertical Accuracy (Ground LAS)



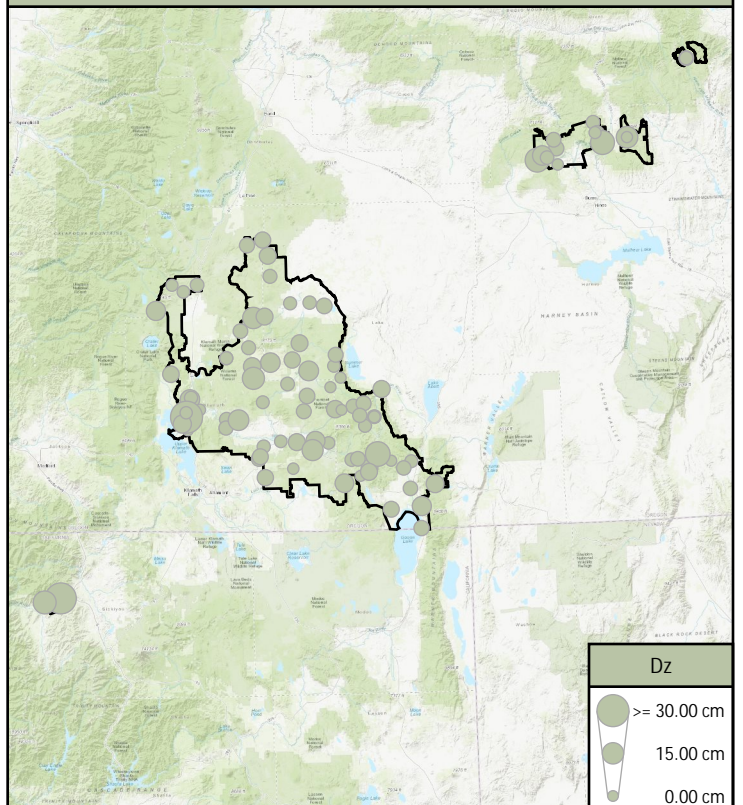
Nonvegetated Vertical Accuracy (DEM)



Vegetated Vertical Accuracy (Ground LAS)

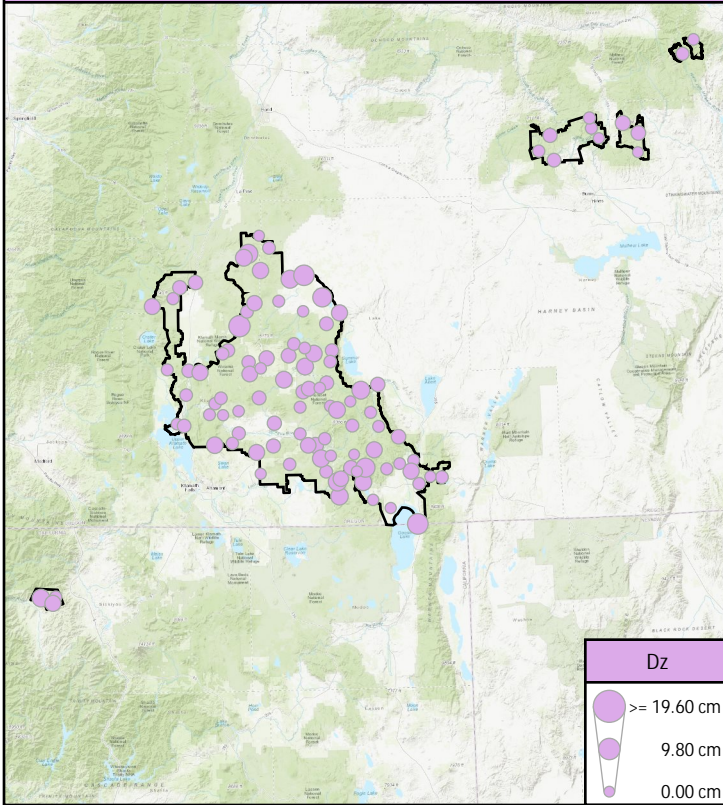


Vegetated Vertical Accuracy (DEM)

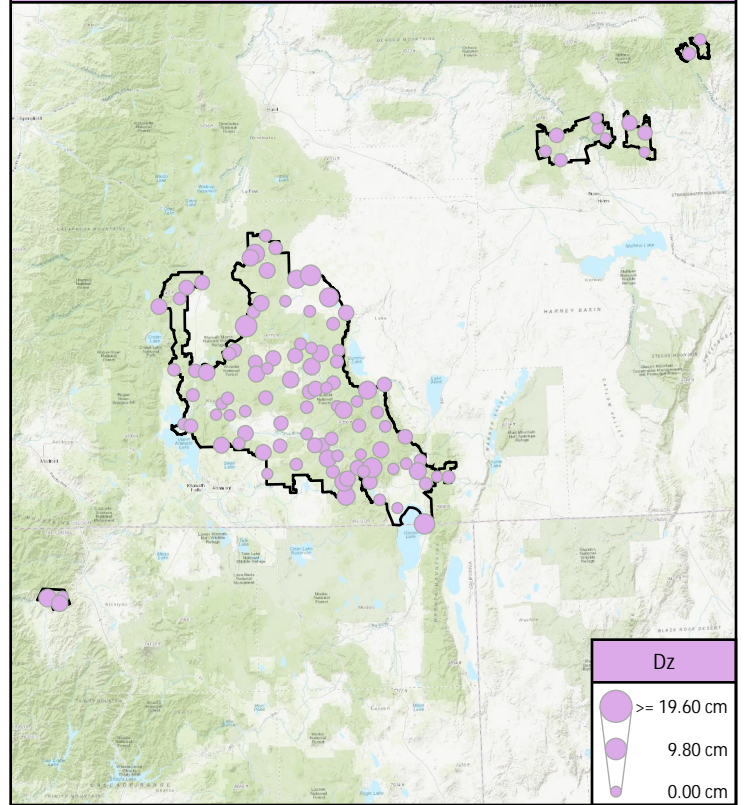


Control Point Locations (continued)

Calibration (Ground LAS)



Calibration (DEM)



Control Point Breakdown

Point	Type	Project	Ground (LAS Points)				DEM Dz
			Dz	Density	Nearest	Slope	
BE001	NVA	South West Central Sycan	6.02 cm	8.24 ppsm	0.10 m	4.85°	6.00 cm
BE002	NVA	South West Central Sycan	1.96 cm	8.28 ppsm	0.07 m	3.04°	1.64 cm
BE003	NVA	South West Central Sycan	2.80 cm	6.40 ppsm	0.30 m	1.82°	2.45 cm
BE004	NVA	South West Central Sycan	2.29 cm	9.80 ppsm	0.07 m	3.72°	1.60 cm
BE005	NVA	South West Central Sycan	0.00 cm	8.21 ppsm	0.25 m	6.84°	0.47 cm
BE006	NVA	South West Central Sycan	-0.51 cm	6.93 ppsm	0.32 m	1.01°	-0.67 cm
BE007	NVA	South West Central Sycan	5.35 cm	10.22 ppsm	0.23 m	3.04°	5.41 cm
BE008	NVA	South West Central Sycan	-1.96 cm	13.55 ppsm	0.05 m	3.84°	-1.97 cm
BE010	NVA	South West Central Sycan	-0.95 cm	8.38 ppsm	0.12 m	6.56°	-1.47 cm
BE011	NVA	South West Central Sycan	6.20 cm	7.60 ppsm	0.09 m	3.15°	6.08 cm
BE012	NVA	South West Central Sycan	-1.34 cm	12.24 ppsm	0.13 m	5.71°	-1.11 cm
BE013	NVA	South West Central Sycan	2.49 cm	12.66 ppsm	0.14 m	5.71°	1.74 cm
BE014	NVA	South West Central Sycan	10.33 cm	12.03 ppsm	0.17 m	0.86°	9.81 cm
BE015	NVA	South West Central Sycan	3.83 cm	9.97 ppsm	0.28 m	9.37°	3.73 cm
BE016	NVA	South West Central Sycan	4.69 cm	6.76 ppsm	0.25 m	3.72°	4.40 cm
BE017	NVA	South West Central Sycan	-3.49 cm	8.28 ppsm	0.18 m	4.85°	-3.62 cm
BE018	NVA	South West Central Sycan	-3.39 cm	11.28 ppsm	0.10 m	3.84°	-3.46 cm
BE019	NVA	South West Central Sycan	6.19 cm	8.10 ppsm	0.11 m	1.22°	6.02 cm
BE020	NVA	South West Central Sycan	0.83 cm	12.45 ppsm	0.18 m	2.58°	0.37 cm
BE021	NVA	South West Central Sycan	-5.79 cm	7.75 ppsm	0.21 m	3.44°	-5.44 cm
BE023	NVA	South West Central Sycan	0.65 cm	6.97 ppsm	0.12 m	5.71°	0.13 cm
BE024	NVA	South West Central Sycan	6.60 cm	10.54 ppsm	0.19 m	0.81°	6.74 cm
BE025	NVA	South West Central Sycan	1.30 cm	9.94 ppsm	0.08 m	2.58°	0.58 cm
BE026	NVA	South West Central Sycan	4.00 cm	7.64 ppsm	0.08 m	7.41°	4.14 cm
BE027	NVA	South West Central Sycan	0.38 cm	7.92 ppsm	0.15 m	6.25°	0.76 cm
BE028	NVA	South West Central Sycan	0.89 cm	8.88 ppsm	0.14 m	5.05°	0.76 cm
BE029	NVA	South West Central Sycan	2.83 cm	7.67 ppsm	0.10 m	7.45°	2.87 cm
BE030	NVA	South West Central Sycan	-4.65 cm	14.22 ppsm	0.08 m	2.23°	-4.40 cm

Control Point Breakdown (continued)

Point	Type	Project	Ground (LAS Points)				DEM Dz
			Dz	Density	Nearest	Slope	
BE031	NVA	South West Central Sycan	3.89 cm	23.45 ppsm	0.14 m	4.25°	3.43 cm
BE032	NVA	South West Central Sycan	1.46 cm	9.58 ppsm	0.13 m	2.86°	2.04 cm
BE033	NVA	South West Central Sycan	4.30 cm	14.47 ppsm	0.12 m	3.43°	5.03 cm
BE034	NVA	South West Central Sycan	-4.10 cm	7.36 ppsm	0.14 m	7.65°	-3.79 cm
BE035	NVA	South West Central Sycan	2.37 cm	7.04 ppsm	0.07 m	1.43°	2.63 cm
BE036	NVA	South West Central Sycan	1.42 cm	6.83 ppsm	0.12 m	9.93°	0.76 cm
BE037	NVA	South West Central Sycan	0.15 cm	8.88 ppsm	0.18 m	3.04°	0.32 cm
BE038	NVA	South West Central Sycan	-1.47 cm	15.38 ppsm	0.13 m	2.86°	-1.80 cm
BE039	NVA	South West Central Sycan	-7.68 cm	8.45 ppsm	0.13 m	1.72°	-7.59 cm
BE040	NVA	South West Central Sycan	5.65 cm	15.60 ppsm	0.19 m	4.85°	5.25 cm
BE041	NVA	South West Central Sycan	0.00 cm	8.24 ppsm	0.13 m	3.72°	0.41 cm
BE042	NVA	South West Central Sycan	0.54 cm	9.41 ppsm	0.18 m	4.00°	0.27 cm
BE043	NVA	South West Central Sycan	4.64 cm	8.77 ppsm	0.07 m	1.72°	4.44 cm
BE044	NVA	South West Central Sycan	-2.43 cm	12.41 ppsm	0.07 m	7.85°	-3.46 cm
BE045	NVA	South West Central Sycan	0.29 cm	12.24 ppsm	0.17 m	4.29°	0.94 cm
BE046	NVA	South West Central Sycan	5.18 cm	10.04 ppsm	0.10 m	3.72°	5.88 cm
BE047	NVA	South West Central Sycan	1.43 cm	9.05 ppsm	0.10 m	1.15°	1.66 cm
BE048	NVA	South West Central Sycan	8.10 cm	8.91 ppsm	0.22 m	2.43°	8.09 cm
BE049	NVA	South West Central Sycan	-0.50 cm	12.45 ppsm	0.14 m	1.72°	-0.73 cm
BE050	NVA	South West Central Sycan	-1.99 cm	7.22 ppsm	0.16 m	5.99°	-1.47 cm
BE051	NVA	South West Central Sycan	-3.97 cm	13.37 ppsm	0.15 m	2.02°	-3.50 cm
BE052	NVA	South West Central Sycan	0.10 cm	17.01 ppsm	0.08 m	2.00°	1.05 cm
BE053	NVA	South West Central Sycan	0.86 cm	7.39 ppsm	0.23 m	1.42°	0.77 cm
BE054	NVA	South West Central Sycan	-1.07 cm	7.32 ppsm	0.21 m	4.65°	-0.88 cm
BE055	NVA	South West Central Sycan	-0.41 cm	8.28 ppsm	0.13 m	3.44°	-0.22 cm
BE056	NVA	South West Central Sycan	-0.02 cm	16.13 ppsm	0.08 m	2.58°	1.12 cm
BE057	NVA	South West Central Sycan	-3.28 cm	16.27 ppsm	0.11 m	1.72°	-3.62 cm
BE059	NVA	South West Central Sycan	2.29 cm	7.50 ppsm	0.17 m	1.42°	2.27 cm

Control Point Breakdown (continued)

Point	Type	Project	Ground (LAS Points)				DEM Dz
			Dz	Density	Nearest	Slope	
BE060	NVA	South West Central Sycan	6.60 cm	12.63 ppsm	0.07 m	1.43°	6.29 cm
BE061	NVA	South West Central Sycan	-1.90 cm	9.69 ppsm	0.04 m	1.22°	-1.37 cm
BE062	NVA	South West Central Sycan	0.30 cm	12.98 ppsm	0.05 m	2.02°	-0.55 cm
BE063	NVA	South West Central Sycan	-0.82 cm	7.04 ppsm	0.14 m	3.64°	-0.89 cm
BE064	NVA	South West Central Sycan	2.37 cm	8.88 ppsm	0.13 m	5.71°	2.15 cm
BE065	NVA	South West Central Sycan	1.20 cm	8.24 ppsm	0.29 m	1.22°	1.16 cm
BE067	NVA	South West Central Sycan	2.09 cm	7.67 ppsm	0.26 m	3.15°	2.68 cm
BE068	NVA	South West Central Sycan	0.82 cm	18.36 ppsm	0.06 m	4.57°	0.31 cm
BE069	NVA	South West Central Sycan	3.36 cm	15.70 ppsm	0.08 m	4.86°	3.08 cm
BE070	NVA	South West Central Sycan	-1.64 cm	8.45 ppsm	0.10 m	2.83°	-1.21 cm
BE071	NVA	South West Central Sycan	-0.09 cm	8.77 ppsm	0.06 m	2.83°	0.68 cm
BE072	NVA	South West Central Sycan	-11.55 cm	7.96 ppsm	0.20 m	2.00°	-11.82 cm
BE073	NVA	South West Central Sycan	0.09 cm	10.79 ppsm	0.14 m	2.02°	1.12 cm
BE074	NVA	South West Central Sycan	3.63 cm	7.78 ppsm	0.20 m	2.02°	3.27 cm
BE075	NVA	South West Central Sycan	-2.75 cm	8.88 ppsm	0.19 m	2.83°	-2.71 cm
BE076	NVA	South West Central Sycan	5.64 cm	7.53 ppsm	0.22 m	4.57°	5.48 cm
BE077	NVA	South West Central Sycan	5.57 cm	7.29 ppsm	0.14 m	1.01°	5.82 cm
BE078	NVA	South West Central Sycan	-1.53 cm	7.46 ppsm	0.29 m	1.22°	-1.60 cm
BE079	NVA	South West Central Sycan	-5.81 cm	12.20 ppsm	0.10 m	4.65°	-5.10 cm
BE080	NVA	South West Central Sycan	3.91 cm	8.06 ppsm	0.20 m	2.02°	4.06 cm
BE081	NVA	South West Central Sycan	2.18 cm	15.42 ppsm	0.07 m	2.63°	1.54 cm
BE082	NVA	South West Central Sycan	-4.44 cm	8.31 ppsm	0.16 m	1.43°	-3.77 cm
BE083	NVA	South West Central Sycan	-1.82 cm	11.88 ppsm	0.17 m	2.23°	-0.52 cm
BE084	NVA	South West Central Sycan	-0.81 cm	10.19 ppsm	0.06 m	3.84°	-0.81 cm
BE085	NVA	South West Central Sycan	2.40 cm	7.75 ppsm	0.14 m	15.04°	2.39 cm
BE086	NVA	South West Central Sycan	-3.27 cm	8.63 ppsm	0.34 m	2.86°	-3.79 cm
BE087	NVA	South West Central Sycan	0.00 cm	4.74 ppsm	0.20 m	4.04°	-0.12 cm
BE088	NVA	South West Central Sycan	3.22 cm	9.94 ppsm	0.22 m	4.00°	3.25 cm

Control Point Breakdown (continued)

Point	Type	Project	Ground (LAS Points)				DEM Dz
			Dz	Density	Nearest	Slope	
BE089	NVA	South West Central Sycan	3.00 cm	8.03 ppsm	0.06 m	5.99°	2.11 cm
BE090	NVA	South West Central Sycan	-3.13 cm	14.68 ppsm	0.15 m	3.04°	-3.09 cm
BE091	NVA	South West Central Sycan	1.89 cm	5.55 ppsm	0.08 m	3.64°	1.46 cm
BE092	NVA	South West Central Sycan	-0.80 cm	13.02 ppsm	0.07 m	1.82°	-0.38 cm
BE094	NVA	South West Central Sycan	-8.94 cm	7.18 ppsm	0.20 m	2.43°	-8.98 cm
BE095	NVA	South West Central Sycan	1.24 cm	8.38 ppsm	0.09 m	5.71°	0.45 cm
BE096	NVA	South West Central Sycan	-1.02 cm	8.91 ppsm	0.16 m	2.43°	-1.11 cm
BE097	NVA	South West Central Sycan	-0.25 cm	7.53 ppsm	0.21 m	4.04°	-0.20 cm
BE098	NVA	South West Central Sycan	11.78 cm	8.21 ppsm	0.19 m	1.42°	12.15 cm
BE099	NVA	South West Central Sycan	0.96 cm	7.64 ppsm	0.19 m	7.13°	0.95 cm
BE100	NVA	South West Central Sycan	2.15 cm	7.89 ppsm	0.16 m	2.63°	1.88 cm
BE101	NVA	South West Central Sycan	1.50 cm	8.84 ppsm	0.05 m	7.97°	1.39 cm
BE102	NVA	South West Central Sycan	3.05 cm	7.22 ppsm	0.25 m	0.57°	3.03 cm
BE103	NVA	South West Central Sycan	8.21 cm	13.19 ppsm	0.01 m	1.22°	7.16 cm
BE200	NVA	South West Central Sycan	-2.59 cm	9.12 ppsm	0.03 m	2.29°	-3.53 cm
UA001	NVA	South West Central Sycan	-2.20 cm	16.87 ppsm	0.16 m	4.00°	-2.15 cm
UA002	NVA	South West Central Sycan	1.70 cm	19.66 ppsm	0.09 m	6.25°	1.64 cm
UA003	NVA	South West Central Sycan	-3.30 cm	11.71 ppsm	0.21 m	1.22°	-3.28 cm
UA004	NVA	South West Central Sycan	-5.07 cm	7.36 ppsm	0.13 m	2.00°	-4.28 cm
UA005	NVA	South West Central Sycan	1.76 cm	8.13 ppsm	0.10 m	3.15°	1.55 cm
UA006	NVA	South West Central Sycan	1.12 cm	7.99 ppsm	0.14 m	4.25°	0.95 cm
UA007	NVA	South West Central Sycan	0.66 cm	9.55 ppsm	0.13 m	2.29°	2.89 cm
UA008	NVA	South West Central Sycan	-0.38 cm	8.28 ppsm	0.18 m	3.44°	-0.52 cm
UA009	NVA	South West Central Sycan	-2.91 cm	6.51 ppsm	0.15 m	4.25°	-2.58 cm
UA010	NVA	South West Central Sycan	-1.35 cm	8.67 ppsm	0.03 m	1.82°	-1.56 cm
UA011	NVA	South West Central Sycan	5.80 cm	5.52 ppsm	0.26 m	1.72°	5.93 cm
UA012	NVA	South West Central Sycan	-3.46 cm	11.78 ppsm	0.21 m	4.29°	-3.12 cm
UA013	NVA	South West Central Sycan	1.03 cm	13.30 ppsm	0.05 m	3.24°	0.98 cm

Control Point Breakdown (continued)

Point	Type	Project	Ground (LAS Points)				DEM Dz
			Dz	Density	Nearest	Slope	
UA014	NVA	South West Central Sycan	8.00 cm	10.57 ppsm	0.18 m	0.81°	7.97 cm
UA015	NVA	South West Central Sycan	1.51 cm	13.90 ppsm	0.13 m	9.83°	1.66 cm
UA016	NVA	South West Central Sycan	-2.75 cm	8.10 ppsm	0.12 m	2.02°	-2.73 cm
UA017	NVA	South West Central Sycan	0.22 cm	5.91 ppsm	0.19 m	6.56°	-0.29 cm
UA018	NVA	South West Central Sycan	0.73 cm	6.54 ppsm	0.05 m	2.29°	0.47 cm
UA019	NVA	South West Central Sycan	3.28 cm	6.86 ppsm	0.20 m	8.84°	3.07 cm
UA020	NVA	South West Central Sycan	-1.58 cm	15.35 ppsm	0.07 m	4.65°	-2.51 cm
FR001	VVA	South West Central Sycan	-1.89 cm	3.18 ppsm	0.33 m	7.05°	-0.94 cm
FR002	VVA	South West Central Sycan	8.69 cm	3.61 ppsm	0.24 m	7.45°	8.66 cm
FR003	VVA	South West Central Sycan	14.01 cm	3.54 ppsm	0.27 m	2.86°	14.12 cm
FR004	VVA	South West Central Sycan	0.24 cm	4.74 ppsm	0.12 m	9.65°	-0.19 cm
FR005	VVA	South West Central Sycan	1.92 cm	7.25 ppsm	0.28 m	3.15°	2.51 cm
FR006	VVA	South West Central Sycan	1.42 cm	3.86 ppsm	0.34 m	6.25°	1.28 cm
FR007	VVA	South West Central Sycan	4.38 cm	10.47 ppsm	0.29 m	4.86°	4.19 cm
FR009	VVA	South West Central Sycan	6.82 cm	4.17 ppsm	0.04 m	3.44°	7.70 cm
FR010	VVA	South West Central Sycan	5.89 cm	8.42 ppsm	0.09 m	4.04°	5.17 cm
FR011	VVA	South West Central Sycan	9.30 cm	4.21 ppsm	0.09 m	6.56°	9.04 cm
FR012	VVA	South West Central Sycan	5.74 cm	4.24 ppsm	0.23 m	3.84°	5.98 cm
FR013	VVA	South West Central Sycan	13.18 cm	5.91 ppsm	0.21 m	6.56°	12.38 cm
FR014	VVA	South West Central Sycan	9.77 cm	0.78 ppsm	0.12 m	2.86°	10.06 cm
FR015	VVA	South West Central Sycan	3.21 cm	5.09 ppsm	0.11 m	3.84°	2.72 cm
FR016	VVA	South West Central Sycan	4.58 cm	3.40 ppsm	0.35 m	2.29°	4.98 cm
FR017	VVA	South West Central Sycan	5.65 cm	3.96 ppsm	0.11 m	4.45°	4.52 cm
FR018	VVA	South West Central Sycan	5.73 cm	2.94 ppsm	0.38 m	5.25°	5.66 cm
FR019	VVA	South West Central Sycan	6.09 cm	4.60 ppsm	0.23 m	3.43°	6.05 cm
FR020	VVA	South West Central Sycan	3.06 cm	5.27 ppsm	0.05 m	2.58°	3.01 cm
FR021	VVA	South West Central Sycan	7.70 cm	3.32 ppsm	0.37 m	4.29°	8.45 cm
FR022	VVA	South West Central Sycan	8.13 cm	1.17 ppsm	0.59 m	12.95°	8.13 cm

Control Point Breakdown (continued)

Point	Type	Project	Ground (LAS Points)				DEM Dz
			Dz	Density	Nearest	Slope	
FR023	VVA	South West Central Sycan	9.29 cm	3.15 ppsm	0.14 m	5.05°	9.73 cm
FR024	VVA	South West Central Sycan	8.18 cm	4.10 ppsm	0.44 m	2.86°	6.90 cm
FR025	VVA	South West Central Sycan	-1.08 cm	11.67 ppsm	0.01 m	14.66°	-0.51 cm
FR026	VVA	South West Central Sycan	-3.85 cm	7.75 ppsm	0.10 m	6.28°	-3.09 cm
FR027	VVA	South West Central Sycan	0.29 cm	7.29 ppsm	0.23 m	3.04°	0.57 cm
FR028	VVA	South West Central Sycan	5.68 cm	2.97 ppsm	0.17 m	4.57°	6.33 cm
FR029	VVA	South West Central Sycan	-3.15 cm	7.53 ppsm	0.13 m	14.57°	-3.03 cm
FR030	VVA	South West Central Sycan	4.48 cm	3.82 ppsm	0.37 m	7.69°	4.84 cm
FR031	VVA	South West Central Sycan	3.37 cm	4.24 ppsm	0.26 m	1.43°	3.41 cm
FR032	VVA	South West Central Sycan	18.58 cm	2.44 ppsm	0.17 m	6.84°	18.68 cm
FR033	VVA	South West Central Sycan	14.94 cm	4.10 ppsm	0.30 m	3.84°	15.02 cm
FR034	VVA	South West Central Sycan	6.09 cm	5.45 ppsm	0.10 m	4.29°	5.91 cm
FR035	VVA	South West Central Sycan	5.23 cm	3.32 ppsm	0.20 m	15.11°	4.60 cm
FR036	VVA	South West Central Sycan	14.95 cm	3.43 ppsm	0.26 m	7.97°	15.27 cm
FR037	VVA	South West Central Sycan	3.60 cm	5.13 ppsm	0.16 m	2.63°	4.22 cm
FR038	VVA	South West Central Sycan	6.38 cm	5.59 ppsm	0.30 m	2.02°	5.89 cm
FR039	VVA	South West Central Sycan	5.91 cm	3.89 ppsm	0.15 m	2.23°	6.43 cm
FR040	VVA	South West Central Sycan	4.56 cm	4.24 ppsm	0.38 m	15.23°	4.09 cm
FR041	VVA	South West Central Sycan	4.38 cm	7.04 ppsm	0.28 m	6.84°	4.97 cm
FR042	VVA	South West Central Sycan	4.76 cm	2.48 ppsm	0.12 m	2.83°	5.50 cm
FR044	VVA	South West Central Sycan	3.55 cm	2.58 ppsm	0.96 m	8.25°	3.55 cm
FR045	VVA	South West Central Sycan	6.56 cm	3.89 ppsm	0.25 m	2.00°	5.17 cm
FR046	VVA	South West Central Sycan	-5.13 cm	5.34 ppsm	0.12 m	6.25°	-3.53 cm
FR047	VVA	South West Central Sycan	-0.91 cm	2.90 ppsm	0.79 m	9.37°	-1.83 cm
FR048	VVA	South West Central Sycan	7.80 cm	4.95 ppsm	0.08 m	2.02°	7.83 cm
FR049	VVA	South West Central Sycan	3.24 cm	4.17 ppsm	0.16 m	5.05°	0.55 cm
FR050	VVA	South West Central Sycan	6.10 cm	1.10 ppsm	1.56 m	-	6.18 cm
FR051	VVA	South West Central Sycan	-4.10 cm	3.71 ppsm	0.15 m	3.43°	-3.71 cm

Control Point Breakdown (continued)

Point	Type	Project	Ground (LAS Points)				DEM Dz
			Dz	Density	Nearest	Slope	
FR052	VVA	South West Central Sycan	6.28 cm	5.55 ppsm	0.12 m	3.84°	5.59 cm
FR053	VVA	South West Central Sycan	3.64 cm	2.76 ppsm	0.16 m	6.28°	3.73 cm
FR100	VVA	South West Central Sycan	4.28 cm	2.58 ppsm	0.35 m	2.29°	4.17 cm
SH001	VVA	South West Central Sycan	-6.99 cm	6.86 ppsm	0.57 m	2.02°	-7.00 cm
SH002	VVA	South West Central Sycan	6.36 cm	5.34 ppsm	0.40 m	2.58°	5.85 cm
SH003	VVA	South West Central Sycan	11.78 cm	7.43 ppsm	0.34 m	2.29°	11.73 cm
SH004	VVA	South West Central Sycan	19.55 cm	4.63 ppsm	0.16 m	2.43°	18.59 cm
SH005	VVA	South West Central Sycan	19.87 cm	7.57 ppsm	0.21 m	4.65°	19.57 cm
SH006	VVA	South West Central Sycan	2.98 cm	10.57 ppsm	0.40 m	6.84°	2.89 cm
SH007	VVA	South West Central Sycan	8.69 cm	6.19 ppsm	0.44 m	1.15°	8.67 cm
SH008	VVA	South West Central Sycan	12.31 cm	4.74 ppsm	0.38 m	3.43°	12.36 cm
SH009	VVA	South West Central Sycan	2.64 cm	6.61 ppsm	0.23 m	4.25°	2.71 cm
SH010	VVA	South West Central Sycan	3.20 cm	4.81 ppsm	0.59 m	23.51°	3.32 cm
SH011	VVA	South West Central Sycan	30.81 cm	2.37 ppsm	0.08 m	10.76°	28.50 cm
SH012	VVA	South West Central Sycan	12.03 cm	10.65 ppsm	0.18 m	16.17°	11.81 cm
SH013	VVA	South West Central Sycan	7.80 cm	5.23 ppsm	0.57 m	4.85°	7.85 cm
SH014	VVA	South West Central Sycan	3.21 cm	4.70 ppsm	0.32 m	3.64°	3.17 cm
SH015	VVA	South West Central Sycan	0.20 cm	19.24 ppsm	0.25 m	2.23°	-0.28 cm
SH016	VVA	South West Central Sycan	1.60 cm	4.42 ppsm	1.06 m	4.29°	1.03 cm
SH017	VVA	South West Central Sycan	12.53 cm	5.84 ppsm	0.58 m	6.84°	12.42 cm
SH018	VVA	South West Central Sycan	12.12 cm	6.08 ppsm	0.15 m	3.44°	12.71 cm
SH019	VVA	South West Central Sycan	5.62 cm	5.13 ppsm	0.59 m	15.42°	5.63 cm
SH020	VVA	South West Central Sycan	11.94 cm	3.50 ppsm	0.39 m	12.56°	11.95 cm
SH021	VVA	South West Central Sycan	4.20 cm	5.62 ppsm	0.67 m	1.72°	3.46 cm
SH022	VVA	South West Central Sycan	15.61 cm	6.26 ppsm	0.15 m	9.93°	13.93 cm
SH023	VVA	South West Central Sycan	16.16 cm	5.31 ppsm	0.53 m	2.29°	16.04 cm
SH030	VVA	South West Central Sycan	12.00 cm	6.83 ppsm	0.35 m	3.64°	8.81 cm
SH031	VVA	South West Central Sycan	3.99 cm	7.22 ppsm	0.99 m	3.15°	4.20 cm

Control Point Breakdown (continued)

Point	Type	Project	Ground (LAS Points)				DEM Dz
			Dz	Density	Nearest	Slope	
SH032	VVA	South West Central Sycan	10.61 cm	13.09 ppsm	0.17 m	3.64°	9.43 cm
TG001	VVA	South West Central Sycan	7.51 cm	6.86 ppsm	0.22 m	8.84°	7.35 cm
TG002	VVA	South West Central Sycan	5.98 cm	10.86 ppsm	0.21 m	4.45°	5.34 cm
TG003	VVA	South West Central Sycan	2.02 cm	8.56 ppsm	0.12 m	14.31°	-0.67 cm
TG004	VVA	South West Central Sycan	-5.68 cm	5.45 ppsm	0.29 m	6.05°	-6.23 cm
TG005	VVA	South West Central Sycan	-5.22 cm	10.79 ppsm	0.15 m	3.72°	-5.22 cm
TG006	VVA	South West Central Sycan	4.62 cm	4.92 ppsm	0.50 m	9.37°	4.60 cm
TG007	VVA	South West Central Sycan	9.15 cm	9.48 ppsm	0.18 m	6.84°	7.31 cm
TG008	VVA	South West Central Sycan	-3.41 cm	9.97 ppsm	0.29 m	9.43°	-2.53 cm
TG009	VVA	South West Central Sycan	-0.91 cm	7.22 ppsm	0.42 m	6.65°	-0.89 cm
TG010	VVA	South West Central Sycan	-3.69 cm	7.07 ppsm	0.48 m	2.00°	-3.71 cm
TG011	VVA	South West Central Sycan	3.96 cm	7.11 ppsm	0.40 m	2.00°	3.99 cm
TG012	VVA	South West Central Sycan	8.83 cm	12.20 ppsm	0.13 m	4.45°	9.06 cm
TG013	VVA	South West Central Sycan	42.08 cm	4.99 ppsm	0.27 m	4.29°	41.33 cm
TG014	VVA	South West Central Sycan	8.95 cm	8.95 ppsm	0.02 m	2.43°	8.71 cm
TG015	VVA	South West Central Sycan	17.39 cm	4.88 ppsm	0.17 m	4.29°	17.18 cm
TG016	VVA	South West Central Sycan	9.20 cm	14.57 ppsm	0.05 m	7.25°	8.78 cm
TG017	VVA	South West Central Sycan	-2.55 cm	7.22 ppsm	0.26 m	5.43°	-1.94 cm
TG018	VVA	South West Central Sycan	10.70 cm	8.70 ppsm	0.21 m	3.15°	10.47 cm
TG019	VVA	South West Central Sycan	4.57 cm	8.45 ppsm	0.16 m	3.64°	3.74 cm
TG020	VVA	South West Central Sycan	2.31 cm	6.58 ppsm	0.25 m	6.85°	2.24 cm
TG021	VVA	South West Central Sycan	14.40 cm	12.56 ppsm	0.08 m	0.86°	14.57 cm
TG022	VVA	South West Central Sycan	1.80 cm	15.67 ppsm	0.22 m	10.02°	1.77 cm
TG023	VVA	South West Central Sycan	-0.70 cm	9.37 ppsm	0.14 m	5.43°	-0.13 cm
TG024	VVA	South West Central Sycan	10.79 cm	12.13 ppsm	0.16 m	2.23°	11.18 cm
CA001	CAL	South West Central Sycan	5.00 cm	15.49 ppsm	0.19 m	3.15°	4.87 cm
CA002	CAL	South West Central Sycan	2.40 cm	7.96 ppsm	0.14 m	3.44°	2.56 cm
CA003	CAL	South West Central Sycan	6.36 cm	5.02 ppsm	0.31 m	5.14°	6.29 cm

Control Point Breakdown (continued)

Point	Type	Project	Ground (LAS Points)				DEM Dz
			Dz	Density	Nearest	Slope	
CA004	CAL	South West Central Sycan	-7.62 cm	12.80 ppsm	0.09 m	0.86°	-7.48 cm
CA005	CAL	South West Central Sycan	4.01 cm	8.45 ppsm	0.19 m	4.57°	4.17 cm
CA007	CAL	South West Central Sycan	4.76 cm	22.18 ppsm	0.03 m	5.45°	3.47 cm
CA008	CAL	South West Central Sycan	-0.36 cm	8.13 ppsm	0.19 m	2.00°	0.13 cm
CA009	CAL	South West Central Sycan	2.11 cm	7.07 ppsm	0.32 m	3.72°	1.91 cm
CA011	CAL	South West Central Sycan	1.07 cm	8.06 ppsm	0.25 m	2.43°	1.50 cm
CA012	CAL	South West Central Sycan	2.40 cm	7.14 ppsm	0.11 m	1.72°	2.80 cm
CA013	CAL	South West Central Sycan	2.94 cm	8.52 ppsm	0.19 m	5.65°	3.08 cm
CA014	CAL	South West Central Sycan	-1.08 cm	7.96 ppsm	0.18 m	3.24°	-0.50 cm
CA015	CAL	South West Central Sycan	-2.05 cm	13.16 ppsm	0.15 m	2.58°	-2.41 cm
CA016	CAL	South West Central Sycan	2.31 cm	9.27 ppsm	0.20 m	7.69°	1.29 cm
CA017	CAL	South West Central Sycan	-1.60 cm	9.16 ppsm	0.03 m	2.29°	-1.35 cm
CA018	CAL	South West Central Sycan	-0.71 cm	7.71 ppsm	0.11 m	2.63°	-0.81 cm
CA019	CAL	South West Central Sycan	-1.20 cm	13.51 ppsm	0.08 m	4.00°	-1.39 cm
CA020	CAL	South West Central Sycan	-2.75 cm	6.15 ppsm	0.30 m	3.43°	-2.17 cm
CA021	CAL	South West Central Sycan	-1.48 cm	5.55 ppsm	0.34 m	3.44°	-1.03 cm
CA022	CAL	South West Central Sycan	5.53 cm	7.53 ppsm	0.14 m	8.53°	5.18 cm
CA023	CAL	South West Central Sycan	1.21 cm	6.54 ppsm	0.22 m	4.65°	1.30 cm
CA024	CAL	South West Central Sycan	2.27 cm	8.91 ppsm	0.01 m	7.25°	4.49 cm
CA025	CAL	South West Central Sycan	1.92 cm	12.94 ppsm	0.08 m	2.63°	2.08 cm
CA026	CAL	South West Central Sycan	1.67 cm	6.05 ppsm	0.25 m	2.83°	2.14 cm
CA027	CAL	South West Central Sycan	3.75 cm	9.76 ppsm	0.26 m	9.09°	3.91 cm
CA028	CAL	South West Central Sycan	6.24 cm	13.65 ppsm	0.17 m	3.04°	6.53 cm
CA029	CAL	South West Central Sycan	0.60 cm	11.49 ppsm	0.15 m	5.14°	0.82 cm
CA030	CAL	South West Central Sycan	0.89 cm	16.41 ppsm	0.09 m	4.25°	0.30 cm
CA031	CAL	South West Central Sycan	3.35 cm	6.44 ppsm	0.14 m	0.86°	3.57 cm
CA032	CAL	South West Central Sycan	-2.90 cm	9.41 ppsm	0.09 m	6.56°	-2.69 cm
CA034	CAL	South West Central Sycan	-5.74 cm	12.87 ppsm	0.04 m	5.05°	-3.27 cm

Control Point Breakdown (continued)

Point	Type	Project	Ground (LAS Points)				DEM Dz
			Dz	Density	Nearest	Slope	
CA035	CAL	South West Central Sycan	-0.87 cm	11.42 ppsm	0.17 m	5.25°	-0.85 cm
CA036	CAL	South West Central Sycan	6.60 cm	14.54 ppsm	0.23 m	2.83°	6.59 cm
CA037	CAL	South West Central Sycan	-4.94 cm	7.60 ppsm	0.08 m	2.43°	-4.12 cm
CA038	CAL	South West Central Sycan	0.10 cm	8.24 ppsm	0.21 m	3.72°	0.05 cm
CA039	CAL	South West Central Sycan	-0.45 cm	8.45 ppsm	0.38 m	1.82°	-0.52 cm
CA040	CAL	South West Central Sycan	4.46 cm	12.20 ppsm	0.12 m	2.83°	3.66 cm
CA041	CAL	South West Central Sycan	-3.20 cm	6.30 ppsm	0.13 m	9.04°	-3.75 cm
CA042	CAL	South West Central Sycan	1.22 cm	29.82 ppsm	0.07 m	5.14°	0.56 cm
CA043	CAL	South West Central Sycan	-4.78 cm	7.85 ppsm	0.25 m	5.25°	-4.58 cm
CA044	CAL	South West Central Sycan	9.70 cm	9.23 ppsm	0.06 m	0.86°	9.83 cm
CA045	CAL	South West Central Sycan	-1.72 cm	7.85 ppsm	0.11 m	4.00°	-1.93 cm
CA046	CAL	South West Central Sycan	3.22 cm	7.04 ppsm	0.05 m	4.04°	3.13 cm
CA047	CAL	South West Central Sycan	3.62 cm	17.65 ppsm	0.09 m	4.04°	3.78 cm
CA048	CAL	South West Central Sycan	1.90 cm	9.55 ppsm	0.14 m	3.04°	2.46 cm
CA049	CAL	South West Central Sycan	2.57 cm	7.57 ppsm	0.11 m	3.72°	2.43 cm
CA050	CAL	South West Central Sycan	3.30 cm	7.57 ppsm	0.16 m	10.81°	3.54 cm
CA052	CAL	South West Central Sycan	-0.40 cm	11.49 ppsm	0.14 m	1.43°	0.23 cm
CA053	CAL	South West Central Sycan	-3.50 cm	11.95 ppsm	0.07 m	1.62°	-3.42 cm
CA054	CAL	South West Central Sycan	-1.28 cm	6.08 ppsm	0.10 m	3.64°	-1.03 cm
CA055	CAL	South West Central Sycan	-1.70 cm	8.21 ppsm	0.13 m	1.43°	-1.89 cm
CA057	CAL	South West Central Sycan	-7.54 cm	7.39 ppsm	0.23 m	2.83°	-7.49 cm
CA058	CAL	South West Central Sycan	5.59 cm	8.70 ppsm	0.25 m	2.83°	5.57 cm
CA059	CAL	South West Central Sycan	3.18 cm	7.18 ppsm	0.13 m	2.29°	3.37 cm
CA063	CAL	South West Central Sycan	-5.37 cm	11.49 ppsm	0.11 m	2.58°	-4.70 cm
CA064	CAL	South West Central Sycan	4.98 cm	8.45 ppsm	0.10 m	3.72°	5.19 cm
CA065	CAL	South West Central Sycan	4.13 cm	9.58 ppsm	0.06 m	3.15°	4.07 cm
CA066	CAL	South West Central Sycan	7.69 cm	16.59 ppsm	0.11 m	2.86°	8.20 cm
CA067	CAL	South West Central Sycan	3.37 cm	15.17 ppsm	0.10 m	4.86°	3.31 cm

Control Point Breakdown (continued)

Point	Type	Project	Ground (LAS Points)				DEM Dz
			Dz	Density	Nearest	Slope	
CA068	CAL	South West Central Sycan	-0.92 cm	11.00 ppsm	0.18 m	3.04°	-1.33 cm
CA069	CAL	South West Central Sycan	4.60 cm	8.21 ppsm	0.20 m	4.45°	4.92 cm
CA070	CAL	South West Central Sycan	-1.12 cm	11.53 ppsm	0.09 m	5.25°	-0.85 cm
CA071	CAL	South West Central Sycan	-5.01 cm	14.11 ppsm	0.19 m	6.45°	-5.64 cm
CA072	CAL	South West Central Sycan	1.13 cm	6.86 ppsm	0.20 m	7.05°	1.61 cm
CA073	CAL	South West Central Sycan	0.26 cm	7.85 ppsm	0.07 m	5.14°	1.28 cm
CA076	CAL	South West Central Sycan	-1.33 cm	6.51 ppsm	0.19 m	6.25°	-1.24 cm
CA078	CAL	South West Central Sycan	5.40 cm	9.02 ppsm	0.17 m	3.84°	5.40 cm
CA079	CAL	South West Central Sycan	-6.64 cm	7.04 ppsm	0.24 m	0.61°	-6.77 cm
CA080	CAL	South West Central Sycan	6.05 cm	11.85 ppsm	0.11 m	4.57°	5.80 cm
CA081	CAL	South West Central Sycan	1.90 cm	13.02 ppsm	0.26 m	1.62°	1.87 cm
CA083	CAL	South West Central Sycan	6.97 cm	11.92 ppsm	0.18 m	6.65°	7.15 cm
CA084	CAL	South West Central Sycan	0.80 cm	9.83 ppsm	0.16 m	1.43°	0.78 cm
CA085	CAL	South West Central Sycan	-1.47 cm	13.26 ppsm	0.14 m	2.58°	-2.08 cm
CA086	CAL	South West Central Sycan	1.79 cm	7.53 ppsm	0.17 m	2.29°	1.67 cm
CA087	CAL	South West Central Sycan	-4.79 cm	8.45 ppsm	0.18 m	2.63°	-4.65 cm
CA088	CAL	South West Central Sycan	3.10 cm	8.42 ppsm	0.09 m	1.82°	2.72 cm
CA089	CAL	South West Central Sycan	1.70 cm	7.82 ppsm	0.11 m	4.65°	1.55 cm
CA090	CAL	South West Central Sycan	0.41 cm	19.06 ppsm	0.12 m	6.05°	-0.58 cm
CA091	CAL	South West Central Sycan	-2.65 cm	7.85 ppsm	0.21 m	4.29°	-2.85 cm
CA092	CAL	South West Central Sycan	-0.92 cm	12.63 ppsm	0.03 m	1.82°	-0.83 cm
CA093	CAL	South West Central Sycan	-2.81 cm	7.29 ppsm	0.19 m	2.29°	-1.90 cm
CA094	CAL	South West Central Sycan	-5.18 cm	10.68 ppsm	0.08 m	4.65°	-4.61 cm
CA095	CAL	South West Central Sycan	-5.65 cm	8.59 ppsm	0.22 m	2.83°	-5.36 cm
CA096	CAL	South West Central Sycan	1.29 cm	7.07 ppsm	0.04 m	1.82°	0.92 cm
CA097	CAL	South West Central Sycan	1.07 cm	7.14 ppsm	0.12 m	1.43°	0.49 cm
CA098	CAL	South West Central Sycan	1.15 cm	8.84 ppsm	0.13 m	1.82°	1.05 cm
CA099	CAL	South West Central Sycan	1.52 cm	10.72 ppsm	0.17 m	2.00°	1.74 cm

Control Point Breakdown (continued)

Point	Type	Project	Ground (LAS Points)				DEM Dz
			Dz	Density	Nearest	Slope	
CA100	CAL	South West Central Sycan	1.33 cm	7.67 ppsm	0.14 m	2.86°	1.63 cm
CA101	CAL	South West Central Sycan	-8.90 cm	7.64 ppsm	0.24 m	2.83°	-8.92 cm
CA102	CAL	South West Central Sycan	3.83 cm	8.63 ppsm	0.16 m	3.84°	3.87 cm
CA103	CAL	South West Central Sycan	-1.84 cm	10.12 ppsm	0.07 m	4.45°	-1.26 cm
CA104	CAL	South West Central Sycan	-3.61 cm	7.22 ppsm	0.33 m	6.25°	-3.45 cm
CA105	CAL	South West Central Sycan	9.10 cm	11.78 ppsm	0.08 m	1.43°	8.73 cm
CA106	CAL	South West Central Sycan	0.65 cm	6.97 ppsm	0.10 m	0.61°	0.93 cm
CA107	CAL	South West Central Sycan	0.41 cm	22.39 ppsm	0.06 m	7.05°	1.30 cm
CA108	CAL	South West Central Sycan	0.70 cm	8.52 ppsm	0.14 m	6.25°	0.70 cm
CA109	CAL	South West Central Sycan	-0.36 cm	7.57 ppsm	0.03 m	1.72°	-0.28 cm
CA110	CAL	South West Central Sycan	-1.50 cm	7.36 ppsm	0.10 m	5.05°	-1.27 cm
CA111	CAL	South West Central Sycan	4.24 cm	9.94 ppsm	0.10 m	0.61°	4.61 cm
CA112	CAL	South West Central Sycan	-0.51 cm	11.28 ppsm	0.17 m	1.82°	-0.34 cm
CA114	CAL	South West Central Sycan	-0.65 cm	8.42 ppsm	0.18 m	2.58°	-0.73 cm
CA115	CAL	South West Central Sycan	-5.54 cm	14.01 ppsm	0.09 m	2.63°	-5.56 cm
CA116	CAL	South West Central Sycan	0.61 cm	13.44 ppsm	0.13 m	6.05°	0.66 cm
CA117	CAL	South West Central Sycan	0.06 cm	14.61 ppsm	0.11 m	4.65°	-0.24 cm
CA118	CAL	South West Central Sycan	4.41 cm	11.14 ppsm	0.07 m	1.43°	4.46 cm
CA119	CAL	South West Central Sycan	-4.96 cm	3.29 ppsm	0.29 m	14.09°	-5.14 cm
CA200	CAL	South West Central Sycan	-0.95 cm	11.49 ppsm	0.13 m	2.86°	-0.92 cm