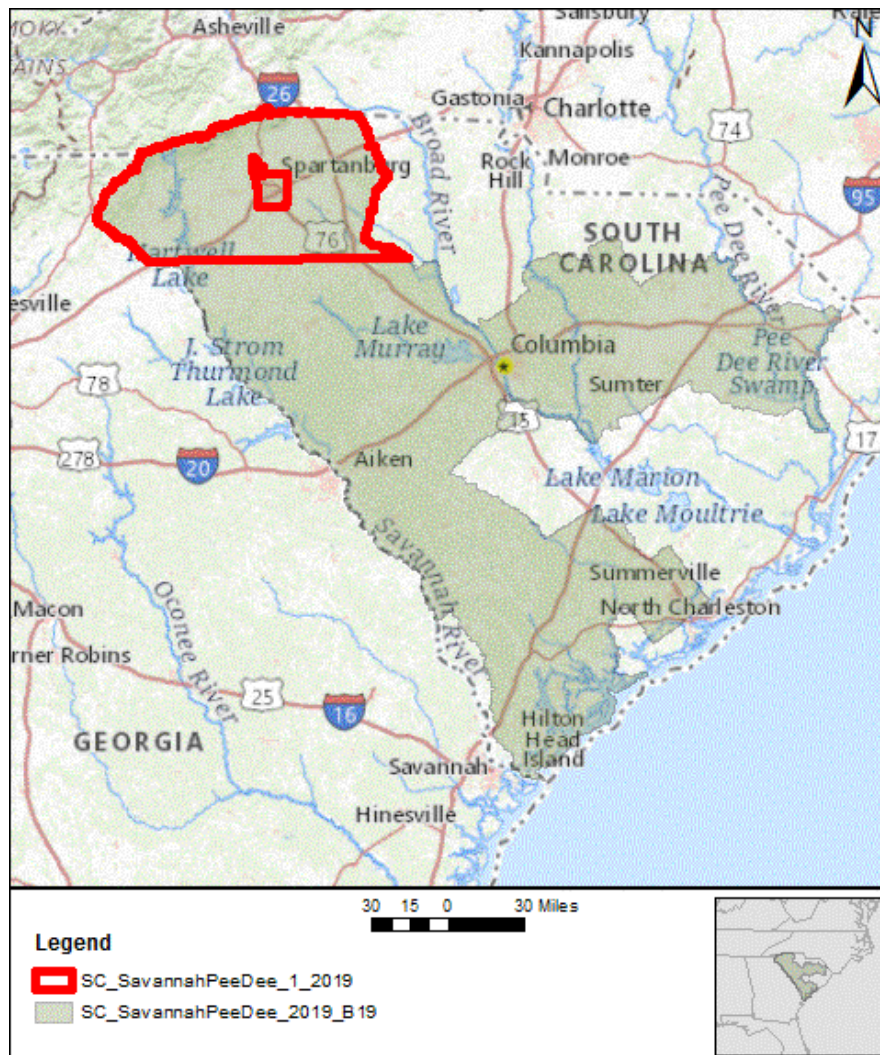


LIDAR Quality Report

from the National Geospatial Technical Operations Center
in Support of the 3D Elevation Program

SC_SavannahPeeDee_1_2019

2021-03-19



Based on this review, the delivered data **DOES NOT MEET** 3D Elevation Program requirements.

Project Information

WP Name: SC_SavannahPeeDee_2019_B19	Work Package ID: 183611
WU Name: SC_SavannahPeeDee_1_2019	Work Unit ID: 183608
Horizontal SRS: NAD83(2011) / South Carolina (ft)	Vertical SRS: NAVD88 height (ftUS)
Mechanism: GPSC	Lidar Base Spec: 1.3
USGS Project POC: Michael Bradford	POC Email: mbradford@usgs.gov
Vertical Accuracy: Review is expected to meet but awaiting final vertical accuracy assessment.	

Product	Accepted	Delivered
Hydroflattened Polyline Breaklines	Yes	Yes
Bridge Point Breaklines	Yes	Yes
Hydroflattened Polygon Breaklines	Yes	Yes
Contractor Collection Report	Yes	Yes
Contractor Processing Report	Yes	Yes
Contractor Accuracy Report	Yes	Yes
Contractor Survey Report	Yes	Yes
Contractor Project Report	Yes	Yes
Breakline/Hydro XML	Yes	Yes
Intensity Imagery XML	Yes	Yes
DEM XML	Yes	Yes
Classified LPC XML	Yes	Yes
Tile Index	Yes	Yes
Control Points	Yes	Yes
NVA Checkpoints	Yes	Yes
VVA Checkpoints	Yes	Yes
Defined Project Area	Yes	Yes
Swath Polygon	Yes	Yes

Product	Accepted	Delivered
Intensity Imagery	Yes	Yes
Swath Separation Images	Yes	Yes
DEM	Yes	Yes
Pointcloud	No	Yes

Breaklines

Based on this review, the USGS-NGTOC **ACCEPTS** the Breaklines.

Reporting Metadata

Based on this review, the USGS-NGTOC **ACCEPTS** the Reporting Metadata.

Reporting Metadata additional comments:

The following reports are embedded in the contractor project report: Collection, Processing, Accuracy.

FGDC XML Metadata

Based on this review, the USGS-NGTOC **ACCEPTS** the FGDC XML Metadata.

Spatial Metadata

Based on this review, the USGS-NGTOC **ACCEPTS** the Spatial Metadata.

Raster Metadata

Based on this review, the USGS-NGTOC **ACCEPTS** the Raster Metadata.

Other Deliverables

Based on this review, the USGS-NGTOC **ACCEPTS** the Other Deliverables.

Digital Elevation Model (DEM)

Based on this review, the USGS-NGTOC **ACCEPTS** the Digital Elevation Model (DEM).

Pointcloud

Based on this review, the USGS-NGTOC **DOES NOT ACCEPT** the Pointcloud.

Deliverable	Error Type	Subtype	Quantity	Examples
-------------	------------	---------	----------	----------

Pointcloud	Point Mis-classification	None	3	Figure 1 Figure 2 Figure 3
Error Comment(s): - 3 bridges are still classified as ground.				

Pointcloud

Error Type: Point Mis-classification, Error Subtype: None

Figure 1

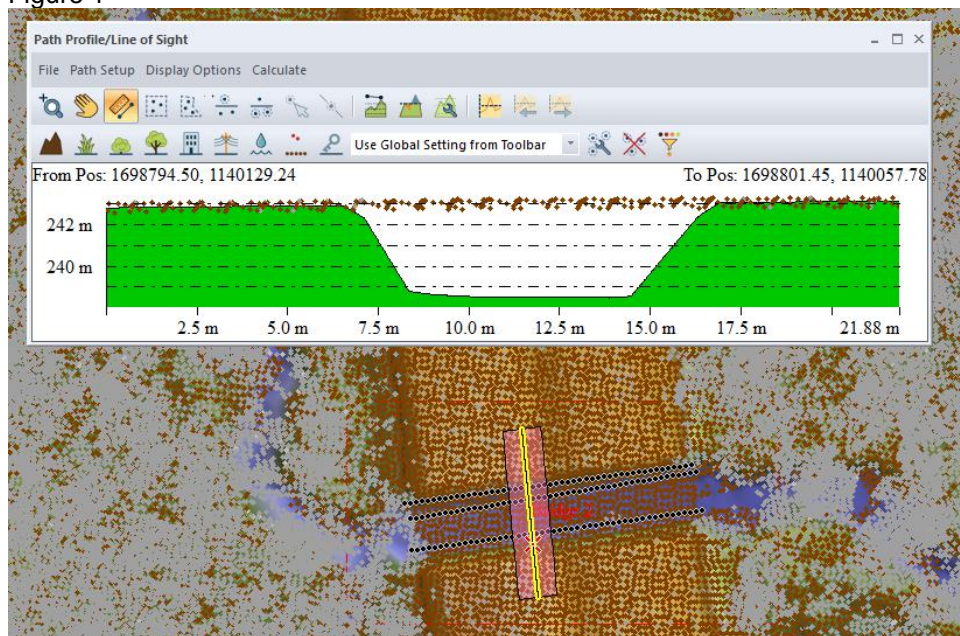


Figure 2

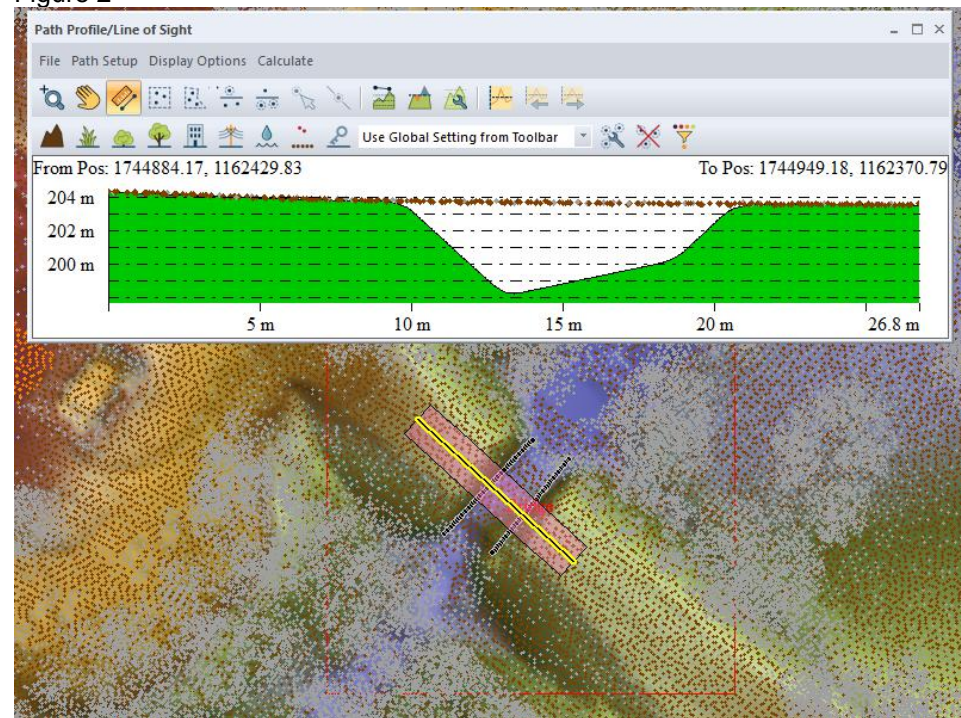


Figure 3

