

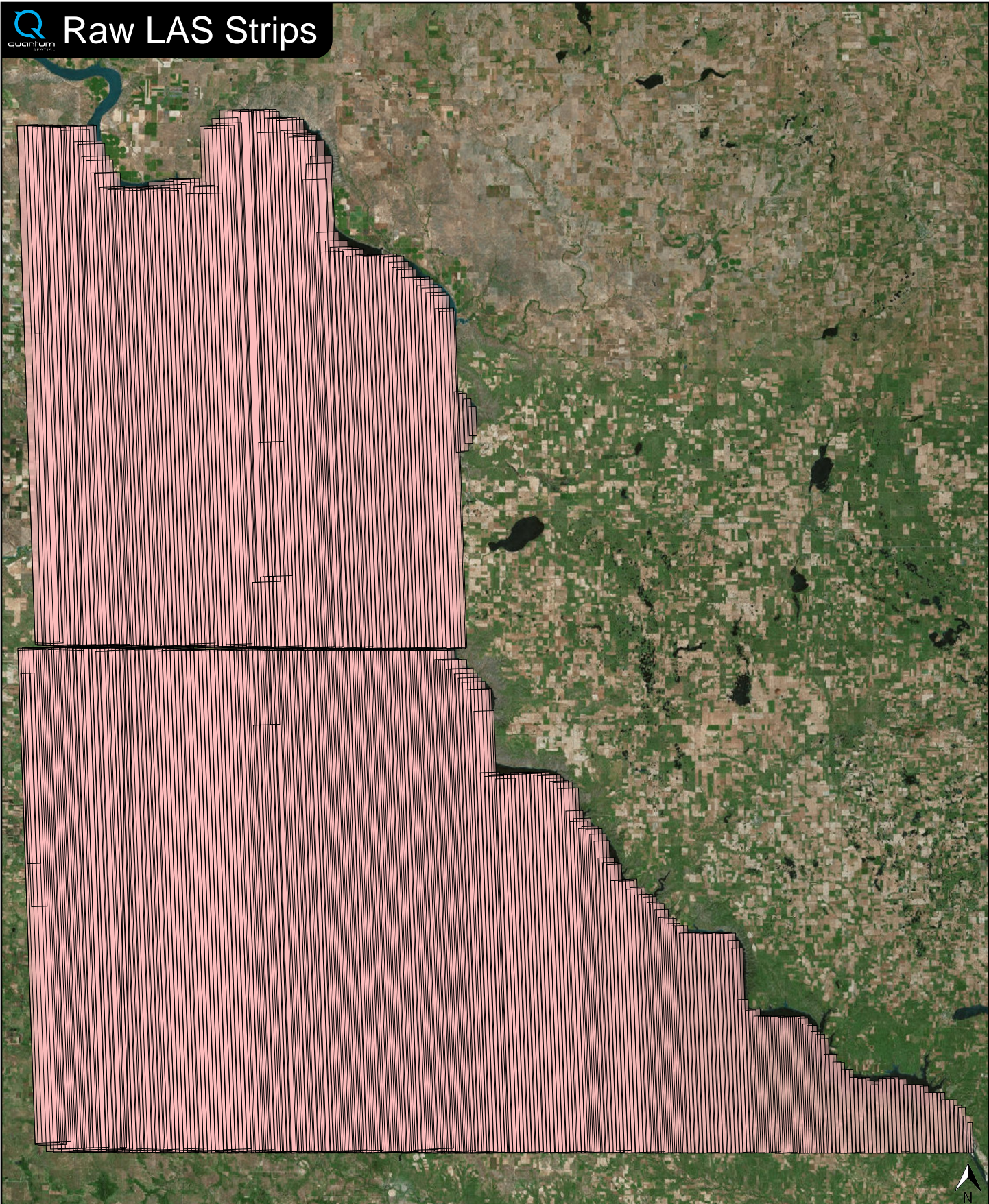
Raw LAS Flight Line Strips

Deliverable 1 Summary

✓ General		
Folder:	H:\point_cloud\swathuncls	
Total # of Files:	355 (All Valid)	
Total File Size:	2.1 TB (2,273,102,303,395 bytes)	
✓ Raw LAS Strips		
Elevation Range:	307m to 1189m	
✓ LAS Version And Point Record Formats		
v1.4, Point Record Format 6		355 of 355 Strips
✓ Spatial Reference System		
Horizontal Projection	NAD83(2011) / UTM zone 14N	355 of 355 Strips
Horizontal Datum	NAD83 (National Spatial Reference System 2011)	355 of 355 Strips
Horizontal Units	meter	355 of 355 Strips
Vertical Datum	NAVD88 height	355 of 355 Strips
Vertical Units	meter	355 of 355 Strips
Storage Method	WKT	355 of 355 Strips
✓ GPS Time Type		
Adjusted		355 of 355 Strips
✓ File Source IDs		
Equals Zero:	None	
All Unique:	Yes	
FLs:	153 - 170, 202 - 220, 223, 225 - 247, 249, 251 - 300, 302, 304, 308 - 380, 501 - 555, 605 - 622, 624 - 717, 2002	
✓ VLR/EVLR Reserved Equals 0		
Yes		925 of 925 Records
✓ Unnecessary Bytes At End Of File		
No		355 of 355 Strips
✓ Legacy Point Count Check		
Zero		355 of 355 Strips
✓ System Identifier		
Quantum Spatial		355 of 355 Strips
✓ Generating Software		
LiDAR Suite		355 of 355 Strips



Raw LAS Strips



FL Strips (355)

