

Classified Point Cloud

Deliverable 1 Summary

✓ General		
Folder:	F:\USGS_South_Dakota_LiDAR_Revisions\Delivery_2\point_cloud\tilecls	
Total # of Files:	180	(All Valid)
Total File Size:	44.2 GB	(47,422,214,514 bytes)

✓ Tile Sizes	
Median Tile Size:	1,000m x 1,000m
Minimum Tile Size:	993m x 1,000m
Maximum Tile Size:	1,000m x 1,000m
X Range:	338000.00m to 418999.99m
Y Range:	4761000.01m to 4893000.00m
Elevation Range:	455.25m to 1386.86m

✓ LAS Version And Point Record Formats	
v1.4, Point Record Format 6	180 of 180 Tiles

✓ Spatial Reference System		
Horizontal Projection	NAD83(2011) / UTM zone 14N	180 of 180 Tiles
Horizontal Datum	NAD83 (National Spatial Reference System 2011)	180 of 180 Tiles
Horizontal Units	meter	180 of 180 Tiles
Vertical Datum	NAVD88 height	180 of 180 Tiles
Vertical Units	meter	180 of 180 Tiles
Storage Method	WKT	180 of 180 Tiles

✓ GPS Time Type	
Adjusted	180 of 180 Tiles

✓ File Source ID Equals 0	
Yes	180 of 180 Tiles

✓ VLR/EVLR Reserved Equals 0	
Yes	402 of 402 Records

✓ Unnecessary Bytes At End Of File	
No	180 of 180 Tiles

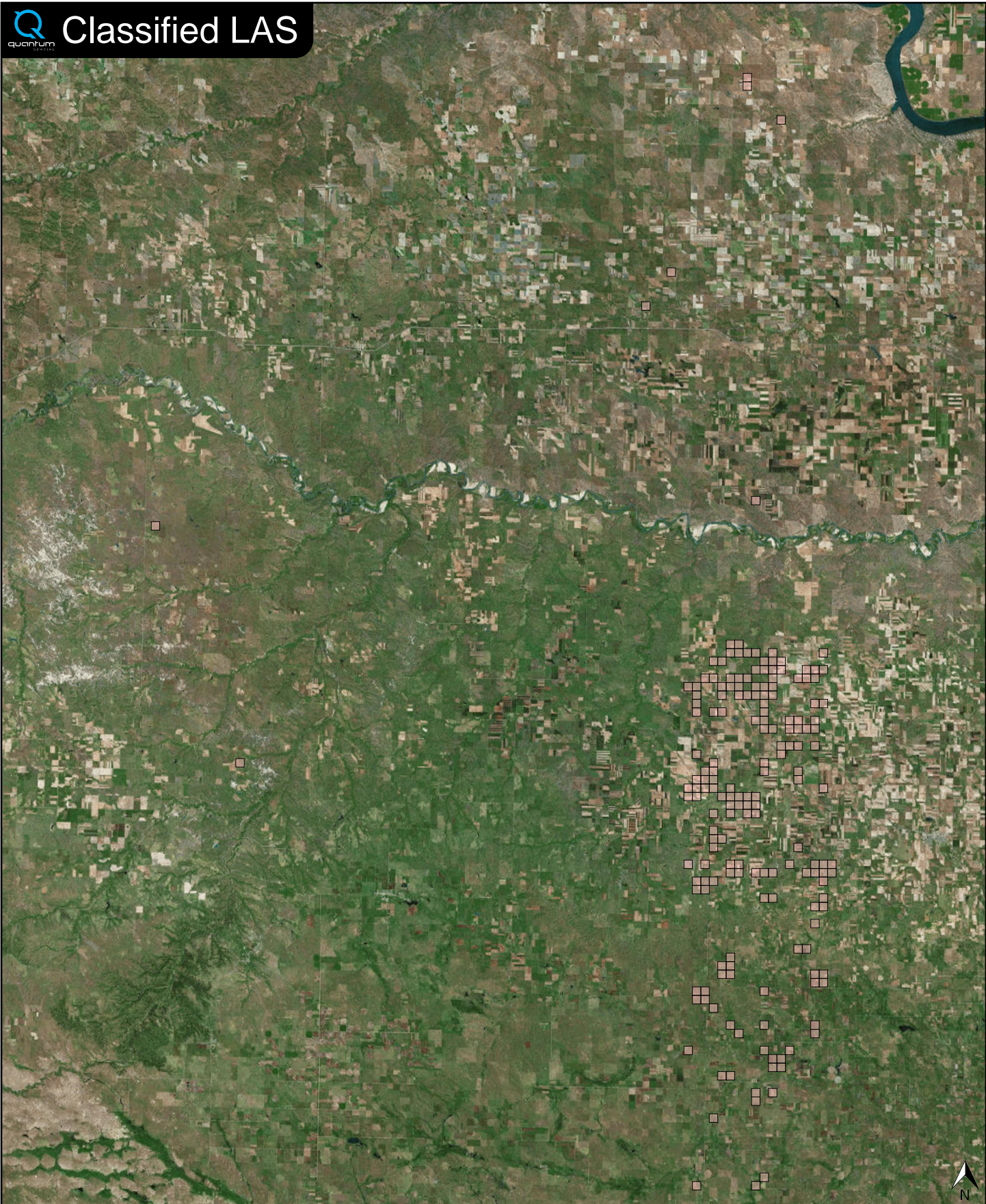
✓ Legacy Point Count Check	
Zero	180 of 180 Tiles

✓ System Identifier	
Quantum Spatial	180 of 180 Tiles

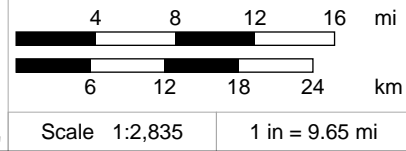
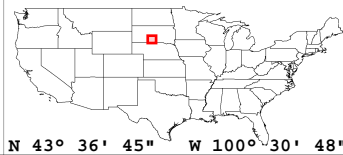
✓ Generating Software	
LiDAR Suite	180 of 180 Tiles



Classified LAS



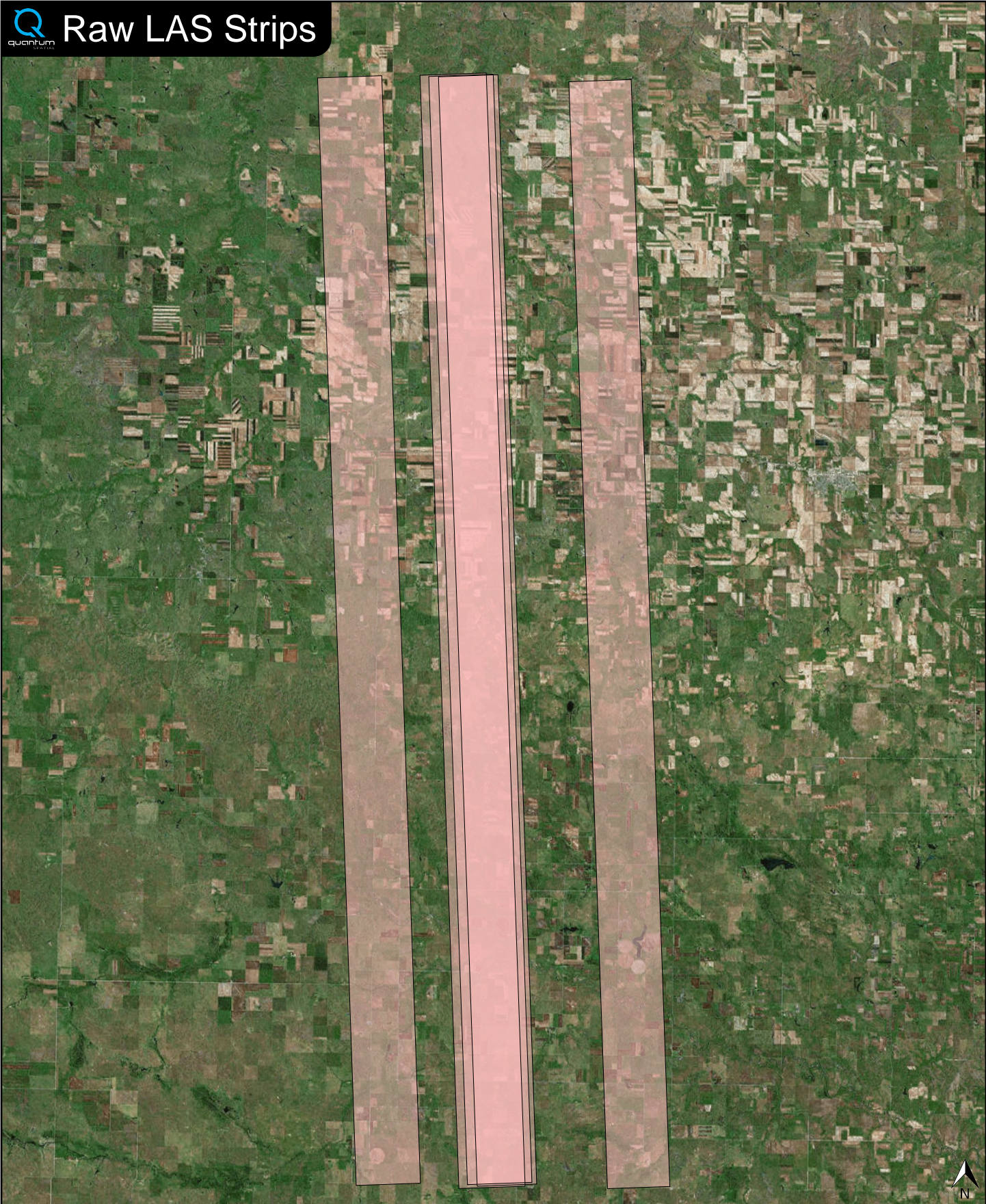
 Classified LAS Tiles (180)



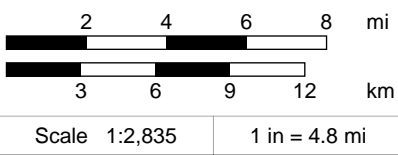
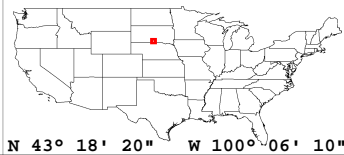
Raw LAS Flight Line Strips

Deliverable 2 Summary

✓ General		
Folder:	F:\USGS_South_Dakota_LiDAR_Revisions\Delivery_2\point_cloud\swathuncls	
Total # of Files:	5	(All Valid)
Total File Size:	41.1 GB	(44,110,796,185 bytes)
✓ Raw LAS Strips		
Elevation Range:	455m to 1194m	
✓ LAS Version And Point Record Formats		
v1.4, Point Record Format 6		5 of 5 Strips
✓ Spatial Reference System		
Horizontal Projection	NAD83(2011) / UTM zone 14N	5 of 5 Strips
Horizontal Datum	NAD83 (National Spatial Reference System 2011)	5 of 5 Strips
Horizontal Units	meter	5 of 5 Strips
Vertical Datum	NAVD88 height	5 of 5 Strips
Vertical Units	meter	5 of 5 Strips
Storage Method	WKT	5 of 5 Strips
✓ GPS Time Type		
Adjusted		5 of 5 Strips
✓ File Source IDs		
Equals Zero:	None	
All Unique:	Yes	
FLs:	176, 188 - 190, 205	
✓ VLR/EVLR Reserved Equals 0		
Yes		10 of 10 Records
✓ Unnecessary Bytes At End Of File		
No		5 of 5 Strips
✓ Legacy Point Count Check		
Zero		5 of 5 Strips
✓ System Identifier		
Quantum Spatial		5 of 5 Strips
✓ Generating Software		
LiDAR Suite		5 of 5 Strips



FL Strips (5)

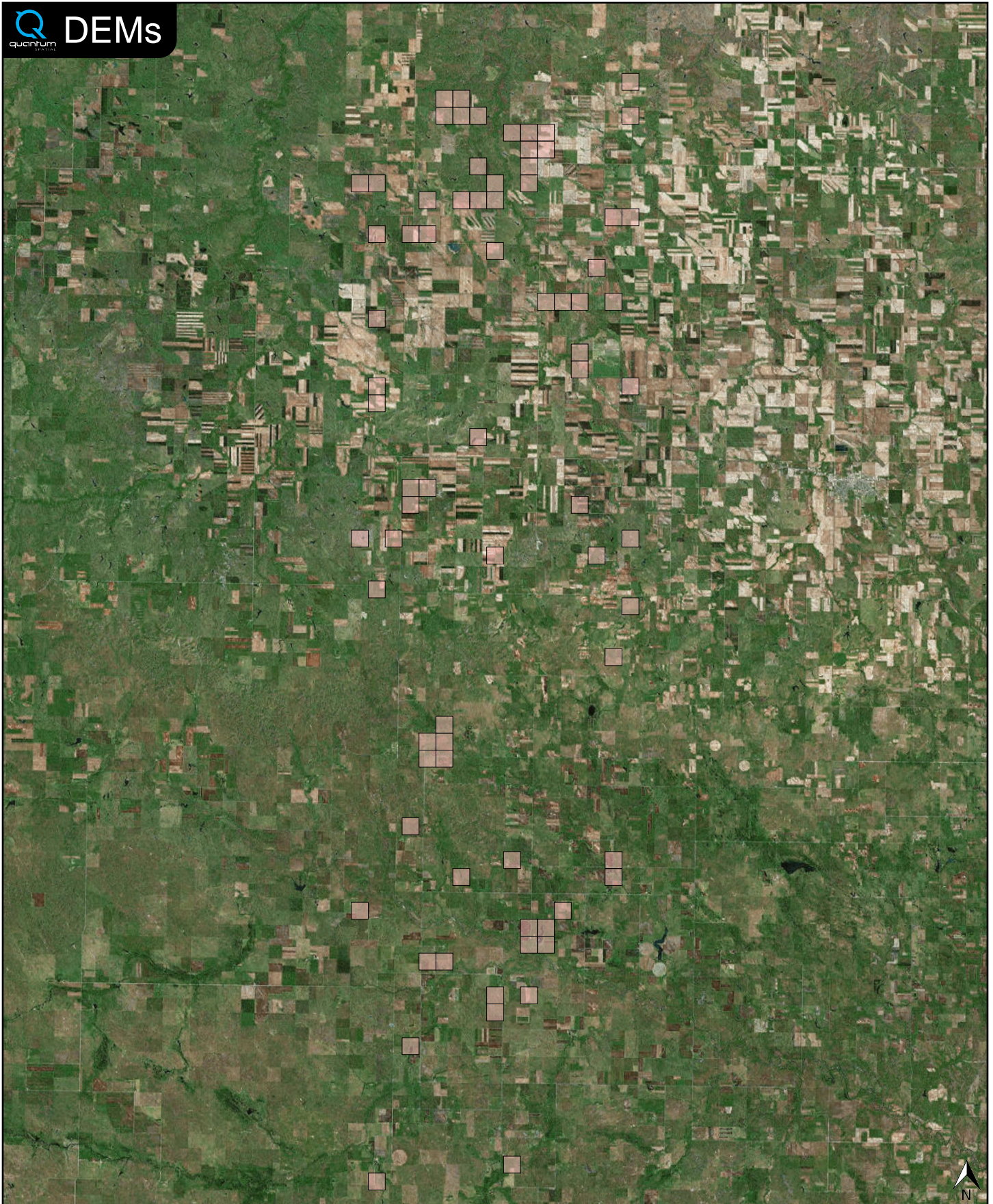


✓ General		
Folder:	F:\USGS_South_Dakota_LiDAR_Revisions\Delivery_2\bare_earth\be_rasters	
Total # of Files:	76	(All Valid)
Total File Size:	1.2 GB	(1,276,777,724 bytes)

✓ Tile Sizes	
Median Tile Size:	1,000m x 1,000m
Minimum Tile Size:	1,000m x 1,000m
Maximum Tile Size:	1,000m x 1,000m
X Range:	401000.00m to 418000.00m
Y Range:	4761000.00m to 4827000.00m
Elevation Range:	0.00m to 789.65m

✓ Spatial Reference System		
Horizontal Projection	NAD_1983_2011_UTM_Zone_14N	76 of 76 Tiles
Horizontal Datum	D_NAD_1983_2011	76 of 76 Tiles
Horizontal Units	Meter	76 of 76 Tiles
Vertical Datum	NAVD88 height	76 of 76 Tiles
Vertical Units	Meter	76 of 76 Tiles

✓ Raster		
File Type:	IMG	76 of 76
Bands:	1	76 of 76
Grid Size (pixels):	2000 x 2000	76 of 76
Pixel Resolution:	0.50000000m x 0.50000000m	76 of 76
Pixel Type:	32-bit Floating Point	76 of 76
Compression:	None	76 of 76
No Data Value:	-32767	76 of 76



DEM Tiles (76)

