

Classified Point Cloud

Deliverable 1 Summary

| ✓ General | | |
|-------------------|---|---------------------------|
| Folder: | E:\South_Dakota_Delivery4\point_cloud\tilecls | |
| Total # of Files: | 6,189 | (All Valid) |
| Total File Size: | 1.3 TB | (1,386,500,238,566 bytes) |

| ✓ Tile Sizes | | |
|--------------------|----------------------------|--|
| Median Tile Size: | 1,000m x 1,000m | |
| Minimum Tile Size: | 762m x 1,000m | |
| Maximum Tile Size: | 1,000m x 1,000m | |
| X Range: | 263015.32m to 401999.99m | |
| Y Range: | 4996000.00m to 5042000.00m | |
| Elevation Range: | -158.27m to 1590.67m | |

| ✓ LAS Version And Point Record Formats | | |
|--|----------------------|--|
| v1.4, Point Record Format 6 | 6,189 of 6,189 Tiles | |

| ✓ Spatial Reference System | | |
|----------------------------|--|----------------------|
| Horizontal Projection | NAD83(2011) / UTM zone 14N | 6,189 of 6,189 Tiles |
| Horizontal Datum | NAD83 (National Spatial Reference System 2011) | 6,189 of 6,189 Tiles |
| Horizontal Units | meter | 6,189 of 6,189 Tiles |
| Vertical Datum | NAVD88 height | 6,189 of 6,189 Tiles |
| Vertical Units | meter | 6,189 of 6,189 Tiles |
| Storage Method | WKT | 6,189 of 6,189 Tiles |

| ✓ GPS Time Type | | |
|-----------------|----------------------|--|
| Adjusted | 6,189 of 6,189 Tiles | |

| ✓ File Source ID Equals 0 | | |
|---------------------------|----------------------|--|
| Yes | 6,189 of 6,189 Tiles | |

| ✓ VLR/EVLR Reserved Equals 0 | | |
|------------------------------|------------------------|--|
| Yes | 6,506 of 6,506 Records | |

| ✓ Unnecessary Bytes At End Of File | | |
|------------------------------------|----------------------|--|
| No | 6,189 of 6,189 Tiles | |

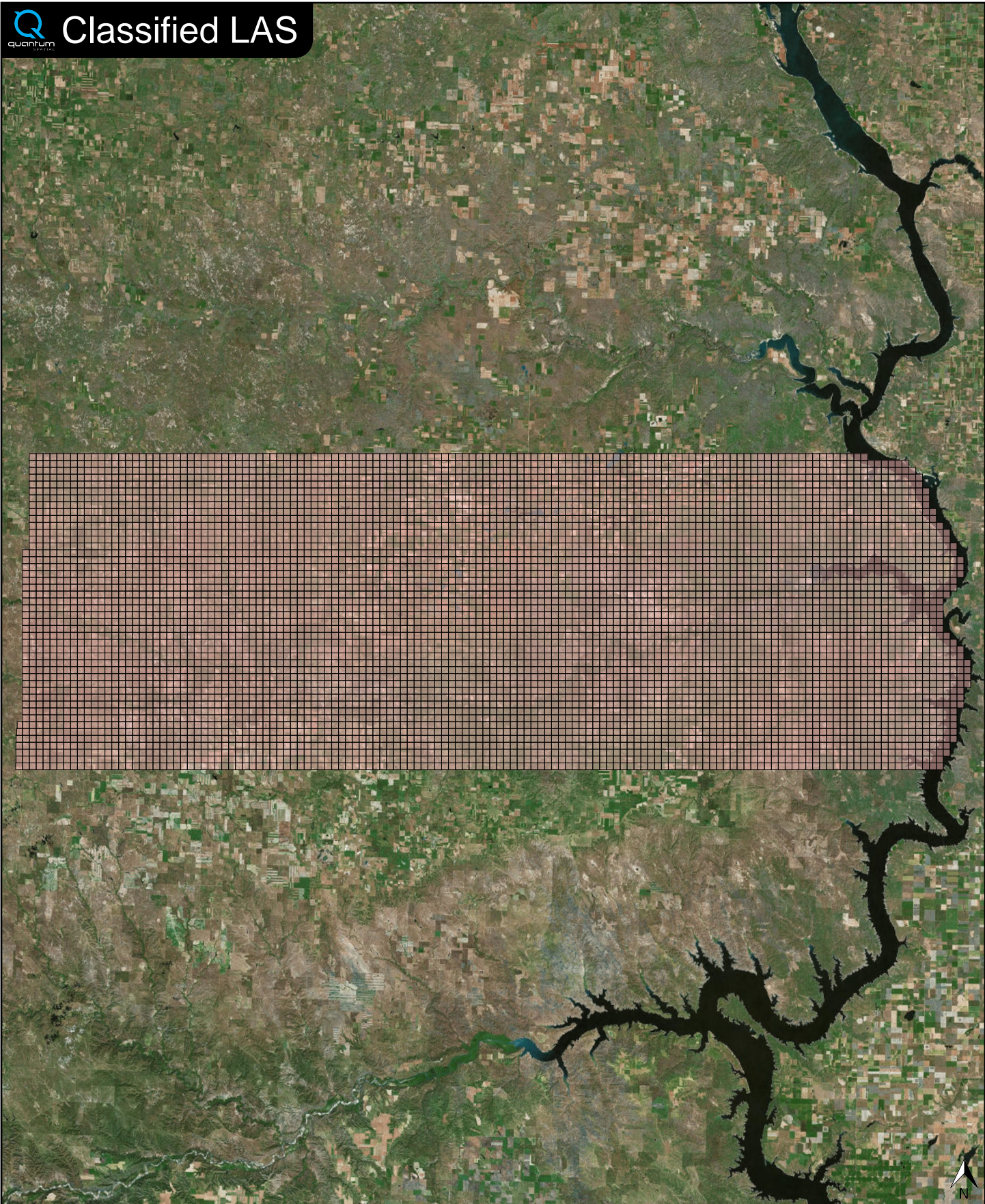
| ✓ Legacy Point Count Check | | |
|----------------------------|----------------------|--|
| Zero | 6,189 of 6,189 Tiles | |

| ✓ System Identifier | | |
|---------------------|----------------------|--|
| Quantum Spatial | 6,189 of 6,189 Tiles | |

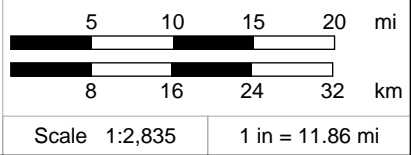
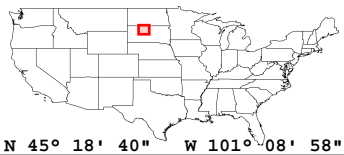
| ✓ Generating Software | | |
|-----------------------|----------------------|--|
| LiDAR Suite | 6,189 of 6,189 Tiles | |



Classified LAS



Classified LAS Tiles (6,189)

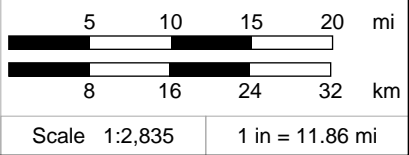
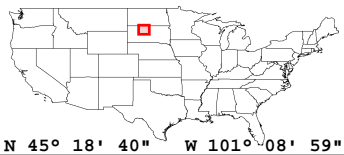
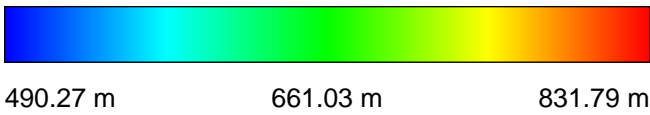
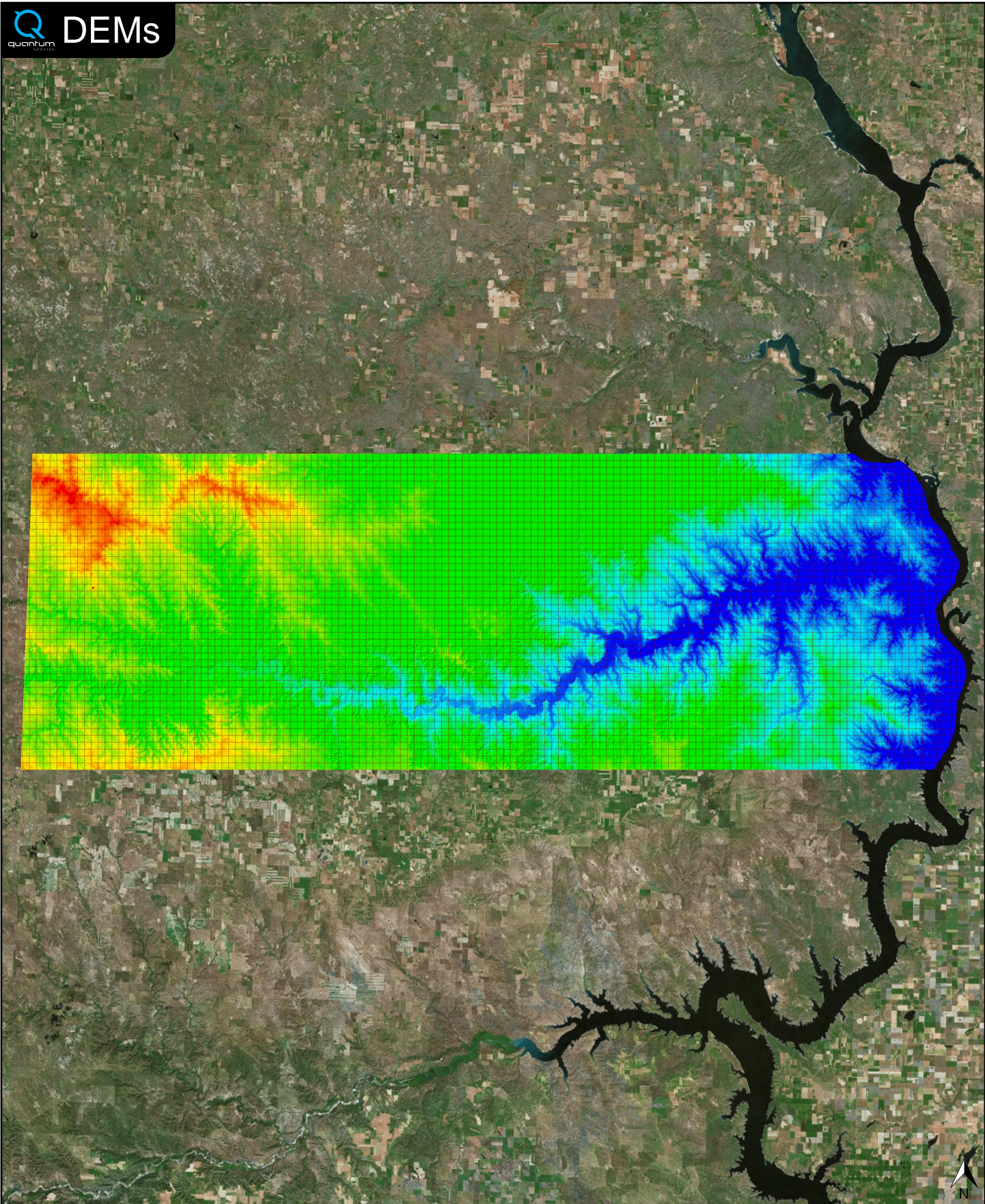


| ✓ General | | |
|-------------------|---|-------------------------|
| Folder: | E:\South_Dakota_Delivery4\bare_earth\be_rasters | |
| Total # of Files: | 6,189 | (All Valid) |
| Total File Size: | 96.8 GB | (103,962,079,320 bytes) |

| ✓ Tile Sizes | | |
|--------------------|----------------------------|--|
| Median Tile Size: | 1,000m x 1,000m | |
| Minimum Tile Size: | 1,000m x 1,000m | |
| Maximum Tile Size: | 1,000m x 1,000m | |
| X Range: | 263000.00m to 402000.00m | |
| Y Range: | 4996000.00m to 5042000.00m | |
| Elevation Range: | 490.17m to 835.99m | |

| ✓ Spatial Reference System | | |
|----------------------------|----------------------------|----------------------|
| Horizontal Projection | NAD_1983_2011_UTM_Zone_14N | 6,189 of 6,189 Tiles |
| Horizontal Datum | D_NAD_1983_2011 | 6,189 of 6,189 Tiles |
| Horizontal Units | Meter | 6,189 of 6,189 Tiles |
| Vertical Datum | NAVD88 height | 6,189 of 6,189 Tiles |
| Vertical Units | Meter | 6,189 of 6,189 Tiles |

| ✓ Raster | | |
|---------------------|---------------------------|----------------|
| File Type: | IMG | 6,189 of 6,189 |
| Bands: | 1 | 6,189 of 6,189 |
| Grid Size (pixels): | 2000 x 2000 | 6,189 of 6,189 |
| Pixel Resolution: | 0.50000000m x 0.50000000m | 6,189 of 6,189 |
| Pixel Type: | 32-bit Floating Point | 6,189 of 6,189 |
| Compression: | None | 6,189 of 6,189 |
| No Data Value: | -32767 | 6,189 of 6,189 |



| ✓ General | | |
|-------------------|--|------------------------|
| Folder: | E:\South_Dakota_Delivery4\other\Intensity_Images | |
| Total # of Files: | 6,189 | (All Valid) |
| Total File Size: | 32.4 GB | (34,799,472,066 bytes) |

| ✓ Tile Sizes | |
|--------------------|----------------------------|
| Median Tile Size: | 1,000m x 1,000m |
| Minimum Tile Size: | 1,000m x 1,000m |
| Maximum Tile Size: | 1,000m x 1,000m |
| X Range: | 263000.00m to 402000.00m |
| Y Range: | 4996000.00m to 5042000.00m |

| ✓ Spatial Reference System | | |
|----------------------------|----------------------------|----------------------|
| Horizontal Projection | NAD_1983_2011_UTM_Zone_14N | 6,189 of 6,189 Tiles |
| Horizontal Datum | NAD_1983_2011 | 6,189 of 6,189 Tiles |
| Horizontal Units | Meter | 6,189 of 6,189 Tiles |
| Vertical Datum | NAVD88 height | 6,189 of 6,189 Tiles |
| Vertical Units | Meter | 6,189 of 6,189 Tiles |

| ✓ Raster | | |
|---------------------|-------------------------------------|----------------|
| File Type: | TIF | 6,189 of 6,189 |
| Bands: | 1 | 6,189 of 6,189 |
| Grid Size (pixels): | 2000 x 2000 | 6,189 of 6,189 |
| Pixel Resolution: | 0.50000000m x 0.50000000m | 6,189 of 6,189 |
| Pixel Type: | 8-bit Unsigned Integer (MINISBLACK) | 6,189 of 6,189 |
| Compression: | NONE | 6,189 of 6,189 |
| No Data Value: | NONE | 6,189 of 6,189 |

