

Classified Point Cloud

Deliverable 1 Summary

✓ General	
Folder:	F:\South_Dakota_Delivery5\point_cloud\tilecls
Total # of Files:	6,183 (All Valid)
Total File Size:	1.2 TB (1,339,425,342,122 bytes)

✓ Tile Sizes	
Median Tile Size:	1,000m x 1,000m
Minimum Tile Size:	991m x 999m
Maximum Tile Size:	1,000m x 1,000m
X Range:	265000.00m to 398999.99m
Y Range:	5042000.00m to 5093000.00m
Elevation Range:	-113.74m to 1775.71m

✓ LAS Version And Point Record Formats	
v1.4, Point Record Format 6	6,183 of 6,183 Tiles

✓ Spatial Reference System		
Horizontal Projection	NAD83(2011) / UTM zone 14N	6,183 of 6,183 Tiles
Horizontal Datum	NAD83 (National Spatial Reference System 2011)	6,183 of 6,183 Tiles
Horizontal Units	meter	6,183 of 6,183 Tiles
Vertical Datum	NAVD88 height	6,183 of 6,183 Tiles
Vertical Units	meter	6,183 of 6,183 Tiles
Storage Method	WKT	6,183 of 6,183 Tiles

✓ GPS Time Type	
Adjusted	6,183 of 6,183 Tiles

✓ File Source ID Equals 0	
Yes	6,183 of 6,183 Tiles

✓ VLR/EVLR Reserved Equals 0	
Yes	6,543 of 6,543 Records

✓ Unnecessary Bytes At End Of File	
No	6,183 of 6,183 Tiles

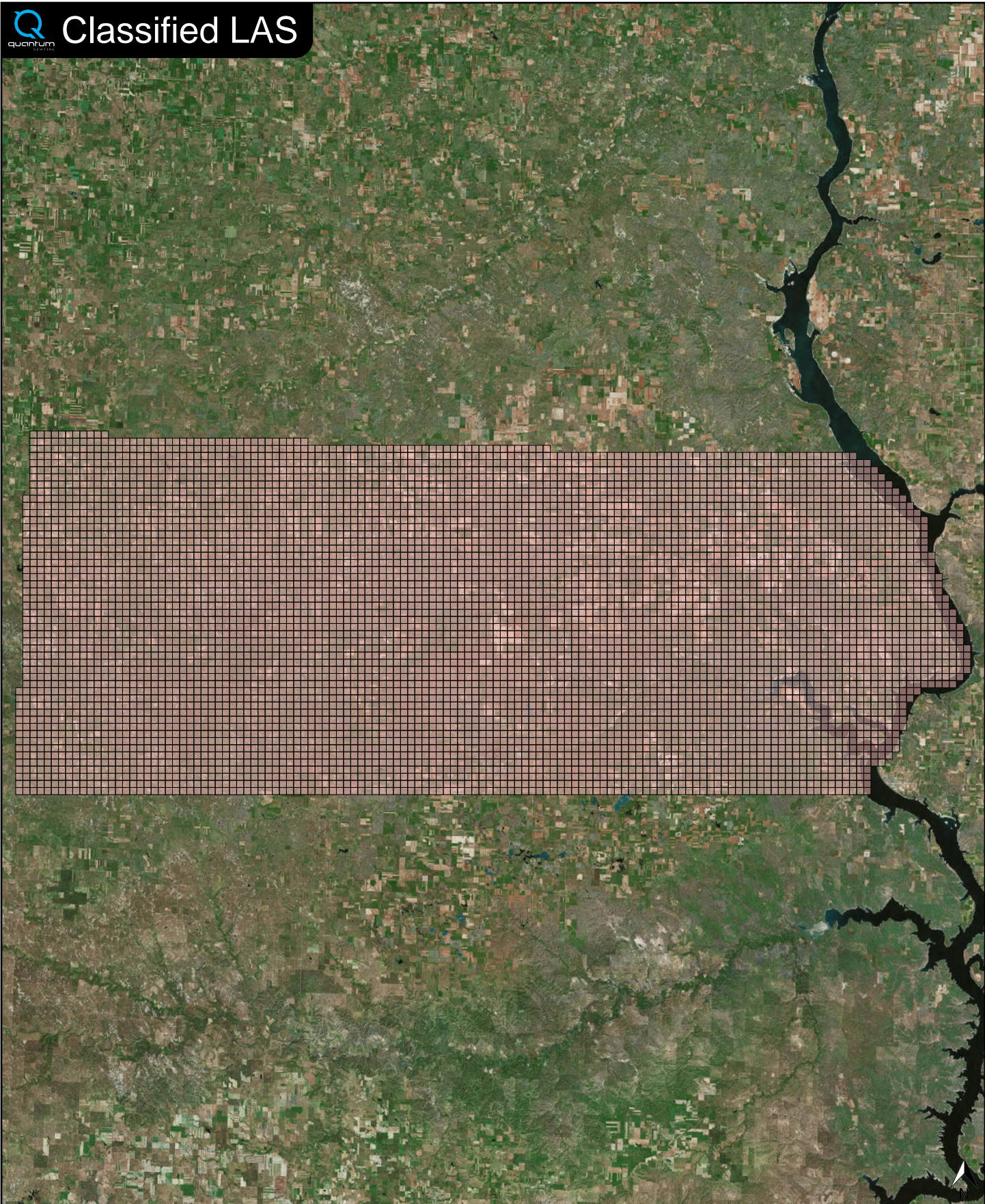
✓ Legacy Point Count Check	
Zero	6,183 of 6,183 Tiles

✓ System Identifier	
Quantum Spatial	6,183 of 6,183 Tiles

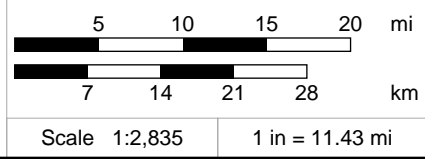
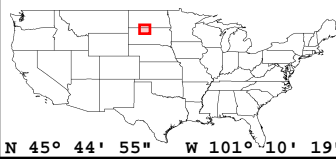
✓ Generating Software	
LiDAR Suite	6,183 of 6,183 Tiles



Classified LAS



Classified LAS Tiles (6,183)

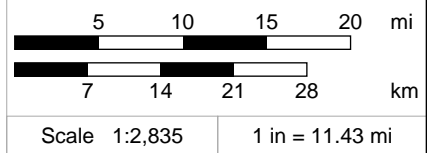
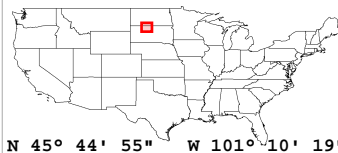
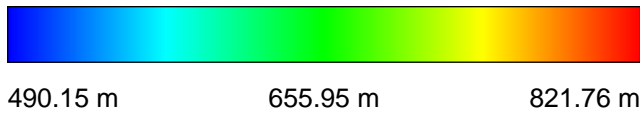
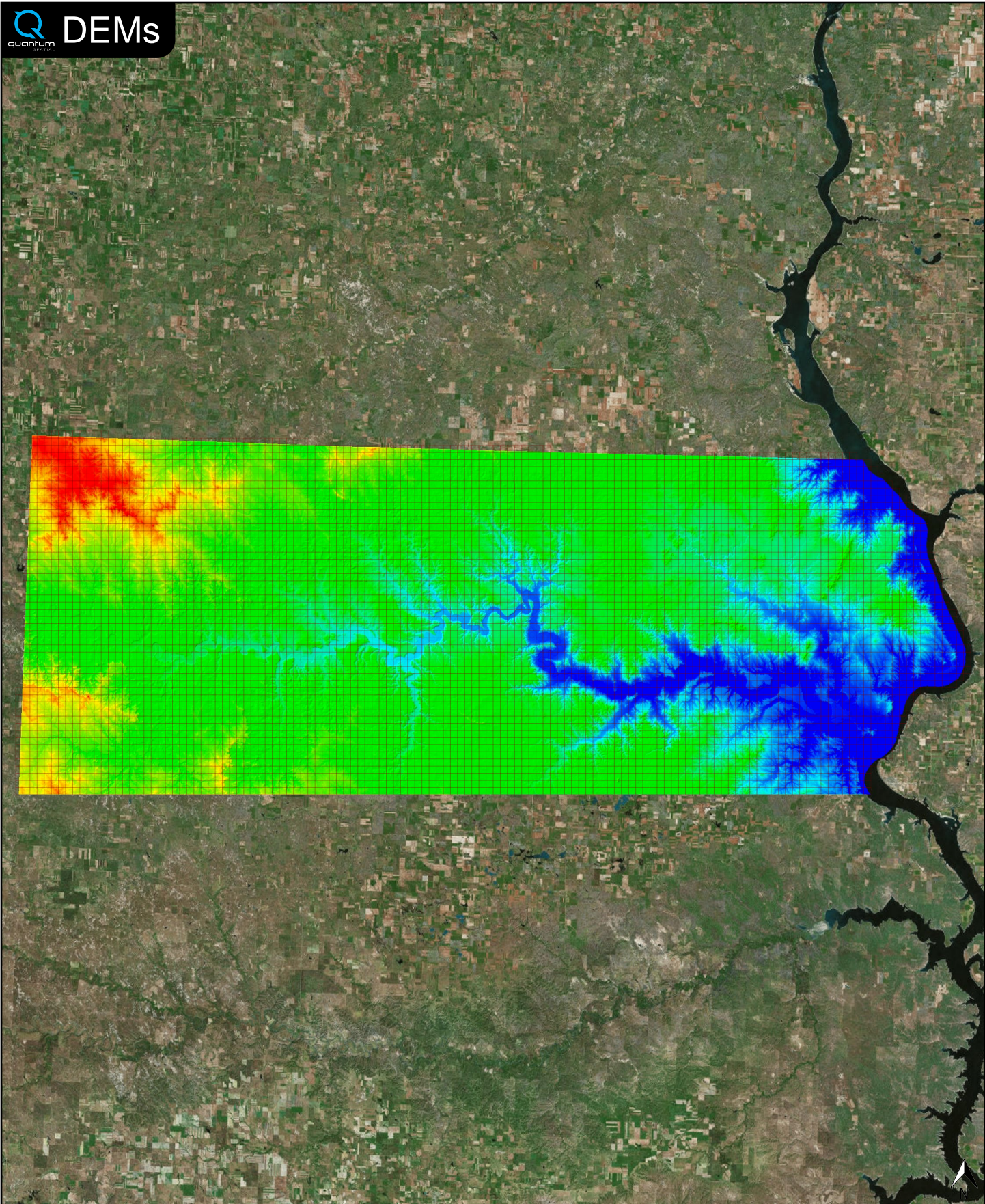


✓ General		
Folder:	F:\South_Dakota_Delivery5\bare_earth\be_rasters	
Total # of Files:	6,183	(All Valid)
Total File Size:	96.7 GB	(103,861,292,040 bytes)

✓ Tile Sizes		
Median Tile Size:	1,000m x 1,000m	
Minimum Tile Size:	1,000m x 1,000m	
Maximum Tile Size:	1,000m x 1,000m	
X Range:	265000.00m to 399000.00m	
Y Range:	5042000.00m to 5093000.00m	
Elevation Range:	490.09m to 829.62m	

✓ Spatial Reference System		
Horizontal Projection	NAD_1983_2011_UTM_Zone_14N	6,183 of 6,183 Tiles
Horizontal Datum	D_NAD_1983_2011	6,183 of 6,183 Tiles
Horizontal Units	Meter	6,183 of 6,183 Tiles
Vertical Datum	NAVD88 height	6,183 of 6,183 Tiles
Vertical Units	Meter	6,183 of 6,183 Tiles

✓ Raster		
File Type:	IMG	6,183 of 6,183
Bands:	1	6,183 of 6,183
Grid Size (pixels):	2000 x 2000	6,183 of 6,183
Pixel Resolution:	0.50000000m x 0.50000000m	6,183 of 6,183
Pixel Type:	32-bit Floating Point	6,183 of 6,183
Compression:	None	6,183 of 6,183
No Data Value:	-32767	6,183 of 6,183



✓ General		
Folder:	F:\South_Dakota_Delivery5\other\Intensity_Images	
Total # of Files:	6,183	(All Valid)
Total File Size:	32.4 GB	(34,765,735,302 bytes)

✓ Tile Sizes	
Median Tile Size:	1,000m x 1,000m
Minimum Tile Size:	1,000m x 1,000m
Maximum Tile Size:	1,000m x 1,000m
X Range:	265000.00m to 399000.00m
Y Range:	5042000.00m to 5093000.00m

✓ Spatial Reference System		
Horizontal Projection	NAD_1983_2011_UTM_Zone_14N	6,183 of 6,183 Tiles
Horizontal Datum	NAD_1983_2011	6,183 of 6,183 Tiles
Horizontal Units	Meter	6,183 of 6,183 Tiles
Vertical Datum	NAVD88 height	6,183 of 6,183 Tiles
Vertical Units	Meter	6,183 of 6,183 Tiles

✓ Raster		
File Type:	TIF	6,183 of 6,183
Bands:	1	6,183 of 6,183
Grid Size (pixels):	2000 x 2000	6,183 of 6,183
Pixel Resolution:	0.50000000m x 0.50000000m	6,183 of 6,183
Pixel Type:	8-bit Unsigned Integer (MINISBLACK)	6,183 of 6,183
Compression:	NONE	6,183 of 6,183
No Data Value:	NONE	6,183 of 6,183

