

---

## Project Information

Prepared By: Adam Meinerz  
Project Name: Six County South Carolina DNR  
Sensor Info: Optech Orion M-200  
Required Nominal Pulse Spacing: 4.6  
Vendor Name: Dewberry  
Units: US Survey Feet  
Percent of Extent Tolerance: Extents Not Checked  
Date of Aquisition: Start: 3/7/2012 Finish: 3/10/2012

---

## Metadata Information

### Tile Index:

Path: Q:\1120426\Lidar\Abbeville\Tile\_Grid\Abbeville\_County\_Tile\_Grid.shp  
Number of Polys: 0

### Intensity:

Tile Index Attribute: Not Specified  
Path to Data: Not Specified  
Number of Data Files Matching Attribute: Not Specified

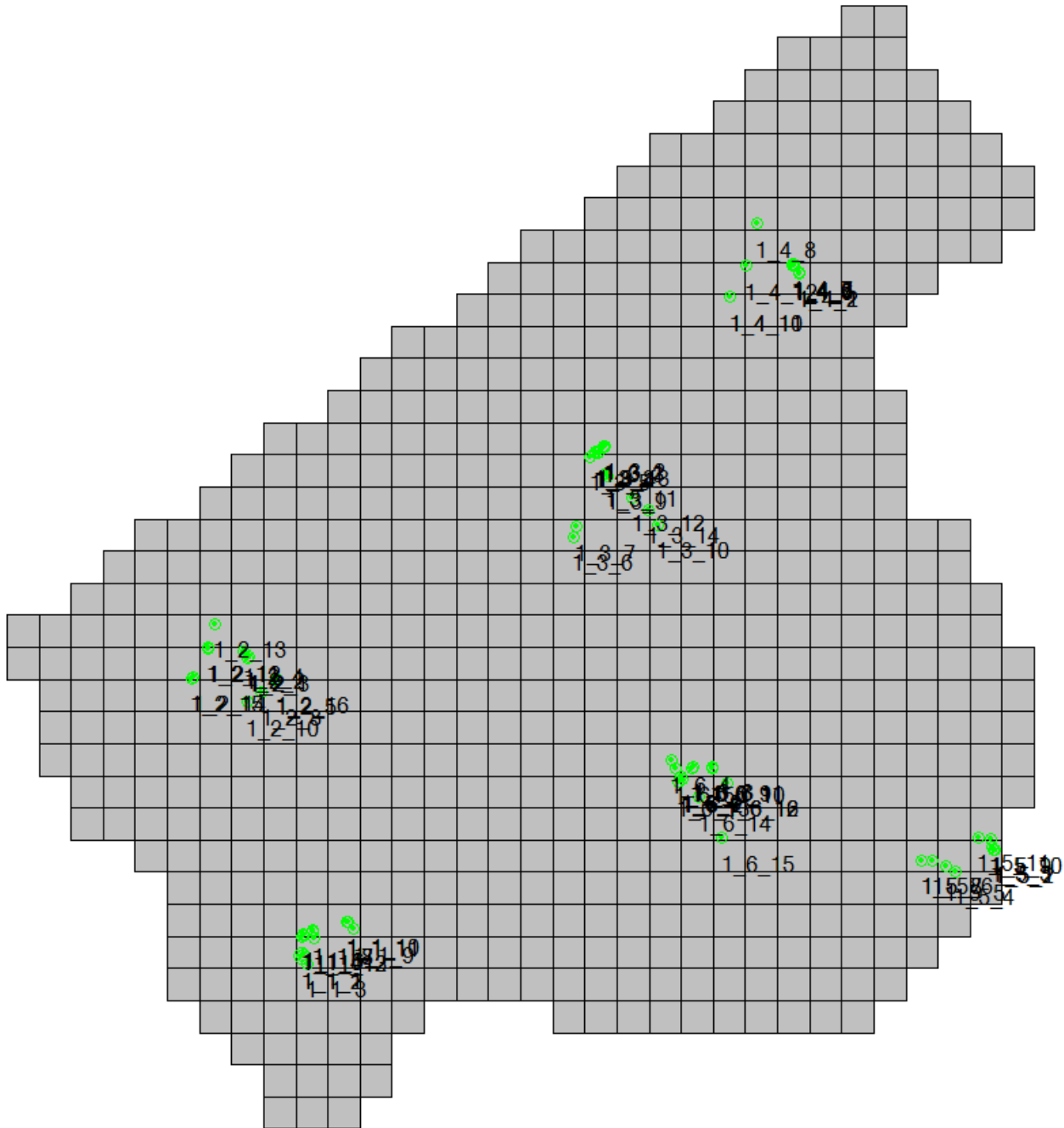
### DEM:

Tile Index Attribute: Not Specified  
Path to Data: Not Specified  
Number of Data Files Matching Attribute: Not Specified

### LAS:

Tile Index Attribute: Tile  
Path to Data: Q:\1120426\Lidar\Abbeville\Classified\_LAS  
Number of Data Files Matching Attribute: 664 out of 664

## Tiled-Data Area



LiDAR Accuracy Assessment Summary

LC Type	# of Points	FVA	SVA	CVA
LAS				
ALL	78			0.589
H	15		0.636	
B	13		0.684	
U	17		0.235	
O	20	0.439		
W	13		0.605	
Total	78			

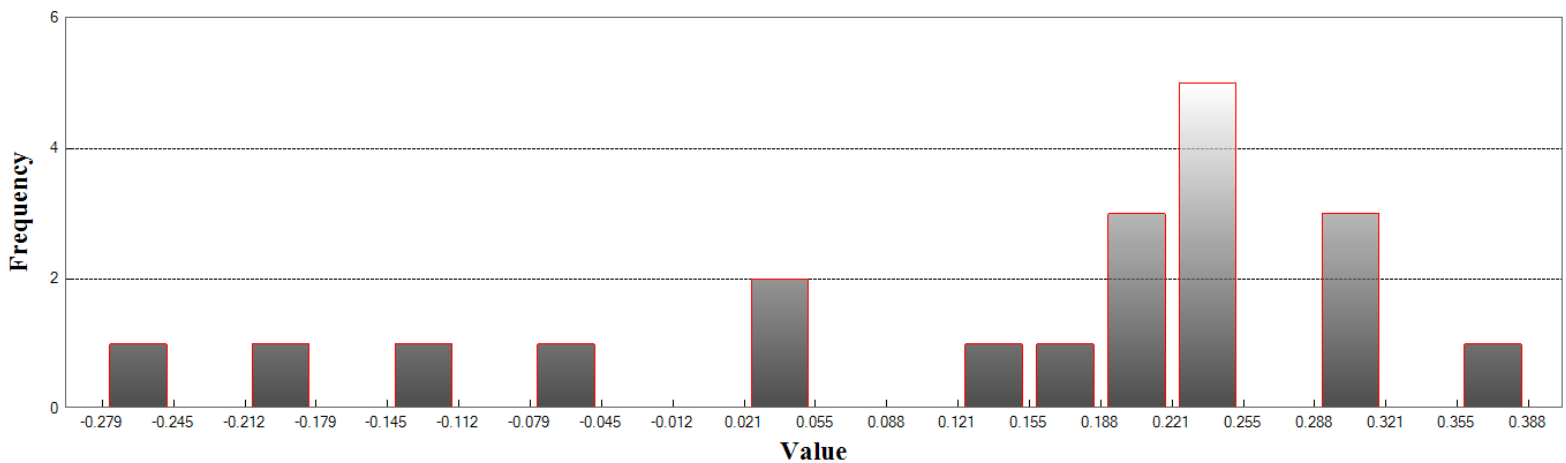
Units: US Survey Feet

# LAS

## Fundamental Vertical Accuracy

LandCover Type: O  
 Minimum DZ: -0.279  
 Maximum DZ: 0.388  
 Mean DZ: 0.139  
 Mean Magnitude DZ: 0.454  
 Number Observations: 20  
 Standard Deviation DZ: 0.18  
 RMSE Z: 0.224  
 95% Confidence Level Z: 0.439  
 Units: US Survey Feet

# Histogram



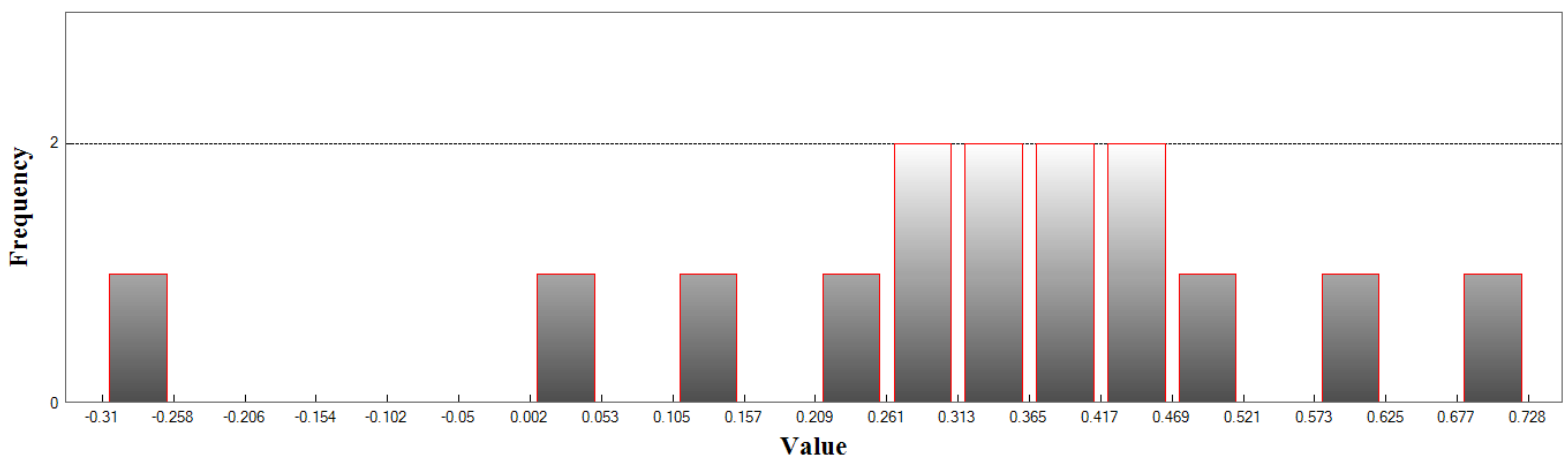
Min: -0.279  
 Max: 0.388  
 Number Of Bins: 20  
 Bin Interval: 0.033

## LAS (Continued)

### Supplemental Vertical Accuracy

LandCover Type: H  
 Minimum DZ: -0.31  
 Maximum DZ: 0.728  
 Mean DZ: 0.319  
 Mean Magnitude DZ: 0.601  
 Number Observations: 15  
 Standard Deviation DZ: 0.244  
 RMSE Z: 0.397  
 95th Percentile: 0.636  
 Units: US Survey Feet

## Histogram



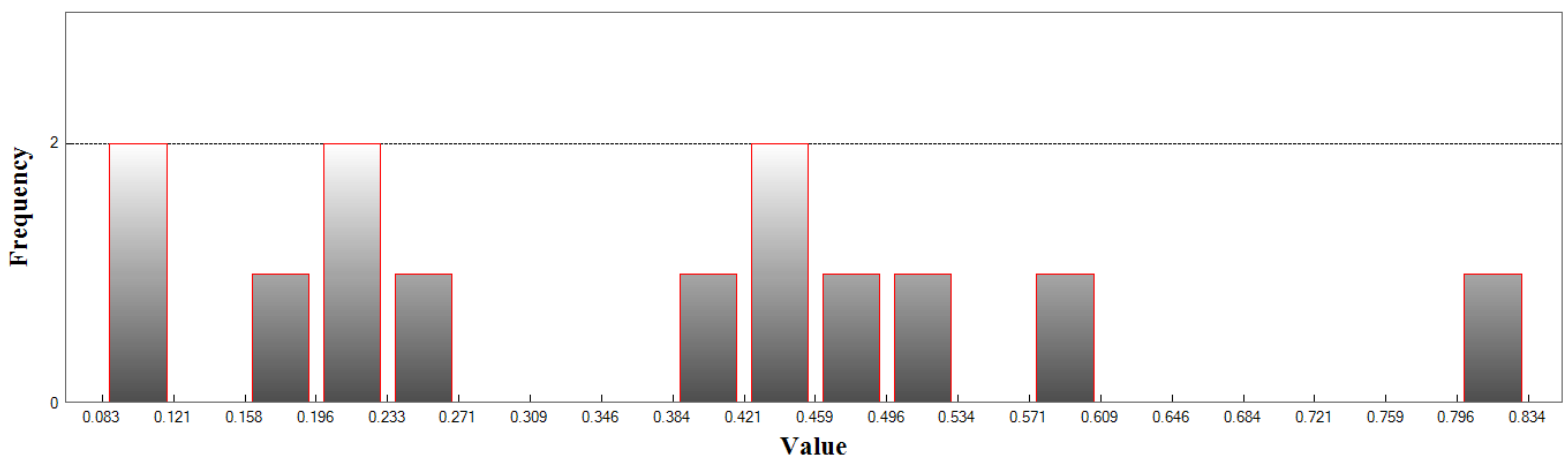
Min: -0.31  
 Max: 0.728  
 Number Of Bins: 20  
 Bin Interval: 0.052

## LAS (Continued)

### Supplemental Vertical Accuracy

LandCover Type: B  
Minimum DZ: 0.083  
Maximum DZ: 0.833  
Mean DZ: 0.36  
Mean Magnitude DZ: 0.6  
Number Observations: 13  
Standard Deviation DZ: 0.216  
RMSE Z: 0.416  
95th Percentile: 0.684  
Units: US Survey Feet

## Histogram



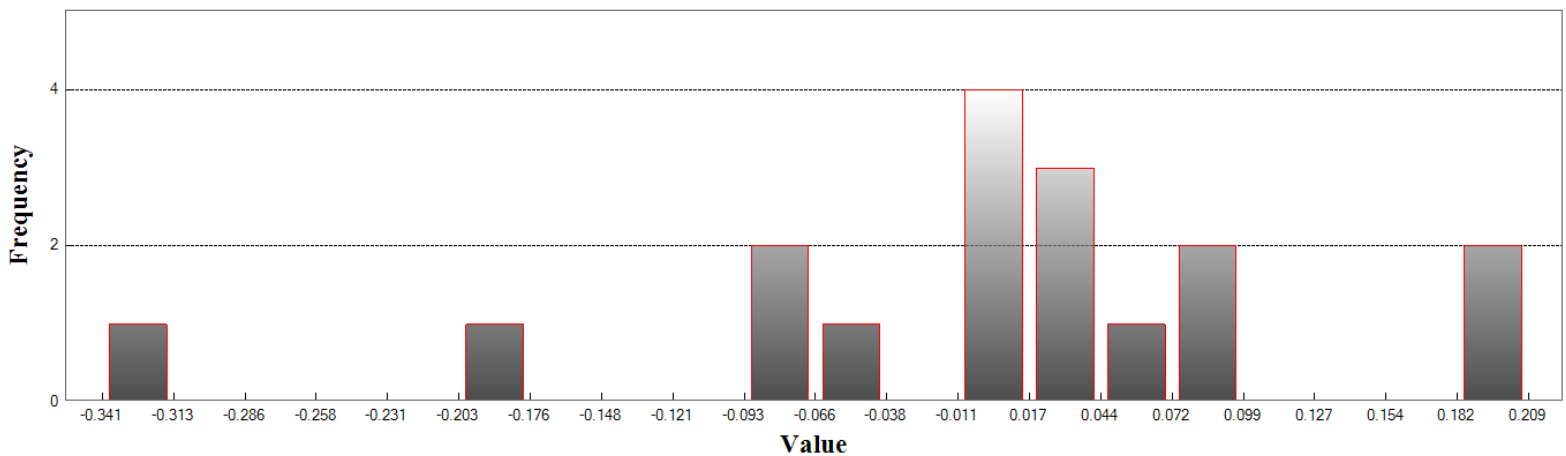
Min: 0.083  
Max: 0.833  
Number Of Bins: 20  
Bin Interval: 0.038

## LAS (Continued)

### Supplemental Vertical Accuracy

LandCover Type: U  
Minimum DZ: -0.341  
Maximum DZ: 0.209  
Mean DZ: 0.003  
Mean Magnitude DZ: 0.295  
Number Observations: 17  
Standard Deviation DZ: 0.129  
RMSE Z: 0.125  
95th Percentile: 0.235  
Units: US Survey Feet

## Histogram



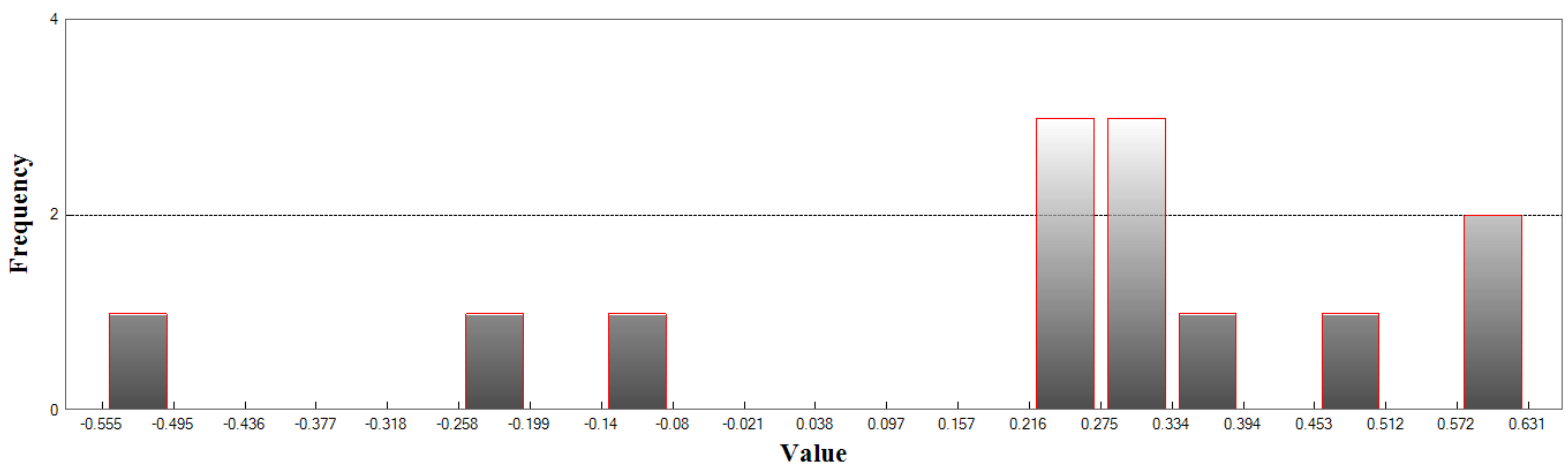
Min: -0.341  
Max: 0.209  
Number Of Bins: 20  
Bin Interval: 0.027

## LAS (Continued)

### Supplemental Vertical Accuracy

LandCover Type: W  
 Minimum DZ: -0.555  
 Maximum DZ: 0.63  
 Mean DZ: 0.213  
 Mean Magnitude DZ: 0.592  
 Number Observations: 13  
 Standard Deviation DZ: 0.333  
 RMSE Z: 0.384  
 95th Percentile: 0.605  
 Units: US Survey Feet

## Histogram



Min: -0.555

Max: 0.63

Number Of Bins: 20

Bin Interval: 0.059

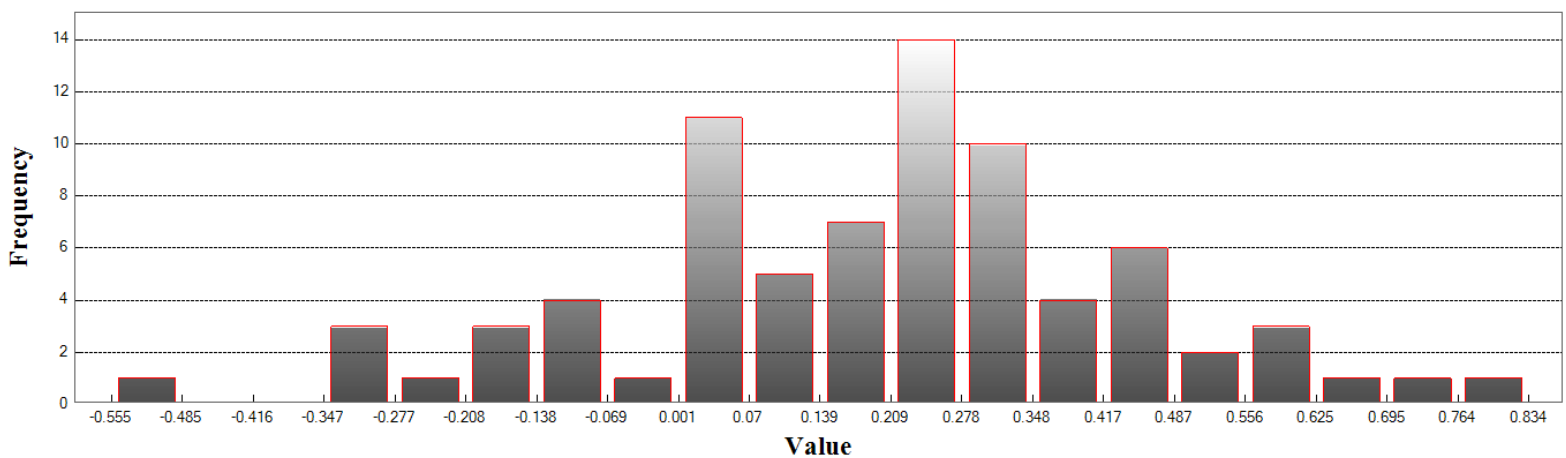


## LAS (Continued)

### Consolidated Vertical Accuracy

LandCover Type: ALL  
 Minimum DZ: -0.555  
 Maximum DZ: 0.833  
 Mean DZ: 0.193  
 Mean Magnitude DZ: 0.51  
 Number Observations: 78  
 Standard Deviation DZ: 0.252  
 RMSE Z: 0.316  
 95th Percentile: 0.589  
 Units: US Survey Feet

## Histogram



Min: -0.555  
 Max: 0.833  
 Number Of Bins: 20  
 Bin Interval: 0.069