
Project Information

Prepared By: Adam Meinerz
Project Name: Six County South Carolina DNR
Sensor Info: Optech Orion M-200
Required Nominal Pulse Spacing: 4.6
Vendor Name: Dewberry
Units: US Survey Feet
Percent of Extent Tolerance: Extents Not Checked
Date of Aquisition: Start: 3/7/2012 Finish: 3/10/2012

Metadata Information

Tile Index:

Path: Q:\1120426\Lidar\AIKENExternal_1\Aiken\Tile_Grid\Aiken_County_Tile_Grid.shp
Number of Polys: 0

Intensity:

Tile Index Attribute: Not Specified
Path to Data: Not Specified
Number of Data Files Matching Attribute: Not Specified

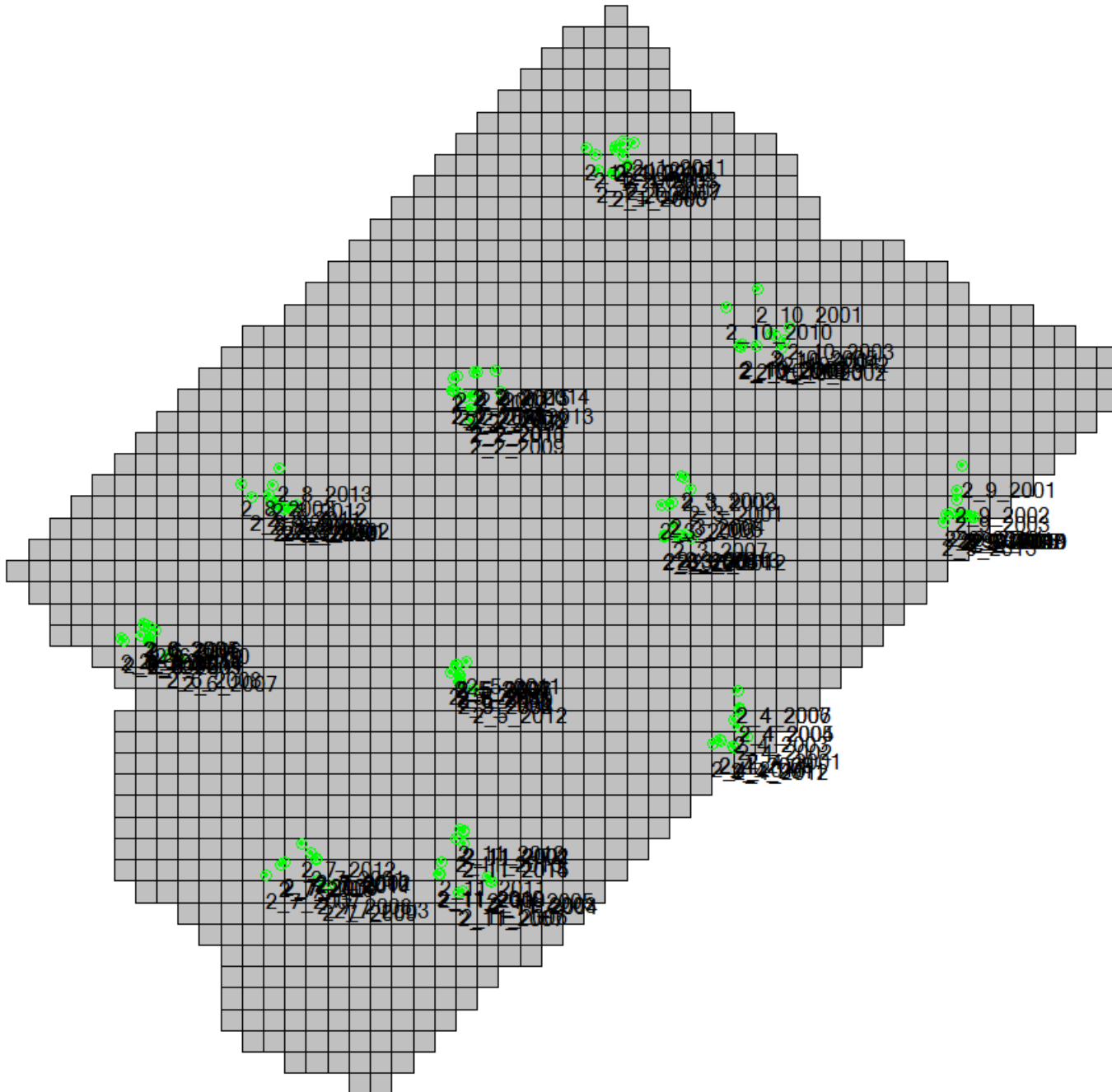
DEM:

Tile Index Attribute: Not Specified
Path to Data: Not Specified
Number of Data Files Matching Attribute: Not Specified

LAS:

Tile Index Attribute: Tile
Path to Data: Q:\1120426\Lidar\AIKENExternal_2\Aiken\Classified_LAS
Number of Data Files Matching Attribute: 1343 out of 1343

Tiled-Data Area



LiDAR Accuracy Assessment Summary

LC Type	# of Points	FVA	SVA	CVA
LAS				
ALL	143			0.664
B	24		0.556	
H	23		0.703	
W	26		0.681	
O	36	0.595		
U	34		0.375	
Total	143			

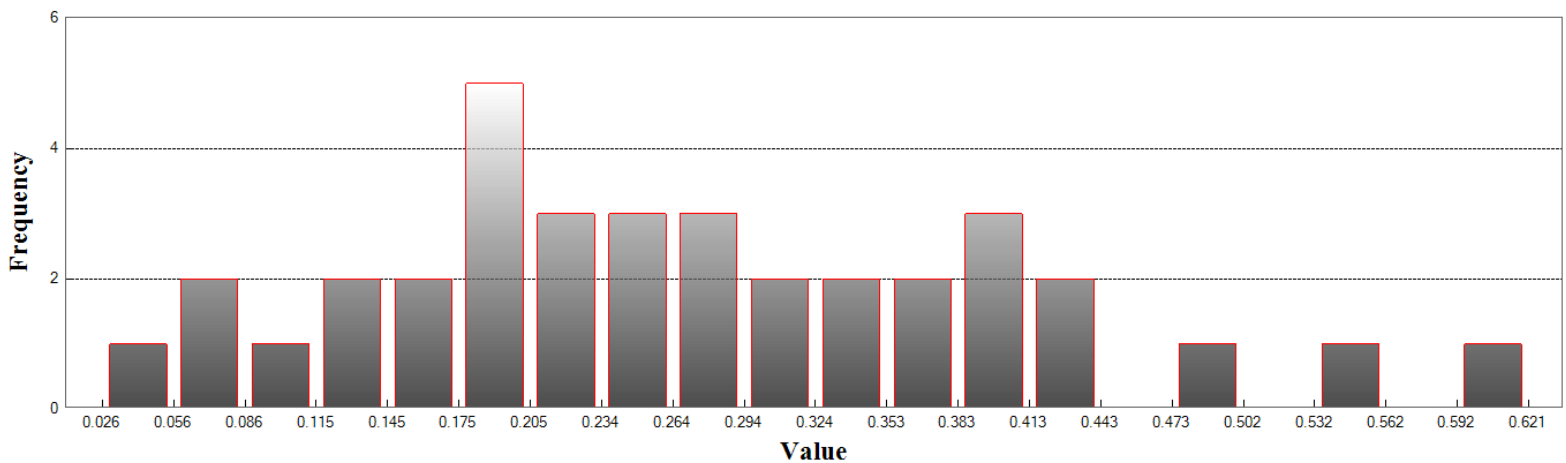
Units: US Survey Feet

LAS

Fundamental Vertical Accuracy

LandCover Type: O
 Minimum DZ: 0.026
 Maximum DZ: 0.621
 Mean DZ: 0.272
 Mean Magnitude DZ: 0.521
 Number Observations: 36
 Standard Deviation DZ: 0.137
 RMSE Z: 0.304
 95% Confidence Level Z: 0.595
 Units: US Survey Feet

Histogram



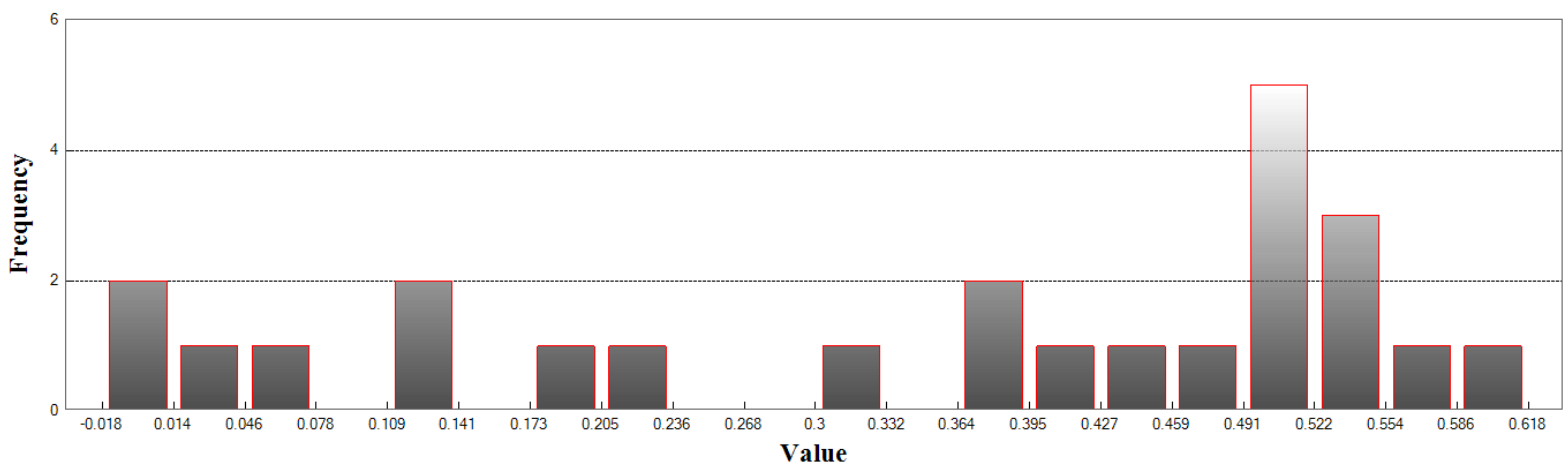
Min: 0.026
 Max: 0.621
 Number Of Bins: 20
 Bin Interval: 0.03

LAS (Continued)

Supplemental Vertical Accuracy

LandCover Type: B
 Minimum DZ: -0.018
 Maximum DZ: 0.618
 Mean DZ: 0.355
 Mean Magnitude DZ: 0.598
 Number Observations: 24
 Standard Deviation DZ: 0.206
 RMSE Z: 0.408
 95th Percentile: 0.556
 Units: US Survey Feet

Histogram



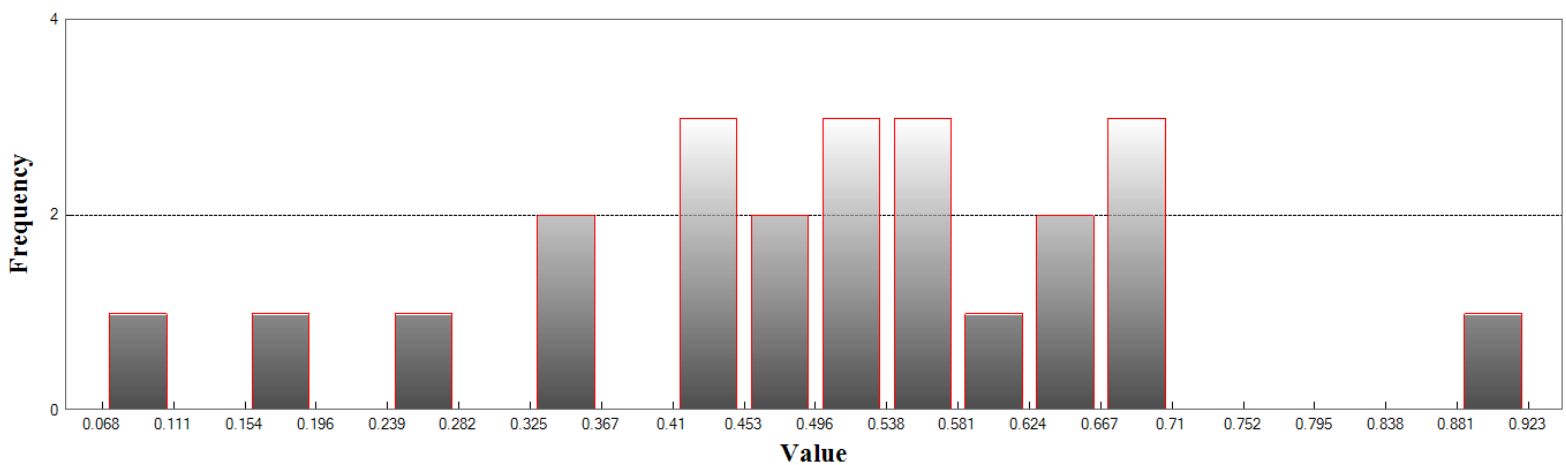
Min: -0.018
 Max: 0.618
 Number Of Bins: 20
 Bin Interval: 0.032

LAS (Continued)

Supplemental Vertical Accuracy

LandCover Type: H
 Minimum DZ: 0.068
 Maximum DZ: 0.924
 Mean DZ: 0.506
 Mean Magnitude DZ: 0.711
 Number Observations: 23
 Standard Deviation DZ: 0.188
 RMSE Z: 0.538
 95th Percentile: 0.703
 Units: US Survey Feet

Histogram



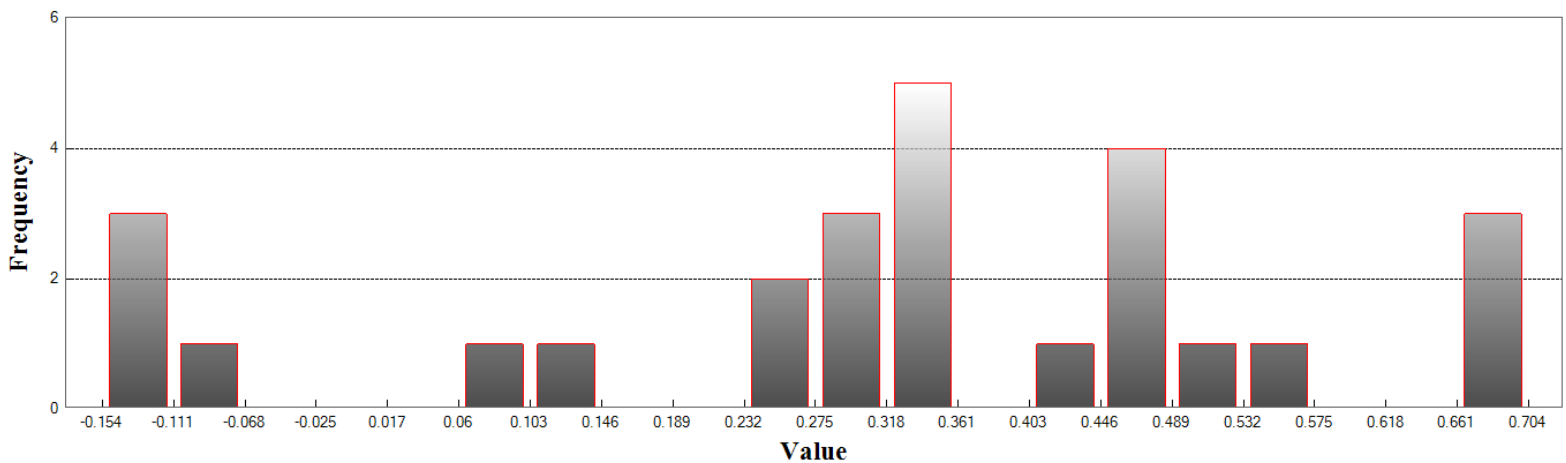
Min: 0.068
 Max: 0.924
 Number Of Bins: 20
 Bin Interval: 0.043

LAS (Continued)

Supplemental Vertical Accuracy

LandCover Type: W
 Minimum DZ: -0.154
 Maximum DZ: 0.704
 Mean DZ: 0.311
 Mean Magnitude DZ: 0.593
 Number Observations: 26
 Standard Deviation DZ: 0.247
 RMSE Z: 0.394
 95th Percentile: 0.681
 Units: US Survey Feet

Histogram



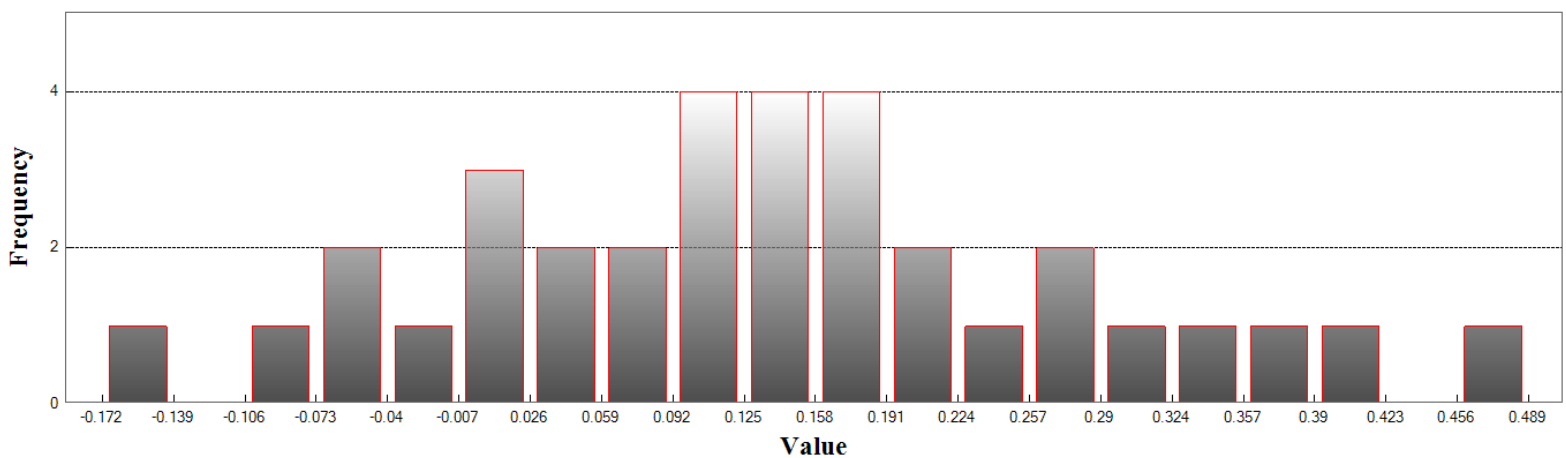
Min: -0.154
 Max: 0.704
 Number Of Bins: 20
 Bin Interval: 0.043

LAS (Continued)

Supplemental Vertical Accuracy

LandCover Type: U
 Minimum DZ: -0.173
 Maximum DZ: 0.488
 Mean DZ: 0.136
 Mean Magnitude DZ: 0.399
 Number Observations: 34
 Standard Deviation DZ: 0.146
 RMSE Z: 0.198
 95th Percentile: 0.375
 Units: US Survey Feet

Histogram



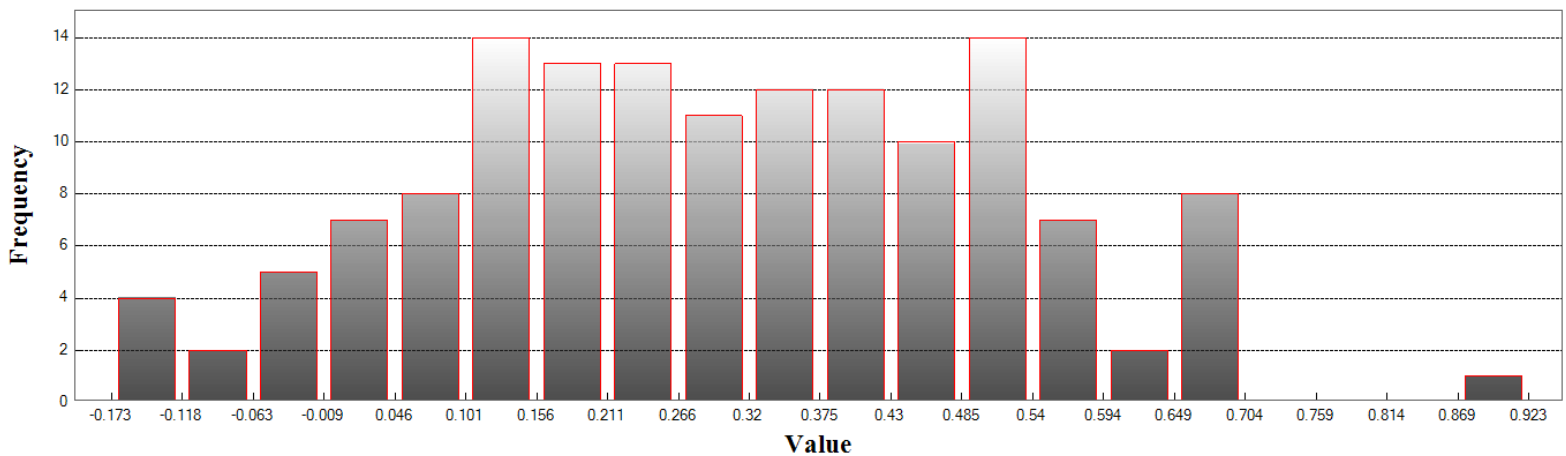
Min: -0.173
 Max: 0.488
 Number Of Bins: 20
 Bin Interval: 0.033

LAS (Continued)

Consolidated Vertical Accuracy

LandCover Type: ALL
 Minimum DZ: -0.173
 Maximum DZ: 0.924
 Mean DZ: 0.298
 Mean Magnitude DZ: 0.558
 Number Observations: 143
 Standard Deviation DZ: 0.216
 RMSE Z: 0.368
 95th Percentile: 0.664
 Units: US Survey Feet

Histogram



Min: -0.173
 Max: 0.924
 Number Of Bins: 20
 Bin Interval: 0.055