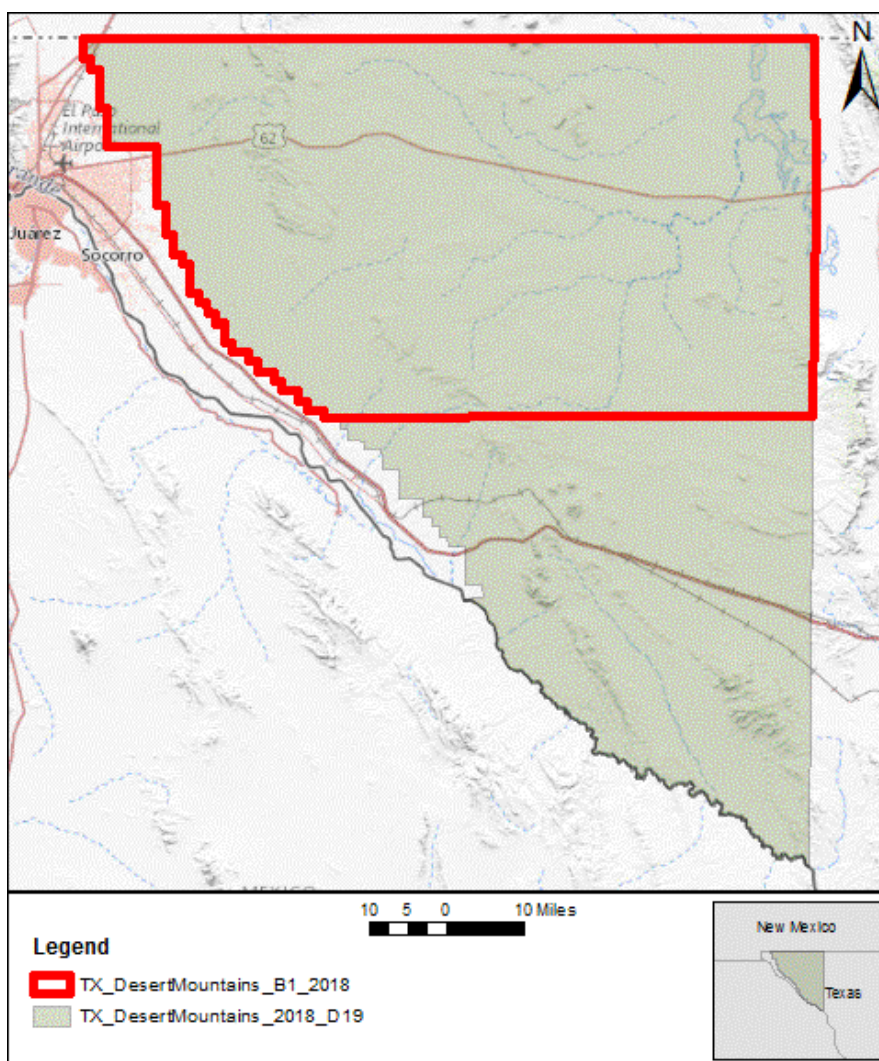


LIDAR Quality Report

from the National Geospatial Technical Operations Center
in Support of the 3D Elevation Program

TX_DesertMountains_2018_D19

2020-06-25



The USGS - National Geospatial Technical Operations Center (NGTOC), Data Operations Branch is responsible for conducting reviews of all enhanced, high-quality resolution elevation data and derived products delivered by a data supplier before it is approved for inclusion in the 3D Elevation Program (3DEP) data holdings. The USGS - NGTOC recognizes the complexity of high quality resolution elevation data collection and processing performed by the data suppliers and has developed this Quality Control (QC) procedure. The goal of this process is to assure elevation data are of sufficient quality for database population and scientific analysis. Concerns regarding the assessment of these data should be directed to the Chief of Data Operations Branch, 1400 Independence Road, Rolla, Missouri 65401.

Based on this review, the delivered data **MEETS WITH VARIANCE** to the 3D Elevation Program requirements.

Project Information

WP Name: TX_DesertMountains_2018_D19	Work Package ID: 182399
WU Name: TX_DesertMountains_B1_2018	Work Unit ID: 182396
Horizontal SRS: NAD83(2011) / UTM zone 13N	Vertical SRS: NAVD88 height
Mechanism: GPSC	Lidar Base Spec: 1.3
USGS Project POC: Robert Haselwander	POC Email: rhaselwander@usgs.gov
Vertical Accuracy: Review is expected to meet but awaiting final vertical accuracy assessment.	

Product	Accepted	Delivered	Summary of Errors
Classified Pointcloud	Yes	Yes	- Bridge: A bridge is classified as ground in the DEM (Resolved). - Overlap: LPC tile 13RDQ135735 has overlap points (Resolved).
DEM	Yes	Yes	- There are systematic gaps and overlaps along the edges of the DEM (except for the bottom). (Resolved)
Hydroflattened Polygon Breaklines	Yes	Yes	None
Bridge Point Breaklines	Yes	Yes	None
Classified LPC XML	Yes	Yes	None
Breakline/Hydro XML	Yes	Yes	None
Intensity Imagery XML	Yes	Yes	None
Project Level XML	Yes	Yes	None
DEM XML	Yes	Yes	None
Contractor Project Report	Yes	Yes	None
Contractor Collection Report	Yes	Yes	None
Contractor Processing Report	Yes	Yes	None
Contractor Survey Report	Yes	Yes	None
Tile Index	No	Yes	Tile index needs to be clipped to the work package boundary before delivery
Checkpoints	Yes	Yes	None
Defined Project Area	Yes	Yes	None

Product	Accepted	Delivered	Summary of Errors
Flightline Index	Yes	Yes	None
Intensity Imagery	Yes	Yes	None

Classified Lidar Point Cloud

Based on this review, the USGS-NGTOC **ACCEPTS** the Classified Lidar Point Cloud.

Digital Elevation Model (DEM)

Based on this review, the USGS-NGTOC **ACCEPTS** the Digital Elevation Model (DEM).

Breaklines

Based on this review, the USGS-NGTOC **ACCEPTS** the Breaklines.

Metadata

Based on this review, the USGS-NGTOC **ACCEPTS** the Metadata.

Shapefiles and/or Reports

Based on this review, the USGS-NGTOC **DOES NOT ACCEPT** the Shapefiles and/or Reports.

Deliverable	Error Type	Subtype	Quantity	Examples
Tile Index	Geometry Error	Area	1	Figure 1
Error Comment(s): Tile Index needs to be clipped to work package boundary before delivery				

Other Deliverables

Based on this review, the USGS-NGTOC **ACCEPTS** the Other Deliverables.

Other Deliverables additional comments:

USGS is requesting Swath Difference Images (DZ orthos)

Reports and Shapefiles

Error Type: Geometry Error, Error Subtype: Area

Figure 1

