



Accuracy Report - LiDAR

TX_Hurricane_2018_D18_Supplemental | Texas

Block 5

G17PC00015 | March 20, 2020

Version 01

Prepared for: USGS



Document Control

Document Information

Project Title	USGS Disaster Response Harvey Lidar 2018
Document Title	Accuracy Report - LiDAR
Fugro Project No.	33780084
Fugro Document No.	G17PC00015
Issue Number	140G0218F0391
Issue Status	Version 01

Client Information

Client	Prepared for: USGS
Client Address	1400 Independence Road, Rolla, MO 65401
Client Contact	Leslie Lansbery, Brent Marz

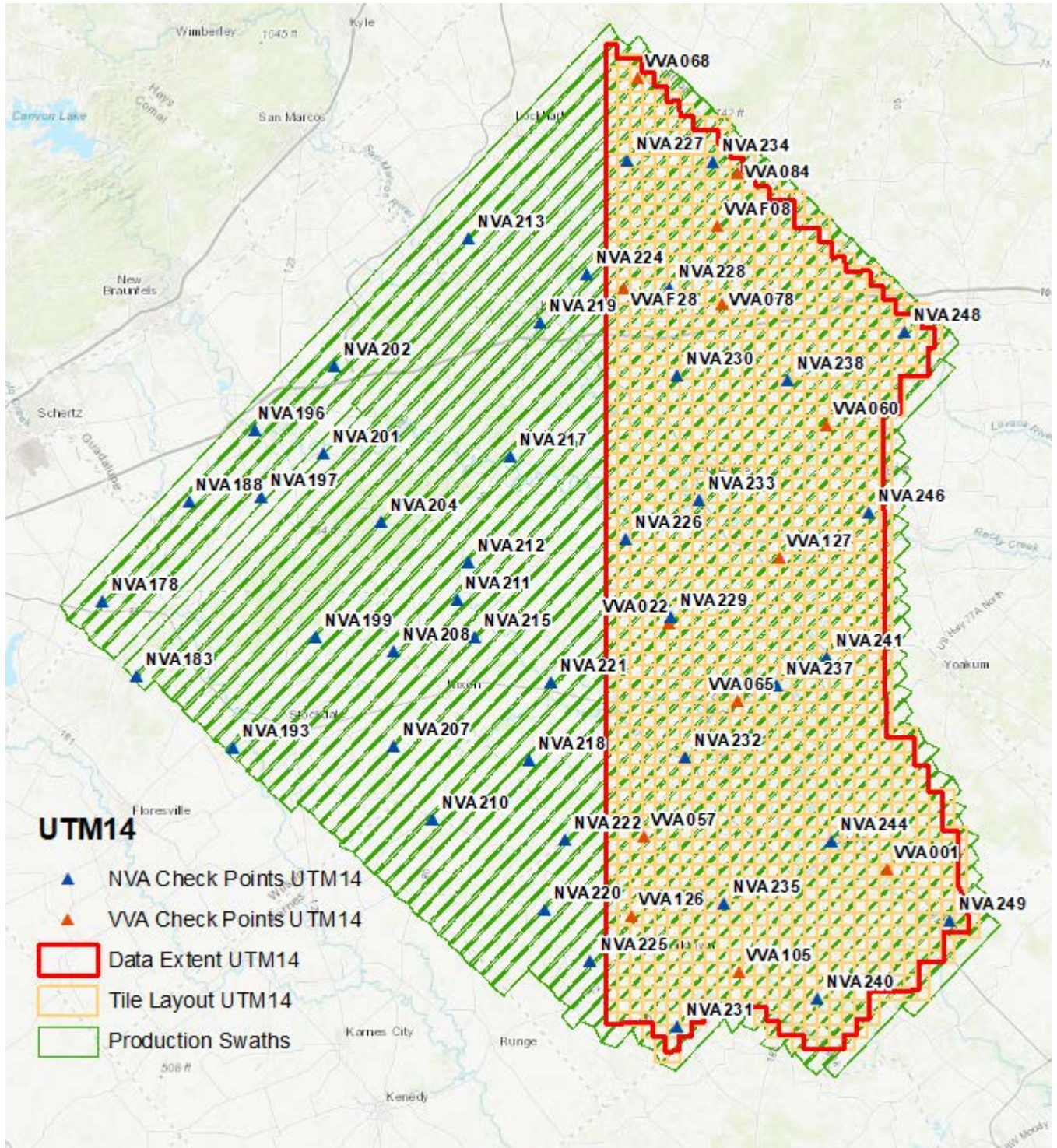
Revision History

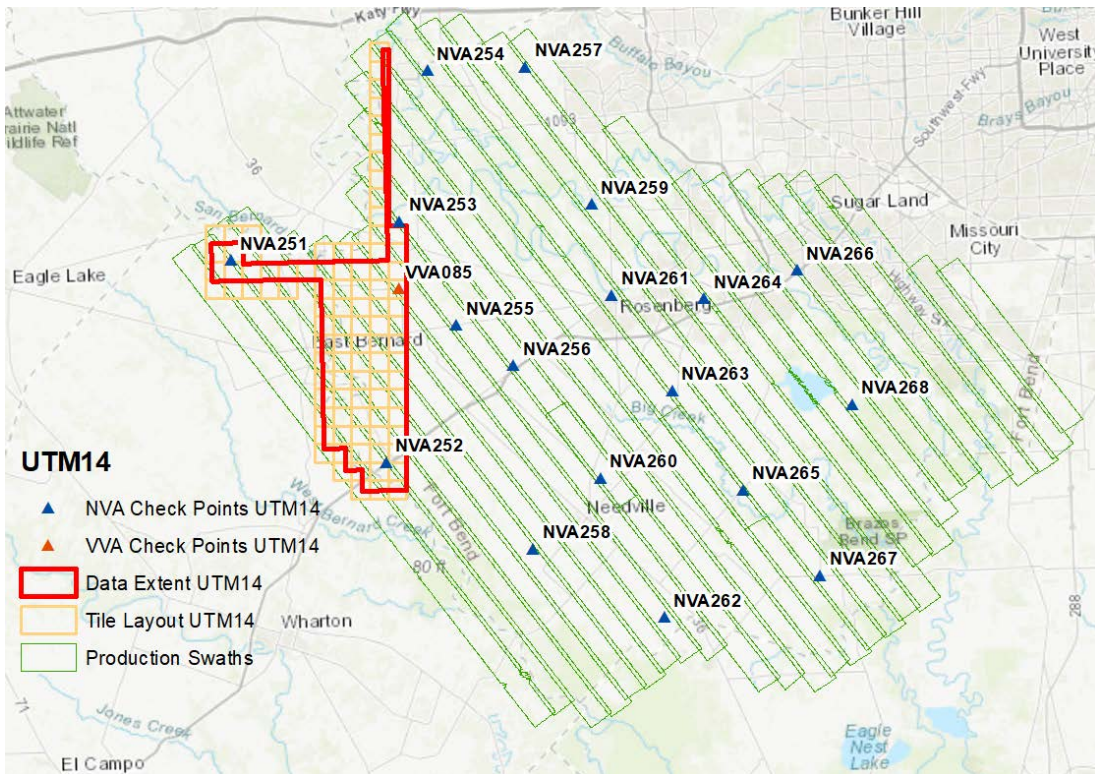
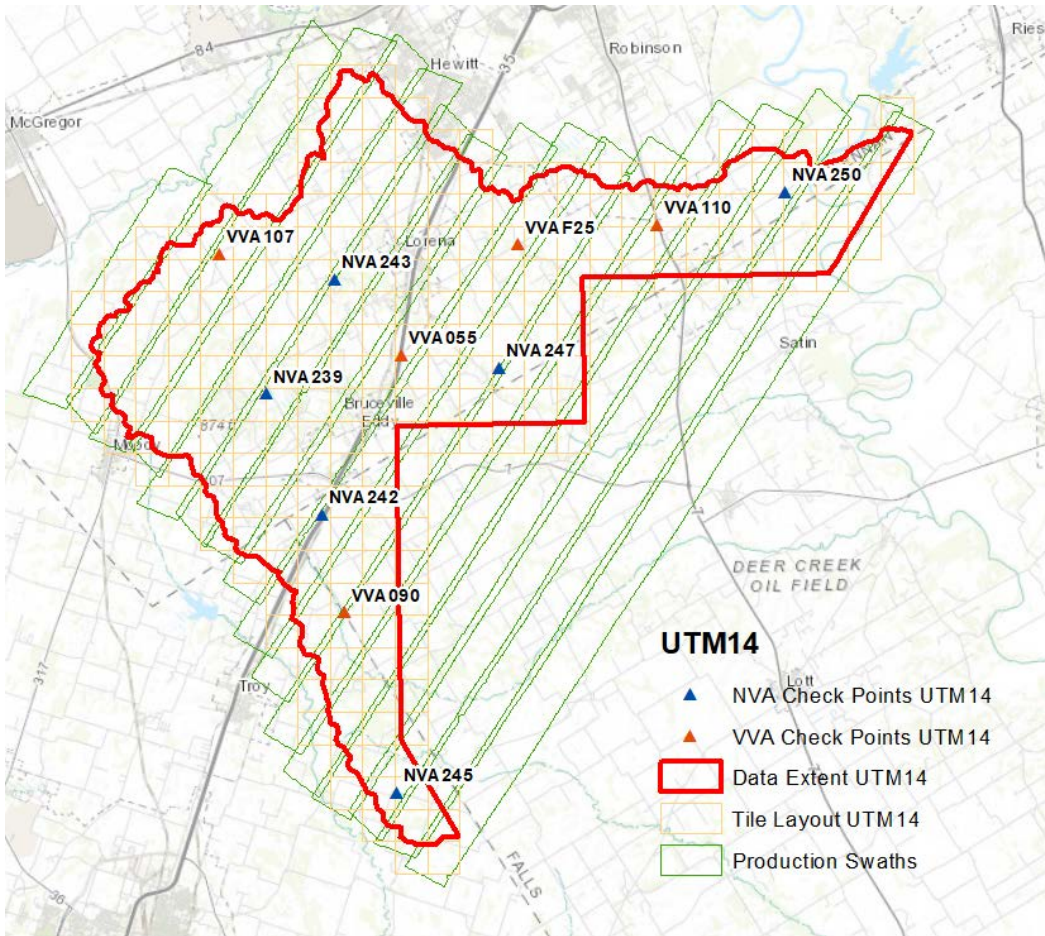
Issue	Date	Status	Comments on Content	Prepared By	Reviewed By
01	date	For Review	Awaiting client comments	JH/JW	KS

Project Team

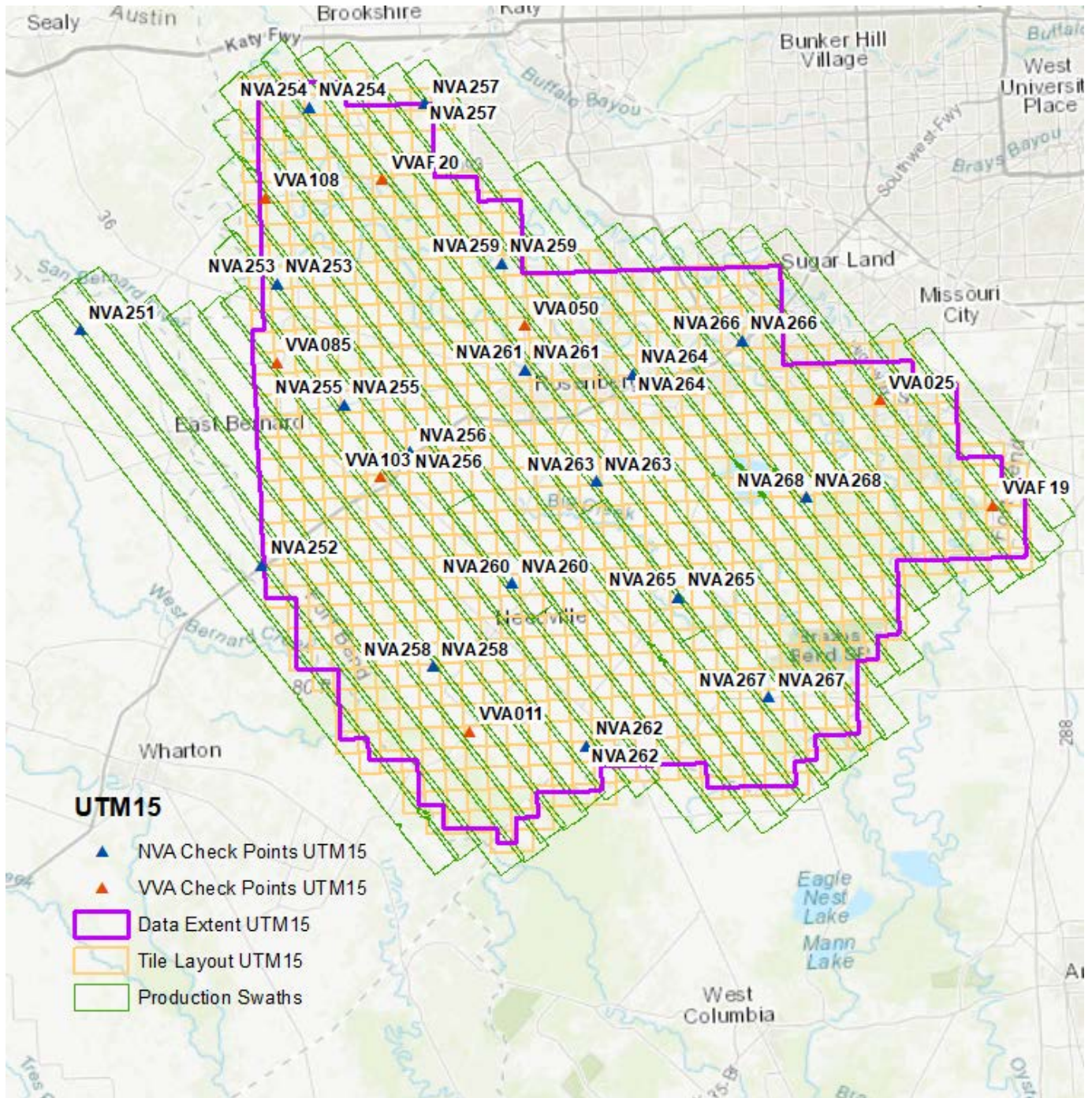
Initials	Name	Role
KS	Katie Springman	Project Manager
JW	Jaroslava Waters	Terrain Department Supervisor
JH	Jonathan Helta	Technical Lead

TX Harvey Block 5 UTM14 – LiDAR Check Points





TX Harvey Block 5 UTM15 – LiDAR Check Points



1. Accuracy reporting

Data collected under this Task Order meets the National Standard for Spatial Database Accuracy (NSSDA) accuracy standards. The NSSDA standards specify that vertical accuracy be reported at the 95 percent confidence level for data tested by an independent source of higher accuracy.

1.1 Positional Accuracy

Before classification and development of derivative products from the point cloud, the absolute and relative vertical accuracies of the point cloud were verified.

1.2 Absolute Vertical Accuracy

Unclassified Lidar Point Cloud Data: The Non-Vegetated Vertical Accuracy (NVA) of the Lidar Point Cloud data was calculated against TINs derived from the final calibrated and controlled swath data. The required accuracy (ACCZ) is: 19.6 cm at a 95% confidence level, derived according to NSSDA, i.e., based on RMSEZ of 10 cm in the "open terrain" and/or "Urban" land cover categories. This is a required accuracy. Please refer to the table below for the achieved accuracies. The raw swath point cloud data met the required accuracy levels before point cloud classification and derivative product generation.

Table 1: Accuracy of the Lidar Point Cloud Data (check points against swaths covering Block 5)

Raw Flight Lines	RMSEz (non-vegetated)	NVA at 95-percent confidence level
Specification (cm)	≤ 10	≤ 19.6
Calculated Values (cm)	5.6	10.9
Specification (m)	≤ 0.100	≤ 0.196
Calculated Values (m)	0.056	0.109
Number of points	68	68

Bare Earth Surface: The accuracy (ACCZ) of the derived DEM was calculated and is being reported in three (3) ways:

1. **RMSEZ (Non-Vegetated):** The required RMSEZ is ≤ 10 cm.
2. **Non-Vegetated Vertical Accuracy (NVA):** The required NVA is: ≤ 19.6 cm at a 95% confidence level, derived according to NSSDA, i.e., based on RMSEZ of 10 cm in the "open terrain" and/or "Urban" land cover categories. This is a required accuracy.
3. **Vegetated Vertical Accuracy (VVA):** The required VVA is: ≤ 29.4 cm at a 95th percentile level, derived according to ASPRS Guidelines, Vertical Accuracy for Reporting LiDAR Data, i.e. based on the 95th percentile error in Vegetated land cover categories combined (Tall Grass, Brush, Forested Areas). This is a required accuracy.

Please refer to the table below for the achieved accuracies.

Table 2: Accuracy of the Derived DEM (Block 5 - UTM14)

DEM	RMSEz (non-vegetated)	NVA at 95-percent confidence level	VVA at 95th percentiles
Specification (cm)	≤ 10	≤ 19.6	≤ 29.4
Calculated Values (cm)	3.8	7.4	25.2
Specification (m)	≤ 0.100	≤ 0.196	≤ 0.294
Calculated Values (m)	0.38	0.074	0.252
Number of points	27	27	19

Table 3: Accuracy of the Derived DEM (Block 5 - UTM15)

DEM	RMSEz (non-vegetated)	NVA at 95-percent confidence level	VVA at 95th percentiles
Specification (cm)	≤ 10	≤ 19.6	≤ 29.4
Calculated Values (cm)	3.5	6.8	20.1
Specification (m)	≤ 0.100	≤ 0.196	≤ 0.294
Calculated Values (m)	0.035	0.068	0.201
Number of points	16	16	9

1.3 Relative Accuracy

Smooth Surface Repeatability: In ideal theoretical conditions, smooth surface repeatability is a measure of variations documented on a surface that would be expected to be flat and without variation. Users of lidar technology commonly refer to these variations as “noise.” Single-swath data was assessed using only single returns in non-vegetated areas. Repeatability was evaluated by measuring departures from planarity of single returns from hard planar surfaces, normalizing for actual variation in the surface elevation. Repeatability of only single returns was then assessed at multiple locations within hard surfaced areas (for example, parking lots or large rooftops).

Each sample area was evaluated using a signed difference raster (maximum elevation – minimum elevation) at a cell size equal to twice the ANPS, rounded up to the next integer. Sample areas were larger than 50 square meters (m²). The maximum acceptable variations within sample areas for this project is 6 cm. Isolated noise is expected within the sample areas and was disregarded.

The evaluation was done on 42 flat open sample areas over the Block 5 AOI. For the full evaluation, refer to:

Harvey_B5_Relative_Accuracy_Smooth_Surface_Repeatability.shp

Overlap Consistency: Overlap consistency is a measure of geometric alignment of two overlapping swaths; the principles used with swaths can be applied to overlapping lifts and projects as well. Overlap consistency is the fundamental measure of the quality of the calibration or boresight adjustment of the data from each lift and is of particular importance as the match between the swaths of a single lift is a strong indicator of the overall geometric quality of the data, establishing the quality and accuracy limits of all downstream data and products.

Overlap consistency was assessed at multiple locations within overlap in non-vegetated areas of only single returns.

Each overlap area was evaluated using a signed difference raster with a cell size equal to twice the ANPS, rounded up to the next integer. The difference rasters are visually examined using a bicolored ramp from the negative acceptable limit to the positive acceptable limit. Although isolated excursions beyond the limits are expected and accepted, differences in the overlaps shall not exceed the following limits:

1. Swath overlap difference, $\text{RMSDz} \leq 8 \text{ cm}$
2. Swath overlap difference, maximum $\pm 16 \text{ cm}$

The difference rasters are also statistically summarized to verify that root mean square difference in z (RMSDz) values do not exceed the project specifications. Consideration will be given for the effect of the expected isolated excursions over limits.

The evaluation was done on 50 samples throughout the Block 5 AOI. For the full evaluation, refer to:

Harvey_B5_Relative_Accuracy_Flightline_Overlap.shp