

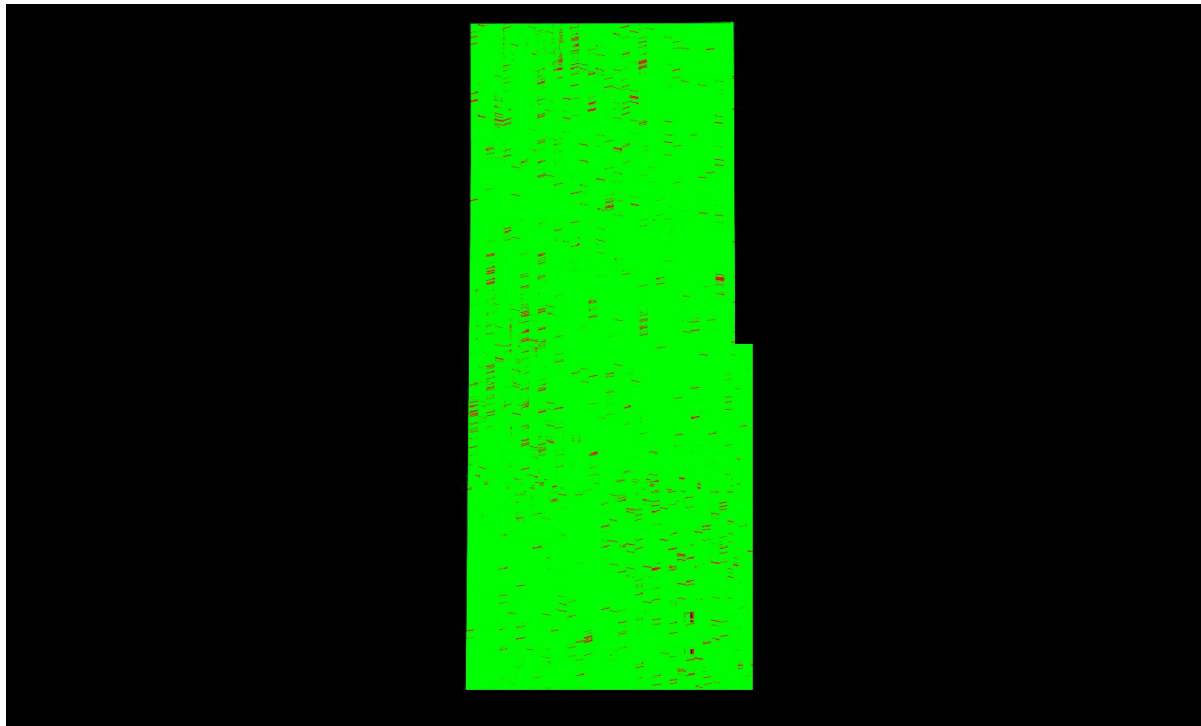
### C-4.2 Grid Based Test: Grid Cell = 10m x 10m, Required PPSM Tested Excluding Overlap Bit Flagged Points

QL2 selected

Required QL2 PPSM  $\geq 2$

First return point count computed using a cell size of 10m x 10m. The minimum required point per cell value is 100 times (10 x 10) that of the original specification (100 x 2 = 200) to scale the required point count up to the area of the inflated cell.

#### First Return Point Density Map



Color Description

**Green** Density greater than or equal to minimum specification of 200 points per cell  
**Red** Density less than minimum specification of 200 points per cell

Percentage of cells by color

0.00

100.00

Average first return density =  $0.00 / 100 = 0.00$  ppsm