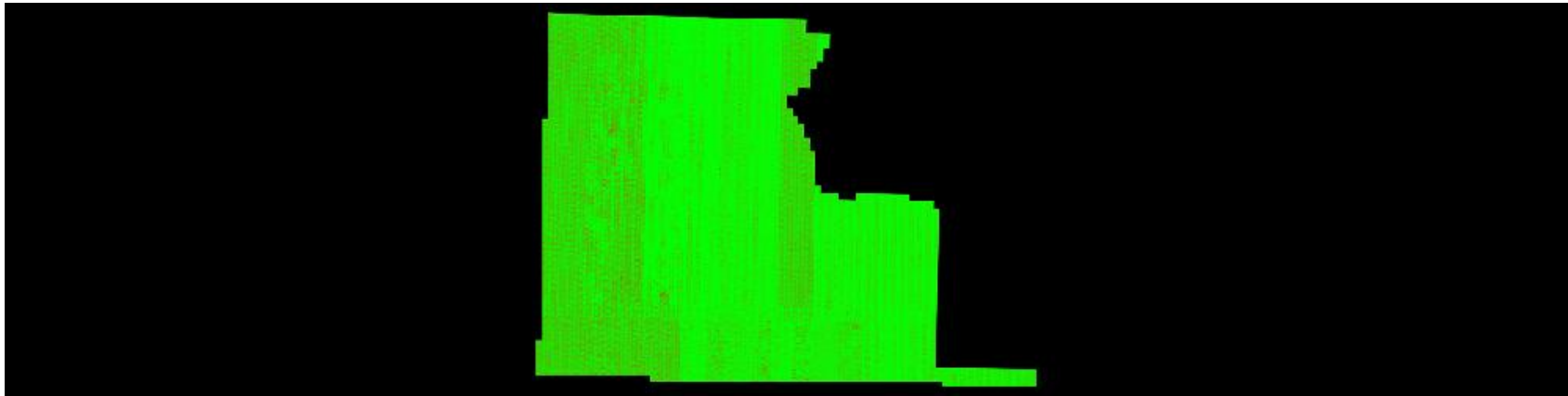


C-4.2 Grid Based Test: Grid Cell = 1m x 1m, Required PPSM Tested Excluding Overlap Bit Flagged Points

QL2 selected Required QL2 PPSM ≥ 2
First return point count computed using a cell size 1m x 1m

First Return Point Density Map



<u>Color</u>	<u>Description</u>
■	Density greater than or equal to minimum specification of 2 points per cell
■	Density less than minimum specification of 2 points per cell

Average first return density = 0.00 ppsm

<u>Percentage of cells by color</u>
0.00
100.00