

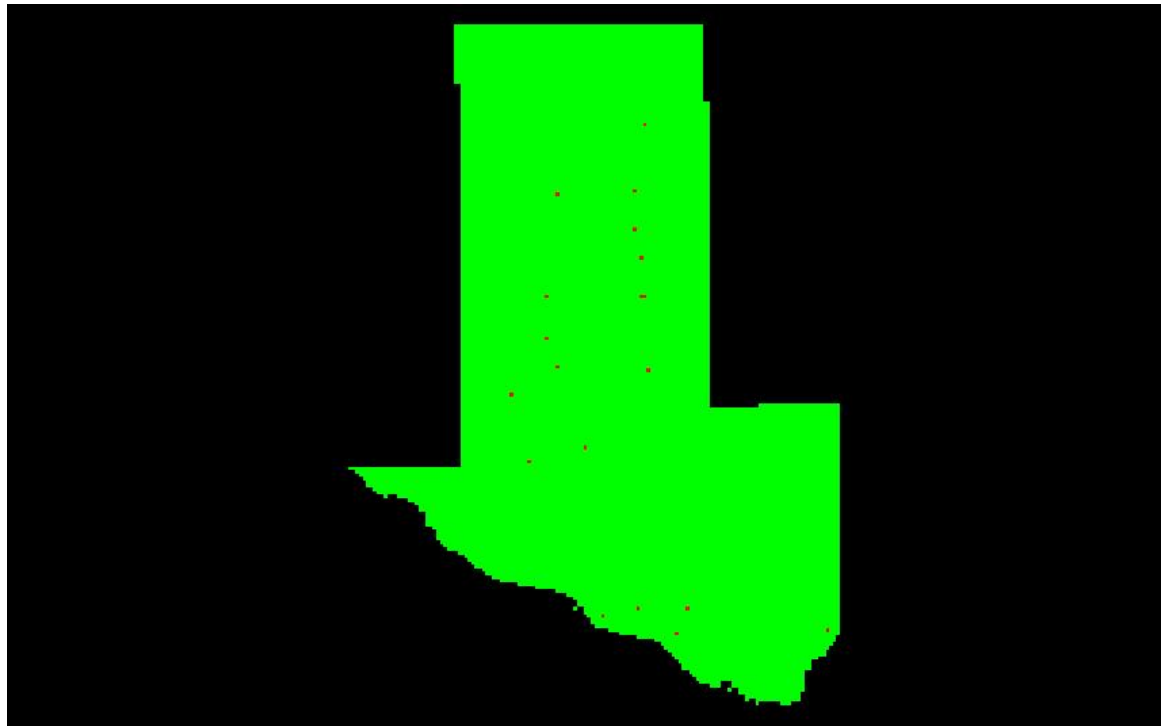
C-4.2 Grid Based Test: Grid Cell = 1,000m x 1,000m, Required PPSM Tested Excluding Overlap Bit Flagged Points

QL2 selected

Required QL2 PPSM ≥ 2

First return point count computed using a cell size of 1,000m x 1,000m. The minimum required point per cell value is 1,000,000 times (1,000 x 1,000) that of the original specification (1,000,000 x 2 = 2,000,000) to scale the required point count up to the area of the inflated cell.

First Return Point Density Map



Color Description

Green Density greater than or equal to minimum specification of 2,000,000 points per cell
Red Density less than minimum specification of 2,000,000 points per cell

Percentage of cells by color

99.88

0.12

Average first return density = $2586103.00 / 1,000,000 = 2.59$ ppsm