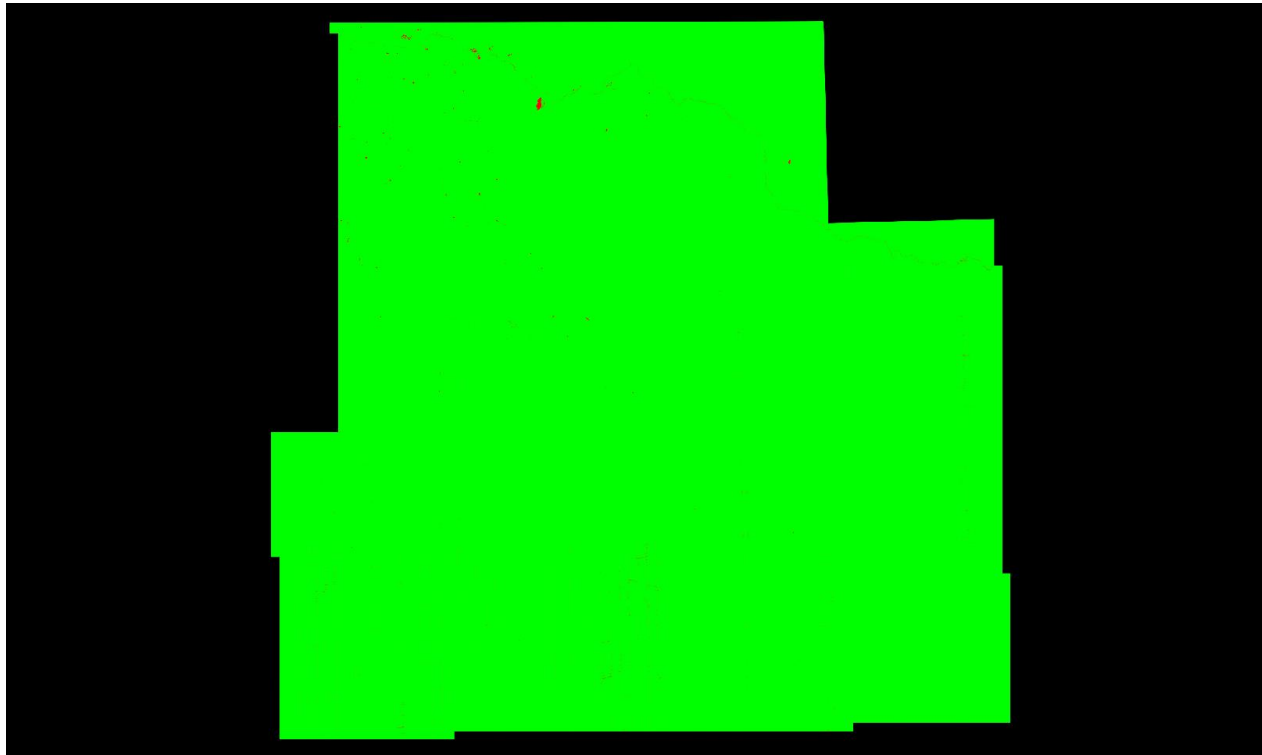


### *C-4.2 Grid Cell Size Based on Nyquist Sampling Criteria (2 x Required NPS) Excluding Overlap Bit Flagged Points*

QL2 selected                      Required QL2 NPS  $\leq$  0.71 meters  
First return point count computed using a cell size of 1.42 meters (2 x 0.71)

First Return Point Density Map



<u>Color</u>	<u>Description</u>	<u>Percentage of cells by color</u>
■	Density greater than or equal to minimum specification of 1 point per cell	99.91
■	Density less than minimum specification of 1 point per cell (0 points per cell)	0.09