

Classified Point Cloud

Deliverable 1 Summary

✓ General		
Folder:	E:\UtahLake\UtahLake_ClassifiedLAS_1point4	
Total # of Files:	409	(All Valid)
Total File Size:	88.8 GB	(95,381,739,596 bytes)

✓ Tile Sizes	
Median Tile Size:	1,000m x 1,000m
Minimum Tile Size:	0m x 0m
Maximum Tile Size:	1,000m x 1,000m
X Range:	419000.00m to 444999.99m
Y Range:	4420000.00m to 4469000.00m
Elevation Range:	1101.97m to 2226.59m

✓ LAS Version And Point Record Formats	
v1.4, Point Record Format 6	409 of 409 Tiles

✓ Spatial Reference System		
Horizontal Projection	NAD83(2011) / UTM zone 12N	409 of 409 Tiles
Horizontal Datum	NAD83 (National Spatial Reference System 2011)	409 of 409 Tiles
Horizontal Units	meter	409 of 409 Tiles
Vertical Datum	NAVD88 height	409 of 409 Tiles
Vertical Units	meter	409 of 409 Tiles
Storage Method	WKT	409 of 409 Tiles

✓ GPS Time Type	
Adjusted	409 of 409 Tiles

✓ File Source ID Equals 0	
Yes	409 of 409 Tiles

✓ VLR/EVLR Reserved Equals 0	
Yes	967 of 967 Records

✓ Unnecessary Bytes At End Of File	
No	409 of 409 Tiles

✓ Legacy Point Count Check	
Zero	409 of 409 Tiles

✓ System Identifier	
Quantum Spatial	409 of 409 Tiles

✓ Generating Software	
LiDAR Suite	409 of 409 Tiles

Classified Point Cloud Continued...

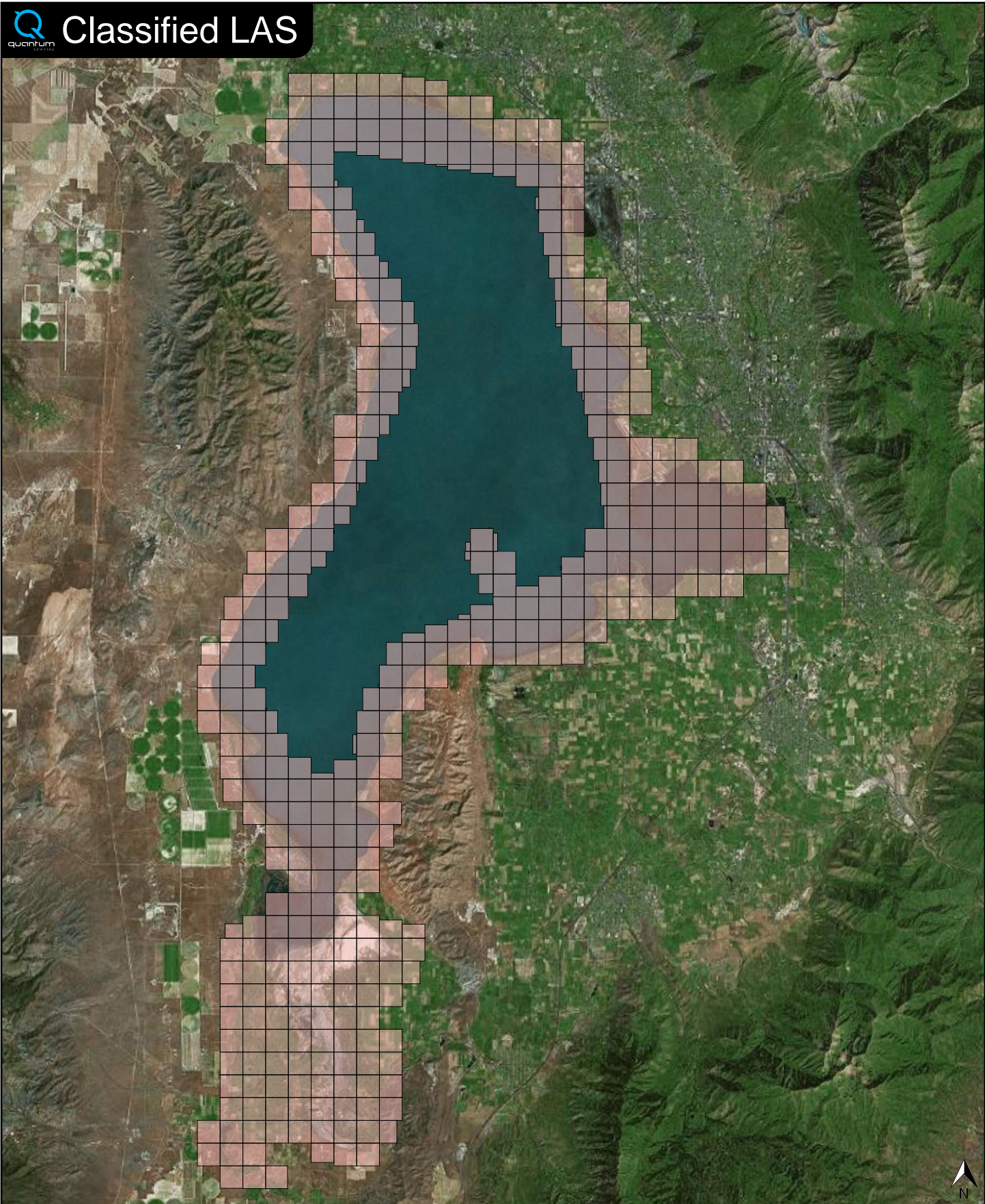
Deliverable 1 Summary

Point Classifications		
Class 1	21.25%	675,492,195 Points
Class 2	73.30%	2,330,444,360 Points
Class 7	0.01%	190,743 Points
Class 9	5.42%	172,323,080 Points
Class 10	0.03%	796,123 Points
Class 17	0.00%	15,968 Points
Class 18	0.00%	109,652 Points

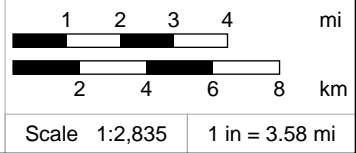
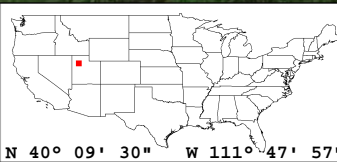
✓ Point Statistics	
Scan Angle:	-22 to 22
Intensity:	0 to 65535
First Date:	10/26/2016 3:54:11 PM
Last Date:	11/18/2016 10:51:15 PM



Classified LAS



Classified LAS Tiles (409)



Raw LAS Flight Line Strips

Deliverable 2 Summary

✓ General		
Folder:	E:\UtahLake\UtahLake_Calibrated_Swath_1point4	
Total # of Files:	105	(All Valid)
Total File Size:	94.2 GB	(101,143,597,908 bytes)
✓ Raw LAS Strips		
Elevation Range:	1089m to 2252m	
✓ LAS Version And Point Record Formats		
v1.4, Point Record Format 6		105 of 105 Strips
✓ Spatial Reference System		
Horizontal Projection	NAD83(2011) / UTM zone 12N	105 of 105 Strips
Horizontal Datum	NAD83 (National Spatial Reference System 2011)	105 of 105 Strips
Horizontal Units	meter	105 of 105 Strips
Vertical Datum	NAVD88 height	105 of 105 Strips
Vertical Units	meter	105 of 105 Strips
Storage Method	WKT	105 of 105 Strips
✓ GPS Time Type		
Adjusted		105 of 105 Strips
✓ File Source IDs		
Equals Zero:	None	
All Unique:	Yes	
FLs:	1422 - 1440, 1442 - 1502, 1504 - 1505, 1507 - 1512, 1571, 1573 - 1576, 1578, 1580, 9149, 9151 - 9156, 9158 - 9159, 9904	
✓ VLR/EVLR Reserved Equals 0		
Yes		269 of 269 Records
✓ Unnecessary Bytes At End Of File		
No		105 of 105 Strips
✓ Legacy Point Count Check		
Zero		105 of 105 Strips
✓ System Identifier		
Quantum Spatial		105 of 105 Strips
✓ Generating Software		
LiDAR Suite		105 of 105 Strips

✓ General		
Folder:	E:\UtahLake\ERDAS_IMG_Raster_DEM	
Total # of Files:	163	(All Valid)
Total File Size:	7.8 GB	(8,350,892,006 bytes)

✓ Tile Sizes		
Median Tile Size:	2,000m x 2,000m	
Minimum Tile Size:	32m x 89m	
Maximum Tile Size:	2,000m x 2,000m	
X Range:	419376.00m to 444934.50m	
Y Range:	4420345.50m to 4468780.00m	
Elevation Range:	0.00m to 1565.86m	

✓ Spatial Reference System		
Horizontal Projection	NAD_1983_2011_UTM_Zone_12N	163 of 163 Tiles
Horizontal Datum	D_NAD_1983_2011	163 of 163 Tiles
Horizontal Units	Meter	163 of 163 Tiles
Vertical Datum	NAVD88 height	163 of 163 Tiles
Vertical Units	Meter	163 of 163 Tiles

✓ Raster		
File Type:	IMG	163 of 163
Bands:	1	163 of 163
Grid Size (pixels):	4000 x 4000	98 of 163
	OTHER	65 of 163
Pixel Resolution:	0.50000000m x 0.50000000m	163 of 163
Pixel Type:	32-bit Floating Point	163 of 163
Compression:	None	163 of 163
No Data Value:	-32767	163 of 163

