

Classified Point Cloud

Deliverable 1 Summary

✓ General		
Folder:	E:\GreatSaltLake\GSL_ClassifiedLAS_1point4	
Total # of Files:	4,878	(All Valid)
Total File Size:	795.2 GB	(853,848,314,448 bytes)

✓ Tile Sizes		
Median Tile Size:	1,000m x 1,000m	
Minimum Tile Size:	0m x 0m	
Maximum Tile Size:	1,000m x 1,000m	
X Range:	323000.00m to 425000.00m	
Y Range:	4500000.00m to 4626000.00m	
Elevation Range:	-21474836.48m to 2763.09m	

✓ LAS Version And Point Record Formats		
v1.4, Point Record Format 6	4,878 of 4,878 Tiles	

✓ Spatial Reference System		
Horizontal Projection	NAD83(2011) / UTM zone 12N	4,878 of 4,878 Tiles
Horizontal Datum	NAD83 (National Spatial Reference System 2011)	4,878 of 4,878 Tiles
Horizontal Units	meter	4,878 of 4,878 Tiles
Vertical Datum	NAVD88 height	4,878 of 4,878 Tiles
Vertical Units	meter	4,878 of 4,878 Tiles
Storage Method	WKT	4,878 of 4,878 Tiles

✓ GPS Time Type		
Adjusted	4,878 of 4,878 Tiles	

✓ File Source ID Equals 0		
Yes	4,878 of 4,878 Tiles	

✓ VLR/EVLR Reserved Equals 0		
Yes	13,132 of 13,132 Records	

✓ Unnecessary Bytes At End Of File		
No	4,878 of 4,878 Tiles	

✓ Legacy Point Count Check		
Zero	4,878 of 4,878 Tiles	

✓ System Identifier		
Quantum Spatial	4,878 of 4,878 Tiles	

✓ Generating Software		
LiDAR Suite	4,878 of 4,878 Tiles	

Classified Point Cloud Continued...

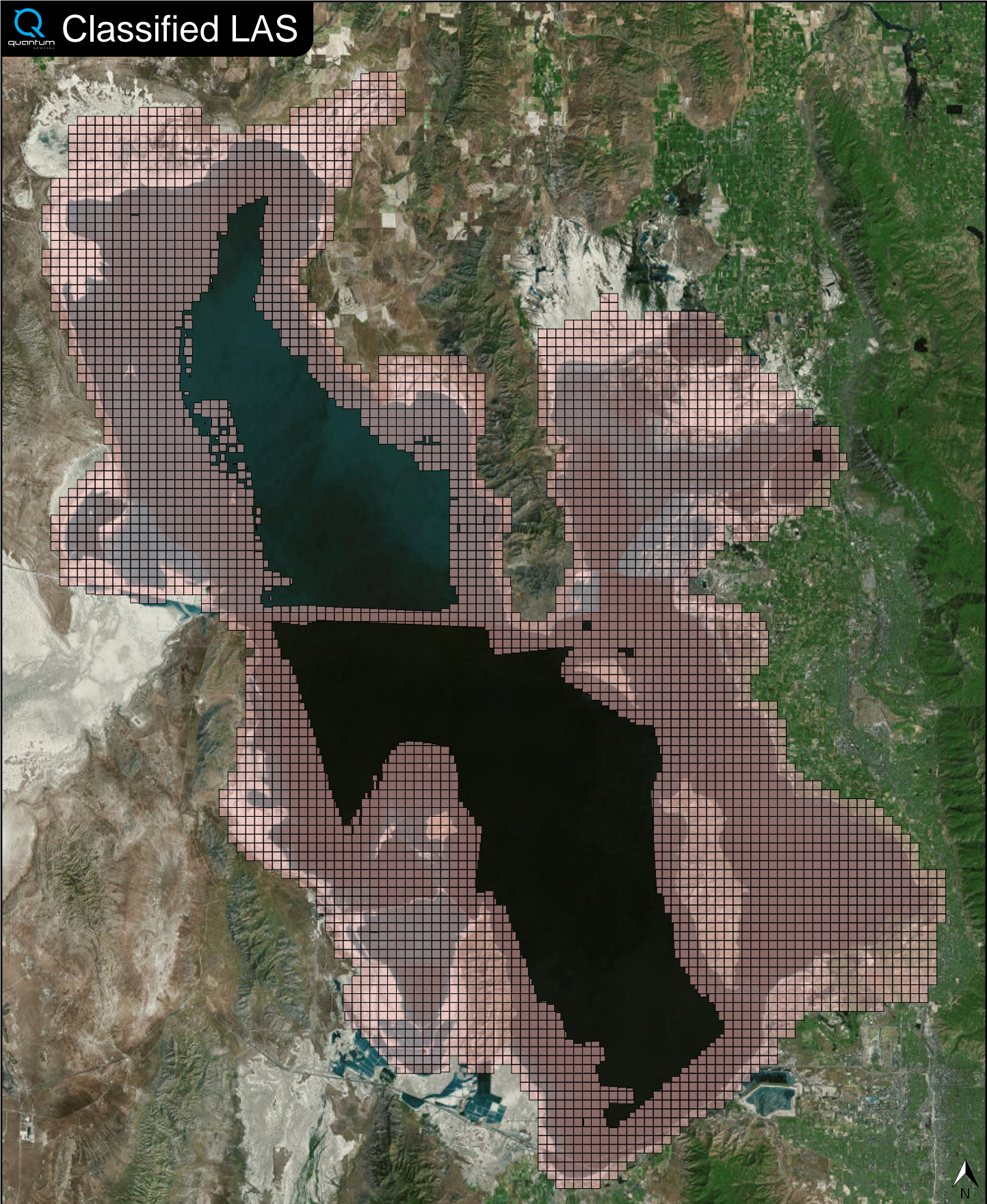
Deliverable 1 Summary

Point Classifications		
Class 1	16.98%	4,832,358,493 Points
Class 2	79.75%	22,697,317,688 Points
Class 7	0.01%	2,683,859 Points
Class 9	3.20%	911,256,840 Points
Class 10	0.04%	11,161,500 Points
Class 17	0.00%	1,940 Points
Class 18	0.02%	6,597,346 Points

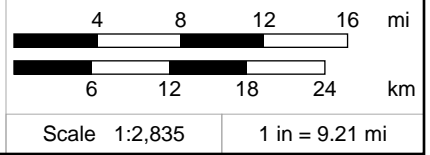
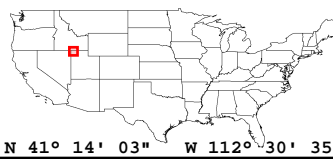
✓ Point Statistics	
Scan Angle:	-49 to 27
Intensity:	0 to 65535
First Date:	9/14/2011 1:46:40 AM
Last Date:	11/07/2016 1:35:21 AM



Classified LAS



Classified LAS Tiles (4,878)



Raw LAS Flight Line Strips

Deliverable 2 Summary

✓ General		
Folder:	E:\GreatSaltLake\GSL_Calibrated_Swath_1point4	
Total # of Files:	656	(All Valid)
Total File Size:	793.2 GB	(851,662,128,680 bytes)
✓ Raw LAS Strips		
Elevation Range:	-21474836m to 2763m	
✓ LAS Version And Point Record Formats		
v1.4, Point Record Format 6	656 of 656 Strips	
✓ Spatial Reference System		
Horizontal Projection	NAD83(2011) / UTM zone 12N	656 of 656 Strips
Horizontal Datum	NAD83 (National Spatial Reference System 2011)	656 of 656 Strips
Horizontal Units	meter	656 of 656 Strips
Vertical Datum	NAVD88 height	656 of 656 Strips
Vertical Units	meter	656 of 656 Strips
Storage Method	WKT	656 of 656 Strips
✓ GPS Time Type		
Adjusted	656 of 656 Strips	
✓ File Source IDs		
Equals Zero:	None	
All Unique:	Yes	
FLs:	1001 - 1039, 1043 - 1089, 1091 - 1200, 1214 - 1219, 1226 - 1227, 1230 - 1233, 1235 - 1251, 1259 - 1269, 1278 - 1282, 1284 - 1302, 1305 - 1310, 1312 - 1327, 1331 - 1357, 1359 - 1377, 1381 - 1421, 1513 - 1561, 2001 - 2056, 2058 - 2069, 2071 - 2072, 2074 - 2075, 2078 - 2109, 2111 - 2200, 2202 - 2205, 2207 - 2208, 2212 - 2234, 2236 - 2240, 3000 - 3005, 3008 - 3011	
✓ VLR/EVLR Reserved Equals 0		
Yes	1,816 of 1,816 Records	
✓ Unnecessary Bytes At End Of File		
No	656 of 656 Strips	
✓ Legacy Point Count Check		
Zero	656 of 656 Strips	
✓ System Identifier		
Quantum Spatial	656 of 656 Strips	
✓ Generating Software		
LiDAR Suite	656 of 656 Strips	

✓ General		
Folder:	E:\GreatSaltLake\ERDAS_IMG_Raster_DSM_QL2	
Total # of Files:	1,252	(All Valid)
Total File Size:	16.2 GB	(17,401,749,996 bytes)

✓ Tile Sizes	
Median Tile Size:	2,000m x 2,000m
Minimum Tile Size:	4m x 16m
Maximum Tile Size:	2,001m x 2,000m
X Range:	323822.00m to 424935.00m
Y Range:	4500557.00m to 4625016.00m
Elevation Range:	0.00m to 2028.05m

✓ Spatial Reference System		
Horizontal Projection	NAD_1983_2011_UTM_Zone_12N	1,252 of 1,252 Tiles
Horizontal Datum	D_NAD_1983_2011	1,252 of 1,252 Tiles
Horizontal Units	Meter	1,252 of 1,252 Tiles
Vertical Datum	NAVD88 height	1,252 of 1,252 Tiles
Vertical Units	Meter	1,252 of 1,252 Tiles

✓ Raster		
File Type:	IMG	1,252 of 1,252
Bands:	1	1,252 of 1,252
Grid Size (pixels):	2000 x 2000	865 of 1,252
	OTHER	387 of 1,252
Pixel Resolution:	1.000000000m x 1.000000000m	1,252 of 1,252
Pixel Type:	32-bit Floating Point	1,252 of 1,252
Compression:	None	1,252 of 1,252
No Data Value:	-32767	1,252 of 1,252

