

Classified Point Cloud

Deliverable 1 Summary

✓ General		
Folder:	F:\Forge_Area_v1point4	
Total # of Files:	567	(All Valid)
Total File Size:	203.1 GB	(218,117,997,720 bytes)

✓ Tile Sizes	
Median Tile Size:	1,000m x 1,000m
Minimum Tile Size:	1,000m x 1,000m
Maximum Tile Size:	1,000m x 1,000m
X Range:	322000.00m to 342999.99m
Y Range:	4248000.01m to 4275000.00m
Elevation Range:	1219.25m to 3059.38m

✓ LAS Version And Point Record Formats	
v1.4, Point Record Format 6	567 of 567 Tiles

✓ Spatial Reference System		
Horizontal Projection	NAD83(2011) / UTM zone 12N	567 of 567 Tiles
Horizontal Datum	NAD83 (National Spatial Reference System 2011)	567 of 567 Tiles
Horizontal Units	meter	567 of 567 Tiles
Vertical Datum	NAVD88 height	567 of 567 Tiles
Vertical Units	meter	567 of 567 Tiles
Storage Method	WKT	567 of 567 Tiles

✓ GPS Time Type	
Adjusted	567 of 567 Tiles

✓ File Source ID Equals 0	
Yes	567 of 567 Tiles

✓ VLR/EVLR Reserved Equals 0	
Yes	567 of 567 Records

✓ Unnecessary Bytes At End Of File	
No	567 of 567 Tiles

✓ Legacy Point Count Check	
Zero	567 of 567 Tiles

✓ System Identifier	
Quantum Spatial	567 of 567 Tiles

✓ Generating Software	
LiDAR Suite	567 of 567 Tiles

Classified Point Cloud Continued...

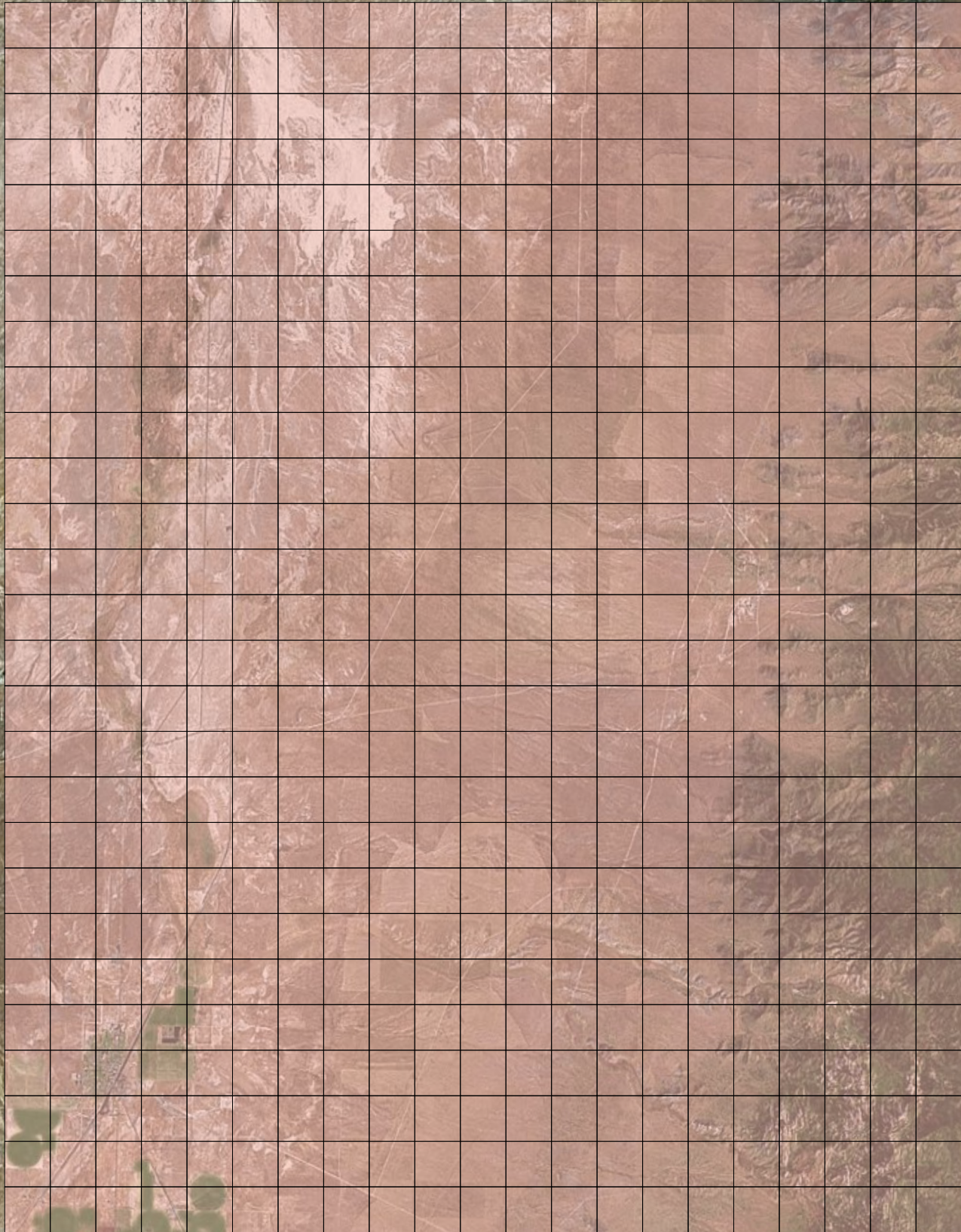
Deliverable 1 Summary

Point Classifications		
Class 1	21.47%	1,561,112,521 Points
Class 2	78.44%	5,702,916,250 Points
Class 7	0.09%	6,294,042 Points
Class 9	0.00%	226,884 Points
Class 10	0.00%	5,642 Points
Class 17	0.00%	13,473 Points
Class 18	0.00%	6,353 Points

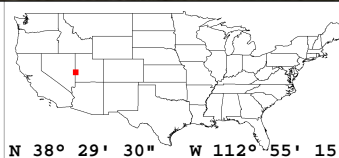
✓ Point Statistics	
Scan Angle:	-24 to 25
Intensity:	0 to 65535
First Date:	10/26/2016 2:36:02 PM
Last Date:	11/03/2016 5:51:48 PM



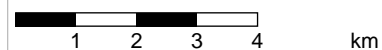
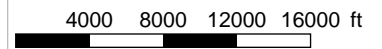
Classified LAS



Classified LAS Tiles (567)



N 38° 29' 30" W 112° 55' 15"



Scale 1:2,835 1 in = 10419.95 ft



Raw LAS Flight Line Strips

Deliverable 2 Summary

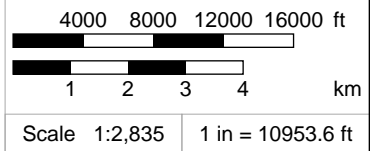
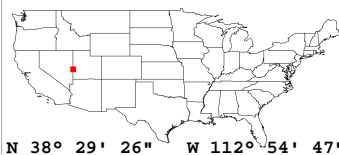
✓ General		
Folder:	F:\Forge_Assembled_FL_1point4	
Total # of Files:	84	(All Valid)
Total File Size:	216.1 GB	(232,041,838,986 bytes)
✓ Raw LAS Strips		
Elevation Range:	1179m to 3059m	
✓ LAS Version And Point Record Formats		
v1.4, Point Record Format 6	84 of 84 Strips	
✓ Spatial Reference System		
Horizontal Projection	NAD83(2011) / UTM zone 12N	84 of 84 Strips
Horizontal Datum	NAD83 (National Spatial Reference System 2011)	84 of 84 Strips
Horizontal Units	meter	84 of 84 Strips
Vertical Datum	NAVD88 height	84 of 84 Strips
Vertical Units	meter	84 of 84 Strips
Storage Method	WKT	84 of 84 Strips
✓ GPS Time Type		
Adjusted	84 of 84 Strips	
✓ File Source IDs		
Equals Zero:	None	
All Unique:	Yes	
FLs:	4001, 4003, 4005, 4007, 4010, 4012 - 4053, 4059 - 4072, 4077 - 4079, 4081 - 4090, 4099, 9401 - 9409	
✓ VLR/EVLR Reserved Equals 0		
Yes	102 of 102 Records	
✓ Unnecessary Bytes At End Of File		
No	84 of 84 Strips	
✓ Legacy Point Count Check		
Zero	84 of 84 Strips	
✓ System Identifier		
Quantum Spatial	84 of 84 Strips	
✓ Generating Software		
LiDAR Suite	84 of 84 Strips	



Raw LAS Strips



FL Strips (84)

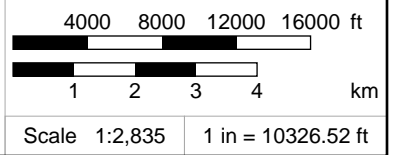
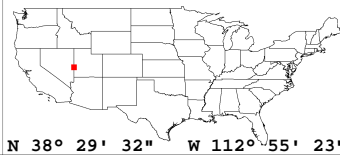
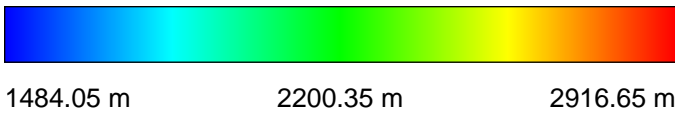
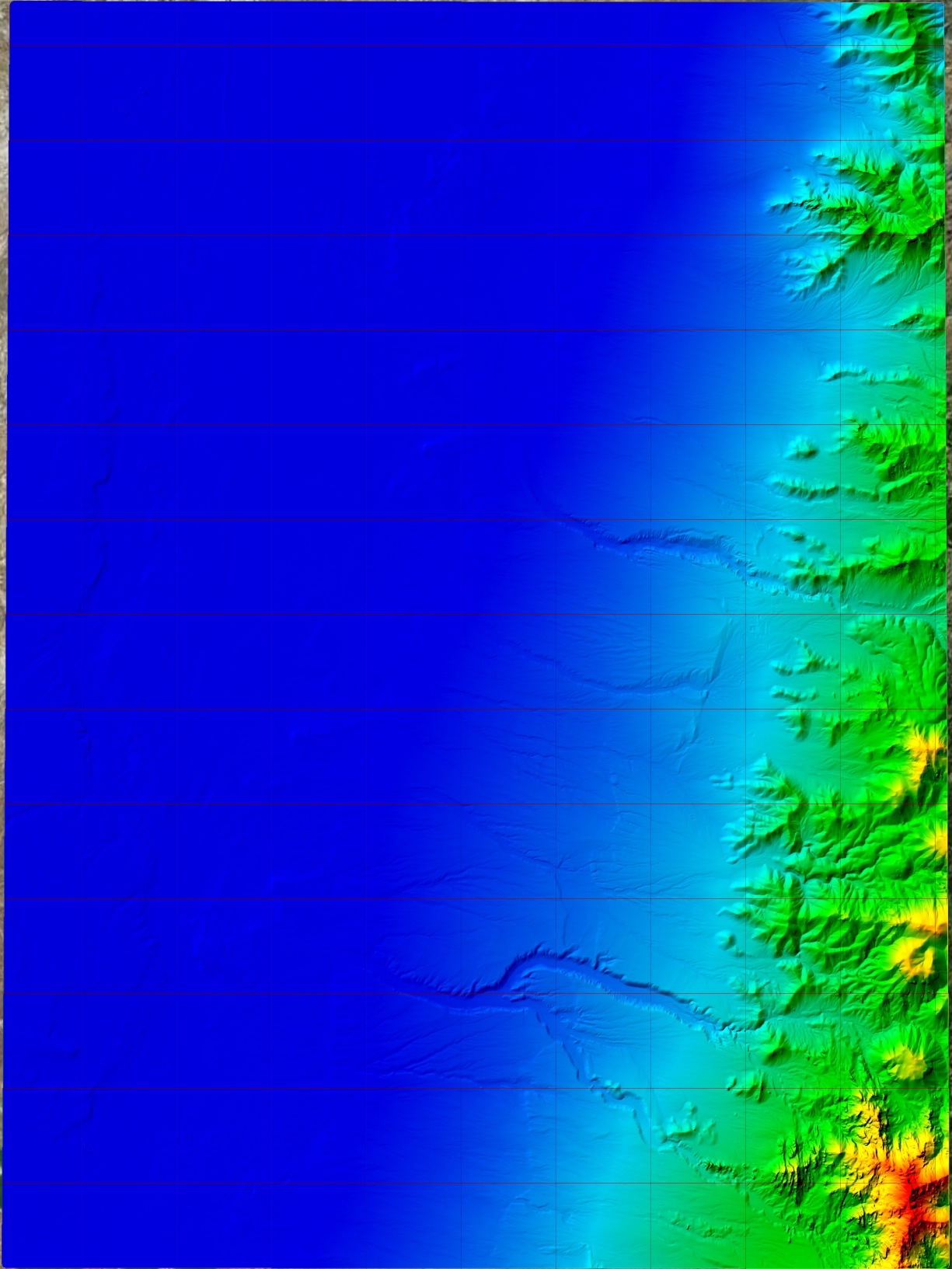


✓ General		
Folder:	F:\DEM	
Total # of Files:	154	(All Valid)
Total File Size:	8.1 GB	(8,650,700,669 bytes)

✓ Tile Sizes	
Median Tile Size:	2,000m x 2,000m
Minimum Tile Size:	191m x 911m
Maximum Tile Size:	2,000m x 2,000m
X Range:	322310.52m to 342298.50m
Y Range:	4248180.10m to 4274938.00m
Elevation Range:	1483.99m to 2921.44m

✓ Spatial Reference System		
Horizontal Projection	NAD_1983_2011_UTM_Zone_12N	154 of 154 Tiles
Horizontal Datum	D_NAD_1983_2011	154 of 154 Tiles
Horizontal Units	Meter	154 of 154 Tiles
Vertical Datum	NAVD88 height	154 of 154 Tiles
Vertical Units	Meter	154 of 154 Tiles

✓ Raster		
File Type:	IMG	154 of 154
Bands:	1	154 of 154
Grid Size (pixels):	4000 x 4000	108 of 154
	OTHER	46 of 154
Pixel Resolution:	0.50000000m x 0.50000000m	154 of 154
Pixel Type:	32-bit Floating Point	154 of 154
Compression:	None	154 of 154
No Data Value:	-3.402823E+38	154 of 154



✓ General		
Folder:	F:\Intensity_Images	
Total # of Files:	154	(All Valid)
Total File Size:	2.8 GB	(3,006,988,604 bytes)

✓ Tile Sizes	
Median Tile Size:	2,000m x 2,000m
Minimum Tile Size:	192m x 911m
Maximum Tile Size:	2,000m x 2,000m
X Range:	322310.50m to 342298.50m
Y Range:	4248180.00m to 4274938.00m

✓ Spatial Reference System		
Horizontal Projection	NAD_1983_2011_UTM_Zone_12N	154 of 154 Tiles
Horizontal Datum	NAD_1983_2011	154 of 154 Tiles
Horizontal Units	Meter	154 of 154 Tiles
Vertical Datum	NAVD88 height	154 of 154 Tiles
Vertical Units	Meter	154 of 154 Tiles

✓ Raster		
File Type:	TIF	154 of 154
Bands:	1	154 of 154
Grid Size (pixels):	4000 x 4000	108 of 154
	OTHER	46 of 154
Pixel Resolution:	0.50000000m x 0.50000000m	154 of 154
Pixel Type:	8-bit Unsigned Integer (MINISBLACK)	154 of 154
Compression:	NONE	154 of 154
No Data Value:	NONE	154 of 154

