



---

**Collection Report –  
VA Counties QL2**

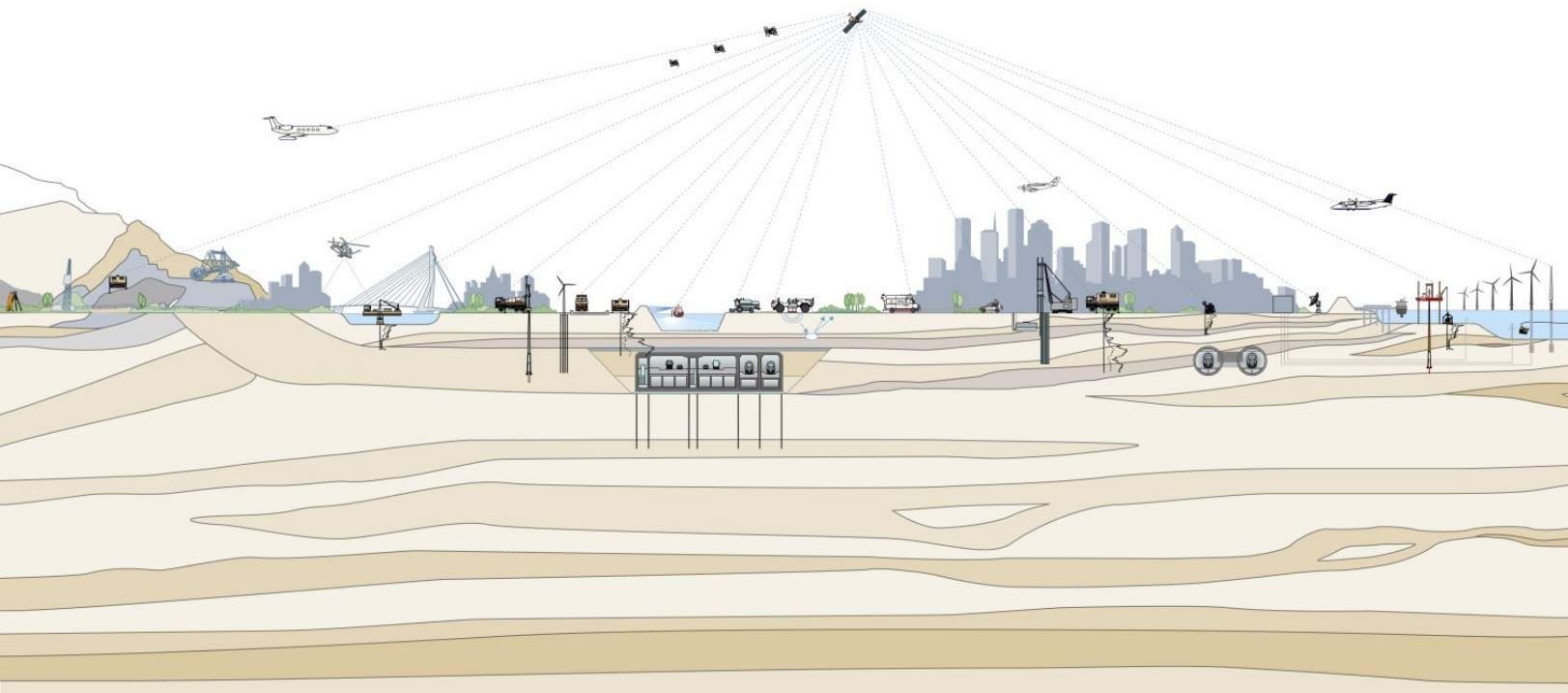
VA\_UpperMiddleNeck\_2018\_D18

Prepared for:

United States Geological Survey  
1400 Independence Road  
Rolla, MO 65401  
(573) 308-3689

July 12, 2020

USGS Contract: G17PC00015  
USGS Task Order: 140G0218F0449



## Contents

Contents	1
Abbreviations	1
1. General Project Information	2
2. Collection Details	4
<b>Collection ID:</b> 191215_118_33780088_01	4
<b>Collection ID:</b> 191219_118_33780088_02	5
<b>Collection ID:</b> 191219_130_33780088_01	6
<b>Collection ID:</b> 191220_118_33780088_03	6
<b>Collection ID:</b> 191220_130_33780088_02	7
<b>Collection ID:</b> 191220_130_33780088_03	8
<b>Collection ID:</b> 191221_118_33780088_04	9
<b>Collection ID:</b> 191221_118_33780088_05	10
<b>Collection ID:</b> 191221_130_33780191_01	11
<b>Collection ID:</b> 191228_118_33780088_06	12
<b>Collection ID:</b> 191228_130_33780191_04	13
<b>Collection ID:</b> 200101_130_33780088_04	14
<b>Collection ID:</b> 200102_118_33780088_07	15
<b>Collection ID:</b> 200102_118_33780088_08	16
<b>Collection ID:</b> 200102_130_33780088_05	17
<b>Collection ID:</b> 200107_118_33780088_09	18

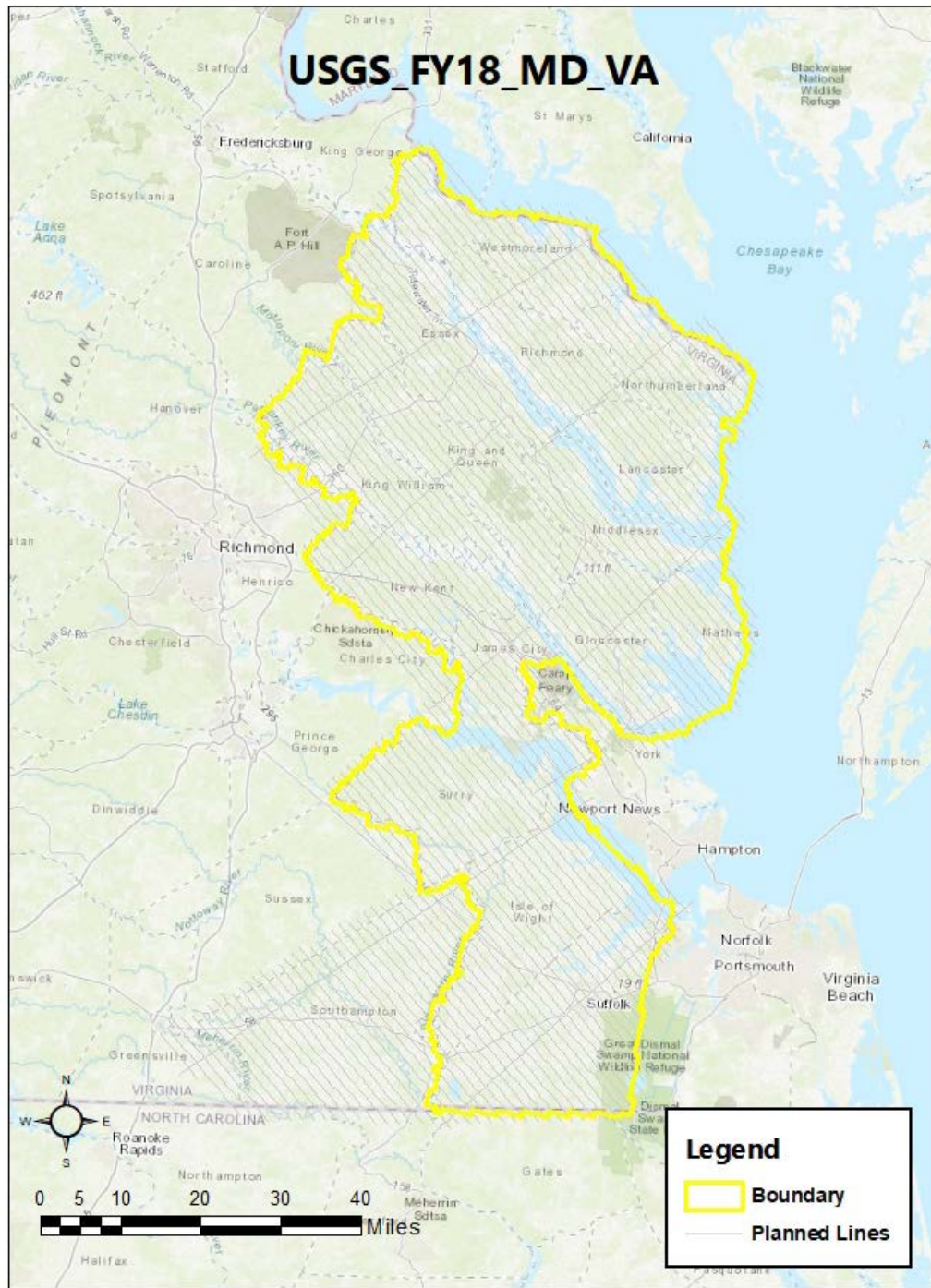
## Abbreviations

GSD	Ground Sample Distance
PPSM	Points per square meter
AMT	Above Mean Terrain
ASL	Above Sea Level
GNSS	Global Navigation Satellite System
IMU	Inertial Measurement Unit

---

## 1. General Project Information

Project Name	33780088_USGS_FY18 - VA Counties
Project Tracks	110; additionally 15 (33780191 VA_2B)
Lidar Point Density	2 ppsm
Collection AMT(s)	7900 ft
Sensor Type	Leica ALS 80
Sensor Serial #s	118, 130
# of Collections	16
Collection Date(s)	Dec 15, 2019 - Jan 7, 2020



## 2. Collection Details

Listed below are the Acquisition Logs and GNSS processing plots for each Collection.

### Collection ID: 191215\_118\_33780088\_01

#### GNSS-IMU Summary Log:

##### Number of Epochs:

Total in GPB file:	24853
No processed position:	2
Missing Fwd or Rev:	2
With bad C/A code:	0
With bad L1 Phase:	0

##### Measurement RMS Values:

L1 Phase:	0.0168 (m)
C/A Code:	1.50 (m)
L1 Doppler:	0.027 (m/s)

##### Fwd/Rev Separation RMS Values:

East:	0.012 (m)
North:	0.010 (m)
Height:	0.041 (m)

##### Fwd/Rev Sep. RMS for dual FWD/REV fixes (24849 occurrences):

East:	0.012 (m)
North:	0.010 (m)
Height:	0.041 (m)

##### Quality Number Percentages:

Q 1:	99.9 %
Q 2:	0.1 %
Q 3:	0.0 %
Q 4:	0.0 %
Q 5:	0.0 %
Q 6:	0.0 %

##### Position Standard Deviation Percentages:

0.00 - 0.10 m:	100.0 %
0.10 - 0.30 m:	0.0 %
0.30 - 1.00 m:	0.0 %
1.00 - 5.00 m:	0.0 %
5.00 m + over:	0.0 %

##### Percentages of epochs with DD\_DOP over 10.00:

DOP over Tol:	0.0 %
---------------	-------

##### Baseline Distances:

Maximum:	112.488 (km)
Minimum:	0.083 (km)
Average:	70.709 (km)

First Epoch: 0.116 (km)  
 Last Epoch: 0.112 (km)

## Collection ID: 191219\_118\_33780088\_02

### GNSS-IMU Summary Log:

#### Number of Epochs:

Total in GPB file: 28057  
 No processed position: 2  
 Missing Fwd or Rev: 2  
 With bad C/A code: 0  
 With bad L1 Phase: 0

#### Measurement RMS Values:

L1 Phase: 0.0174 (m)  
 C/A Code: 1.83 (m)  
 L1 Doppler: 0.024 (m/s)

#### Fwd/Rev Separation RMS Values:

East: 0.013 (m)  
 North: 0.011 (m)  
 Height: 0.037 (m)

#### Fwd/Rev Sep. RMS for dual FWD/REV fixes (28053 occurrences):

East: 0.013 (m)  
 North: 0.011 (m)  
 Height: 0.037 (m)

#### Quality Number Percentages:

Q 1: 100.0 %  
 Q 2: 0.0 %  
 Q 3: 0.0 %  
 Q 4: 0.0 %  
 Q 5: 0.0 %  
 Q 6: 0.0 %

#### Position Standard Deviation Percentages:

0.00 - 0.10 m: 100.0 %  
 0.10 - 0.30 m: 0.0 %  
 0.30 - 1.00 m: 0.0 %  
 1.00 - 5.00 m: 0.0 %  
 5.00 m + over: 0.0 %

#### Percentages of epochs with DD\_DOP over 10.00:

DOP over Tol: 0.0 %

#### Baseline Distances:

Maximum: 105.770 (km)  
 Minimum: 0.082 (km)  
 Average: 59.717 (km)  
 First Epoch: 0.098 (km)  
 Last Epoch: 0.126 (km)

**Collection ID: 191219\_130\_33780088\_01****GNSS-IMU Summary Log:**

## Number of Epochs:

Total in GPB file:	38864
No processed position:	2
Missing Fwd or Rev:	17
With bad C/A code:	0
With bad L1 Phase:	0

## Measurement RMS Values:

L1 Phase:	0.0195 (m)
C/A Code:	1.93 (m)
L1 Doppler:	0.023 (m/s)

## Fwd/Rev Separation RMS Values:

East:	0.015 (m)
North:	0.013 (m)
Height:	0.041 (m)

## Fwd/Rev Sep. RMS for dual FWD/REV fixes (38845 occurrences):

East:	0.015 (m)
North:	0.013 (m)
Height:	0.041 (m)

## Quality Number Percentages:

Q 1:	100.0 %
Q 2:	0.0 %
Q 3:	0.0 %
Q 4:	0.0 %
Q 5:	0.0 %
Q 6:	0.0 %

## Position Standard Deviation Percentages:

0.00 - 0.10 m:	100.0 %
0.10 - 0.30 m:	0.0 %
0.30 - 1.00 m:	0.0 %
1.00 - 5.00 m:	0.0 %
5.00 m + over:	0.0 %

## Percentages of epochs with DD\_DOP over 10.00:

DOP over Tol:	0.0 %
---------------	-------

## Baseline Distances:

Maximum:	123.612 (km)
Minimum:	0.084 (km)
Average:	72.791 (km)
First Epoch:	0.099 (km)
Last Epoch:	0.113 (km)

**Collection ID: 191220\_118\_33780088\_03****GNSS-IMU Summary Log:**

## Number of Epochs:

Total in GPB file:	24926
No processed position:	2
Missing Fwd or Rev:	2
With bad C/A code:	0
With bad L1 Phase:	0

## Measurement RMS Values:

L1 Phase:	0.0157 (m)
C/A Code:	1.60 (m)
L1 Doppler:	0.021 (m/s)

## Fwd/Rev Separation RMS Values:

East:	0.008 (m)
North:	0.006 (m)
Height:	0.013 (m)

## Fwd/Rev Sep. RMS for dual FWD/REV fixes (24922 occurrences):

East:	0.008 (m)
North:	0.006 (m)
Height:	0.013 (m)

## Quality Number Percentages:

Q 1:	100.0 %
Q 2:	0.0 %
Q 3:	0.0 %
Q 4:	0.0 %
Q 5:	0.0 %
Q 6:	0.0 %

## Position Standard Deviation Percentages:

0.00 - 0.10 m:	100.0 %
0.10 - 0.30 m:	0.0 %
0.30 - 1.00 m:	0.0 %
1.00 - 5.00 m:	0.0 %
5.00 m + over:	0.0 %

## Percentages of epochs with DD\_DOP over 10.00:

DOP over Tol:	0.0 %
---------------	-------

## Baseline Distances:

Maximum:	77.498 (km)
Minimum:	0.115 (km)
Average:	37.331 (km)
First Epoch:	0.157 (km)
Last Epoch:	0.115 (km)

**Collection ID: 191220\_130\_33780088\_02****GNSS-IMU Summary Log:**

## Number of Epochs:

Total in GPB file:	33344
No processed position:	4



Missing Fwd or Rev: 6  
 With bad C/A code: 0  
 With bad L1 Phase: 0

## Measurement RMS Values:

L1 Phase: 0.0182 (m)  
 C/A Code: 2.13 (m)  
 L1 Doppler: 0.022 (m/s)

## Fwd/Rev Separation RMS Values:

East: 0.014 (m)  
 North: 0.012 (m)  
 Height: 0.031 (m)

## Fwd/Rev Sep. RMS for dual FWD/REV fixes (33333 occurrences):

East: 0.014 (m)  
 North: 0.012 (m)  
 Height: 0.031 (m)

## Quality Number Percentages:

Q 1: 100.0 %  
 Q 2: 0.0 %  
 Q 3: 0.0 %  
 Q 4: 0.0 %  
 Q 5: 0.0 %  
 Q 6: 0.0 %

## Position Standard Deviation Percentages:

0.00 - 0.10 m: 100.0 %  
 0.10 - 0.30 m: 0.0 %  
 0.30 - 1.00 m: 0.0 %  
 1.00 - 5.00 m: 0.0 %  
 5.00 m + over: 0.0 %

## Percentages of epochs with DD\_DOP over 10.00:

DOP over Tol: 0.0 %

## Baseline Distances:

Maximum: 137.972 (km)  
 Minimum: 0.078 (km)  
 Average: 72.587 (km)  
 First Epoch: 0.106 (km)  
 Last Epoch: 0.098 (km)

**Collection ID: 191220\_130\_33780088\_03****GNSS-IMU Summary Log:**

## Number of Epochs:

Total in GPB file: 27355  
 No processed position: 2  
 Missing Fwd or Rev: 2  
 With bad C/A code: 0  
 With bad L1 Phase: 0

## Measurement RMS Values:

L1 Phase: 0.0170 (m)  
 C/A Code: 1.84 (m)  
 L1 Doppler: 0.020 (m/s)

## Fwd/Rev Separation RMS Values:

East: 0.014 (m)  
 North: 0.009 (m)  
 Height: 0.016 (m)

## Fwd/Rev Sep. RMS for dual FWD/REV fixes (27351 occurrences):

East: 0.014 (m)  
 North: 0.009 (m)  
 Height: 0.016 (m)

## Quality Number Percentages:

Q 1: 100.0 %  
 Q 2: 0.0 %  
 Q 3: 0.0 %  
 Q 4: 0.0 %  
 Q 5: 0.0 %  
 Q 6: 0.0 %

## Position Standard Deviation Percentages:

0.00 - 0.10 m: 100.0 %  
 0.10 - 0.30 m: 0.0 %  
 0.30 - 1.00 m: 0.0 %  
 1.00 - 5.00 m: 0.0 %  
 5.00 m + over: 0.0 %

## Percentages of epochs with DD\_DOP over 10.00:

DOP over Tol: 0.0 %

## Baseline Distances:

Maximum: 145.410 (km)  
 Minimum: 0.081 (km)  
 Average: 76.783 (km)  
 First Epoch: 0.098 (km)  
 Last Epoch: 0.104 (km)

**Collection ID: 191221\_118\_33780088\_04****GNSS-IMU Summary Log:**

## Number of Epochs:

Total in GPB file: 24557  
 No processed position: 2  
 Missing Fwd or Rev: 2  
 With bad C/A code: 0  
 With bad L1 Phase: 0

## Measurement RMS Values:

L1 Phase: 0.0159 (m)

C/A Code: 1.78 (m)  
L1 Doppler: 0.028 (m/s)

## Fwd/Rev Separation RMS Values:

East: 0.007 (m)  
North: 0.011 (m)  
Height: 0.013 (m)

## Fwd/Rev Sep. RMS for dual FWD/REV fixes (24553 occurrences):

East: 0.007 (m)  
North: 0.011 (m)  
Height: 0.013 (m)

## Quality Number Percentages:

Q 1: 99.9 %  
Q 2: 0.1 %  
Q 3: 0.0 %  
Q 4: 0.0 %  
Q 5: 0.0 %  
Q 6: 0.0 %

## Position Standard Deviation Percentages:

0.00 - 0.10 m: 100.0 %  
0.10 - 0.30 m: 0.0 %  
0.30 - 1.00 m: 0.0 %  
1.00 - 5.00 m: 0.0 %  
5.00 m + over: 0.0 %

## Percentages of epochs with DD\_DOP over 10.00:

DOP over Tol: 0.0 %

## Baseline Distances:

Maximum: 89.665 (km)  
Minimum: 0.085 (km)  
Average: 45.800 (km)  
First Epoch: 0.116 (km)  
Last Epoch: 0.110 (km)

**Collection ID: 191221\_118\_33780088\_05****GNSS-IMU Summary Log:**

## Number of Epochs:

Total in GPB file: 30663  
No processed position: 2  
Missing Fwd or Rev: 7  
With bad C/A code: 0  
With bad L1 Phase: 0

## Measurement RMS Values:

L1 Phase: 0.0171 (m)  
C/A Code: 1.87 (m)  
L1 Doppler: 0.022 (m/s)

## Fwd/Rev Separation RMS Values:

East: 0.019 (m)  
 North: 0.007 (m)  
 Height: 0.023 (m)

## Fwd/Rev Sep. RMS for dual FWD/REV fixes (30654 occurrences):

East: 0.019 (m)  
 North: 0.007 (m)  
 Height: 0.023 (m)

## Quality Number Percentages:

Q 1: 99.9 %  
 Q 2: 0.1 %  
 Q 3: 0.0 %  
 Q 4: 0.0 %  
 Q 5: 0.0 %  
 Q 6: 0.0 %

## Position Standard Deviation Percentages:

0.00 - 0.10 m: 100.0 %  
 0.10 - 0.30 m: 0.0 %  
 0.30 - 1.00 m: 0.0 %  
 1.00 - 5.00 m: 0.0 %  
 5.00 m + over: 0.0 %

## Percentages of epochs with DD\_DOP over 10.00:

DOP over Tol: 0.0 %

## Baseline Distances:

Maximum: 111.317 (km)  
 Minimum: 0.085 (km)  
 Average: 70.994 (km)  
 First Epoch: 0.102 (km)  
 Last Epoch: 0.121 (km)

**Collection ID: 191221\_130\_33780191\_01****GNSS-IMU Summary Log:**

## Number of Epochs:

Total in GPB file: 30962  
 No processed position: 2  
 Missing Fwd or Rev: 9  
 With bad C/A code: 0  
 With bad L1 Phase: 0

## Measurement RMS Values:

L1 Phase: 0.0172 (m)  
 C/A Code: 2.17 (m)  
 L1 Doppler: 0.020 (m/s)

## Fwd/Rev Separation RMS Values:

East: 0.014 (m)  
 North: 0.010 (m)

Height: 0.028 (m)

Fwd/Rev Sep. RMS for dual FWD/REV fixes (30951 occurrences):

East: 0.014 (m)

North: 0.010 (m)

Height: 0.028 (m)

Quality Number Percentages:

Q 1: 100.0 %

Q 2: 0.0 %

Q 3: 0.0 %

Q 4: 0.0 %

Q 5: 0.0 %

Q 6: 0.0 %

Position Standard Deviation Percentages:

0.00 - 0.10 m: 100.0 %

0.10 - 0.30 m: 0.0 %

0.30 - 1.00 m: 0.0 %

1.00 - 5.00 m: 0.0 %

5.00 m + over: 0.0 %

Percentages of epochs with DD\_DOP over 10.00:

DOP over Tol: 0.0 %

Baseline Distances:

Maximum: 134.700 (km)

Minimum: 0.087 (km)

Average: 83.202 (km)

First Epoch: 0.101 (km)

Last Epoch: 0.096 (km)

## Collection ID: 191228\_118\_33780088\_06

### GNSS-IMU Summary Log:

Number of Epochs:

Total in GPB file: 21258

No processed position: 2

Missing Fwd or Rev: 14

With bad C/A code: 0

With bad L1 Phase: 0

Measurement RMS Values:

L1 Phase: 0.0169 (m)

C/A Code: 2.12 (m)

L1 Doppler: 0.026 (m/s)

Fwd/Rev Separation RMS Values:

East: 0.013 (m)

North: 0.010 (m)

Height: 0.022 (m)

Fwd/Rev Sep. RMS for dual FWD/REV fixes (21242 occurrences):

East: 0.013 (m)  
 North: 0.010 (m)  
 Height: 0.022 (m)

Quality Number Percentages:

Q 1: 100.0 %  
 Q 2: 0.0 %  
 Q 3: 0.0 %  
 Q 4: 0.0 %  
 Q 5: 0.0 %  
 Q 6: 0.0 %

Position Standard Deviation Percentages:

0.00 - 0.10 m: 100.0 %  
 0.10 - 0.30 m: 0.0 %  
 0.30 - 1.00 m: 0.0 %  
 1.00 - 5.00 m: 0.0 %  
 5.00 m + over: 0.0 %

Percentages of epochs with DD\_DOP over 10.00:

DOP over Tol: 0.0 %

Baseline Distances:

Maximum: 82.737 (km)  
 Minimum: 0.085 (km)  
 Average: 44.823 (km)  
 First Epoch: 0.120 (km)  
 Last Epoch: 0.104 (km)

## Collection ID: 191228\_130\_33780191\_04

### GNSS-IMU Summary Log:

Number of Epochs:

Total in GPB file: 32478  
 No processed position: 2  
 Missing Fwd or Rev: 2  
 With bad C/A code: 0  
 With bad L1 Phase: 0

Measurement RMS Values:

L1 Phase: 0.0176 (m)  
 C/A Code: 1.70 (m)  
 L1 Doppler: 0.023 (m/s)

Fwd/Rev Separation RMS Values:

East: 0.020 (m)  
 North: 0.009 (m)  
 Height: 0.022 (m)

Fwd/Rev Sep. RMS for dual FWD/REV fixes (32474 occurrences):

East: 0.020 (m)  
 North: 0.009 (m)  
 Height: 0.022 (m)

## Quality Number Percentages:

Q 1: 100.0 %  
 Q 2: 0.0 %  
 Q 3: 0.0 %  
 Q 4: 0.0 %  
 Q 5: 0.0 %  
 Q 6: 0.0 %

## Position Standard Deviation Percentages:

0.00 - 0.10 m: 100.0 %  
 0.10 - 0.30 m: 0.0 %  
 0.30 - 1.00 m: 0.0 %  
 1.00 - 5.00 m: 0.0 %  
 5.00 m + over: 0.0 %

## Percentages of epochs with DD\_DOP over 10.00:

DOP over Tol: 0.0 %

## Baseline Distances:

Maximum: 123.891 (km)  
 Minimum: 0.099 (km)  
 Average: 75.977 (km)  
 First Epoch: 0.149 (km)  
 Last Epoch: 0.099 (km)

**Collection ID: 200101\_130\_33780088\_04****GNSS-IMU Summary Log:**

## Number of Epochs:

Total in GPB file: 34710  
 No processed position: 4  
 Missing Fwd or Rev: 82  
 With bad C/A code: 0  
 With bad L1 Phase: 0

## Measurement RMS Values:

L1 Phase: 0.0214 (m)  
 C/A Code: 2.17 (m)  
 L1 Doppler: 0.022 (m/s)

## Fwd/Rev Separation RMS Values:

East: 0.012 (m)  
 North: 0.011 (m)  
 Height: 0.059 (m)

## Fwd/Rev Sep. RMS for dual FWD/REV fixes (34618 occurrences):

East: 0.012 (m)  
 North: 0.011 (m)  
 Height: 0.059 (m)

## Quality Number Percentages:

Q 1: 100.0 %

Q 2: 0.0 %  
 Q 3: 0.0 %  
 Q 4: 0.0 %  
 Q 5: 0.0 %  
 Q 6: 0.0 %

Position Standard Deviation Percentages:

0.00 - 0.10 m: 100.0 %  
 0.10 - 0.30 m: 0.0 %  
 0.30 - 1.00 m: 0.0 %  
 1.00 - 5.00 m: 0.0 %  
 5.00 m + over: 0.0 %

Percentages of epochs with DD\_DOP over 10.00:

DOP over Tol: 0.0 %

Baseline Distances:

Maximum: 105.475 (km)  
 Minimum: 0.078 (km)  
 Average: 69.107 (km)  
 First Epoch: 0.105 (km)  
 Last Epoch: 0.101 (km)

## Collection ID: 200102\_118\_33780088\_07

### GNSS-IMU Summary Log:

Number of Epochs:

Total in GPB file: 26746  
 No processed position: 10  
 Missing Fwd or Rev: 7  
 With bad C/A code: 0  
 With bad L1 Phase: 0

Measurement RMS Values:

L1 Phase: 0.0206 (m)  
 C/A Code: 1.65 (m)  
 L1 Doppler: 0.032 (m/s)

Fwd/Rev Separation RMS Values:

East: 0.018 (m)  
 North: 0.012 (m)  
 Height: 0.053 (m)

Fwd/Rev Sep. RMS for dual FWD/REV fixes (26728 occurrences):

East: 0.018 (m)  
 North: 0.012 (m)  
 Height: 0.053 (m)

Quality Number Percentages:

Q 1: 99.9 %  
 Q 2: 0.1 %  
 Q 3: 0.0 %  
 Q 4: 0.0 %



Q 5: 0.0 %  
 Q 6: 0.0 %

Position Standard Deviation Percentages:

0.00 - 0.10 m: 100.0 %  
 0.10 - 0.30 m: 0.0 %  
 0.30 - 1.00 m: 0.0 %  
 1.00 - 5.00 m: 0.0 %  
 5.00 m + over: 0.0 %

Percentages of epochs with DD\_DOP over 10.00:

DOP over Tol: 0.0 %

Baseline Distances:

Maximum: 104.000 (km)  
 Minimum: 0.085 (km)  
 Average: 61.781 (km)  
 First Epoch: 0.108 (km)  
 Last Epoch: 0.108 (km)

## Collection ID: 200102\_118\_33780088\_08

### GNSS-IMU Summary Log:

Number of Epochs:

Total in GPB file: 30451  
 No processed position: 2  
 Missing Fwd or Rev: 2  
 With bad C/A code: 0  
 With bad L1 Phase: 0

Measurement RMS Values:

L1 Phase: 0.0206 (m)  
 C/A Code: 1.73 (m)  
 L1 Doppler: 0.026 (m/s)

Fwd/Rev Separation RMS Values:

East: 0.028 (m)  
 North: 0.016 (m)  
 Height: 0.037 (m)

Fwd/Rev Sep. RMS for dual FWD/REV fixes (30447 occurrences):

East: 0.028 (m)  
 North: 0.016 (m)  
 Height: 0.037 (m)

Quality Number Percentages:

Q 1: 99.9 %  
 Q 2: 0.1 %  
 Q 3: 0.0 %  
 Q 4: 0.0 %  
 Q 5: 0.0 %  
 Q 6: 0.0 %

## Position Standard Deviation Percentages:

0.00 - 0.10 m:	100.0 %
0.10 - 0.30 m:	0.0 %
0.30 - 1.00 m:	0.0 %
1.00 - 5.00 m:	0.0 %
5.00 m + over:	0.0 %

## Percentages of epochs with DD\_DOP over 10.00:

DOP over Tol:	0.0 %
---------------	-------

## Baseline Distances:

Maximum:	78.433 (km)
Minimum:	0.076 (km)
Average:	44.193 (km)
First Epoch:	0.123 (km)
Last Epoch:	0.098 (km)

**Collection ID: 200102\_130\_33780088\_05****GNSS-IMU Summary Log:**

## Number of Epochs:

Total in GPB file:	34332
No processed position:	2
Missing Fwd or Rev:	3
With bad C/A code:	0
With bad L1 Phase:	0

## Measurement RMS Values:

L1 Phase:	0.0225 (m)
C/A Code:	1.70 (m)
L1 Doppler:	0.026 (m/s)

## Fwd/Rev Separation RMS Values:

East:	0.041 (m)
North:	0.014 (m)
Height:	0.054 (m)

## Fwd/Rev Sep. RMS for dual FWD/REV fixes (34327 occurrences):

East:	0.041 (m)
North:	0.014 (m)
Height:	0.054 (m)

## Quality Number Percentages:

Q 1:	99.9 %
Q 2:	0.1 %
Q 3:	0.0 %
Q 4:	0.0 %
Q 5:	0.0 %
Q 6:	0.0 %

## Position Standard Deviation Percentages:

0.00 - 0.10 m:	100.0 %
0.10 - 0.30 m:	0.0 %

0.30 - 1.00 m:	0.0 %
1.00 - 5.00 m:	0.0 %
5.00 m + over:	0.0 %

Percentages of epochs with DD\_DOP over 10.00:

DOP over Tol:	0.0 %
---------------	-------

Baseline Distances:

Maximum:	83.183 (km)
Minimum:	0.083 (km)
Average:	34.452 (km)
First Epoch:	0.106 (km)
Last Epoch:	0.102 (km)

## Collection ID: 200107\_118\_33780088\_09

### GNSS-IMU Summary Log:

Number of Epochs:

Total in GPB file:	24551
No processed position:	2
Missing Fwd or Rev:	3
With bad C/A code:	0
With bad L1 Phase:	0

Measurement RMS Values:

L1 Phase:	0.0188 (m)
C/A Code:	1.15 (m)
L1 Doppler:	0.026 (m/s)

Fwd/Rev Separation RMS Values:

East:	0.016 (m)
North:	0.018 (m)
Height:	0.035 (m)

Fwd/Rev Sep. RMS for dual FWD/REV fixes (24546 occurrences):

East:	0.016 (m)
North:	0.018 (m)
Height:	0.035 (m)

Quality Number Percentages:

Q 1:	99.9 %
Q 2:	0.1 %
Q 3:	0.0 %
Q 4:	0.0 %
Q 5:	0.0 %
Q 6:	0.0 %

Position Standard Deviation Percentages:

0.00 - 0.10 m:	100.0 %
0.10 - 0.30 m:	0.0 %
0.30 - 1.00 m:	0.0 %
1.00 - 5.00 m:	0.0 %
5.00 m + over:	0.0 %

Percentages of epochs with DD\_DOP over 10.00:

DOP over Tol: 0.0 %

Baseline Distances:

Maximum: 97.037 (km)

Minimum: 0.099 (km)

Average: 68.090 (km)

First Epoch: 0.099 (km)

Last Epoch: 0.122 (km)