

Classified Point Cloud

Deliverable 1 Summary

✓ General		
Folder:	F:\Classified_LAS	
Total # of Files:	998	(All Valid)
Total File Size:	415.3 GB	(445,896,907,024 bytes)

✓ Tile Sizes	
Median Tile Size:	1,400m x 1,400m
Minimum Tile Size:	1,093m x 1,153m
Maximum Tile Size:	1,400m x 1,400m
X Range:	457800.00m to 506799.99m
Y Range:	23799.99m to 82599.99m
Elevation Range:	-123.06m to 1207.28m

✓ LAS Version And Point Record Formats	
v1.4, Point Record Format 6	998 of 998 Tiles

✓ Spatial Reference System		
Horizontal Projection	NAD_1983_NSRS2007_StatePlane_Vermont_FIPS_4400	998 of 998 Tiles
Horizontal Datum	D_NAD_1983_NSRS2007	998 of 998 Tiles
Horizontal Units	Meter	998 of 998 Tiles
Vertical Datum	NAVD88 - Geoid12b	998 of 998 Tiles
Vertical Units	Meter	998 of 998 Tiles
Storage Method	WKT	998 of 998 Tiles

✓ GPS Time Type	
Adjusted	998 of 998 Tiles

✓ File Source ID Equals 0	
Yes	998 of 998 Tiles

✓ VLR/EVLR Reserved Equals 0	
Yes	1,040 of 1,040 Records

✓ Unnecessary Bytes At End Of File	
No	998 of 998 Tiles

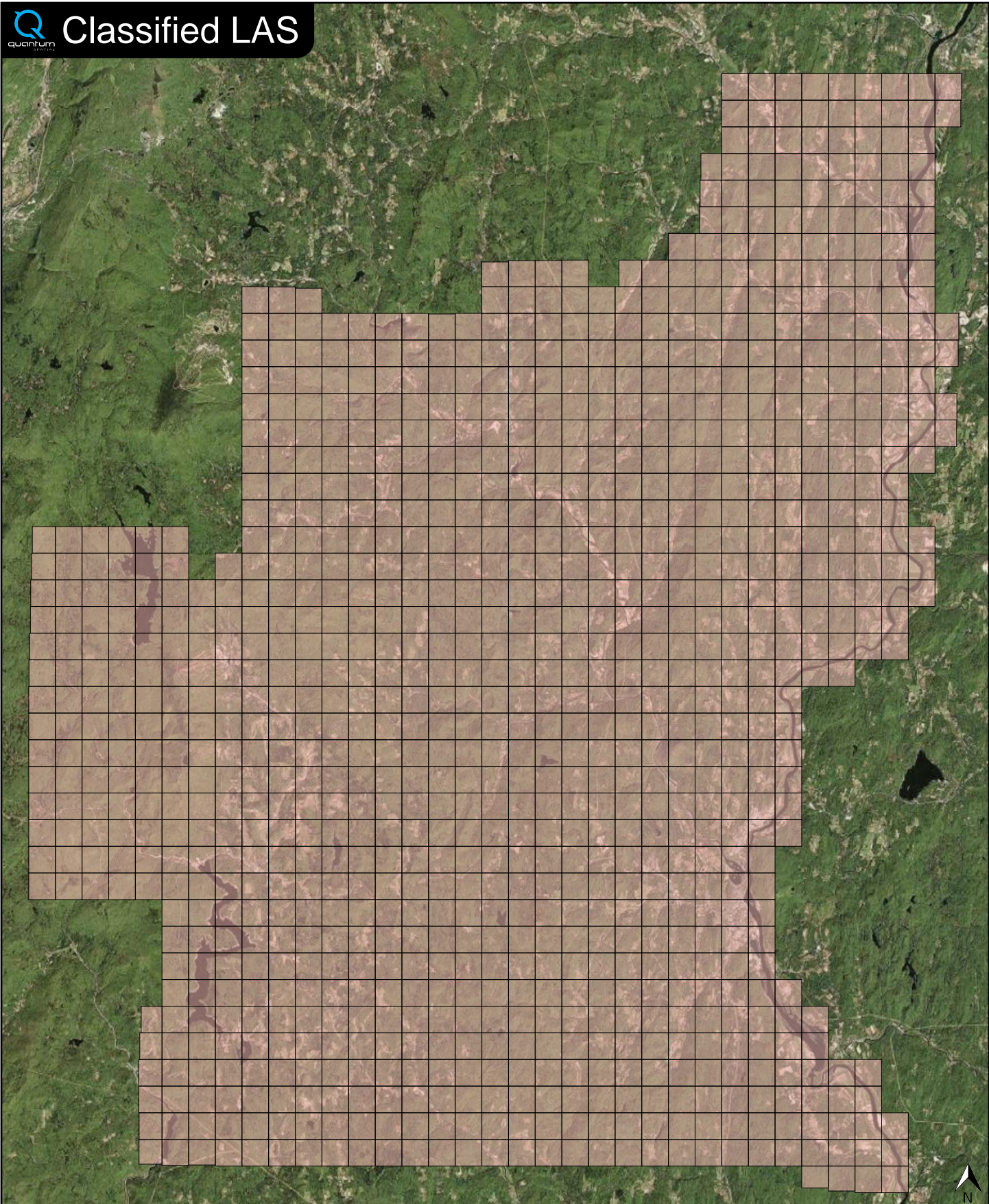
✓ Legacy Point Count Check	
Zero	998 of 998 Tiles

✓ System Identifier	
Quantum Spatial	998 of 998 Tiles

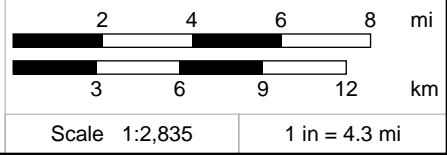
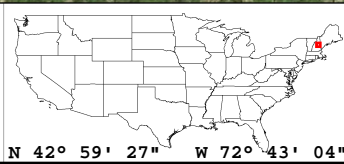
✓ Generating Software	
LiDAR Suite	998 of 998 Tiles



Classified LAS



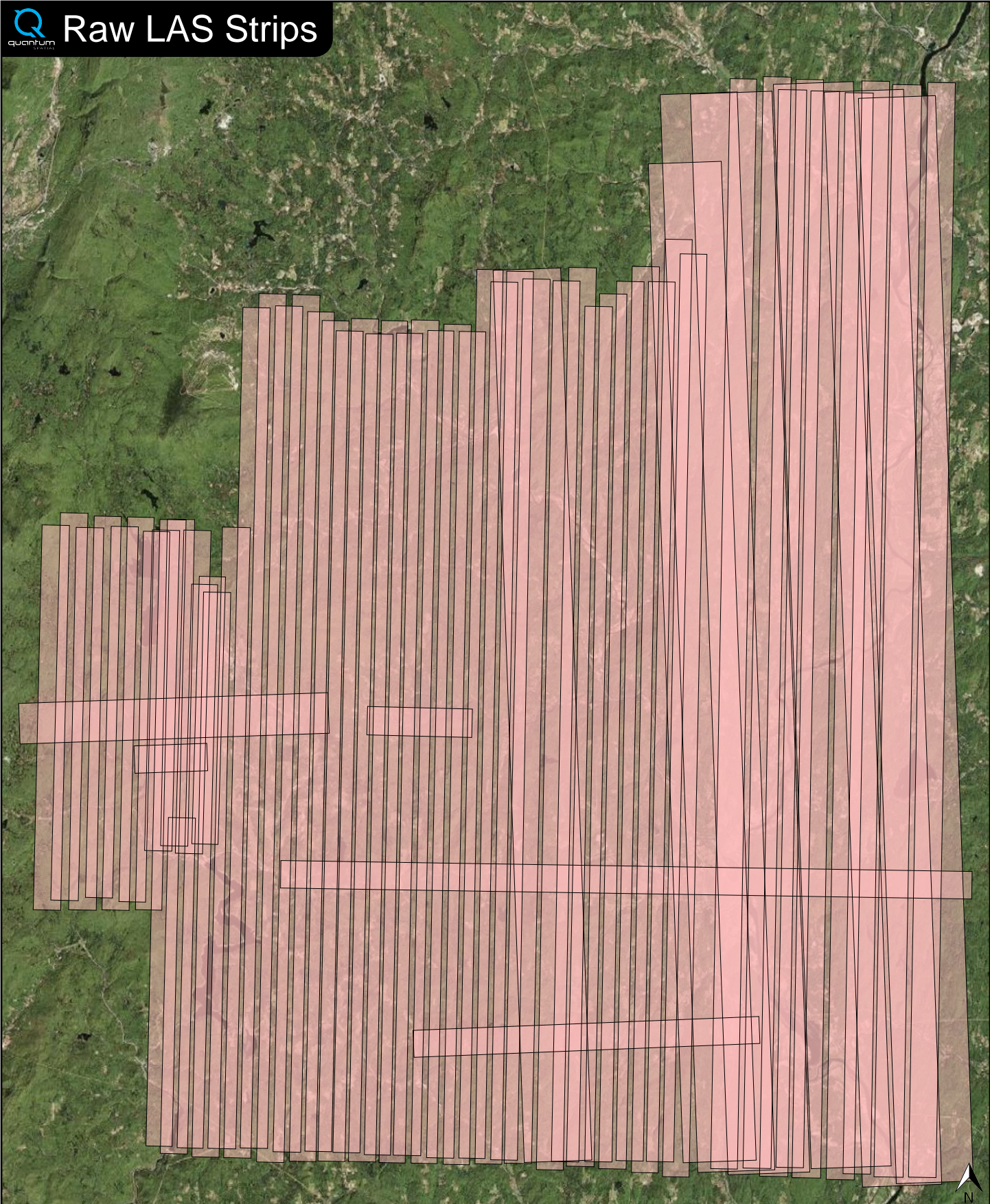
Classified LAS Tiles (998)



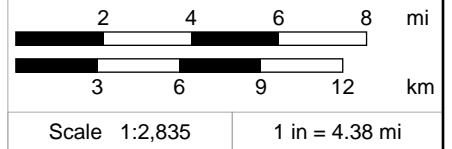
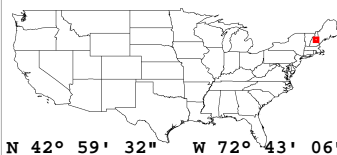
Raw LAS Flight Line Strips

Deliverable 2 Summary

✓ General		
Folder:	F:\Calibrated_FlightLines	
Total # of Files:	65	(All Valid)
Total File Size:	467.5 GB	(501,941,975,515 bytes)
✓ Raw LAS Strips		
Elevation Range:	-123m to 1339m	
✓ LAS Version And Point Record Formats		
v1.4, Point Record Format 6	65 of 65 Tiles	
✓ Spatial Reference System		
Horizontal Projection	NAD_1983_NSRS2007_StatePlane_Vermont_FIPS_4400	65 of 65 Tiles
Horizontal Datum	D_NAD_1983_NSRS2007	65 of 65 Tiles
Horizontal Units	Meter	65 of 65 Tiles
Vertical Datum	NAVD88 - Geoid12b	65 of 65 Tiles
Vertical Units	Meter	65 of 65 Tiles
Storage Method	WKT	65 of 65 Tiles
✓ GPS Time Type		
Adjusted	65 of 65 Strips	
✓ File Source IDs		
Equals Zero:	None	
All Unique:	Yes	
FLs:	101 - 124, 126 - 157, 207 - 210, 901 - 905	
✓ VLR/EVLR Reserved Equals 0		
Yes	195 of 195 Records	
✓ Unnecessary Bytes At End Of File		
No	65 of 65 Strips	
✓ Legacy Point Count Check		
Zero	65 of 65 Strips	
✓ System Identifier		
Quantum Spatial	65 of 65 Strips	
✓ Generating Software		
LiDAR Suite	65 of 65 Strips	



FL Strips (65)

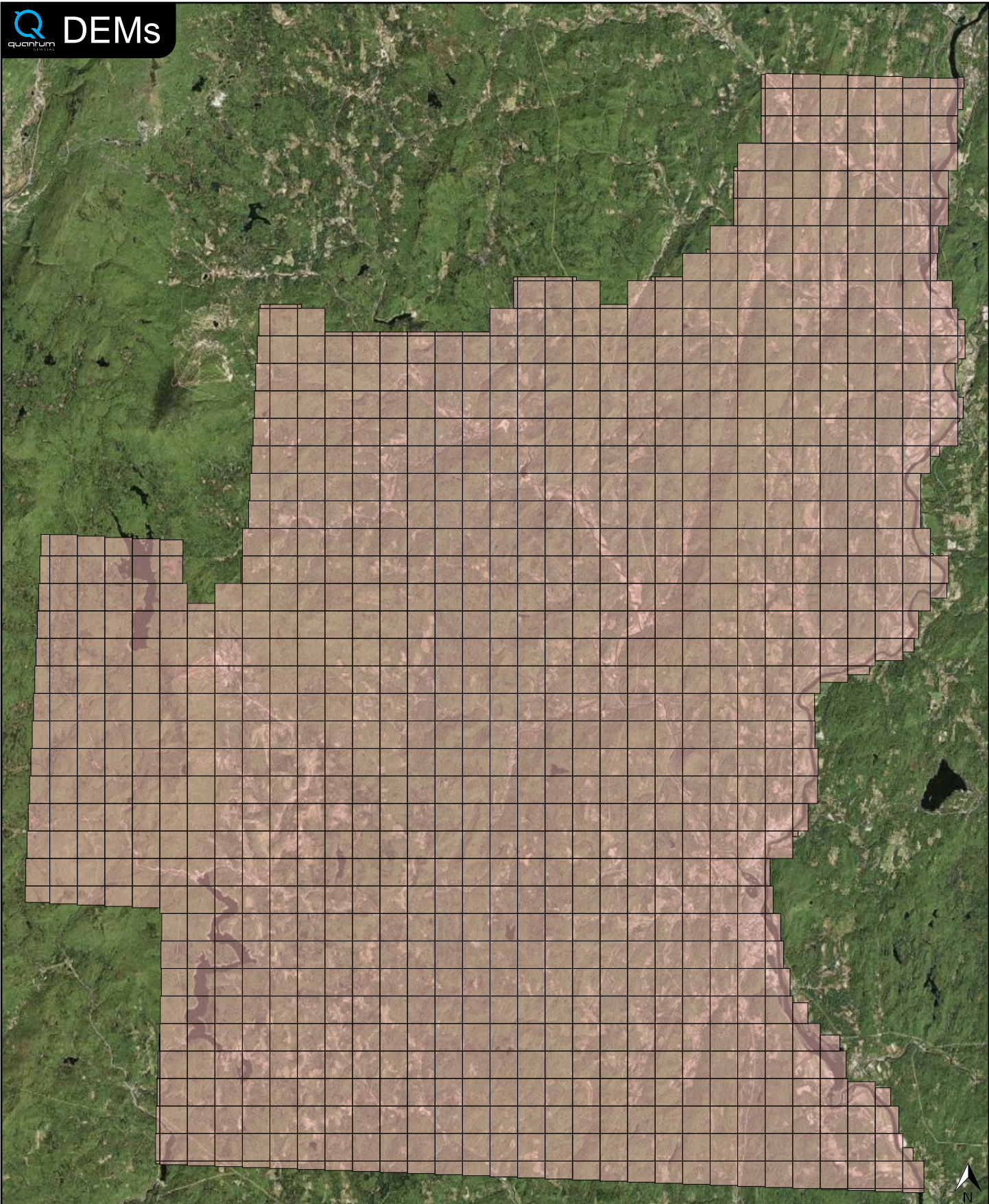


✓ General		
Folder:	F:\ERDAS_IMG_Raster_DEM_Hydro_Flattened	
Total # of Files:	998	(All Valid)
Total File Size:	14.4 GB	(15,426,859,096 bytes)

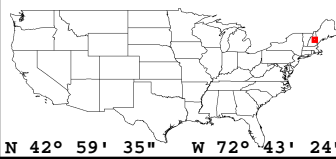
✓ Tile Sizes	
Median Tile Size:	1,400m x 1,400m
Minimum Tile Size:	34m x 51m
Maximum Tile Size:	1,400m x 1,400m
X Range:	457954.00m to 505770.30m
Y Range:	24989.30m to 81949.00m
Elevation Range:	54.60m to 1097.11m

✓ Spatial Reference System		
Horizontal Projection	NAD_1983_NSRS2007_StatePlane_Vermont_FIPS_4400	998 of 998 Tiles
Horizontal Datum	D_NAD_1983_NSRS2007	998 of 998 Tiles
Horizontal Units	Meter	998 of 998 Tiles
Vertical Datum	NONE	998 of 998 Tiles
Vertical Units	NONE	998 of 998 Tiles

✓ Raster		
File Type:	IMG	998 of 998
Bands:	1	998 of 998
Grid Size (pixels):	2000 x 2000	850 of 998
	OTHER	148 of 998
Pixel Resolution:	0.70000000m x 0.70000000m	998 of 998
Pixel Type:	32-bit Floating Point	998 of 998
Compression:	None	998 of 998
No Data Value:	-32767	998 of 998



DEM Tiles (998)



✓ General		
Folder:	F:\Intensity_Images	
Total # of Files:	998	(All Valid)
Total File Size:	4.9 GB	(5,214,976,228 bytes)

✓ Tile Sizes	
Median Tile Size:	1,400m x 1,400m
Minimum Tile Size:	34m x 51m
Maximum Tile Size:	1,400m x 1,400m
X Range:	457954.00m to 505770.30m
Y Range:	24989.30m to 81949.00m

✓ Spatial Reference System		
Horizontal Projection	NAD_1983_NSRS2007_StatePlane_Vermont_FIPS_4400	998 of 998 Tiles
Horizontal Datum	NAD_1983_NSRS2007	998 of 998 Tiles
Horizontal Units	Meter	998 of 998 Tiles
Vertical Datum	NONE	998 of 998 Tiles
Vertical Units	NONE	998 of 998 Tiles

✓ Raster		
File Type:	TIF	998 of 998
Bands:	1	998 of 998
Grid Size (pixels):	2000 x 2000	850 of 998
	OTHER	148 of 998
Pixel Resolution:	0.70000000m x 0.70000000m	998 of 998
Pixel Type:	8-bit Unsigned Integer (MINISBLACK)	998 of 998
Compression:	NONE	998 of 998
No Data Value:	NONE	998 of 998

