

Classified Point Cloud

Deliverable 1 Summary

✓ General		
Folder:	F:\Classified_LAS	
Total # of Files:	998	(All Valid)
Total File Size:	415.3 GB	(445,897,874,086 bytes)

✓ Tile Sizes	
Median Tile Size:	1,400m x 1,400m
Minimum Tile Size:	1,093m x 1,153m
Maximum Tile Size:	1,400m x 1,400m
X Range:	457800.00m to 506799.99m
Y Range:	23799.99m to 82599.99m
Elevation Range:	-123.06m to 1207.28m

✓ LAS Version And Point Record Formats	
v1.4, Point Record Format 6	998 of 998 Tiles

✓ Spatial Reference System		
Horizontal Projection	NAD83(NSRS2007) / Vermont	998 of 998 Tiles
Horizontal Datum	NAD83 (National Spatial Reference System 2007)	998 of 998 Tiles
Horizontal Units	meter	998 of 998 Tiles
Vertical Datum	NAVD88 height	998 of 998 Tiles
Vertical Units	meter	998 of 998 Tiles
Storage Method	WKT	998 of 998 Tiles

✓ GPS Time Type	
Adjusted	998 of 998 Tiles

✓ File Source ID Equals 0	
Yes	998 of 998 Tiles

✓ VLR/EVLR Reserved Equals 0	
Yes	2,038 of 2,038 Records

✓ Unnecessary Bytes At End Of File	
No	998 of 998 Tiles

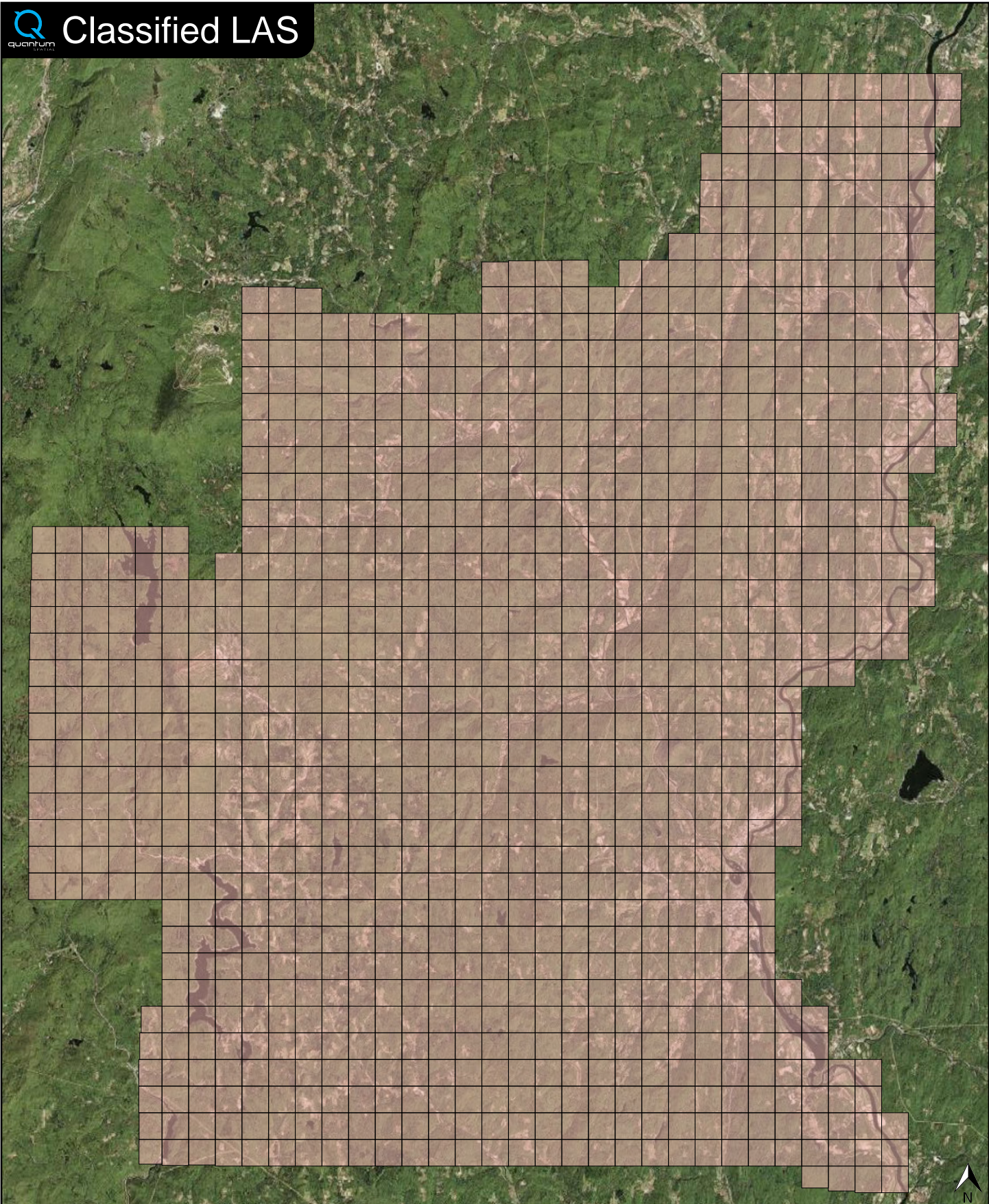
✓ Legacy Point Count Check	
Zero	998 of 998 Tiles

✓ System Identifier	
Quantum Spatial	998 of 998 Tiles

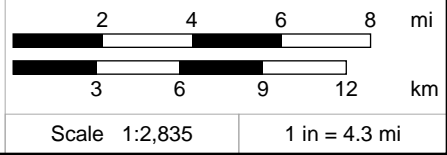
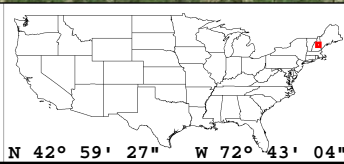
✓ Generating Software	
LiDAR Suite	998 of 998 Tiles



Classified LAS



Classified LAS Tiles (998)



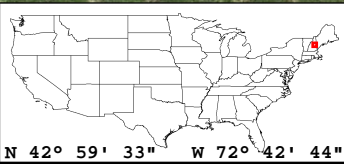
Raw LAS Flight Line Strips

Deliverable 2 Summary

✓ General		
Folder:	F:\Calibrated_Flightlines	
Total # of Files:	65 (All Valid)	
Total File Size:	478.6 GB (513,936,807,850 bytes)	
✓ Raw LAS Strips		
Elevation Range:	-123m to 1339m	
✓ LAS Version And Point Record Formats		
v1.4, Point Record Format 6		65 of 65 Strips
✓ Spatial Reference System		
Horizontal Projection	NAD83(NSRS2007) / Vermont	65 of 65 Strips
Horizontal Datum	NAD83 (National Spatial Reference System 2007)	65 of 65 Strips
Horizontal Units	meter	65 of 65 Strips
Vertical Datum	NAVD88 height	65 of 65 Strips
Vertical Units	meter	65 of 65 Strips
Storage Method	WKT	65 of 65 Strips
✓ GPS Time Type		
Adjusted		65 of 65 Strips
✓ File Source IDs		
Equals Zero:	None	
All Unique:	Yes	
FLs:	101 - 124, 126 - 157, 207 - 210, 901 - 905	
✓ VLR/EVLR Reserved Equals 0		
Yes		260 of 260 Records
✓ Unnecessary Bytes At End Of File		
No		65 of 65 Strips
✓ Legacy Point Count Check		
Zero		65 of 65 Strips
✓ System Identifier		
Quantum Spatial		65 of 65 Strips
✓ Generating Software		
LiDAR Suite		65 of 65 Strips



FL Strips (65)

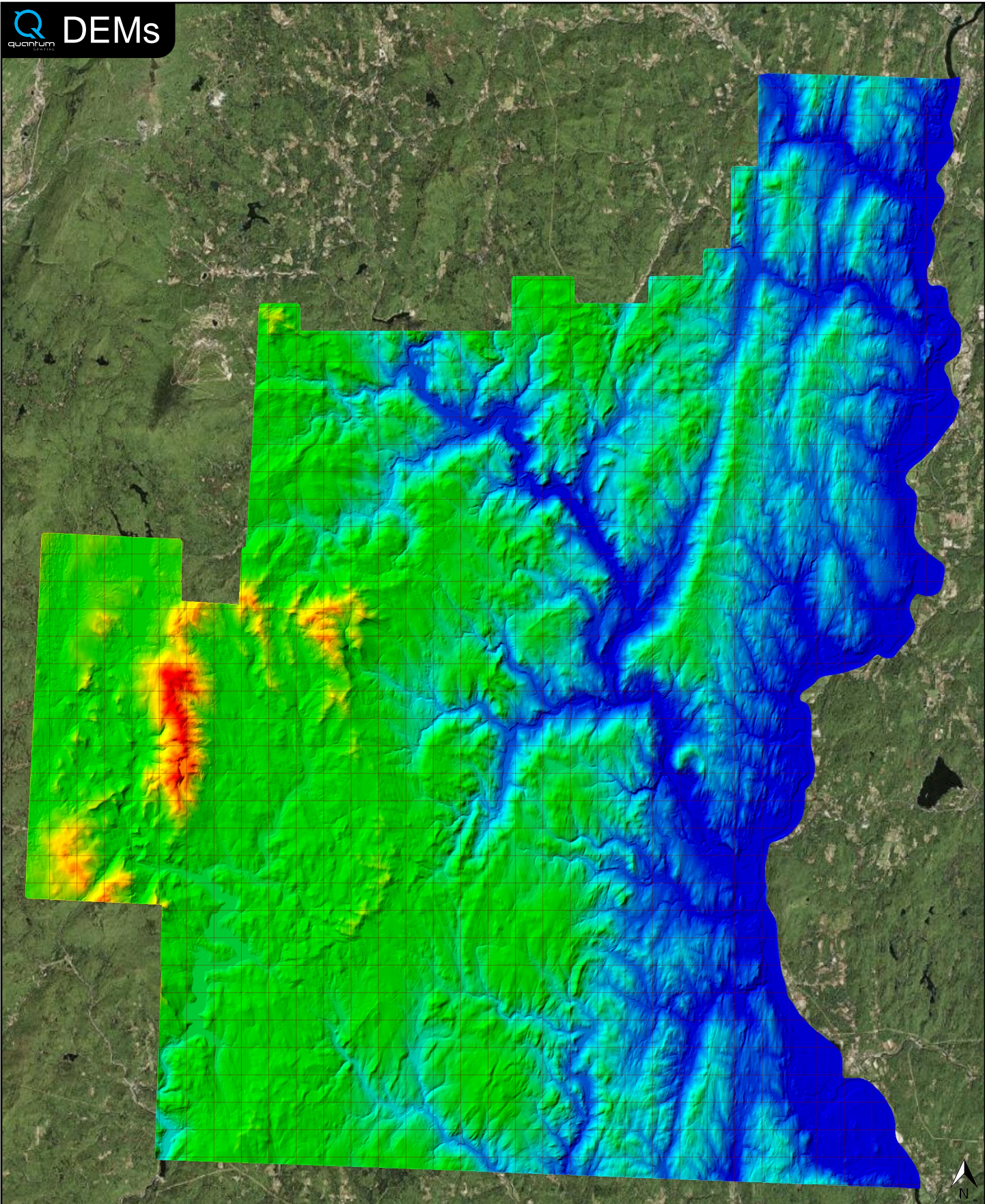


✓ General		
Folder:	F:\ERDAS_IMG_Raster_DEM_Hydro_Flattened	
Total # of Files:	998	(All Valid)
Total File Size:	14.4 GB	(15,426,859,096 bytes)

✓ Tile Sizes	
Median Tile Size:	1,400m x 1,400m
Minimum Tile Size:	34m x 51m
Maximum Tile Size:	1,400m x 1,400m
X Range:	457954.00m to 505770.30m
Y Range:	24989.30m to 81949.00m
Elevation Range:	54.60m to 1097.11m

✓ Spatial Reference System		
Horizontal Projection	NAD_1983_NSRS2007_StatePlane_Vermont_FIPS_4400	998 of 998 Tiles
Horizontal Datum	D_NAD_1983_NSRS2007	998 of 998 Tiles
Horizontal Units	Meter	998 of 998 Tiles
Vertical Datum	NAVD88 height	998 of 998 Tiles
Vertical Units	Meter	998 of 998 Tiles

✓ Raster		
File Type:	IMG	998 of 998
Bands:	1	998 of 998
Grid Size (pixels):	2000 x 2000	850 of 998
	OTHER	148 of 998
Pixel Resolution:	0.70000000m x 0.70000000m	998 of 998
Pixel Type:	32-bit Floating Point	998 of 998
Compression:	None	998 of 998
No Data Value:	-32767	998 of 998



54.60 m

575.50 m

1096.40 m



N 42° 59' 35" W 72° 43' 24"



Scale 1:2,835 1 in = 4.16 mi

✓ General		
Folder:	F:\Intensity_Images	
Total # of Files:	998	(All Valid)
Total File Size:	4.9 GB	(5,214,976,228 bytes)

✓ Tile Sizes	
Median Tile Size:	1,400m x 1,400m
Minimum Tile Size:	34m x 51m
Maximum Tile Size:	1,400m x 1,400m
X Range:	457954.00m to 505770.30m
Y Range:	24989.30m to 81949.00m

✓ Spatial Reference System		
Horizontal Projection	NAD_1983_NSRS2007_StatePlane_Vermont_FIPS_4400	998 of 998 Tiles
Horizontal Datum	NAD_1983_NSRS2007	998 of 998 Tiles
Horizontal Units	Meter	998 of 998 Tiles
Vertical Datum	NAVD88 height	998 of 998 Tiles
Vertical Units	Meter	998 of 998 Tiles

✓ Raster		
File Type:	TIF	998 of 998
Bands:	1	998 of 998
Grid Size (pixels):	2000 x 2000	850 of 998
	OTHER	148 of 998
Pixel Resolution:	0.70000000m x 0.70000000m	998 of 998
Pixel Type:	8-bit Unsigned Integer (MINISBLACK)	998 of 998
Compression:	NONE	998 of 998
No Data Value:	NONE	998 of 998

