

FOCUS on Accuracy

WI_2County_B23

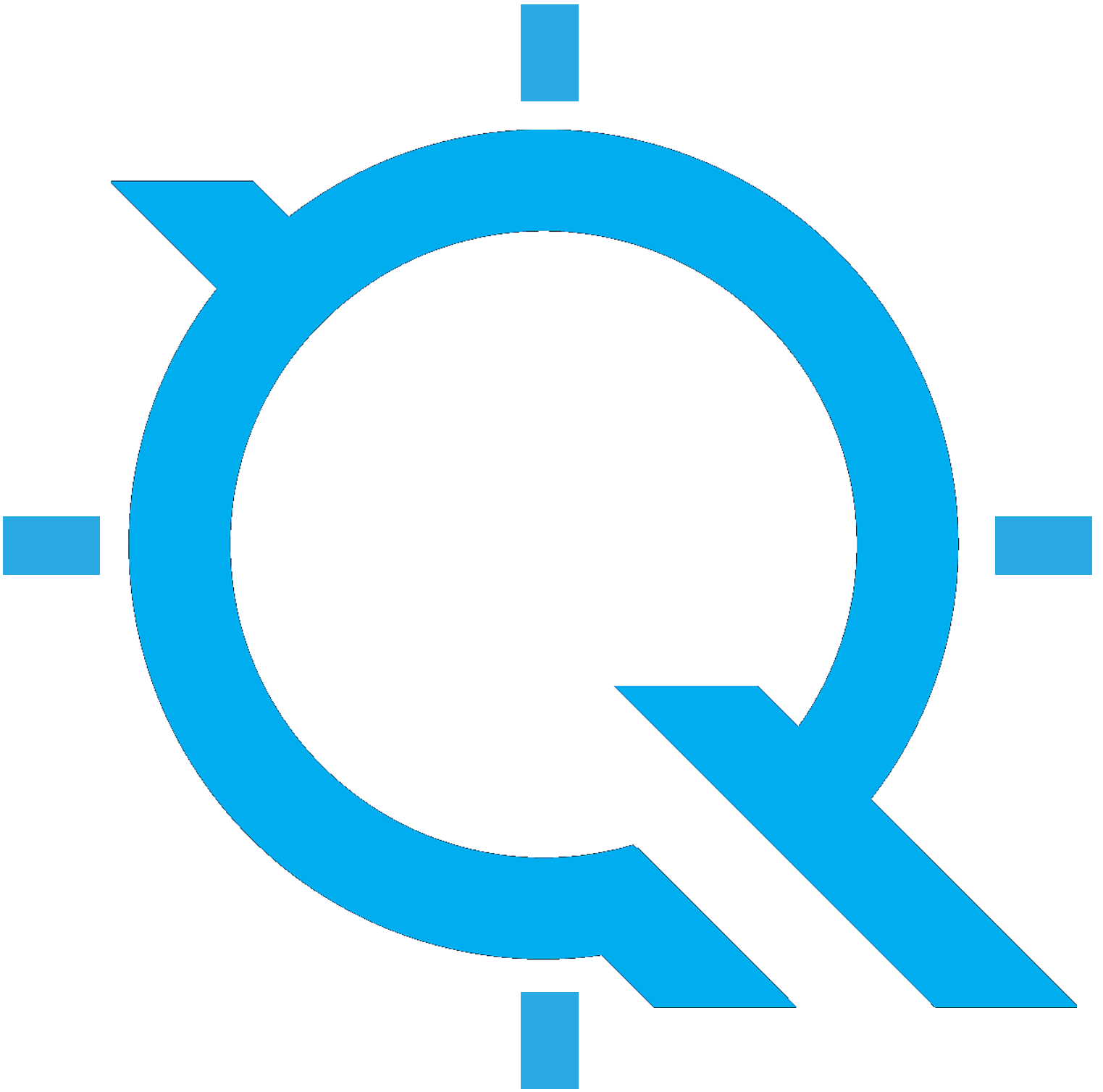
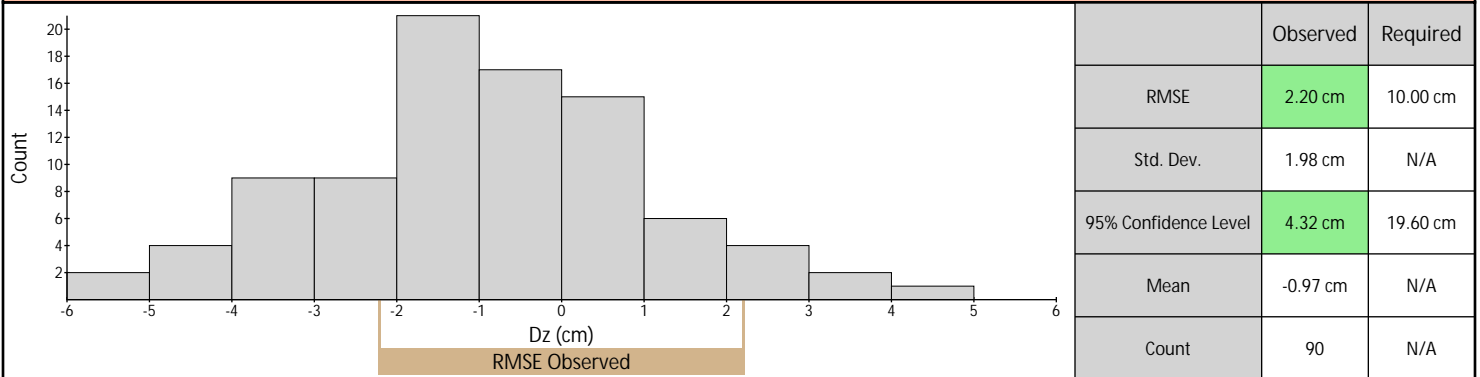


Table of Contents

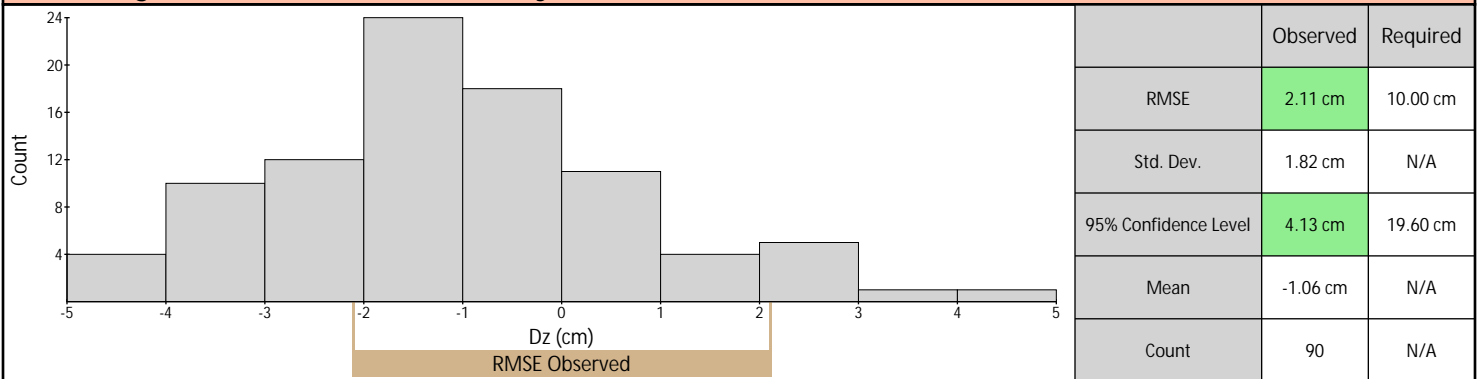
Vertical Accuracy Assessment	3
Control Point Locations	5
Control Point Breakdown	7

Vertical Accuracy Assessment

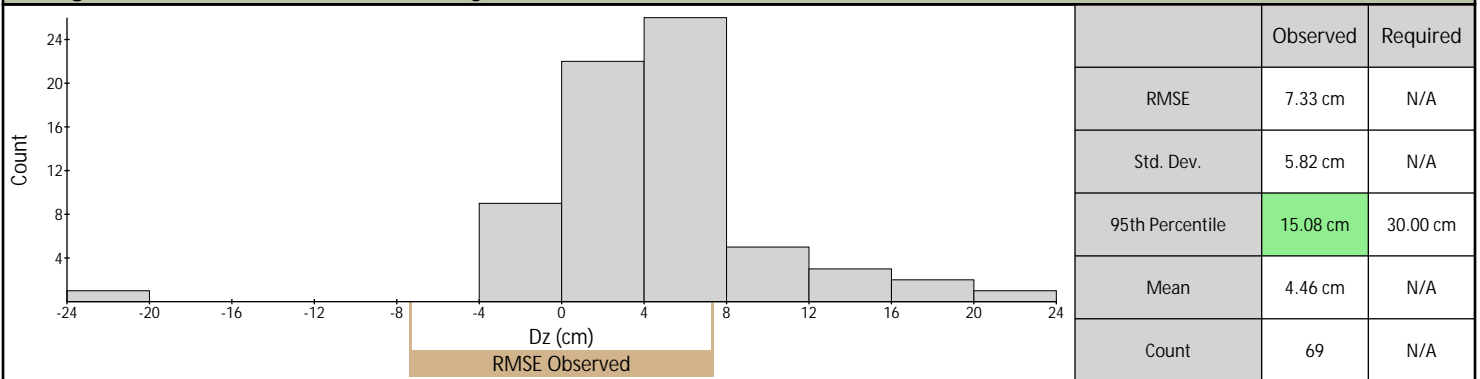
Nonvegetated Vertical Accuracy (Ground LAS)



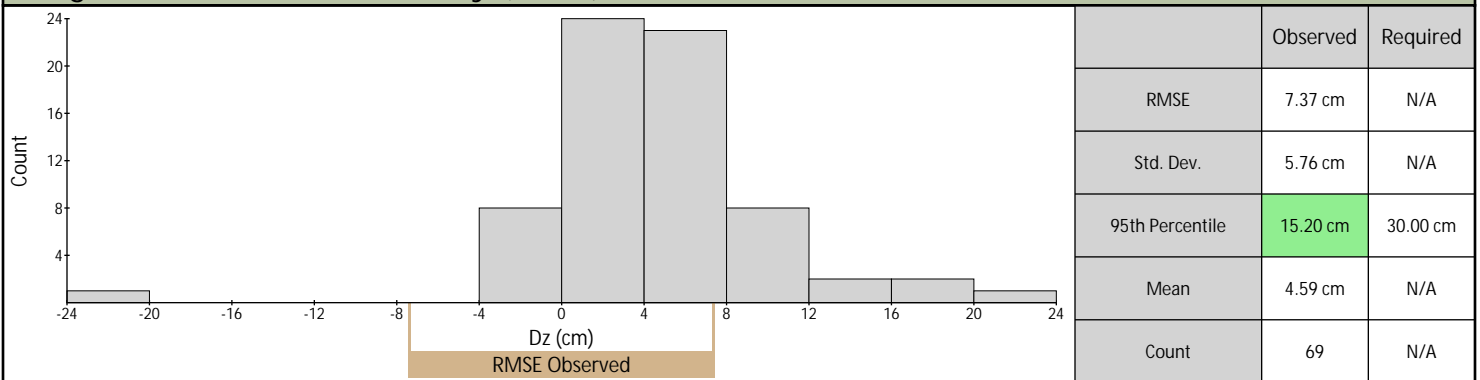
Nonvegetated Vertical Accuracy (DEM)



Vegetated Vertical Accuracy (Ground LAS)

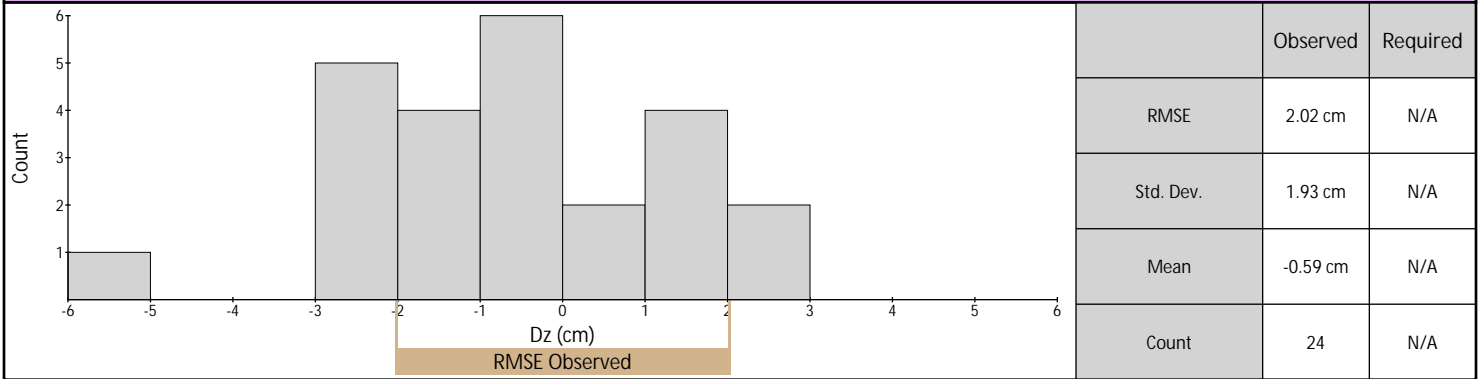


Vegetated Vertical Accuracy (DEM)

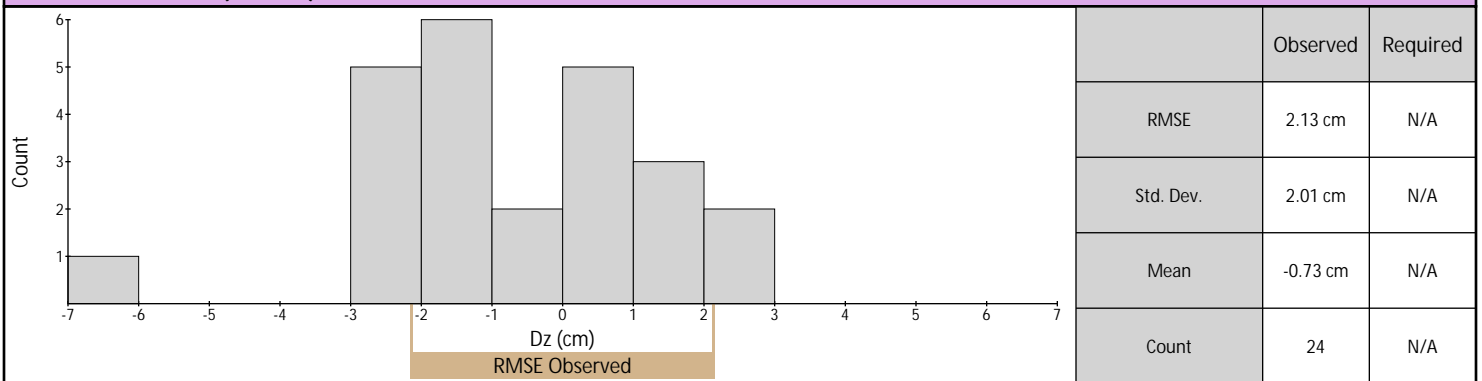


Vertical Accuracy Assessment (continued)

Calibration (Ground LAS)

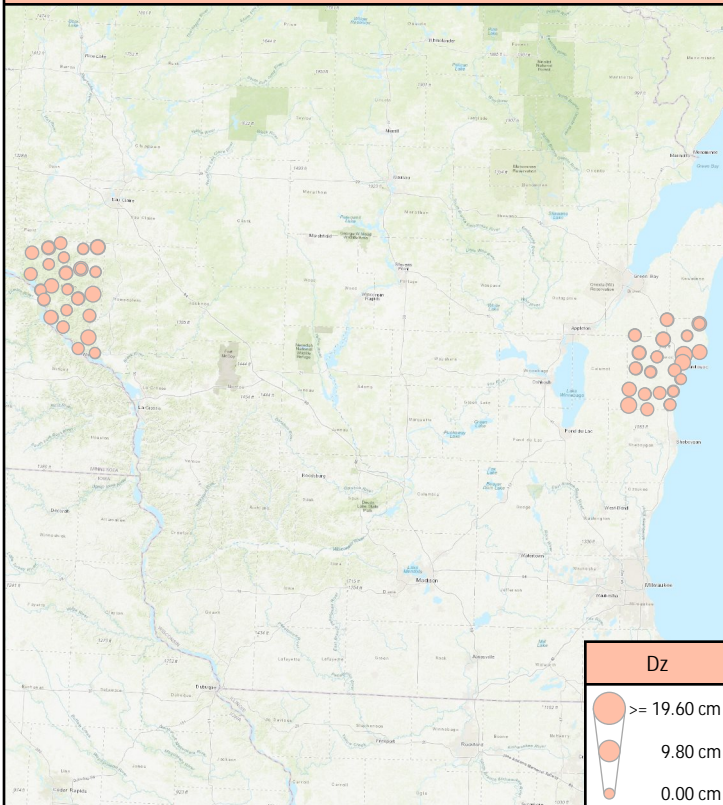


Calibration (DEM)

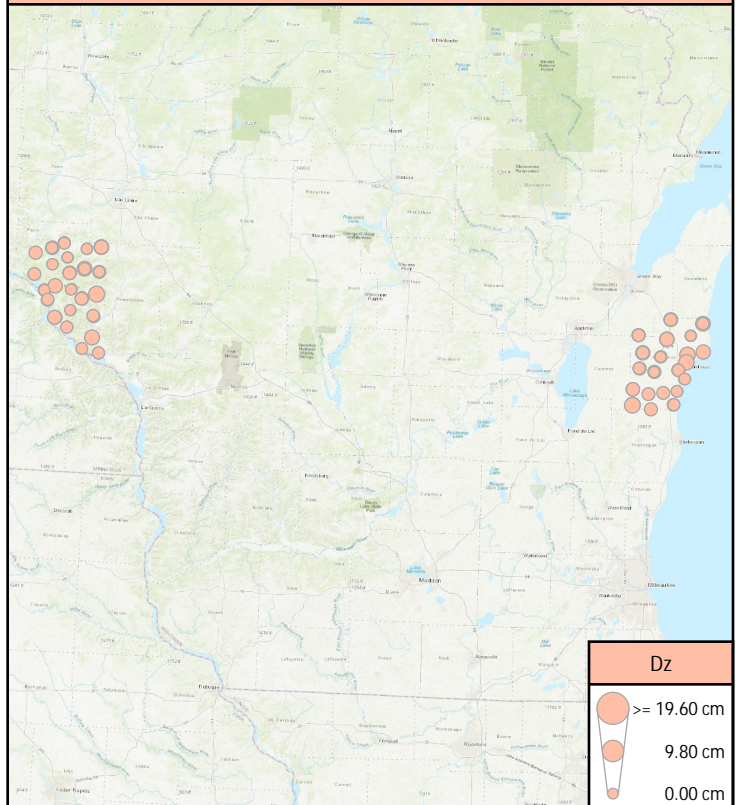


Control Point Locations

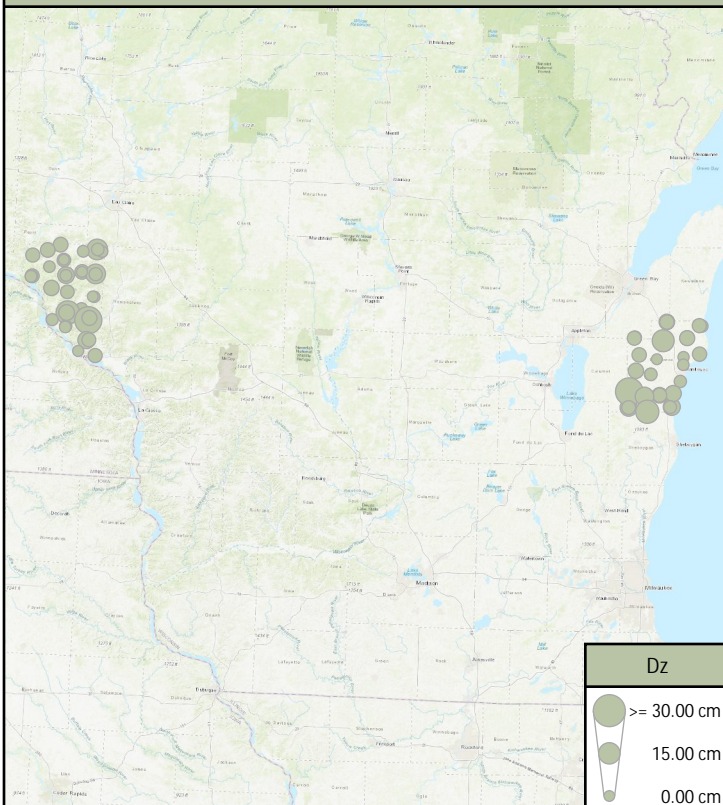
Nonvegetated Vertical Accuracy (Ground LAS)



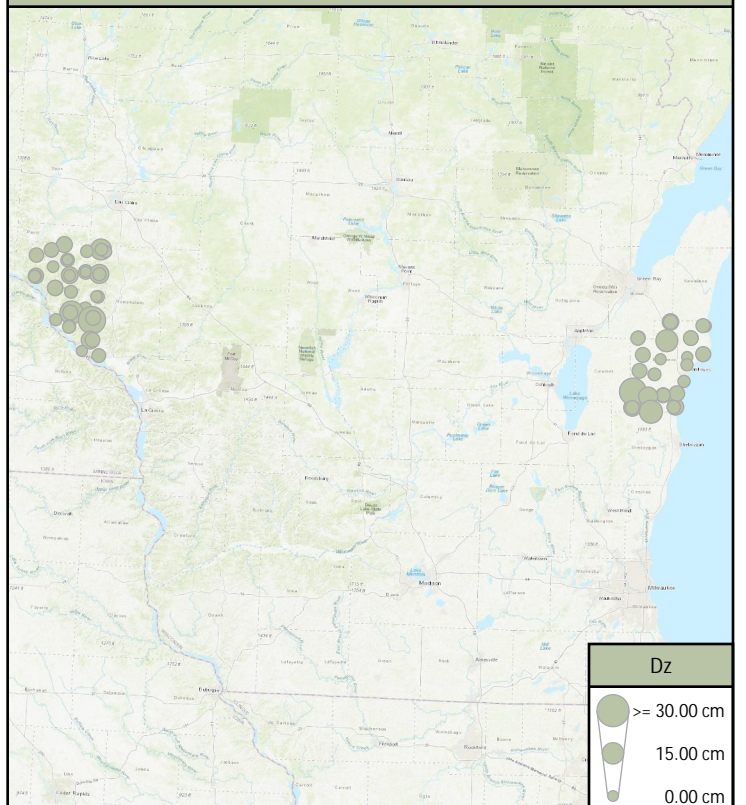
Nonvegetated Vertical Accuracy (DEM)



Vegetated Vertical Accuracy (Ground LAS)

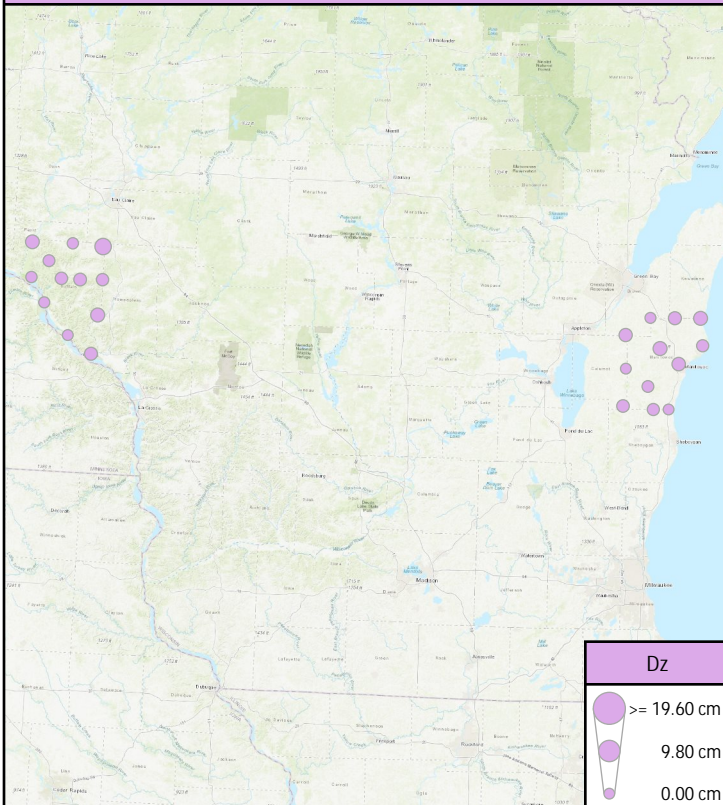


Vegetated Vertical Accuracy (DEM)

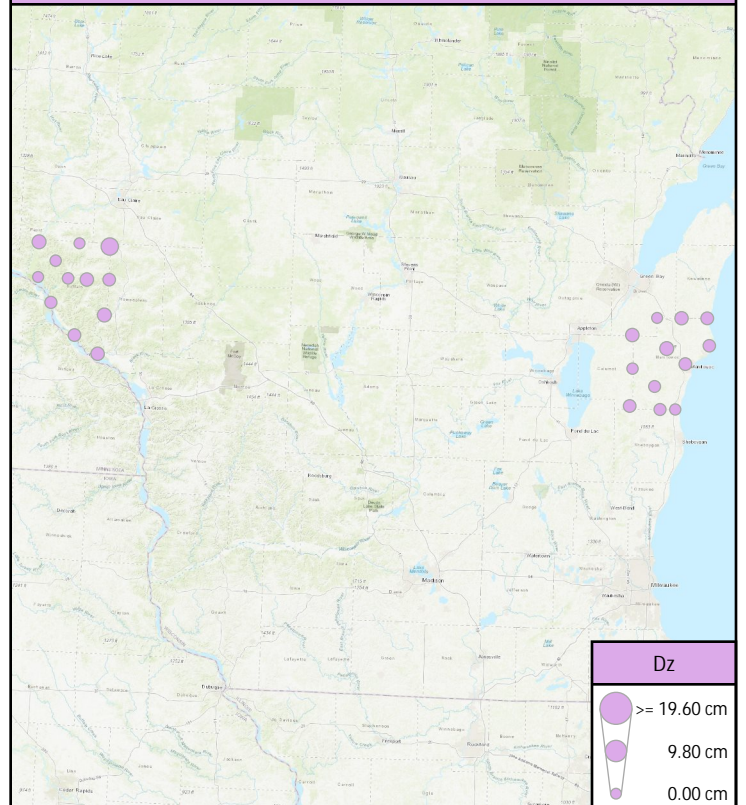


Control Point Locations (continued)

Calibration (Ground LAS)



Calibration (DEM)



Control Point Breakdown

Point	Type	Project	Ground (LAS Points)				DEM Dz
			Dz	Density	Nearest	Slope	
BE001	NVA	WI_2County_B23_Buffalo_UTM15_FoA	-0.63 cm	16.09 ppsm	0.10 m	1.72°	-1.19 cm
BE001	NVA	WI_2County_B23_Manitowoc_UTM16	-2.60 cm	16.52 ppsm	0.21 m	1.15°	-2.85 cm
BE002	NVA	WI_2County_B23_Buffalo_UTM15_FoA	-4.06 cm	10.12 ppsm	0.08 m	2.58°	-3.71 cm
BE002	NVA	WI_2County_B23_Manitowoc_UTM16	-3.52 cm	9.80 ppsm	0.09 m	1.15°	-3.65 cm
BE003	NVA	WI_2County_B23_Buffalo_UTM15_FoA	0.72 cm	10.82 ppsm	0.15 m	1.62°	0.61 cm
BE003	NVA	WI_2County_B23_Manitowoc_UTM16	-0.77 cm	16.98 ppsm	0.10 m	1.15°	-0.68 cm
BE004	NVA	WI_2County_B23_Buffalo_UTM15_FoA	2.98 cm	10.08 ppsm	0.14 m	2.29°	2.48 cm
BE004	NVA	WI_2County_B23_Manitowoc_UTM16	-1.94 cm	18.60 ppsm	0.06 m	2.58°	-2.25 cm
BE005	NVA	WI_2County_B23_Buffalo_UTM15_FoA	1.20 cm	16.55 ppsm	0.05 m	2.83°	0.06 cm
BE005	NVA	WI_2County_B23_Manitowoc_UTM16	-3.60 cm	11.18 ppsm	0.16 m	3.15°	-3.43 cm
BE006	NVA	WI_2County_B23_Manitowoc_UTM16	-2.69 cm	14.85 ppsm	0.04 m	0.41°	-1.80 cm
BE006	NVA	WI_2County_B23_Buffalo_UTM15_FoA	-0.27 cm	11.42 ppsm	0.13 m	3.04°	-0.32 cm
BE007	NVA	WI_2County_B23_Buffalo_UTM15_FoA	0.32 cm	10.26 ppsm	0.17 m	2.23°	-0.04 cm
BE007	NVA	WI_2County_B23_Manitowoc_UTM16	-3.11 cm	10.12 ppsm	0.16 m	3.24°	-3.30 cm
BE008	NVA	WI_2County_B23_Manitowoc_UTM16	-5.30 cm	16.27 ppsm	0.13 m	0.61°	-4.01 cm
BE008	NVA	WI_2County_B23_Buffalo_UTM15_FoA	-3.52 cm	17.05 ppsm	0.16 m	2.86°	-3.68 cm
BE009	NVA	WI_2County_B23_Manitowoc_UTM16	-1.12 cm	16.87 ppsm	0.04 m	0.81°	-1.43 cm
BE009	NVA	WI_2County_B23_Buffalo_UTM15_FoA	-0.65 cm	16.23 ppsm	0.05 m	1.72°	-1.91 cm
BE010	NVA	WI_2County_B23_Manitowoc_UTM16	-3.17 cm	8.88 ppsm	0.12 m	7.65°	-3.16 cm
BE010	NVA	WI_2County_B23_Buffalo_UTM15_FoA	-2.78 cm	9.58 ppsm	0.15 m	2.00°	-2.60 cm
BE011	NVA	WI_2County_B23_Manitowoc_UTM16	-2.19 cm	9.94 ppsm	0.21 m	1.15°	-2.18 cm
BE011	NVA	WI_2County_B23_Buffalo_UTM15_FoA	1.17 cm	15.77 ppsm	0.10 m	2.43°	0.82 cm
BE012	NVA	WI_2County_B23_Manitowoc_UTM16	-2.00 cm	11.25 ppsm	0.12 m	1.42°	-2.20 cm
BE012	NVA	WI_2County_B23_Buffalo_UTM15_FoA	-2.40 cm	9.37 ppsm	0.07 m	2.29°	-2.19 cm
BE013	NVA	WI_2County_B23_Buffalo_UTM15_FoA	0.01 cm	10.26 ppsm	0.14 m	1.01°	0.07 cm
BE013	NVA	WI_2County_B23_Manitowoc_UTM16	-1.51 cm	15.53 ppsm	0.07 m	8.64°	-2.22 cm
BE014	NVA	WI_2County_B23_Buffalo_UTM15_FoA	-1.48 cm	10.40 ppsm	0.11 m	6.56°	-1.51 cm
BE014	NVA	WI_2County_B23_Manitowoc_UTM16	0.41 cm	16.84 ppsm	0.10 m	10.02°	0.21 cm

Control Point Breakdown (continued)

Point	Type	Project	Ground (LAS Points)				DEM Dz
			Dz	Density	Nearest	Slope	
BE015	NVA	WI_2County_B23_Buffalo_UTM15_FoA	-2.05 cm	10.26 ppsm	0.13 m	2.00°	-2.01 cm
BE015	NVA	WI_2County_B23_Manitowoc_UTM16	2.56 cm	11.32 ppsm	0.12 m	2.58°	2.26 cm
BE016	NVA	WI_2County_B23_Buffalo_UTM15_FoA	-2.32 cm	9.69 ppsm	0.13 m	2.23°	-2.49 cm
BE016	NVA	WI_2County_B23_Manitowoc_UTM16	-1.36 cm	18.82 ppsm	0.05 m	2.83°	-0.61 cm
BE017	NVA	WI_2County_B23_Manitowoc_UTM16	-0.98 cm	16.13 ppsm	0.14 m	2.29°	-0.66 cm
BE017	NVA	WI_2County_B23_Buffalo_UTM15_FoA	-1.42 cm	9.94 ppsm	0.16 m	2.83°	-1.70 cm
BE018	NVA	WI_2County_B23_Buffalo_UTM15_FoA	-0.33 cm	10.19 ppsm	0.03 m	6.28°	-0.17 cm
BE018	NVA	WI_2County_B23_Manitowoc_UTM16	1.50 cm	11.00 ppsm	0.17 m	2.63°	1.02 cm
BE019	NVA	WI_2County_B23_Buffalo_UTM15_FoA	-0.55 cm	15.07 ppsm	0.03 m	2.00°	-1.58 cm
BE019	NVA	WI_2County_B23_Manitowoc_UTM16	-0.88 cm	17.79 ppsm	0.16 m	1.82°	-1.57 cm
BE020	NVA	WI_2County_B23_Manitowoc_UTM16	3.45 cm	10.68 ppsm	0.22 m	0.86°	3.62 cm
BE020	NVA	WI_2County_B23_Buffalo_UTM15_FoA	-1.90 cm	10.22 ppsm	0.12 m	3.15°	-1.93 cm
BE021	NVA	WI_2County_B23_Buffalo_UTM15_FoA	-1.05 cm	9.51 ppsm	0.18 m	4.57°	-0.92 cm
BE021	NVA	WI_2County_B23_Manitowoc_UTM16	0.62 cm	10.36 ppsm	0.13 m	12.36°	0.51 cm
BE022	NVA	WI_2County_B23_Buffalo_UTM15_FoA	-0.34 cm	14.71 ppsm	0.16 m	3.84°	-0.62 cm
BE023	NVA	WI_2County_B23_Buffalo_UTM15_FoA	-0.23 cm	17.51 ppsm	0.04 m	4.45°	-0.47 cm
UA001	NVA	WI_2County_B23_Buffalo_UTM15_FoA	-1.74 cm	16.94 ppsm	0.14 m	1.22°	-1.02 cm
UA001	NVA	WI_2County_B23_Manitowoc_UTM16	-1.93 cm	9.55 ppsm	0.22 m	1.43°	-1.79 cm
UA002	NVA	WI_2County_B23_Buffalo_UTM15_FoA	-3.10 cm	9.69 ppsm	0.06 m	1.22°	-2.90 cm
UA002	NVA	WI_2County_B23_Manitowoc_UTM16	-0.93 cm	10.29 ppsm	0.13 m	1.15°	-1.36 cm
UA003	NVA	WI_2County_B23_Buffalo_UTM15_FoA	0.13 cm	10.96 ppsm	0.11 m	0.57°	-0.36 cm
UA003	NVA	WI_2County_B23_Manitowoc_UTM16	0.06 cm	16.23 ppsm	0.11 m	1.62°	-0.03 cm
UA004	NVA	WI_2County_B23_Buffalo_UTM15_FoA	-1.43 cm	16.52 ppsm	0.08 m	4.04°	0.91 cm
UA004	NVA	WI_2County_B23_Manitowoc_UTM16	-1.48 cm	19.06 ppsm	0.10 m	5.71°	-1.77 cm
UA005	NVA	WI_2County_B23_Buffalo_UTM15_FoA	2.44 cm	16.34 ppsm	0.05 m	1.15°	2.31 cm
UA005	NVA	WI_2County_B23_Manitowoc_UTM16	-3.00 cm	10.93 ppsm	0.18 m	1.43°	-3.05 cm
UA006	NVA	WI_2County_B23_Buffalo_UTM15_FoA	0.15 cm	11.71 ppsm	0.15 m	2.63°	-0.13 cm
UA006	NVA	WI_2County_B23_Manitowoc_UTM16	-3.70 cm	15.99 ppsm	0.13 m	1.43°	-3.28 cm

Control Point Breakdown (continued)

Point	Type	Project	Ground (LAS Points)				DEM Dz
			Dz	Density	Nearest	Slope	
UA007	NVA	WI_2County_B23_Buffalo_UTM15_FoA	-0.48 cm	10.01 ppsm	0.03 m	2.86°	-0.53 cm
UA007	NVA	WI_2County_B23_Manitowoc_UTM16	-1.99 cm	10.40 ppsm	0.13 m	1.15°	-1.91 cm
UA008	NVA	WI_2County_B23_Buffalo_UTM15_FoA	-0.43 cm	15.35 ppsm	0.04 m	1.72°	-1.29 cm
UA008	NVA	WI_2County_B23_Manitowoc_UTM16	-5.50 cm	11.67 ppsm	0.03 m	0.86°	-4.24 cm
UA009	NVA	WI_2County_B23_Manitowoc_UTM16	0.86 cm	15.56 ppsm	0.04 m	1.82°	-0.24 cm
UA009	NVA	WI_2County_B23_Buffalo_UTM15_FoA	-0.04 cm	16.48 ppsm	0.06 m	1.22°	-0.52 cm
UA010	NVA	WI_2County_B23_Manitowoc_UTM16	-4.53 cm	9.51 ppsm	0.11 m	2.86°	-4.23 cm
UA010	NVA	WI_2County_B23_Buffalo_UTM15_FoA	-2.00 cm	9.51 ppsm	0.04 m	0.61°	-2.07 cm
UA011	NVA	WI_2County_B23_Buffalo_UTM15_FoA	1.97 cm	8.98 ppsm	0.11 m	1.43°	1.81 cm
UA011	NVA	WI_2County_B23_Manitowoc_UTM16	-1.60 cm	10.15 ppsm	0.14 m	1.22°	-1.24 cm
UA012	NVA	WI_2County_B23_Manitowoc_UTM16	-1.68 cm	10.29 ppsm	0.11 m	4.04°	-1.44 cm
UA012	NVA	WI_2County_B23_Buffalo_UTM15_FoA	-3.30 cm	10.15 ppsm	0.13 m	2.02°	-3.22 cm
UA013	NVA	WI_2County_B23_Buffalo_UTM15_FoA	0.08 cm	15.67 ppsm	0.16 m	3.44°	-0.39 cm
UA013	NVA	WI_2County_B23_Manitowoc_UTM16	-0.25 cm	15.07 ppsm	0.07 m	1.15°	0.23 cm
UA014	NVA	WI_2County_B23_Buffalo_UTM15_FoA	0.38 cm	10.04 ppsm	0.17 m	1.22°	0.42 cm
UA014	NVA	WI_2County_B23_Manitowoc_UTM16	0.06 cm	11.32 ppsm	0.00 m	4.04°	-0.97 cm
UA015	NVA	WI_2County_B23_Buffalo_UTM15_FoA	-4.72 cm	10.57 ppsm	0.18 m	2.02°	-4.77 cm
UA015	NVA	WI_2County_B23_Manitowoc_UTM16	3.14 cm	11.53 ppsm	0.11 m	0.86°	2.50 cm
UA016	NVA	WI_2County_B23_Manitowoc_UTM16	0.00 cm	18.78 ppsm	0.11 m	1.43°	-0.87 cm
UA016	NVA	WI_2County_B23_Buffalo_UTM15_FoA	-1.53 cm	10.08 ppsm	0.20 m	1.22°	-1.92 cm
UA017	NVA	WI_2County_B23_Buffalo_UTM15_FoA	-1.35 cm	10.08 ppsm	0.08 m	3.24°	-1.23 cm
UA017	NVA	WI_2County_B23_Manitowoc_UTM16	-1.83 cm	11.32 ppsm	0.21 m	10.61°	-1.93 cm
UA018	NVA	WI_2County_B23_Manitowoc_UTM16	1.62 cm	10.61 ppsm	0.17 m	1.42°	1.84 cm
UA018	NVA	WI_2County_B23_Buffalo_UTM15_FoA	0.45 cm	9.73 ppsm	0.21 m	0.81°	0.28 cm
UA019	NVA	WI_2County_B23_Manitowoc_UTM16	0.62 cm	17.26 ppsm	0.07 m	2.63°	0.26 cm
UA019	NVA	WI_2County_B23_Buffalo_UTM15_FoA	-1.89 cm	10.43 ppsm	0.11 m	3.15°	-1.42 cm
UA020	NVA	WI_2County_B23_Manitowoc_UTM16	4.80 cm	11.00 ppsm	0.09 m	5.14°	4.55 cm
UA020	NVA	WI_2County_B23_Buffalo_UTM15_FoA	-2.85 cm	14.61 ppsm	0.09 m	1.42°	-2.91 cm

Control Point Breakdown (continued)

Point	Type	Project	Ground (LAS Points)				DEM Dz
			Dz	Density	Nearest	Slope	
UA021	NVA	WI_2County_B23_Manitowoc_UTM16	2.10 cm	11.18 ppsm	0.25 m	14.85°	2.08 cm
UA021	NVA	WI_2County_B23_Buffalo_UTM15_FoA	-1.50 cm	10.33 ppsm	0.14 m	0.86°	-1.29 cm
UA022	NVA	WI_2County_B23_Manitowoc_UTM16	-0.91 cm	15.63 ppsm	0.14 m	2.86°	-1.24 cm
UA022	NVA	WI_2County_B23_Buffalo_UTM15_FoA	-4.06 cm	15.56 ppsm	0.08 m	2.29°	-3.81 cm
UA023	NVA	WI_2County_B23_Buffalo_UTM15_FoA	1.29 cm	10.22 ppsm	0.07 m	0.29°	1.05 cm
UA024	NVA	WI_2County_B23_Buffalo_UTM15_FoA	-0.21 cm	17.58 ppsm	0.05 m	2.02°	-1.31 cm
FR001	VVA	WI_2County_B23_Manitowoc_UTM16	6.81 cm	7.22 ppsm	0.11 m	4.85°	8.05 cm
FR001	VVA	WI_2County_B23_Buffalo_UTM15_FoA	14.01 cm	4.03 ppsm	0.08 m	6.84°	14.34 cm
FR002	VVA	WI_2County_B23_Buffalo_UTM15_FoA	1.46 cm	2.12 ppsm	0.27 m	3.43°	2.57 cm
FR002	VVA	WI_2County_B23_Manitowoc_UTM16	5.33 cm	14.25 ppsm	0.13 m	5.71°	5.08 cm
FR003	VVA	WI_2County_B23_Manitowoc_UTM16	3.51 cm	8.95 ppsm	0.07 m	2.43°	3.47 cm
FR003	VVA	WI_2County_B23_Buffalo_UTM15_FoA	3.62 cm	5.80 ppsm	0.34 m	7.97°	3.94 cm
FR004	VVA	WI_2County_B23_Manitowoc_UTM16	2.00 cm	15.99 ppsm	0.19 m	1.62°	1.75 cm
FR004	VVA	WI_2County_B23_Buffalo_UTM15_FoA	3.92 cm	9.55 ppsm	0.30 m	1.43°	3.91 cm
FR005	VVA	WI_2County_B23_Manitowoc_UTM16	6.92 cm	6.72 ppsm	0.06 m	2.02°	5.95 cm
FR005	VVA	WI_2County_B23_Buffalo_UTM15_FoA	5.41 cm	6.44 ppsm	0.13 m	5.85°	5.36 cm
FR006	VVA	WI_2County_B23_Manitowoc_UTM16	1.91 cm	13.62 ppsm	0.12 m	3.24°	1.75 cm
FR006	VVA	WI_2County_B23_Buffalo_UTM15_FoA	12.66 cm	8.56 ppsm	0.08 m	2.00°	11.73 cm
FR007	VVA	WI_2County_B23_Buffalo_UTM15_FoA	8.33 cm	7.43 ppsm	0.41 m	5.05°	8.58 cm
FR007	VVA	WI_2County_B23_Manitowoc_UTM16	9.31 cm	10.96 ppsm	0.14 m	1.43°	9.33 cm
FR008	VVA	WI_2County_B23_Buffalo_UTM15_FoA	4.42 cm	9.12 ppsm	0.13 m	2.83°	6.47 cm
FR008	VVA	WI_2County_B23_Manitowoc_UTM16	2.38 cm	11.42 ppsm	0.04 m	3.15°	2.54 cm
FR009	VVA	WI_2County_B23_Buffalo_UTM15_FoA	4.83 cm	7.46 ppsm	0.13 m	5.85°	5.97 cm
FR010	VVA	WI_2County_B23_Buffalo_UTM15_FoA	2.28 cm	5.20 ppsm	0.17 m	10.61°	3.87 cm
FR011	VVA	WI_2County_B23_Buffalo_UTM15_FoA	17.88 cm	3.25 ppsm	0.20 m	8.25°	17.43 cm
FR012	VVA	WI_2County_B23_Buffalo_UTM15_FoA	-23.07 cm	6.65 ppsm	0.09 m	11.86°	-23.19 cm
FR013	VVA	WI_2County_B23_Buffalo_UTM15_FoA	1.90 cm	8.81 ppsm	0.17 m	10.42°	2.46 cm
SH001	VVA	WI_2County_B23_Buffalo_UTM15_FoA	-0.75 cm	11.95 ppsm	0.09 m	3.84°	-1.38 cm

Control Point Breakdown (continued)

Point	Type	Project	Ground (LAS Points)				DEM Dz
			Dz	Density	Nearest	Slope	
SH001	VVA	WI_2County_B23_Manitowoc_UTM16	-2.19 cm	9.76 ppsm	0.20 m	1.42°	-1.24 cm
SH002	VVA	WI_2County_B23_Manitowoc_UTM16	1.30 cm	16.34 ppsm	0.10 m	3.72°	1.00 cm
SH002	VVA	WI_2County_B23_Buffalo_UTM15_FoA	-0.15 cm	5.66 ppsm	0.13 m	1.42°	0.91 cm
SH003	VVA	WI_2County_B23_Manitowoc_UTM16	8.92 cm	9.62 ppsm	0.11 m	1.82°	8.20 cm
SH003	VVA	WI_2County_B23_Buffalo_UTM15_FoA	-0.70 cm	6.93 ppsm	0.16 m	5.71°	-2.64 cm
SH004	VVA	WI_2County_B23_Manitowoc_UTM16	6.86 cm	16.41 ppsm	0.01 m	3.43°	8.14 cm
SH004	VVA	WI_2County_B23_Buffalo_UTM15_FoA	1.31 cm	7.36 ppsm	0.16 m	13.77°	2.91 cm
SH005	VVA	WI_2County_B23_Buffalo_UTM15_FoA	9.08 cm	4.74 ppsm	0.09 m	5.14°	9.95 cm
TW001	VVA	WI_2County_B23_Buffalo_UTM15_FoA	5.72 cm	16.38 ppsm	0.15 m	3.72°	7.50 cm
TW001	VVA	WI_2County_B23_Manitowoc_UTM16	5.12 cm	9.27 ppsm	0.09 m	2.58°	5.04 cm
TW002	VVA	WI_2County_B23_Buffalo_UTM15_FoA	2.61 cm	10.22 ppsm	0.12 m	3.64°	2.40 cm
TW002	VVA	WI_2County_B23_Manitowoc_UTM16	4.83 cm	9.69 ppsm	0.15 m	3.24°	4.63 cm
TW003	VVA	WI_2County_B23_Manitowoc_UTM16	6.08 cm	16.45 ppsm	0.11 m	3.72°	5.62 cm
TW003	VVA	WI_2County_B23_Buffalo_UTM15_FoA	5.46 cm	10.29 ppsm	0.09 m	5.85°	5.17 cm
TW004	VVA	WI_2County_B23_Manitowoc_UTM16	4.61 cm	17.47 ppsm	0.09 m	0.81°	4.70 cm
TW004	VVA	WI_2County_B23_Buffalo_UTM15_FoA	4.73 cm	16.45 ppsm	0.08 m	4.25°	5.13 cm
TW005	VVA	WI_2County_B23_Buffalo_UTM15_FoA	-0.01 cm	12.17 ppsm	0.25 m	9.24°	-0.10 cm
TW005	VVA	WI_2County_B23_Manitowoc_UTM16	15.80 cm	10.65 ppsm	0.10 m	2.86°	15.78 cm
TW006	VVA	WI_2County_B23_Buffalo_UTM15_FoA	1.20 cm	10.08 ppsm	0.12 m	2.86°	1.15 cm
TW006	VVA	WI_2County_B23_Manitowoc_UTM16	5.03 cm	17.19 ppsm	0.11 m	1.82°	6.09 cm
TW007	VVA	WI_2County_B23_Manitowoc_UTM16	5.20 cm	10.61 ppsm	0.02 m	2.86°	5.77 cm
TW007	VVA	WI_2County_B23_Buffalo_UTM15_FoA	0.18 cm	11.11 ppsm	0.17 m	4.86°	-0.17 cm
TW008	VVA	WI_2County_B23_Manitowoc_UTM16	-0.70 cm	15.81 ppsm	0.18 m	1.82°	-0.62 cm
TW008	VVA	WI_2County_B23_Buffalo_UTM15_FoA	3.47 cm	15.53 ppsm	0.16 m	4.04°	3.58 cm
TW009	VVA	WI_2County_B23_Buffalo_UTM15_FoA	-1.53 cm	9.48 ppsm	0.18 m	1.15°	-1.49 cm
TW009	VVA	WI_2County_B23_Manitowoc_UTM16	0.12 cm	16.06 ppsm	0.23 m	6.85°	0.57 cm
TW010	VVA	WI_2County_B23_Buffalo_UTM15_FoA	1.50 cm	15.10 ppsm	0.12 m	1.72°	1.92 cm
TW010	VVA	WI_2County_B23_Manitowoc_UTM16	1.09 cm	16.02 ppsm	0.11 m	2.00°	1.99 cm

Control Point Breakdown (continued)

Point	Type	Project	Ground (LAS Points)				DEM Dz
			Dz	Density	Nearest	Slope	
TW011	VVA	WI_2County_B23_Buffalo_UTM15_FoA	6.58 cm	9.44 ppsm	0.17 m	20.54°	6.56 cm
TW011	VVA	WI_2County_B23_Manitowoc_UTM16	6.57 cm	9.48 ppsm	0.17 m	2.00°	5.82 cm
TW012	VVA	WI_2County_B23_Manitowoc_UTM16	2.49 cm	10.15 ppsm	0.15 m	1.43°	2.79 cm
TW012	VVA	WI_2County_B23_Buffalo_UTM15_FoA	4.04 cm	14.18 ppsm	0.15 m	12.13°	2.98 cm
TW013	VVA	WI_2County_B23_Buffalo_UTM15_FoA	-0.06 cm	10.57 ppsm	0.11 m	4.00°	0.97 cm
TW013	VVA	WI_2County_B23_Manitowoc_UTM16	2.23 cm	9.48 ppsm	0.08 m	1.42°	2.15 cm
TW014	VVA	WI_2County_B23_Manitowoc_UTM16	23.63 cm	11.00 ppsm	0.20 m	1.72°	22.83 cm
TW014	VVA	WI_2County_B23_Buffalo_UTM15_FoA	7.13 cm	9.69 ppsm	0.18 m	19.03°	5.96 cm
TW015	VVA	WI_2County_B23_Manitowoc_UTM16	7.70 cm	18.14 ppsm	0.07 m	2.29°	6.58 cm
TW015	VVA	WI_2County_B23_Buffalo_UTM15_FoA	6.05 cm	10.22 ppsm	0.18 m	10.20°	5.90 cm
TW016	VVA	WI_2County_B23_Manitowoc_UTM16	4.79 cm	9.87 ppsm	0.23 m	2.29°	4.57 cm
TW016	VVA	WI_2County_B23_Buffalo_UTM15_FoA	1.77 cm	10.43 ppsm	0.03 m	1.42°	1.81 cm
TW017	VVA	WI_2County_B23_Buffalo_UTM15_FoA	4.47 cm	13.12 ppsm	0.16 m	8.64°	5.56 cm
TW017	VVA	WI_2County_B23_Manitowoc_UTM16	11.12 cm	9.02 ppsm	0.17 m	2.29°	11.64 cm
TW018	VVA	WI_2County_B23_Buffalo_UTM15_FoA	-0.42 cm	10.26 ppsm	0.12 m	1.01°	-0.45 cm
TW018	VVA	WI_2County_B23_Manitowoc_UTM16	2.99 cm	15.81 ppsm	0.05 m	4.04°	3.60 cm
TW019	VVA	WI_2County_B23_Buffalo_UTM15_FoA	4.76 cm	17.37 ppsm	0.08 m	2.00°	4.16 cm
TW019	VVA	WI_2County_B23_Manitowoc_UTM16	4.40 cm	11.03 ppsm	0.12 m	0.86°	4.38 cm
TW020	VVA	WI_2County_B23_Manitowoc_UTM16	17.51 cm	11.32 ppsm	0.09 m	2.83°	17.26 cm
CA001	CAL	WI_2County_B23_Buffalo_UTM15_FoA	0.53 cm	18.00 ppsm	0.04 m	1.43°	-0.20 cm
CA001	CAL	WI_2County_B23_Manitowoc_UTM16	-0.18 cm	10.65 ppsm	0.09 m	1.43°	-0.15 cm
CA002	CAL	WI_2County_B23_Manitowoc_UTM16	-2.92 cm	15.77 ppsm	0.15 m	1.15°	-1.84 cm
CA002	CAL	WI_2County_B23_Buffalo_UTM15_FoA	2.78 cm	9.80 ppsm	0.19 m	0.86°	2.94 cm
CA003	CAL	WI_2County_B23_Buffalo_UTM15_FoA	-5.24 cm	22.14 ppsm	0.19 m	2.58°	-6.07 cm
CA003	CAL	WI_2County_B23_Manitowoc_UTM16	-2.11 cm	10.15 ppsm	0.10 m	1.15°	-2.34 cm
CA004	CAL	WI_2County_B23_Buffalo_UTM15_FoA	1.00 cm	9.97 ppsm	0.10 m	1.15°	0.57 cm
CA004	CAL	WI_2County_B23_Manitowoc_UTM16	2.30 cm	11.11 ppsm	0.17 m	2.29°	2.49 cm
CA005	CAL	WI_2County_B23_Manitowoc_UTM16	-1.29 cm	10.01 ppsm	0.24 m	0.86°	-1.54 cm

Control Point Breakdown (continued)

Point	Type	Project	Ground (LAS Points)				DEM Dz
			Dz	Density	Nearest	Slope	
CA005	CAL	WI_2County_B23_Buffalo_UTM15_FoA	-1.44 cm	9.83 ppsm	0.12 m	4.04°	-1.71 cm
CA006	CAL	WI_2County_B23_Manitowoc_UTM16	-2.98 cm	10.57 ppsm	0.05 m	2.29°	-2.89 cm
CA006	CAL	WI_2County_B23_Buffalo_UTM15_FoA	1.55 cm	13.97 ppsm	0.15 m	1.72°	0.69 cm
CA007	CAL	WI_2County_B23_Manitowoc_UTM16	-2.48 cm	11.53 ppsm	0.07 m	0.86°	-1.78 cm
CA007	CAL	WI_2County_B23_Buffalo_UTM15_FoA	-1.83 cm	17.65 ppsm	0.14 m	2.29°	-2.45 cm
CA008	CAL	WI_2County_B23_Manitowoc_UTM16	-0.03 cm	17.15 ppsm	0.08 m	2.02°	0.53 cm
CA008	CAL	WI_2County_B23_Buffalo_UTM15_FoA	-0.50 cm	9.09 ppsm	0.04 m	0.86°	0.21 cm
CA009	CAL	WI_2County_B23_Buffalo_UTM15_FoA	-0.28 cm	7.99 ppsm	0.22 m	1.43°	-1.23 cm
CA009	CAL	WI_2County_B23_Manitowoc_UTM16	0.96 cm	10.68 ppsm	0.10 m	2.43°	1.09 cm
CA010	CAL	WI_2County_B23_Buffalo_UTM15_FoA	-2.97 cm	18.36 ppsm	0.07 m	1.82°	-2.95 cm
CA010	CAL	WI_2County_B23_Manitowoc_UTM16	1.69 cm	9.80 ppsm	0.14 m	2.58°	1.75 cm
CA011	CAL	WI_2County_B23_Buffalo_UTM15_FoA	-0.08 cm	15.70 ppsm	0.05 m	0.57°	-1.74 cm
CA011	CAL	WI_2County_B23_Manitowoc_UTM16	-0.01 cm	10.43 ppsm	0.16 m	1.72°	0.41 cm
CA012	CAL	WI_2County_B23_Buffalo_UTM15_FoA	-1.99 cm	15.42 ppsm	0.14 m	1.22°	-2.38 cm
CA012	CAL	WI_2County_B23_Manitowoc_UTM16	1.27 cm	14.82 ppsm	0.23 m	3.15°	1.16 cm