

Classified Point Cloud

Deliverable 1 Summary

✓ General		
Folder:	E:\Work Package ID 183663\Florence Work Unit ID (209906)\point_cloud\tilecls	
Total # of Files:	1,579	(All Valid)
Total File Size:	211.4 GB	(226,942,617,270 bytes)

✓ Tile Sizes	
Median Tile Size:	2,500' x 2,500'
Minimum Tile Size:	8' x 8'
Maximum Tile Size:	2,500' x 2,500'
X Range:	333867.43' to 461799.73'
Y Range:	96926.63' to 203382.27'
Elevation Range:	-484.08' to 5720.62'

✓ LAS Version And Point Record Formats	
v1.4, Point Record Format 6	1,579 of 1,579 Tiles

✓ Spatial Reference System		
Horizontal Projection	NAD83(2011) / WISCRS Florence (ftUS)	1,579 of 1,579 Tiles
Horizontal Datum	NAD83 (National Spatial Reference System 2011)	1,579 of 1,579 Tiles
Horizontal Units	US survey foot	1,579 of 1,579 Tiles
Vertical Datum	NAVD88 height (ftUS) - Geoid12B (ftUS)	1,579 of 1,579 Tiles
Vertical Units	US survey foot	1,579 of 1,579 Tiles
Vertical USGS-Compliant	Yes	1,579 of 1,579 Tiles
Geoid	Geoid12B	1,579 of 1,579 Tiles
Storage Method	WKT	1,579 of 1,579 Tiles
Matches OGC Template	Yes	1,579 of 1,579 Tiles

✓ GPS Time Type	
Adjusted	1,579 of 1,579 Tiles

✓ File Source ID Equals 0	
Yes	1,579 of 1,579 Tiles

✓ VLR/EVLR Reserved Equals 0	
Yes	4,737 of 4,737 Records

✓ Unnecessary Bytes At End Of File	
No	1,579 of 1,579 Tiles

✓ Legacy Point Count Check	
Zero	1,579 of 1,579 Tiles

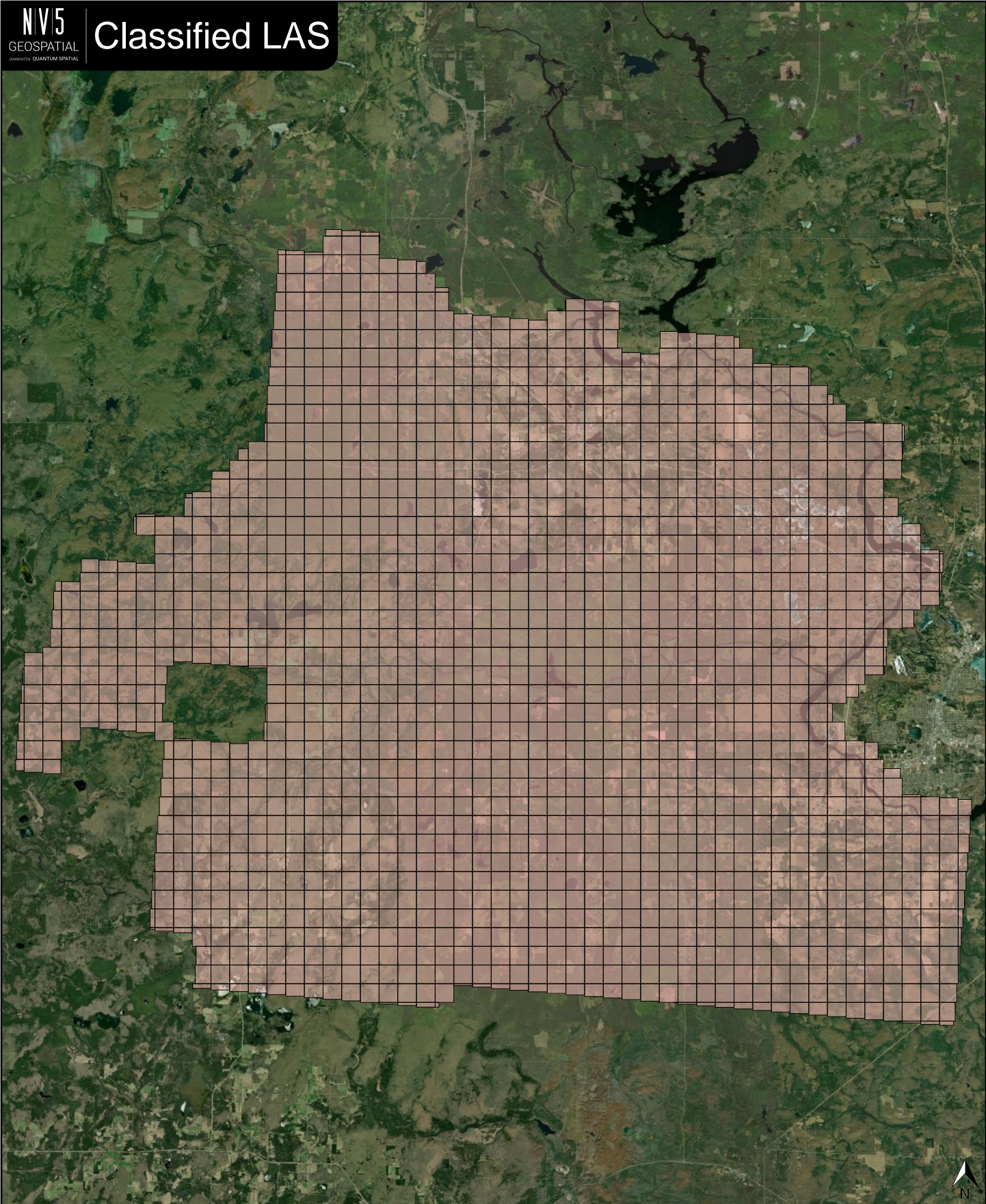
✓ System Identifier	
MERGE	1,579 of 1,579 Tiles

Classified Point Cloud Continued...

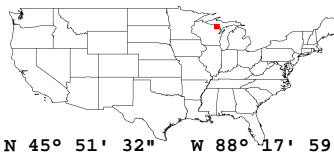
Deliverable 1 Summary

✓ Generating Software	
QSI LiDAR Suite	1,579 of 1,579 Tiles

Classified LAS



Classified LAS Tiles (1,579)

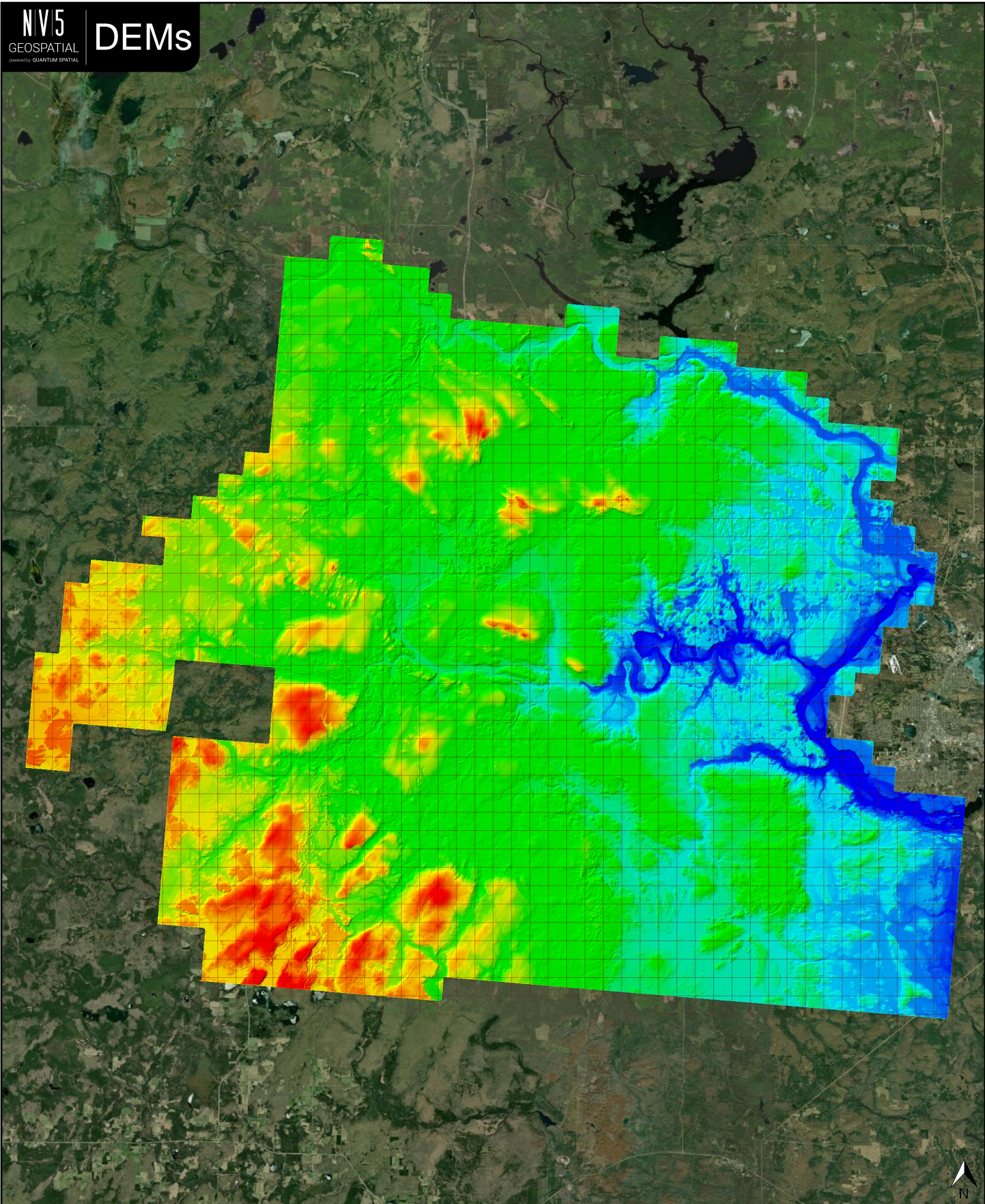


✓ General		
Folder:	E:\Work Package ID 183663\Florence Work Unit ID (209906)\bare_earth\be_rasters	
Total # of Files:	1,579	(All Valid)
Total File Size:	9.6 GB	(10,356,004,136 bytes)

✓ Tile Sizes		
Median Tile Size:	2,500' x 2,500'	
Minimum Tile Size:	2,500' x 2,500'	
Maximum Tile Size:	2,500' x 2,500'	
X Range:	332500.00' to 462500.00'	
Y Range:	95000.00' to 205000.00'	

✓ Spatial Reference System		
Horizontal Projection	NAD83(2011) / WISCRS Florence (ftUS)	1,579 of 1,579 Tiles
Horizontal Datum	NAD83 (National Spatial Reference System 2011)	1,579 of 1,579 Tiles
Horizontal Units	US survey foot	1,579 of 1,579 Tiles
Vertical Datum	NAVD88 height (ftUS) - Geoid12B (ftUS)	1,579 of 1,579 Tiles
Vertical Units	US survey foot	1,579 of 1,579 Tiles
Vertical USGS-Compliant	Yes	1,579 of 1,579 Tiles
GDAL 2.x Compatible	Yes	1,579 of 1,579 Tiles
Geoid	Geoid12B	1,579 of 1,579 Tiles
Matches OGC Template	Yes	1,579 of 1,579 Tiles

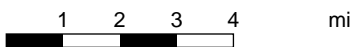
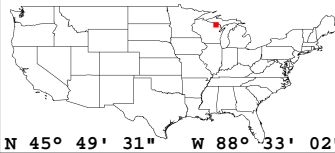
✓ Raster		
File Type:	TIF	1,579 of 1,579
Bands:	1	1,579 of 1,579
Grid Size (pixels):	1250 x 1250	1,579 of 1,579
Pixel Resolution:	2.00000000' x 2.00000000'	1,579 of 1,579
Pixel Type:	32-bit	1,579 of 1,579
Compression:	None	1,579 of 1,579
No Data Value:	-9999	1,579 of 1,579



1033.72 sf

1319.59 sf

1605.47 sf



Scale 1:864

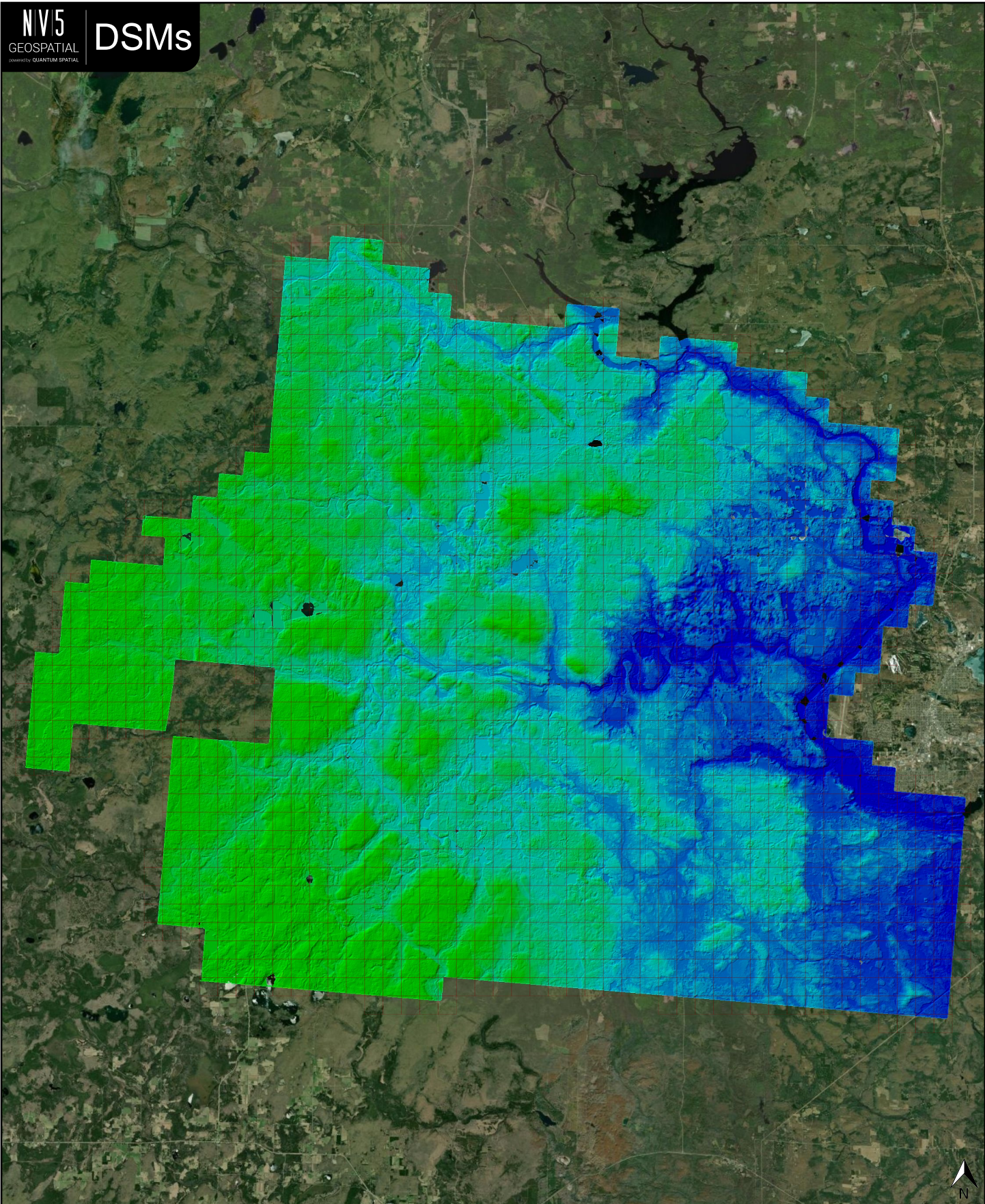
1 in = 3.38 mi

✓ General		
Folder:	E:\Work Package ID 183663\Florence Work Unit ID (209906)\other\HH	
Total # of Files:	1,579	(All Valid)
Total File Size:	9.6 GB	(10,356,004,136 bytes)

✓ Tile Sizes		
Median Tile Size:	2,500' x 2,500'	
Minimum Tile Size:	2,500' x 2,500'	
Maximum Tile Size:	2,500' x 2,500'	
X Range:	332500.00' to 462500.00'	
Y Range:	95000.00' to 205000.00'	

✓ Spatial Reference System		
Horizontal Projection	NAD83(2011) / WISCRS Florence (ftUS)	1,579 of 1,579 Tiles
Horizontal Datum	NAD83 (National Spatial Reference System 2011)	1,579 of 1,579 Tiles
Horizontal Units	US survey foot	1,579 of 1,579 Tiles
Vertical Datum	NAVD88 height (ftUS) - Geoid12B (ftUS)	1,579 of 1,579 Tiles
Vertical Units	US survey foot	1,579 of 1,579 Tiles
Vertical USGS-Compliant	Yes	1,579 of 1,579 Tiles
GDAL 2.x Compatible	Yes	1,579 of 1,579 Tiles
Geoid	Geoid12B	1,579 of 1,579 Tiles
Matches OGC Template	Yes	1,579 of 1,579 Tiles

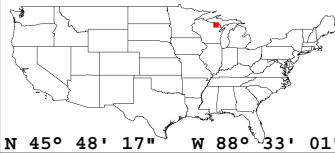
✓ Raster		
File Type:	TIF	1,579 of 1,579
Bands:	1	1,579 of 1,579
Grid Size (pixels):	1250 x 1250	1,579 of 1,579
Pixel Resolution:	2.00000000' x 2.00000000'	1,579 of 1,579
Pixel Type:	32-bit	1,579 of 1,579
Compression:	None	1,579 of 1,579
No Data Value:	-9999	1,579 of 1,579



1034.06 sf

1547.42 sf

2060.79 sf



Scale 1:864

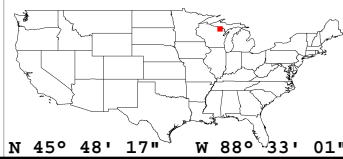
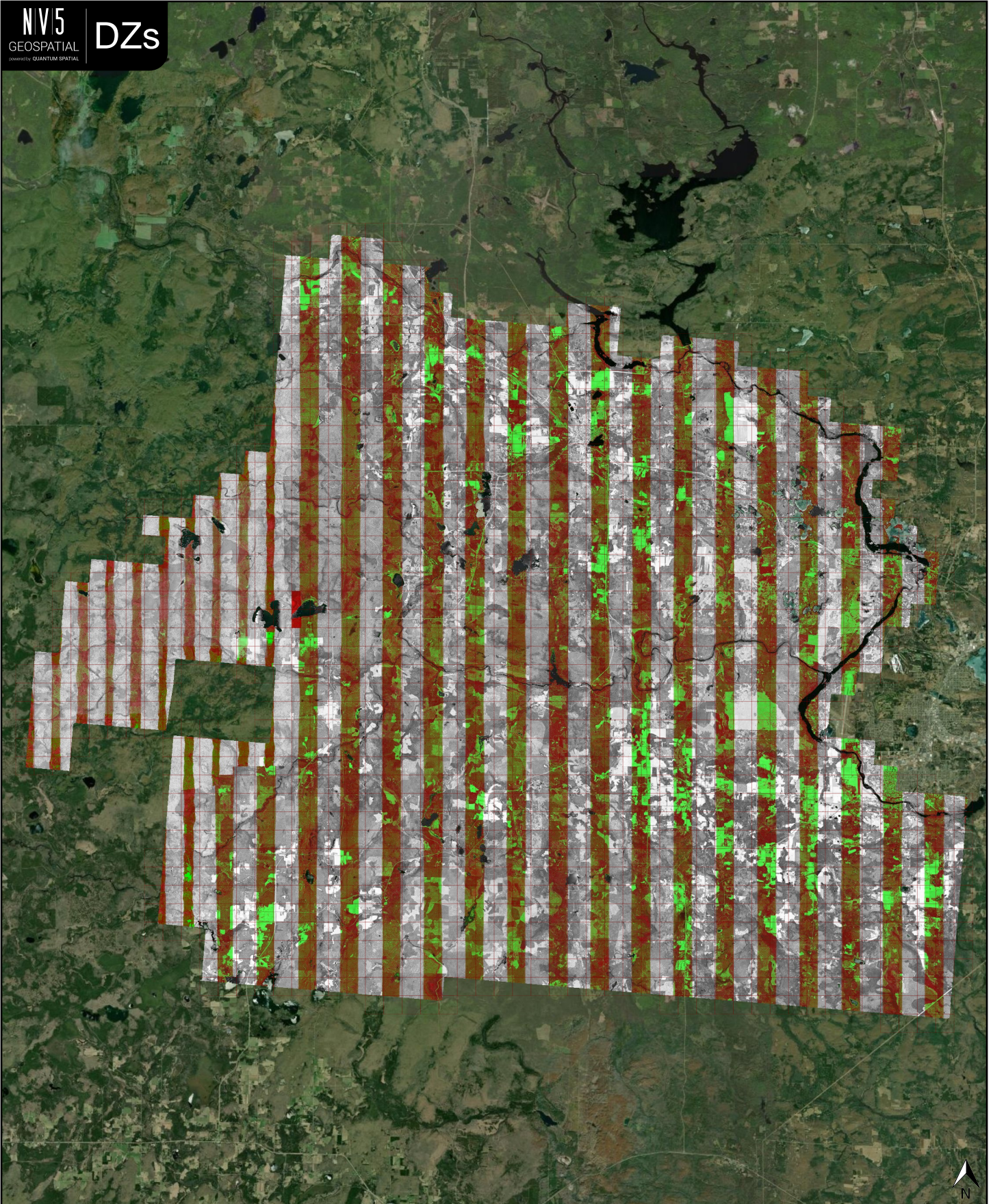
1 in = 3.38 mi

✓ General		
Folder:	E:\Work Package ID 183663\Florence Work Unit ID (209906)\metadata\spatial_metadata\height_separation_rasters	
Total # of Files:	1,579	(All Valid)
Total File Size:	7.2 GB	(7,764,213,009 bytes)

✓ Tile Sizes	
Median Tile Size:	2,500' x 2,500'
Minimum Tile Size:	2,500' x 2,500'
Maximum Tile Size:	2,500' x 2,500'
X Range:	332500.00' to 462500.00'
Y Range:	95000.00' to 205000.00'

✓ Spatial Reference System		
Horizontal Projection	NAD83(2011) / WISCRS Florence (ftUS)	1,579 of 1,579 Tiles
Horizontal Datum	NAD83 (National Spatial Reference System 2011)	1,579 of 1,579 Tiles
Horizontal Units	US survey foot	1,579 of 1,579 Tiles
Vertical Datum	NAVD88 height (ftUS) - Geoid12B (ftUS)	1,579 of 1,579 Tiles
Vertical Units	US survey foot	1,579 of 1,579 Tiles
Geoid	Geoid12B	1,579 of 1,579 Tiles

✓ Raster		
File Type:	TIF	1,579 of 1,579
Bands:	3	1,579 of 1,579
Grid Size (pixels):	1250 x 1250	1,579 of 1,579
Pixel Resolution:	2.00000000' x 2.00000000'	1,579 of 1,579
Pixel Type:	8-bit (RGB)	1,579 of 1,579
Compression:	NONE	1,579 of 1,579
No Data Value:	0	1,579 of 1,579



✓ General		
Folder:	E:\Work Package ID 183663\Florence Work Unit ID (209906)\other\Intensity	
Total # of Files:	1,579	(All Valid)
Total File Size:	2.4 GB	(2,590,155,283 bytes)

✓ Tile Sizes	
Median Tile Size:	2,500' x 2,500'
Minimum Tile Size:	2,500' x 2,500'
Maximum Tile Size:	2,500' x 2,500'
X Range:	332500.00' to 462500.00'
Y Range:	95000.00' to 205000.00'

✓ Spatial Reference System		
Horizontal Projection	NAD83(2011) / WISCRS Florence (ftUS)	1,579 of 1,579 Tiles
Horizontal Datum	NAD83 (National Spatial Reference System 2011)	1,579 of 1,579 Tiles
Horizontal Units	US survey foot	1,579 of 1,579 Tiles
Vertical Datum	NAVD88 height (ftUS) - Geoid12B (ftUS)	1,579 of 1,579 Tiles
Vertical Units	US survey foot	1,579 of 1,579 Tiles
Geoid	Geoid12B	1,579 of 1,579 Tiles

✓ Raster		
File Type:	TIF	1,579 of 1,579
Bands:	1	1,579 of 1,579
Grid Size (pixels):	1250 x 1250	1,579 of 1,579
Pixel Resolution:	2.00000000' x 2.00000000'	1,579 of 1,579
Pixel Type:	8-bit Unsigned Integer (MINISBLACK)	1,579 of 1,579
Compression:	NONE	1,579 of 1,579
No Data Value:	0	1,579 of 1,579

