

Classified Point Cloud

Deliverable 1 Summary

✓ General		
Folder:	F:\#140G0219F0026_Lot7\Sheboygan\point_cloud\tilecls	
Total # of Files:	1,595	(All Valid)
Total File Size:	226.1 GB	(242,751,697,209 bytes)

✓ Tile Sizes	
Median Tile Size:	1,000m x 1,000m
Minimum Tile Size:	99m x 99m
Maximum Tile Size:	1,000m x 1,000m
X Range:	625900.01m to 666100.00m
Y Range:	2308900.01m to 2352100.00m
Elevation Range:	0.85m to 662.43m

✓ LAS Version And Point Record Formats	
v1.4, Point Record Format 6	1,595 of 1,595 Tiles

✓ Spatial Reference System		
Horizontal Projection	NAD83(2011) / Conus Albers	1,595 of 1,595 Tiles
Horizontal Datum	NAD83 (National Spatial Reference System 2011)	1,595 of 1,595 Tiles
Horizontal Units	meter	1,595 of 1,595 Tiles
Vertical Datum	NAVD88 height	1,595 of 1,595 Tiles
Vertical Units	meter	1,595 of 1,595 Tiles
Storage Method	WKT	1,595 of 1,595 Tiles

✓ GPS Time Type	
Adjusted	1,595 of 1,595 Tiles

✓ File Source ID Equals 0	
Yes	1,595 of 1,595 Tiles

✓ VLR/EVLR Reserved Equals 0	
Yes	4,767 of 4,767 Records

✓ Unnecessary Bytes At End Of File	
No	1,595 of 1,595 Tiles

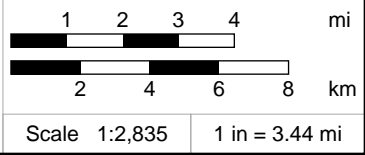
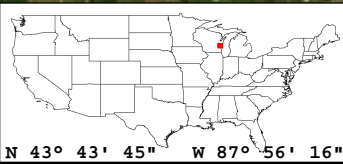
✓ Legacy Point Count Check	
Zero	1,595 of 1,595 Tiles

✓ System Identifier	
MERGE	1,595 of 1,595 Tiles

✓ Generating Software	
QSI LiDAR Suite	1,595 of 1,595 Tiles



Classified LAS Tiles (1,595)



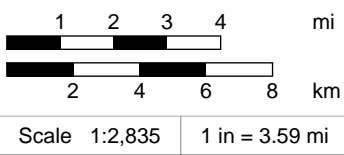
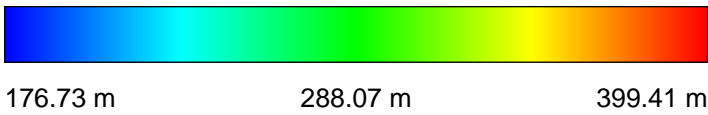
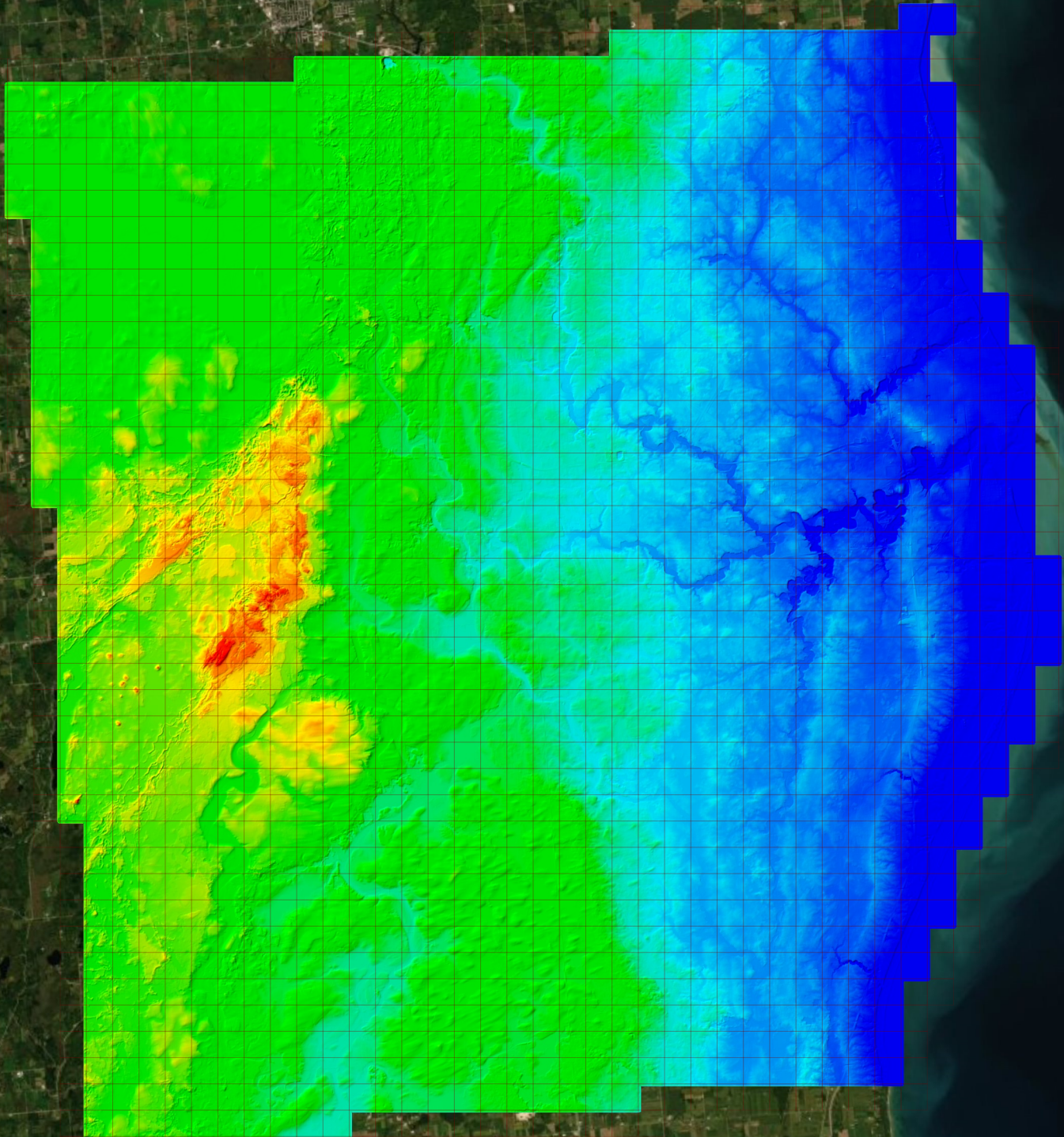
✓ General		
Folder:	F:\#140G0219F0026_Lot7\Sheboygan\bare_earth\be_rasters	
Total # of Files:	1,595	(All Valid)
Total File Size:	6.2 GB	(6,708,483,870 bytes)

✓ Tile Sizes		
Median Tile Size:	1,000m x 1,000m	
Minimum Tile Size:	1,000m x 1,000m	
Maximum Tile Size:	1,000m x 1,000m	
X Range:	625000.00m to 667000.00m	
Y Range:	2308000.00m to 2353000.00m	
Elevation Range:	176.54m to 400.50m	

✓ Spatial Reference System (Method: Eprj_MapProjection842)		
Horizontal Projection	NAD_1983_2011_Contiguous_USA_Albers	1,595 of 1,595 Tiles
Horizontal Datum	D_NAD_1983_2011	1,595 of 1,595 Tiles
Horizontal Units	Meter	1,595 of 1,595 Tiles
Vertical Datum	NAVD88 height	1,595 of 1,595 Tiles
Vertical Units	Meter	1,595 of 1,595 Tiles

✓ Spatial Reference System (Method: Eprj_ProParameters)		
Zone	Albers_Conical_Equal_Area 0	1,595 of 1,595 Tiles
Datum	D_NAD_1983_2011	1,595 of 1,595 Tiles
Spheroid	GRS_1980	1,595 of 1,595 Tiles

✓ Raster		
File Type:	IMG	1,595 of 1,595
Bands:	1	1,595 of 1,595
Grid Size (pixels):	1000 x 1000	1,595 of 1,595
Pixel Resolution:	1.000000000m x 1.000000000m	1,595 of 1,595
Pixel Type:	32-bit Floating Point	1,595 of 1,595
Compression:	None	1,595 of 1,595
No Data Value:	-3.402823E+38	1,595 of 1,595



✓ General		
Folder:	F:\#140G0219F0026_Lot7\Sheboygan\other\Intensity_Images	
Total # of Files:	1,595	(All Valid)
Total File Size:	2.1 GB	(2,276,805,080 bytes)

✓ Tile Sizes		
Median Tile Size:	1,000m x 1,000m	
Minimum Tile Size:	1,000m x 1,000m	
Maximum Tile Size:	1,000m x 1,000m	
X Range:	625000.00m to 667000.00m	
Y Range:	2308000.00m to 2353000.00m	

✓ Spatial Reference System		
Horizontal Projection	NAD_1983_2011_Contiguous_USA_Albers	1,595 of 1,595 Tiles
Horizontal Datum	NAD_1983_2011	1,595 of 1,595 Tiles
Horizontal Units	Meter	1,595 of 1,595 Tiles
Vertical Datum	NAVD88 height	1,595 of 1,595 Tiles
Vertical Units	Meter	1,595 of 1,595 Tiles

✓ Raster		
File Type:	TIF	1,595 of 1,595
Bands:	1	1,595 of 1,595
Grid Size (pixels):	1000 x 1000	1,595 of 1,595
Pixel Resolution:	1.00000000m x 1.00000000m	1,595 of 1,595
Pixel Type:	8-bit Unsigned Integer (MINISBLACK)	1,595 of 1,595
Compression:	NONE	1,595 of 1,595
No Data Value:	NONE	1,595 of 1,595

