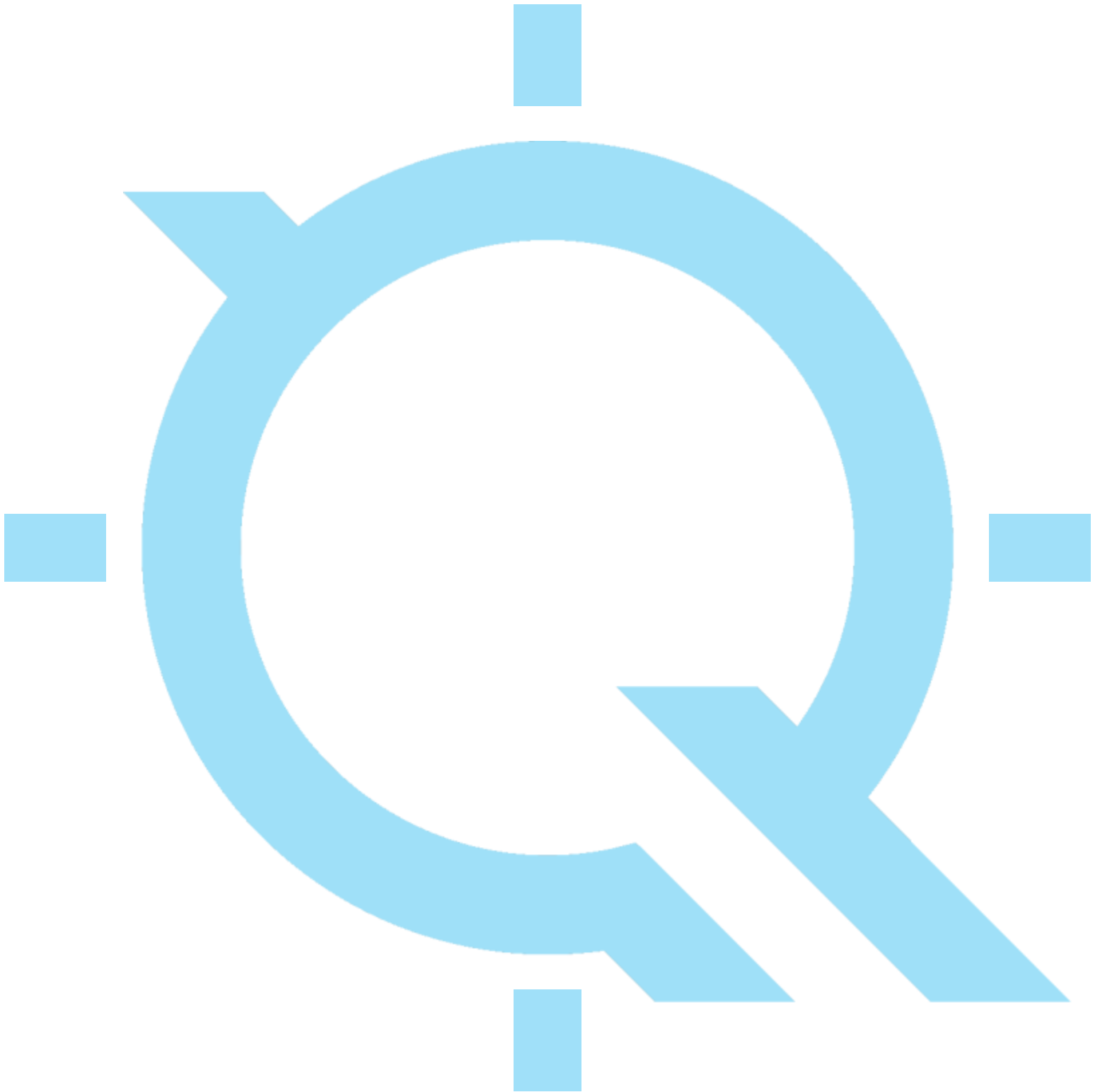


FOCUS on Accuracy



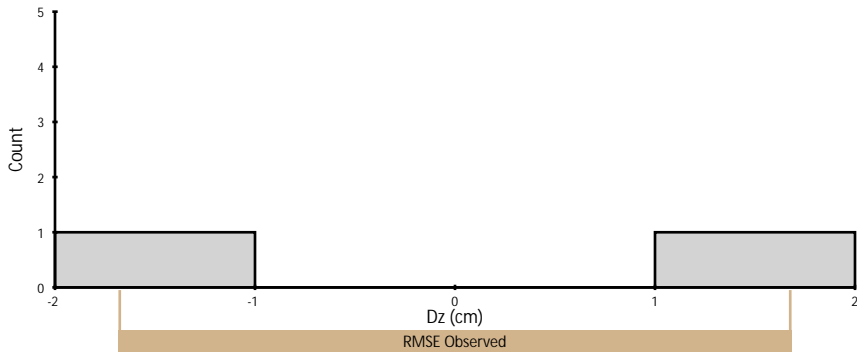
#140G0219F0026 Oshkosh Lot 6
LiDAR Accuracy Assessment

Table of Contents

Project Summary	1
Type Maps	2
Control Point Breakdown	3
Appendix - Individual Control Point Summaries	A1 - A8

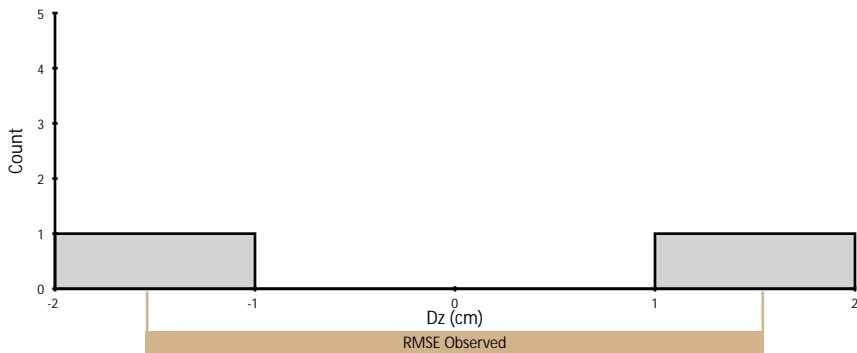
Project Summary

Nonvegetated Vertical Accuracy (Point Cloud)



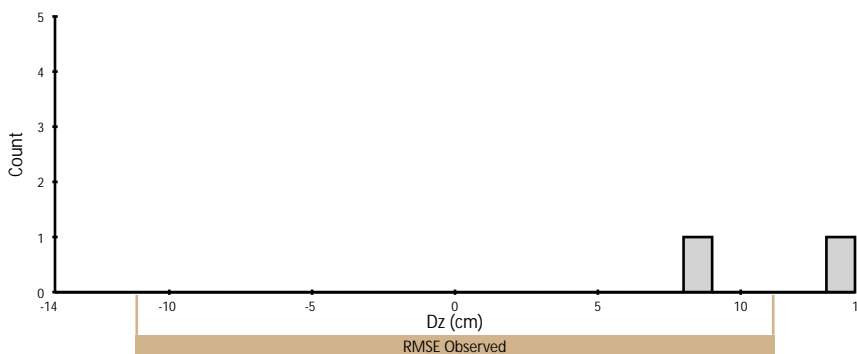
	Observed	Required
RMSE	1.68 cm	10.00 cm
95% Confidence Level	3.30 cm	19.60 cm
Mean	-0.21 cm	N/A
Count	2	N/A

Nonvegetated Vertical Accuracy (DEM)



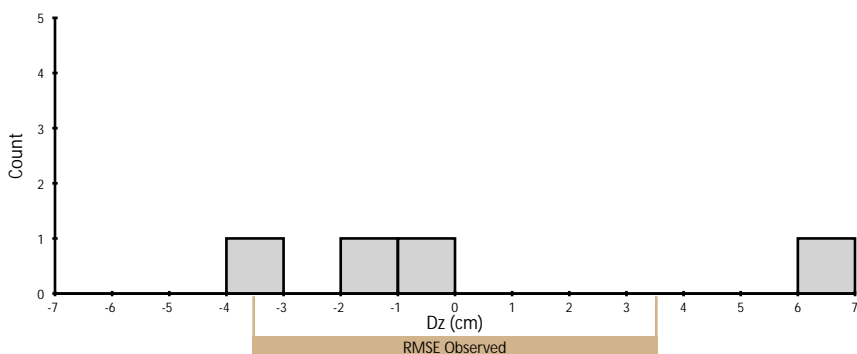
	Observed	Required
RMSE	1.55 cm	N/A
95% Confidence Level	3.03 cm	19.60 cm
Mean	-0.13 cm	N/A
Count	2	N/A

Vegetated Vertical Accuracy (DEM)



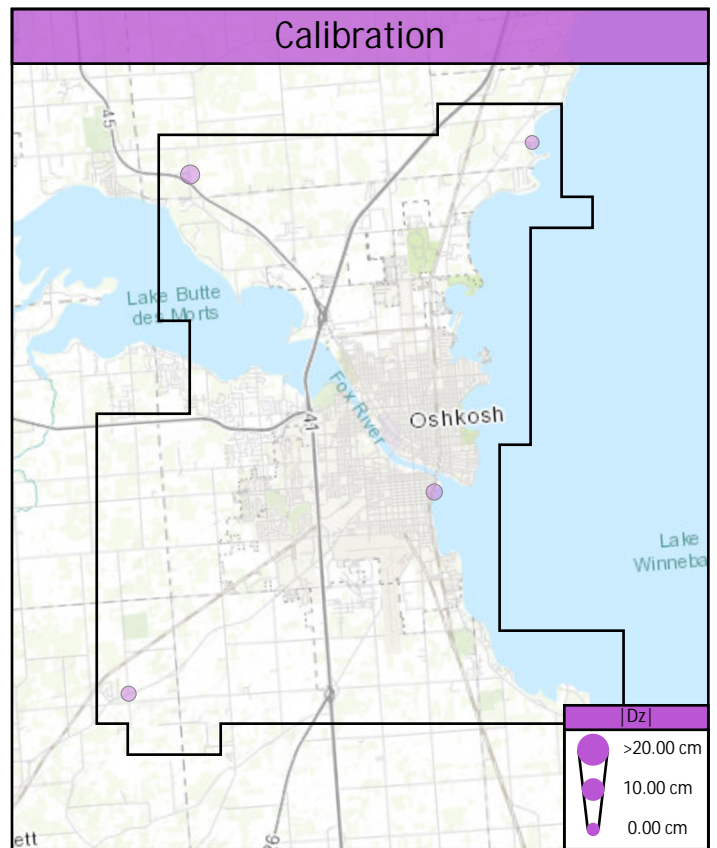
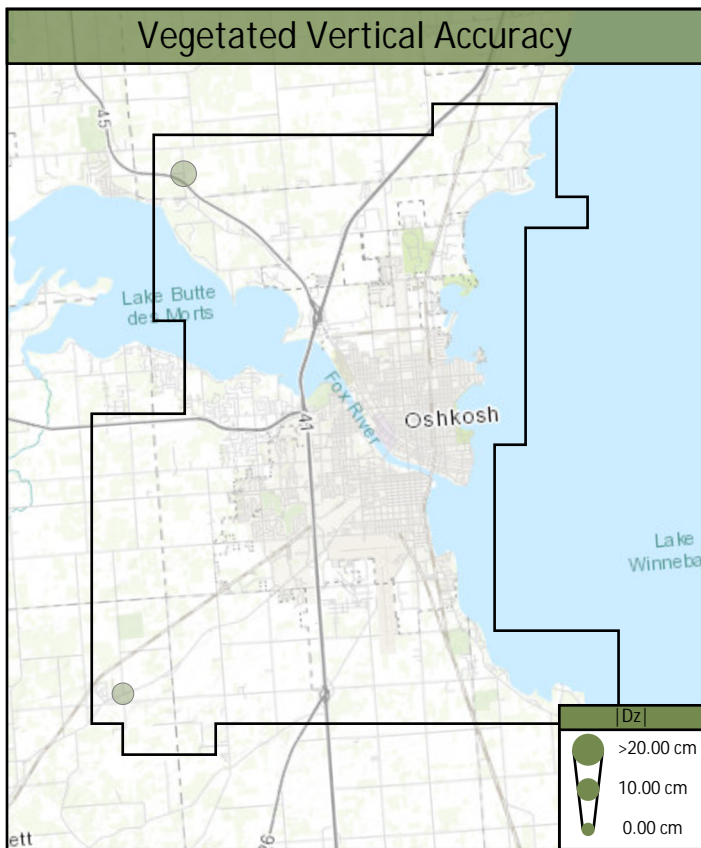
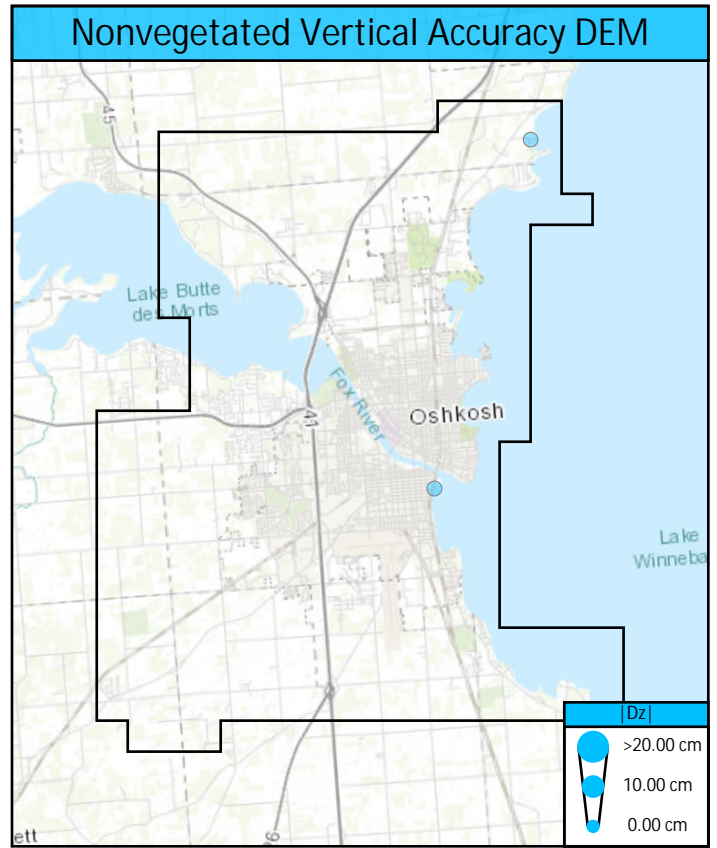
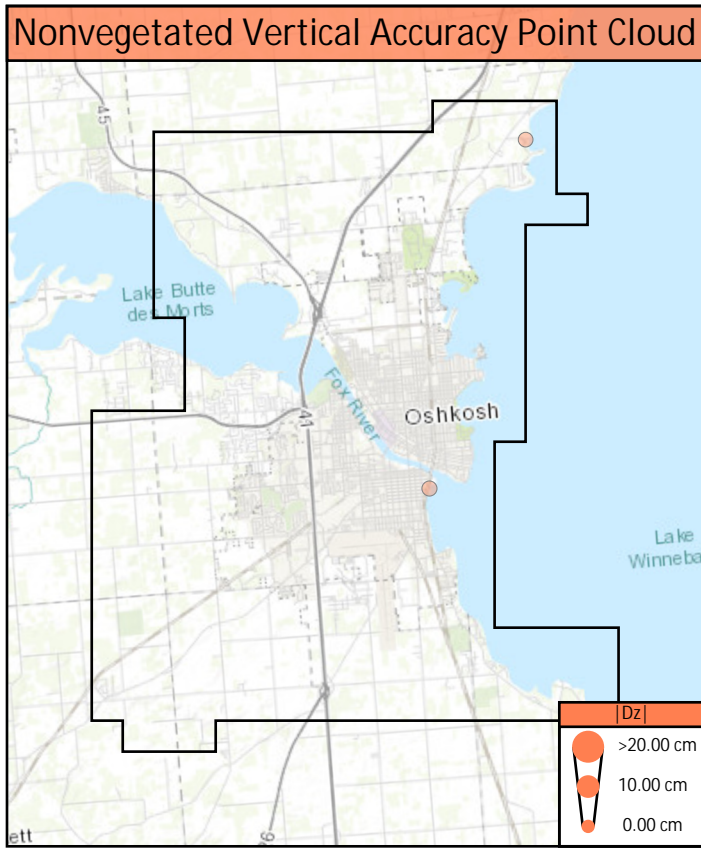
	Observed	Required
RMSE	11.18 cm	N/A
95th Percentile	12.91 cm	29.40 cm
Mean	10.98 cm	N/A
Count	2	N/A

Calibration (Point Cloud)



	Observed	Required
RMSE	3.55 cm	N/A
Mean	0.14 cm	N/A
Count	4	N/A

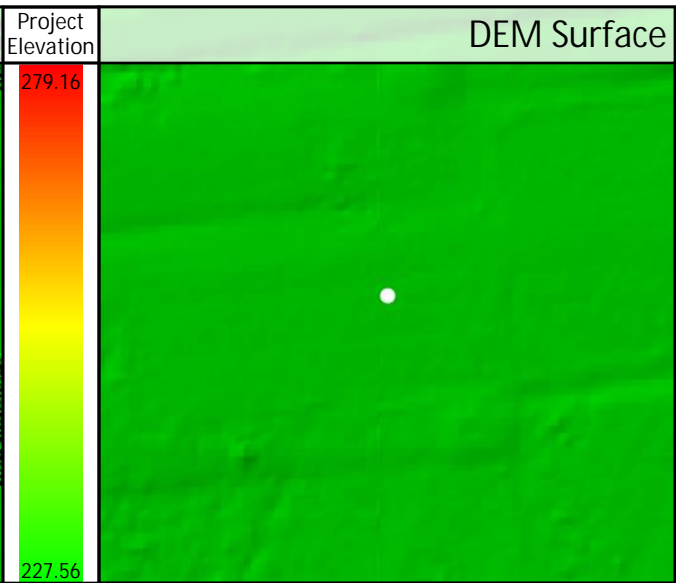
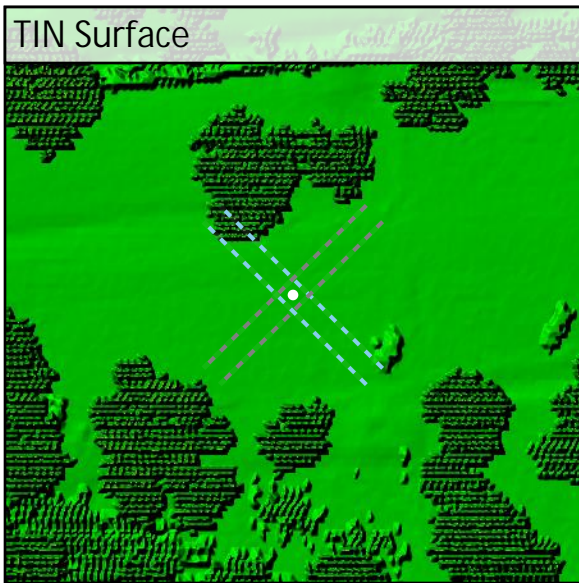
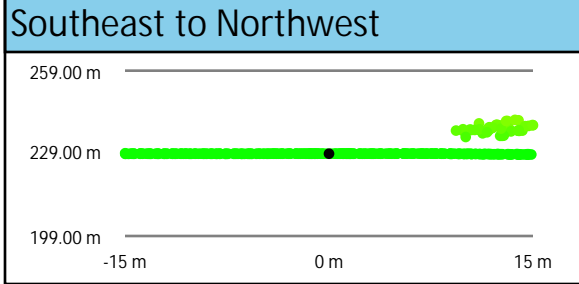
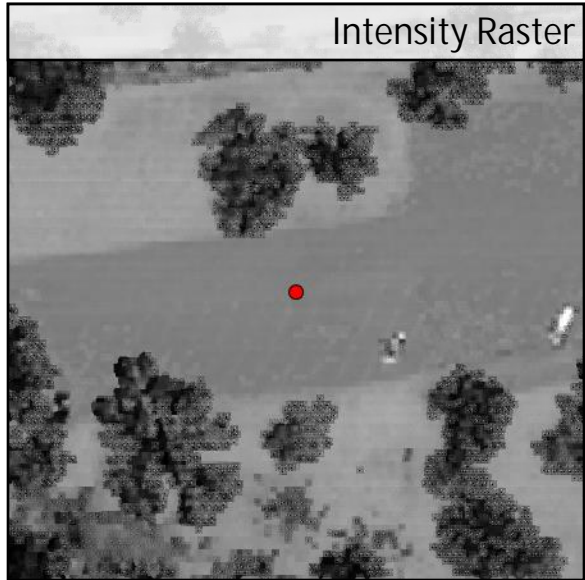
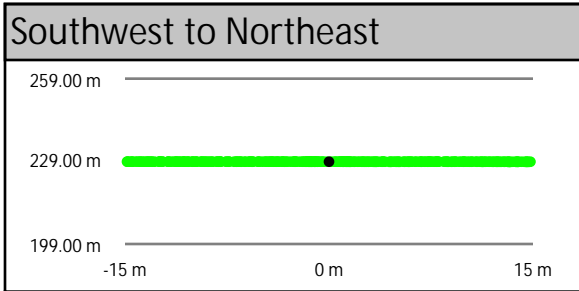
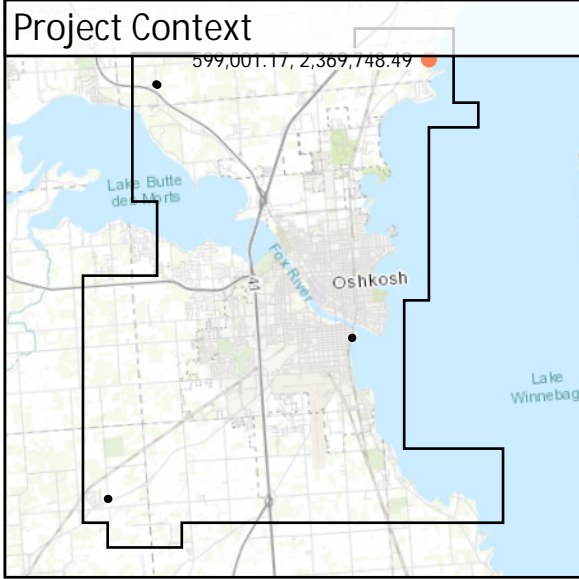
Control Point Locations



Control Point Breakdown

Point	Type	All Points TIN Dz	DEM Dz	Ground Density	Nearest Ground	Slope
UA37	NVA	1.46 cm	1.41 cm	2.79 ppsm	0.17 m	0.14°
UA38	NVA	-1.88 cm	-1.67 cm	3.15 ppsm	0.25 m	0.53°
TW46	VVA	N/A	13.12 cm	5.02 ppsm	0.10 m	0.56°
TW47	VVA	N/A	8.83 cm	5.02 ppsm	0.06 m	1.09°
CA101	CAL	6.08 cm	5.71 cm	4.88 ppsm	0.50 m	0.18°
CA102	CAL	-0.59 cm	-0.02 cm	2.86 ppsm	0.29 m	0.56°
CA103	CAL	-3.10 cm	-2.33 cm	2.94 ppsm	0.06 m	0.49°
CA104	CAL	-1.85 cm	-1.20 cm	5.02 ppsm	0.23 m	1.15°

<h1>UA37</h1>	Known Z	228.87 m	Point Density	2.79 ppsm
	DEM Dz	0.01 m	Ground Density	2.79 ppsm
	All Points TIN Dz	0.01 m	Slope	0.14 °

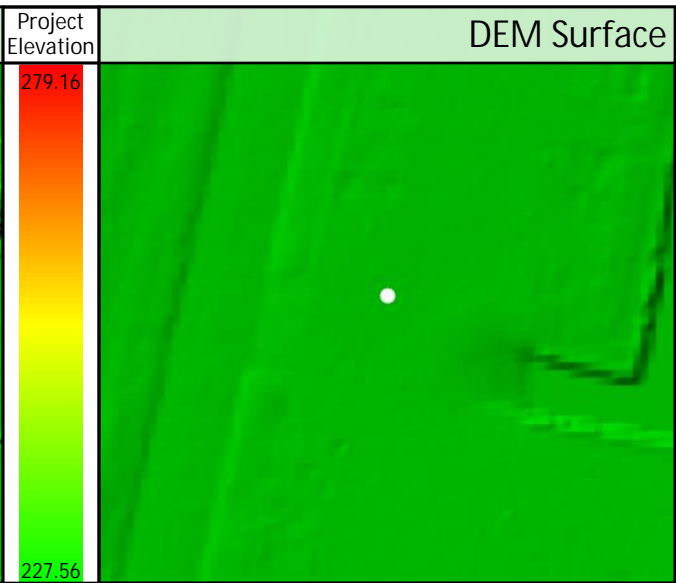
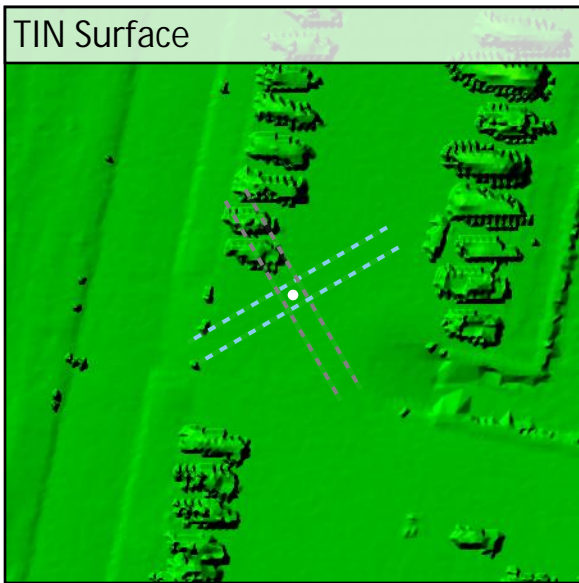
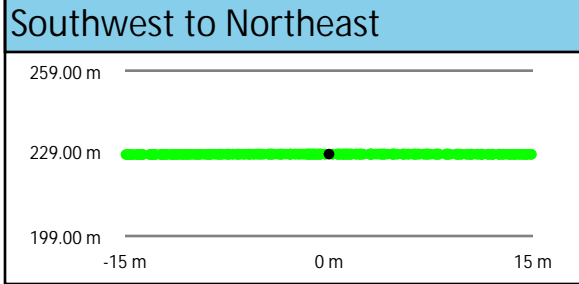
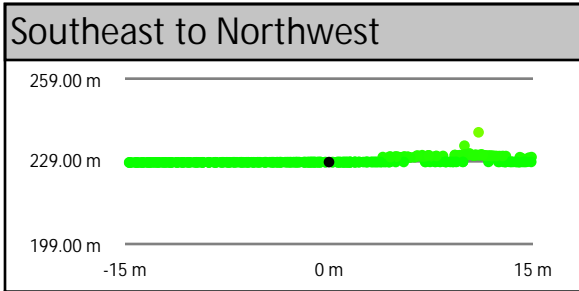
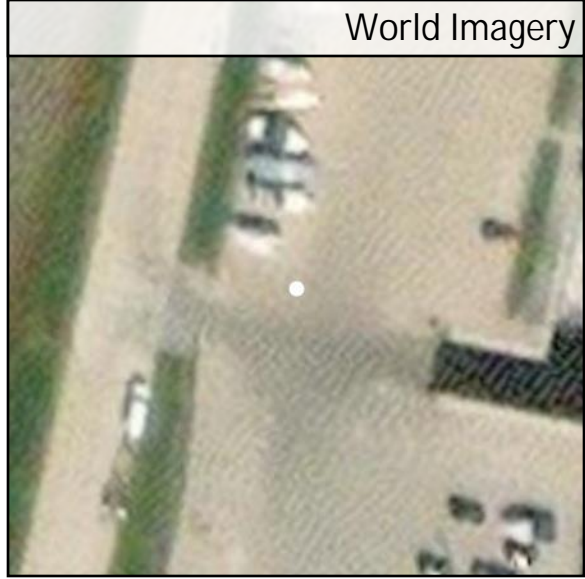
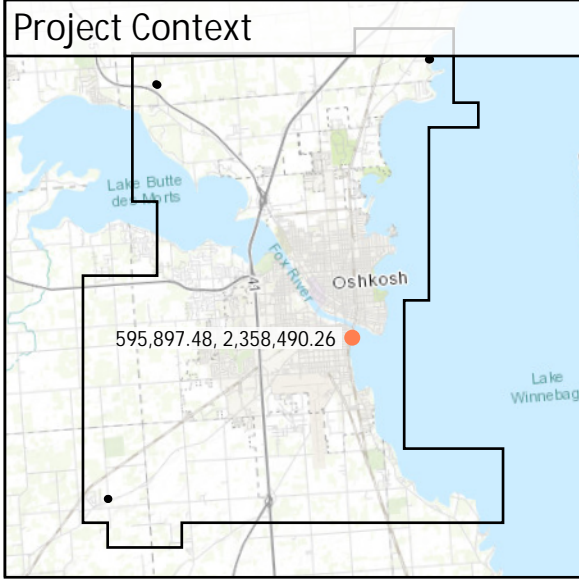


DEM Dz +0.01 m

NVA - UA37

All Points TIN Dz +0.01 m

UA38	Known Z	228.72 m	Point Density	3.15 ppsm
	DEM Dz	-0.02 m	Ground Density	3.15 ppsm
	All Points TIN Dz	-0.02 m	Slope	0.53 °

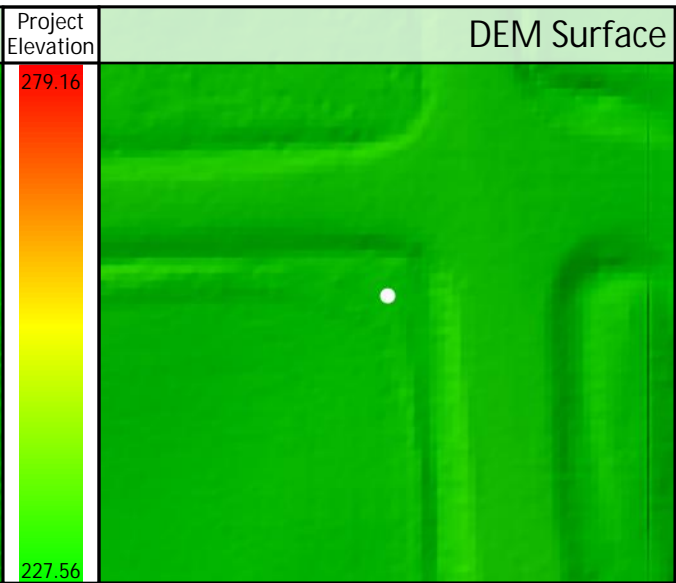
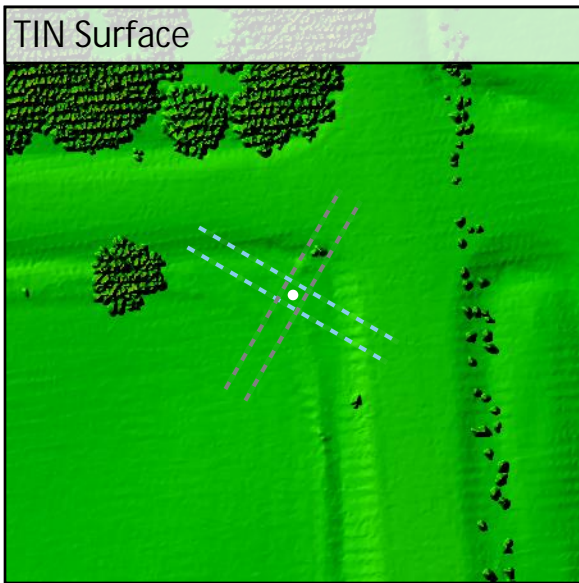
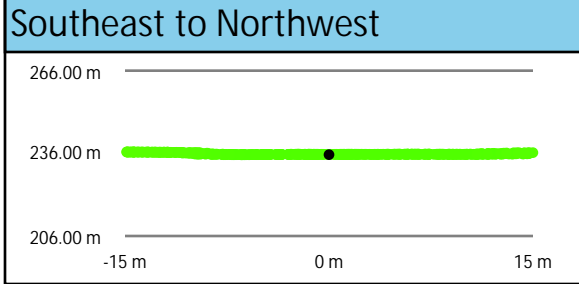
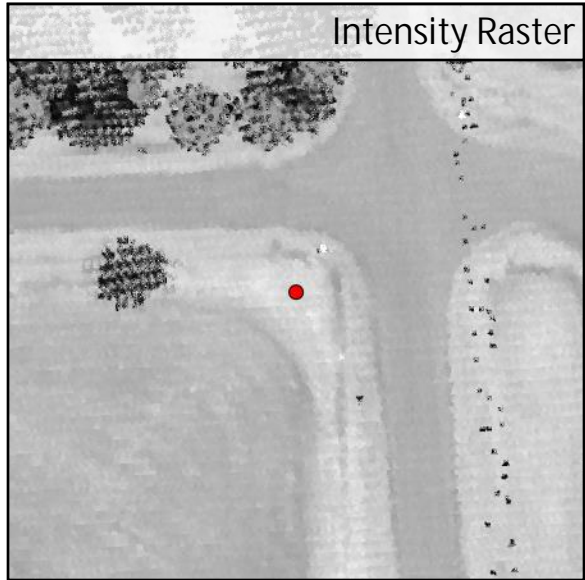
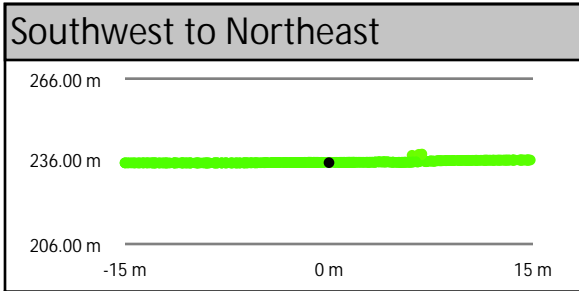
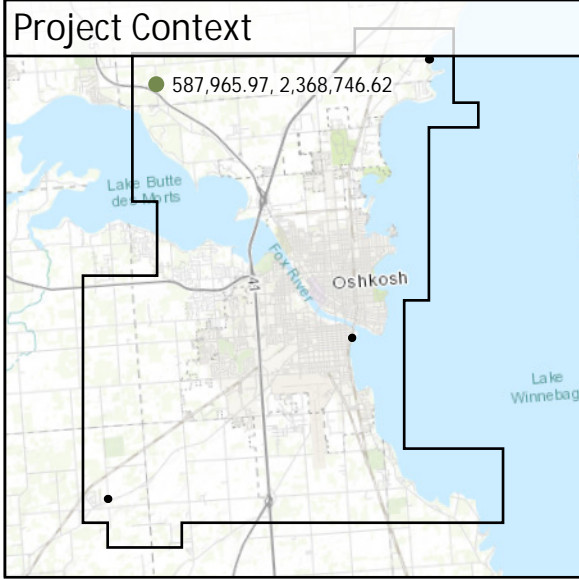


DEM Dz -0.02 m

NVA - UA38

All Points TIN Dz -0.02 m

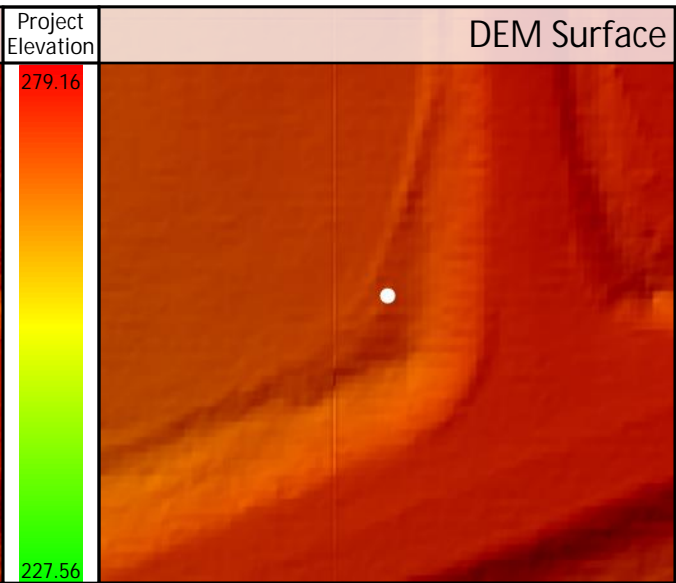
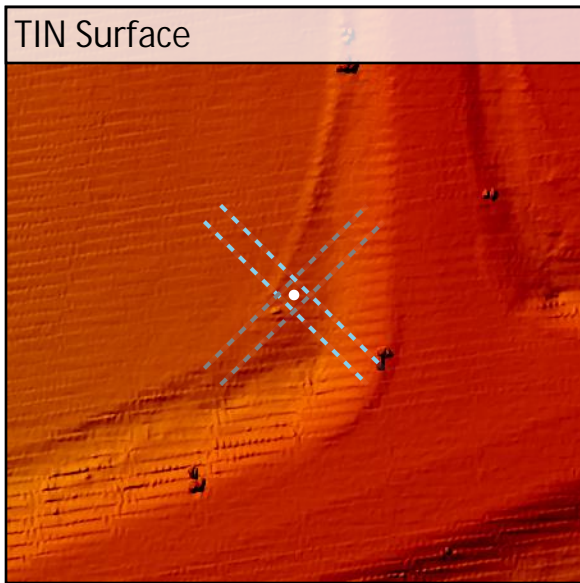
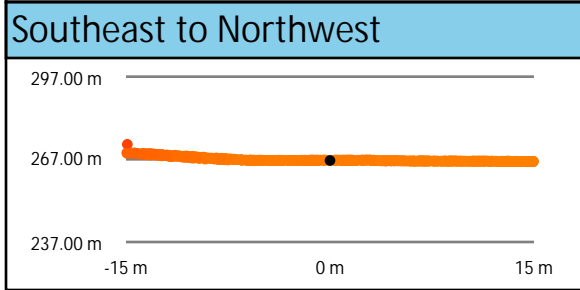
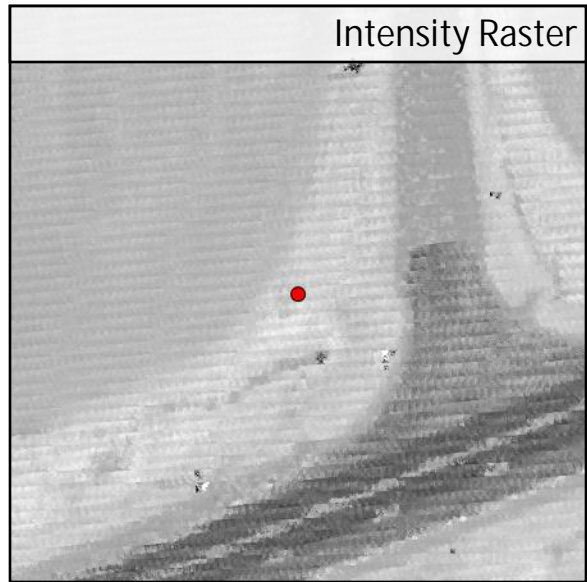
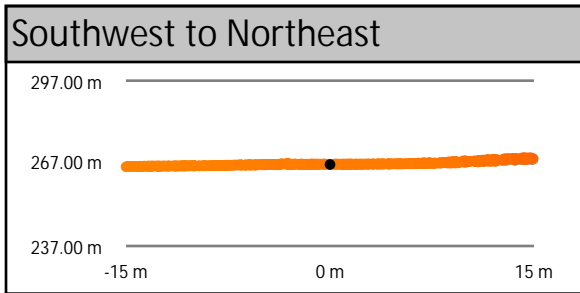
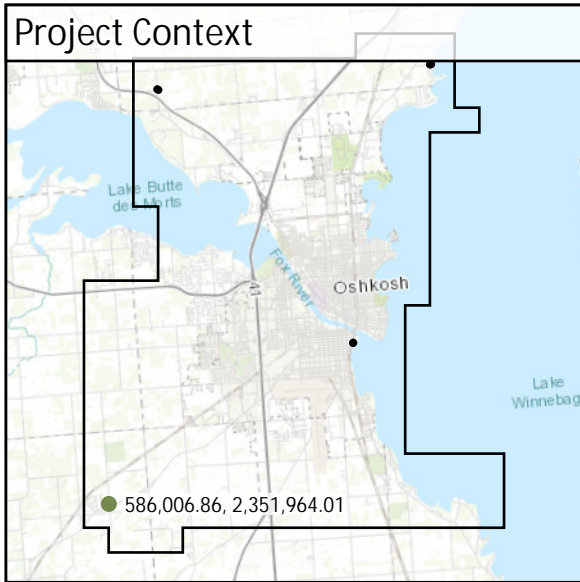
TW46	Known Z	235.52 m	Point Density	5.02 ppsm
	DEM Dz	0.13 m	Ground Density	5.02 ppsm
	All Points TIN Dz	N/A	Slope	0.56 °



DEM Dz +0.13 m

VWA - TW46

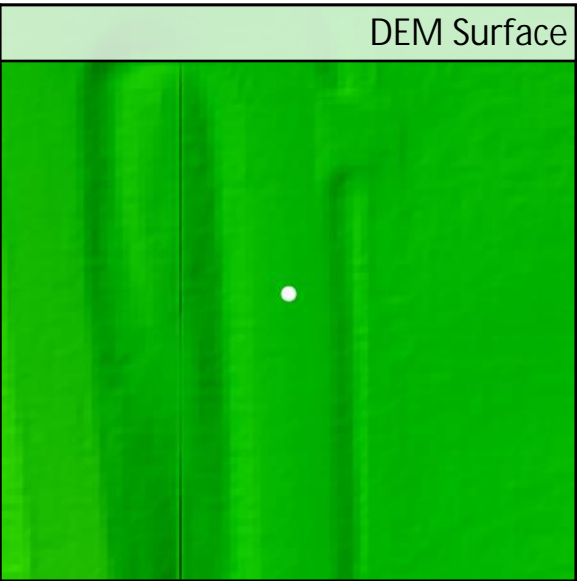
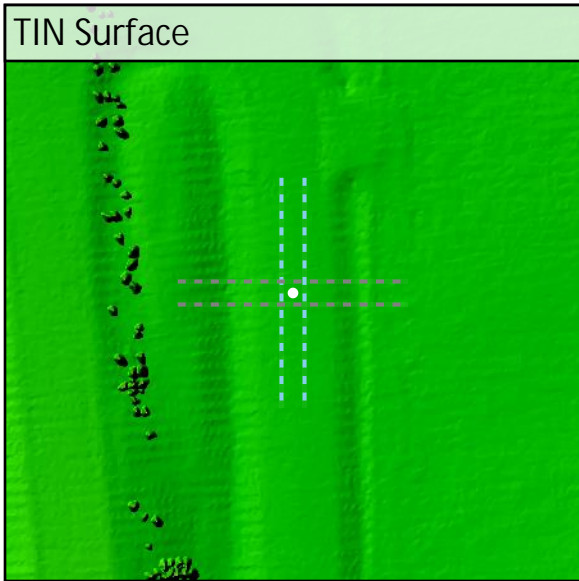
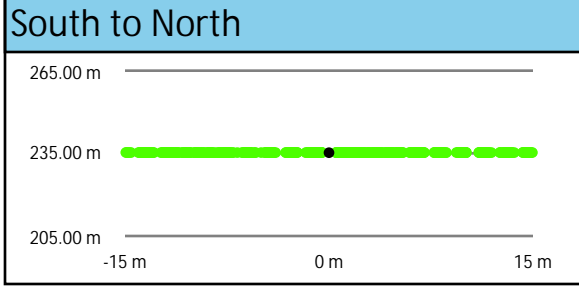
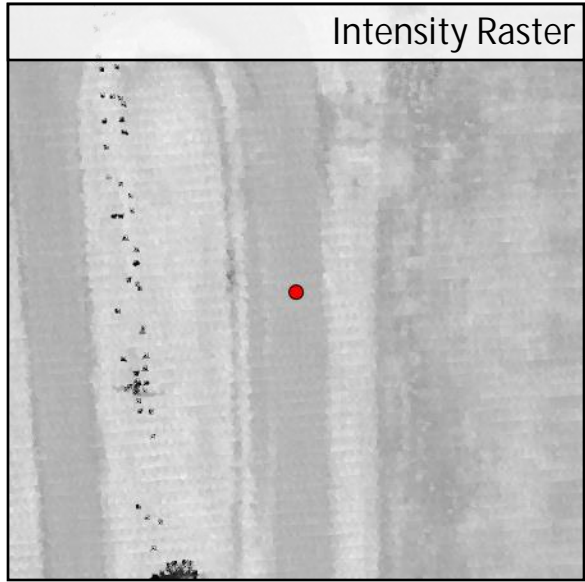
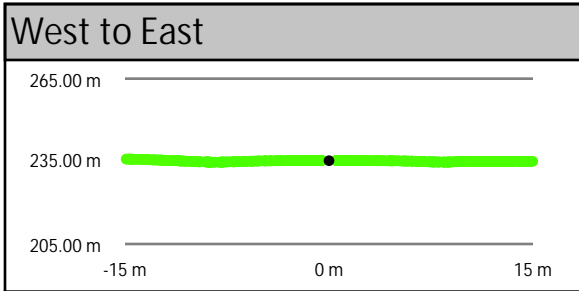
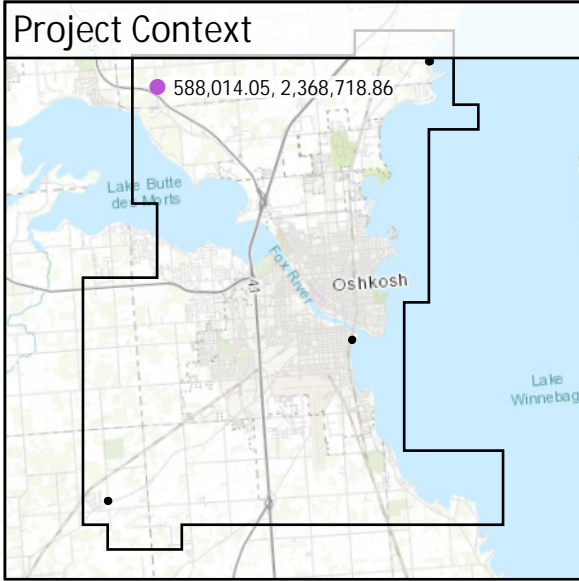
TW47	Known Z	266.57 m	Point Density	5.02 ppsm
	DEM Dz	0.09 m	Ground Density	5.02 ppsm
	All Points TIN Dz	N/A	Slope	1.09 °



DEM Dz +0.09 m

VVA - TW47

CA101	Known Z	235.23 m	Point Density	4.88 ppsm
	DEM Dz	0.06 m	Ground Density	4.88 ppsm
	All Points TIN Dz	0.06 m	Slope	0.18 °

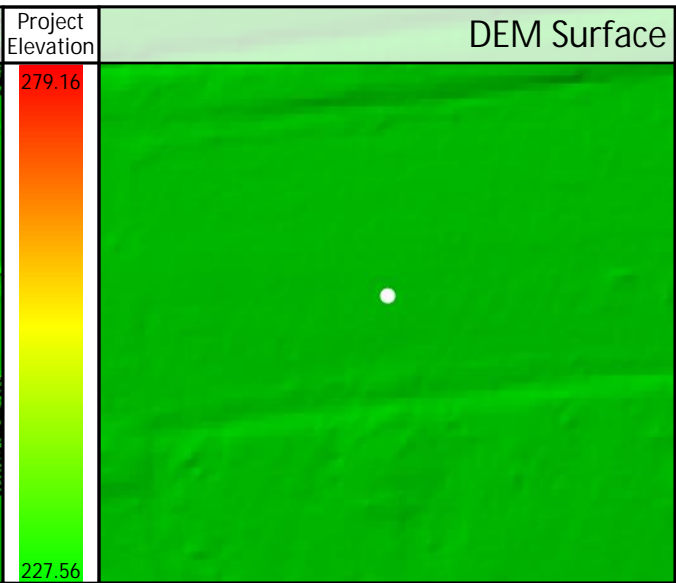
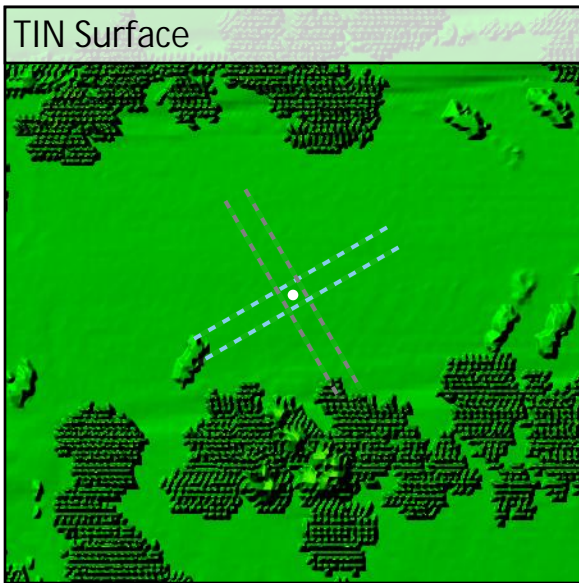
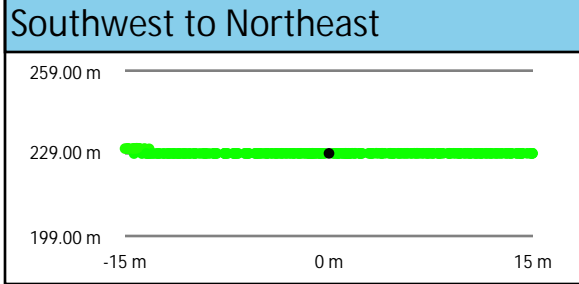
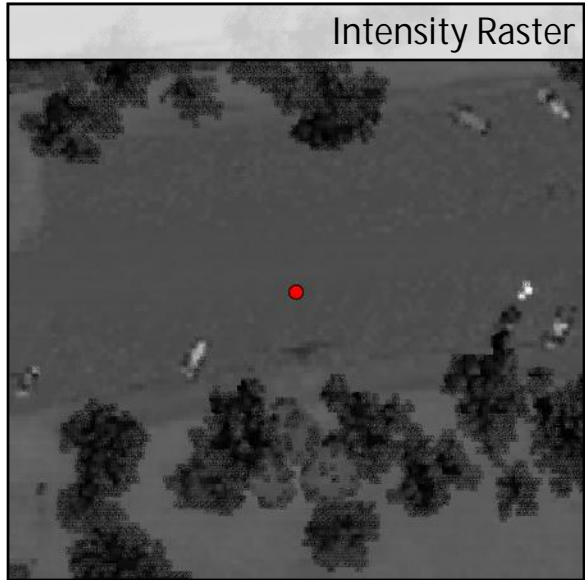
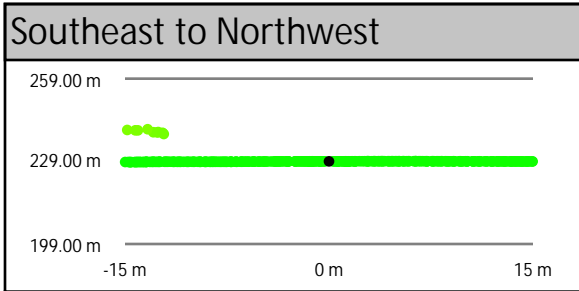
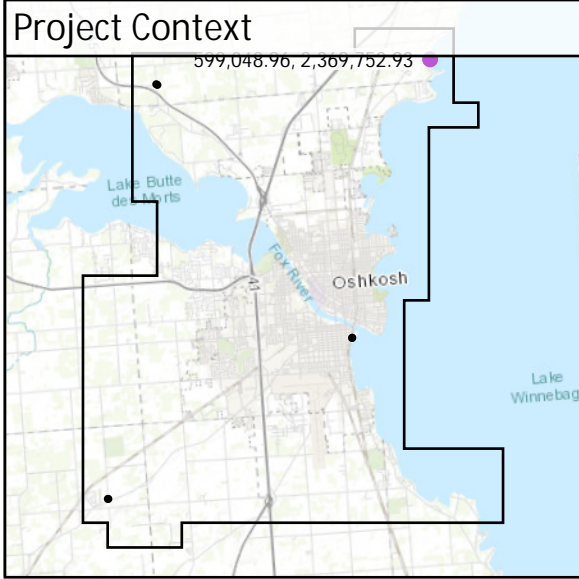


DEM Dz +0.06 m

CAL - CA101

All Points TIN Dz +0.06 m

CA102	Known Z	228.99 m	Point Density	2.86 ppsm
	DEM Dz	0.00 m	Ground Density	2.86 ppsm
	All Points TIN Dz	-0.01 m	Slope	0.56 °

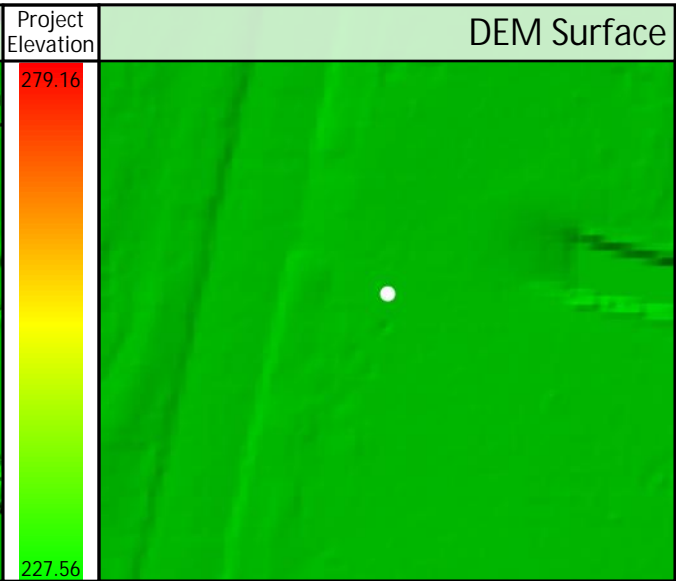
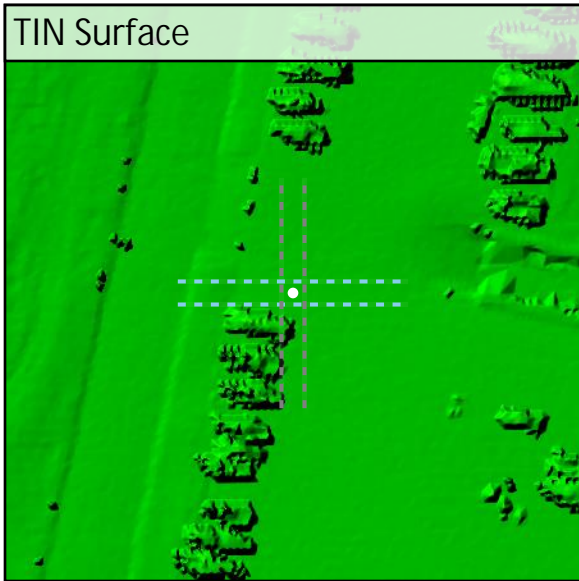
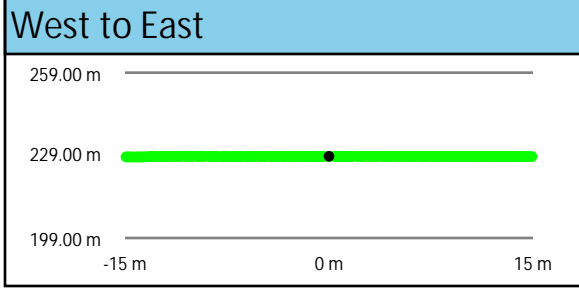
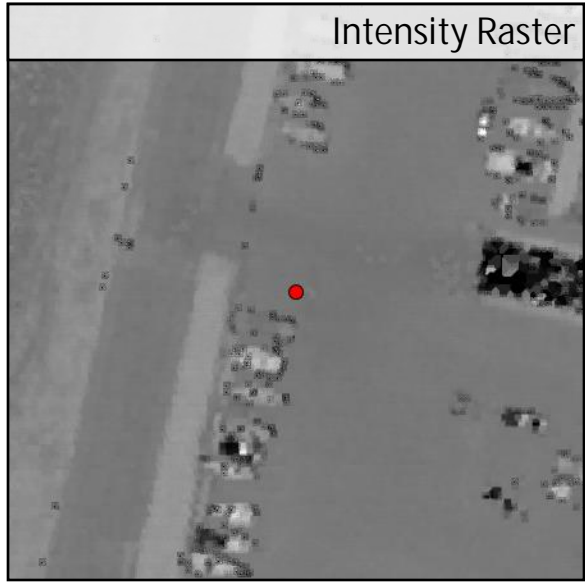
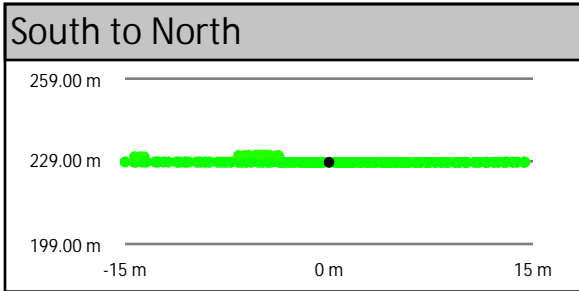
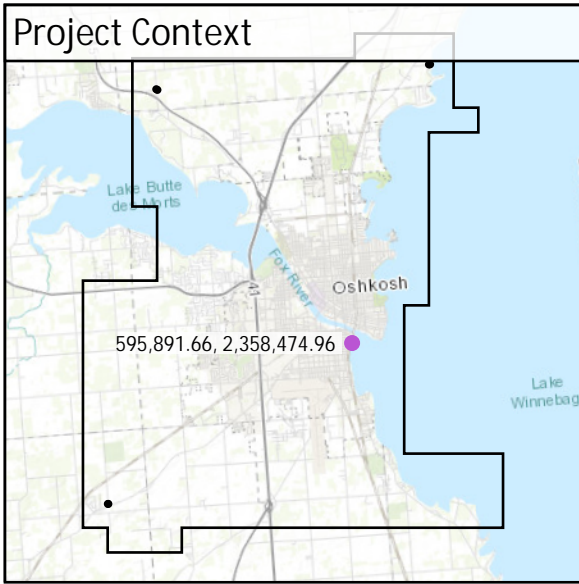


DEM Dz 0.00 m

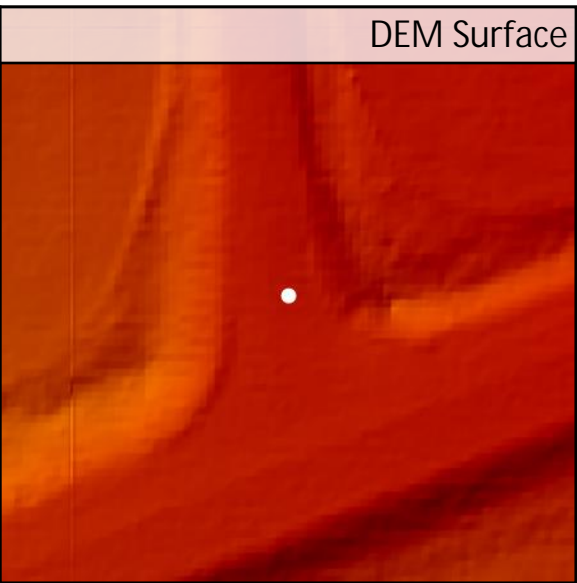
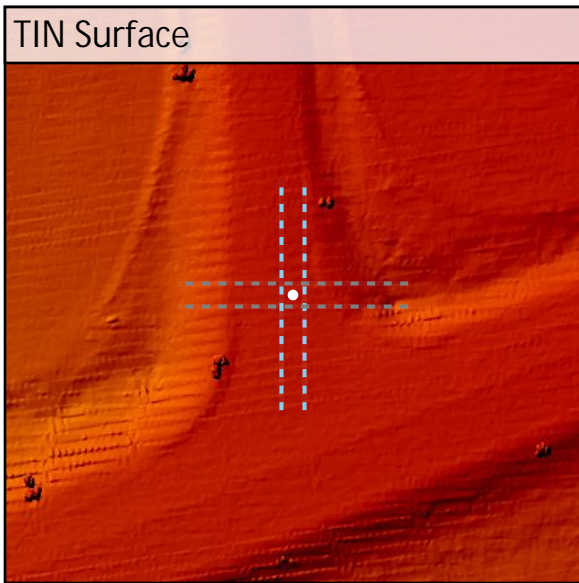
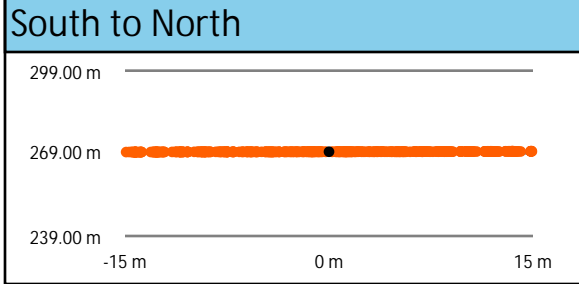
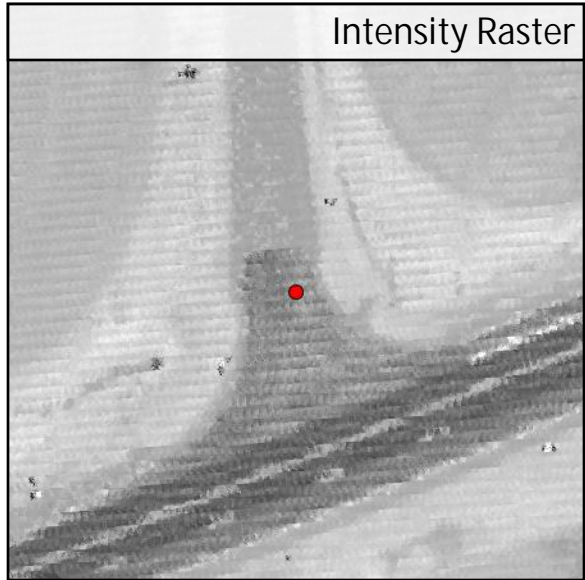
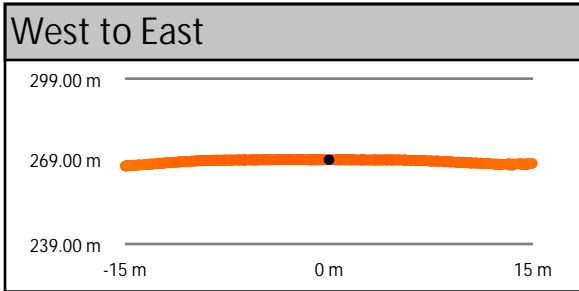
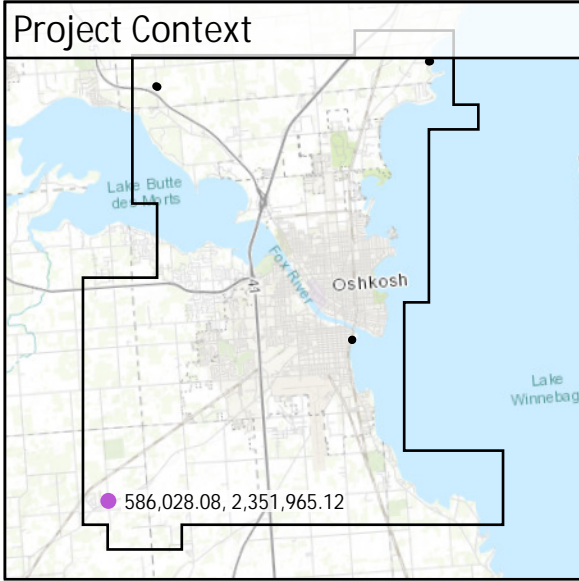
CAL - CA102

All Points TIN Dz -0.01 m

CA103	Known Z	228.65 m	Point Density	2.94 ppsm
	DEM Dz	-0.02 m	Ground Density	2.94 ppsm
	All Points TIN Dz	-0.03 m	Slope	0.49 °



CA104	Known Z	269.58 m	Point Density	5.02 ppsm
	DEM Dz	-0.01 m	Ground Density	5.02 ppsm
	All Points TIN Dz	-0.02 m	Slope	1.15 °



DEM Dz -0.01 m

CAL - CA104

All Points TIN Dz -0.02 m