

FOCUS on Accuracy

Wisconsin_8_County_LiDAR

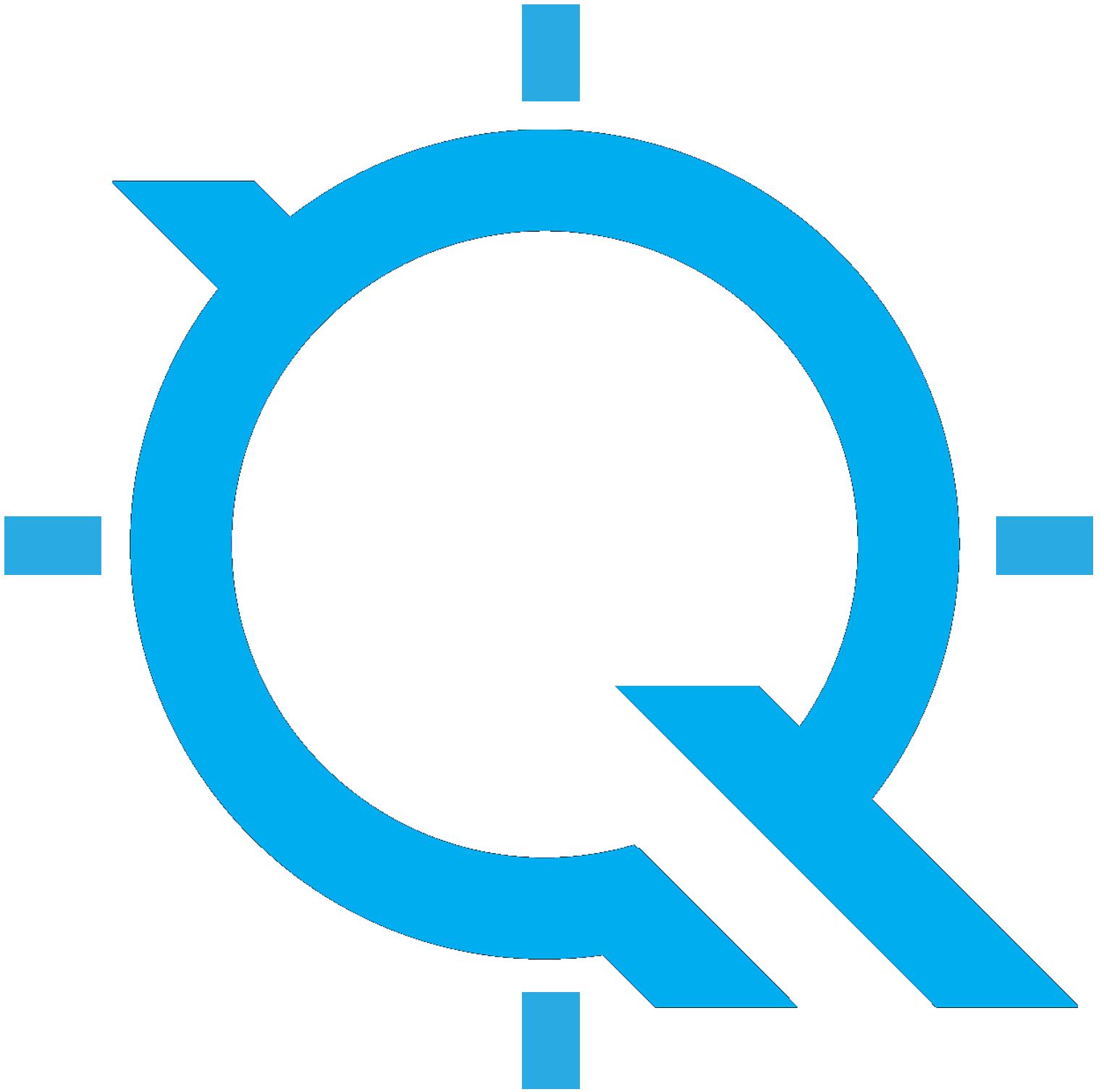
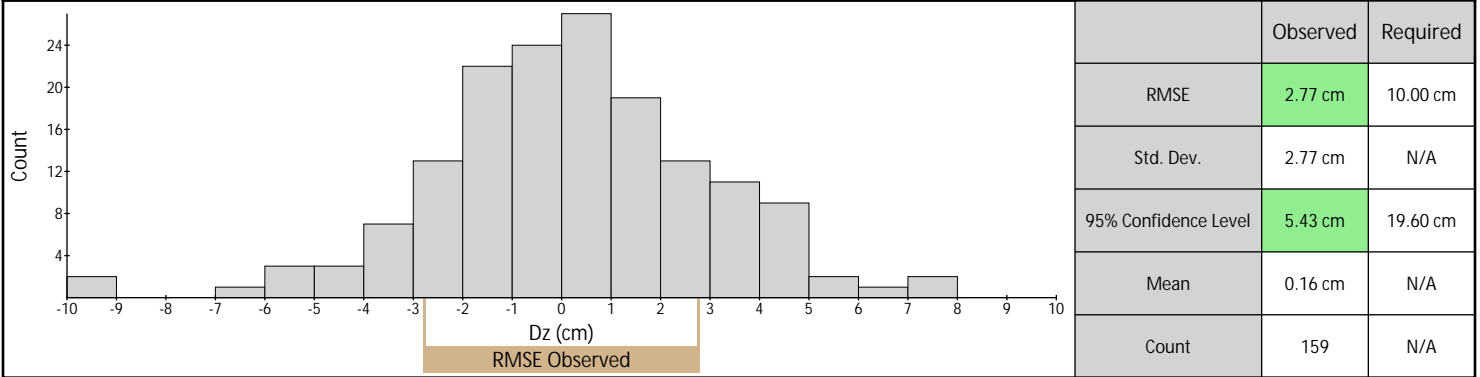


Table of Contents

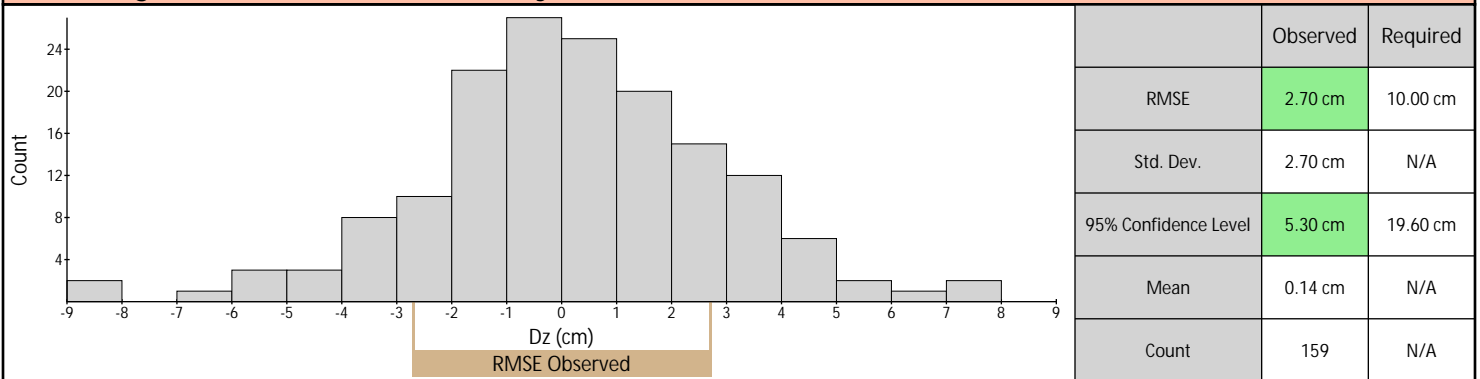
Vertical Accuracy Assessment	3
Control Point Locations	5
Control Point Breakdown	7

Vertical Accuracy Assessment

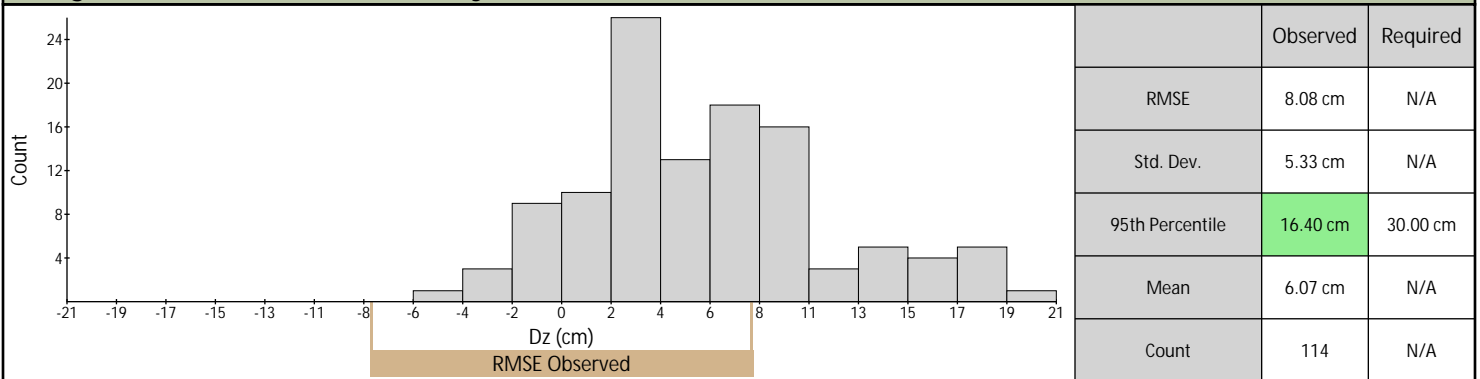
Nonvegetated Vertical Accuracy (Ground LAS)



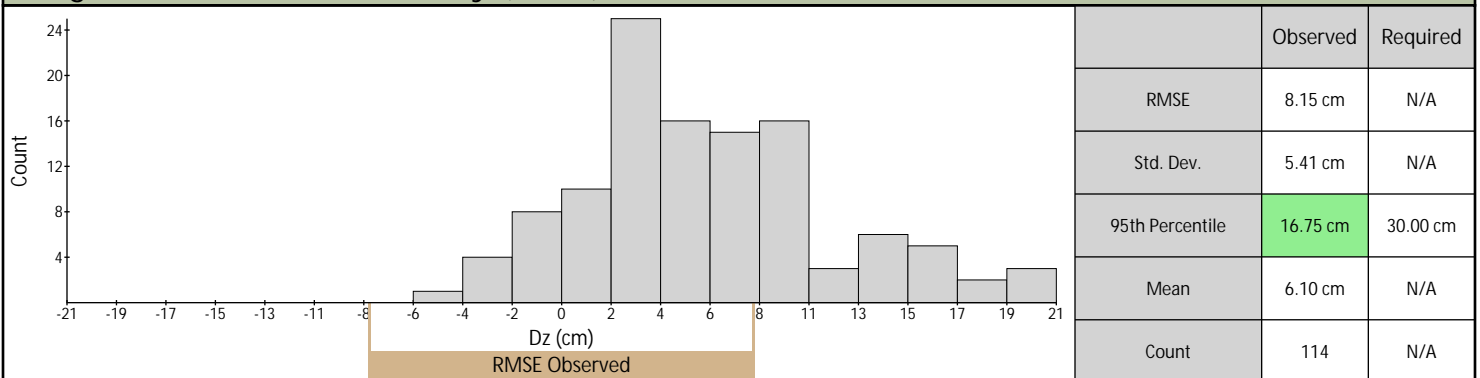
Nonvegetated Vertical Accuracy (DEM)



Vegetated Vertical Accuracy (Ground LAS)

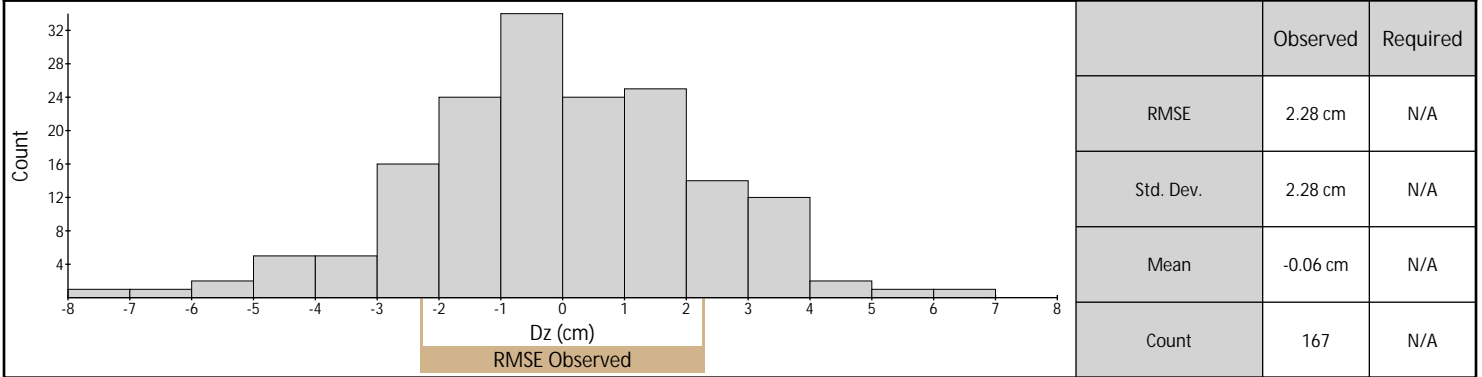


Vegetated Vertical Accuracy (DEM)

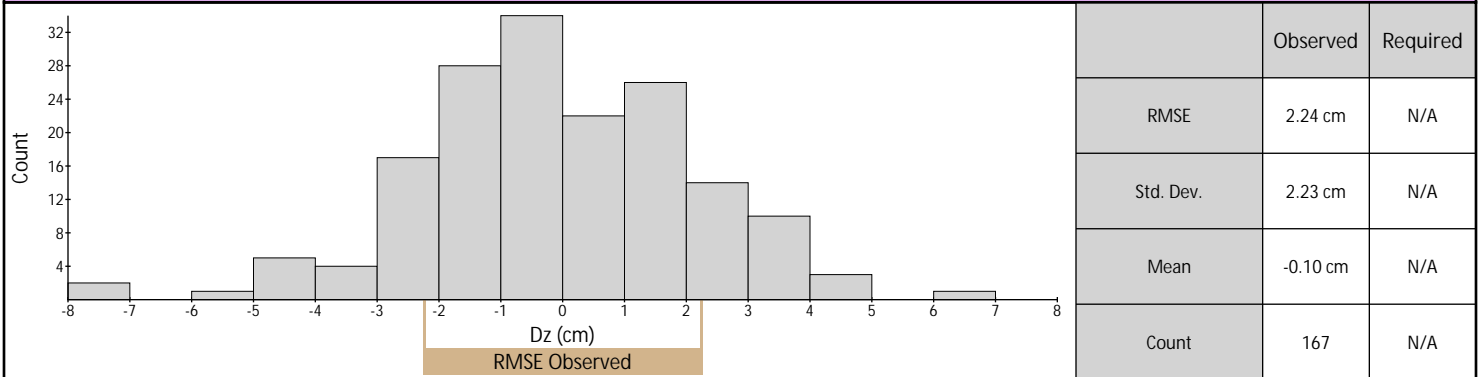


Vertical Accuracy Assessment (continued)

Calibration (Ground LAS)

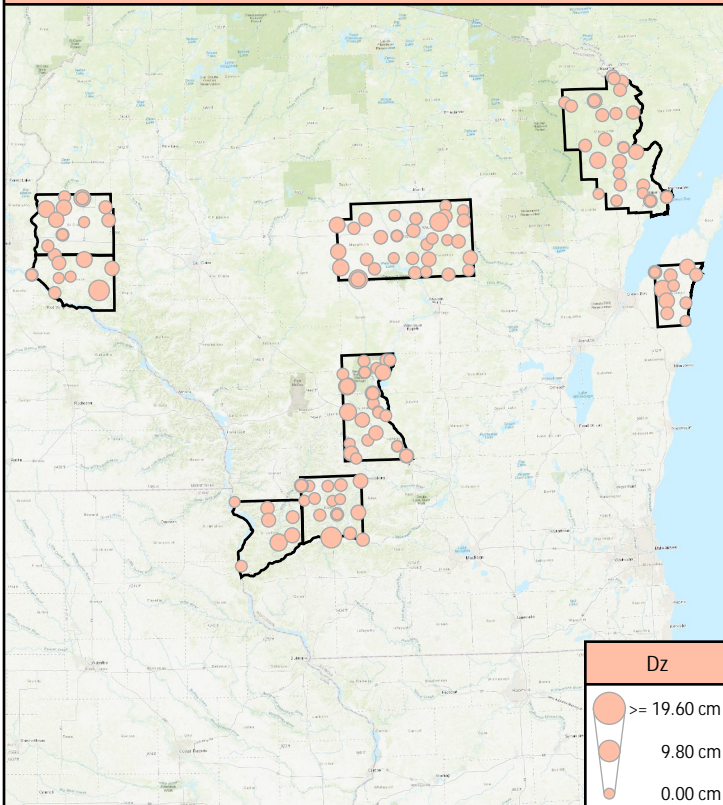


Calibration (DEM)

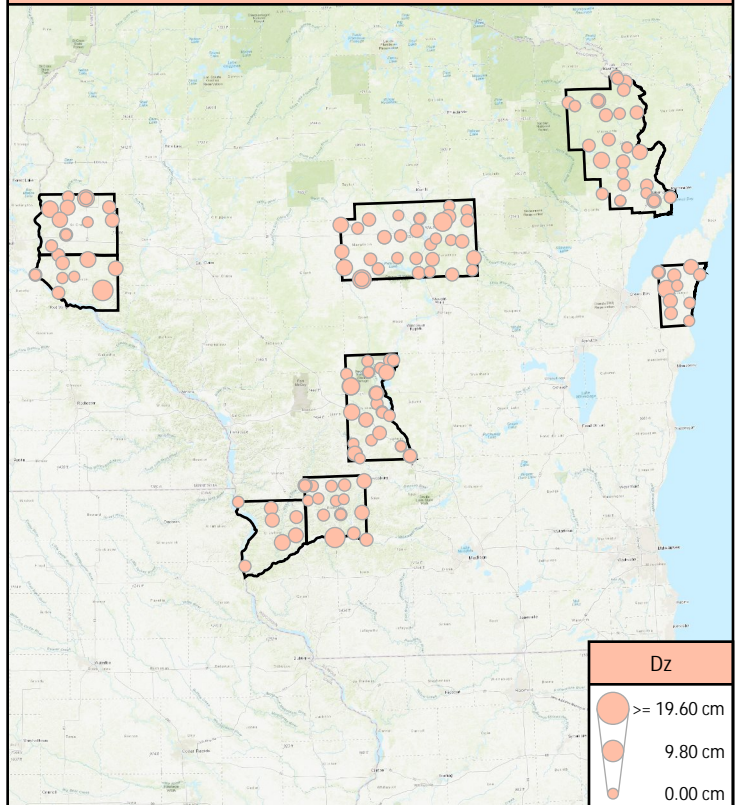


Control Point Locations

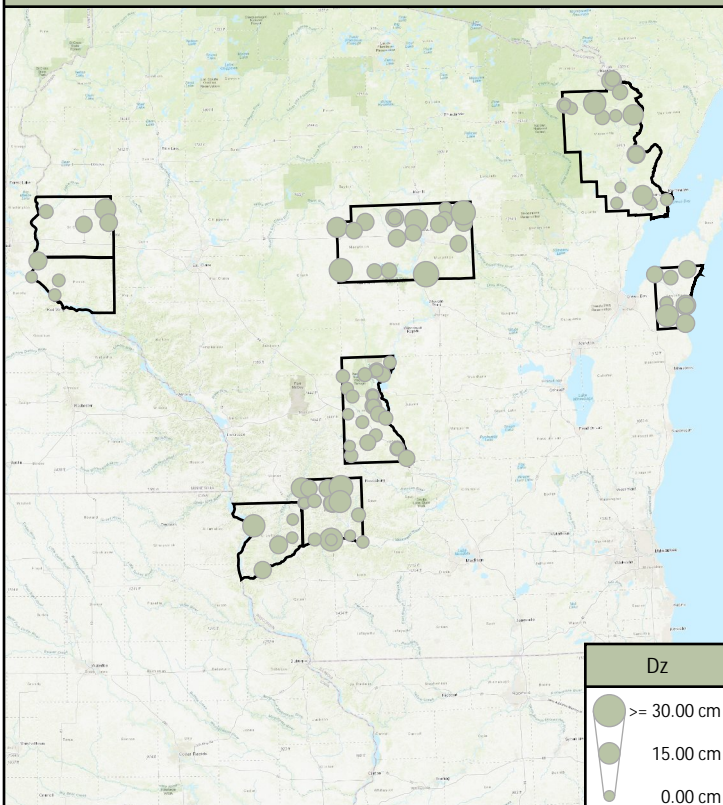
Nonvegetated Vertical Accuracy (Ground LAS)



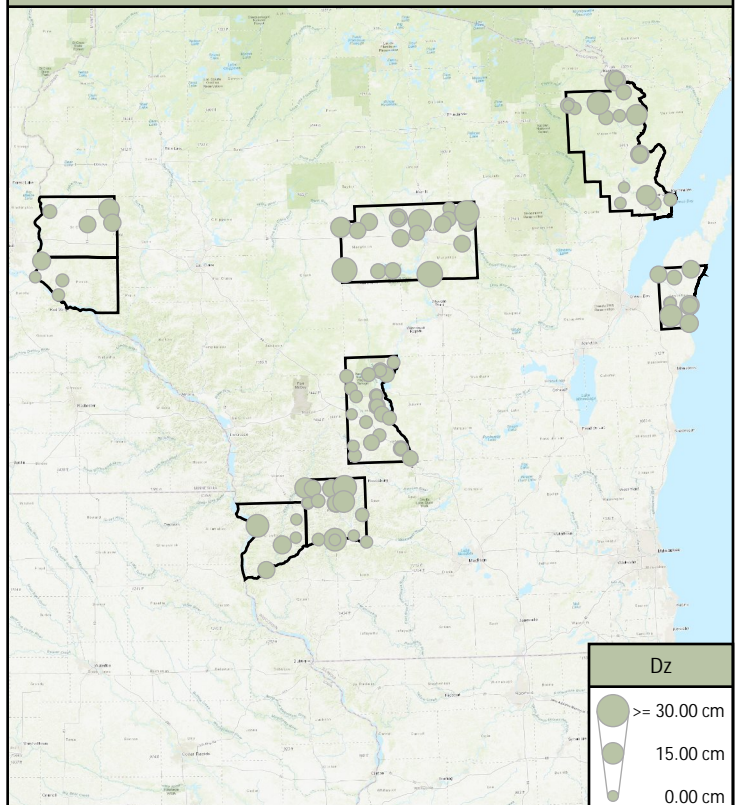
Nonvegetated Vertical Accuracy (DEM)



Vegetated Vertical Accuracy (Ground LAS)

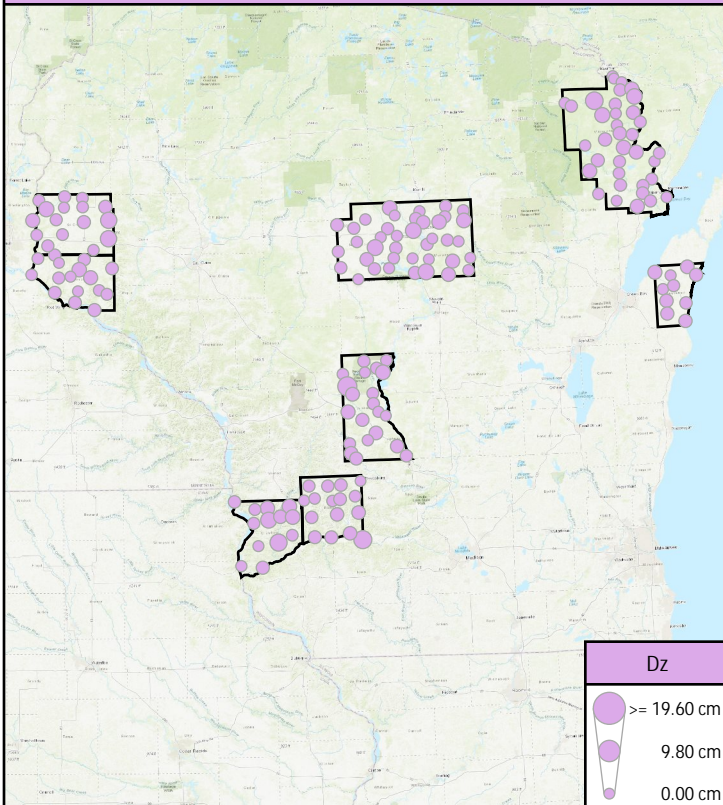


Vegetated Vertical Accuracy (DEM)

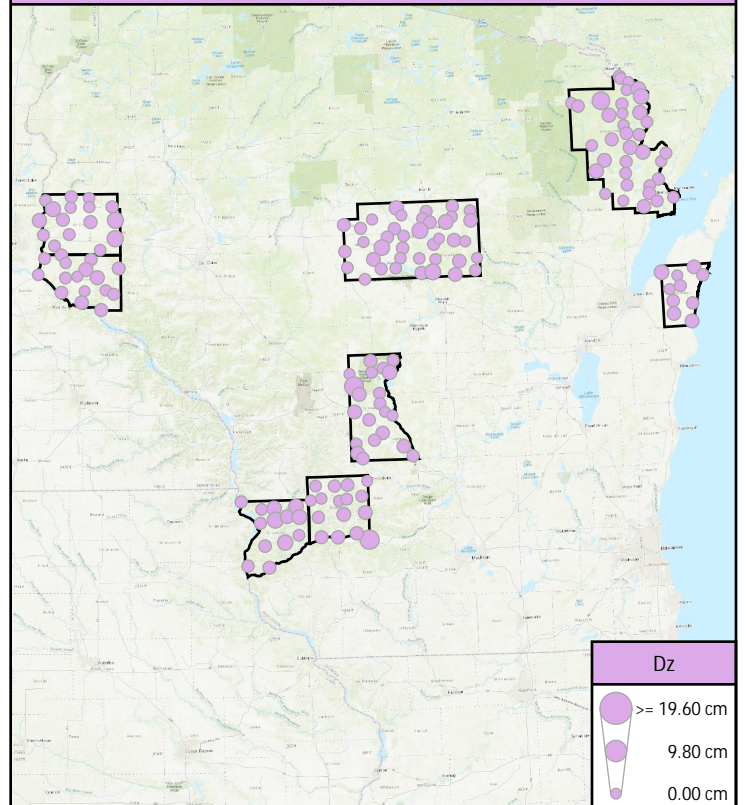


Control Point Locations (continued)

Calibration (Ground LAS)



Calibration (DEM)



Control Point Breakdown

Point	Type	Project	Ground (LAS Points)				DEM Dz
			Dz	Density	Nearest	Slope	
BE001	NVA	St_Croix_County	-4.47 cm	3.40 ppsm	0.37 m	1.69°	-4.55 cm
BE002	NVA	St_Croix_County	-5.48 cm	3.82 ppsm	0.30 m	1.28°	-5.59 cm
BE003	NVA	St_Croix_County	2.10 cm	4.35 ppsm	0.23 m	2.97°	2.19 cm
BE004	NVA	St_Croix_County	-3.63 cm	4.67 ppsm	0.19 m	0.81°	-3.33 cm
BE005	NVA	St_Croix_County	0.34 cm	3.47 ppsm	0.31 m	3.98°	0.18 cm
BE006	NVA	St_Croix_County	-1.94 cm	2.83 ppsm	0.30 m	5.71°	-1.99 cm
BE007	NVA	St_Croix_County	-0.32 cm	3.47 ppsm	0.17 m	2.20°	-0.97 cm
BE008	NVA	Pierce_County	-1.21 cm	2.76 ppsm	0.35 m	1.35°	-1.15 cm
BE009	NVA	Pierce_County	4.73 cm	3.40 ppsm	0.39 m	2.10°	4.64 cm
BE010	NVA	Pierce_County	-3.36 cm	2.86 ppsm	0.16 m	1.91°	-3.65 cm
BE011	NVA	Pierce_County	-1.85 cm	2.72 ppsm	0.42 m	1.43°	-1.92 cm
BE012	NVA	Pierce_County	0.25 cm	4.92 ppsm	0.19 m	1.35°	0.51 cm
BE013	NVA	Pierce_County	-9.02 cm	2.86 ppsm	0.35 m	3.24°	-8.99 cm
BE014	NVA	Pierce_County	1.44 cm	2.76 ppsm	0.30 m	1.62°	1.84 cm
BE015	NVA	Marathon_County	0.83 cm	2.86 ppsm	0.17 m	1.91°	0.62 cm
BE016	NVA	Marathon_County	4.56 cm	5.73 ppsm	0.37 m	1.24°	4.38 cm
BE017	NVA	Marathon_County	-0.76 cm	2.69 ppsm	0.05 m	0.74°	-0.11 cm
BE018	NVA	Marathon_County	0.81 cm	2.58 ppsm	0.34 m	4.76°	0.89 cm
BE019	NVA	Marathon_County	1.38 cm	2.86 ppsm	0.29 m	4.10°	1.11 cm
BE020	NVA	Marathon_County	1.10 cm	5.13 ppsm	0.18 m	1.15°	1.40 cm
BE021	NVA	Marathon_County	3.55 cm	3.50 ppsm	0.37 m	1.15°	3.52 cm
BE022	NVA	Marathon_County	2.05 cm	5.41 ppsm	0.09 m	5.90°	2.09 cm
BE023	NVA	Marathon_County	-2.16 cm	3.01 ppsm	0.25 m	0.68°	-2.25 cm
BE024	NVA	Marathon_County	-1.09 cm	4.74 ppsm	0.28 m	3.24°	-0.98 cm
BE025	NVA	Marathon_County	-2.54 cm	3.57 ppsm	0.13 m	1.15°	-2.70 cm
BE026	NVA	Marathon_County	4.22 cm	4.39 ppsm	0.16 m	3.24°	3.16 cm
BE027	NVA	Marathon_County	1.22 cm	2.65 ppsm	0.42 m	0.81°	1.21 cm
BE028	NVA	Marathon_County	-0.26 cm	4.10 ppsm	0.12 m	0.95°	-0.25 cm

Control Point Breakdown (continued)

Point	Type	Project	Ground (LAS Points)				DEM Dz
			Dz	Density	Nearest	Slope	
BE029	NVA	Marathon_County	2.53 cm	2.76 ppsm	0.27 m	2.48°	2.51 cm
BE030	NVA	Marathon_County	-0.48 cm	3.22 ppsm	0.21 m	1.69°	-0.70 cm
BE031	NVA	Marathon_County	-0.22 cm	4.60 ppsm	0.48 m	3.57°	0.62 cm
BE032	NVA	Marathon_County	3.52 cm	4.28 ppsm	0.12 m	10.67°	2.65 cm
BE033	NVA	Marathon_County	3.28 cm	4.35 ppsm	0.15 m	2.36°	3.58 cm
BE034	NVA	Marathon_County	5.19 cm	3.96 ppsm	0.28 m	1.55°	5.04 cm
BE035	NVA	Marathon_County	-1.37 cm	2.55 ppsm	0.43 m	1.28°	-1.33 cm
BE036	NVA	Marathon_County	-1.86 cm	2.97 ppsm	0.19 m	14.66°	-1.83 cm
BE037	NVA	Marathon_County	-0.61 cm	2.76 ppsm	0.14 m	1.82°	-0.63 cm
BE038	NVA	Marathon_County	-2.11 cm	3.08 ppsm	0.13 m	1.05°	-2.21 cm
BE039	NVA	Marathon_County	0.96 cm	2.69 ppsm	0.25 m	1.05°	0.75 cm
BE040	NVA	Marathon_County	7.27 cm	3.22 ppsm	0.46 m	3.64°	7.28 cm
BE040	NVA	Marinette_County	-0.21 cm	7.29 ppsm	0.12 m	0.81°	-0.93 cm
BE041	NVA	Marathon_County	7.35 cm	2.79 ppsm	0.27 m	2.70°	7.39 cm
BE041	NVA	Marinette_County	2.90 cm	3.25 ppsm	0.28 m	0.95°	3.06 cm
BE042	NVA	Marathon_County	2.37 cm	3.08 ppsm	0.04 m	4.10°	2.31 cm
BE042	NVA	Marinette_County	1.91 cm	3.36 ppsm	0.21 m	2.29°	1.77 cm
BE043	NVA	Marinette_County	-1.02 cm	3.68 ppsm	0.26 m	3.17°	-1.58 cm
BE044	NVA	Marinette_County	-0.51 cm	4.31 ppsm	0.14 m	3.98°	-0.43 cm
BE045	NVA	Marinette_County	3.60 cm	4.14 ppsm	0.34 m	2.77°	3.59 cm
BE046	NVA	Marinette_County	-2.02 cm	4.00 ppsm	0.29 m	3.64°	-2.16 cm
BE047	NVA	Marinette_County	-1.24 cm	4.17 ppsm	0.24 m	3.10°	-0.83 cm
BE048	NVA	Marinette_County	2.35 cm	5.55 ppsm	0.16 m	2.29°	2.35 cm
BE049	NVA	Marinette_County	1.77 cm	4.10 ppsm	0.07 m	1.53°	1.77 cm
BE050	NVA	Marinette_County	-2.27 cm	4.24 ppsm	0.36 m	0.76°	-2.03 cm
BE051	NVA	Marinette_County	-0.87 cm	4.39 ppsm	0.17 m	2.09°	0.10 cm
BE052	NVA	Marinette_County	3.80 cm	4.00 ppsm	0.23 m	2.43°	4.05 cm
BE053	NVA	Marinette_County	5.00 cm	3.57 ppsm	0.09 m	1.91°	5.01 cm

Control Point Breakdown (continued)

Point	Type	Project	Ground (LAS Points)				DEM Dz
			Dz	Density	Nearest	Slope	
BE054	NVA	Marinette_County	0.16 cm	4.10 ppsm	0.18 m	1.91°	0.16 cm
BE055	NVA	Marinette_County	1.33 cm	3.47 ppsm	0.31 m	1.81°	1.30 cm
BE056	NVA	Marinette_County	0.25 cm	5.69 ppsm	0.11 m	2.20°	1.18 cm
BE057	NVA	Marinette_County	1.85 cm	3.68 ppsm	0.29 m	1.22°	1.75 cm
BE058	NVA	Marinette_County	0.16 cm	3.75 ppsm	0.33 m	0.34°	-0.20 cm
BE059	NVA	Marinette_County	-0.35 cm	4.49 ppsm	0.08 m	2.39°	-0.35 cm
BE060	NVA	Marinette_County	2.55 cm	3.96 ppsm	0.07 m	1.62°	3.33 cm
BE061	NVA	Marinette_County	-1.59 cm	5.02 ppsm	0.41 m	2.77°	-1.16 cm
BE062	NVA	Kewaunee_County	2.50 cm	2.76 ppsm	0.14 m	2.36°	2.58 cm
BE063	NVA	Kewaunee_County	4.14 cm	2.86 ppsm	0.34 m	0.48°	3.79 cm
BE064	NVA	Kewaunee_County	2.20 cm	3.18 ppsm	0.39 m	0.61°	2.27 cm
BE065	NVA	Kewaunee_County	0.44 cm	3.04 ppsm	0.51 m	3.24°	0.22 cm
BE066	NVA	Kewaunee_County	6.21 cm	4.07 ppsm	0.18 m	1.05°	6.22 cm
BE067	NVA	Kewaunee_County	4.48 cm	4.81 ppsm	0.20 m	1.53°	3.04 cm
BE068	NVA	Kewaunee_County	-1.13 cm	4.35 ppsm	0.40 m	1.89°	-0.64 cm
BE069	NVA	Kewaunee_County	-1.87 cm	3.68 ppsm	0.33 m	5.32°	-1.90 cm
BE070	NVA	Kewaunee_County	0.20 cm	3.01 ppsm	0.32 m	3.71°	0.33 cm
BE071	NVA	Juneau_County	1.03 cm	3.57 ppsm	0.24 m	3.30°	0.81 cm
BE072	NVA	Juneau_County	1.87 cm	3.15 ppsm	0.32 m	2.10°	2.07 cm
BE073	NVA	Juneau_County	1.26 cm	3.36 ppsm	0.18 m	1.91°	1.35 cm
BE074	NVA	Juneau_County	1.44 cm	4.03 ppsm	0.01 m	1.08°	1.12 cm
BE075	NVA	Juneau_County	0.74 cm	3.71 ppsm	0.12 m	3.15°	0.71 cm
BE076	NVA	Juneau_County	4.64 cm	3.40 ppsm	0.20 m	3.43°	4.44 cm
BE077	NVA	Juneau_County	-6.01 cm	3.75 ppsm	0.14 m	4.00°	-6.31 cm
BE078	NVA	Juneau_County	-3.78 cm	2.94 ppsm	0.18 m	2.67°	-3.76 cm
BE079	NVA	Juneau_County	1.04 cm	2.83 ppsm	0.15 m	1.15°	1.28 cm
BE080	NVA	Juneau_County	-2.38 cm	4.00 ppsm	0.15 m	4.48°	-1.29 cm
BE081	NVA	Juneau_County	0.80 cm	2.83 ppsm	0.42 m	2.90°	1.12 cm

Control Point Breakdown (continued)

Point	Type	Project	Ground (LAS Points)				DEM Dz
			Dz	Density	Nearest	Slope	
BE082	NVA	Juneau_County	0.71 cm	2.76 ppsm	0.39 m	0.88°	0.71 cm
BE083	NVA	Juneau_County	-2.95 cm	2.69 ppsm	0.30 m	2.10°	-2.92 cm
BE084	NVA	Juneau_County	-1.04 cm	2.79 ppsm	0.14 m	3.81°	-0.65 cm
BE085	NVA	Juneau_County	0.78 cm	3.36 ppsm	0.31 m	18.99°	0.61 cm
BE086	NVA	Juneau_County	4.12 cm	3.11 ppsm	0.18 m	1.35°	4.10 cm
BE087	NVA	Juneau_County	3.19 cm	3.01 ppsm	0.16 m	2.77°	2.97 cm
BE088	NVA	Richland_County	0.72 cm	3.18 ppsm	0.20 m	1.53°	0.82 cm
BE089	NVA	Richland_County	0.85 cm	3.08 ppsm	0.33 m	1.24°	0.89 cm
BE090	NVA	Richland_County	1.62 cm	3.15 ppsm	0.34 m	1.82°	1.45 cm
BE091	NVA	Crawford_County	0.12 cm	5.41 ppsm	0.26 m	1.22°	0.69 cm
BE092	NVA	Crawford_County	2.45 cm	3.36 ppsm	0.25 m	6.75°	2.51 cm
BE093	NVA	Richland_County	0.09 cm	3.32 ppsm	0.17 m	3.98°	-0.11 cm
BE094	NVA	Richland_County	-0.89 cm	2.90 ppsm	0.21 m	2.48°	-0.57 cm
BE095	NVA	Richland_County	0.33 cm	3.01 ppsm	0.08 m	10.68°	-0.52 cm
BE096	NVA	Richland_County	0.08 cm	4.24 ppsm	0.21 m	2.48°	0.09 cm
BE097	NVA	Crawford_County	3.05 cm	3.25 ppsm	0.19 m	2.00°	3.06 cm
BE098	NVA	Crawford_County	-1.92 cm	3.71 ppsm	0.17 m	14.75°	-1.94 cm
BE099	NVA	Richland_County	2.17 cm	2.55 ppsm	0.42 m	1.76°	1.58 cm
BE100	NVA	Richland_County	-3.66 cm	3.32 ppsm	0.17 m	1.81°	-3.45 cm
BE101	NVA	Crawford_County	5.93 cm	4.63 ppsm	0.19 m	1.72°	4.72 cm
BE102	NVA	Crawford_County	3.92 cm	2.58 ppsm	0.19 m	1.43°	3.73 cm
BE103	NVA	Richland_County	-9.24 cm	4.99 ppsm	0.18 m	5.65°	-8.65 cm
BE104	NVA	Richland_County	-1.83 cm	3.01 ppsm	0.23 m	3.15°	-1.90 cm
BE105	NVA	Crawford_County	-0.88 cm	4.85 ppsm	0.18 m	2.58°	-1.22 cm
BE204	NVA	Richland_County	2.26 cm	5.23 ppsm	0.26 m	1.72°	2.16 cm
BE206	NVA	Richland_County	-2.96 cm	3.11 ppsm	0.29 m	4.29°	-3.11 cm
UA001	NVA	St_Croix_County	-1.20 cm	2.62 ppsm	0.21 m	3.34°	-1.12 cm
UA002	NVA	St_Croix_County	-1.85 cm	3.43 ppsm	0.36 m	0.95°	-1.84 cm

Control Point Breakdown (continued)

Point	Type	Project	Ground (LAS Points)				DEM Dz
			Dz	Density	Nearest	Slope	
UA003	NVA	St_Croix_County	-5.43 cm	2.83 ppsm	0.32 m	1.72°	-5.39 cm
UA004	NVA	St_Croix_County	4.33 cm	4.56 ppsm	0.09 m	0.67°	3.92 cm
UA005	NVA	St_Croix_County	-4.11 cm	2.94 ppsm	0.33 m	1.69°	-4.22 cm
UA006	NVA	St_Croix_County	-2.65 cm	2.65 ppsm	0.33 m	1.05°	-2.89 cm
UA007	NVA	St_Croix_County	-0.44 cm	3.01 ppsm	0.26 m	2.77°	-0.38 cm
UA008	NVA	St_Croix_County	-1.25 cm	2.94 ppsm	0.34 m	3.15°	-1.21 cm
UA009	NVA	Pierce_County	-1.94 cm	2.76 ppsm	0.10 m	1.34°	-1.89 cm
UA010	NVA	Pierce_County	-2.81 cm	5.16 ppsm	0.30 m	4.31°	-2.54 cm
UA011	NVA	Pierce_County	-0.56 cm	2.69 ppsm	0.22 m	3.10°	-0.57 cm
UA012	NVA	Pierce_County	-0.27 cm	3.04 ppsm	0.23 m	3.43°	-0.22 cm
UA013	NVA	Marathon_County	-0.98 cm	5.66 ppsm	0.16 m	2.43°	-0.06 cm
UA014	NVA	Marathon_County	-0.16 cm	4.17 ppsm	0.20 m	2.20°	-1.36 cm
UA015	NVA	Marathon_County	-0.76 cm	2.86 ppsm	0.35 m	1.15°	-0.46 cm
UA016	NVA	Marathon_County	-1.45 cm	2.33 ppsm	0.24 m	1.05°	-1.57 cm
UA017	NVA	Marathon_County	-3.78 cm	2.76 ppsm	0.13 m	1.53°	-3.41 cm
UA018	NVA	Marinette_County	1.93 cm	5.31 ppsm	0.12 m	1.15°	1.46 cm
UA018	NVA	Marathon_County	-2.63 cm	2.16 ppsm	0.44 m	1.28°	-2.55 cm
UA019	NVA	Marinette_County	-1.40 cm	4.28 ppsm	0.21 m	1.28°	-1.28 cm
UA019	NVA	Marathon_County	-1.77 cm	3.54 ppsm	0.39 m	0.61°	-1.76 cm
UA020	NVA	Marinette_County	1.38 cm	4.10 ppsm	0.20 m	1.72°	1.29 cm
UA021	NVA	Marinette_County	-0.15 cm	4.42 ppsm	0.16 m	1.01°	-0.08 cm
UA022	NVA	Marinette_County	3.18 cm	3.61 ppsm	0.36 m	1.05°	2.67 cm
UA023	NVA	Marinette_County	0.67 cm	2.62 ppsm	0.37 m	1.81°	0.36 cm
UA024	NVA	Marinette_County	-0.52 cm	4.03 ppsm	0.21 m	2.00°	-0.43 cm
UA025	NVA	Marinette_County	0.49 cm	3.68 ppsm	0.21 m	1.53°	0.94 cm
UA026	NVA	Marinette_County	-1.26 cm	4.81 ppsm	0.28 m	1.22°	-1.29 cm
UA027	NVA	Kewaunee_County	0.15 cm	2.86 ppsm	0.35 m	1.34°	1.15 cm
UA028	NVA	Kewaunee_County	-2.06 cm	3.29 ppsm	0.40 m	1.24°	-1.45 cm

Control Point Breakdown (continued)

Point	Type	Project	Ground (LAS Points)				DEM Dz
			Dz	Density	Nearest	Slope	
UA029	NVA	Kewaunee_County	0.64 cm	3.18 ppsm	0.14 m	1.28°	0.46 cm
UA030	NVA	Juneau_County	0.95 cm	2.86 ppsm	0.44 m	0.76°	0.95 cm
UA031	NVA	Juneau_County	-0.58 cm	3.78 ppsm	0.07 m	2.10°	-0.37 cm
UA032	NVA	Juneau_County	-4.52 cm	3.96 ppsm	0.28 m	1.81°	-5.79 cm
UA033	NVA	Juneau_County	-2.01 cm	2.90 ppsm	0.18 m	1.62°	-2.66 cm
UA034	NVA	Juneau_County	-5.69 cm	3.89 ppsm	0.09 m	1.24°	-4.95 cm
UA035	NVA	Juneau_County	-3.37 cm	2.62 ppsm	0.17 m	2.50°	-3.17 cm
UA036	NVA	Juneau_County	-0.95 cm	3.11 ppsm	0.37 m	0.95°	-0.84 cm
UA037	NVA	Juneau_County	3.29 cm	4.14 ppsm	0.31 m	2.67°	2.66 cm
UA038	NVA	Juneau_County	0.16 cm	2.97 ppsm	0.34 m	1.91°	0.26 cm
UA039	NVA	Juneau_County	0.18 cm	3.08 ppsm	0.28 m	2.00°	0.12 cm
UA040	NVA	Juneau_County	3.48 cm	2.86 ppsm	0.14 m	2.10°	3.32 cm
UA041	NVA	Juneau_County	-0.57 cm	2.72 ppsm	0.16 m	3.05°	-0.11 cm
UA042	NVA	Juneau_County	2.29 cm	3.04 ppsm	0.32 m	2.10°	2.32 cm
UA043	NVA	Richland_County	1.30 cm	3.01 ppsm	0.25 m	1.91°	1.02 cm
UA044	NVA	Richland_County	-3.53 cm	3.08 ppsm	0.20 m	2.23°	-3.55 cm
UA045	NVA	Richland_County	1.28 cm	3.32 ppsm	0.38 m	0.61°	1.21 cm
UA046	NVA	Richland_County	-0.01 cm	2.69 ppsm	0.38 m	1.81°	-0.19 cm
UA047	NVA	Marinette_County	1.31 cm	4.07 ppsm	0.07 m	3.91°	0.49 cm
FO001	VVA	St_Croix_County	4.47 cm	2.86 ppsm	0.23 m	2.39°	4.35 cm
FO002	VVA	Pierce_County	2.31 cm	2.62 ppsm	0.33 m	5.19°	2.35 cm
FO003	VVA	Marathon_County	9.12 cm	1.95 ppsm	0.07 m	3.04°	8.78 cm
FO004	VVA	Marathon_County	7.86 cm	1.31 ppsm	0.20 m	5.99°	8.03 cm
FO005	VVA	Marathon_County	6.03 cm	2.19 ppsm	0.42 m	1.81°	6.00 cm
FO006	VVA	Marathon_County	5.01 cm	2.19 ppsm	0.20 m	3.53°	4.56 cm
FO007	VVA	Marathon_County	10.06 cm	2.30 ppsm	0.53 m	2.39°	10.17 cm
FO007	VVA	Marinette_County	4.04 cm	1.77 ppsm	0.29 m	1.69°	2.73 cm
FO008	VVA	Marinette_County	12.37 cm	2.69 ppsm	0.23 m	5.99°	13.75 cm

Control Point Breakdown (continued)

Point	Type	Project	Ground (LAS Points)				DEM Dz
			Dz	Density	Nearest	Slope	
FO009	VVA	Marinette_County	6.32 cm	2.72 ppsm	0.38 m	7.41°	6.30 cm
FO010	VVA	Marinette_County	6.12 cm	2.62 ppsm	0.09 m	3.37°	6.41 cm
FO011	VVA	Marinette_County	2.03 cm	3.11 ppsm	0.32 m	5.71°	2.25 cm
FO012	VVA	Marinette_County	9.35 cm	3.93 ppsm	0.14 m	3.17°	9.14 cm
FO013	VVA	Marinette_County	5.07 cm	2.97 ppsm	0.21 m	4.67°	5.09 cm
FO014	VVA	Marinette_County	-1.94 cm	1.87 ppsm	0.24 m	5.72°	-2.24 cm
FO015	VVA	Marinette_County	4.58 cm	0.53 ppsm	0.76 m	2.96°	4.74 cm
FO016	VVA	Marinette_County	10.33 cm	1.84 ppsm	0.38 m	1.76°	10.62 cm
FO017	VVA	Marinette_County	0.14 cm	1.95 ppsm	0.22 m	2.77°	-0.63 cm
FO018	VVA	Marinette_County	-1.54 cm	3.18 ppsm	0.56 m	2.16°	-1.29 cm
FO019	VVA	Marinette_County	0.42 cm	0.18 ppsm	0.13 m	0.88°	0.66 cm
FO020	VVA	Marinette_County	3.78 cm	3.57 ppsm	0.21 m	2.29°	4.25 cm
FO021	VVA	Marinette_County	2.10 cm	3.78 ppsm	0.23 m	2.63°	3.13 cm
FO022	VVA	Kewaunee_County	3.16 cm	3.68 ppsm	0.24 m	3.05°	3.15 cm
FO023	VVA	Kewaunee_County	12.48 cm	0.92 ppsm	0.21 m	7.59°	11.88 cm
FO024	VVA	Juneau_County	6.86 cm	3.43 ppsm	0.39 m	1.55°	7.03 cm
FO025	VVA	Juneau_County	6.10 cm	3.50 ppsm	0.31 m	3.84°	6.22 cm
FO026	VVA	Juneau_County	-0.13 cm	2.76 ppsm	0.14 m	1.43°	0.24 cm
FO027	VVA	Juneau_County	-4.07 cm	2.79 ppsm	0.38 m	3.34°	-4.04 cm
FO028	VVA	Juneau_County	8.30 cm	1.31 ppsm	0.35 m	3.24°	7.90 cm
FO029	VVA	Juneau_County	-0.85 cm	2.86 ppsm	0.25 m	4.58°	-0.48 cm
FO030	VVA	Juneau_County	-2.94 cm	0.50 ppsm	1.28 m	-	-2.94 cm
FO031	VVA	Juneau_County	1.10 cm	2.83 ppsm	0.08 m	1.62°	1.72 cm
FO032	VVA	Juneau_County	-2.94 cm	2.69 ppsm	0.43 m	1.91°	-2.84 cm
FO033	VVA	Juneau_County	0.55 cm	3.08 ppsm	0.17 m	2.48°	0.30 cm
FO034	VVA	Juneau_County	6.21 cm	3.01 ppsm	0.25 m	5.39°	6.26 cm
FO035	VVA	Juneau_County	3.67 cm	2.97 ppsm	0.20 m	1.82°	3.39 cm
FO036	VVA	Juneau_County	5.61 cm	2.16 ppsm	0.32 m	4.92°	6.27 cm

Control Point Breakdown (continued)

Point	Type	Project	Ground (LAS Points)				DEM Dz
			Dz	Density	Nearest	Slope	
FO037	VVA	Richland_County	0.46 cm	2.55 ppsm	0.30 m	5.45°	0.23 cm
FO038	VVA	Richland_County	2.13 cm	3.25 ppsm	0.06 m	12.59°	2.30 cm
FO039	VVA	Richland_County	2.45 cm	3.18 ppsm	0.18 m	3.15°	2.67 cm
FO040	VVA	Richland_County	2.97 cm	2.94 ppsm	0.16 m	3.24°	3.10 cm
FO041	VVA	Richland_County	10.27 cm	2.55 ppsm	0.23 m	4.29°	9.95 cm
FO042	VVA	Crawford_County	6.74 cm	2.55 ppsm	0.22 m	12.59°	7.05 cm
FO043	VVA	Crawford_County	-1.20 cm	1.80 ppsm	0.20 m	6.45°	-0.85 cm
FO044	VVA	Richland_County	2.21 cm	2.55 ppsm	0.25 m	2.43°	3.41 cm
FO045	VVA	Crawford_County	-1.14 cm	2.55 ppsm	0.34 m	4.38°	-0.89 cm
FO046	VVA	Richland_County	-0.60 cm	2.86 ppsm	0.12 m	1.89°	-0.87 cm
FO047	VVA	Richland_County	2.97 cm	1.98 ppsm	0.21 m	20.01°	4.08 cm
FO048	VVA	Richland_County	2.21 cm	5.02 ppsm	0.29 m	1.35°	2.15 cm
FO049	VVA	Crawford_County	9.21 cm	2.62 ppsm	0.39 m	5.99°	8.89 cm
SH001	VVA	Richland_County	17.10 cm	2.30 ppsm	0.72 m	9.96°	16.73 cm
SH002	VVA	Marinette_County	6.54 cm	1.34 ppsm	0.51 m	2.00°	5.80 cm
TW001	VVA	St_Croix_County	-4.57 cm	2.55 ppsm	0.04 m	2.00°	-4.42 cm
TW002	VVA	St_Croix_County	13.93 cm	3.86 ppsm	0.25 m	0.61°	13.60 cm
TW003	VVA	St_Croix_County	8.23 cm	2.69 ppsm	0.30 m	3.24°	8.40 cm
TW004	VVA	St_Croix_County	9.65 cm	2.83 ppsm	0.31 m	4.10°	9.22 cm
TW005	VVA	Pierce_County	10.23 cm	4.31 ppsm	0.39 m	1.91°	10.19 cm
TW006	VVA	Pierce_County	1.29 cm	2.37 ppsm	0.34 m	1.81°	1.27 cm
TW007	VVA	Pierce_County	2.81 cm	4.92 ppsm	0.16 m	5.05°	3.09 cm
TW008	VVA	Marathon_County	2.82 cm	2.90 ppsm	0.25 m	3.17°	2.73 cm
TW009	VVA	Marathon_County	12.93 cm	5.45 ppsm	0.21 m	2.29°	13.12 cm
TW010	VVA	Marathon_County	7.99 cm	2.86 ppsm	0.61 m	3.78°	7.86 cm
TW011	VVA	Marathon_County	3.94 cm	2.65 ppsm	0.32 m	1.24°	4.13 cm
TW012	VVA	Marathon_County	16.93 cm	6.37 ppsm	0.24 m	1.42°	17.46 cm
TW013	VVA	Marathon_County	6.33 cm	3.36 ppsm	0.21 m	1.55°	6.24 cm

Control Point Breakdown (continued)

Point	Type	Project	Ground (LAS Points)				DEM Dz
			Dz	Density	Nearest	Slope	
TW014	VVA	Marathon_County	8.96 cm	4.81 ppsm	0.19 m	6.25°	9.00 cm
TW015	VVA	Marathon_County	9.32 cm	3.93 ppsm	0.26 m	5.65°	8.94 cm
TW016	VVA	Marathon_County	7.79 cm	3.71 ppsm	0.15 m	7.05°	5.99 cm
TW017	VVA	Marathon_County	8.41 cm	2.58 ppsm	0.17 m	1.49°	8.38 cm
TW018	VVA	Marathon_County	17.62 cm	3.57 ppsm	0.02 m	10.94°	20.00 cm
TW019	VVA	Marathon_County	6.54 cm	2.55 ppsm	0.24 m	0.74°	7.29 cm
TW020	VVA	Marinette_County	0.62 cm	3.36 ppsm	0.23 m	5.05°	0.16 cm
TW020	VVA	Marathon_County	8.54 cm	3.40 ppsm	0.45 m	5.81°	8.51 cm
TW021	VVA	Marinette_County	16.11 cm	4.21 ppsm	0.30 m	6.18°	16.26 cm
TW022	VVA	Marinette_County	13.39 cm	4.88 ppsm	0.19 m	3.72°	13.88 cm
TW023	VVA	Marinette_County	7.89 cm	4.74 ppsm	0.29 m	2.96°	7.44 cm
TW024	VVA	Marinette_County	12.98 cm	3.57 ppsm	0.28 m	3.34°	12.81 cm
TW025	VVA	Kewaunee_County	8.11 cm	2.65 ppsm	0.45 m	1.35°	8.50 cm
TW026	VVA	Kewaunee_County	5.46 cm	2.76 ppsm	0.19 m	1.72°	5.72 cm
TW027	VVA	Kewaunee_County	9.53 cm	2.90 ppsm	0.30 m	3.10°	9.73 cm
TW028	VVA	Kewaunee_County	2.40 cm	3.89 ppsm	0.23 m	3.05°	1.52 cm
TW029	VVA	Kewaunee_County	7.66 cm	3.89 ppsm	0.04 m	2.50°	7.55 cm
TW030	VVA	Kewaunee_County	16.00 cm	3.50 ppsm	0.23 m	4.18°	16.24 cm
TW031	VVA	Kewaunee_County	10.69 cm	3.15 ppsm	0.16 m	5.05°	10.68 cm
TW032	VVA	Juneau_County	2.70 cm	3.32 ppsm	0.28 m	1.82°	2.76 cm
TW033	VVA	Juneau_County	2.88 cm	4.46 ppsm	0.32 m	1.24°	2.31 cm
TW034	VVA	Juneau_County	3.67 cm	2.90 ppsm	0.18 m	2.00°	3.86 cm
TW035	VVA	Juneau_County	4.23 cm	3.86 ppsm	0.23 m	1.24°	4.39 cm
TW036	VVA	Juneau_County	2.71 cm	3.01 ppsm	0.26 m	6.09°	2.74 cm
TW037	VVA	Juneau_County	3.19 cm	2.94 ppsm	0.25 m	1.24°	2.42 cm
TW038	VVA	Juneau_County	1.06 cm	2.76 ppsm	0.31 m	3.57°	1.18 cm
TW039	VVA	Juneau_County	4.00 cm	2.90 ppsm	0.21 m	1.69°	4.49 cm
TW040	VVA	Juneau_County	6.97 cm	3.50 ppsm	0.20 m	2.43°	6.92 cm

Control Point Breakdown (continued)

Point	Type	Project	Ground (LAS Points)				DEM Dz
			Dz	Density	Nearest	Slope	
TW041	VVA	Juneau_County	4.72 cm	2.90 ppsm	0.12 m	2.29°	4.55 cm
TW042	VVA	Juneau_County	3.15 cm	4.39 ppsm	0.28 m	2.10°	3.34 cm
TW043	VVA	Juneau_County	7.00 cm	2.86 ppsm	0.28 m	3.72°	6.76 cm
TW044	VVA	Juneau_County	-0.69 cm	2.79 ppsm	0.19 m	4.48°	-1.13 cm
TW045	VVA	Juneau_County	3.43 cm	3.86 ppsm	0.33 m	7.13°	3.31 cm
TW046	VVA	Juneau_County	7.91 cm	2.94 ppsm	0.03 m	2.97°	6.83 cm
TW047	VVA	Richland_County	13.43 cm	2.62 ppsm	0.44 m	4.19°	13.63 cm
TW048	VVA	Richland_County	8.05 cm	3.04 ppsm	0.24 m	3.05°	8.38 cm
TW049	VVA	Richland_County	9.73 cm	3.15 ppsm	0.17 m	4.48°	10.00 cm
TW050	VVA	Richland_County	18.23 cm	2.30 ppsm	0.20 m	4.76°	18.21 cm
TW051	VVA	Richland_County	-0.31 cm	3.11 ppsm	0.24 m	3.91°	-0.67 cm
TW052	VVA	Richland_County	3.82 cm	2.69 ppsm	0.33 m	1.34°	3.88 cm
TW053	VVA	Richland_County	8.50 cm	3.04 ppsm	0.37 m	2.29°	8.81 cm
TW054	VVA	Richland_County	15.77 cm	2.72 ppsm	0.28 m	2.58°	15.26 cm
TW055	VVA	Crawford_County	16.11 cm	2.55 ppsm	0.30 m	2.20°	16.78 cm
TW056	VVA	Crawford_County	9.93 cm	4.28 ppsm	0.38 m	4.86°	10.30 cm
TW057	VVA	Richland_County	3.05 cm	2.44 ppsm	0.12 m	8.91°	2.64 cm
TW058	VVA	Richland_County	1.34 cm	4.67 ppsm	0.21 m	3.44°	1.31 cm
TW059	VVA	Marathon_County	18.82 cm	2.55 ppsm	0.10 m	4.10°	19.06 cm
TW060	VVA	Marathon_County	20.46 cm	2.76 ppsm	0.44 m	1.49°	20.65 cm
TW205	VVA	Richland_County	4.44 cm	3.15 ppsm	0.39 m	2.96°	3.47 cm
CA001	CAL	St_Croix_County	-1.05 cm	2.69 ppsm	0.40 m	1.34°	-0.82 cm
CA002	CAL	St_Croix_County	-1.34 cm	2.62 ppsm	0.26 m	1.72°	-1.37 cm
CA003	CAL	St_Croix_County	-0.97 cm	3.15 ppsm	0.31 m	2.67°	-0.65 cm
CA004	CAL	St_Croix_County	-4.14 cm	2.72 ppsm	0.44 m	1.72°	-4.02 cm
CA005	CAL	St_Croix_County	0.28 cm	4.39 ppsm	0.21 m	1.34°	0.57 cm
CA006	CAL	St_Croix_County	0.79 cm	2.79 ppsm	0.36 m	2.00°	0.53 cm
CA007	CAL	St_Croix_County	2.39 cm	4.00 ppsm	0.05 m	2.23°	1.35 cm

Control Point Breakdown (continued)

Point	Type	Project	Ground (LAS Points)				DEM Dz
			Dz	Density	Nearest	Slope	
CA008	CAL	St_Croix_County	-2.99 cm	2.65 ppsm	0.27 m	1.76°	-3.16 cm
CA009	CAL	St_Croix_County	-1.24 cm	4.17 ppsm	0.07 m	1.24°	-2.12 cm
CA010	CAL	St_Croix_County	2.23 cm	3.01 ppsm	0.08 m	1.34°	2.14 cm
CA011	CAL	St_Croix_County	-5.12 cm	2.65 ppsm	0.08 m	2.70°	-4.88 cm
CA012	CAL	St_Croix_County	-0.84 cm	1.95 ppsm	0.29 m	3.15°	-1.01 cm
CA013	CAL	St_Croix_County	-1.00 cm	2.79 ppsm	0.28 m	1.81°	-1.05 cm
CA015	CAL	St_Croix_County	-5.18 cm	3.22 ppsm	0.05 m	2.83°	-5.05 cm
CA016	CAL	St_Croix_County	1.30 cm	3.15 ppsm	0.25 m	1.81°	0.90 cm
CA017	CAL	St_Croix_County	-0.59 cm	2.97 ppsm	0.30 m	2.96°	-0.61 cm
CAL018	CAL	Pierce_County	-0.87 cm	3.64 ppsm	0.23 m	1.08°	-1.08 cm
CAL019	CAL	Pierce_County	-1.41 cm	2.76 ppsm	0.30 m	0.76°	-1.53 cm
CAL020	CAL	Pierce_County	1.40 cm	3.11 ppsm	0.39 m	1.72°	1.36 cm
CAL021	CAL	Pierce_County	-0.03 cm	4.88 ppsm	0.18 m	7.03°	-0.42 cm
CAL022	CAL	Pierce_County	-0.65 cm	2.51 ppsm	0.21 m	2.70°	-0.73 cm
CAL023	CAL	Pierce_County	3.45 cm	4.24 ppsm	0.22 m	2.36°	2.96 cm
CAL024	CAL	Pierce_County	-1.76 cm	2.72 ppsm	0.28 m	1.91°	-1.94 cm
CAL025	CAL	Pierce_County	1.20 cm	4.77 ppsm	0.22 m	3.15°	0.90 cm
CAL026	CAL	Pierce_County	-0.26 cm	2.86 ppsm	0.24 m	3.62°	-0.07 cm
CAL027	CAL	Pierce_County	3.04 cm	3.43 ppsm	0.46 m	1.43°	3.00 cm
CAL028	CAL	Pierce_County	1.76 cm	2.76 ppsm	0.44 m	2.39°	1.77 cm
CAL029	CAL	Pierce_County	-0.09 cm	3.75 ppsm	0.19 m	0.95°	0.11 cm
CAL030	CAL	Pierce_County	0.66 cm	2.94 ppsm	0.34 m	1.62°	0.58 cm
CAL031	CAL	Pierce_County	-1.08 cm	2.33 ppsm	0.21 m	1.89°	-1.13 cm
CAL032	CAL	Pierce_County	1.85 cm	4.17 ppsm	0.37 m	2.50°	2.41 cm
CAL033	CAL	Pierce_County	2.14 cm	2.94 ppsm	0.24 m	2.48°	2.07 cm
CAL034	CAL	Richland_County	-1.25 cm	3.11 ppsm	0.05 m	3.05°	-0.78 cm
CAL035	CAL	Richland_County	-1.46 cm	3.22 ppsm	0.11 m	3.44°	-1.43 cm
CAL036	CAL	Richland_County	-1.70 cm	3.22 ppsm	0.32 m	0.47°	-1.72 cm

Control Point Breakdown (continued)

Point	Type	Project	Ground (LAS Points)				DEM Dz
			Dz	Density	Nearest	Slope	
CAL037	CAL	Richland_County	0.00 cm	3.11 ppsm	0.23 m	1.72°	0.08 cm
CAL038	CAL	Richland_County	0.22 cm	3.18 ppsm	0.27 m	0.95°	-0.17 cm
CAL039	CAL	Richland_County	-0.62 cm	2.94 ppsm	0.39 m	3.34°	-0.46 cm
CAL040	CAL	Richland_County	0.66 cm	2.97 ppsm	0.13 m	3.98°	0.42 cm
CAL041	CAL	Richland_County	-1.86 cm	4.10 ppsm	0.28 m	3.37°	-1.01 cm
CAL042	CAL	Richland_County	-0.94 cm	2.83 ppsm	0.19 m	2.36°	-1.12 cm
CAL043	CAL	Crawford_County	3.50 cm	5.52 ppsm	0.11 m	2.67°	3.50 cm
CAL044	CAL	Crawford_County	3.36 cm	3.32 ppsm	0.34 m	4.18°	3.35 cm
CAL045	CAL	Crawford_County	1.06 cm	6.47 ppsm	0.12 m	2.70°	0.77 cm
CAL046	CAL	Crawford_County	1.60 cm	5.41 ppsm	0.13 m	1.34°	1.30 cm
CAL047	CAL	Crawford_County	1.20 cm	2.97 ppsm	0.25 m	0.88°	1.15 cm
CAL048	CAL	Crawford_County	4.80 cm	3.18 ppsm	0.48 m	2.29°	4.81 cm
CAL049	CAL	Crawford_County	2.58 cm	3.50 ppsm	0.30 m	1.89°	2.57 cm
CAL050	CAL	Crawford_County	-3.63 cm	3.50 ppsm	0.31 m	3.91°	-3.69 cm
CAL051	CAL	Richland_County	-1.58 cm	5.69 ppsm	0.08 m	3.34°	-1.37 cm
CAL053	CAL	Richland_County	2.45 cm	2.72 ppsm	0.20 m	3.71°	2.83 cm
CAL054	CAL	Richland_County	-2.65 cm	3.04 ppsm	0.15 m	2.29°	-2.81 cm
CAL055	CAL	Richland_County	-6.70 cm	4.53 ppsm	0.08 m	3.43°	-7.79 cm
CAL056	CAL	Richland_County	-2.57 cm	3.11 ppsm	0.27 m	2.29°	-2.37 cm
CAL057	CAL	Richland_County	-2.11 cm	2.97 ppsm	0.25 m	2.10°	-2.39 cm
CAL058	CAL	Richland_County	-2.05 cm	3.15 ppsm	0.47 m	1.22°	-2.04 cm
CAL059	CAL	Crawford_County	0.89 cm	2.97 ppsm	0.29 m	3.24°	0.88 cm
CAL060	CAL	Crawford_County	5.86 cm	4.81 ppsm	0.17 m	0.76°	4.24 cm
CAL061	CAL	Crawford_County	0.22 cm	6.97 ppsm	0.05 m	2.20°	1.71 cm
CAL062	CAL	Crawford_County	-0.40 cm	4.81 ppsm	0.19 m	1.53°	1.42 cm
CAL063	CAL	Crawford_County	2.18 cm	2.83 ppsm	0.25 m	0.86°	2.03 cm
CAL064	CAL	Juneau_County	1.33 cm	3.71 ppsm	0.10 m	3.44°	2.17 cm
CAL065	CAL	Juneau_County	0.75 cm	3.15 ppsm	0.31 m	1.28°	1.02 cm

Control Point Breakdown (continued)

Point	Type	Project	Ground (LAS Points)				DEM Dz
			Dz	Density	Nearest	Slope	
CAL066	CAL	Juneau_County	-0.71 cm	2.94 ppsm	0.26 m	1.24°	-0.21 cm
CAL067	CAL	Juneau_County	-0.28 cm	3.93 ppsm	0.13 m	2.77°	-0.89 cm
CAL068	CAL	Juneau_County	-1.35 cm	3.61 ppsm	0.38 m	2.00°	-1.28 cm
CAL069	CAL	Juneau_County	3.74 cm	4.31 ppsm	0.22 m	0.81°	3.52 cm
CAL070	CAL	Juneau_County	-7.71 cm	3.96 ppsm	0.19 m	2.39°	-7.51 cm
CAL071	CAL	Juneau_County	-2.85 cm	2.86 ppsm	0.13 m	2.67°	-3.00 cm
CAL072	CAL	Juneau_County	-0.96 cm	2.30 ppsm	0.24 m	1.81°	-1.12 cm
CAL073	CAL	Juneau_County	1.25 cm	2.94 ppsm	0.44 m	0.86°	1.19 cm
CAL074	CAL	Juneau_County	-3.09 cm	4.03 ppsm	0.23 m	2.67°	-2.89 cm
CAL075	CAL	Juneau_County	-0.37 cm	3.61 ppsm	0.24 m	1.72°	-0.16 cm
CAL076	CAL	Juneau_County	-2.20 cm	2.72 ppsm	0.33 m	3.24°	-1.65 cm
CAL077	CAL	Juneau_County	-0.05 cm	3.01 ppsm	0.37 m	2.16°	-0.25 cm
CAL078	CAL	Juneau_County	2.70 cm	3.82 ppsm	0.12 m	1.53°	2.50 cm
CAL079	CAL	Juneau_County	0.92 cm	2.69 ppsm	0.35 m	1.62°	0.45 cm
CAL080	CAL	Juneau_County	-0.55 cm	2.79 ppsm	0.05 m	3.30°	-1.45 cm
CAL081	CAL	Juneau_County	2.64 cm	3.22 ppsm	0.31 m	1.24°	2.76 cm
CAL082	CAL	Juneau_County	-2.53 cm	3.11 ppsm	0.17 m	1.01°	-2.63 cm
CAL083	CAL	Juneau_County	-2.09 cm	2.76 ppsm	0.03 m	5.24°	-1.78 cm
CAL084	CAL	Juneau_County	1.46 cm	2.97 ppsm	0.34 m	1.62°	1.27 cm
CAL085	CAL	Kewaunee_County	3.04 cm	2.72 ppsm	0.30 m	0.95°	3.63 cm
CAL086	CAL	Kewaunee_County	-0.29 cm	3.04 ppsm	0.21 m	0.61°	-0.19 cm
CAL087	CAL	Kewaunee_County	2.74 cm	2.90 ppsm	0.09 m	1.34°	2.68 cm
CAL088	CAL	Kewaunee_County	2.23 cm	2.37 ppsm	0.23 m	2.20°	1.35 cm
CAL089	CAL	Kewaunee_County	-0.43 cm	3.75 ppsm	0.36 m	1.81°	-0.34 cm
CAL090	CAL	Kewaunee_County	1.25 cm	2.69 ppsm	0.31 m	1.62°	1.23 cm
CAL091	CAL	Kewaunee_County	-2.44 cm	4.14 ppsm	0.11 m	1.01°	-1.61 cm
CAL092	CAL	Kewaunee_County	1.54 cm	3.93 ppsm	0.13 m	1.05°	1.44 cm
CAL093	CAL	Kewaunee_County	-2.26 cm	4.24 ppsm	0.14 m	1.72°	-2.62 cm

Control Point Breakdown (continued)

Point	Type	Project	Ground (LAS Points)				DEM Dz
			Dz	Density	Nearest	Slope	
CAL094	CAL	Kewaunee_County	-2.34 cm	3.18 ppsm	0.18 m	2.23°	-2.84 cm
CAL095	CAL	Marathon_County	3.66 cm	2.83 ppsm	0.15 m	2.86°	3.37 cm
CAL096	CAL	Marathon_County	-1.23 cm	2.69 ppsm	0.35 m	3.15°	-1.46 cm
CAL097	CAL	Marathon_County	-0.10 cm	2.62 ppsm	0.39 m	3.05°	-0.18 cm
CAL098	CAL	Marathon_County	0.45 cm	4.95 ppsm	0.07 m	1.34°	1.15 cm
CAL099	CAL	Marathon_County	-0.83 cm	2.44 ppsm	0.08 m	4.31°	-0.64 cm
CAL100	CAL	Marathon_County	-0.61 cm	3.40 ppsm	0.16 m	2.09°	-0.35 cm
CAL101	CAL	Marathon_County	1.66 cm	6.15 ppsm	0.15 m	0.86°	1.14 cm
CAL102	CAL	Marathon_County	1.16 cm	3.43 ppsm	0.22 m	1.08°	0.86 cm
CAL103	CAL	Marathon_County	1.96 cm	5.66 ppsm	0.17 m	2.29°	1.90 cm
CAL104	CAL	Marathon_County	1.23 cm	2.97 ppsm	0.50 m	1.72°	1.20 cm
CAL105	CAL	Marathon_County	1.46 cm	3.22 ppsm	0.20 m	4.10°	1.44 cm
CAL106	CAL	Marathon_County	2.53 cm	4.03 ppsm	0.16 m	1.43°	1.70 cm
CAL107	CAL	Marathon_County	3.43 cm	2.79 ppsm	0.03 m	5.32°	3.72 cm
CAL108	CAL	Marathon_County	3.65 cm	5.20 ppsm	0.11 m	4.00°	2.43 cm
CAL109	CAL	Marathon_County	0.65 cm	2.55 ppsm	0.17 m	9.43°	0.25 cm
CAL110	CAL	Marathon_County	-0.22 cm	3.43 ppsm	0.29 m	2.58°	-1.48 cm
CAL111	CAL	Marathon_County	-0.41 cm	4.21 ppsm	0.30 m	1.91°	-0.78 cm
CAL112	CAL	Marathon_County	-4.58 cm	4.00 ppsm	0.23 m	0.76°	-4.65 cm
CAL113	CAL	Marathon_County	1.16 cm	4.39 ppsm	0.14 m	1.49°	1.51 cm
CAL114	CAL	Marathon_County	-4.77 cm	4.31 ppsm	0.32 m	3.24°	-4.45 cm
CAL115	CAL	Marathon_County	-1.55 cm	2.58 ppsm	0.31 m	3.62°	-1.54 cm
CAL116	CAL	Marathon_County	-1.31 cm	2.76 ppsm	0.33 m	0.48°	-1.21 cm
CAL117	CAL	Marathon_County	-0.12 cm	2.72 ppsm	0.29 m	2.50°	-0.11 cm
CAL118	CAL	Marathon_County	-1.24 cm	3.47 ppsm	0.01 m	4.57°	-2.43 cm
CAL119	CAL	Marathon_County	0.37 cm	2.69 ppsm	0.21 m	1.24°	0.28 cm
CAL120	CAL	Marathon_County	1.51 cm	4.24 ppsm	0.23 m	1.96°	0.84 cm
CAL121	CAL	Marathon_County	-2.67 cm	3.22 ppsm	0.22 m	0.88°	-2.75 cm

Control Point Breakdown (continued)

Point	Type	Project	Ground (LAS Points)				DEM Dz
			Dz	Density	Nearest	Slope	
CAL122	CAL	Marathon_County	0.73 cm	4.31 ppsm	0.13 m	2.23°	0.68 cm
CAL123	CAL	Marathon_County	-0.29 cm	2.44 ppsm	0.26 m	0.88°	-0.70 cm
CAL124	CAL	Marathon_County	0.03 cm	4.14 ppsm	0.02 m	1.49°	-0.49 cm
CAL125	CAL	Marathon_County	-3.05 cm	4.00 ppsm	0.13 m	7.59°	-2.58 cm
CAL126	CAL	Marathon_County	0.09 cm	4.49 ppsm	0.13 m	1.72°	-0.12 cm
CAL127	CAL	Marathon_County	-1.46 cm	2.48 ppsm	0.23 m	1.76°	-1.26 cm
CAL128	CAL	Marathon_County	0.38 cm	2.62 ppsm	0.03 m	1.43°	-0.64 cm
CAL129	CAL	Marathon_County	-2.32 cm	3.86 ppsm	0.22 m	1.28°	-2.34 cm
CAL130	CAL	Marathon_County	-4.86 cm	2.86 ppsm	0.21 m	7.92°	-4.79 cm
CAL131	CAL	Marathon_County	-2.98 cm	2.83 ppsm	0.27 m	1.08°	-2.72 cm
CAL132	CAL	Marathon_County	0.65 cm	2.69 ppsm	0.14 m	0.95°	0.79 cm
CAL133	CAL	Marathon_County	0.16 cm	2.83 ppsm	0.17 m	2.23°	0.70 cm
CAL134	CAL	Marinette_County	0.49 cm	4.10 ppsm	0.04 m	1.62°	1.38 cm
CAL135	CAL	Marinette_County	-0.08 cm	4.14 ppsm	0.13 m	1.43°	-0.88 cm
CAL136	CAL	Marinette_County	-0.17 cm	3.64 ppsm	0.10 m	1.28°	-0.30 cm
CAL137	CAL	Marinette_County	1.51 cm	3.18 ppsm	0.12 m	2.20°	0.35 cm
CAL138	CAL	Marinette_County	3.16 cm	5.48 ppsm	0.22 m	3.72°	3.64 cm
CAL139	CAL	Marinette_County	-0.60 cm	3.50 ppsm	0.37 m	2.63°	-0.50 cm
CAL140	CAL	Marinette_County	-1.36 cm	4.10 ppsm	0.35 m	1.62°	-1.60 cm
CAL141	CAL	Marinette_County	6.34 cm	3.93 ppsm	0.24 m	1.34°	6.37 cm
CAL142	CAL	Marinette_County	-1.42 cm	3.89 ppsm	0.06 m	1.28°	-1.45 cm
CAL143	CAL	Marinette_County	4.46 cm	3.64 ppsm	0.37 m	2.83°	4.22 cm
CAL144	CAL	Marinette_County	-4.05 cm	3.93 ppsm	0.06 m	3.84°	-3.08 cm
CAL145	CAL	Marinette_County	-0.27 cm	4.88 ppsm	0.19 m	0.67°	-0.13 cm
CAL146	CAL	Marinette_County	2.73 cm	5.41 ppsm	0.13 m	1.72°	3.20 cm
CAL147	CAL	Marinette_County	0.55 cm	4.31 ppsm	0.19 m	3.17°	0.47 cm
CAL148	CAL	Marinette_County	1.23 cm	4.14 ppsm	0.28 m	4.51°	0.91 cm
CAL149	CAL	Marinette_County	2.38 cm	4.17 ppsm	0.27 m	2.50°	1.88 cm

Control Point Breakdown (continued)

Point	Type	Project	Ground (LAS Points)				DEM Dz
			Dz	Density	Nearest	Slope	
CAL150	CAL	Marinette_County	-1.42 cm	3.71 ppsm	0.23 m	1.49°	-1.26 cm
CAL151	CAL	Marinette_County	-2.38 cm	4.39 ppsm	0.21 m	0.86°	-2.01 cm
CAL152	CAL	Marinette_County	-0.51 cm	3.86 ppsm	0.14 m	1.15°	-0.73 cm
CAL153	CAL	Marinette_County	3.55 cm	4.74 ppsm	0.18 m	1.82°	3.11 cm
CAL154	CAL	Marinette_County	3.09 cm	4.10 ppsm	0.12 m	1.82°	3.22 cm
CAL155	CAL	Marinette_County	2.18 cm	3.54 ppsm	0.21 m	1.05°	2.81 cm
CAL156	CAL	Marinette_County	-1.22 cm	3.75 ppsm	0.20 m	1.89°	-1.29 cm
CAL157	CAL	Marinette_County	0.41 cm	3.25 ppsm	0.30 m	1.72°	0.37 cm
CAL158	CAL	Marinette_County	0.98 cm	3.78 ppsm	0.24 m	0.67°	1.05 cm
CAL159	CAL	Marinette_County	-3.44 cm	4.00 ppsm	0.30 m	0.81°	-3.44 cm
CAL160	CAL	Marinette_County	-0.79 cm	4.28 ppsm	0.23 m	1.35°	-0.88 cm
CAL161	CAL	Marinette_County	1.07 cm	3.29 ppsm	0.30 m	2.23°	1.38 cm
CAL162	CAL	Marinette_County	1.49 cm	4.03 ppsm	0.17 m	0.74°	1.04 cm
CAL163	CAL	Marinette_County	-1.28 cm	3.75 ppsm	0.36 m	0.74°	-0.77 cm
CAL164	CAL	Marinette_County	-0.91 cm	5.62 ppsm	0.11 m	2.67°	-0.35 cm
CAL165	CAL	Marinette_County	-1.64 cm	3.57 ppsm	0.11 m	2.83°	-1.91 cm
CAL166	CAL	Marinette_County	0.17 cm	4.07 ppsm	0.14 m	1.01°	-0.32 cm
CAL167	CAL	Marinette_County	1.36 cm	3.61 ppsm	0.25 m	1.05°	1.18 cm
CAL168	CAL	Marinette_County	-0.31 cm	4.95 ppsm	0.04 m	1.69°	-0.60 cm
CAL169	CAL	Marinette_County	-3.12 cm	3.75 ppsm	0.10 m	1.15°	-2.57 cm