

CompassData®

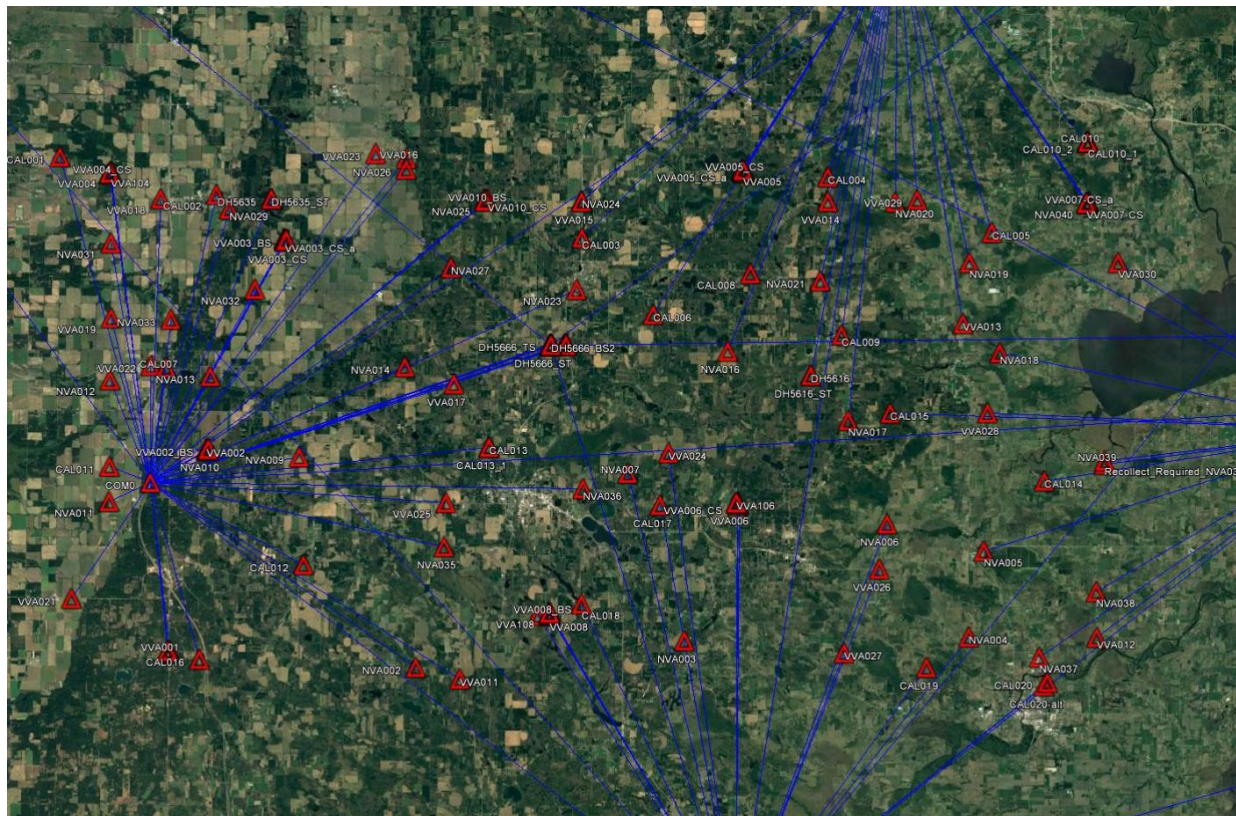
www.compassdatainc.com

Compass Data Inc

7074 S. Revere Parkway
Centennial, Colorado 80112
USA

www.compassdatainc.com
solutions@compassdatainc.com

Project File Data	Coordinate System
Name: 5319_Waushara_v3.vce	Name: United States/State Plane 1983
Size: 384 KB	Datum: NAD 1983 (Conus)
Modified: 11/3/2017 9:35:28 AM (UTC:-6)	Zone: Wisconsin South 4803
Time zone: Mountain Standard Time	Geoid: GEOID12B (Conus)



Network Adjustment Report

Adjustment Settings

Set-Up Errors

GNSS

Error in Height of Antenna: 0.003 m

Centering Error: 0.003 m

Terrestrial

Error in Height of Instrument 0.003 m

Error in Height of Target 0.003 m

Covariance Display

Horizontal:

Propagated Linear Error [E]: U.S.

Constant Term [C]: 0.000 m

Scale on Linear Error [S]: 1.960

Three-Dimensional

Propagated Linear Error [E]: U.S.

Constant Term [C]: 0.000 m

Scale on Linear Error [S]: 1.960

Adjustment Statistics

Number of Iterations for Successful Adjustment: 3
Network Reference Factor: 1.01
Chi Square Test (95%): Passed
Precision Confidence Level: 95%
Degrees of Freedom: 429

Post Processed Vector Statistics

Reference Factor: 0.77
Redundancy Number: 38.00
A Priori Scalar: 1.00

RTK Vector Statistics

Reference Factor: 0.93
Redundancy Number: 368.98
A Priori Scalar: 1.00

Total Station Observation Statistics

Horizontal Circle Reading:	Reference Factor: 2.04	Redundancy Number: 1.83	A Priori Scalar: 1.00
Vertical Angle:	Reference Factor: 0.77	Redundancy Number: 6.93	A Priori Scalar: 1.00
Slope Distance:	Reference Factor: 2.48	Redundancy Number: 13.26	A Priori Scalar: 1.81

Control Coordinate Comparisons

Values shown are control coordinates minus adjusted coordinates.

Point ID	Δ Easting (Meter)	Δ Northing (Meter)	Δ Height (Meter)
WMTW NAD83(2011) Epoch 2010 NGS_DS	-0.006	-0.002	0.000

Control Point Constraints

Point ID	Type	East σ (Meter)	North σ (Meter)	Height σ (Meter)
MFLD NAD83(2011) Epoch 2010 NGS_DS	Global	Fixed	Fixed	Fixed
WIAB NAD83(2011) Epoch 2010 NGS_DS	Global	Fixed	Fixed	Fixed
WIPR NAD83(2011) Epoch 2010 NGS_DS	Global	Fixed	Fixed	Fixed
Fixed = 0.000001(Meter)				

Adjusted Grid Coordinates

Point ID	Easting Error (Meter)	Northing Error (Meter)	Elevation Error (Meter)
CAL001	0.009	0.010	0.014
CAL002	0.008	0.010	0.014
CAL003	0.009	0.010	0.019

CAL004	0.009	0.009	0.012
CAL005	0.008	0.009	0.014
CAL006	0.010	0.010	0.018
CAL007	0.008	0.009	0.010
CAL008	0.009	0.012	0.017
CAL009	0.009	0.014	0.022
CAL010	0.009	0.009	0.014
CAL010_1	0.009	0.010	0.014
CAL010_2	0.008	0.009	0.014
CAL010_3	0.009	0.011	0.016
CAL011	0.008	0.008	0.010
CAL012	0.009	0.010	0.015
CAL013	0.009	0.010	0.014
CAL013_1	0.009	0.010	0.013
CAL014	0.009	0.010	0.017
CAL015	0.011	0.015	0.026
CAL016	0.008	0.009	0.012
CAL017	0.008	0.011	0.017
CAL018	0.011	0.015	0.027
CAL019	0.009	0.010	0.018
CAL020	0.008	0.010	0.015

CAL020-alt	0.009	0.013	0.017
COMO	0.005	0.005	0.005
DH5616	0.009	0.012	0.019
DH5635	0.008	0.009	0.014
DH5666	0.007	0.008	0.011
DH5666_BS	0.009	0.011	0.011
DH5666_BS2	0.009	0.008	0.010
DH5666_CS	0.009	0.012	0.018
DH5666_ST	0.006	0.007	0.009
DH5666_TS	0.009	0.008	0.010
DH5666_TS_Check	0.011	0.012	0.011
DH5666_TS2	0.009	0.008	0.011
NVA001	0.008	0.010	0.011
NVA002	0.009	0.009	0.015
NVA003	0.007	0.009	0.012
NVA004	0.008	0.009	0.017
NVA005	0.009	0.010	0.018
NVA006	0.008	0.008	0.015
NVA007	0.008	0.009	0.015
NVA008	0.007	0.009	0.011
NVA009	0.008	0.009	0.012

NVA010	0.008	0.008	0.010
NVA011	0.008	0.008	0.010
NVA012	0.008	0.008	0.011
NVA013	0.008	0.009	0.011
NVA014	0.010	0.012	0.020
NVA015	0.009	0.011	0.012
NVA016	0.009	0.010	0.015
NVA017	0.009	0.010	0.016
NVA018	0.009	0.009	0.013
NVA019	0.009	0.010	0.015
NVA020	0.009	0.009	0.013
NVA021	0.009	0.011	0.016
NVA022	0.010	0.010	0.014
NVA023	0.009	0.009	0.017
NVA024	0.009	0.010	0.018
NVA025	0.009	0.010	0.012
NVA026	0.009	0.012	0.017
NVA027	0.009	0.010	0.015
NVA028	0.008	0.009	0.011
NVA029	0.008	0.009	0.014
NVA030	0.009	0.010	0.013

NVA031	0.008	0.011	0.015
NVA032	0.008	0.009	0.012
NVA033	0.008	0.009	0.011
NVA034	0.008	0.010	0.017
NVA035	0.009	0.010	0.018
NVA036	0.009	0.010	0.016
NVA037	0.009	0.010	0.014
NVA038	0.009	0.010	0.014
NVA039	0.009	0.009	0.014
NVA040	0.009	0.010	0.011
Recollect Required NVA039	0.009	0.009	0.014
VVA001 TS	0.008	0.009	0.011
VVA002 BS	0.008	0.008	0.010
VVA002 CS	0.008	0.009	0.013
VVA003 BS	0.008	0.009	0.011
VVA003 CS	0.009	0.009	0.014
VVA004 BS	0.009	0.010	0.013
VVA004 CS	0.009	0.012	0.017
VVA005 BS	0.012	0.013	0.024
VVA005 BS 3	0.011	0.011	0.015
VVA005 CS	0.009	0.011	0.016

VVA006_BS	0.007	0.010	0.011
VVA006_CS	0.009	0.010	0.017
VVA007-BS	0.009	0.010	0.011
VVA007-CS	0.008	0.011	0.012
VVA008_BS	0.008	0.008	0.010
VVA008_CS	0.008	0.008	0.013
VVA008_TS	0.008	0.008	0.010
VVA009_BSa	0.008	0.011	0.011
VVA009_CS	0.009	0.011	0.013
VVA010_BS	0.009	0.010	0.012
VVA010_CS	0.009	0.011	0.015
VVA011	0.009	0.009	0.015
VVA012	0.009	0.010	0.013
VVA013	0.009	0.010	0.015
VVA014	0.009	0.009	0.014
VVA015	0.009	0.010	0.017
VVA016	0.009	0.012	0.017
VVA017	0.008	0.010	0.014
VVA018	0.008	0.010	0.013
VVA019	0.008	0.009	0.012
VVA020	0.008	0.009	0.012

VVA021	0.008	0.009	0.012
VVA022	0.008	0.009	0.011
VVA023	0.009	0.012	0.017
VVA024	0.008	0.009	0.015
VVA025	0.009	0.010	0.015
VVA026	0.008	0.008	0.013
VVA027	0.007	0.009	0.012
VVA028	0.009	0.009	0.014
VVA029	0.009	0.009	0.014
VVA030	0.010	0.012	0.019
WACA	0.004	0.004	0.005
WINE	0.005	0.005	0.005
WMTW_NAD83(2011)_Epoch_2010_NGS_DS	0.005	0.005	0.006

Error Ellipse Components

Point ID	Semi-major axis (Meter)	Semi-minor axis (Meter)	Azimuth
CAL001	0.012	0.011	163°
CAL002	0.012	0.011	4°
CAL003	0.013	0.012	178°
CAL004	0.012	0.011	160°
CAL005	0.012	0.011	179°
CAL006	0.013	0.012	23°
CAL007	0.011	0.010	172°
CAL008	0.015	0.011	172°
CAL009	0.018	0.011	174°
CAL010	0.012	0.011	158°
CAL010_1	0.012	0.011	173°
CAL010_2	0.012	0.011	172°
CAL010_3	0.014	0.011	174°
CAL011	0.010	0.010	13°
CAL012	0.012	0.011	178°
CAL013	0.013	0.011	3°
CAL013_1	0.013	0.011	169°
CAL014	0.012	0.011	1°

CAL015	0.019	0.014	173°
CAL016	0.011	0.010	174°
CAL017	0.013	0.010	176°
CAL018	0.019	0.014	14°
CAL019	0.013	0.011	165°
CAL020	0.013	0.010	1°
CAL020-alt	0.016	0.012	177°
COM0	0.006	0.006	89°
DH5616	0.015	0.012	172°
DH5635	0.012	0.011	1°
DH5666	0.010	0.009	180°
DH5666_BS	0.013	0.011	11°
DH5666_BS2	0.012	0.010	62°
DH5666_CS	0.015	0.012	177°
DH5666_ST	0.008	0.007	25°
DH5666_TS	0.011	0.010	69°
DH5666_TS_Check	0.015	0.013	162°
DH5666_TS2	0.011	0.010	90°
NVA001	0.013	0.010	171°
NVA002	0.011	0.011	177°
NVA003	0.012	0.009	176°

NVA004	0.011	0.010	165°
NVA005	0.013	0.011	175°
NVA006	0.010	0.010	4°
NVA007	0.011	0.009	9°
NVA008	0.012	0.009	167°
NVA009	0.011	0.010	173°
NVA010	0.010	0.010	0°
NVA011	0.010	0.010	22°
NVA012	0.011	0.010	6°
NVA013	0.011	0.010	170°
NVA014	0.015	0.012	7°
NVA015	0.014	0.011	178°
NVA016	0.013	0.011	176°
NVA017	0.013	0.012	16°
NVA018	0.012	0.011	17°
NVA019	0.012	0.011	5°
NVA020	0.012	0.011	154°
NVA021	0.014	0.011	173°
NVA022	0.012	0.012	155°
NVA023	0.012	0.011	3°
NVA024	0.013	0.012	175°

NVA025	0.012	0.011	159°
NVA026	0.015	0.011	172°
NVA027	0.012	0.011	3°
NVA028	0.011	0.010	2°
NVA029	0.012	0.010	4°
NVA030	0.013	0.012	174°
NVA031	0.013	0.011	175°
NVA032	0.011	0.010	3°
NVA033	0.011	0.010	178°
NVA034	0.013	0.010	178°
NVA035	0.012	0.011	172°
NVA036	0.013	0.011	8°
NVA037	0.013	0.011	173°
NVA038	0.012	0.011	170°
NVA039	0.012	0.011	153°
NVA040	0.012	0.011	156°
Recollect Required NVA039	0.011	0.011	6°
VVA001_TS	0.012	0.010	171°
VVA002_BS	0.010	0.010	179°
VVA002_CS	0.011	0.010	174°
VVA003_BS	0.011	0.010	0°

VVA003_CS	0.012	0.011	148°
VVA004_BS	0.013	0.011	167°
VVA004_CS	0.015	0.011	174°
VVA005_BS	0.016	0.015	167°
VVA005_BS_3	0.014	0.013	17°
VVA005_CS	0.014	0.011	170°
VVA006_BS	0.012	0.009	167°
VVA006_CS	0.013	0.011	154°
VVA007-BS	0.013	0.011	160°
VVA007-CS	0.014	0.010	175°
VVA008_BS	0.010	0.009	61°
VVA008_CS	0.010	0.010	15°
VVA008_TS	0.010	0.009	53°
VVA009_BSa	0.014	0.010	179°
VVA009_CS	0.013	0.011	174°
VVA010_BS	0.012	0.010	157°
VVA010_CS	0.013	0.011	172°
VVA011	0.012	0.011	7°
VVA012	0.012	0.011	171°
VVA013	0.013	0.011	7°
VVA014	0.012	0.011	153°

VVA015	0.013	0.011	170°
VVA016	0.015	0.011	172°
VVA017	0.012	0.010	5°
VVA018	0.013	0.011	4°
VVA019	0.011	0.010	176°
VVA020	0.012	0.010	171°
VVA021	0.011	0.010	10°
VVA022	0.011	0.010	175°
VVA023	0.015	0.011	172°
VVA024	0.012	0.010	4°
VVA025	0.012	0.011	167°
VVA026	0.010	0.010	19°
VVA027	0.011	0.009	170°
VVA028	0.012	0.011	14°
VVA029	0.011	0.011	163°
VVA030	0.014	0.012	177°
WACA	0.005	0.005	85°
WINE	0.006	0.006	84°
WMTW_NAD83(2011)_Epoch_2010_NGS_DS	0.006	0.006	44°