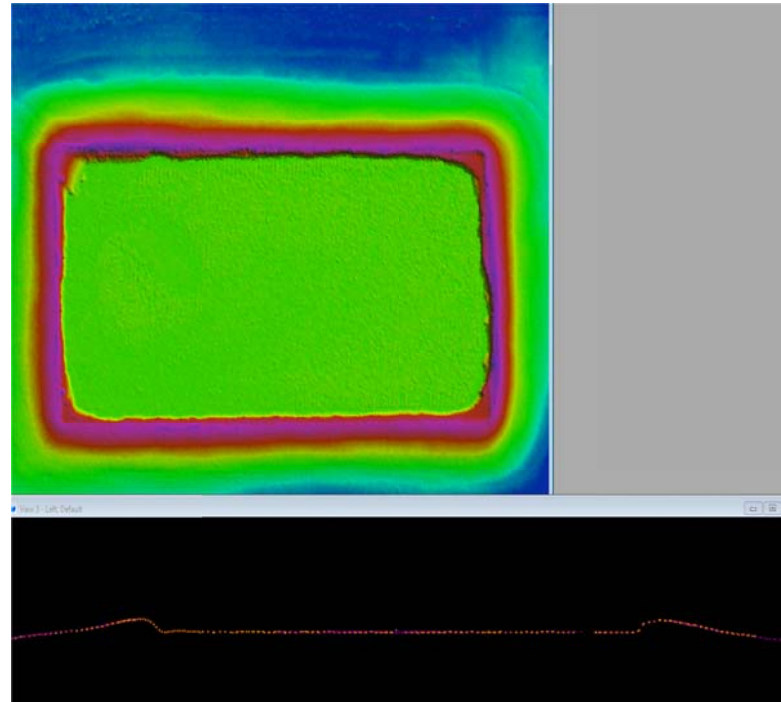




QC Call: Lake not hydro-flattened correctly (FID 3 in Errors shape file)



QSI Response: There was no water body present at the time of LIDAR collection. The points inside of the rectangular feature hold consistent elevation values, and there are no data voids delineating the possibility of a water body. There will be **no change** to this feature.





QC Call: River not connected where bridge was removed (FID 2 in *Errors* shape file)

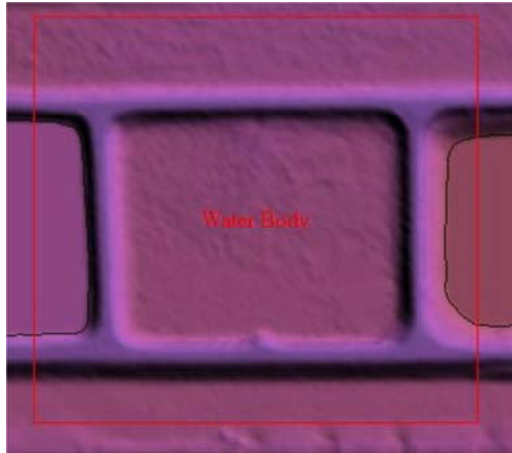


QSI Response: Hydro breakline was improperly collected. We **will correct** the breakline attribution, as well as connect the features through the bridge. This will show a continuous double line drain feature, with monotonic elevations. The raster DEM and Contours will be regenerated to show the change to the final bare earth surface.

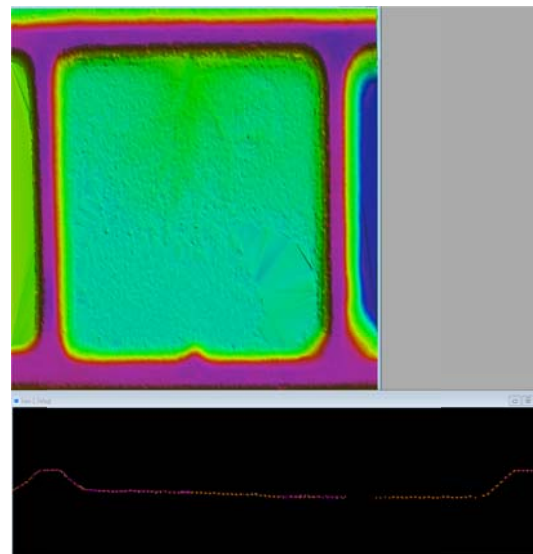




QC Call: Center Lake not hydro-flattened (FID 0 in *Errors* shape file)



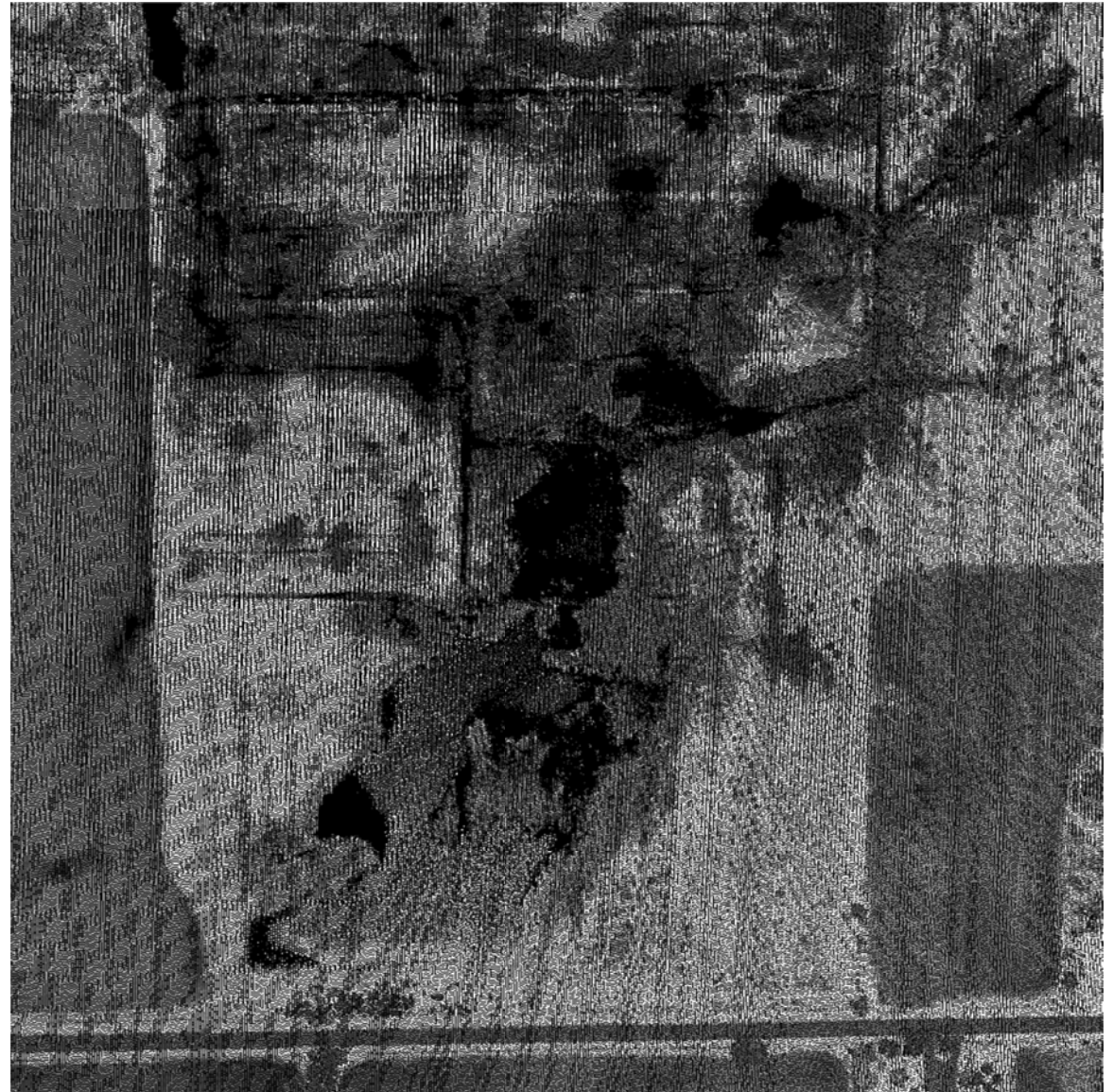
QSI Response: The water body at time of LIDAR collection is less than 2 acres in size. The points to the immediate north of the water feature show elevation change to the magnitude of 1-2'. This feature **will not be collected** because it is inside of the collection specifications for hydrographic features.

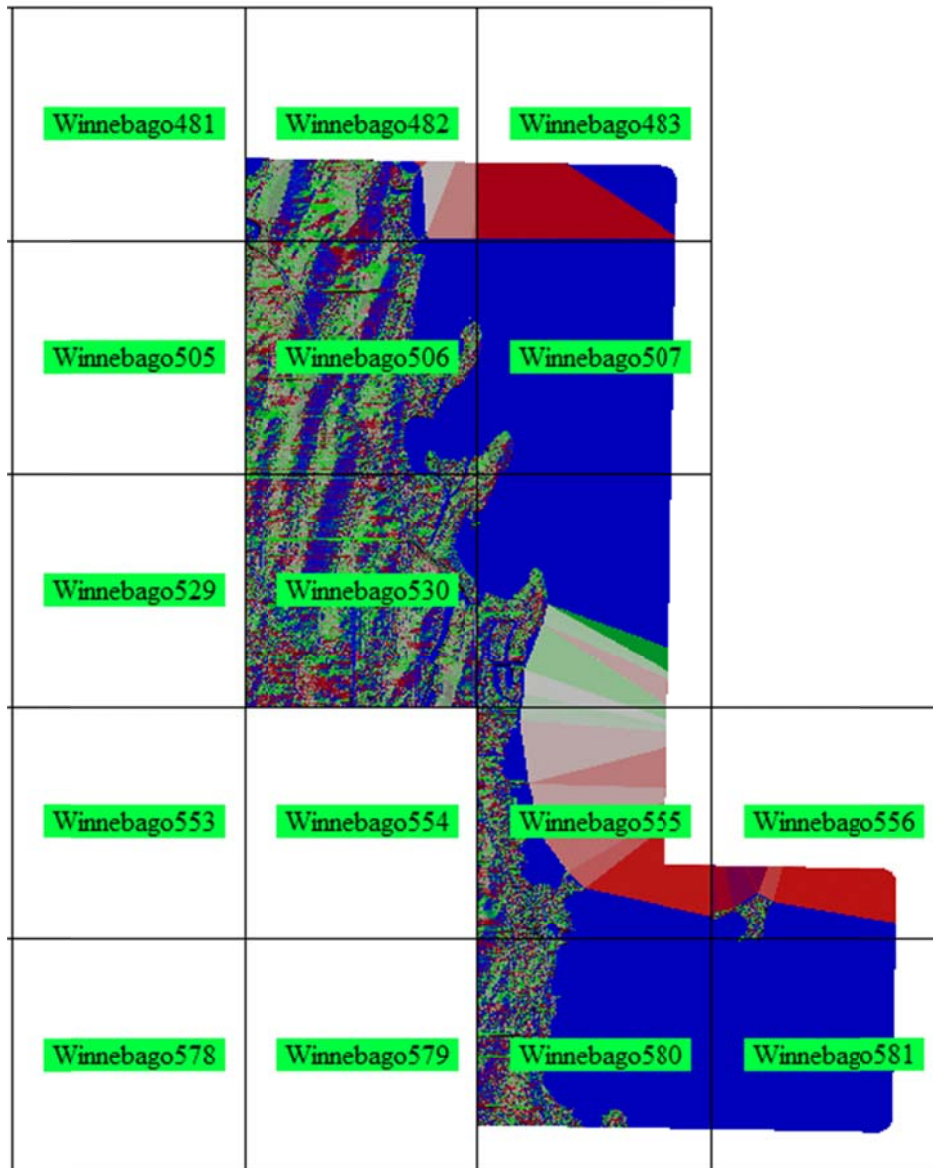




QC Call: Water body not hydro-flattened (FID 1 in *Errors* shape file)

QSI Response: As the intensity image suggests, LIDAR data voids delineate the presence of a water body that is at least 2 acres in size. **We will collect** a Lake_Pond breakline feature at a consistent elevation. The raster DEM and Contours will be regenerated to show the change to the final bare earth surface.





QC Call: Lake not hydro-flattened correctly (two features with two different elevations). (FID 4 in *Errors* shape file)

QC Call: DEM tiles 556 and 581 do not project with tiling scheme (different False Eastings and False Northings in the projection parameters).

OSI Response: **We will recreate** the ERDAS Imagine files for the following tiles, which will correct both issues. We are submitting a few more tiles for this call, to ensure that this area is flattened properly.

- Winnebago-482
- Winnebago-483
- Winnebago-506
- Winnebago-507
- Winnebago-530
- Winnebago-531
- Winnebago-555
- Winnebago-556
- Winnebago-580
- Winnebago-581



QC Call: Metadata Review – Not Accepted (Pages 5 & 6 in *LiDAR Quality Assessment Report*)

- Spatial Reference is missing Grid System for all metadata files. See Las Spec 1.2, Appendix 3, page 39.

QSI Response: The Metadata files will be corrected to be compliant with Las Spec 1.2, Appendix 3