

Elevation QC Report

Project: California_Central_Coast_Lidar_2011

Contractor: Digital Mapping INC.

Data Delivery Date: 04/11/2011

Date Data Reviewed: 04/11/2011 - 04

Reviewer: Eric Jaramillo

Total Square Miles Reviewed: 2434.58 sq

Elevation Type: LIDAR **Format:** .img **Grid Spacing:** 10 feet **Tile size:** 12.000 x 8.000

Projection: SPCS **Zone:** California Zone 3 and 4 **Datum:** NAD83 **Units:** Feet

Licensing: Public Domain **Metadata:** Project Level

Materials Received:

Ground Control placement report,
Block 1 and 2 dem .img files
Block 1 and 2 classified .las files
Block 1 and 2 TIN .adf files
Metadata
Raw Lidar data .las files
Shape files
Waterbodies and breaklines

Vertical Accuracy Test Performed: No **Test Point Source:** None

RMSE:

Vertical Accuracy Test Notes:

No control sent.

QC Review Summary:

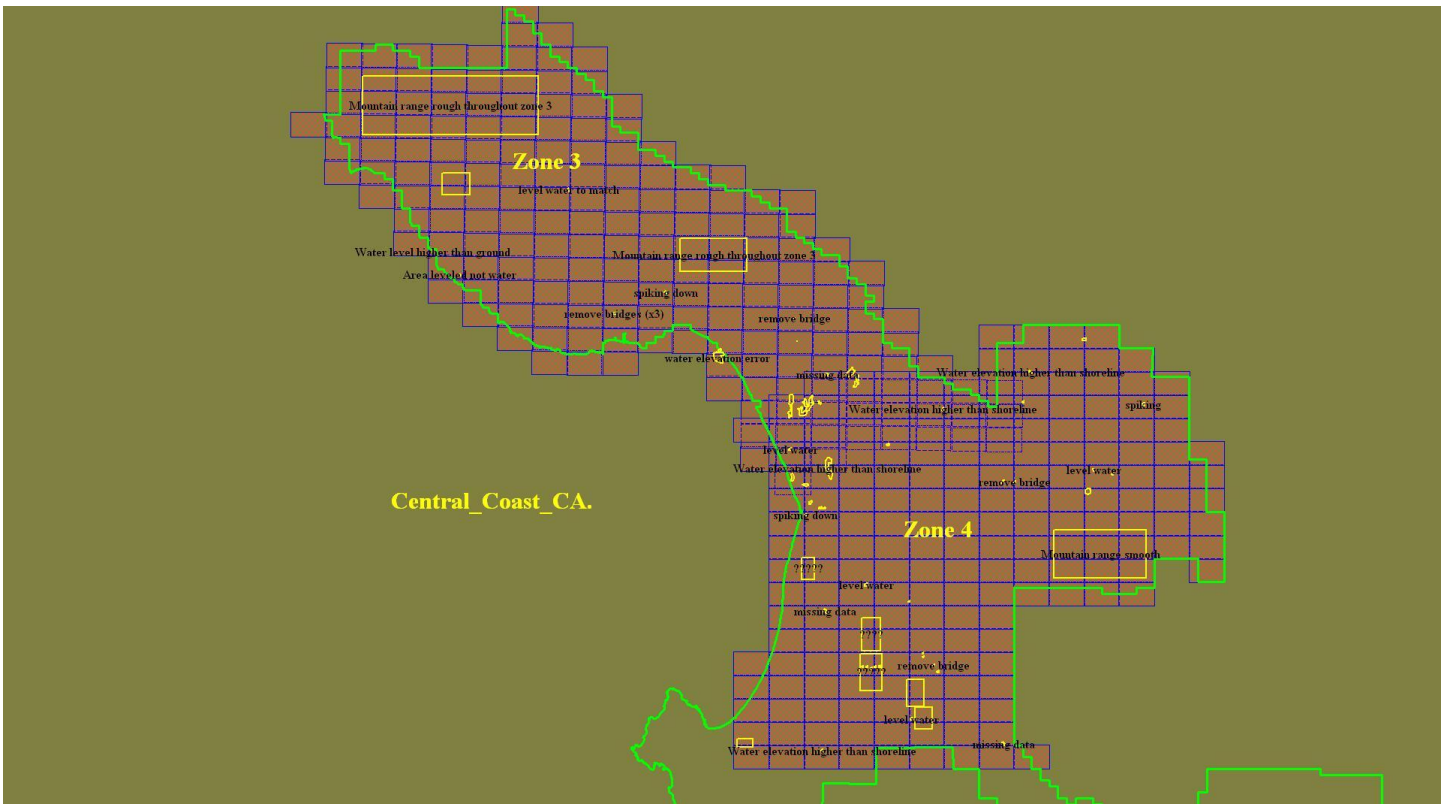
All of California Central Coast 10 feet Lidar data was reviewed. This data was brought into Global Mapper as .img files for a QA/QC. Errors found throughout this project are water elevations not leveled, water elevations higher than the shoreline, spiking up and down, bridges not removed, lines in the data not sure what they are, mountain ranges in zone 3 quilting, missing data and area not water but leveled. These errors need to be fixed by the contractor before we can accept this data, we also need the control shape file and the intensity files for this project.

See JPEGs and document below

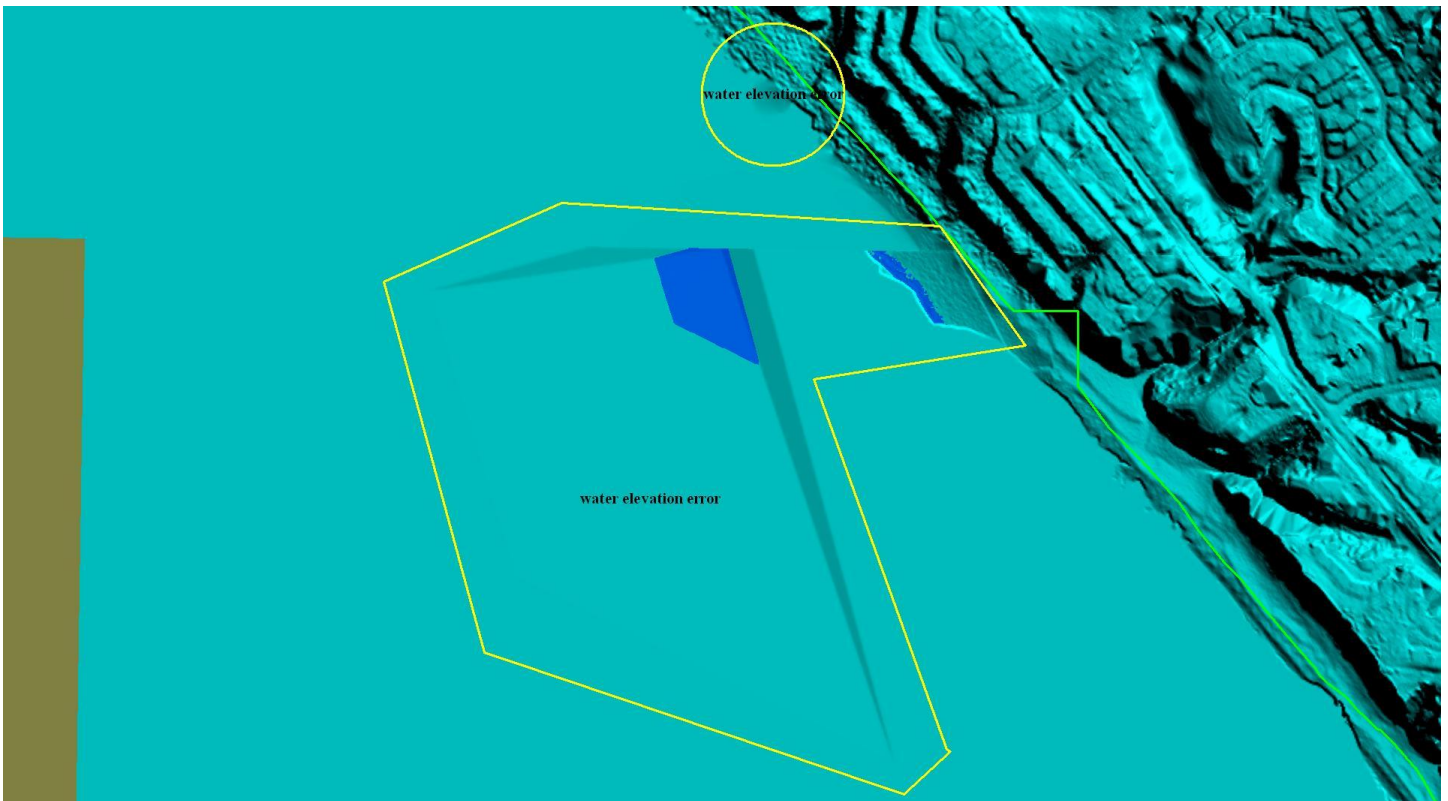
Conclusions:

1. 95% of Artifacts removed
2. 95% of vegetation penetrated
3. 98% of bldgs removed

California Central Coast

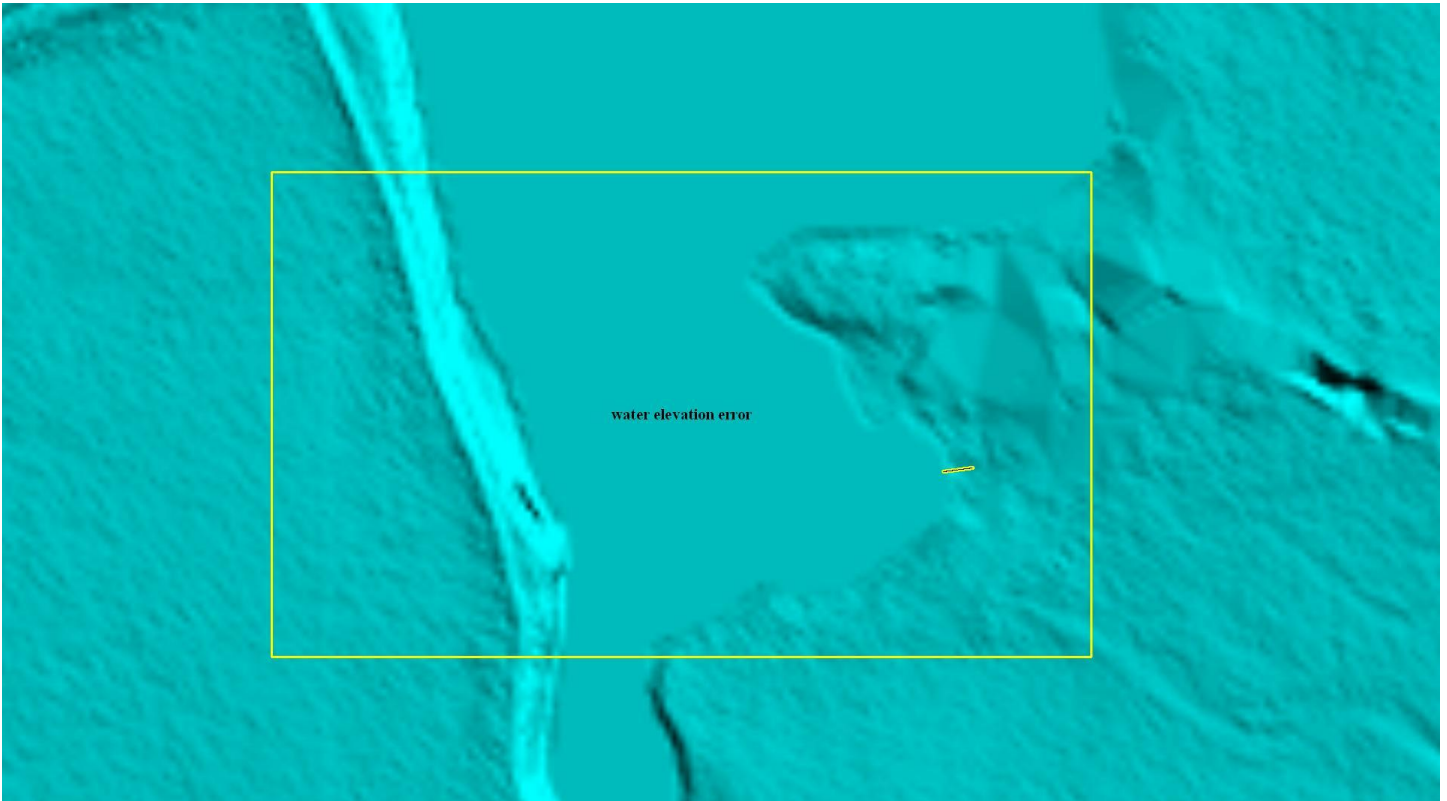


Water elevation not leveled example WATER ELEVATION FIXED



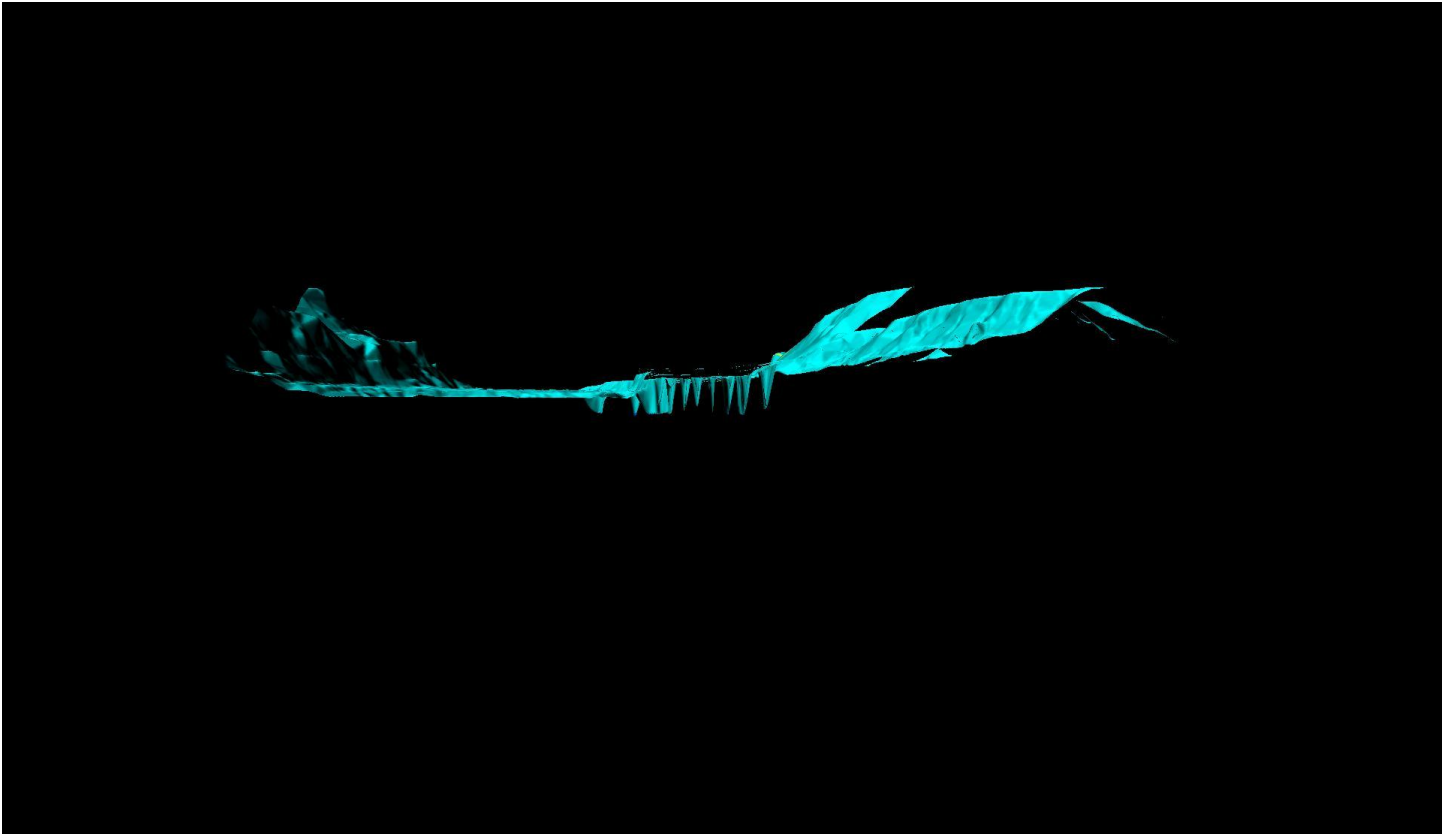
Water elevation higher then the shoreline example

WATER ELEVATION FIXED (ALL LAKES

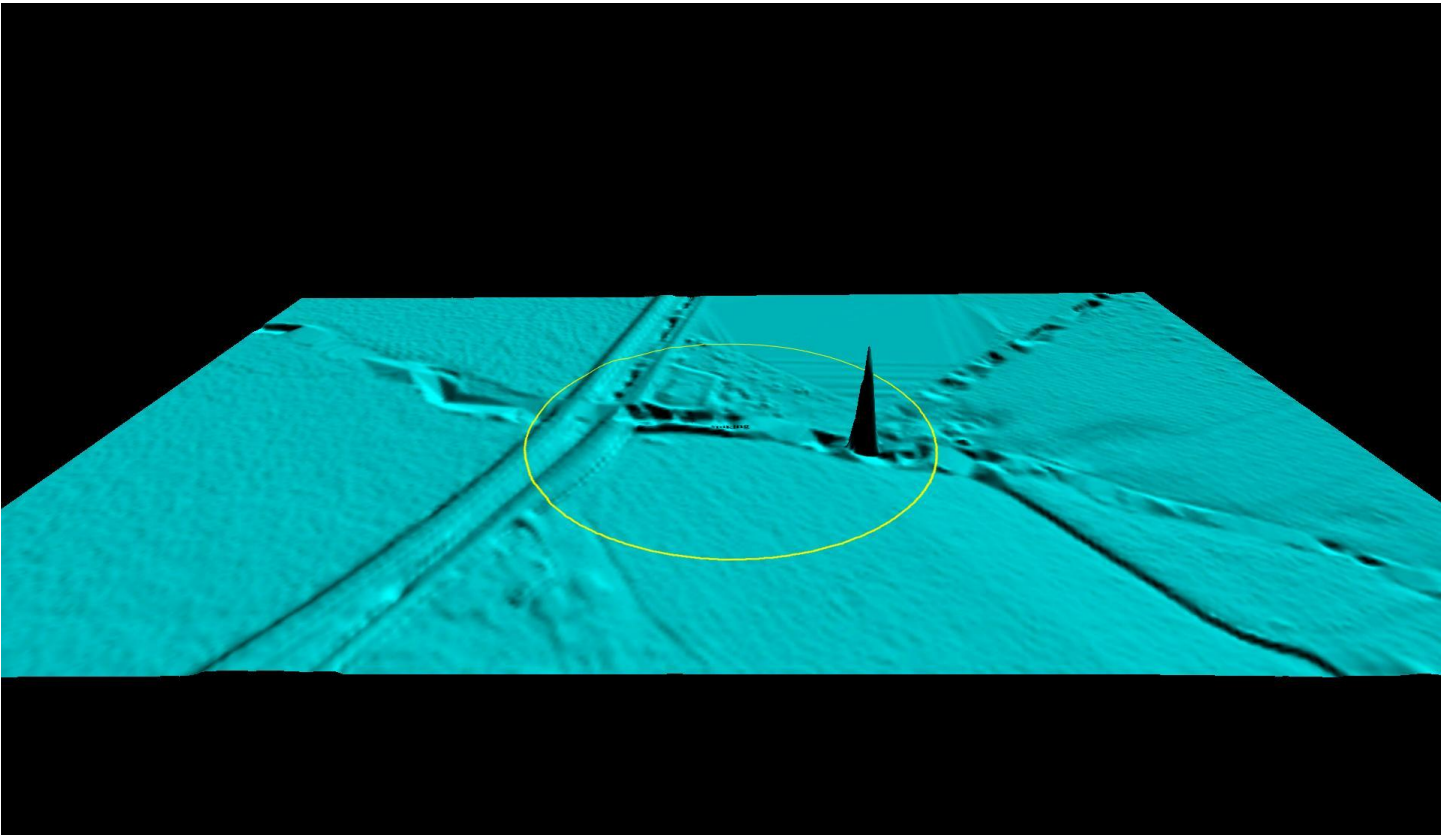


Spiking down example

ALL SPIKING DOWN AND UP FIXED

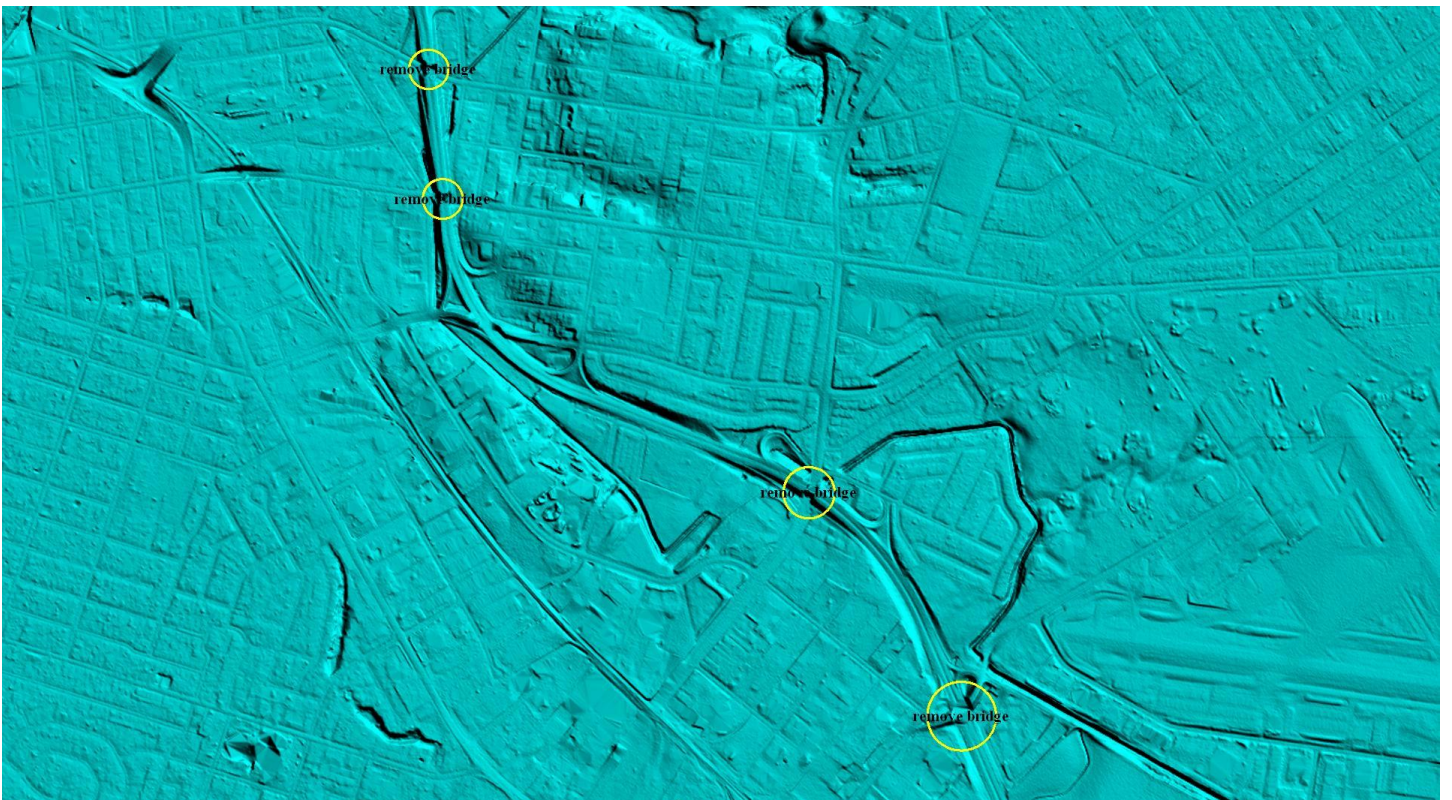


Spiking up



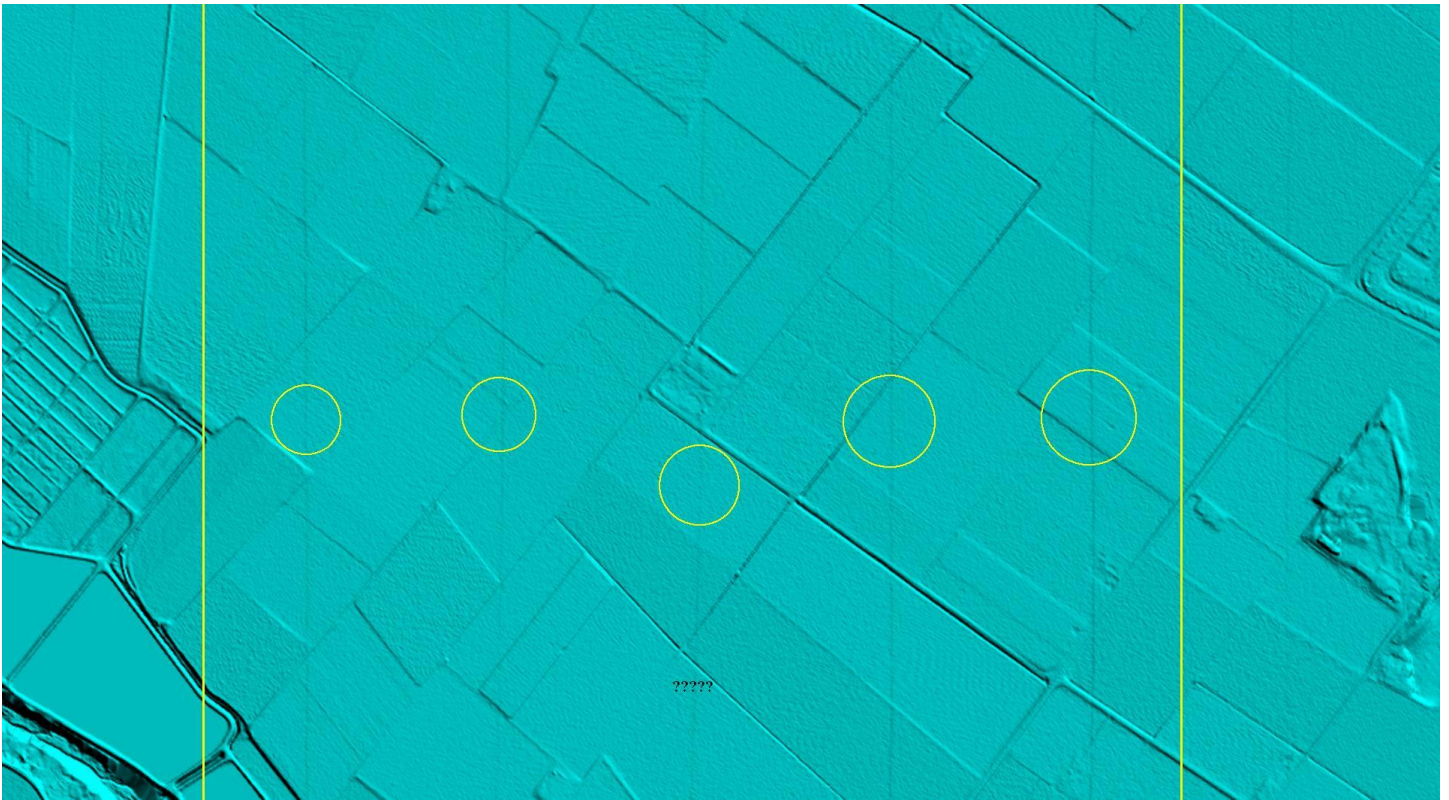
Remove bridges example

ALL BRIDGES REMOVED



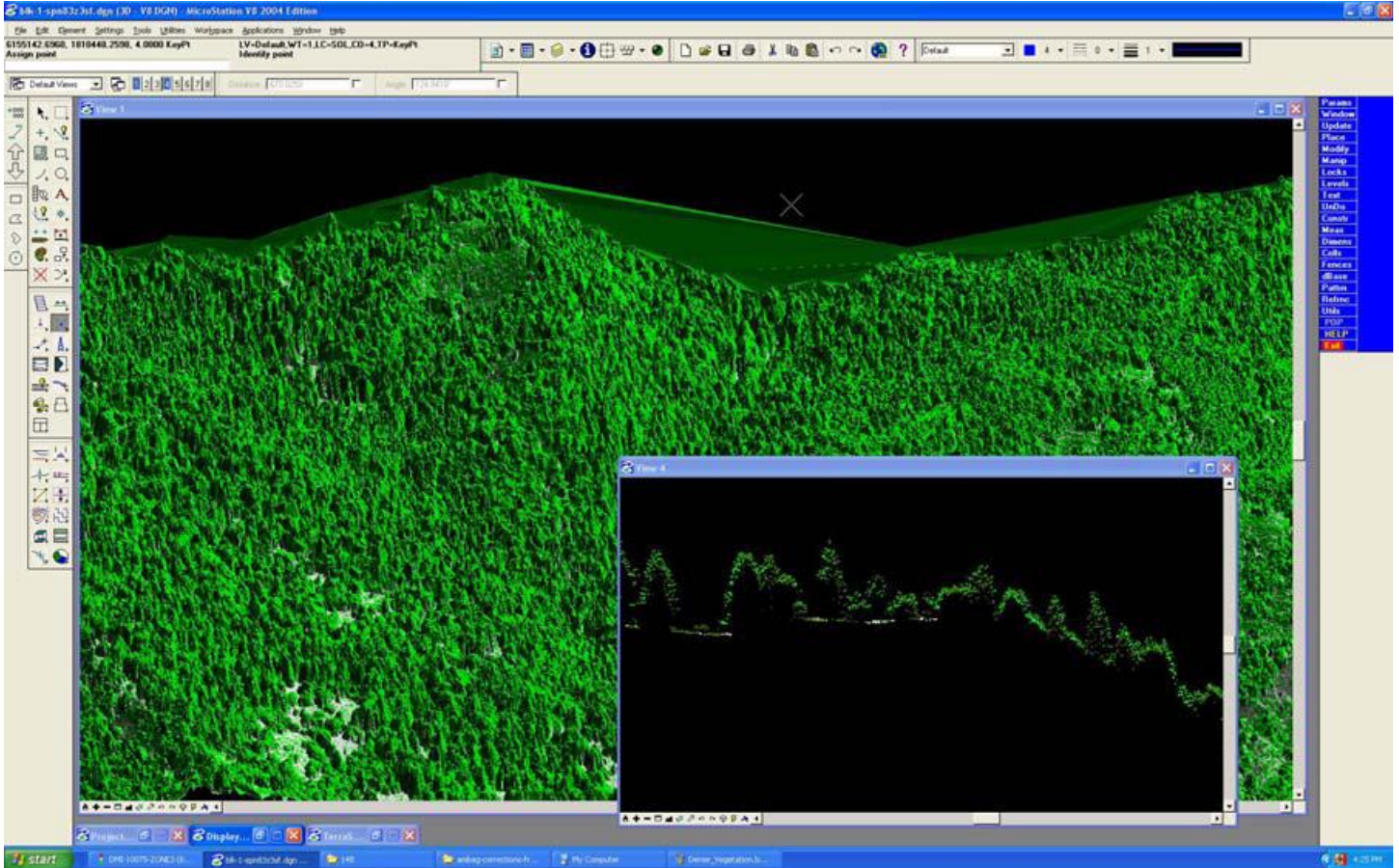
Not sure what these lines are zone 4 example

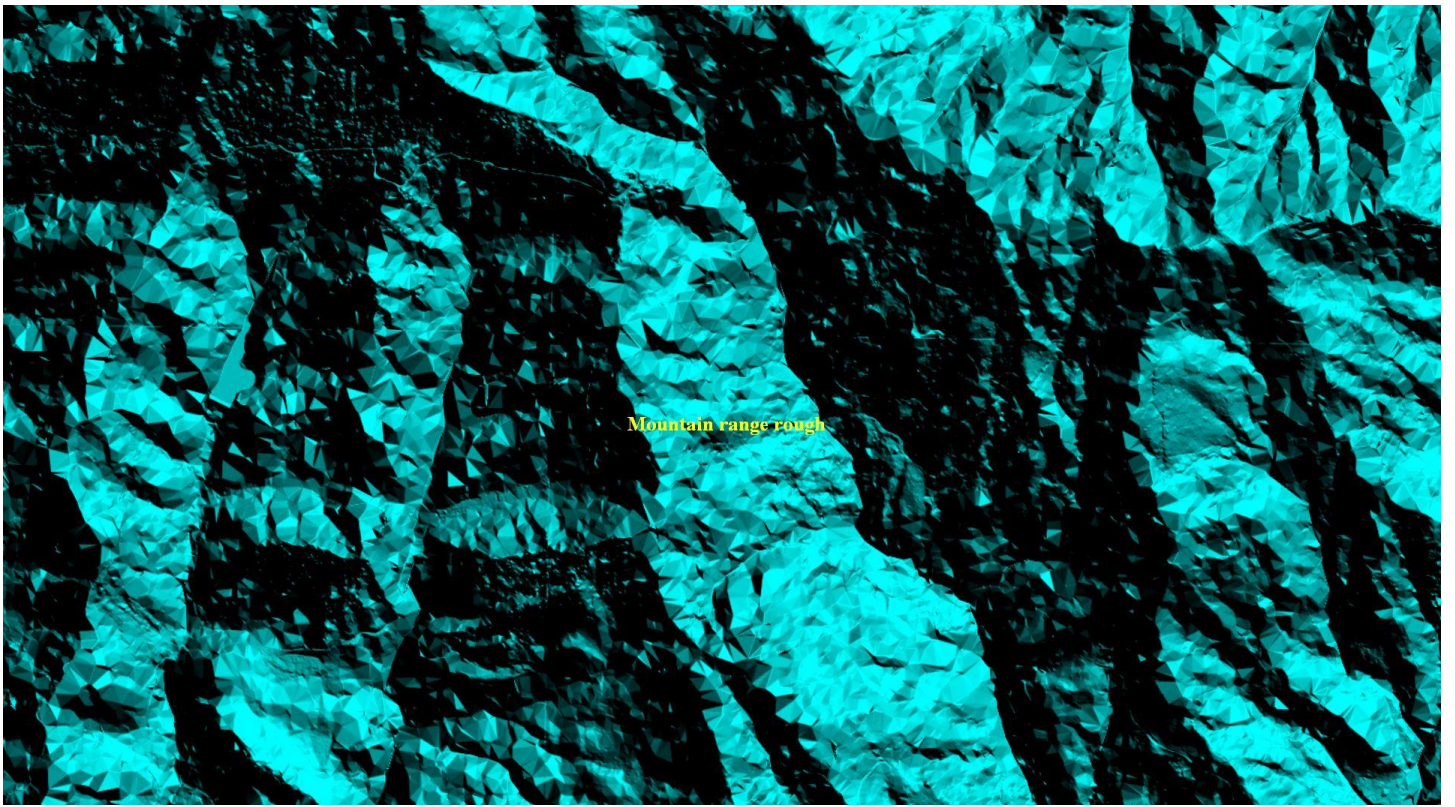
IT IS FLIGHT TIE LINE AND MEET ELEVATION THE ACCURACY



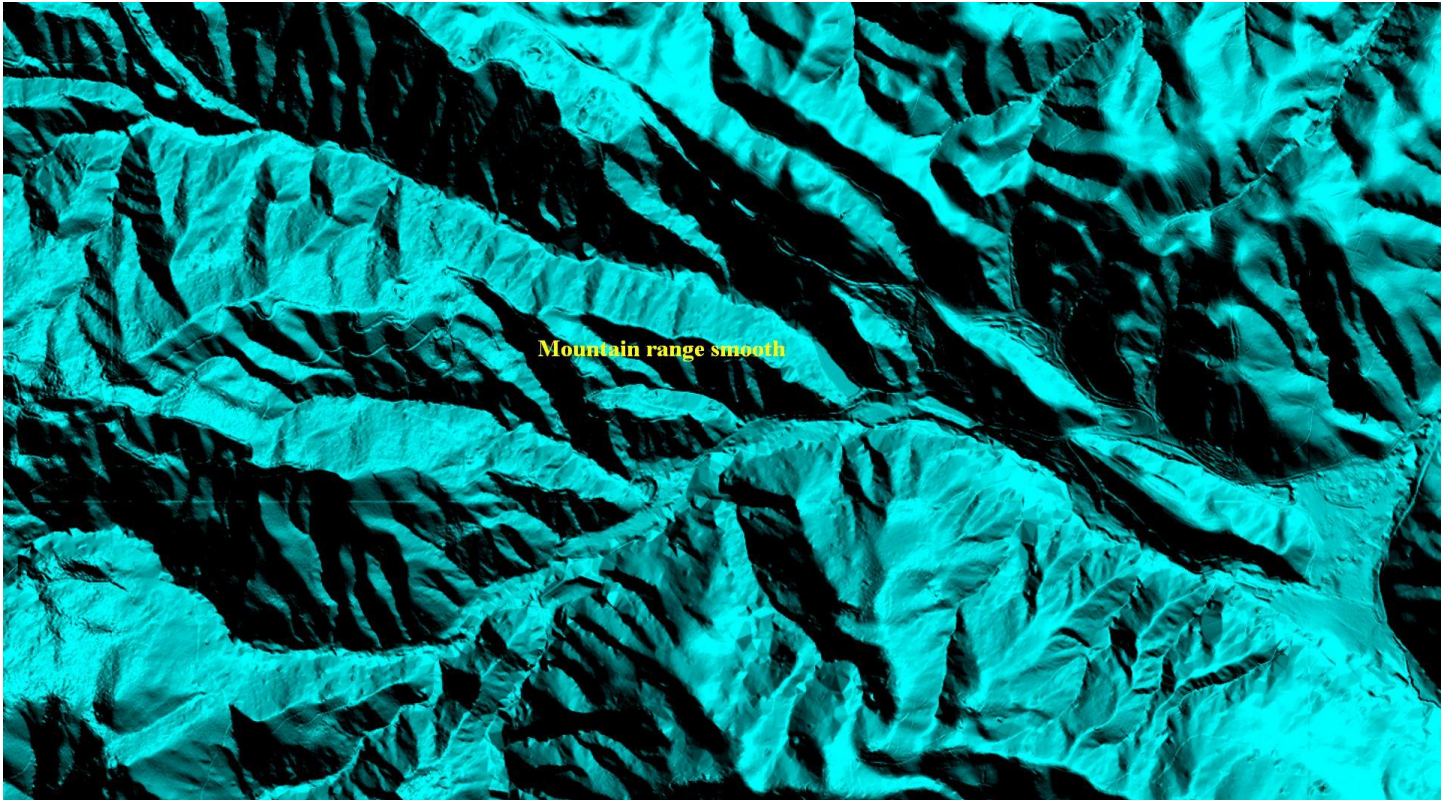
Mountain range (quilting) throughout zone 3 does not match zone 4 example

**LIDAR DATA DIDN'T PENETRAIT THE GROUND BECAUSE DENSE HIGH TREES.
ZONE-3 HAS MORE DENSE TREES THAN ZONE-4**



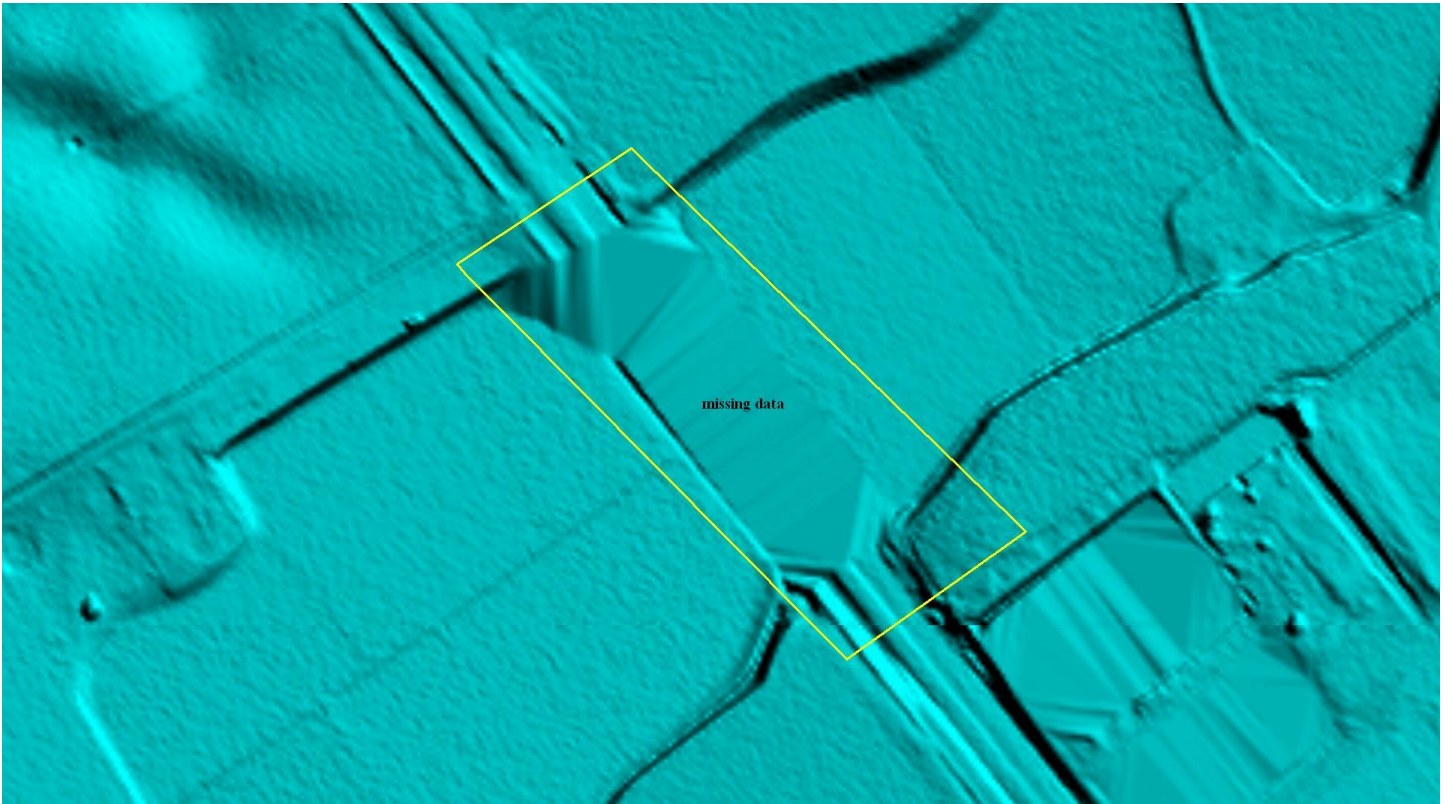


Mountain range zone 4 (smooth) this is good



Missing data example

FIXED THE MISSING DATA



Area leveled but not water

FIXED WATER ELEVATION LEVELED.

