

**Project Report
FEMA VI – Chicot and Desha
LiDAR Survey**



**PREPARED FOR:
UNITED STATES GEOLOGICAL SURVEY
& FEDERAL EMERGENCY MANAGEMENT AGENCY**



**PREPARED BY:
NORTHROP GRUMMAN CORPORATION**

2011 FEMA VI – CHICOT AND DESHA LIDAR

CONTRACT # G10PC00150

NGC INTERNAL #G12PD00031

DATE: 12 JULY 2012

Project Summary

This report documents the performance of GPS ground control surveys, airborne acquisition, and subsequent calibration and production processing of Light Detection and Ranging (LiDAR) data for the FEMA VI – Chicot and Desha LiDAR project. The Light Detection and Ranging (LiDAR) dataset is a survey of Chicot County, Desha County, and parts of Lincoln, Drew, and Ashley Counties, totaling approximately 3,574 square miles. The Chicot and Desha LiDAR project, ordered by FEMA, provides precise elevations acquired with the Optech ALTM213 airborne LiDAR sensor. The LiDAR point cloud is acquired at a nominal point spacing of 2.0 meters. The full study area is approximately 3,574 square miles, with derivative products consisting of high accuracy multiple return LiDAR data, both raw and separated into several classes, along with hydro flattening breaklines, bare earth DEM tiles, control points, and FGDC compliant XML metadata.

The classified point cloud and bare earth DEM data are tiled into 1500 meter by 1500 meter tiles, stored in LAS format version 1.2 (point format 1), and LiDAR returns coded into 6 separate ASPRS classes. The LiDAR data and derivative products produced are in compliance with the *U.S. Geological Survey National Geospatial Program Guidelines and Base Specifications, Version 13-ILMF 2010*. The LiDAR data was acquired by Northrop Grumman, Advanced GEOINT Solutions Operating Unit (AGSOU), which was flown over seventeen missions between December 30, 2011 and January 28, 2012. The Northrop Grumman AGSOU implements a variety of quality assurance and quality control procedures throughout the processing phases in order to provide a product that meets or exceeds the requirements specified in the USGS contract G10PC00150.

This LiDAR data set meets vertical accuracy requirements and is validated to be an accurate representation of the ground at the time of survey.

Table of Contents

Project Summary	2
Table of Contents	3
1 Collection Report	5
1.1 Mission Planning and Acquisition	5
1.2 Flight Parameters	6
1.3 Dates Flown	6
1.4 GPS Collection Parameters	6
1.5 Projection / Datum	6
1.6 Base Stations Used	7
1.7 Flight Logs	7
2 Processing Report	8
2.1 Airborne Survey Processing	8
2.2 Swath LAS File Naming Scheme	8
2.3 Flight Line Calibration	9
2.4 Point Classification	10
2.5 Methodology for Breakline Collection and Hydro-flattening	11
2.6 Product generation - Raw point cloud data, LAS format	12
2.7 Product generation - Classified point cloud tiles, LAS format	12
2.8 Product generation - Bare earth DEM tiles	13
2.9 Product generation - Breaklines, ESRI Shapefile format	13
2.10 Product generation - Digital spatial representation of precise extents of Raw Point Cloud data, ESRI Shapefile format	13
3 QA/QC Report	14
3.1 Post Data Collection QC	14
3.2 Data Calibration QC	14
3.3 Horizontal Accuracy QC	14

3.4	Classified Point Cloud Tiles QC	15
3.5	Bare Earth DEM QC	18
3.6	Breakline QC	19
3.7	Swath Extent QC	19
3.8	Metadata QC	19
4	Conclusion	19

COLLECTION REPORT

Mission Planning and Acquisition

Flight lines are planned and structured such that there would be sufficient LiDAR point density, overlap, and accuracy. The flight lines were flown at approximately 7,500 feet Above Ground Level (AGL). The LiDAR for the Chicot and Desha LiDAR survey is captured at a Nominal Pulse Spacing (NPS) of 2.0 meters (6.56 feet), and with an overlap of approximately 30% between adjacent flight lines. The Optech ALTM213 airborne LiDAR sensor is configured to collect multiple echoes per pulse, with a minimum of first return, last return, and at least one additional intermediate return. Figure 1 shows the planned flight lines and outlines the project area of interest.

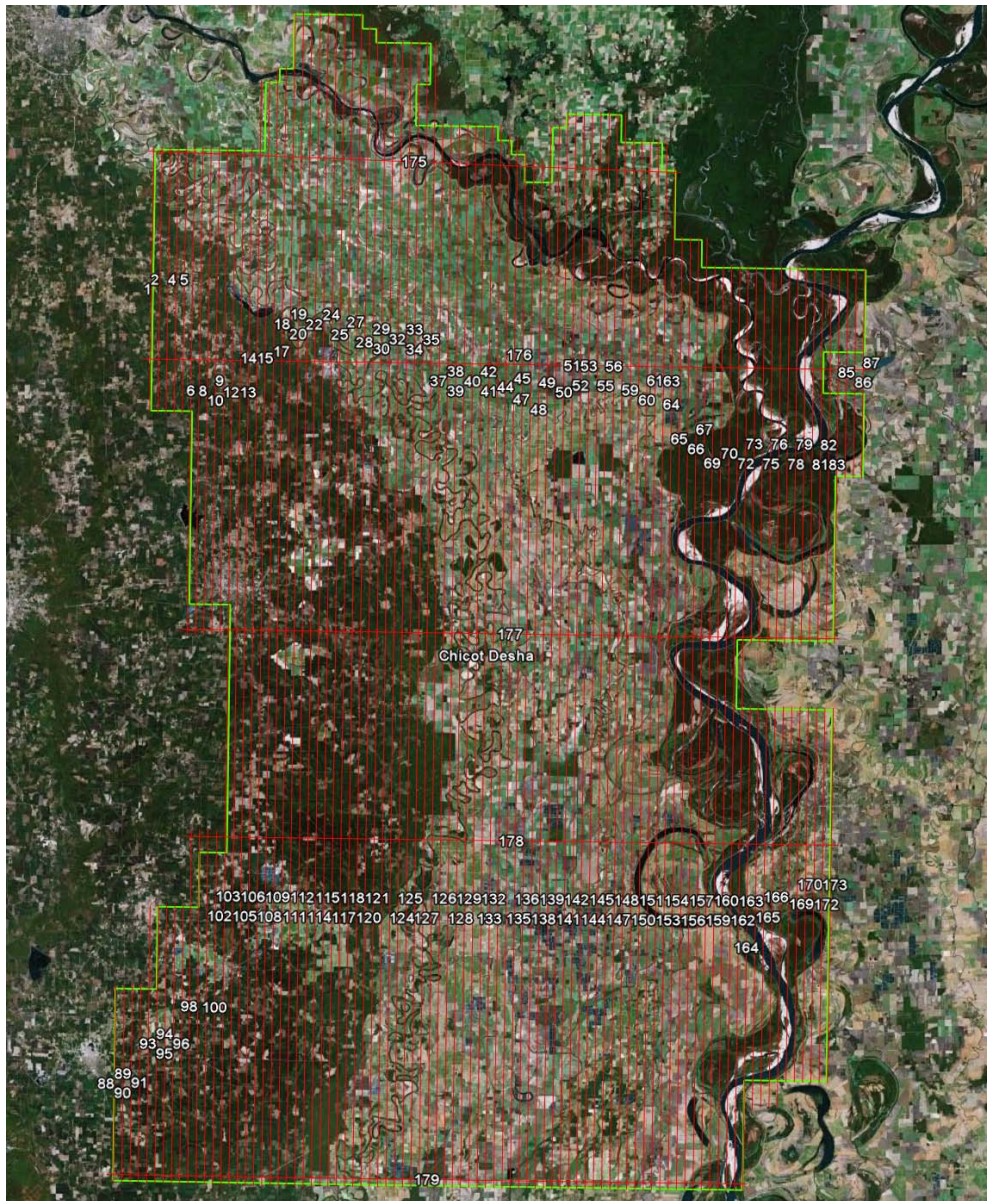


Figure 1

Flight Parameters

Detailed project planning is performed for this project. This planning is based on project specific requirements and the characteristics of the project site. The basis of this planning includes the required accuracies, type of development, amount and type of vegetation within the project area, the required data posting, and potential altitude restrictions for flights in the general area. A brief summary of the aerial acquisition parameters for this project are shown in the table below:

Parameter	Value
Flying Height (AGL)	7500 feet
Nominal ground speed	150 knots
Field of View	17°
Laser Rate	50 KHz
Scan Rate	26 Hz
Maximum Cross Track Posting	1.45 meters (4.76 feet)
Maximum Along Track Posting	1.48 meters (4.86 feet)
Nominal Side lap	30%

These collection parameters resulted in a nominal swath width of 1396 meters (4580 feet) and an average point distribution of 2 points per square meter.

Dates Flown

The FEMA VI – Chicot and Desha LiDAR project consists of seventeen missions, flown between December 30, 2011 and January 28, 2012.

GPS Collection Parameters

Collection parameters for this project included the following:

Parameter	Value
Maximum PDOP	3.0
Minimum number of SVs	13
Ground collection epoch	2 Hz (0.5 sec)

Projection / Datum

The spatial reference systems used are UTM Zone 15N, NAD83, meters with elevations in NAVD88, meters for the full study area. Geoid09 is used in the translation of elevations from ellipsoid to orthometric heights.

Base Stations Used

The Airborne Global Positioning System (ABGPS) used is the Novatel GPS-702 data collection unit, logging at 2 Hertz, paired with a Novatel DL-4+L1/L2 antenna, which is a fixed height antenna.

Flight Logs

The LiDAR flight team keeps daily logs throughout the survey acquisition, as seen in Figure 2. These flight logs contain various information about that days flying conditions, sensor setup, date, project, lines flown, start and stop times for each line, and any other additional comments and attributes that may be relevant for that particular mission.

NORTHROP GRUMMAN		LIDAR Daily Log										GPS Information		Meteorological Conditions				
Field Crew Crew Chief		Project #	Project Description	GPS (m)	Lower Alt	Base 1	Base 2	Base 3	Start Time	Stop Time	Altitude	Elevation	Temp	Humidity	Pressure			
Northrop Grumman Corporation Advanced GEOM Solutions 1133 Echo Ct., Huntsville, AL 35894		810000000	V008 Cheng, China	4	Not Updated in System	Auto	Auto	Auto	21:54:45	0:02:00	7657	452	8.0°	278.15%	#VALLET			
Flight Date (UTC)		Pilot	Operator	Sensor	Altitude	NTRM ID	SENSOR NAVIGATION FILE NAME	Start Time	Stop Time	Multi Pulse (Hz)	Altitude (m)	Altitude (feet)	Speed	Horizontal Rate (ft/s)	VMG (ft)	FOCUS	Operator	Conditions/Comments
1/24/2012		Mortson	Cavender	ALTM215	NTRM10	CHICOT_C000A-V2_PLN	CHICOT_C000A-V2_PLN											
Altitude	Line	Dir	Start	Stop	Total Time	FOV	Scan Rate	Pulse Rate (Hz)	Roll Comp	Multi Pulse (Hz)	Altitude (m)	Altitude (feet)	Speed	Horizontal Rate (ft/s)	VMG (ft)	FOCUS	Operator	Conditions/Comments
37504 (TLE)	272		22:17:17	22:22:00	0:04:43	17	20.0	50	ON	N	2,832.83	7657	121	151 mph	0.73	1.38	Cavender	
09104	484		22:18:54	22:32:22	0:14:28	17	20.0	50	ON	N	2,832.84	7654	142	183 mph	33.12	1.78	Cavender	
05104	1		22:17:13	23:11:46	0:14:33	17	20.0	50	ON	N	2,832.62	7651	146	183 mph	34.07	1.78	Cavender	
05105	181		23:18:00	23:30:18	0:14:30	17	20.0	50	ON	N	2,832.60	7651	146	183 mph	33.47	1.77	Cavender	
09404	1		23:34:49	23:48:50	0:14:31	17	20.0	50	ON	N	2,832.62	7651	146	183 mph	33.67	1.77	Cavender	
37504 (TLE)	92		23:54:11	23:55:37	0:01:26	17	20.0	50	ON	N	2,839.95	7877	121	139 mph	2.02	1.45	Cavender	

LIDAR FLIGHT SUMMARY				DATA COLLECTION				Comments		Cloud Cover	
Aircraft MU Time	2:27:12	HOBBS Start	2357.2	Total Lines	4	Percent % Complete	77.1%	Lift cut short due to cloud development		Clear	
Sensor Collection Time	1:04:20	HOBBS Stop	2357.2	# Flight Lines	0	Total Flight Lines	179			Fair	X
Line Miles Flown	143.3	HOBBS Total	0.0	Flight Percent	0.0%	Lines Complete	136			Partly Cloudy	X
Average Flight Lines per Hour	470.0	HOBBS Hours	0.0	Sensor Rx Flight Miles	0.0	Mission Lines	4			Cloudy	

Figure 2

PROCESSING REPORT

Airborne Survey Processing

Beginning the LiDAR data processing, the Airborne GPS is extracted and computed to give the best possible positional accuracies. The IMU data is then analyzed and the lever arms corrected to achieve consistent airborne data. Upon the creation of the SBET file, the LAS files are computed using Optech's proprietary post-processing software.

The Quality Assurance (QA) analyst does a thorough review for any quality issues with the data. This could include data voids, high and low points, and data gaps. The data voids or high points could be the result of any high elevation point returns, including clouds, steam from industrial plants, flocks of birds, or any other anomaly.

The LiDAR data is reviewed at the flight line level in order to verify sufficient flight line overlap as required to ensure there are no data gaps between usable portions of the swath. Each line is also assessed to fully address the data's overall accuracy and quality. Within this Quality Assurance/Quality Control (QA/QC) process, four fundamental questions are addressed:

Does the LiDAR system perform to specifications?

Does the data have any discrepancies or anomalies?

If there are any discrepancies or anomalies, are they addressed accordingly?

Is the data complete?

Swath LAS File Naming Scheme

Two distinct file name encoding schemes were developed for the swath LAS files which are compatible with the allowable range of values for the LAS File Source ID (header record) and Point Source ID (point records) fields. These fields are stored within the LAS files as a 2-byte unsigned integer (unsigned short) value, which can range from 0 to 65535. The 5-digits supported by this range are subdivided into two or three groups based on the type of swath the file would contain.

In the case of bore sight (for calibration) and tie line swaths, two groups of digits are used. The grouping consists of first, a three digit flight line number (left padded with zeros if necessary) then, a two digit version number. The flight line number reflects the unique number assigned to the flight path as designated in the project flight plan. Initial acquisition of a planned calibration or tie line is designated as version one. Upon subsequent re-flight or re-acquisition, should such be necessary, the version number is incremented relative to the most recent prior acquisition. For example, a file name of "02901.las" would indicate that the file contains the swath from planned flight line number 29, and is the 1st version (i.e. it is the first time the flight line was flown).

In the case of project data swaths, three groups of digits are used. These groups consist of a three digit flight line number (as above), a single digit revision number, and a one digit part number. The initial acquisition of a project data line is designated as revision zero. (It should be noted that this is in contrast to the use of a *version* number as for the bore sight and tie lines above. The primary reason for this difference is to allow the full numeric range, from 0 to 9, to be used for this single digit value.) For the current project, the part number will have a value of either 1 or 2 due to the requirement to split

swath files that are larger than two gigabytes in size. As an example, a file named "04711.las" indicates flight line number 47, revision number 1 (i.e. the line was flown once before), and part number 1.

Flight line Calibration

Next, the LiDAR data set is calibrated using suitable test sites identified throughout the project area within the raw point cloud. The sensor misalignment angles (heading, roll, and pitch) and mirror scale are then adjusted based on measurements taken between adjacent flight swaths within the point cloud at the test site locations. The Figures 3A and 3B below demonstrate the pre- and post-calibration data.

Figure 3A, shows a predominantly horizontal offset of about 15.5 meters in the overlapping region between two swaths.

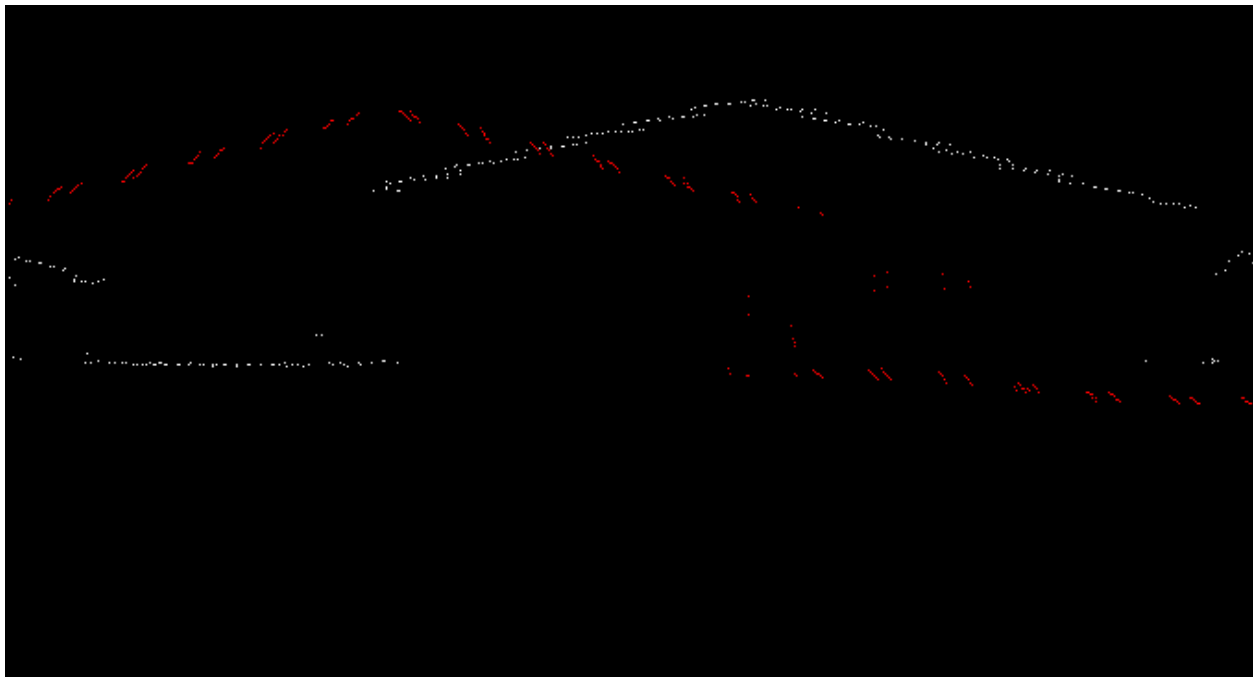


Figure 3A

Below is Figure 3B, showing the offset as corrected after calibration values are applied.

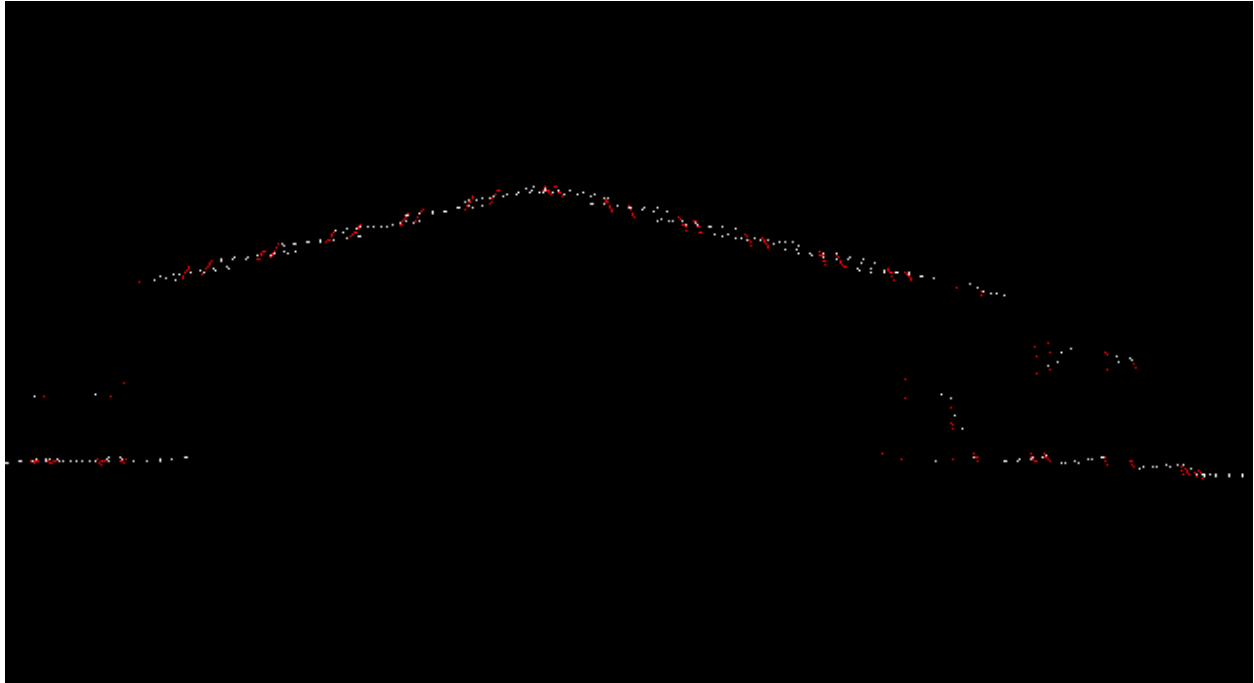


Figure 3B

Once the misalignment angle adjustments are applied to the point cloud, it is compared to the ellipsoidal heights of the surveyed ground control points. Based on the Z-bias given, the data is adjusted to an average delta-Z value to meet or exceed the specified requirements. A geoid model is then created and applied to the point cloud. These final datasets are now quality checked against the orthometric heights of the surveyed ground control points to ensure that they are fully compliant with Statement of Work accuracy specs.

The raw point cloud data is then tiled into 1500 meter by 1500 meter tiles which are stored in LAS format version 1.2, with point format 1. The populated tiles are then quality checked to ensure that tiles which lie completely within the project area are complete to tile edges and that tiles which lie partially outside the project boundary are complete to the project boundary and include enough overlap beyond the project boundary to ensure that no parts of the project are omitted.

Point Classification

After calibration, the data is cut into 1500 meter by 1500 meter tiles, per the Statement of Work. The tiles are contiguous, do not overlap, and are suitable for seamless topographic data mosaics that include no "no data" areas. The names of the tiles include numeric column and row. Ground classification algorithms are then applied. The data is automatically classified into the following classes:

- Class 1 - Processed, but unclassified
- Class 2 - Bare Earth Ground
- Class 11 - Withheld

- This class includes: outliers, blunders, noise points, geometrically unreliable points near the extreme edge of the swath, and other points deemed unusable that are identified during pre-processing or through the ground classification algorithms

The following classes are also used during the task of point classification Quality Control (QC), manual edits and breakline creation:

- Class 7 - Noise (low or high, manually identified)
- Class 9 - Water
- Class 10 - Ignored Ground (Breakline Proximity)

Class 7, Noise, is used for points subsequently identified during manual edits and QC. False, extreme high, and extreme low returns are put in this class if found erroneously classified as Ground. Class 10, Ignored Ground, is used for points previously classified as Bare-Earth/Ground, but whose proximity to a subsequently added breakline required that it be excluded during DEM generation. This proximity is 1 meter (3.28 feet).

Each tile is reviewed by an experienced LiDAR analyst to verify the results of the automated ground filters. Points are manually reclassified when necessary. Hydro flattening breaklines are collected, per the project specification, which results in the point classifications for Classes 9 (Water) and 10 (Ignored Ground).

Methodology for Breakline Collection and Hydro-flattening

Breaklines are collected manually, based on the LiDAR surface model in TerraModeler version 011. The classification of points as either water or ground is determined based on a combination of factors in the data: point density, voids in data returns, and flatness of the surface. Auxiliary information, such as publically available imagery, as well as ESRI's Hydro layer is used as an additional aid in decision making.

When an area has sufficient voids in returns, i.e. the point density is sparse due to absorption, and the area when viewed in cross-section appears to be flat with no apparent vegetation growth, then it is determined to be water. There are cases where a significantly sized body of water has returns on the surface of the water, but based on it being completely flat in cross-section and existing point return voids in close proximity within the bounds of the feature, the area is classified as water.

Along smaller streams and lakes, if there are sufficient point returns that are similar in density to the surrounding ground data, those points are determined to be likely ground returns as well. It is not possible to verify or determine with 100% certainty whether dense point returns within water bodies are actual ground or floating plant debris/algae mats on the water surface. If there are sufficiently dense returns, then it is classified as ground.

Inland ponds and lakes are given a single, constant elevation via hydro flattening breaklines. This elevation value is determined by reviewing multiple cross sectional views of the point data at various locations around the feature in order to identify the elevation of point returns on the surface of the water.

Sloped inland stream and river breaklines have a gradient longitudinally and are flat and level, bank-to-bank, perpendicular to the apparent flow centerline. This is accomplished by setting benchmark heights

along the breakline feature at each endpoint and at intervals as needed. These heights are determined by viewing cross sections at each benchmark, identifying the elevation. The feature is then sloped using linear interpolation to set the vertex heights between the benchmarks. The sloped feature is then checked at multiple places to verify the fit to the point data. At any given point along the sloped breakline, the water surface should be at or just below the adjacent ground data.

After the manual point classification edits and breakline collection process, the tiles go through a final round of QC by our most experienced analysts. Point classifications, breakline collection, and breakline heights are verified. After all data passes the final round of QC, the Bare Earth LiDAR products are generated from the classified LAS tiles.

Product Generation - Raw Point Cloud Data, LAS format

Following calibration, all raw swaths are evaluated to ensure that the data meets all deliverable requirements. The point cloud is verified to the extent of the AOI and that all points meet LAS 1.2 requirements. GPS times are set to 'Adjusted GPS Time' to allow each return to have a unique timestamp.

Long swaths resulting in a LAS file larger than 2GB are split into segments no greater than 2GB each, without splitting point "families" (i.e. groups of returns belonging to a single source laser pulse). Each segment is subsequently regarded as a unique swath and is assigned a unique File Source ID and each point given a Point Source ID equal to its File Source ID. Georeference information is added and verified. Intensity values are in native radiometric resolution. All swaths, including cross-ties and calibration sites, are included in this deliverable.

Following calibration and correct naming convention application, the raw point cloud is organized and structured per swath as the first deliverable.

Product Generation - Classified Point Cloud Tiles, LAS format

Following calibration, the data is cut into 1500 meter by 1500 meter tiles, per the Statement of Work, and ground classification algorithms are applied. The data is reviewed by experienced LiDAR analysts, on a tile by tile basis, and ground classifications are manually corrected, as needed. The classified tiles go through one round of quality control and point classification edits, using experienced LiDAR analysts. A second round of QC is performed by our most experienced analysts, which sometimes involves minor edits to the point classifications.

After the point data classifications are verified to meet the standards of the project specification and the *U.S. Geological Survey National Geospatial Program LiDAR Guidelines and Base Specification, Version 13 – ILMF 2010*, the LAS tiles are clipped to the Area of Interest polygon.

Breakline collection dictates the classification of "Ignored Ground", class 10. Bare earth LiDAR points in close proximity to breaklines are classified to "Ignored Ground", in order to exclude the data from the DEM creation process. The distance threshold used for this reclassification is 1 meter (3.28 feet).

The "Ground" class for all classified point cloud tiles is loaded into TerraScan version 011 to verify completeness of the dataset.

Product Generation - Bare Earth DEM Tiles

After a satisfactory review of the classified point cloud tiles, these tiles are used to create the Bare Earth DEM raster tiles. Using TerraModeler version 011, the classified point cloud tiles and hydro flattened breaklines are combined to create triangulated surface models and exported as lattice files, in ArcInfo ASCII raster format, with a cell size of 2.0 meters. The Digital Elevation Model (DEM) naming convention matches the classified LAS tiling scheme. The ASCII raster files are verified to contain no NODATA pixels, within the Area of Interest.

The ASCII raster files are converted to ESRI Float Grid format and clipped to the project coverage area. The bare earth Grid tiles are reviewed to ensure that there is a seamless data set, with no edge artifacts or mismatches between tiles. Any areas outside the Area of Interest, but within the tiling scheme, are coded with a unique NODATA value. The projection for this data set is UTM Zone 15N, NAD83, meters.

Product Generation - Breaklines, ESRI Shapefile format

All breaklines are collected in MicroStation v8 DGN format then combined into a single master DGN file. Breakline collection adheres to the project specification for feature size and hydro flattening requirements. Breaklines are collected alongside the Quality Control and manual point classification of the LiDAR point data while viewing a surface model of a single tile of data.

Inland ponds and lakes are given a single, constant elevation via hydro flattening breaklines. Inland stream and river breaklines are sloped using a proprietary macro, which interpolates the vertex heights between the established benchmark heights.

The master DGN is then converted to ESRI Shapefile format, as 3D polylines. All breaklines used to modify the surface for the purpose of DEM creation are considered a data deliverable. The projection for this data set is UTM Zone 15N, NAD83, meters.

Product Generation - Digital Spatial Representation of Precise Extents of Raw Point Cloud data, ESRI Shapefile format

Swath extents for each flight line are computed and combined to form one Shapefile which contains individual swath polygons per acquired line. Since the mission lines are very large, a thinning method is used to decrease overall file size. The thinning method involves placing a uniform grid with a specified cell size and keeping only one point per grid cell.

The thinned LAS file is triangulated into a Triangulated Irregular Network (TIN) and the boundary extracted using a concave approach. Triangles with edges that exceed 50 meters (164 feet) on the outer regions of the TIN are excluded. The domain of the resulting TIN is calculated and polygons are produced which represent each swath's extents. This method calculates the actual extents of the LiDAR source data, exclusive of TIN artifacts or raster NODATA areas.

The resulting Shapefile presents an accurate representation of each swath without being overly complex. The swath polygons are then dissolved, to form a single polygon for each swath, and combined with the other mission lines in the Shapefile format.

QA/QC REPORT

Post Data Collection QC

After extraction of the o-files, no-data regions are analyzed and validated. Each swath undergoes a visual QC for void regions within the swath itself, and in the overlapping regions of the adjacent swaths as well. All data voids in question are examined and verified as being the result of water bodies or areas of low reflectivity.

Data Calibration QC

The data posting is a function of flight altitude, airspeed, scan angle, scan rate, laser pulse rates, and terrain relief. The above functions are taken into consideration at the time of flight planning. Data acquisition procedures play a role in the success of this method. Many parameters are considered in order to achieve the maximum possible GPS positioning accuracy, such as the separation between the airborne and base station GPS receivers, satellite geometry as reflected by the Position Dilution of Precision (PDOP), signal multipath, and many other factors.

The post-flight data processing software maximizes detection probability while minimizing false alarms. It corrects for several unavoidable, but predictable, biases from the environment as well as removing effects inherent to the hardware configuration. Monitoring the data during collection is only part of the process done to assure proper operation of equipment and ultimately, data quality. However, all subsystems may indicate correct operating parameters (precision), but that does not mean that together they are providing correct solutions (accuracy). In order to validate the collection process, calibration checks are performed. These procedures allow the operator to know if the subsystems are set up properly and if there are any inherent biases in the instrumentation.

Prior to the calibration process, the GPS base stations, which are correlated to NGS CORS network stations, are processed in conjunction with the airborne GPS raw observables to determine the aircraft's positions. The processed GPS positions are combined with the inertial data, measured by the Inertial Measurement Unit (IMU), using the Applanix POSPac™ software in a closed loop fashion (forward and backward solution with Kalman filter option) to compute the solution parameters, namely position, velocity, and attitude. The resulting SBET file and the LiDAR data are used in the post-processing software as input to compute the calibration parameters.

Horizontal Accuracy QC

Figure 4 depicts the horizontal accuracy with lines digitized by a Northrop Grumman analyst between the LiDAR and horizontal check points acquired by the field crew. These sites are randomly spaced throughout the project area.

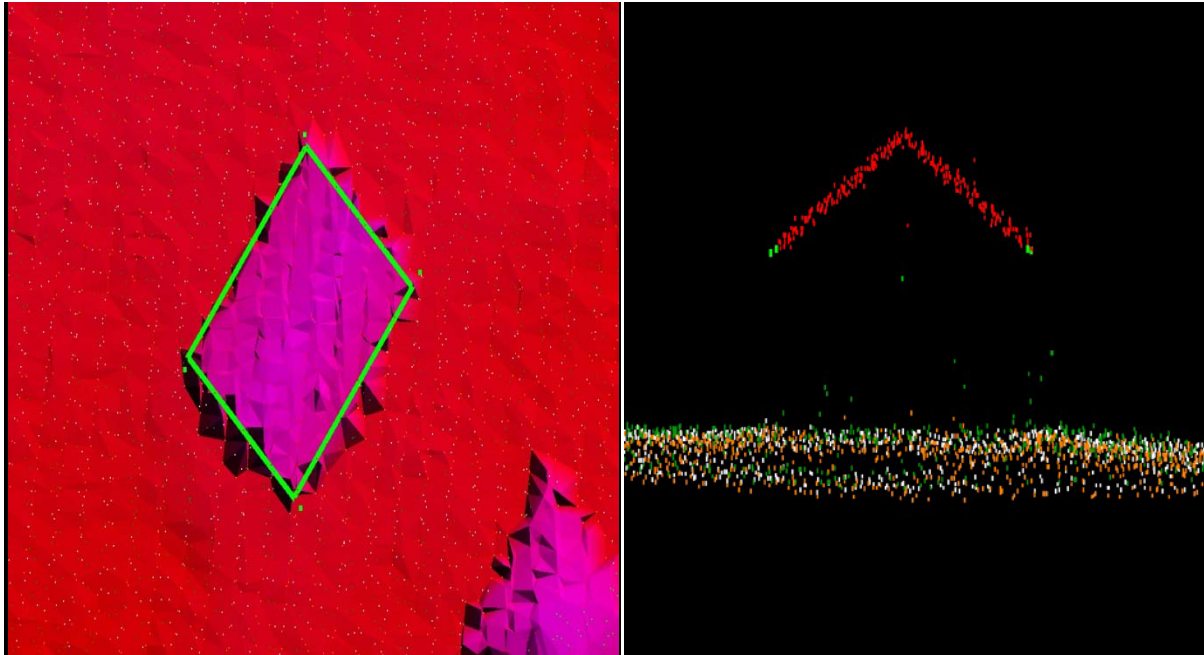


Figure 4

There is not a systematic method of testing when testing horizontal accuracy in LiDAR. The horizontal accuracy is checked by collecting building corners during the survey. Lines are then digitized representing the building outline and the differences are measured from each individual survey point to the corner of the building outline. Stats are calculated to ensure horizontal tolerances are met. These measurements resulted in an RMSEr of 0.26 meters and a horizontal accuracy of 0.45 meter horizontal accuracy at the 95 % confidence interval. Method used was the NSSDA standard for horizontal accuracy assessment.

RMSEr * 1.73 = Horizontal Accuracy at the 95% confidence interval.

Classified Point Cloud Tiles QC

The classified point cloud tiles are delivered in fully compliant LAS v1.2 format, with point format 1 and geo-reference information included in the LAS header. GPS times are recorded as Adjusted GPS Time and Intensity values are in native radiometric resolution.

The calibrated data is cut into tiles and then processed using proprietary ground filter macros. The data is reviewed, on a tile by tile basis, and ground classifications are corrected manually, when needed. The point classification scheme is consistent across the entire project and adheres to the project specification.

It is worth noting that the ground returns are not necessarily smooth in a surface model. Due to the excellent ground penetration by the sensor, there is much detail to the terrain and "Ground" point class, as seen in Figure 5.

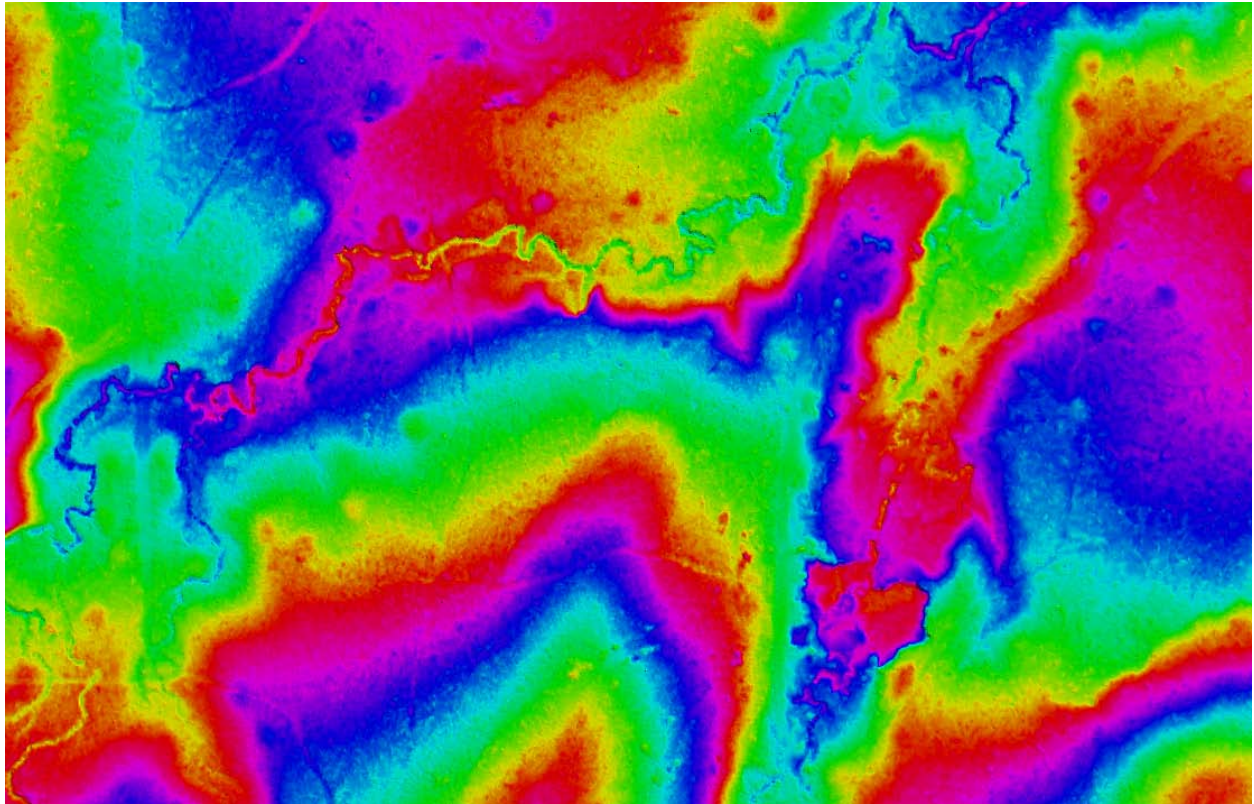


Figure 5

The apparent roughness of the ground point class does appear to accurately represent the ground returns by the sensor. As a result, there are bumps and ridges in the ground class that may initially appear as noise, but are determined to be actual ground returns.

Hydro flattening breaklines are manually collected based on the LiDAR surface model, adhering to the project specification. These breaklines are used to classify ground to "Water" and "Ignored Ground" as needed. The proximity to breaklines threshold for reclassification of ground points to "Ignored Ground" is 1 meter.

Figure 6 shows typical breakline areas, with the classified water points in red, and the ignored ground points in white:

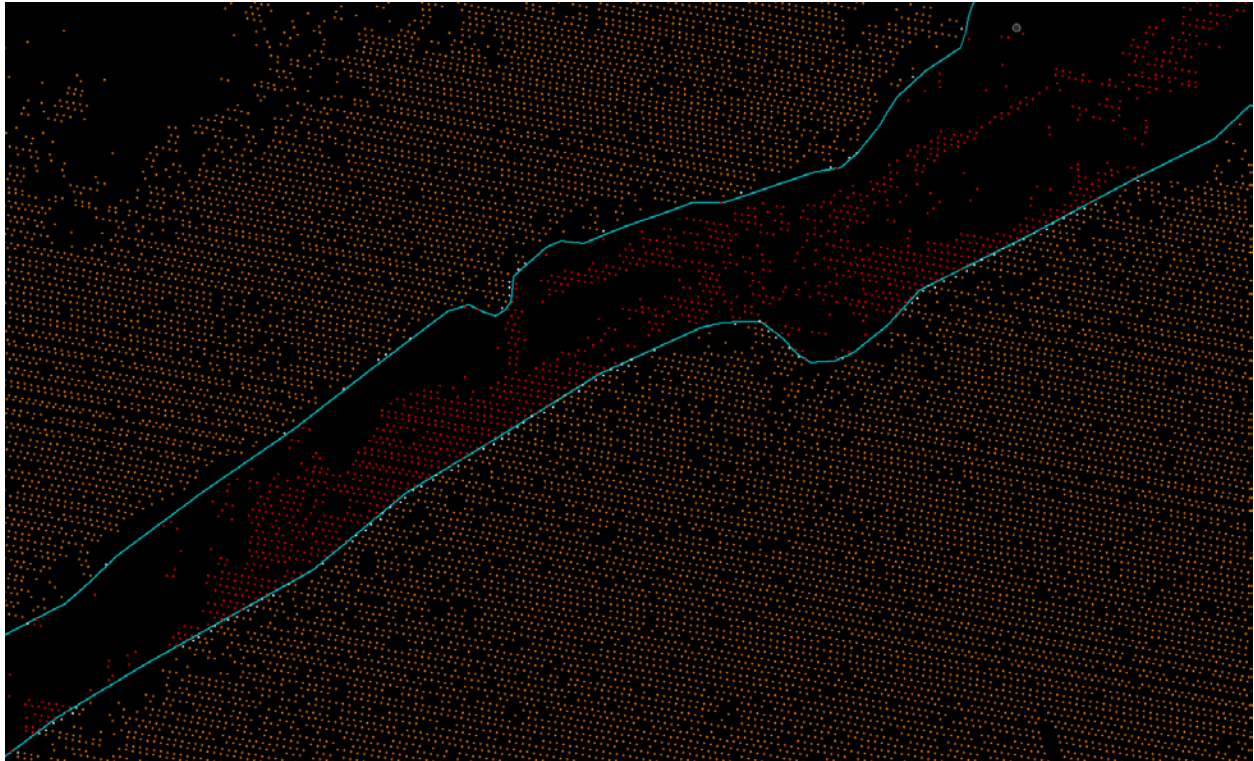


Figure 6

The classified tiles go through one round of Quality Control (QC), point classification edits and breakline collection using experienced LiDAR analysts. A second round of QC is performed by our most experienced analysts, which sometimes involved minor edits to the point classifications and breaklines. If a major problem is found with an analyst's work, issues are identified and submitted back to the analyst for correction. These corrections are then reviewed by the final QC analyst to ensure that the correction is made and that the data meets the project specification.

While the classified point cloud tiles are reviewed by viewing surface models on a tile by tile basis, the point classifications are also checked in a DEM mosaic, a surface analysis hillshade view, for any noticeable anomalies.

As a final check for completeness of data, the ground class for all LAS tiles is loaded into TerraScan version 011 to verify that no data is missing from the delivery, as seen in Figure 7.

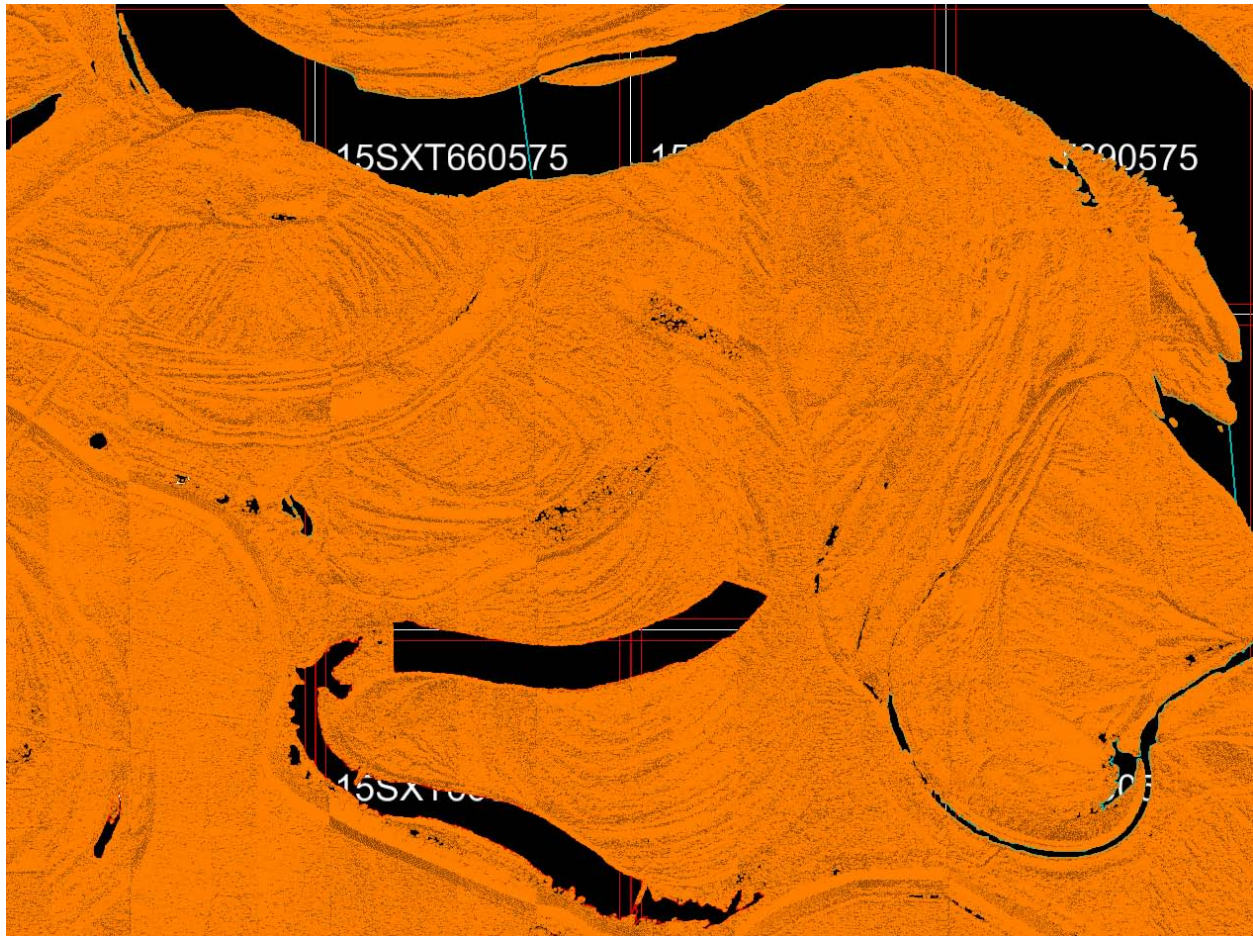


Figure 7

Bare Earth DEM QC

After the classified point cloud tiles passes all QC procedures, the ESRI Float GRID files are created and clipped to the deliverable area. These GRID files are then combined to create a mosaic of the entire project area, and used only for internal review.

All DEM tiles are 32-bit floating point, ESRI GRID format with a 2.0 meter cell size. The extent of the dataset is verified to cover the deliverable project area, with no gaps. The bare earth DEM dataset is verified to be free of no-data pixel issues, data voids, and high/false returns. Depressions (sinks), whether natural or man-made, are not filled in.

All DEM tiles are carefully reviewed, ensuring that there are no edge artifacts or mismatches between tiles. These DEM tiles can be combined into a truly seamless dataset.

Vertical accuracy requirements of the bare earth data are met, adhering to the project specification. Georeference information is included in all of the raster files and files are verified to utilize a consistent naming convention. The data is then verified to load correctly in the native software.

Breakline QC

All breakline elements are manually collected, using MicroStation v8, in DGN format. All breaklines go through the QC process multiple times alongside the classified point cloud tiles. The breaklines are collected, meeting the requirements for surface area and stream or river width, per the project specifications. The breakline features are seamless between tiles. The breakline height, at any given point, is determined to be at, or just below the immediately surrounding terrain, representing the level of the water surface. All breakline areas are flat and level bank-to-bank and are perpendicular to the apparent flow centerline.

Swath Extent QC

The swath extent Shapefile is analyzed for numerical accuracy as well as correct spatial representation. This involves loading the LAS files and visually checking the boundaries that were created. It also requires checks throughout the attribute table to verify the correct file naming is applied to each swath's polygon.

Metadata QC

Metadata templates for each product are created by an experienced analyst. Each section of the metadata is analyzed for accuracy and inclusion of all requirements. Upon completion of the metadata templates, the templates are modified slightly to adhere to each product's requirements specifically referring to processing steps, product format, and methodology. Finally, the USGS metadata parser is used to validate the metadata against the FGDC Content Standard for Digital Geospatial Metadata.

Conclusion

From the precise flight planning around various environmental and project specific requirements to the rigorous QA/QC process at Northrop Grumman, these LiDAR survey products are produced to meet or exceed the required specifications according to the statement of work. Great care is taken to ensure the surveyed data between December 30, 2011 and January 28, 2012 is an accurate representation of the ground during these dates.