

Elevation QC Report

Project: Iowa_CSE_01-15_Lidar_2010

Contractor: Sanborn Map Co. Inc.

Data Delivery Date: 02/10/2009, 09 **Date Data Reviewed:** 02/17/2009 - 03

Reviewer: Eric Jaramillo **Total Square Miles Reviewed:** 4376.3 sq

Elevation Type: LIDAR **Format:** xyz **Grid Spacing:** 1 meter **Tile size:** 1000 x 1000

Projection: UTM **Zone:** 15 **Datum:** NAD83 **Units:** Meters

Licensing: Public Domain **Metadata:** Project Level

Materials Received:

- Bare earth ASCII .xyz files
- Las point cloud .xyz files
- Metadata
- Shape files

Vertical Accuracy Test Performed: Yes **Test Point Source:** Contractor **RMSE:** 0.182 meters

Vertical Accuracy Test Notes:

A vertical check was performed on Iowa CSE 01-15 bare earth data. See the Iowa Statewide Lidar Project Vertical Accuracy Report sent with the final .img data.

QC Review Summary:

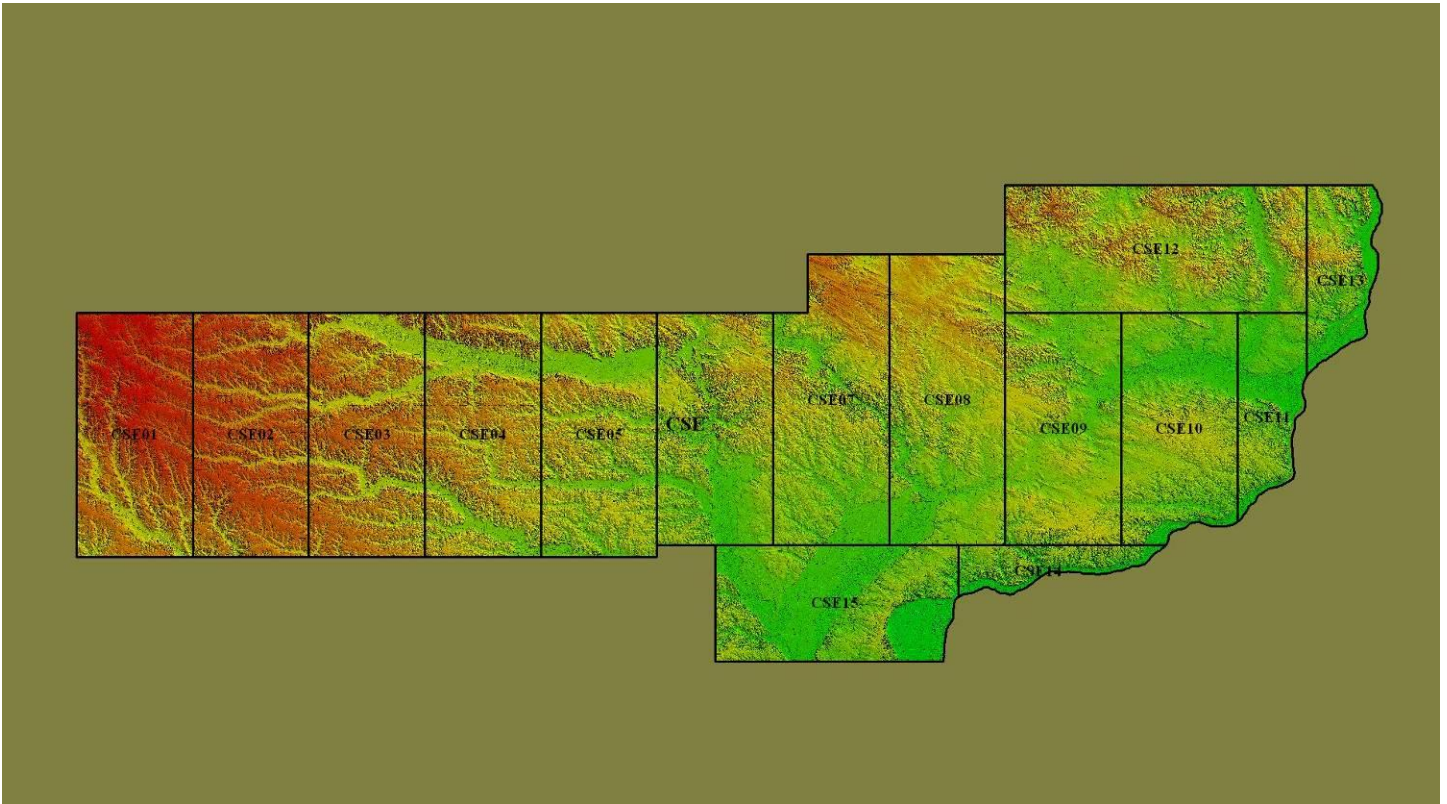
All of Iowa CSE 01-15 one meter Lidar data was reviewed. This data was brought into Global Mapper as .xyz point files. Las point files were created from the .xyz files then gridded to 1 meter DEM data for a QA/QC. Errors found throughout this project and fixed in Global Mapper are (bridges not taken out, areas needed to be leveled, spiking, bldgs not removed. Errors found on this project and fixed by the contractor are missing data. This data was regridded to 1 meter .img files. This data is accepted and will be archived.

See error JPEGs examples and document below.

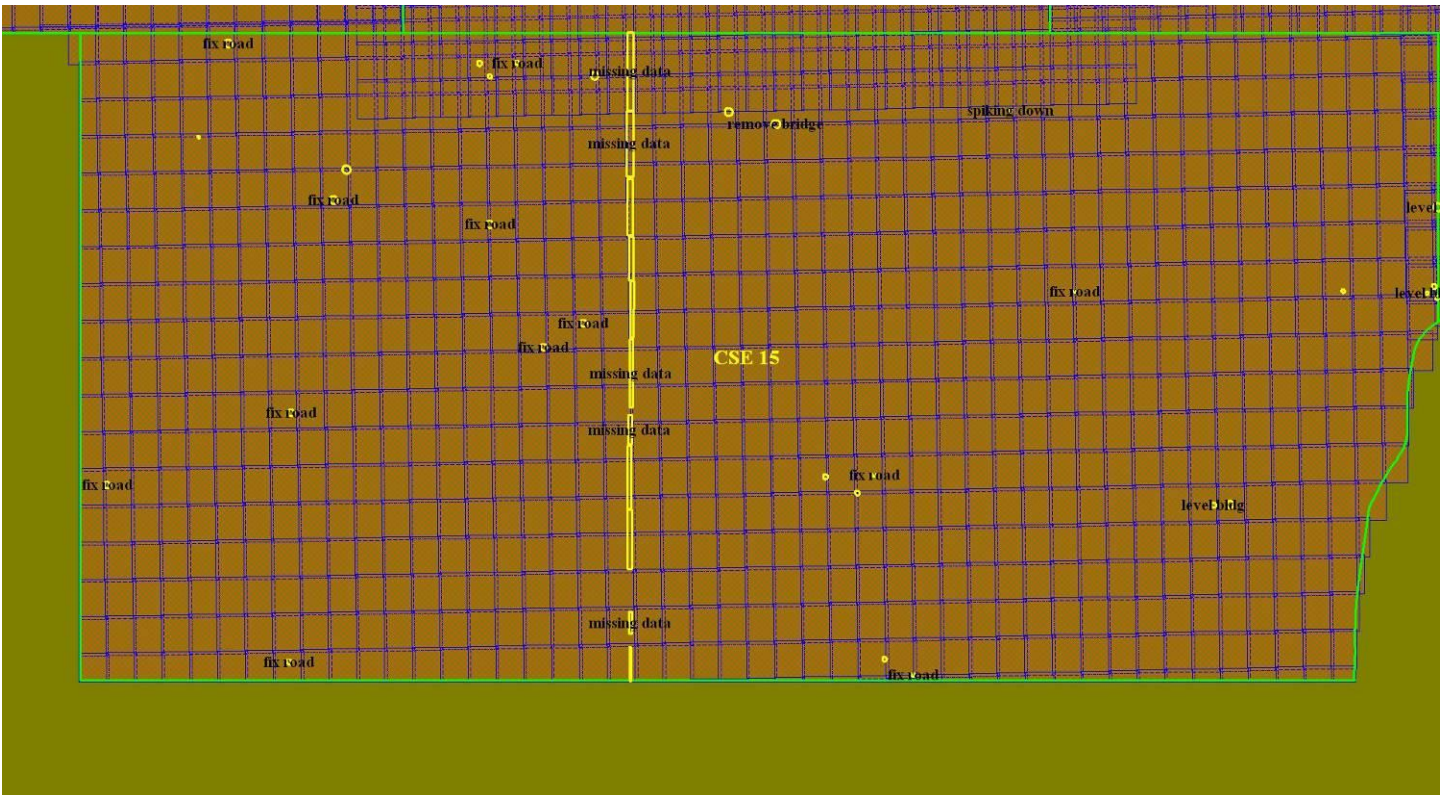
Conclusions:

1. 89% of artifacts removed
2. 90% of vegetation removed
3. 95% of buildings removed

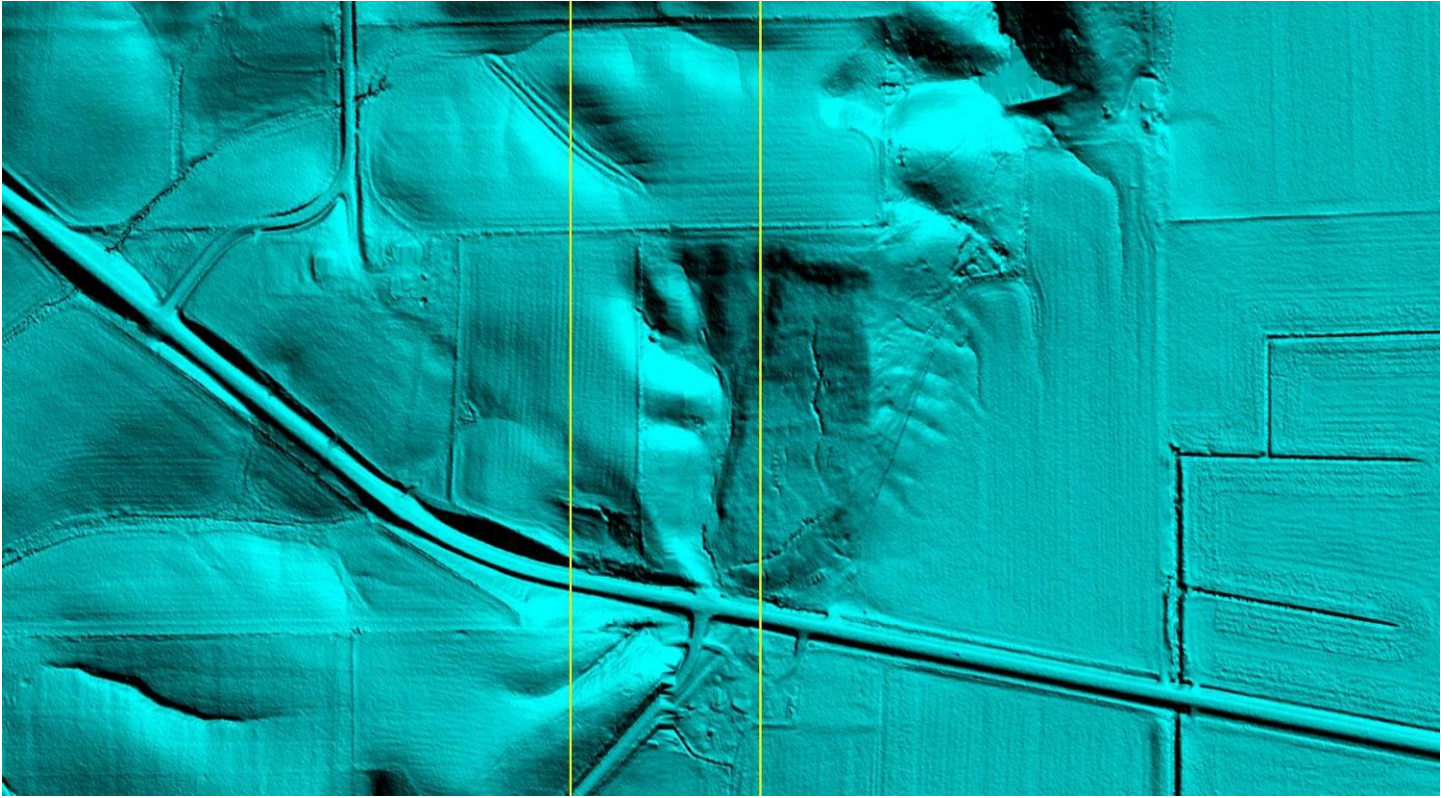
Iowa CSE 01-15



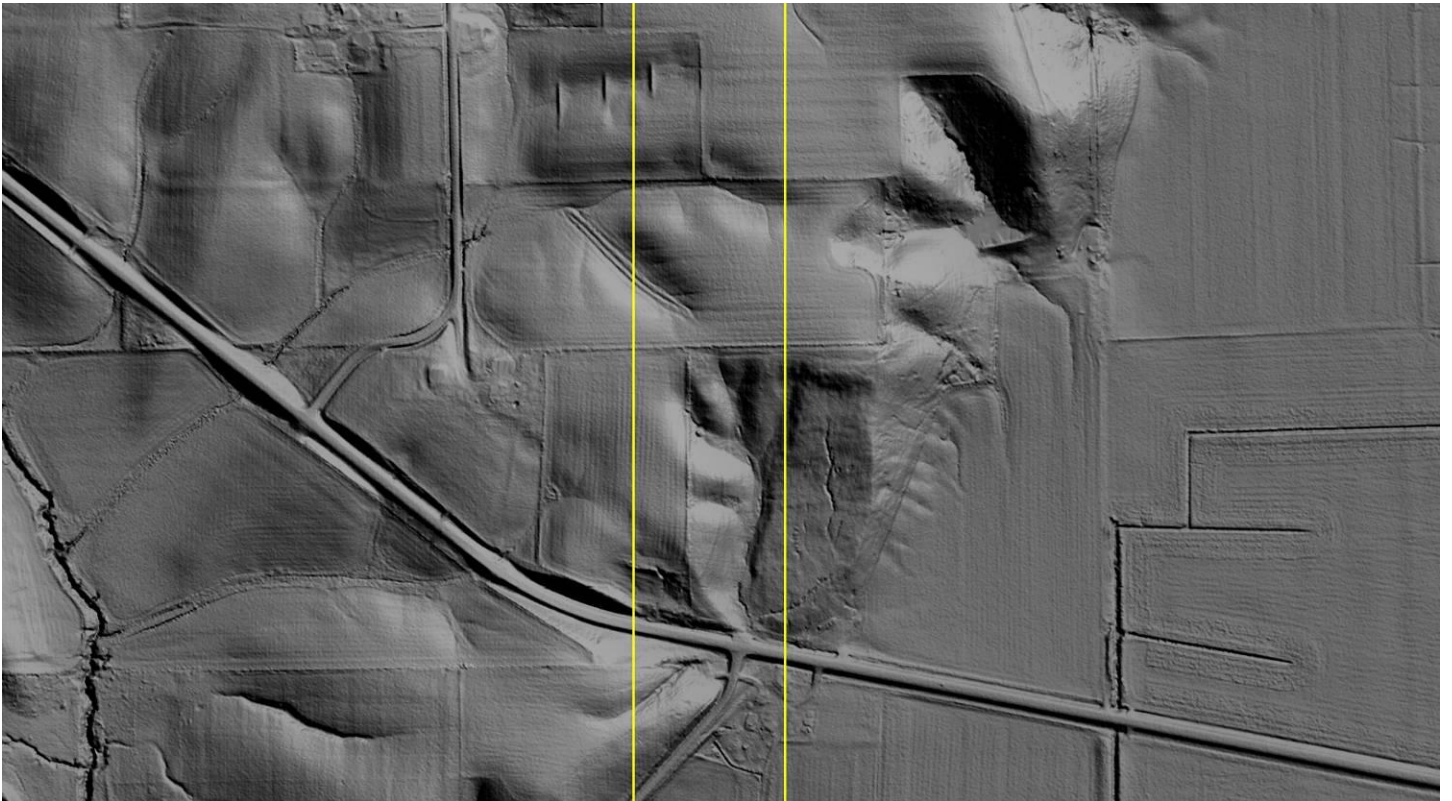
Iowa CSE 15 missing data 1



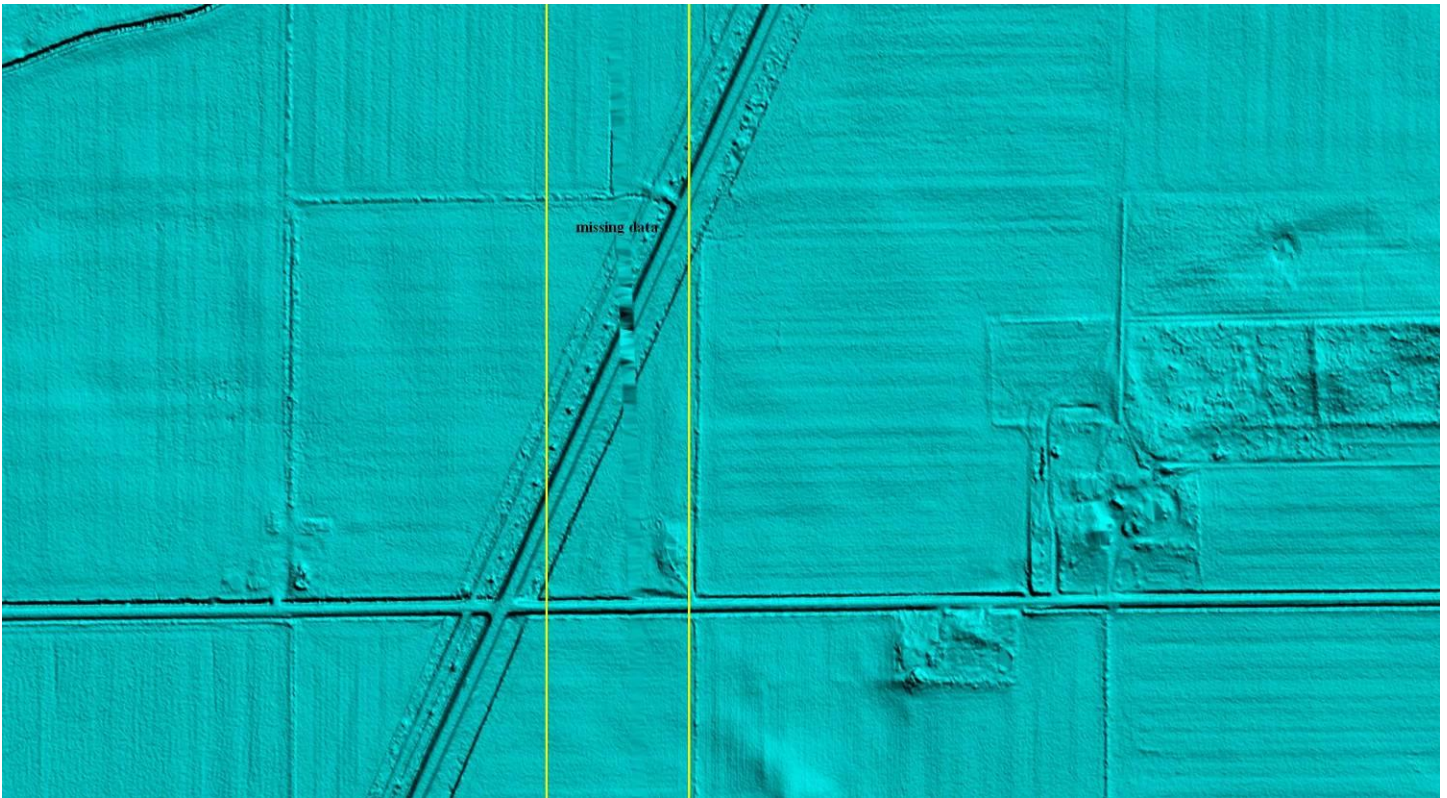
Iowa CSE 15 missing data 2



Iowa CSE 15 missing data 2 (Fixed)



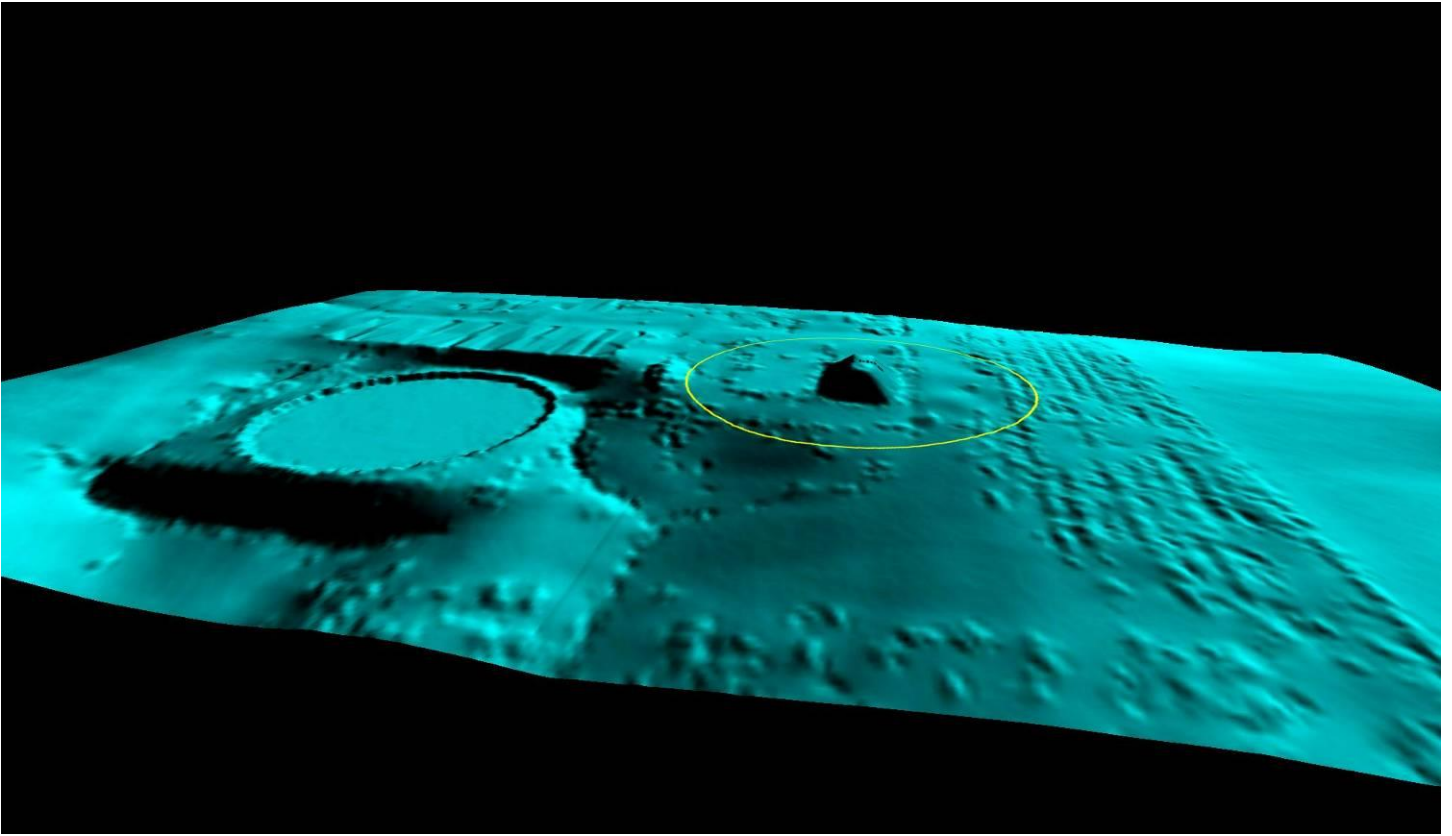
Iowa CSE 15 missing data 3



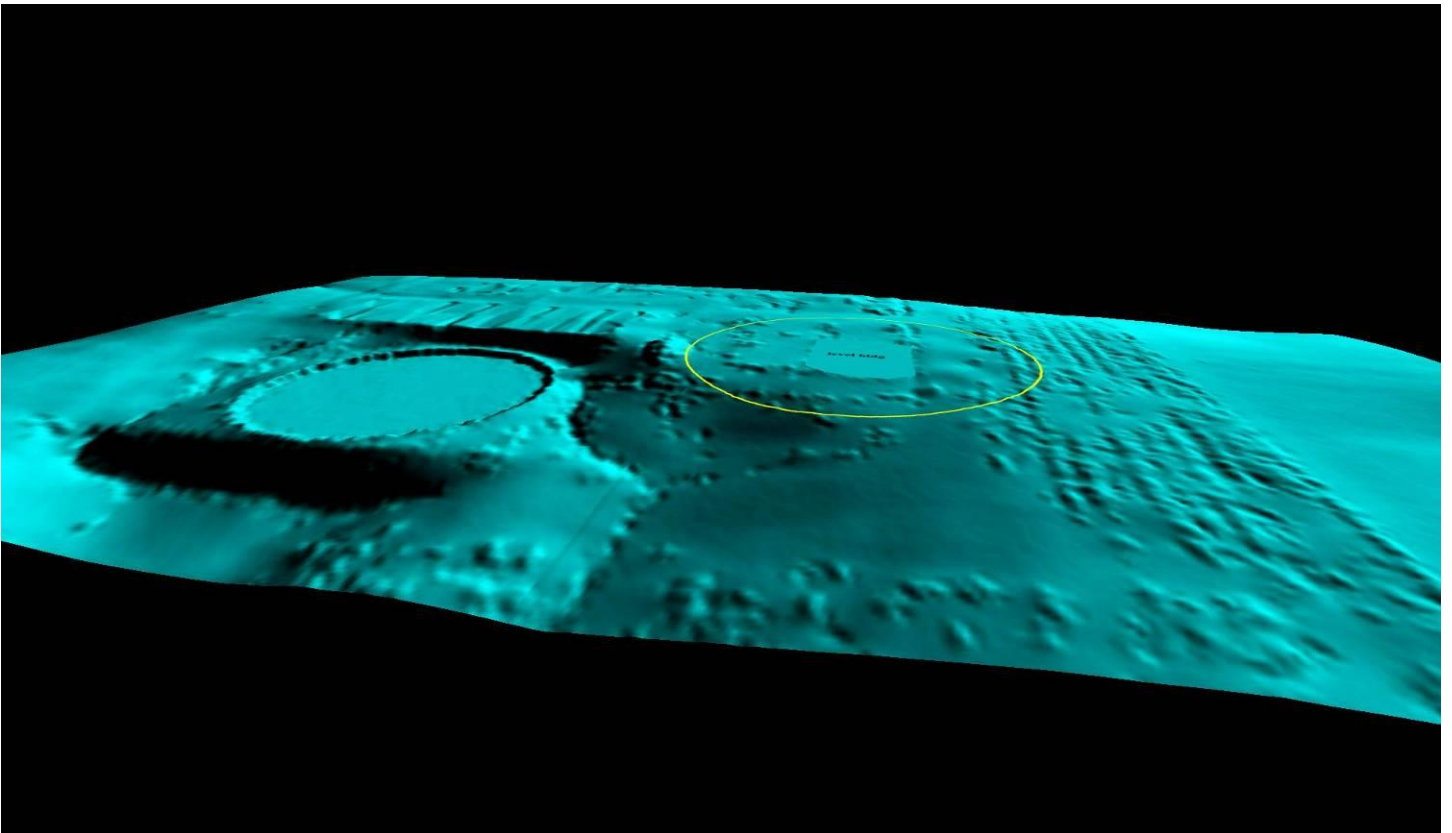
Iowa CSE 15 missing data 3 (Fixed)



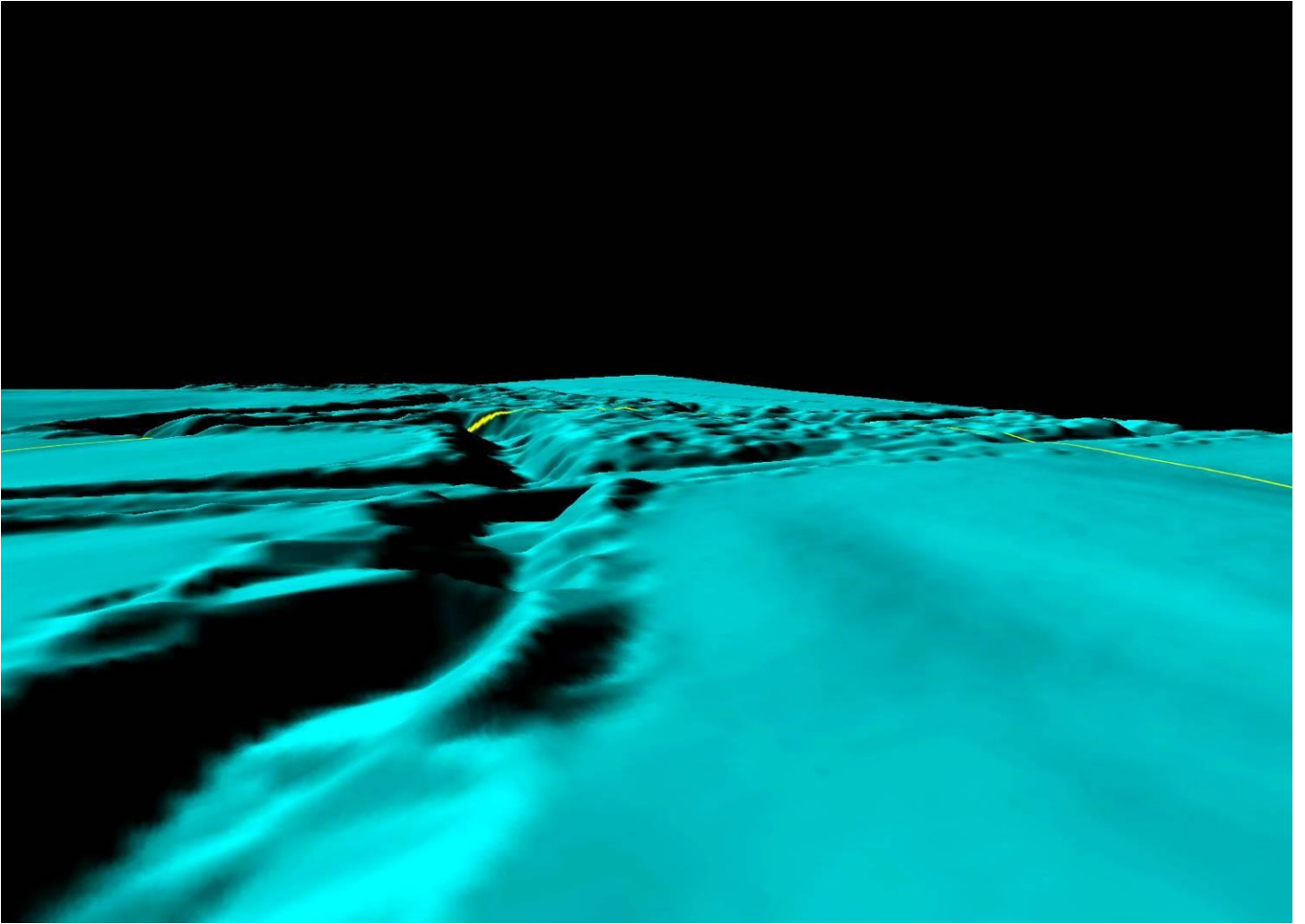
Remove bldg



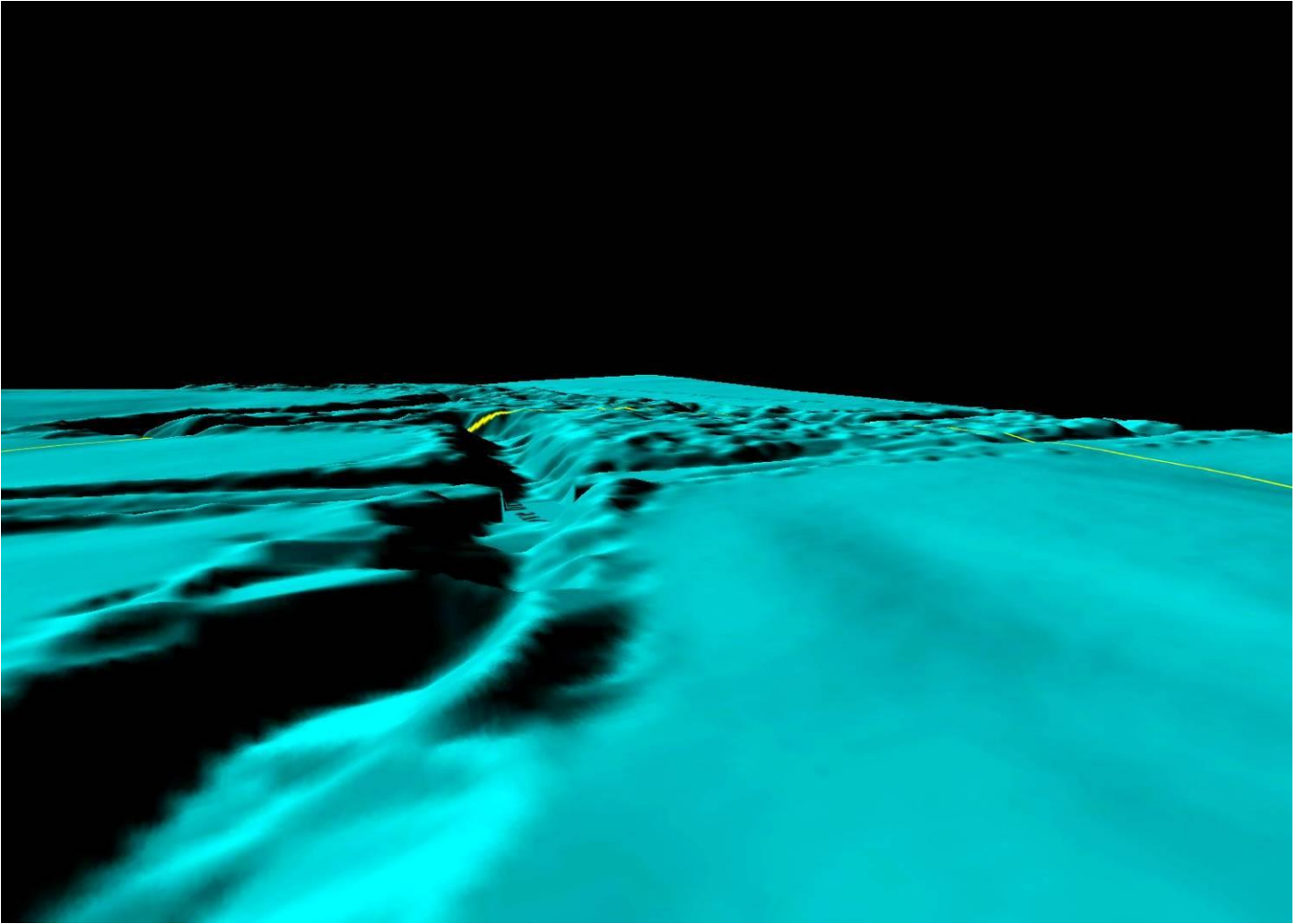
Remove bldg (Fixed)



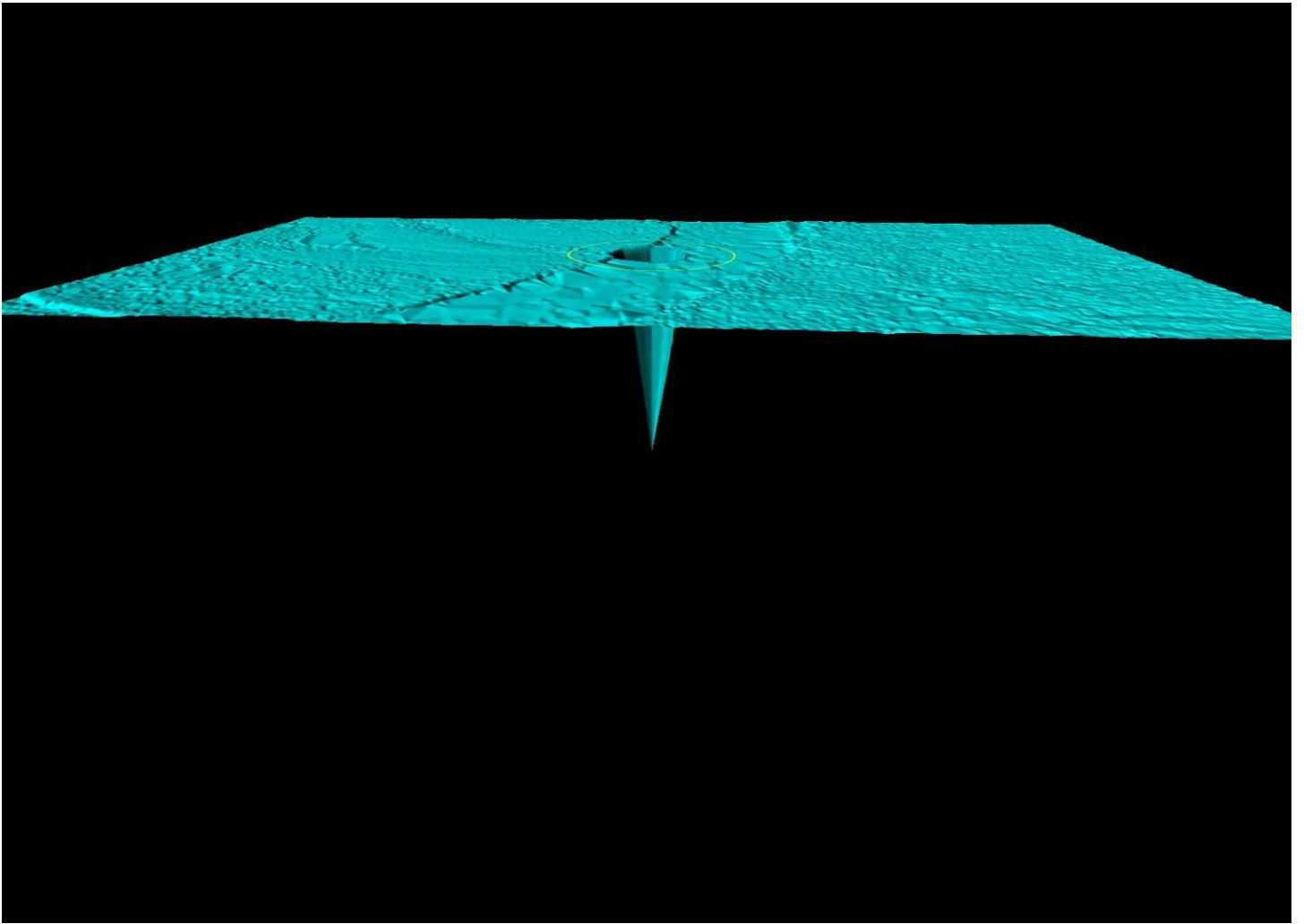
Remove bridge



Remove bridge (Fixed)



Elevation error



Elevation error (Fixed)

