

High Resolution Elevation QA Review Report

Project: Iowa CNC 01-13 CSC 01-02 Lidar 2010 Contract ID:

Liaison: Bob Lermen Partner(s): Contractor: Sanborn Map Co. Inc

Data Delivery Date: 02/10/2009, 08/30 Date Data Reviewed: 2010, 11/14/2011

Reviewer: Rusty Grout / Eric Jaramill Total Square Miles Reviewed: 4652 sq. miles

Elevation Type: LIDAR Format: xyz Grid Spacing: 1 meter Tile size: 1000 x 1000

Projection: UTM Zone: 15 Datum: NAD83 Units: Meters

Licensing: Public Domain Metadata: Project Level Acquisition Date: 04/07/2007 thru

Materials Received:

Bare earth ASCII .xyz files
Las point cloud .xyz files
Metadata
Shape files

Vertical Accuracy Test Performed: Yes Test Point Source: Contractor RMSE: 0.37 and 0.237

Vertical Accuracy Test Notes:

A vertical check was performed on Iowa CNC 01-13 and CSC 01-02 bare earth data. See the Iowa Statewide Lidar Project Vertical Accuracy Report sent with the final .img data.

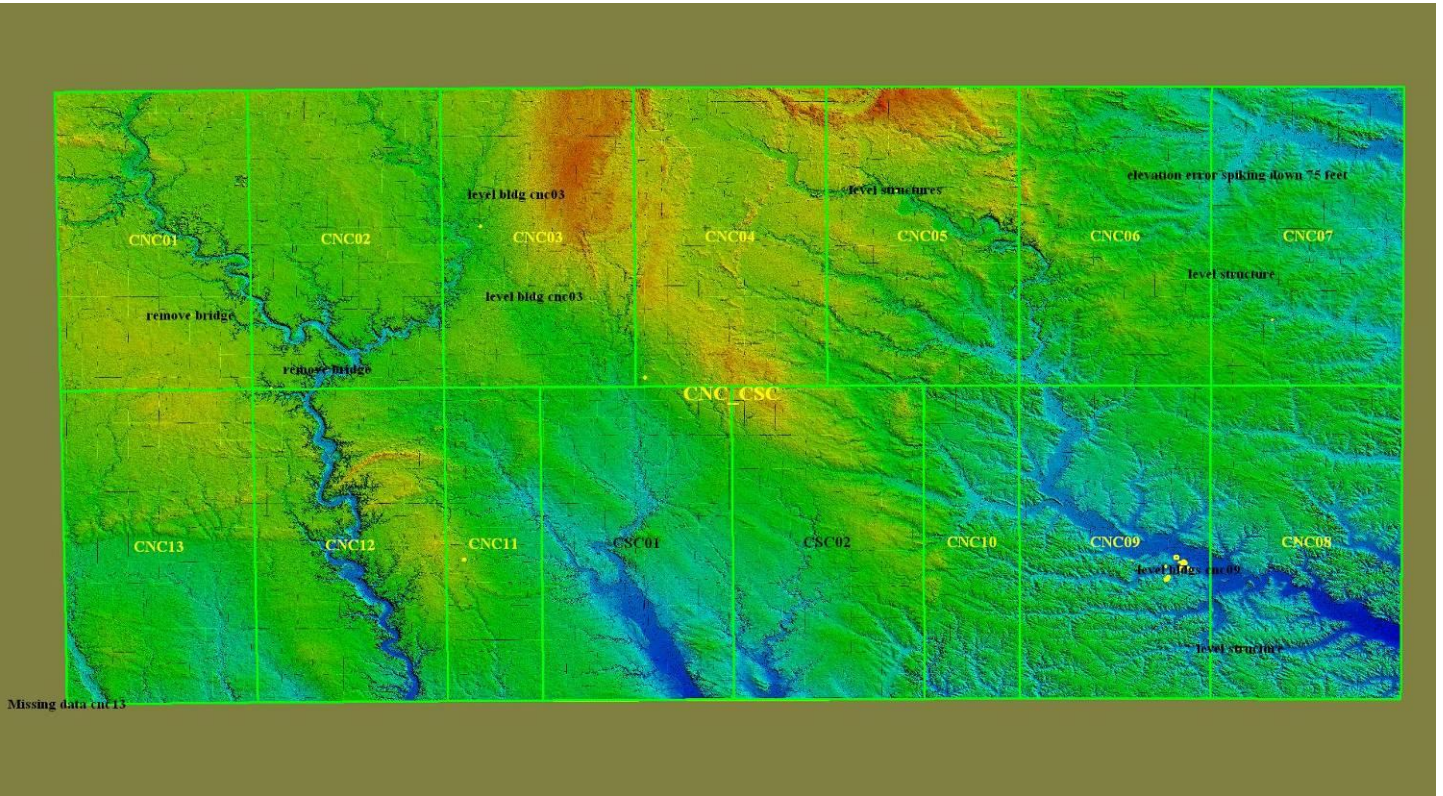
QA Review Summary:

All of Iowa CNC 01-13 and CSC 01-02 one meter Lidar data was reviewed. This data was brought into Global Mapper as .xyz point files. Las point files were created from the .xyz files then gridded to 1 meter data for QA/QC. Errors found throughout this project and fixed in Global Mapper are bridges not taken out, buildings and structures not taken out, spiking and missing data, (errors found throughout this project and not fixed are road offsets , see example below) . This 1 meter data has been regridded to 1 meter.img files. This data is accepted and will be sent to archive.

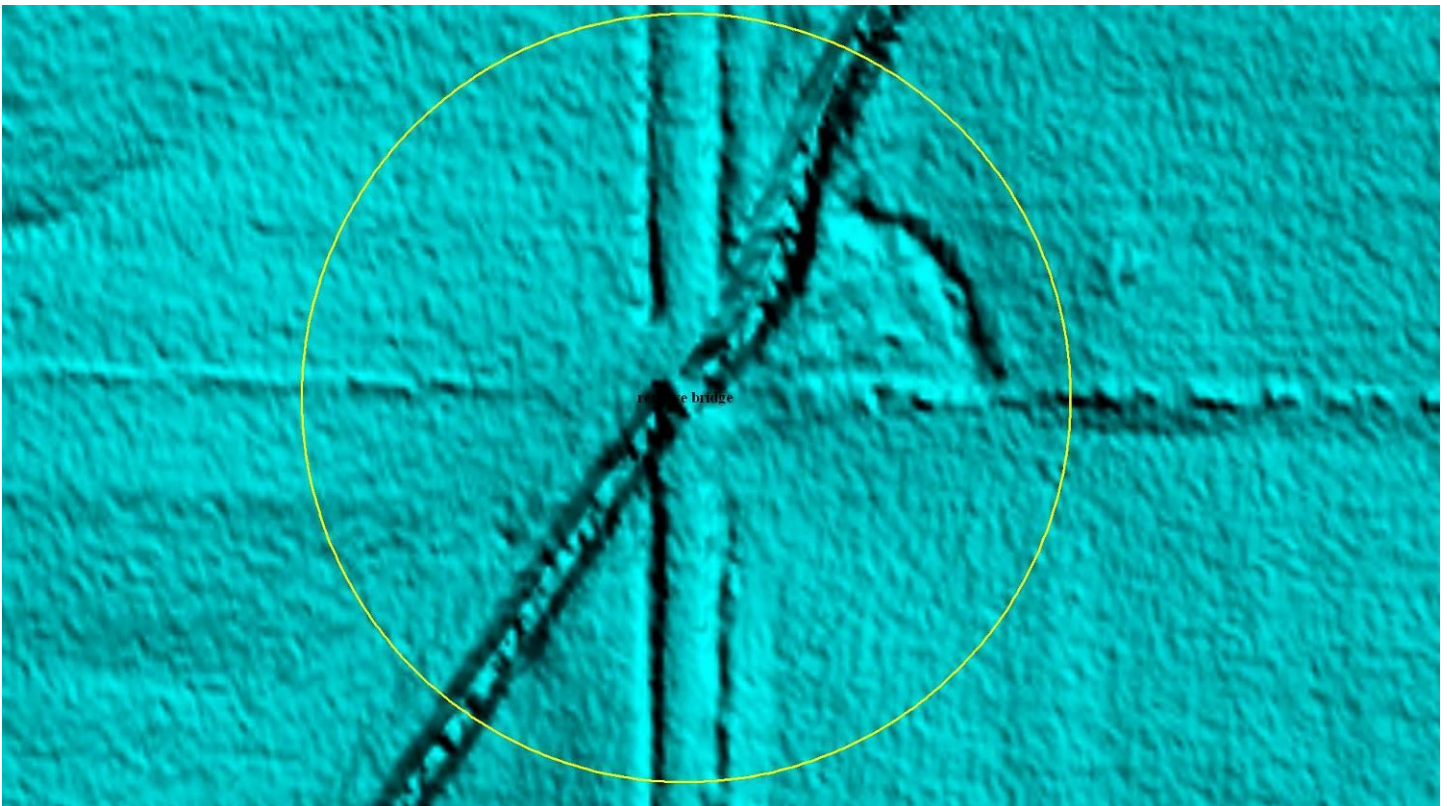
See error JPEG examples and documents attached below.

Conclusions: 1. 89% of artifacts removed
2. 90% of vegetation removed
3. 95% of buildings removed

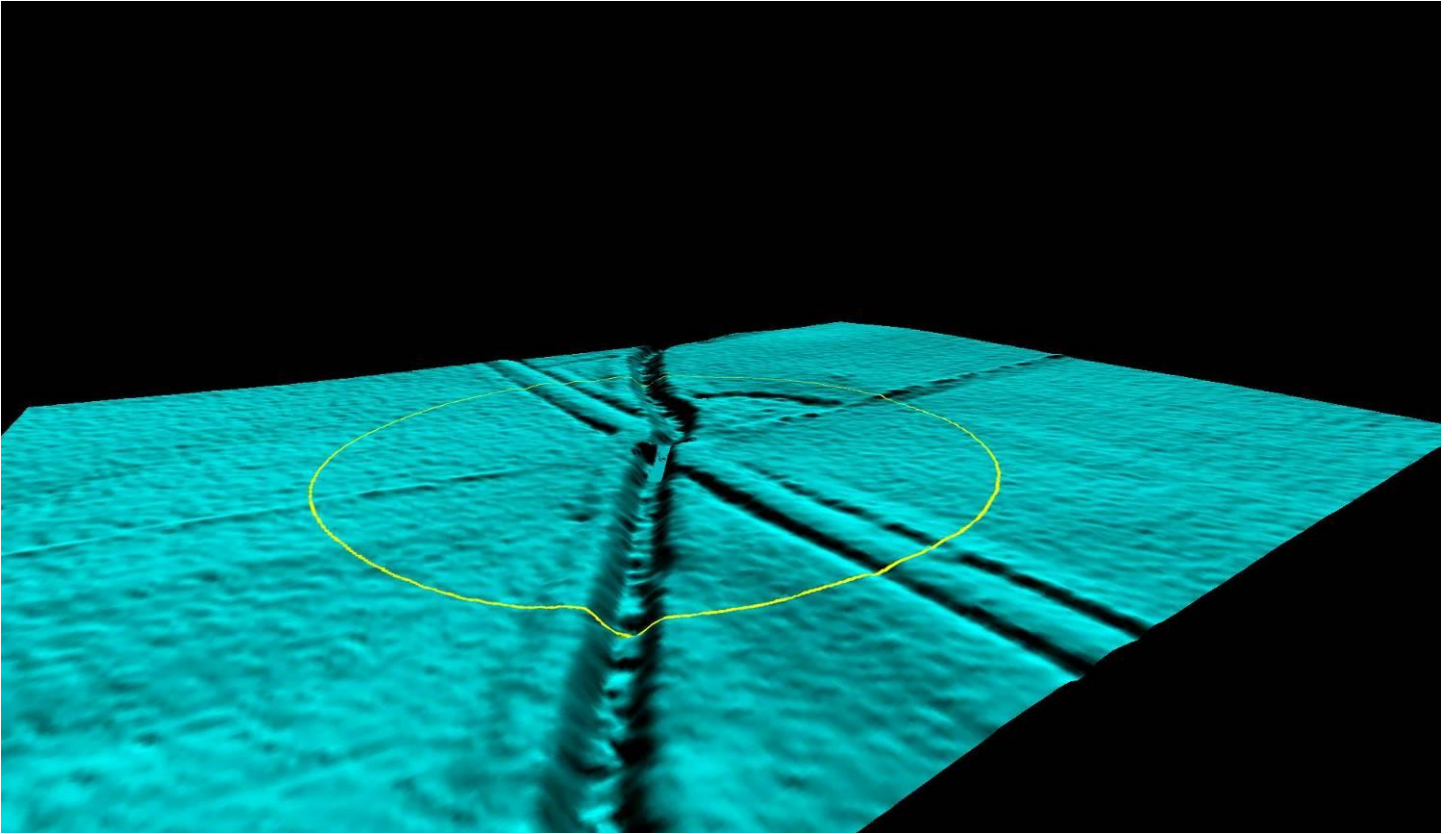
Iowa CNC 01-13 and CSC 01-02



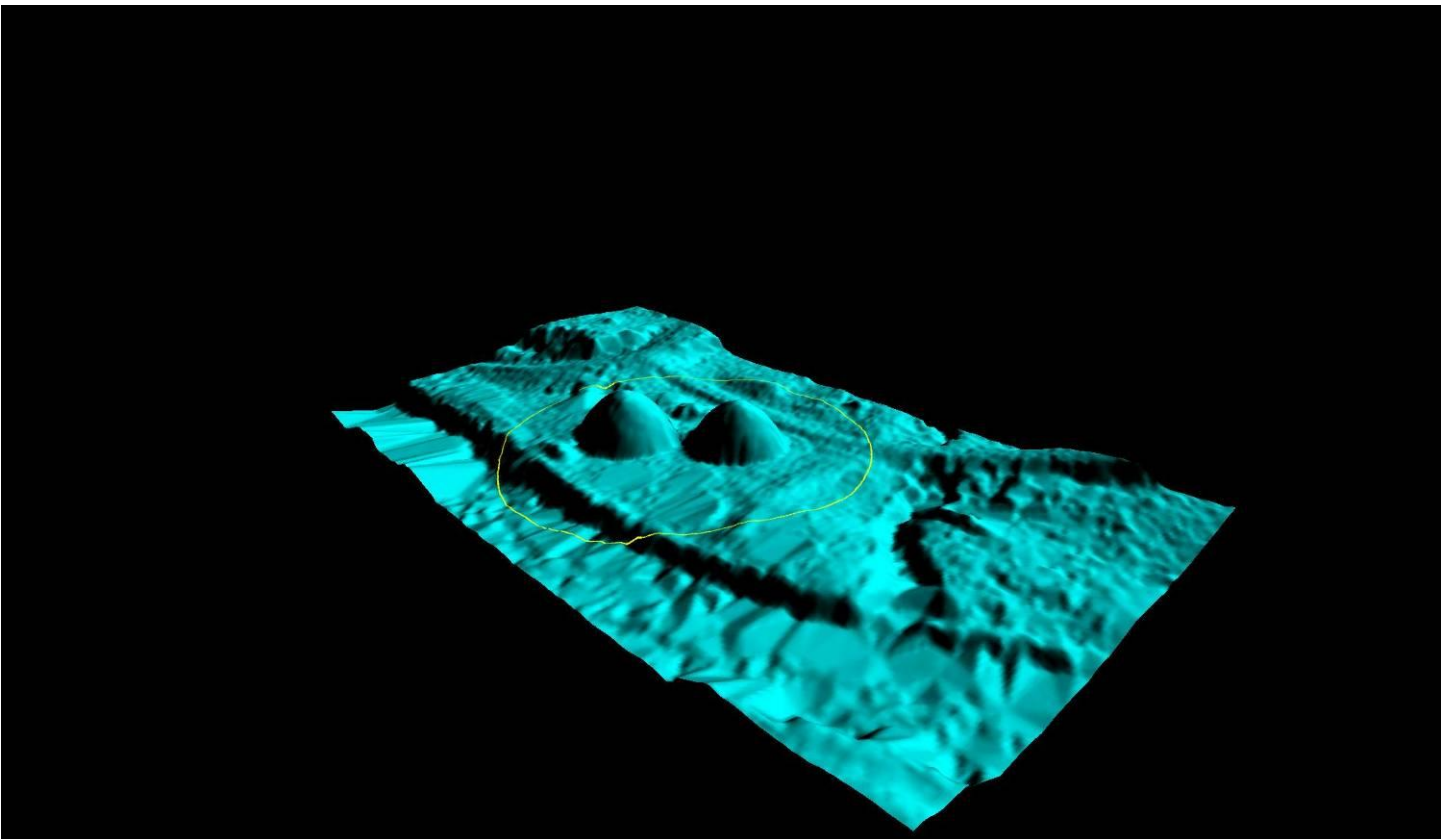
Iowa CNC 01 remove bridge



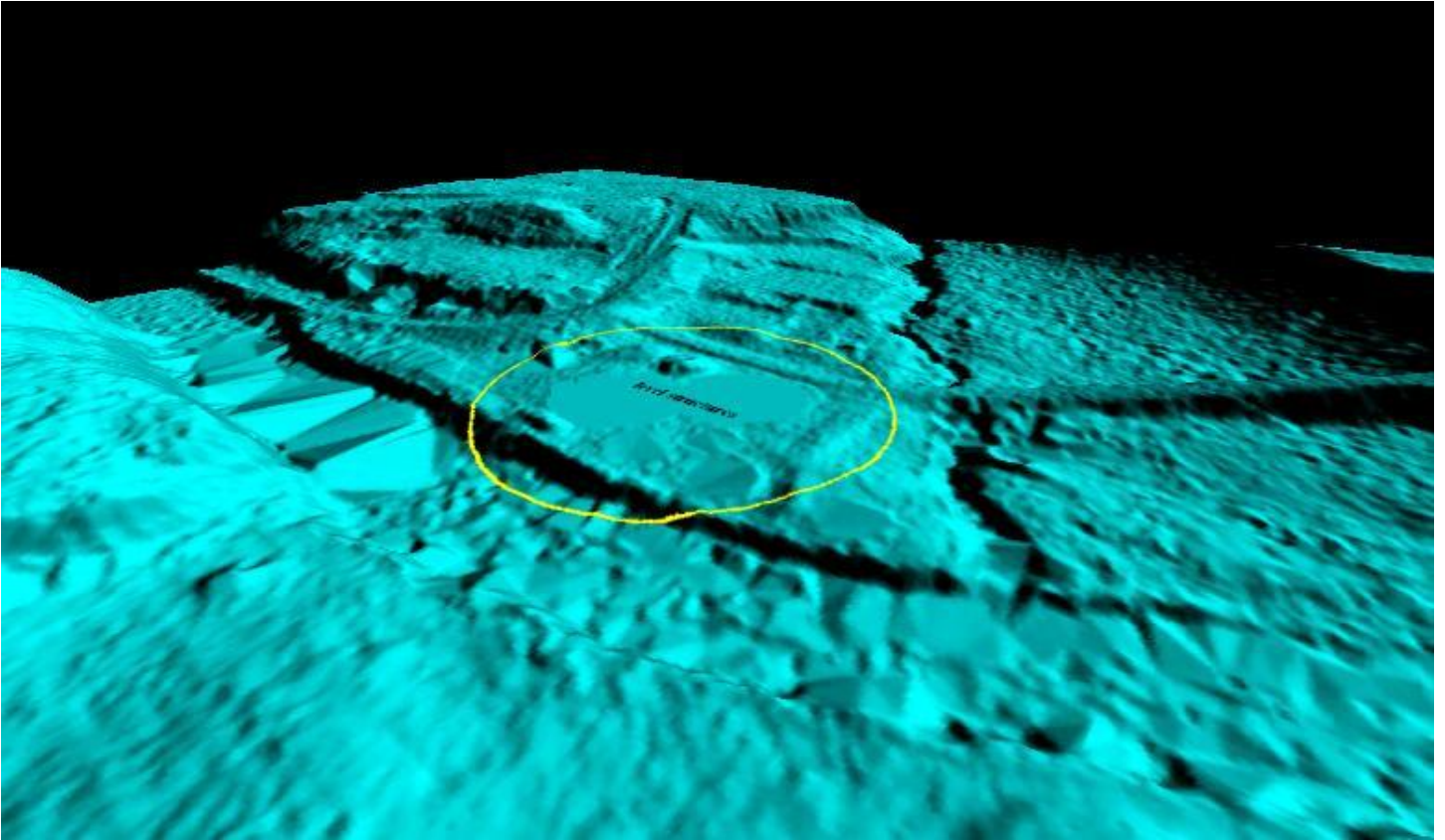
Iowa CNC 01 remove bridge (Fixed)



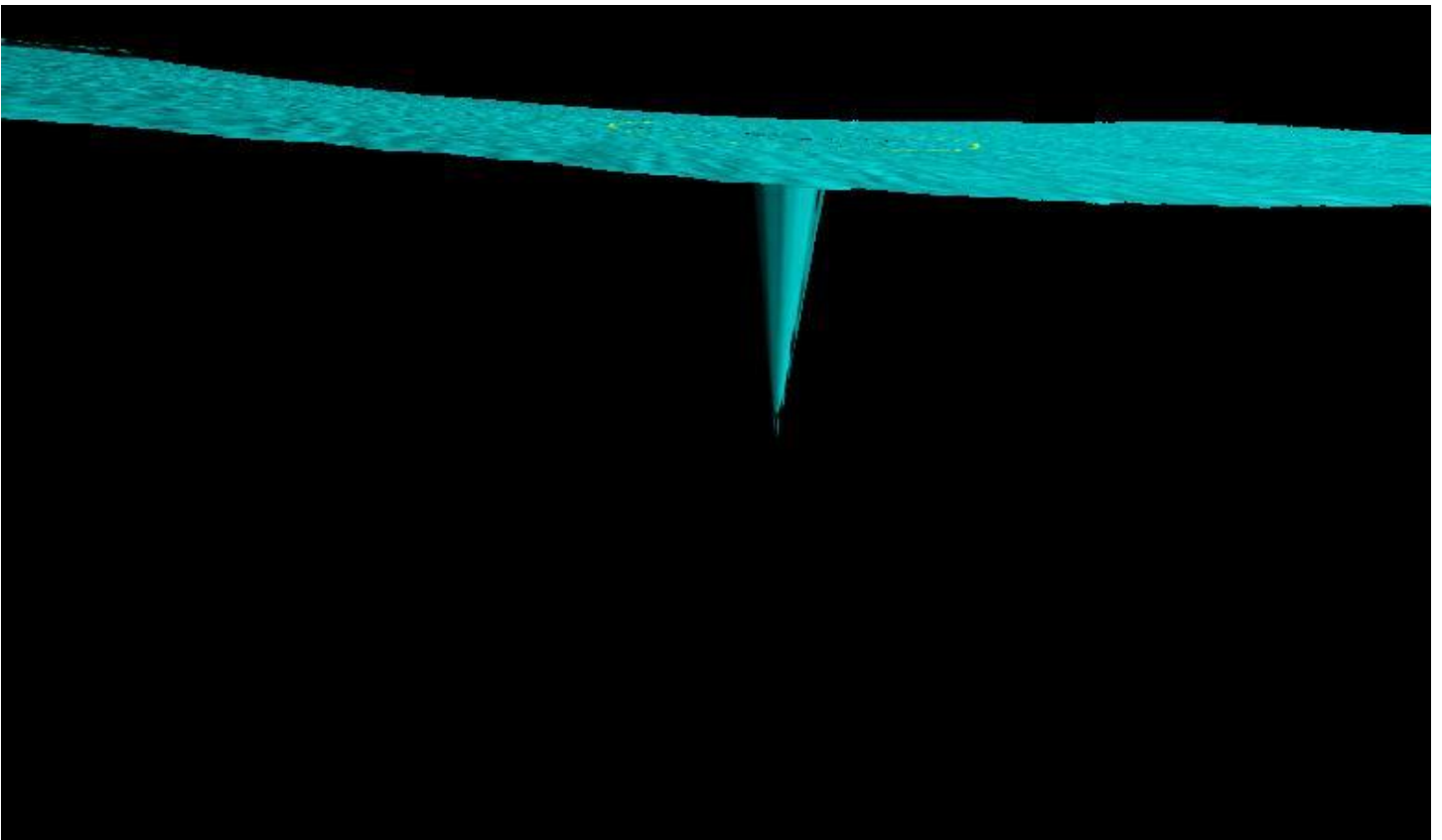
Iowa CNC 05 level structures



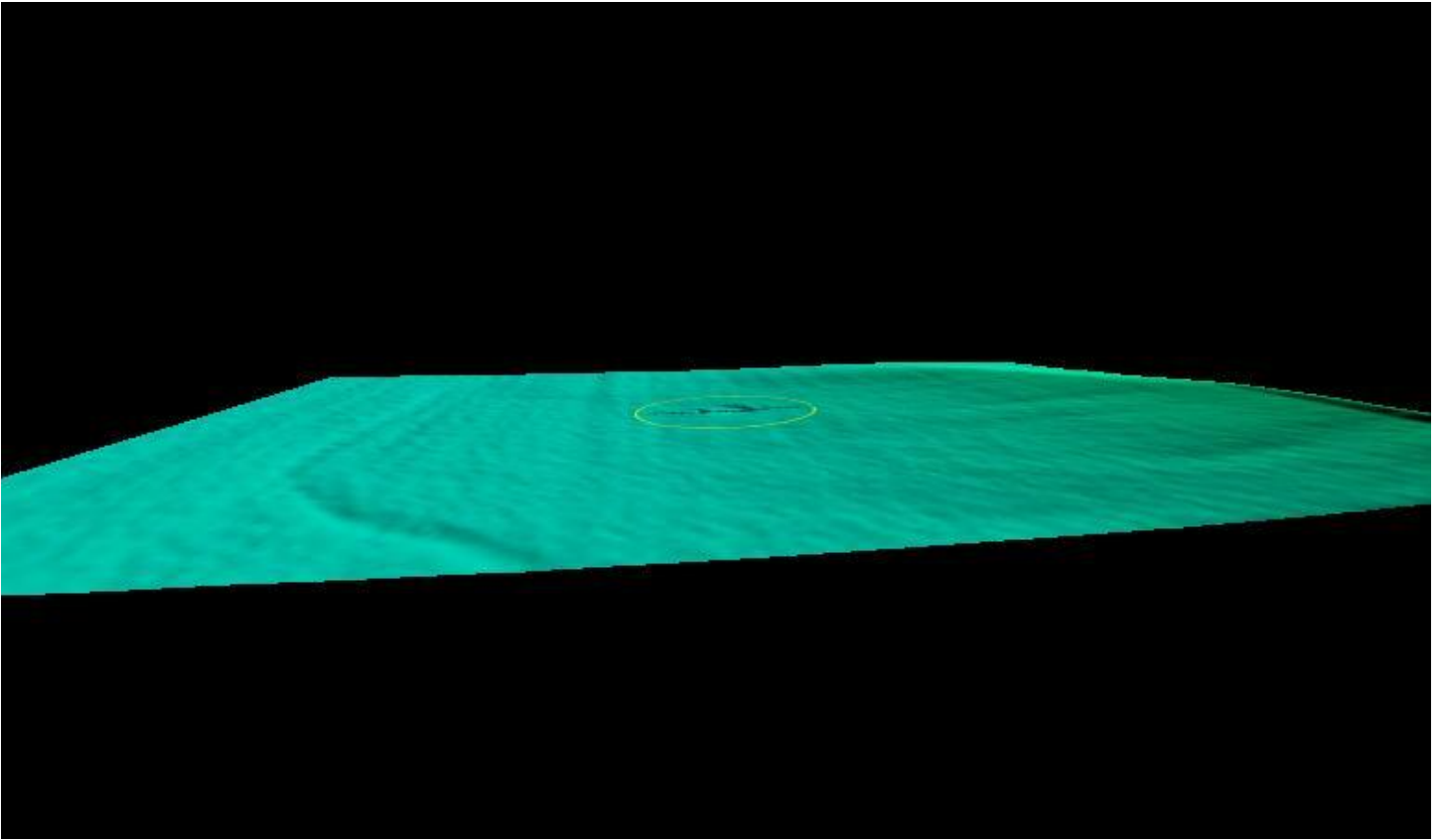
Iowa CNC 05 level structures (Fixed)



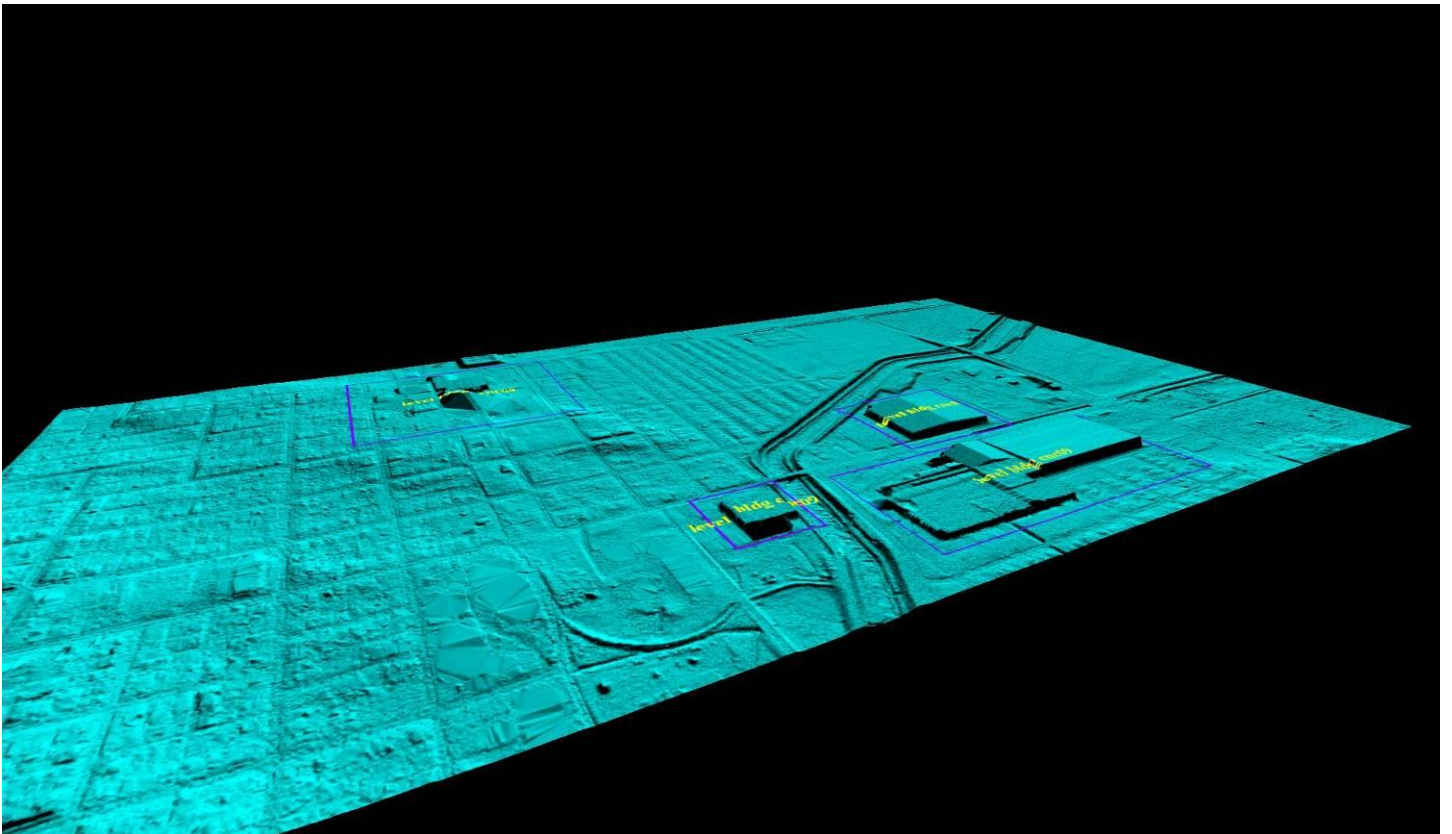
Iowa CNC 07 spiking down



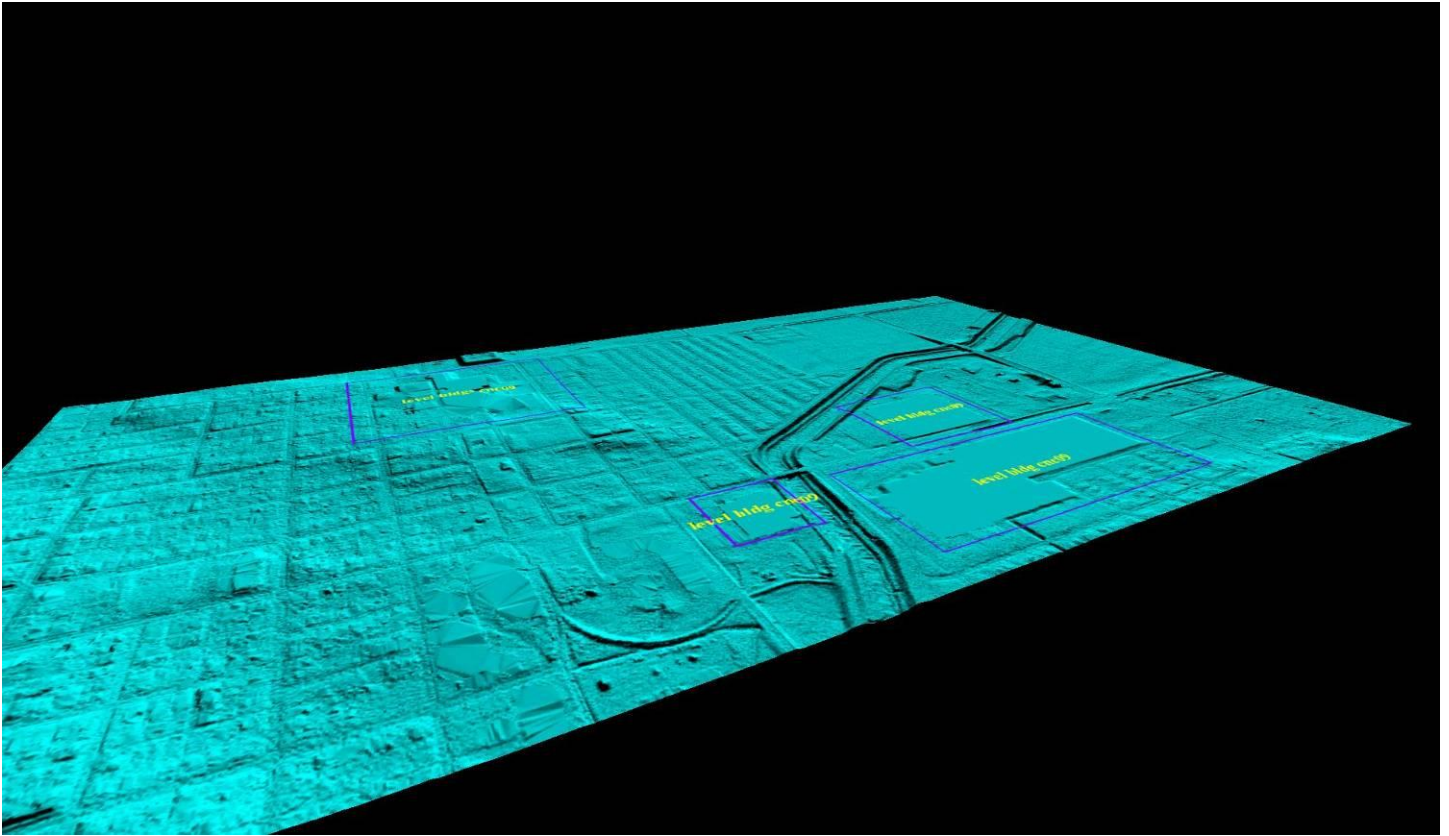
Iowa CNC 07 spiking down (Fixed)



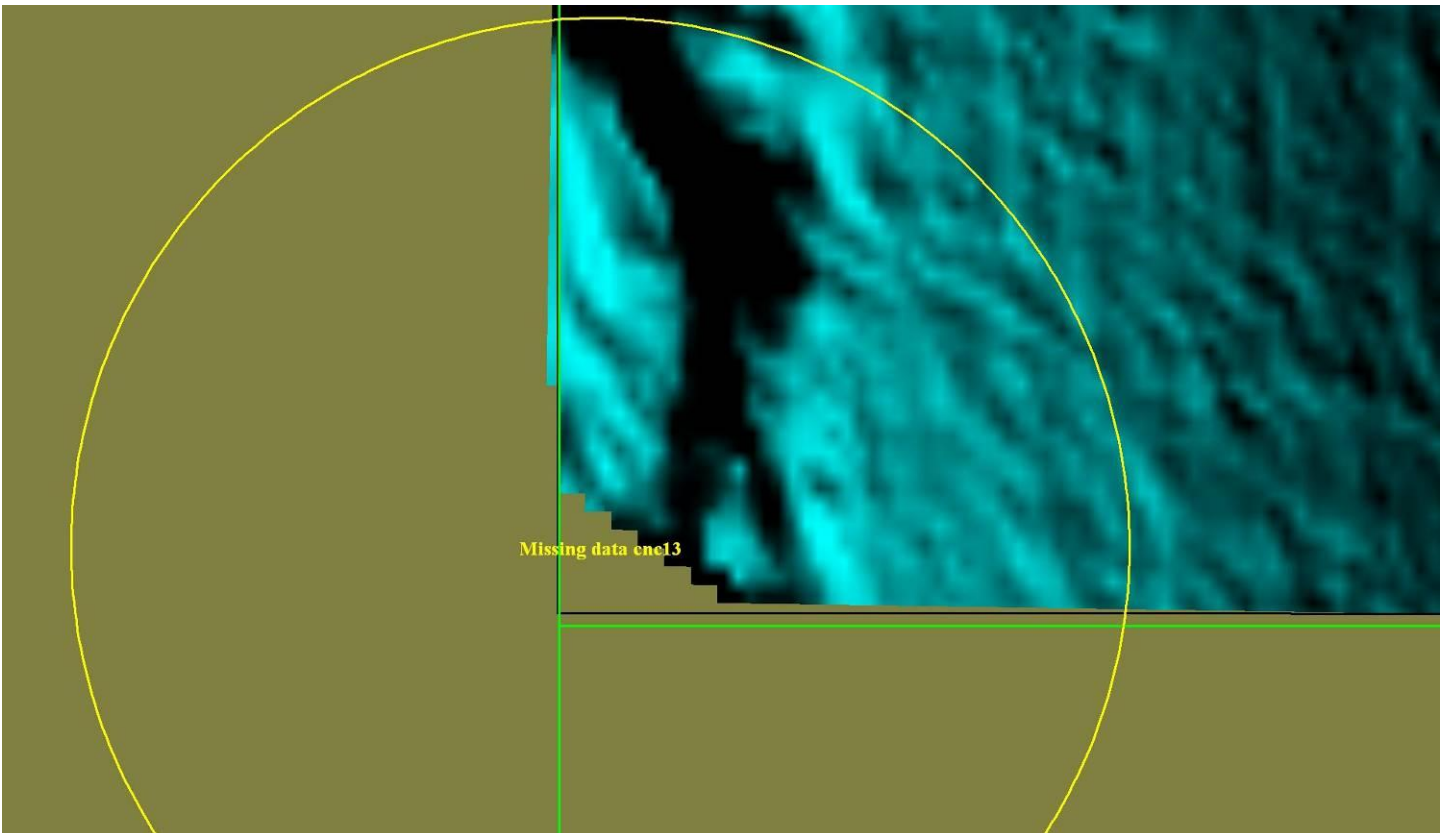
Iowa CNC 09 level buildings



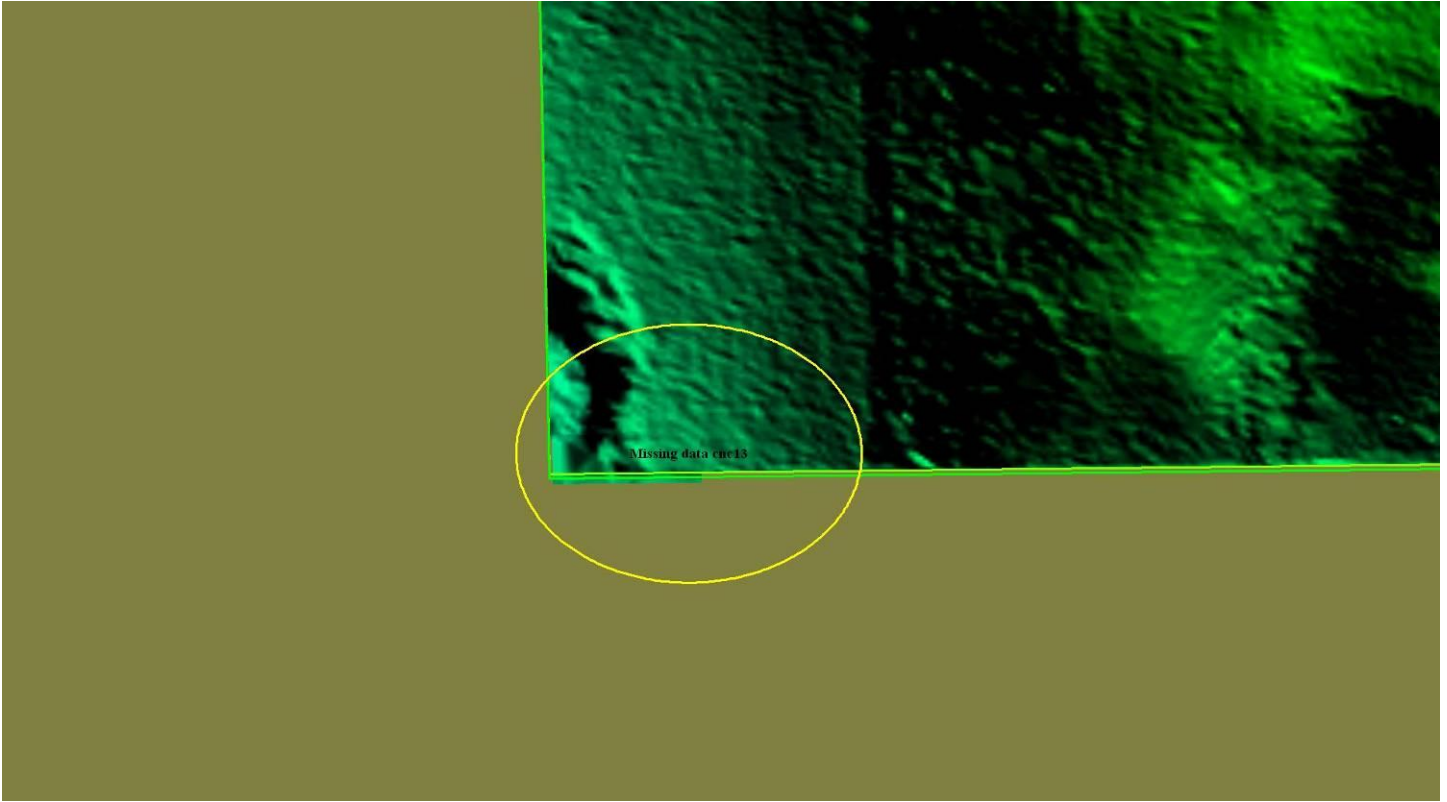
Iowa CNC 09 level buildings (Fixed)



Iowa CNC 13 missing data



Iowa CNC 13 missing data (Fixed)



Iowa CNC road offset (not fixed)

