

High Resolution Elevation QA Review Report

Project: Iowa CNE 01-17 Lidar 2010 Contract ID:

Liaison: Bob Lermen Partner(s): Contractor: Sanborn Map Co. Inc

Data Delivery Date: 02/10/2009, 07/09 Date Data Reviewed: 10/04/2009 - 10/04/2009

Reviewer: Rusty Grout / Eric Jaramill Total Square Miles Reviewed: 5544.8 sq. mi

Elevation Type: LIDAR Format: xyz Grid Spacing: 1 meter Tile size: 1000 x 1000

Projection: UTM Zone: 15 Datum: NAD83 Units: Meters

Licensing: Public Domain Metadata: Project Level Acquisition Date: 04/07/2007 thru

Materials Received:

Bare earth ASCII .xyz files
Las point cloud .xyz files
Metadata
Shape files

Vertical Accuracy Test Performed: Yes Test Point Source: Contractor RMSE: 0.298 meters

Vertical Accuracy Test Notes:

A vertical check was performed on Iowa CNE 01-17 bare earth data. See the Iowa Statewide Lidar Project Vertical Accuracy Report sent with the final .img data.

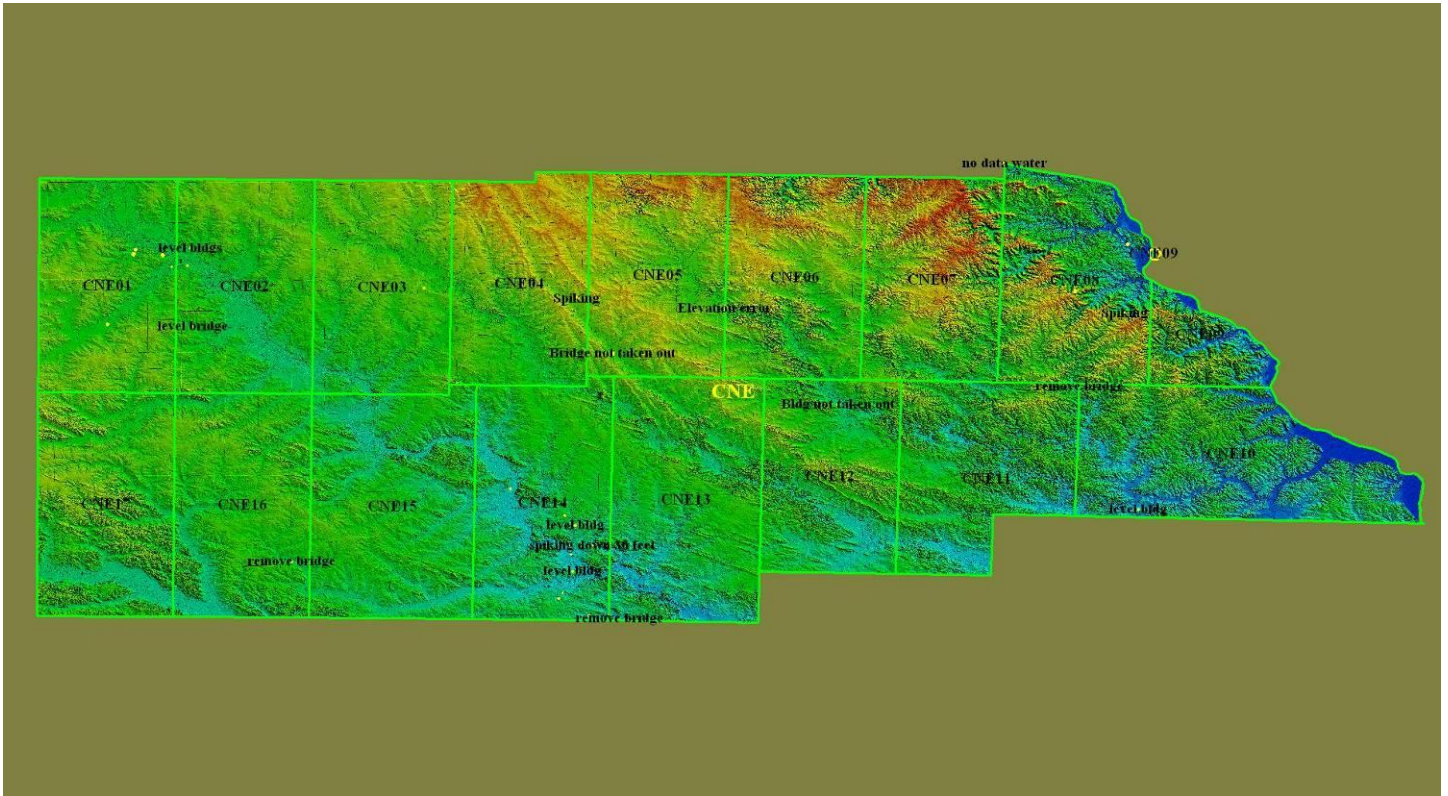
QA Review Summary:

All of Iowa CNE 01-17 one meter Lidar data was reviewed. This data was brought into Global Mapper as .xyz point files. Las point files were created from the .xyz files then gridded to 1 meter data for QA/QC. Errors found throughout this project and fixed in Global Mapper are bridges not taken out, buildings and structures not taken out, spiking and missing data, (errors found throughout this project and not fixed are road offsets, see example below) . This 1 meter data has been regridded 1 meter .img files. This data is accepted and will be sent to archive.

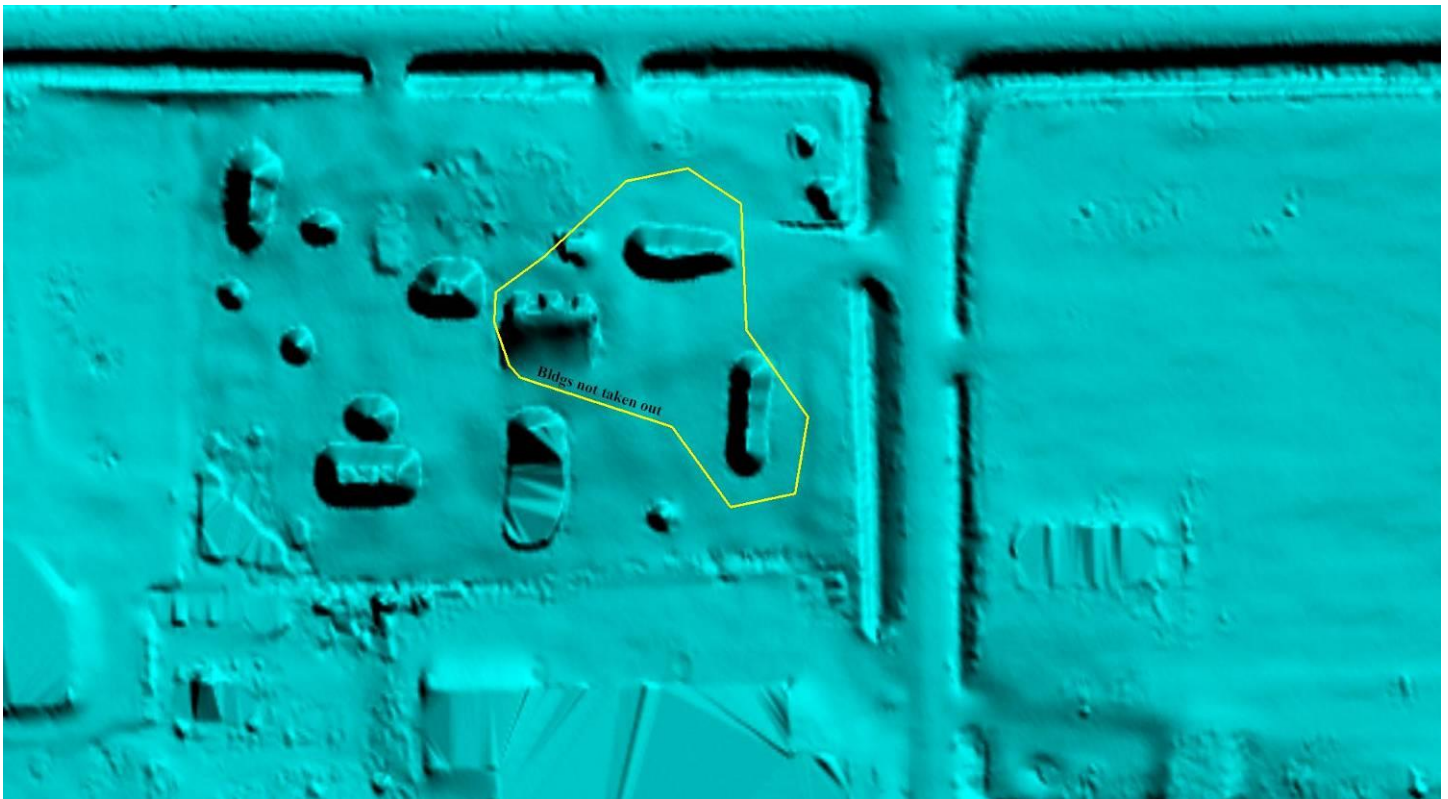
See error JPEG examples and documents attached below.

Conclusions: 1. 89% of artifacts removed
2. 90% of vegetation removed
3. 95% of buildings removed

Iowa CNE 01-17



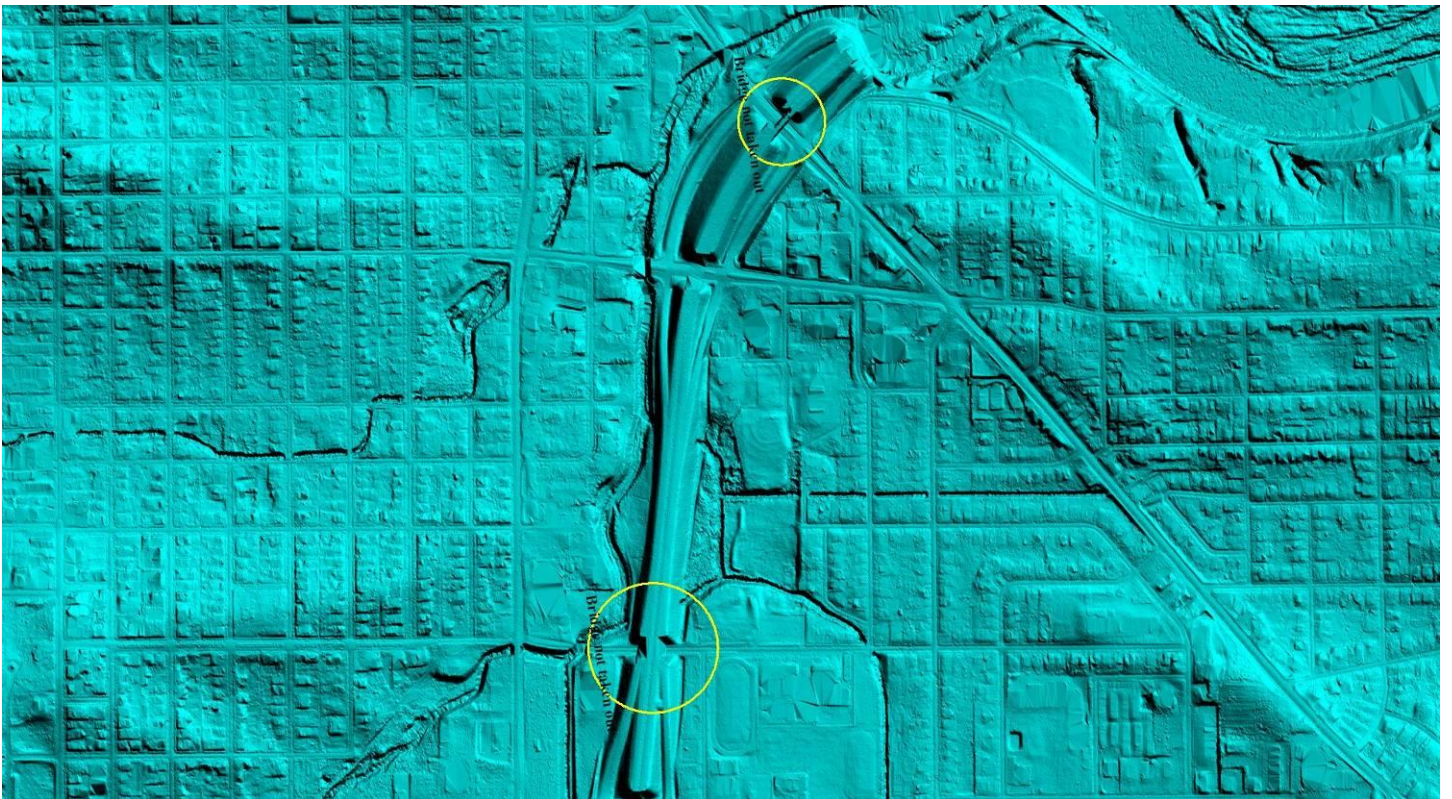
Iowa CNE buildings not taken out



Iowa CNE buildings not taken out (Fixed)



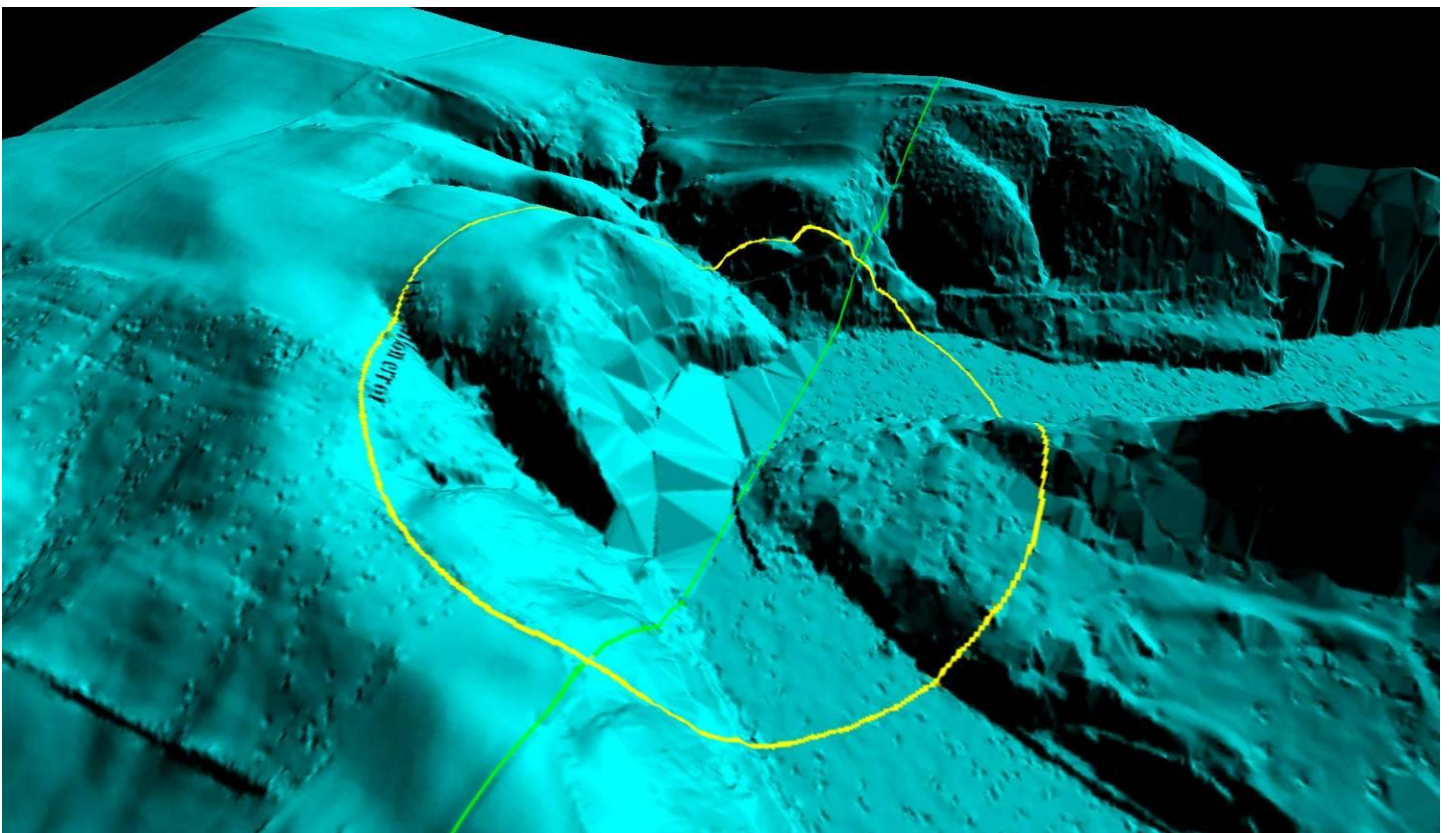
Iowa CNE bridges not taken out



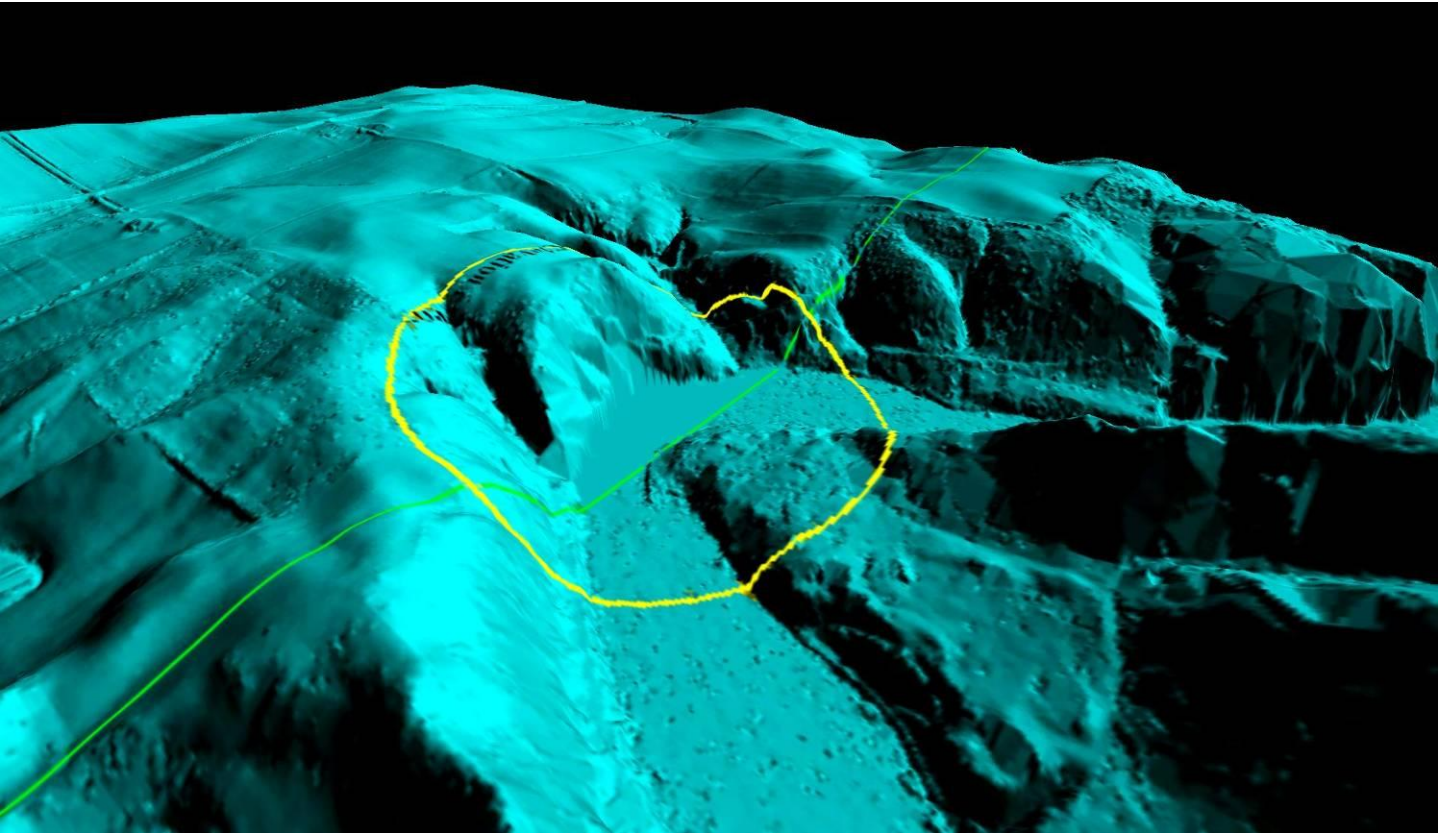
Iowa CNE bridges not taken out (Fixed)



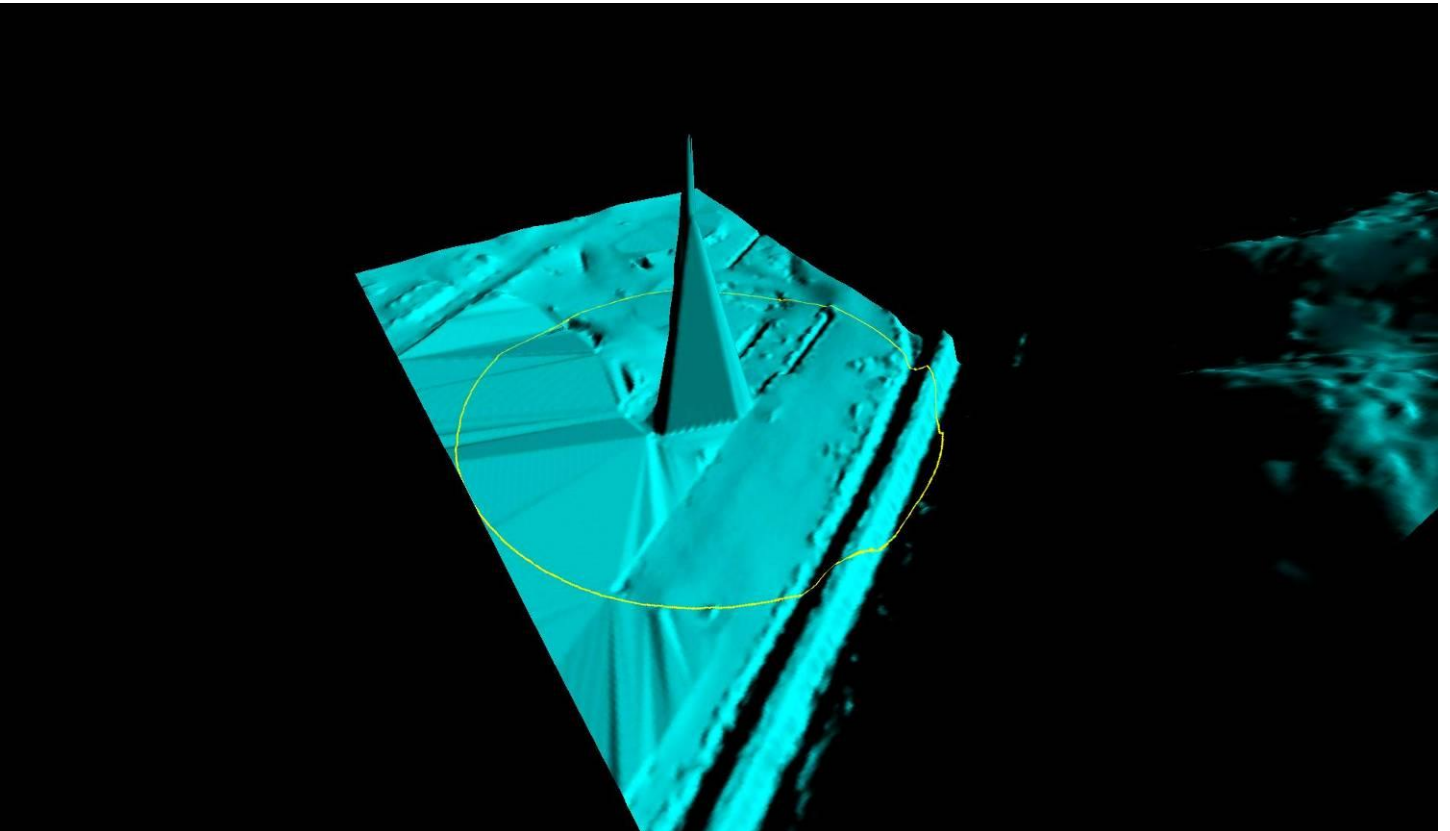
Iowa CNE elevation error



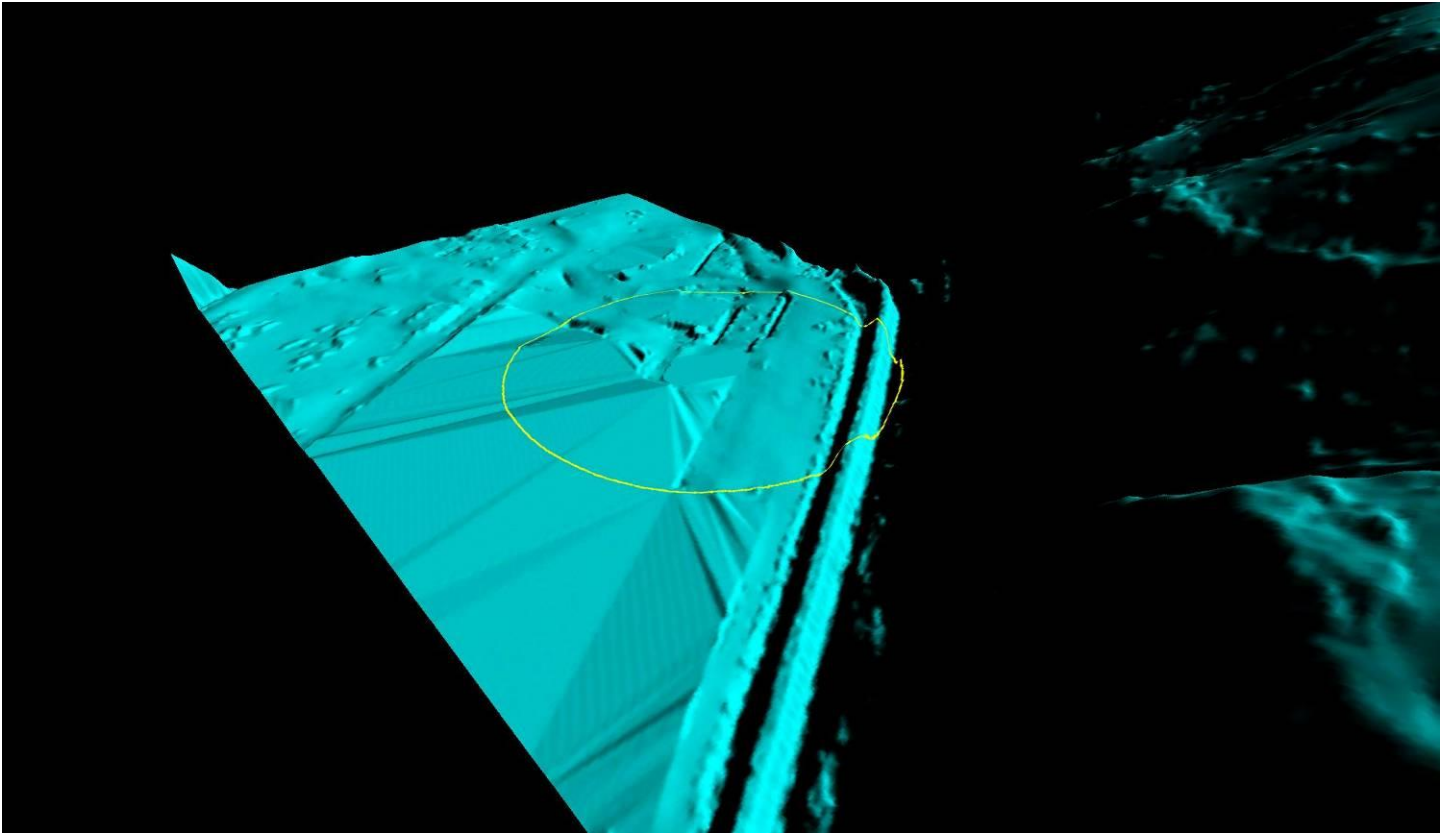
Iowa CNE elevation error (Fixed)



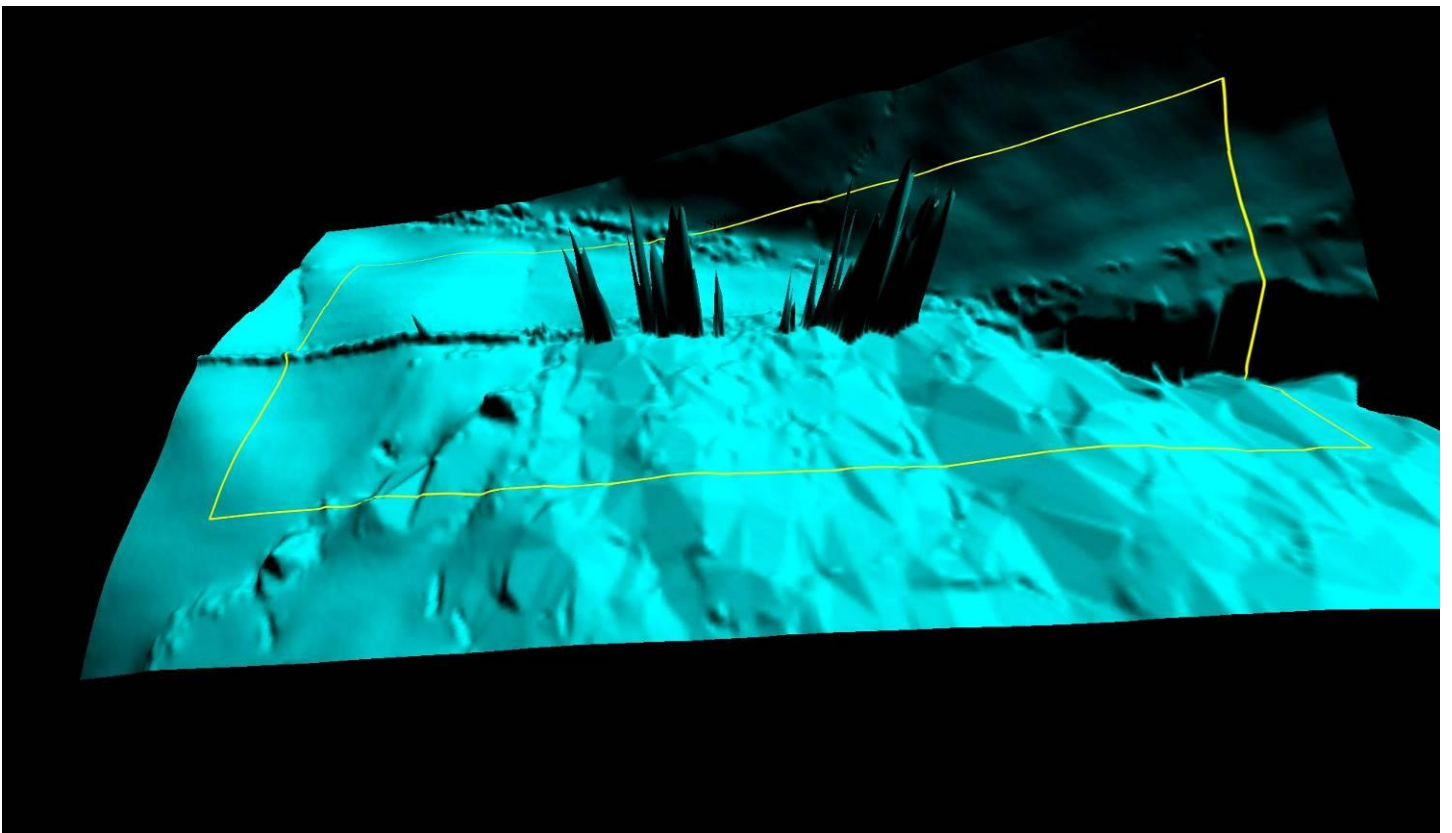
Iowa CNE spiking 1



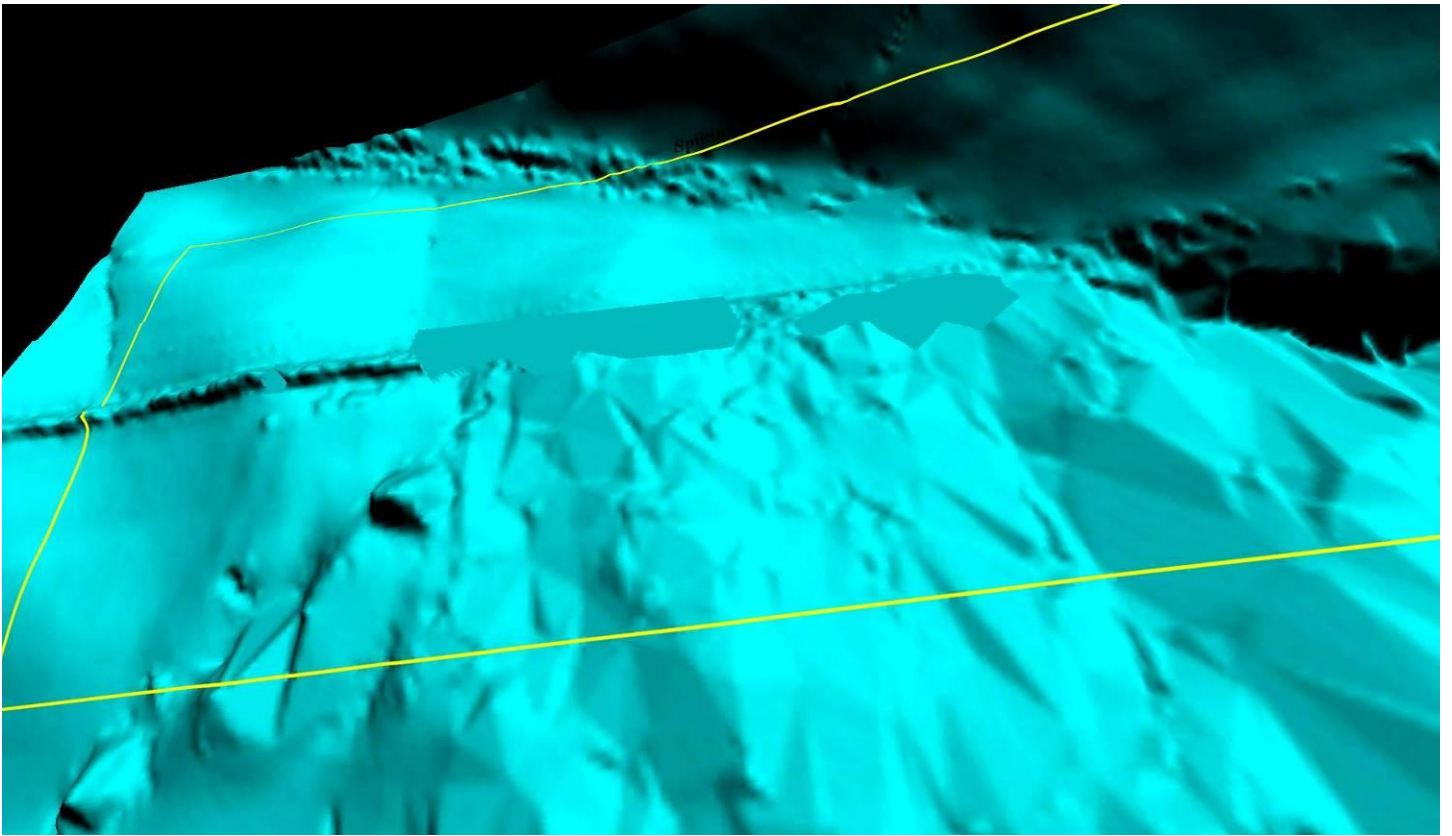
Iowa CNE spiking 1 (Fixed)



Iowa CNE spiking 2



Iowa CNE spiking 2 (Fixed)



Iowa CNE road offset (Not fixed)

