

High Resolution Elevation QA Review Report

Project: Iowa CNW 01-18 Lidar 2010 Contract ID:

Liaison: Bob Lermen Partner(s): Contractor: Sanborn Map Co. Inc

Data Delivery Date: 02/10/2009 Date Data Reviewed: 10/22/2009 - 10/22/2009

Reviewer: Rusty Grout / Eric Jaramill Total Square Miles Reviewed: 5347.4 sq. mi

Elevation Type: LIDAR Format: xyz Grid Spacing: 1 meter Tile size: 1000 x 1000

Projection: UTM Zone: 15 Datum: NAD83 Units: Meters

Licensing: Public Domain Metadata: Project Level Acquisition Date: 04/07/2007 thru 04/07/2007

Materials Received:

Bare earth ASCII .xyz files
Las point cloud .xyz files
Metadata
Shape files

Vertical Accuracy Test Performed: Yes Test Point Source: Contractor RMSE: 0.223. meters

Vertical Accuracy Test Notes:

A vertical check was performed on Iowa CNW 01-18 bare earth data. See the Iowa Statewide Lidar Project Vertical Accuracy Report sent with the final .img data.

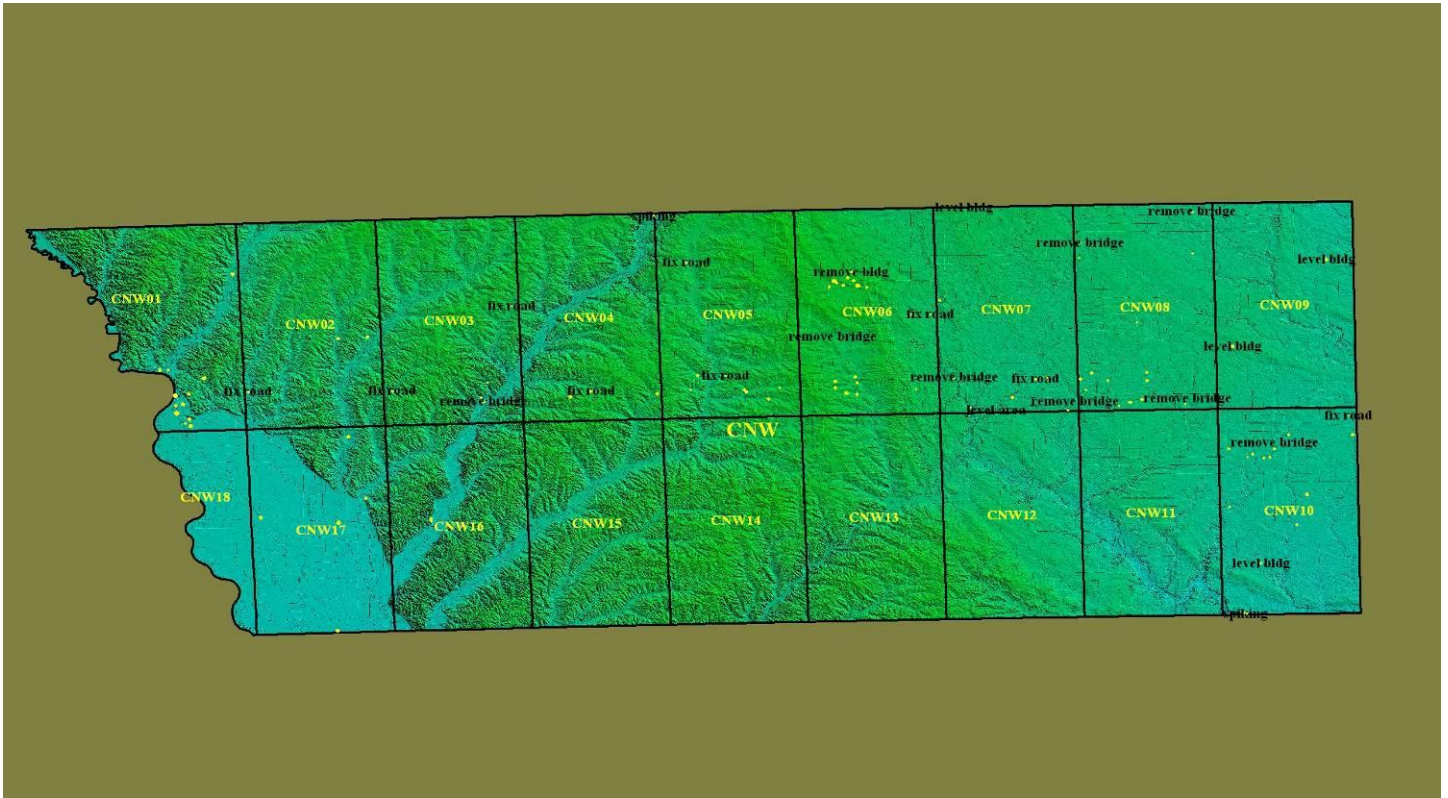
QA Review Summary:

All of Iowa CNW 01-18 one meter Lidar data was reviewed. This data was brought into Global Mapper as .xyz point files. Las point files were created from the .xyz files then gridded to 1 meter data for QA/QC. Errors found throughout this project and fixed in Global Mapper are bridges not taken out, buildings and structures not taken out, spiking and missing data, (errors found throughout this project and not fixed are road offsets, see example below) . This 1 meter data has been regridded 1 meter.img file. This data is accepted and will be sent to archive.

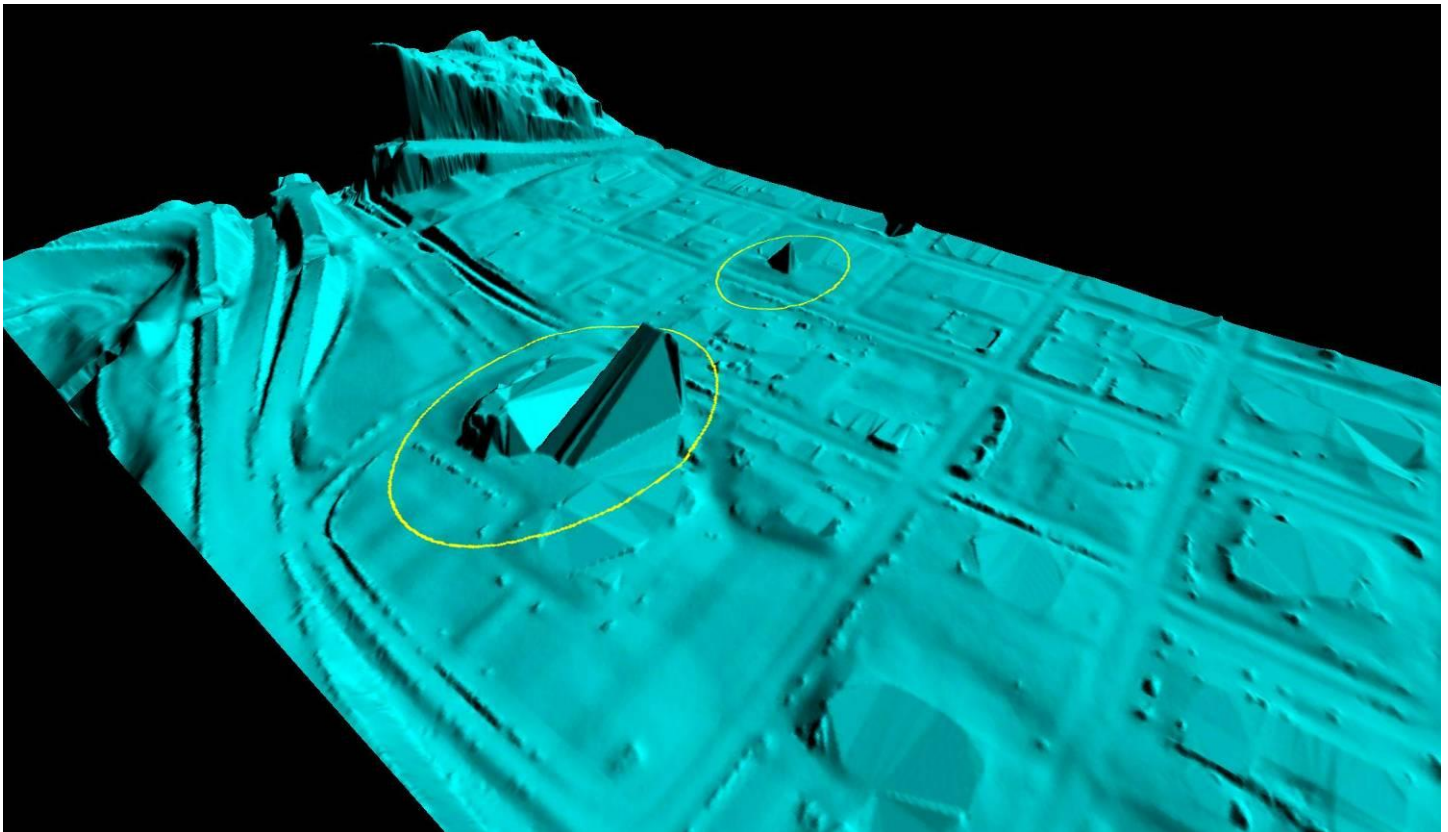
See error JPEG examples and documents attached below.

Conclusions: 1. 89% of artifacts removed
2. 90% of vegetation removed
3. 95% of buildings removed

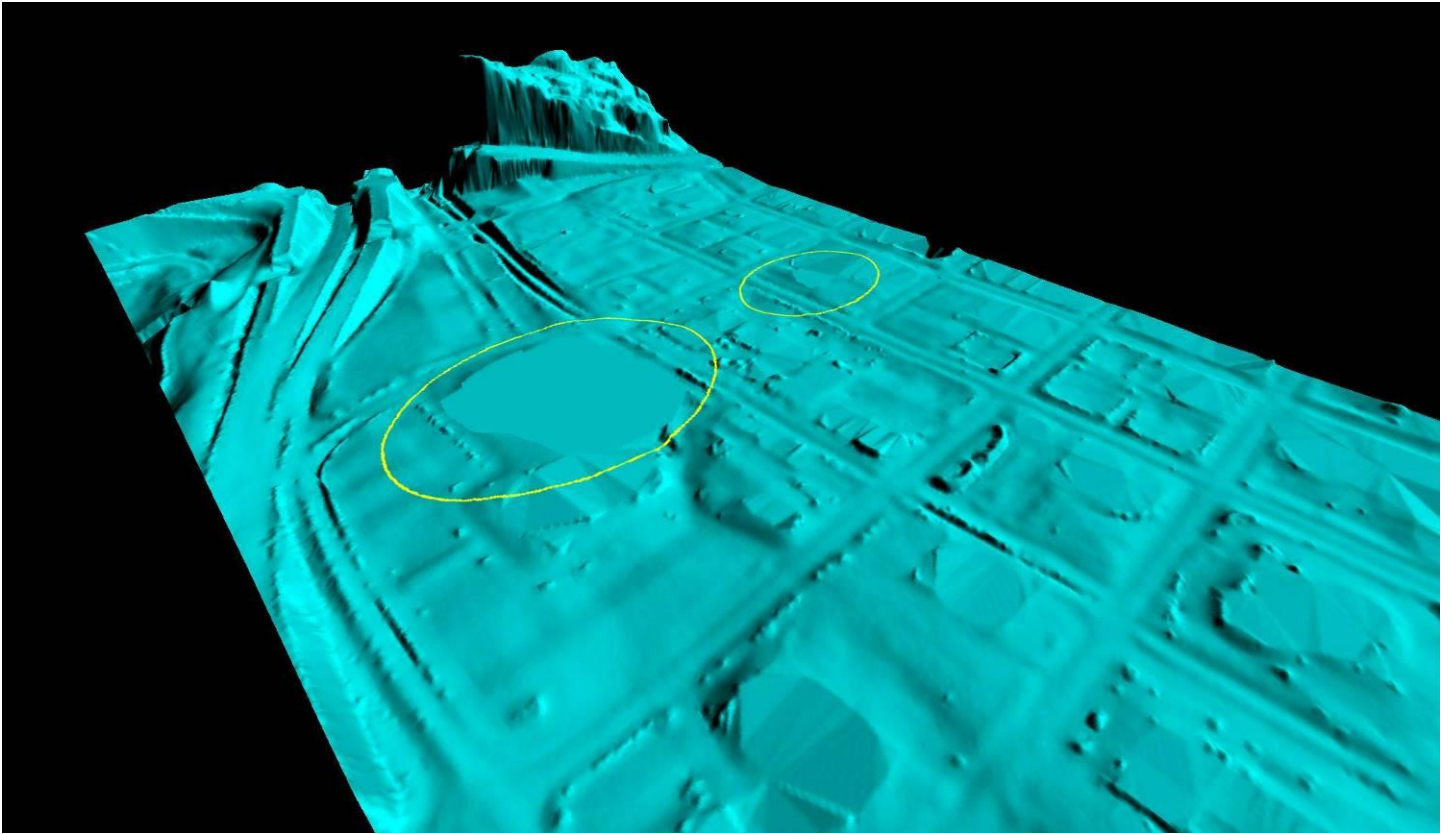
Iowa CNW 01-18



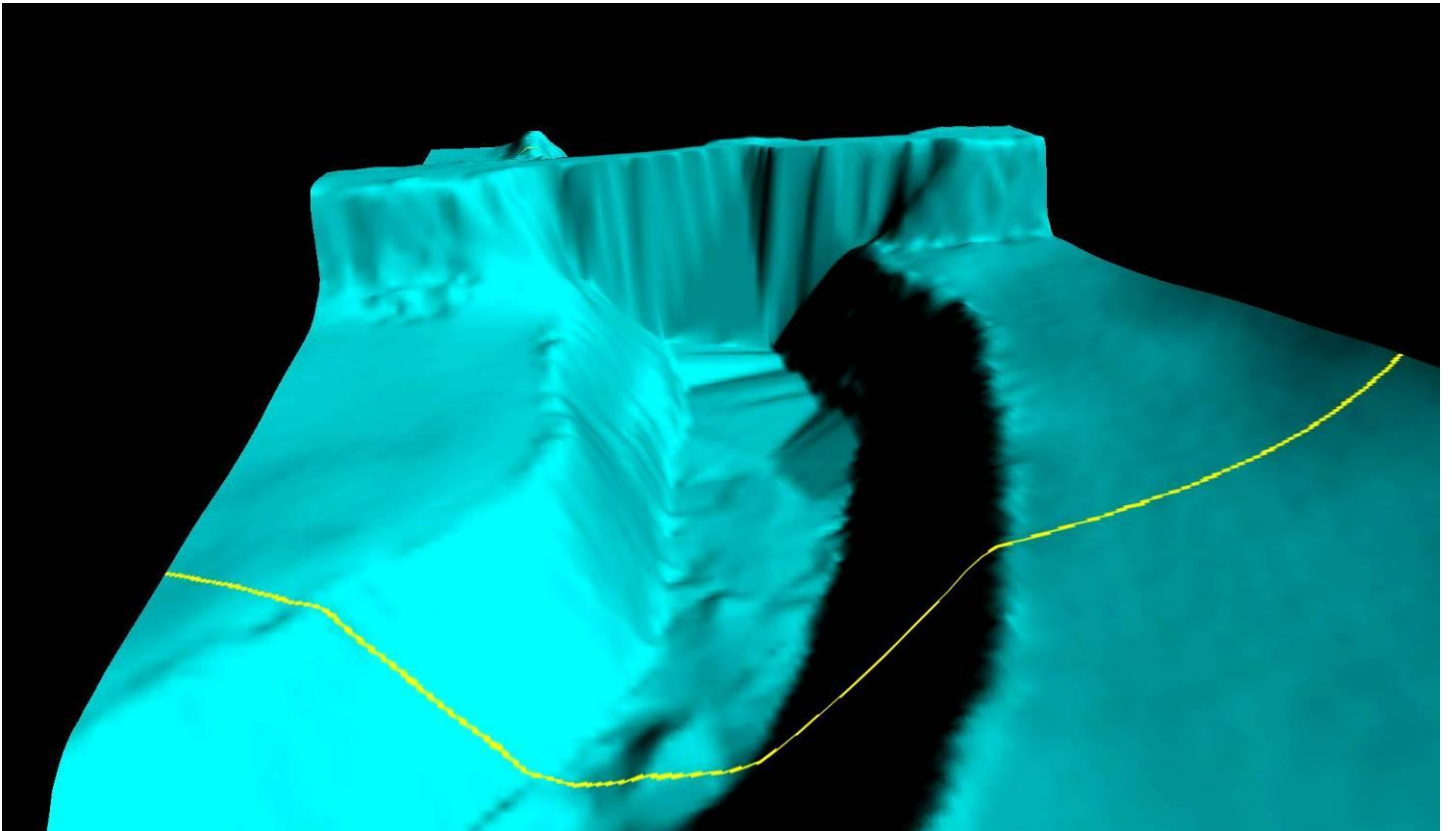
Iowa CNW bldgs not taken out



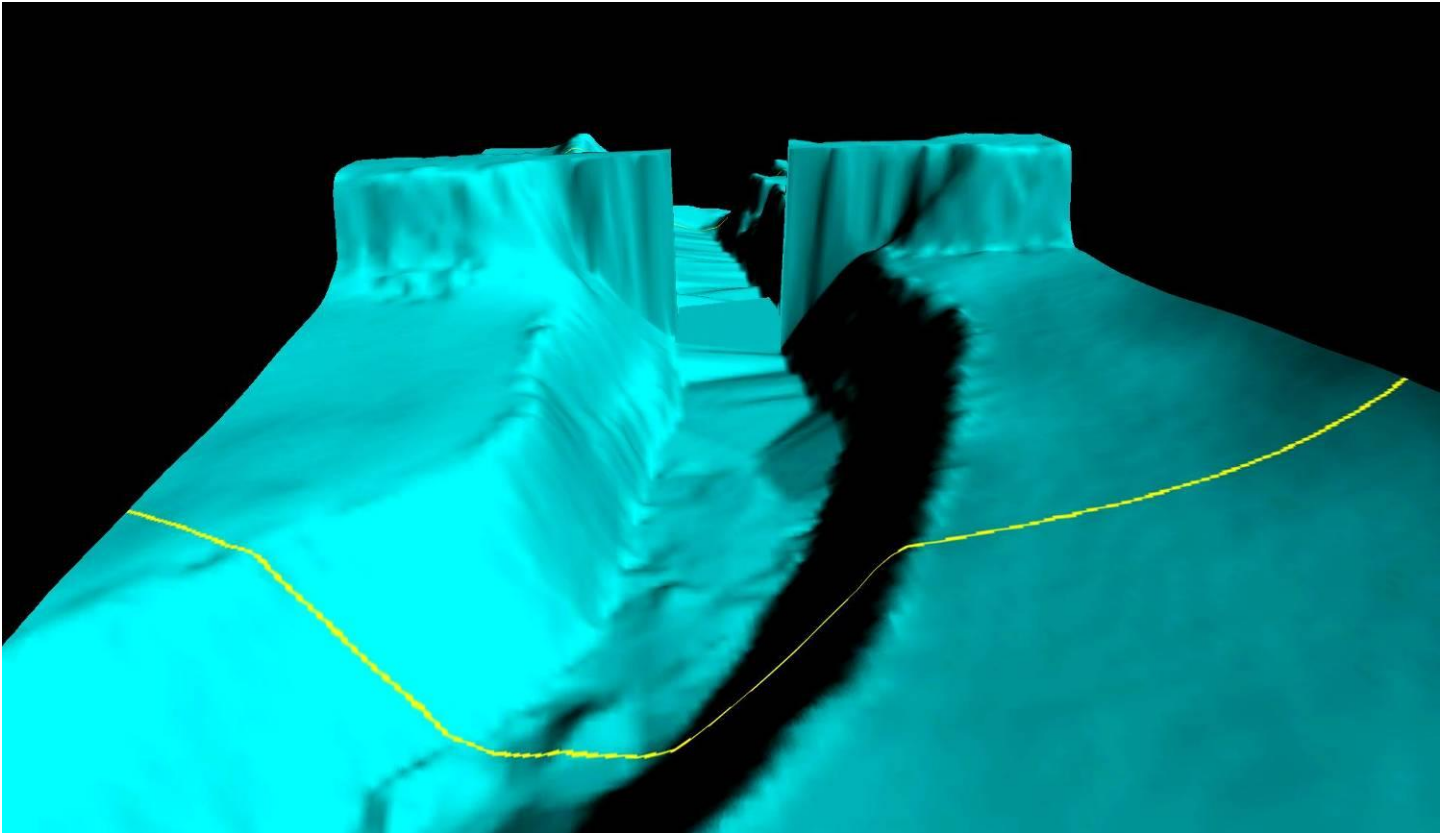
Iowa CNW bldgs not taken out (Fixed)



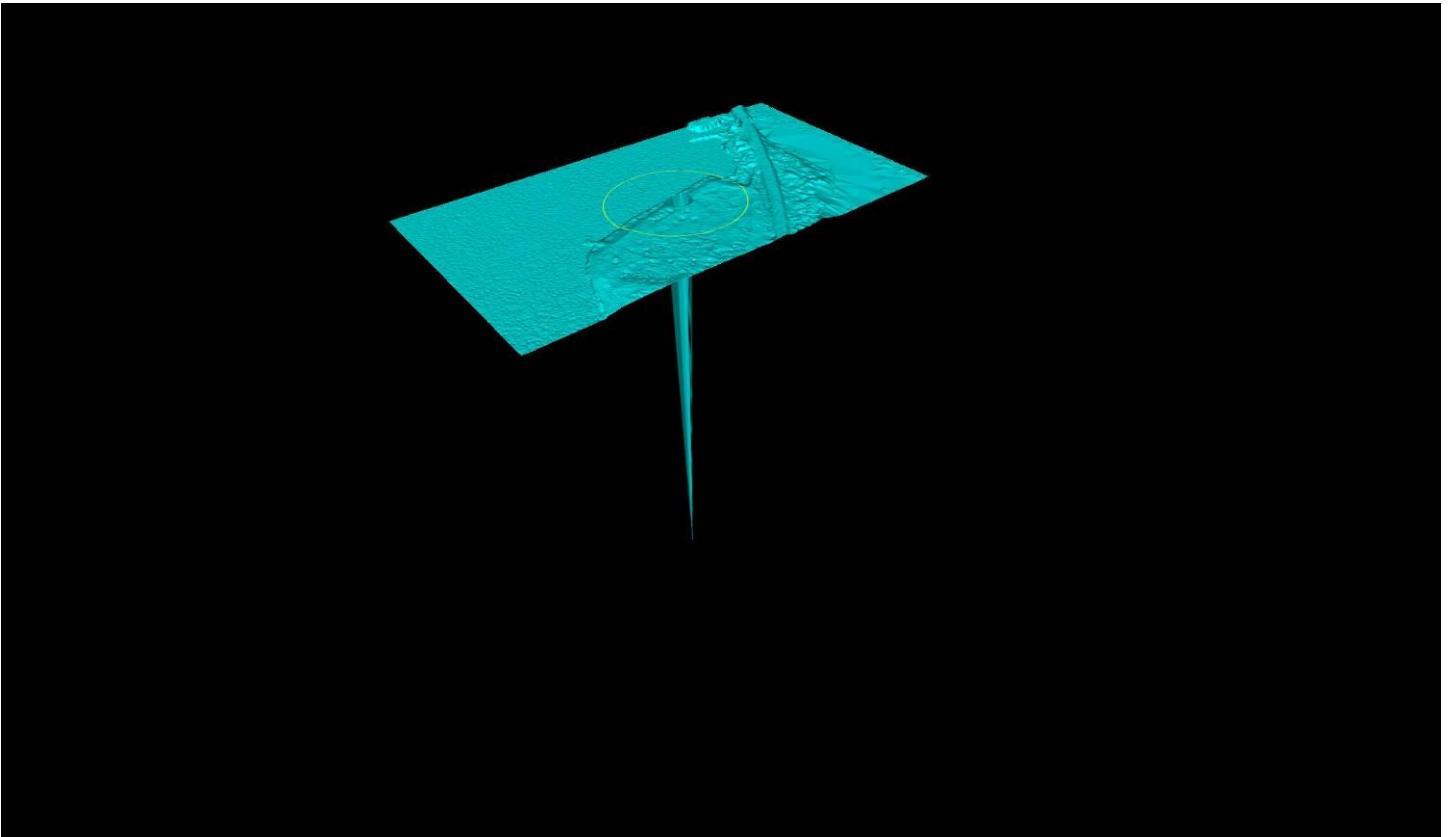
Iowa CNW bridges not taken out



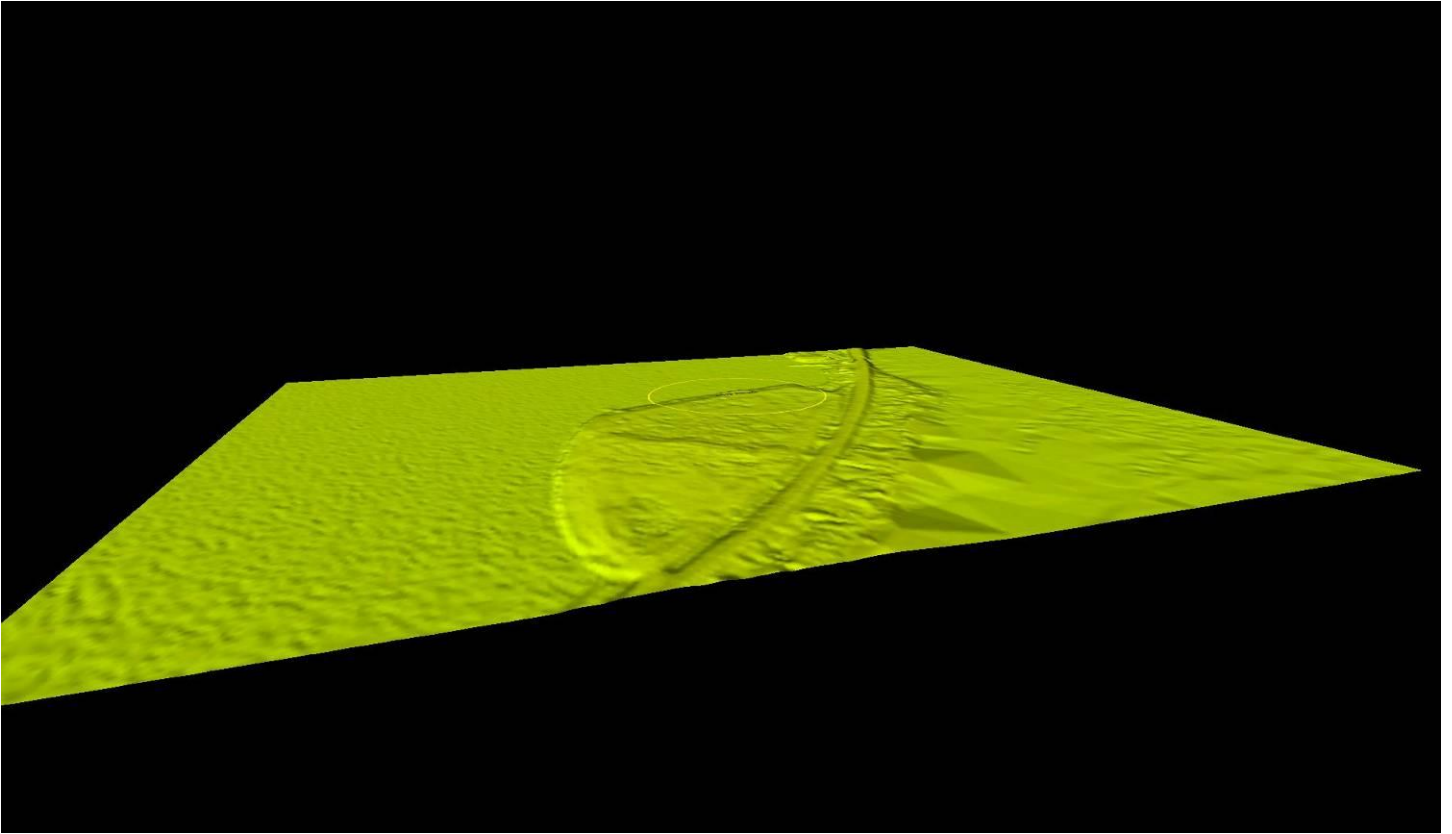
Iowa CNW bridges not taken out (Fixed)



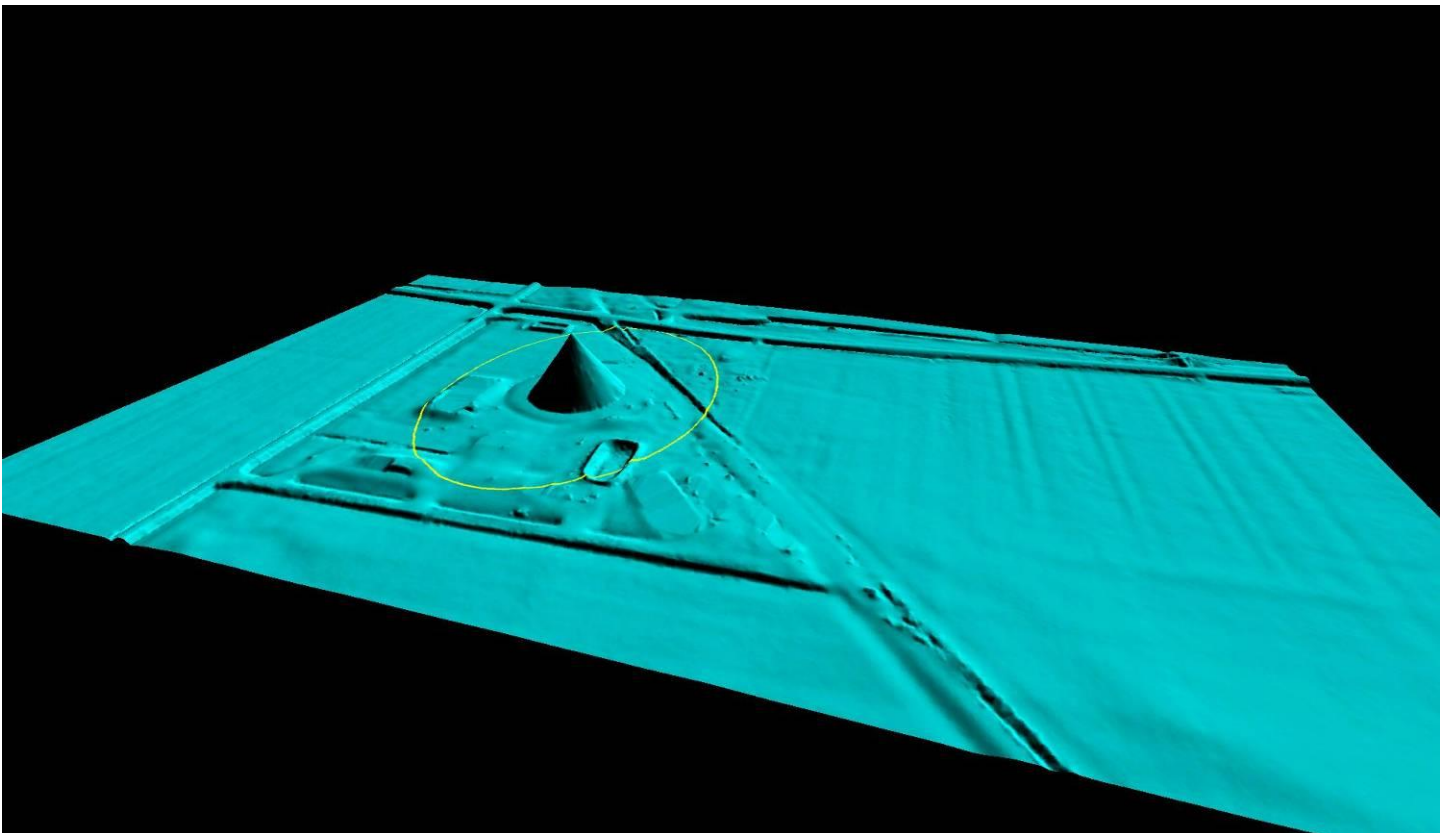
Iowa CNW spiking down



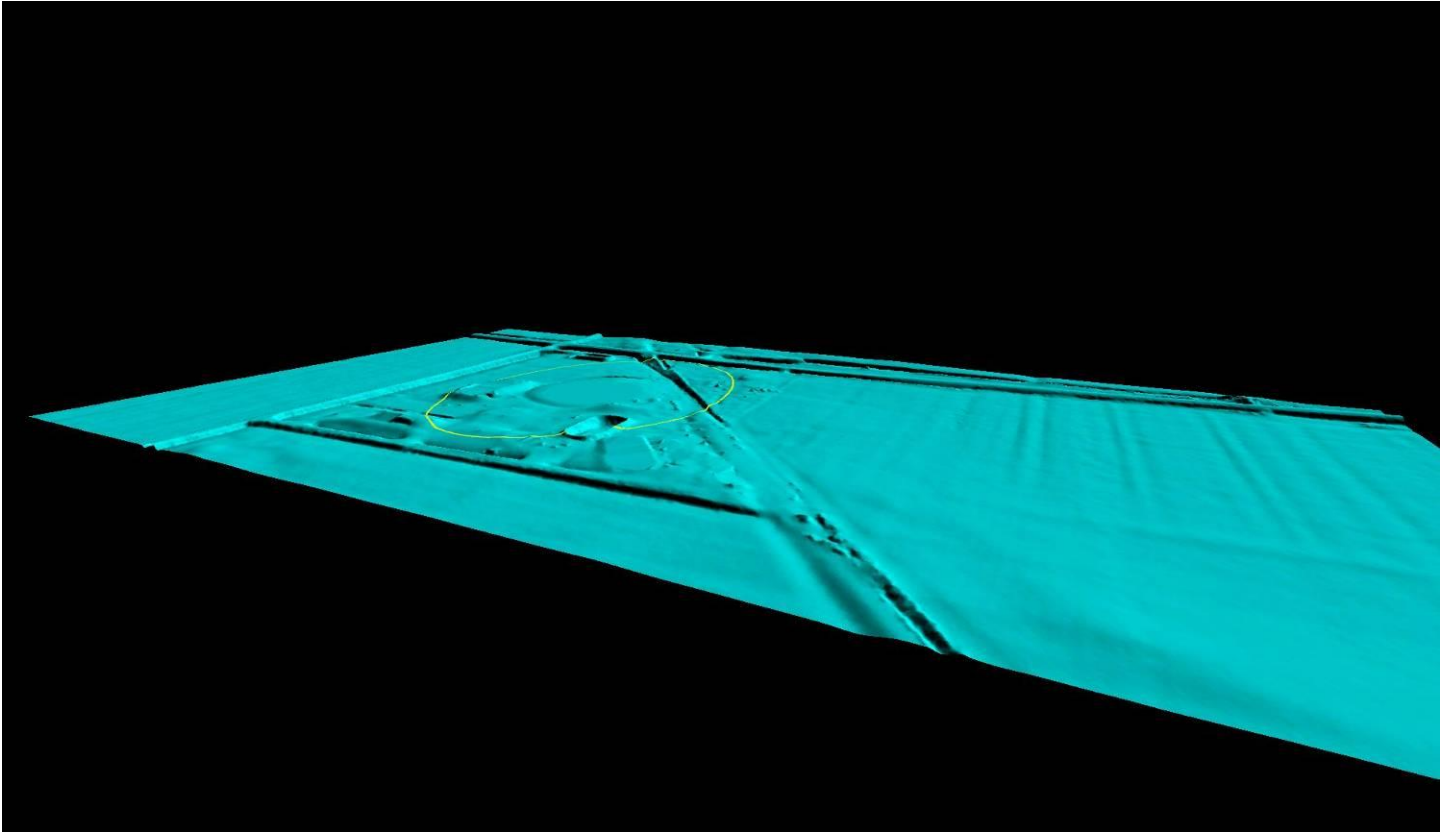
Iowa CNW spiking down (Fixed)



Iowa CNW level structure



Iowa CNW level structure (Fixed)



Iowa CNW road offset (not fixed)

