

# High Resolution Elevation QA Review Report

Project: Iowa CSW 01-16 Lidar 2010 Contract ID:

Liaison: Bob Lermen Partner(s): Contractor: Sanborn Map Co. Inc

Data Delivery Date: 02/10/2009, 05:00 Date Data Reviewed: 12/21/2009 - 01

Reviewer: Rusty Grout / Eric Jaramill Total Square Miles Reviewed: 4572.8 sq. mi

Elevation Type: LIDAR Format: xyz Grid Spacing: 1 meter Tile size: 1000 x 1000

Projection: UTM Zone: 15 Datum: NAD83 Units: Meters

Licensing: Public Domain Metadata: Project Level Acquisition Date: 04/07/2007 thru

## Materials Received:

Bare earth ASCII .xyz files  
Las point cloud .xyz files  
Metadata  
Shape files

Vertical Accuracy Test Performed: Yes Test Point Source: USGS RMSE: 0.208 meters

## Vertical Accuracy Test Notes:

A vertical check was performed on Iowa CSW 01-16 bare earth data. See the Iowa Statewide Lidar Vertical Accuracy Report sent with the final .img data.

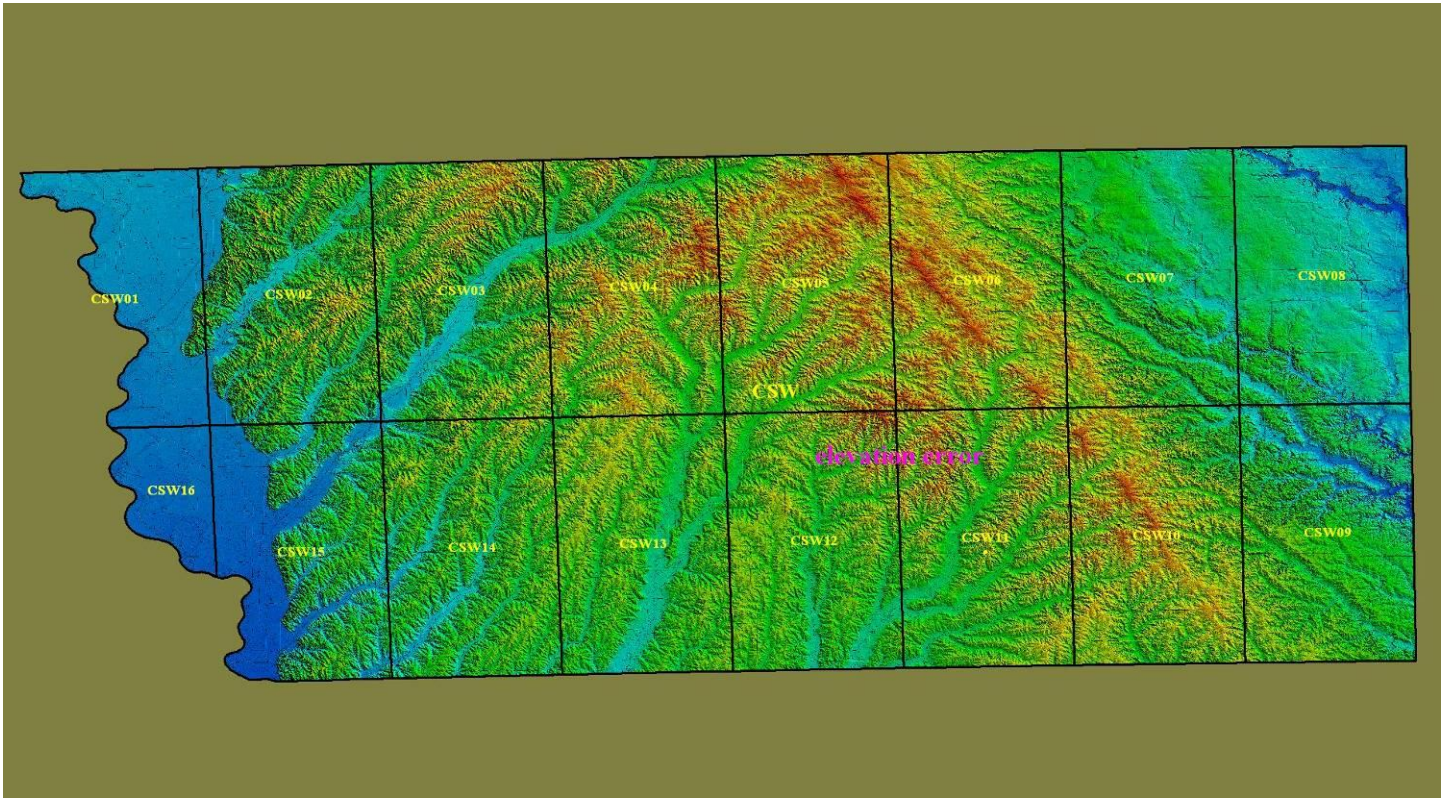
## QA Review Summary:

All of Iowa CSW 01-16 one meter Lidar data was reviewed. This data was brought into Global Mapper as .xyz point files. Las point files were created from the .xyz files then gridded to 1 meter data for QA/QC. Errors found and fixed in Global Mapper were 2 elevation errors, (errors found and not fixed throughout this project are road offsets see example below). This 1 meter data has been regrided 1 meter .img files. This data is accepted and will be sent to archive.

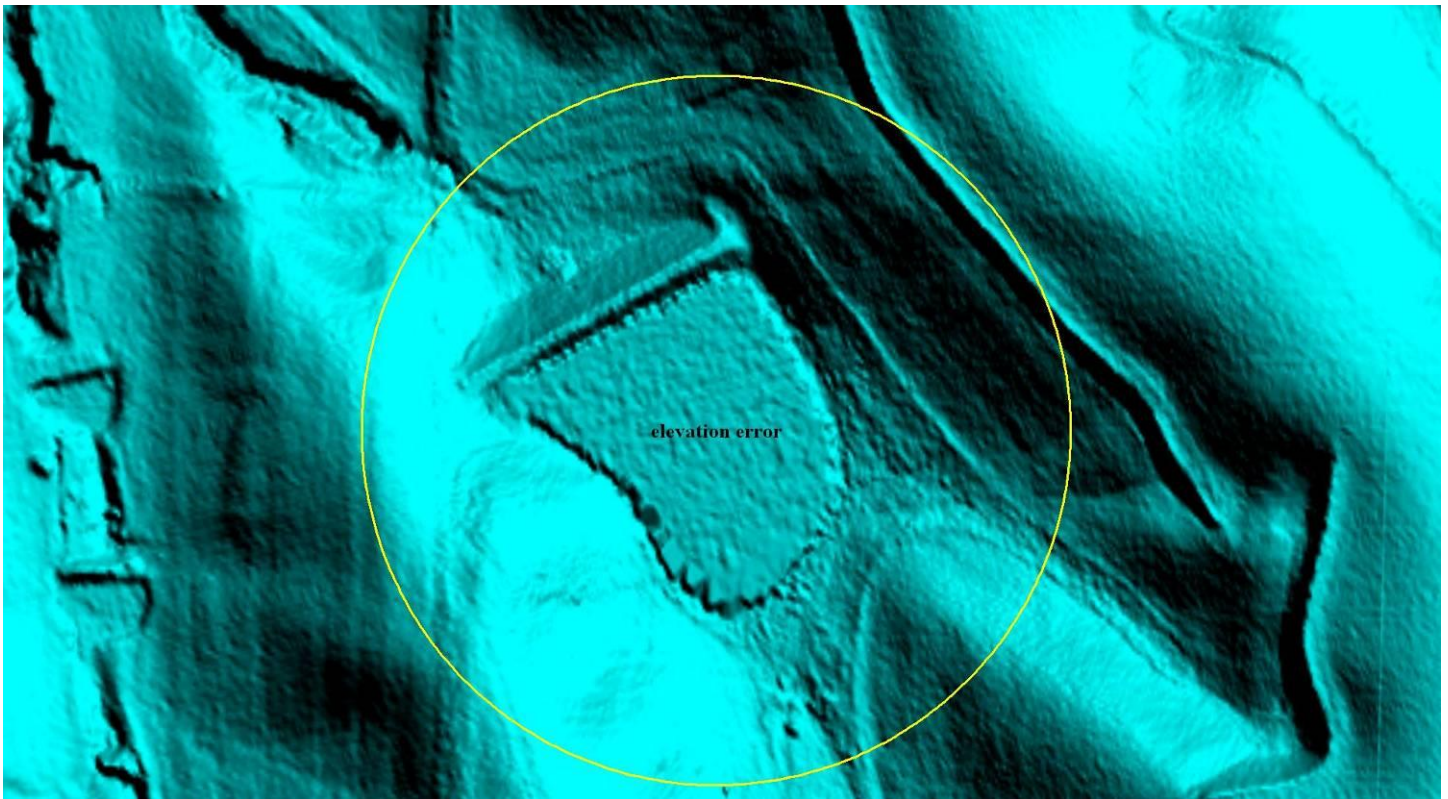
See error JPEG examples and documents attached below.

Conclusions: 1. 89% of artifacts removed  
2. 90% of vegetation removed  
3. 95% of buildings removed

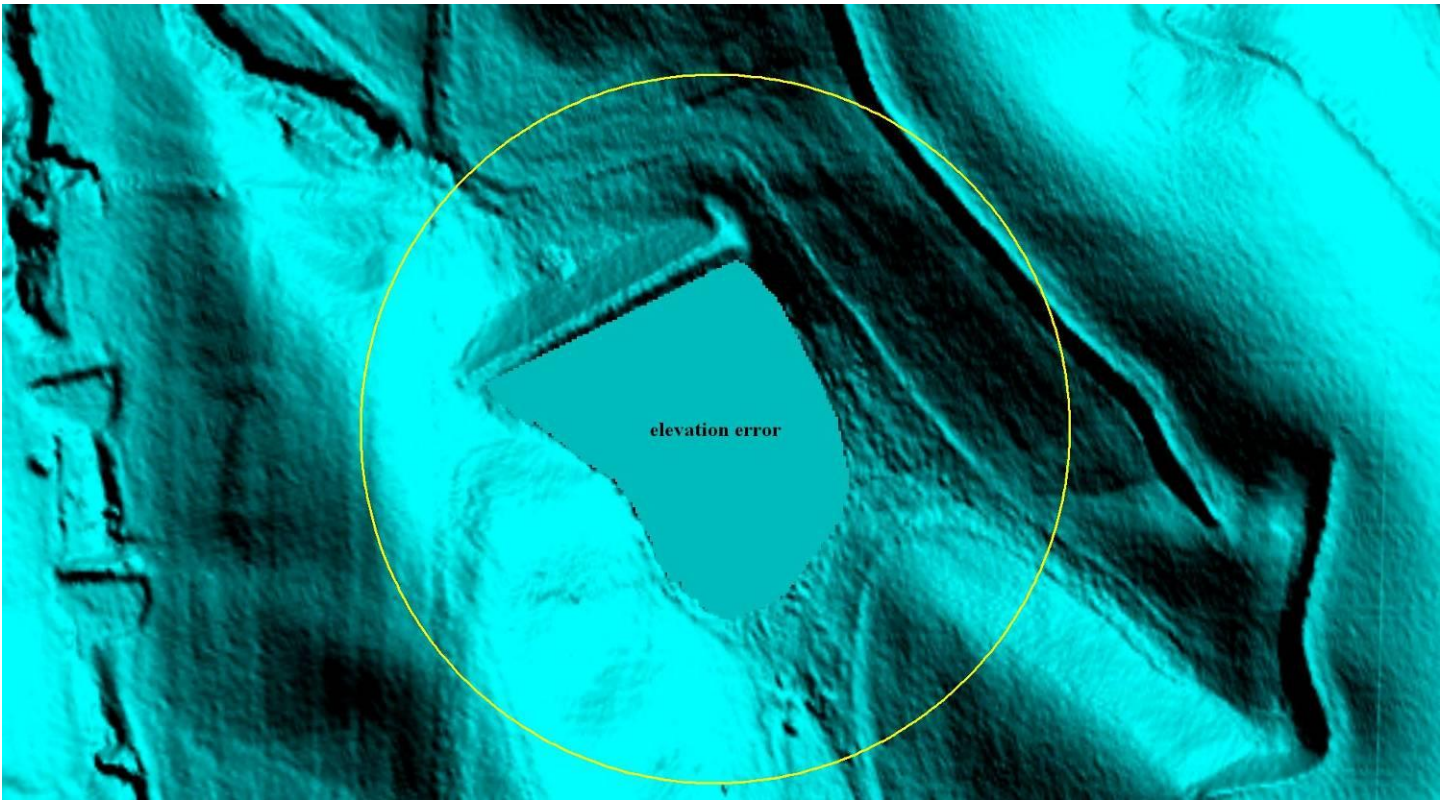
Iowa CSW 01-16



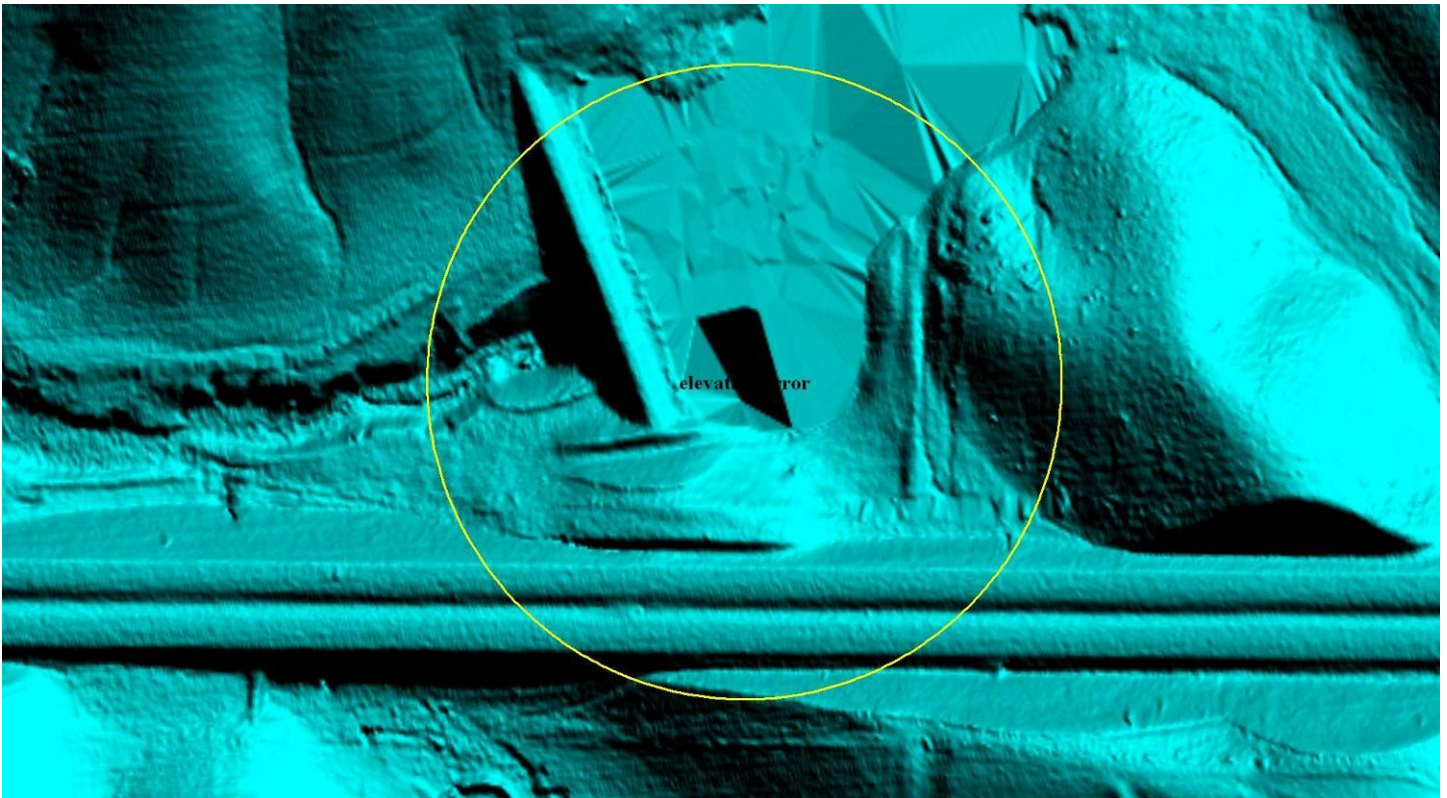
Iowa CSW 11 elevation error 1



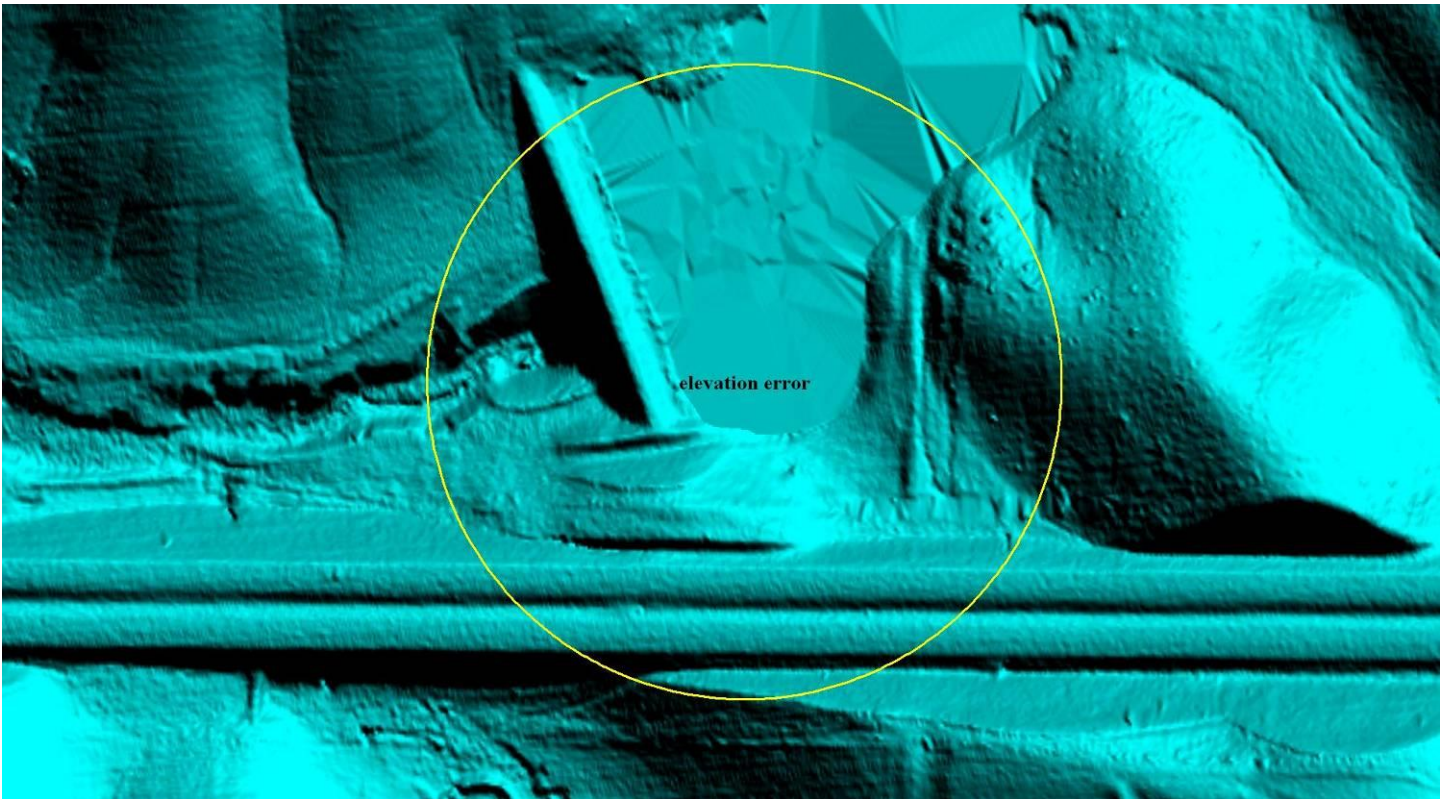
Iowa CSW 11 elevation error 1 (Fixed)



Iowa CSW 11 elevation error 2



**Iowa CSW 11 elevation error (Fixed)**



**Iowa CSW road offset (not fixed)**

