

High Resolution Elevation QA Review Report

Project: Iowa NC 01-15 Lidar 2010 Contract ID:

Liaison: Bob Lermen Partner(s): Contractor: Sanborn Map Co. Inc

Data Delivery Date: 02/10/2009, 01/14 Date Data Reviewed: 08/03/2010 - 08

Reviewer: Rusty Grout / Eric Jaramill Total Square Miles Reviewed: 4389.5 sq. mi

Elevation Type: LIDAR Format: xyz Grid Spacing: 1 meter Tile size: 1000 x 1000

Projection: UTM Zone: 15 Datum: NAD83 Units: Meters

Licensing: Public Domain Metadata: Project Level Acquisition Date: 04/07/2007 thru

Materials Received:

Bare earth ASCII .xyz files
Las point cloud .xyz files
Metadata
Shape files

Vertical Accuracy Test Performed: Yes Test Point Source: Contractor RMSE: 0.38 meters

Vertical Accuracy Test Notes:

A vertical check was performed on Iowa NC 01-15 bare earth data. See the Iowa Statewide Lidar Project Vertical Accuracy Report sent with the final .img data.

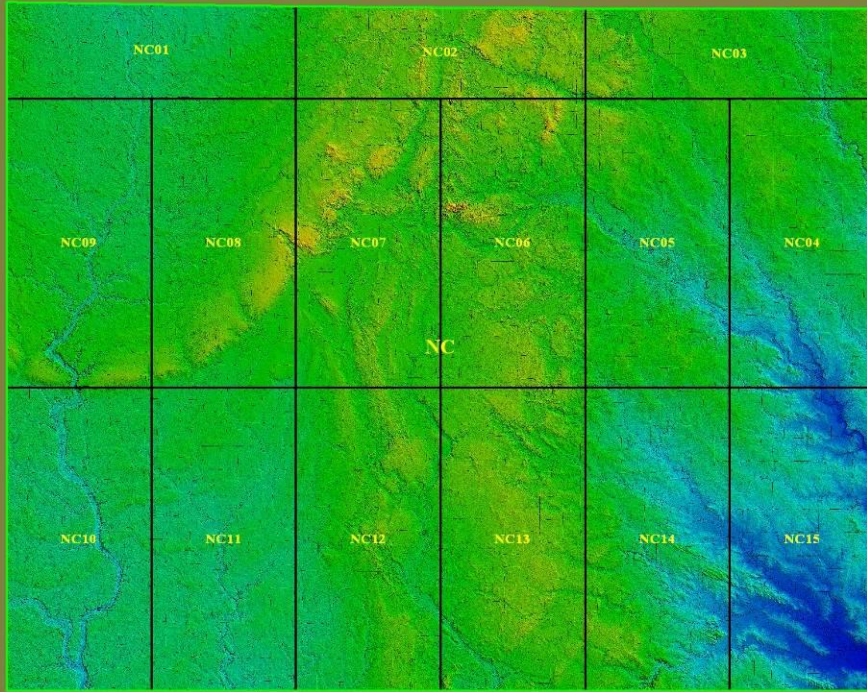
QA Review Summary:

All of Iowa NC 01-15 one meter Lidar data was reviewed. This data was brought into Global Mapper as .xyz point files. Las point files were created from the .xyz files then gridded to 1 meter data for QA/QC. Errors found throughout this project and fixed in Global Mapper are bridges not taken out, buildings and structures not taken out, spiking and missing data, (errors found throughout this project and not fixed are road offsets , see example below) . This 1 meter data has been regridded to 1 meter .img files. This data is accepted and will be sent to archive.

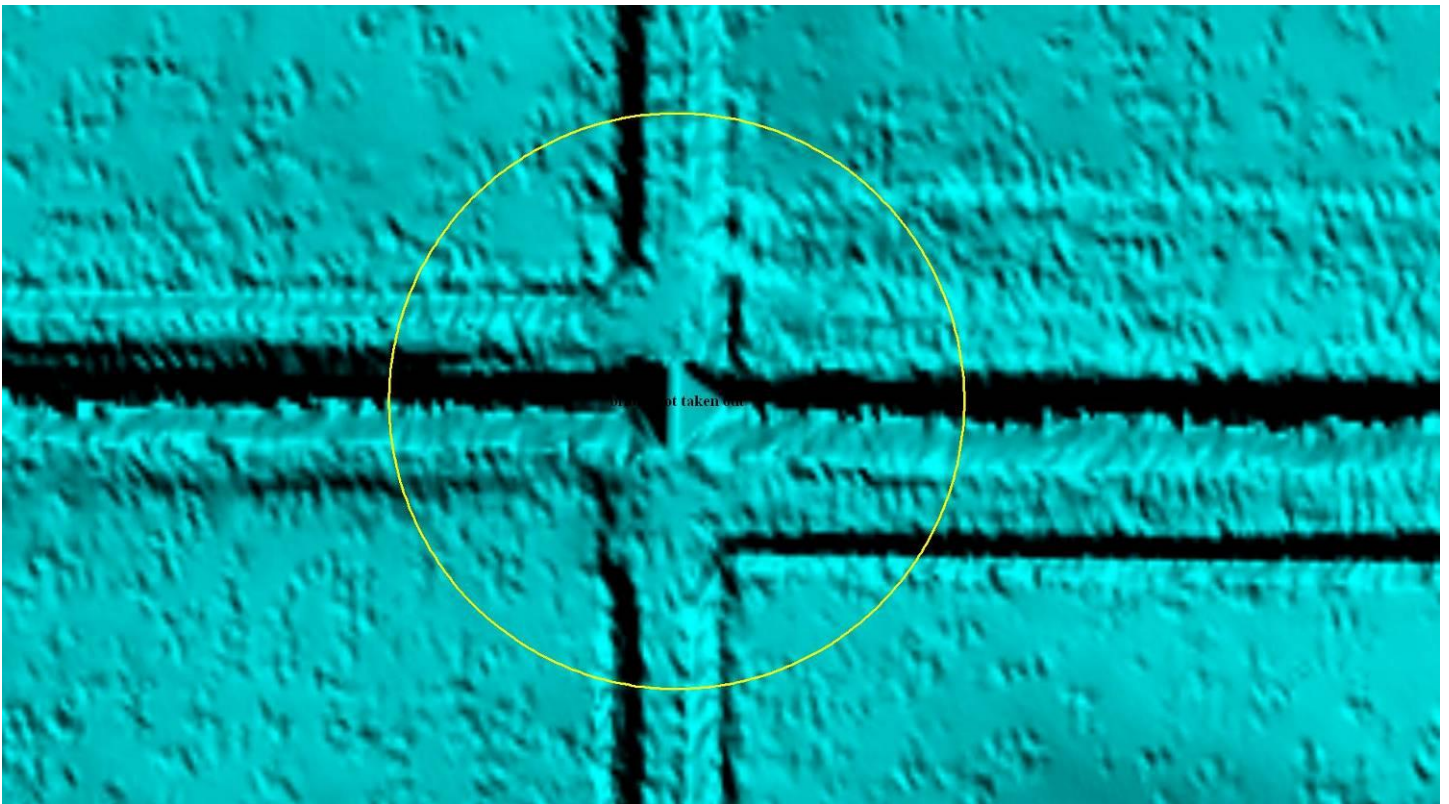
See error JPEG examples and documents attached below.

Conclusions: 1. 89% of artifacts removed
2. 90% of vegetation removed
3. 95% of buildings removed

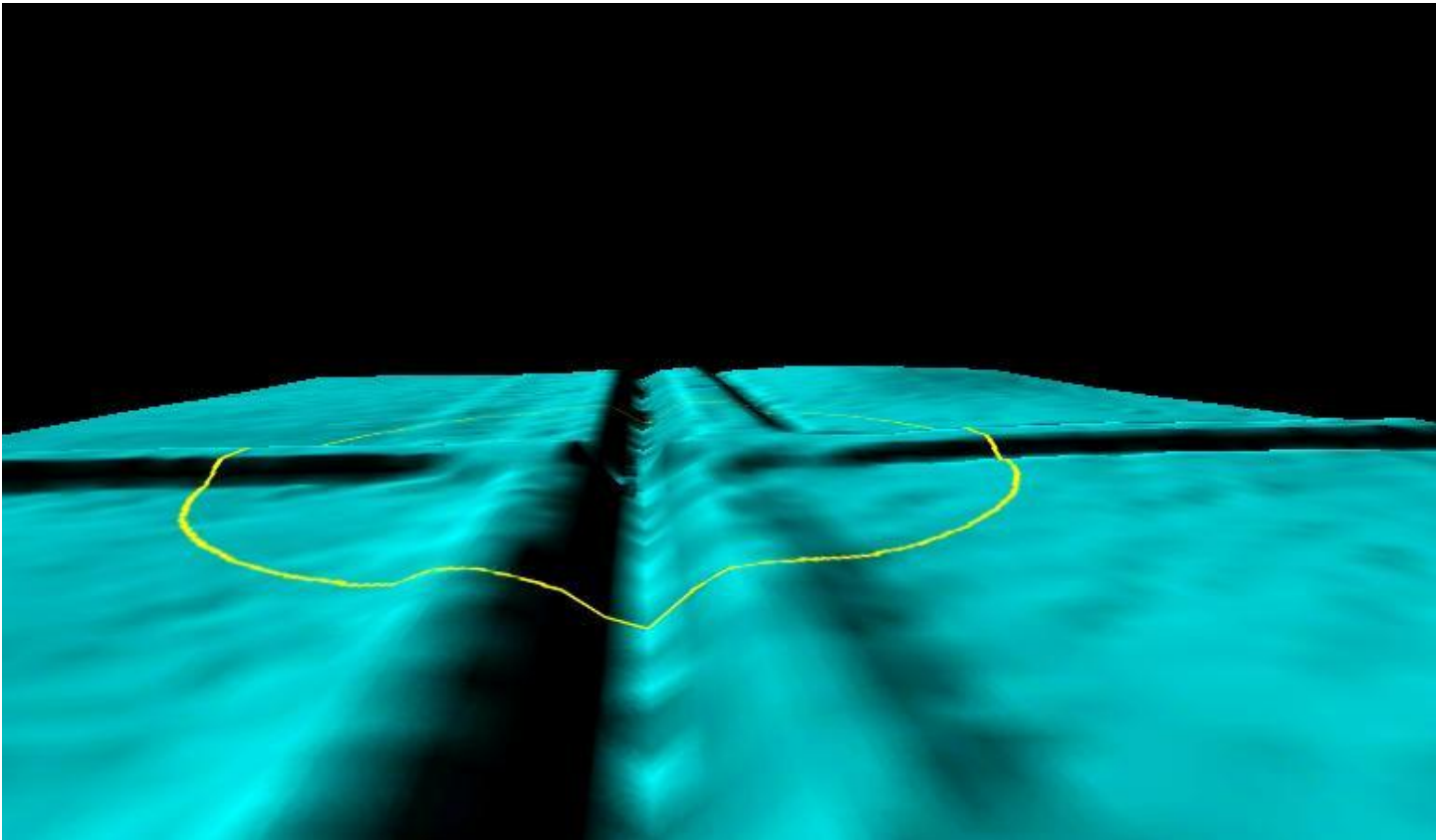
Iowa NC 01-15



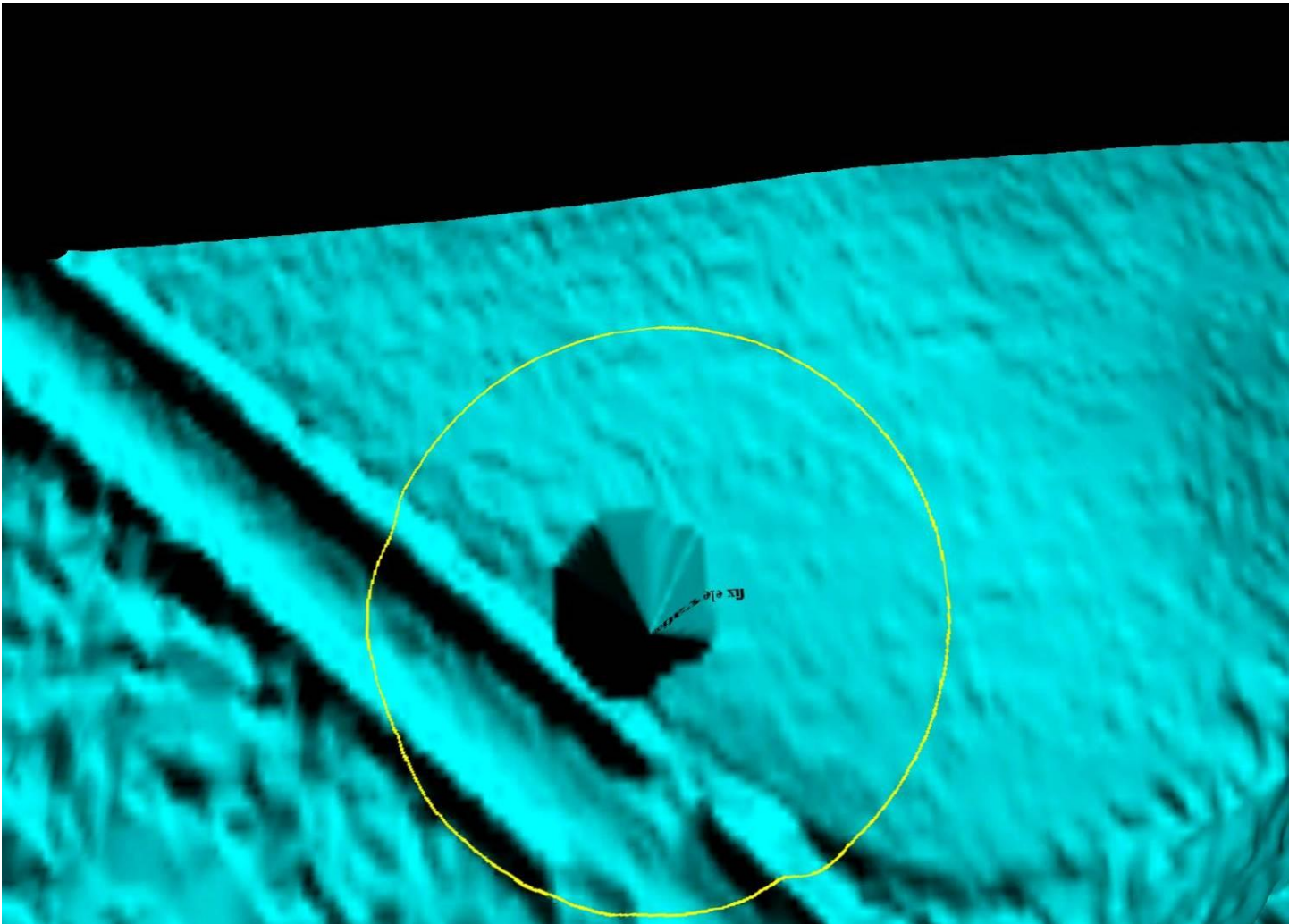
Iowa NC bridge not taken out



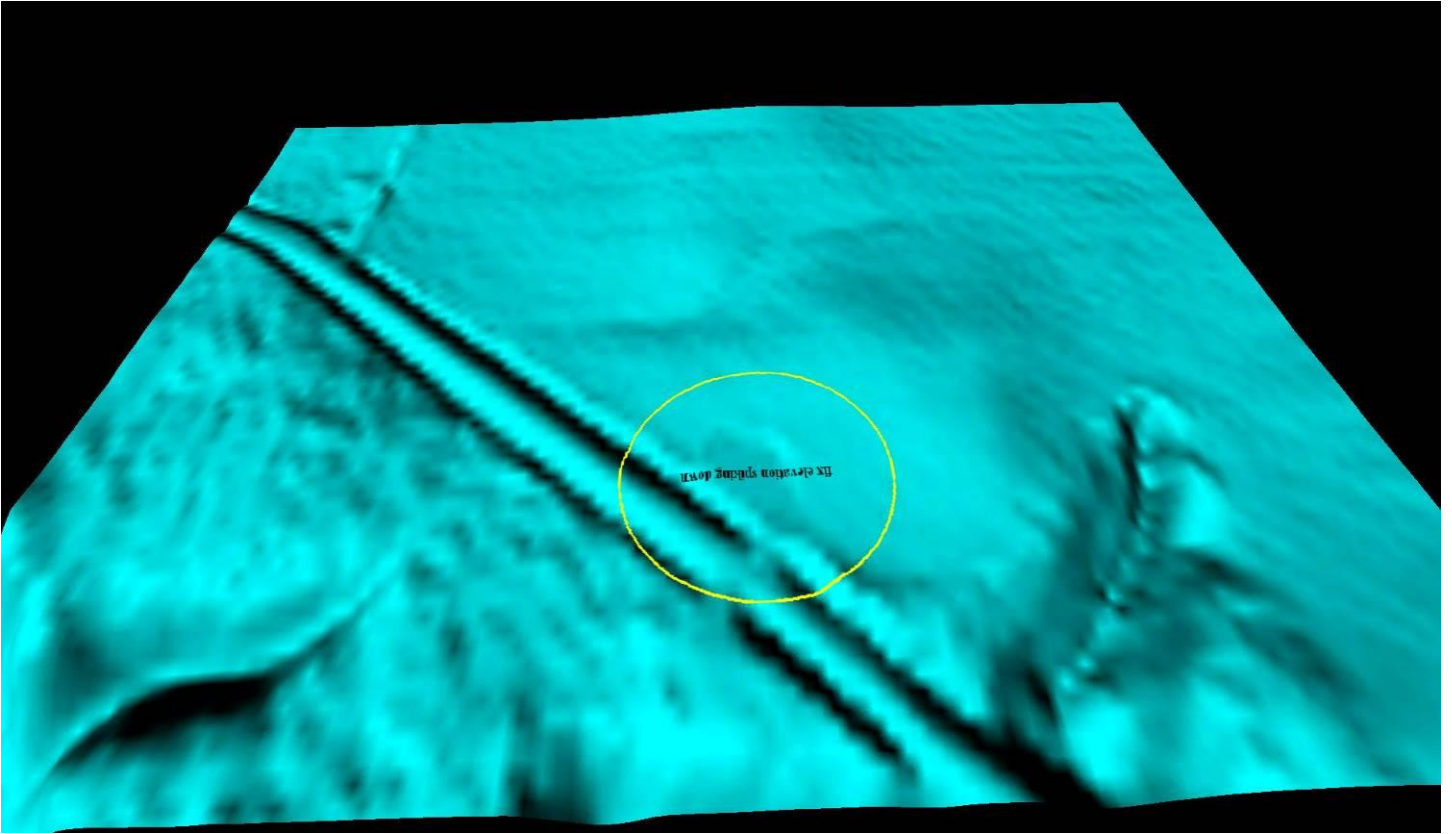
Iowa NC bridge not taken out (Fixed)



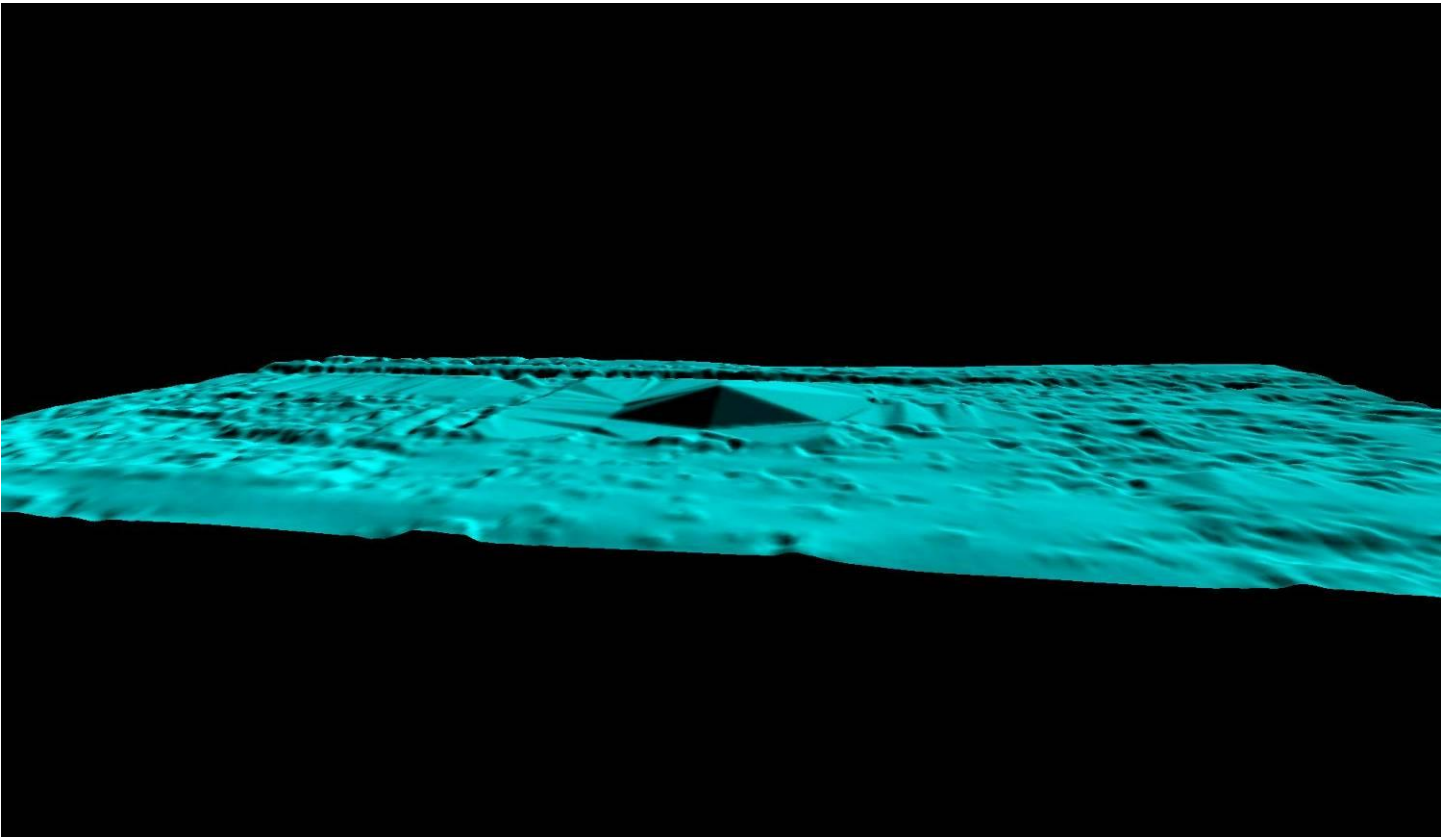
Iowa NC elevation error



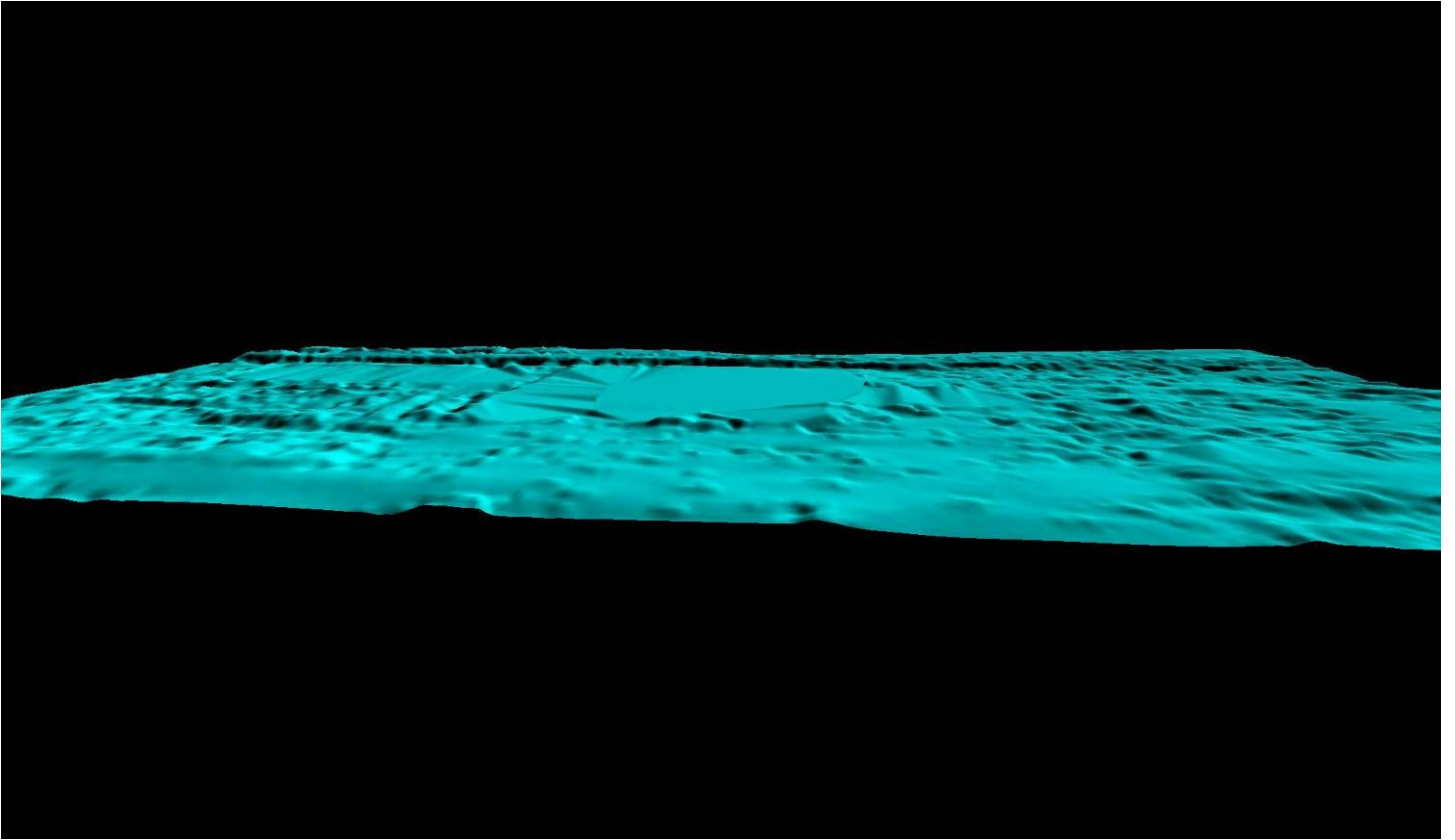
Iowa NC elevation error (Fixed)



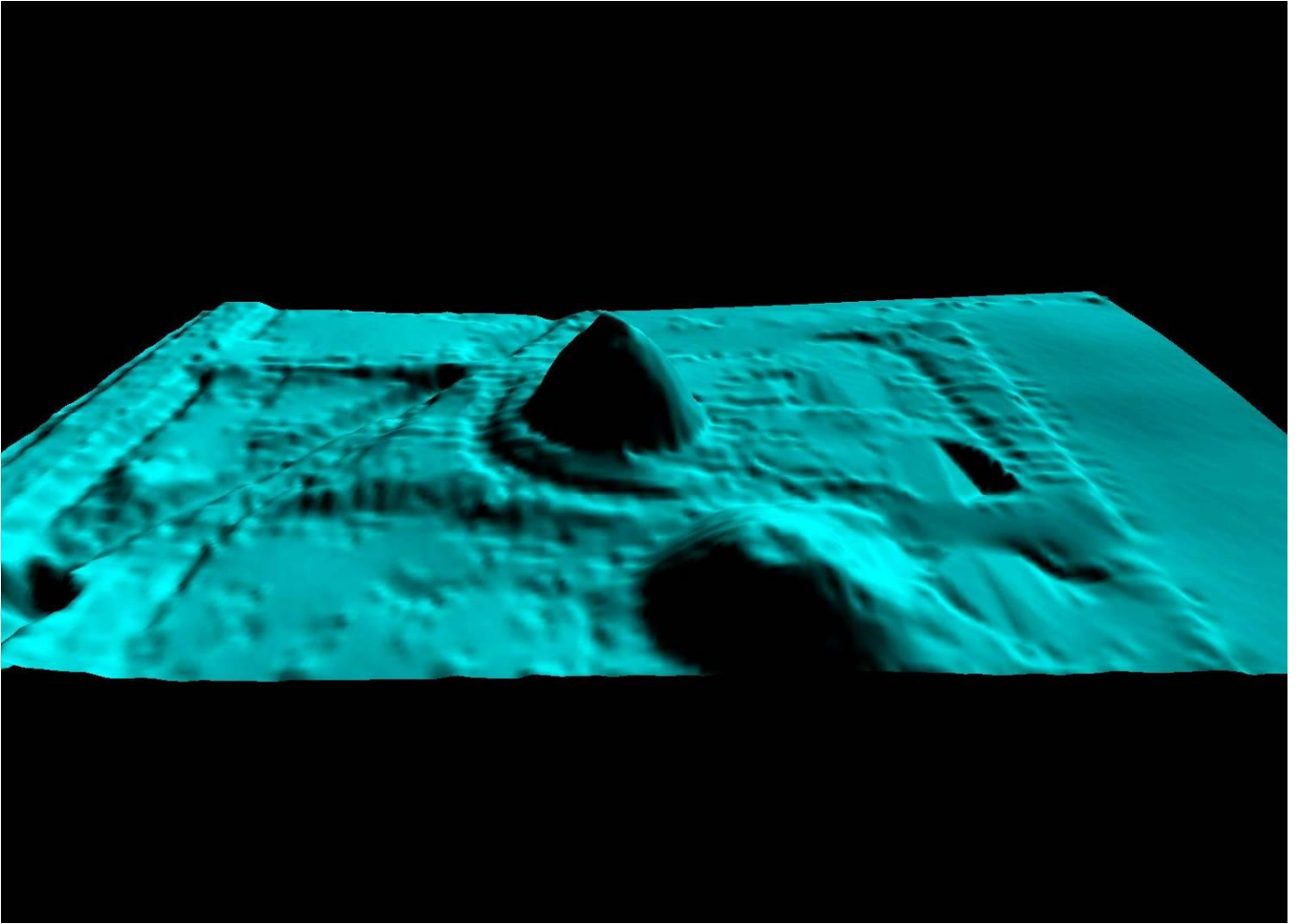
Iowa NC level bldg



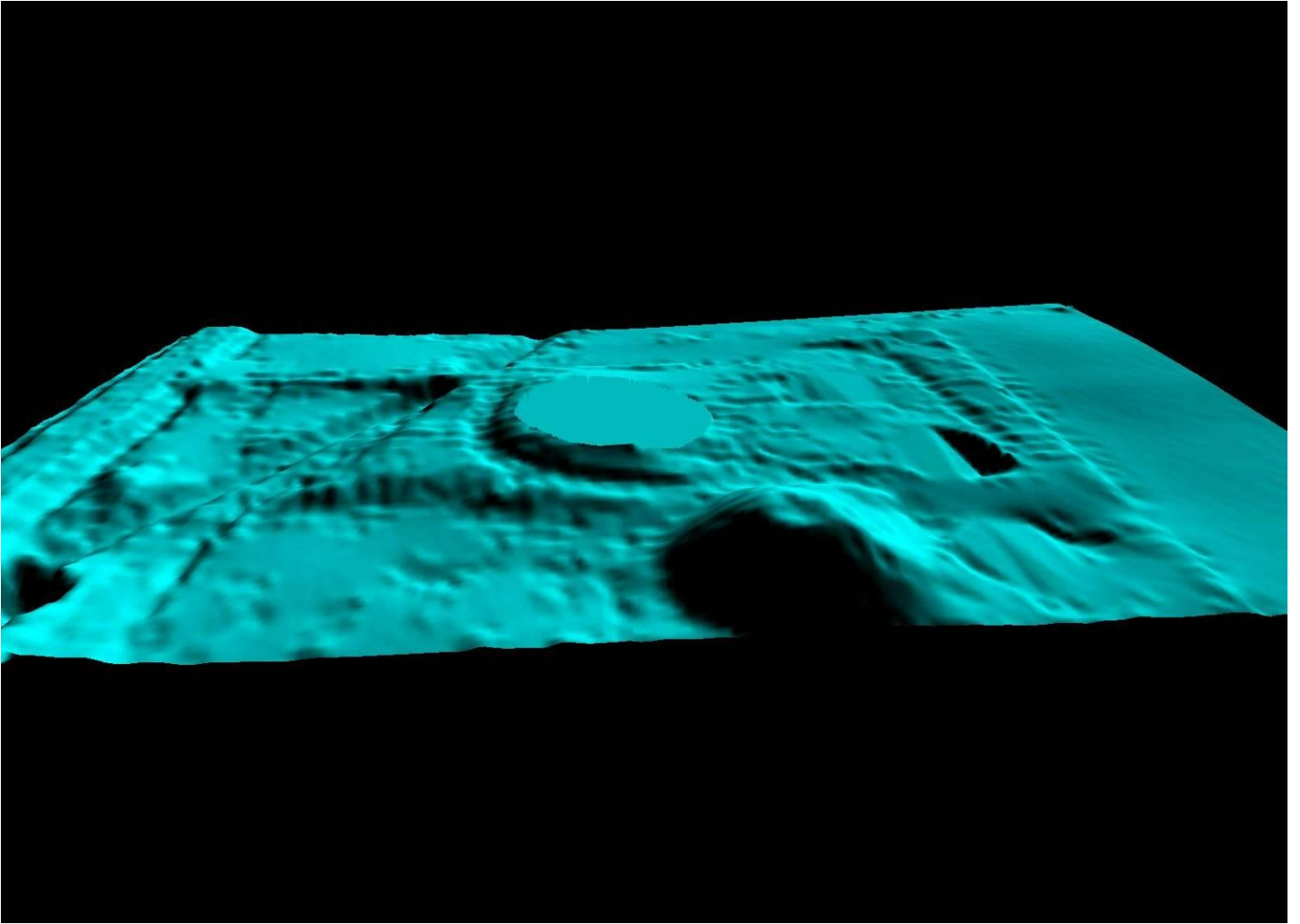
Iowa NC level bldg (Fixed)



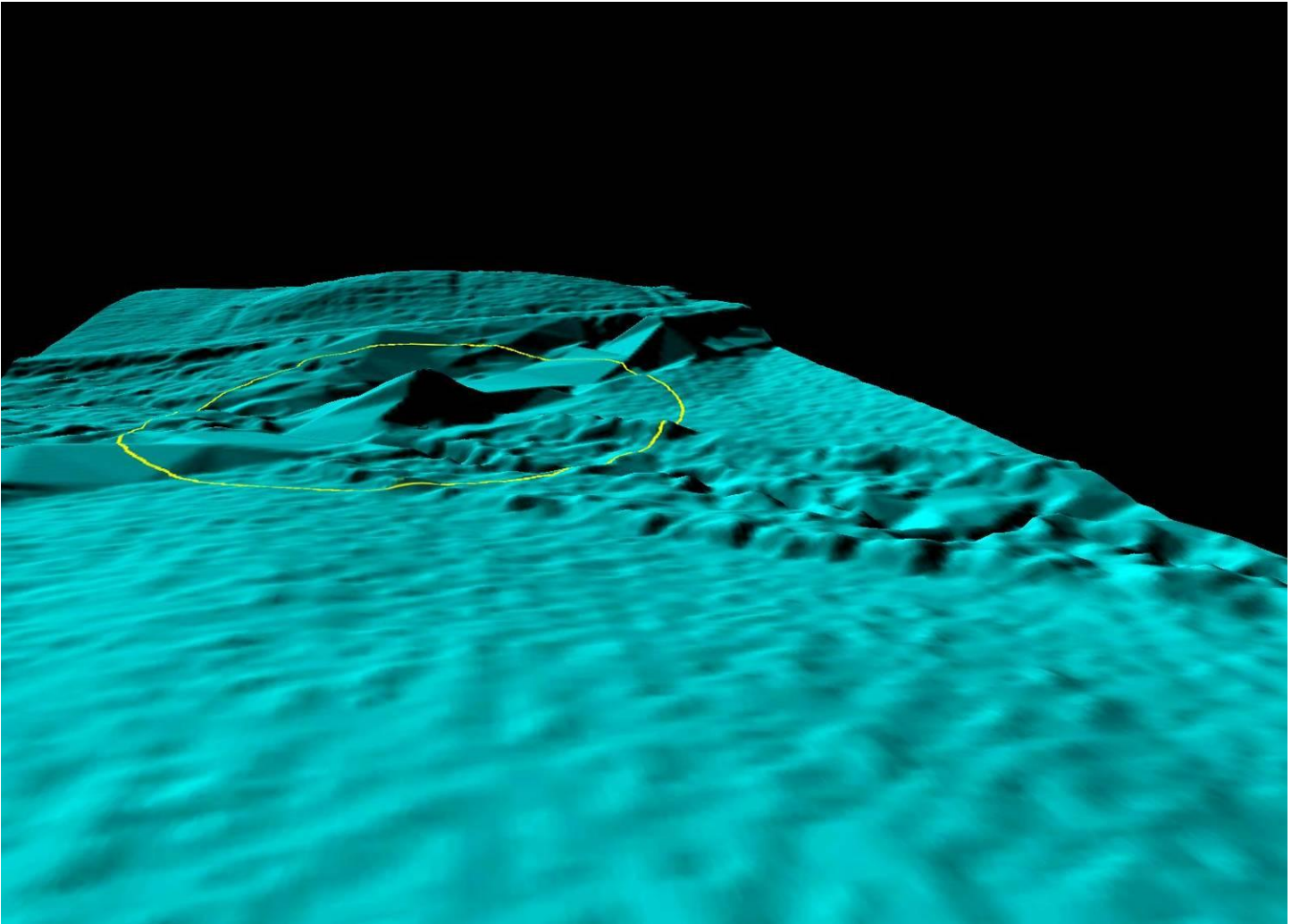
Iowa NC level structure



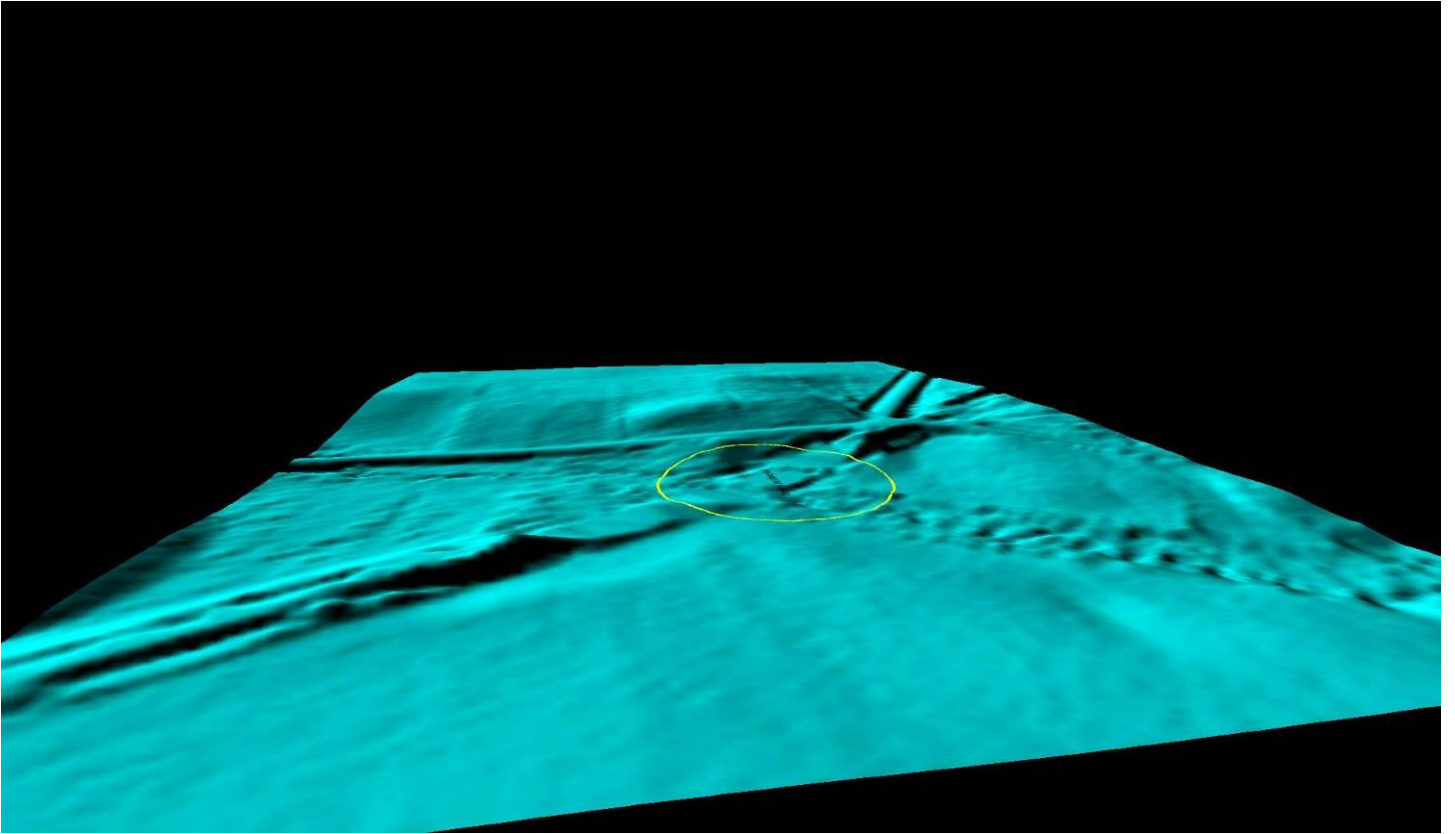
Iowa NC level structure (Fixed)



Iowa NC trees not leveled



Iowa NC trees not leveled (Fixed)



Iowa NC road offset (not fixed)

