

High Resolution Elevation QA Review Report

Project: Iowa NW 01-18 Lidar 2010 Contract ID:

Liaison: Bob Lermen Partner(s): Contractor: Sanborn Map Co. Inc

Data Delivery Date: 02/10/2009, 01/14 Date Data Reviewed: 08/04/2010 - 08

Reviewer: Rusty Grout / Eric Jaramill Total Square Miles Reviewed: 5658.5 sq. mi

Elevation Type: LIDAR Format: xyz Grid Spacing: 1 meter Tile size: 1000 x 1000

Projection: UTM Zone: 15 Datum: NAD83 Units: Meters

Licensing: Public Domain Metadata: Project Level Acquisition Date: 04/07/2007 thru

Materials Received:

Bare earth ASCII .xyz files
Las point cloud .xyz files
Metadata
Shape files

Vertical Accuracy Test Performed: Yes Test Point Source: USGS RMSE: 0.396 meters

Vertical Accuracy Test Notes:

A vertical check was performed on Iowa NW 01-18 bare earth data. See the Iowa Statewide Lidar Project Vertical Accuracy Report sent with the final .img data.

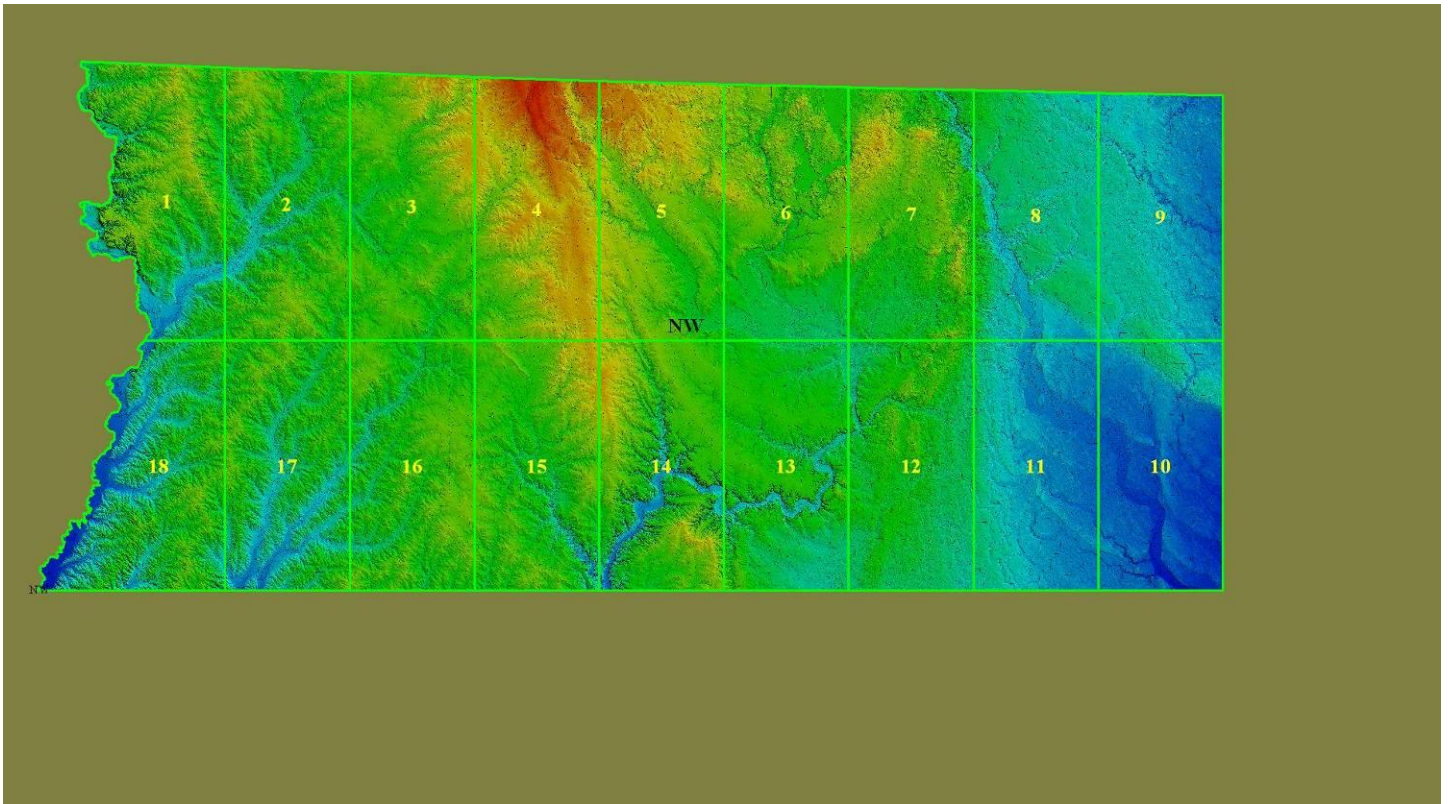
QA Review Summary:

All of Iowa NW 01-18 one meter Lidar data was reviewed. This data was brought into Global Mapper as .xyz point files. Las point files were created from the .xyz files then gridded to 1 meter data for QA/QC. Errors found throughout this project and fixed in Global Mapper are areas, bridges, bldgs and structures not taken out, trees not leveled, (errors found on this project and fixed by the contractor are spiking and elevation errors , see examples below) .

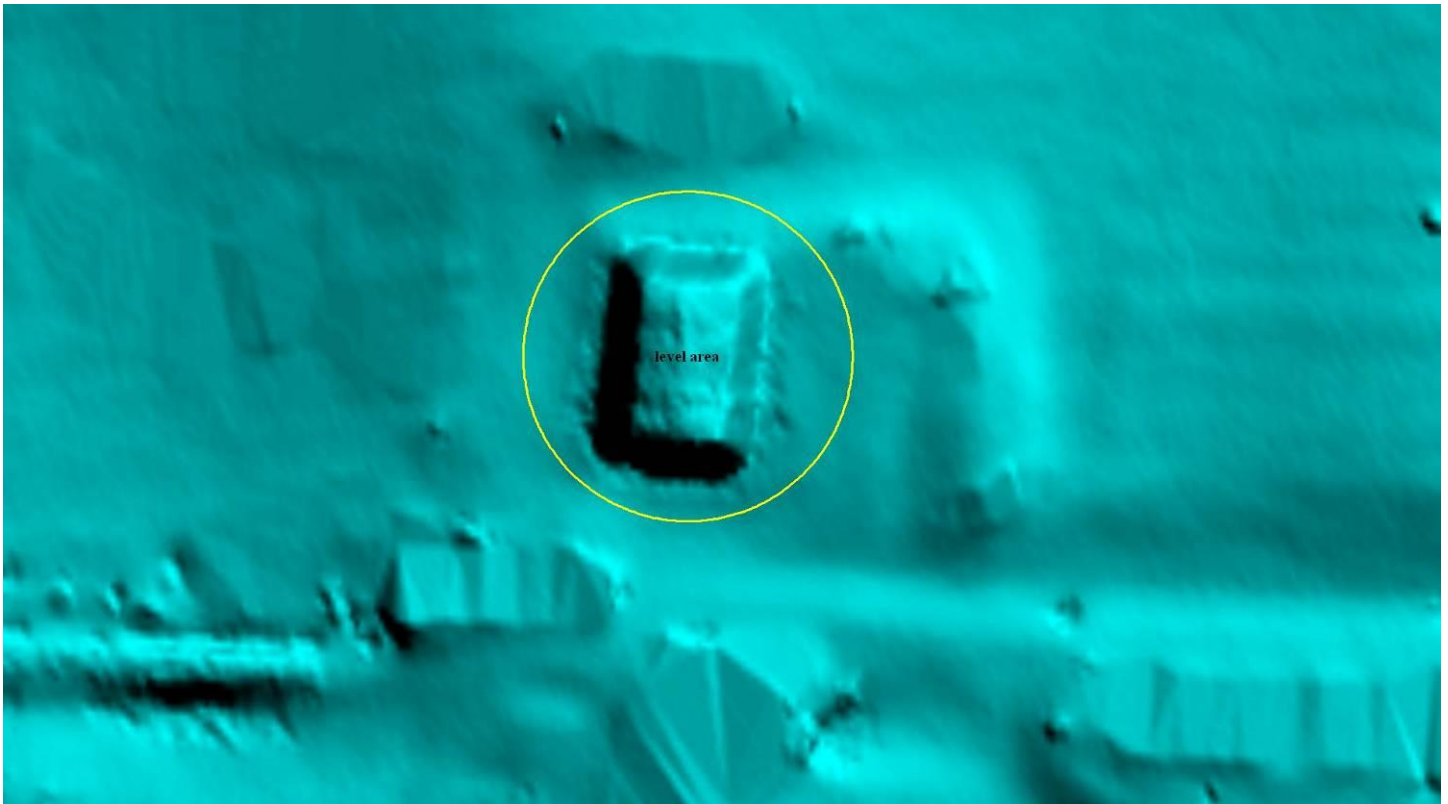
See error JPEG examples and documents attached below.

Conclusions: 1. 89% of artifacts removed
2. 90% of vegetation removed
3. 95% of buildings removed

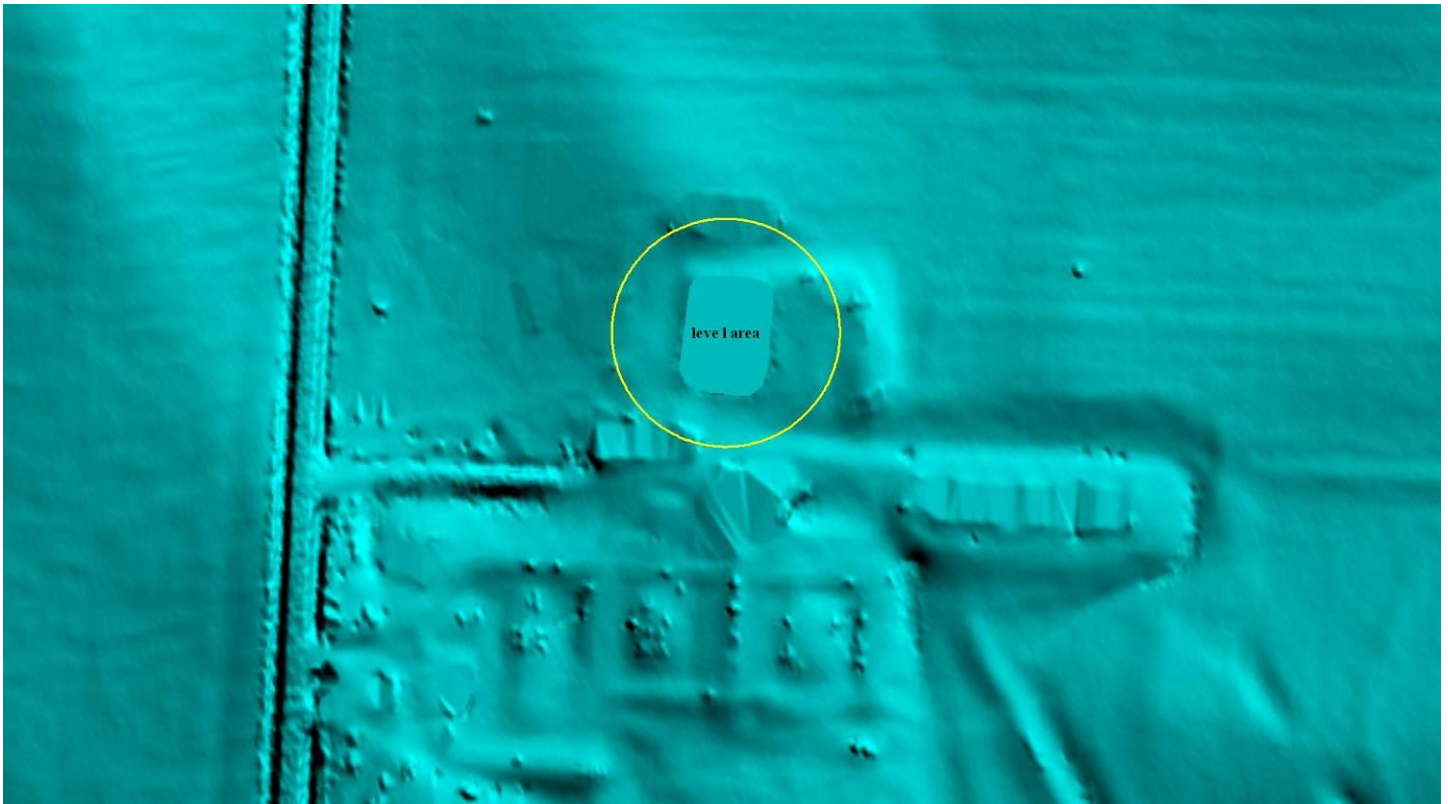
Iowa NW 01-18



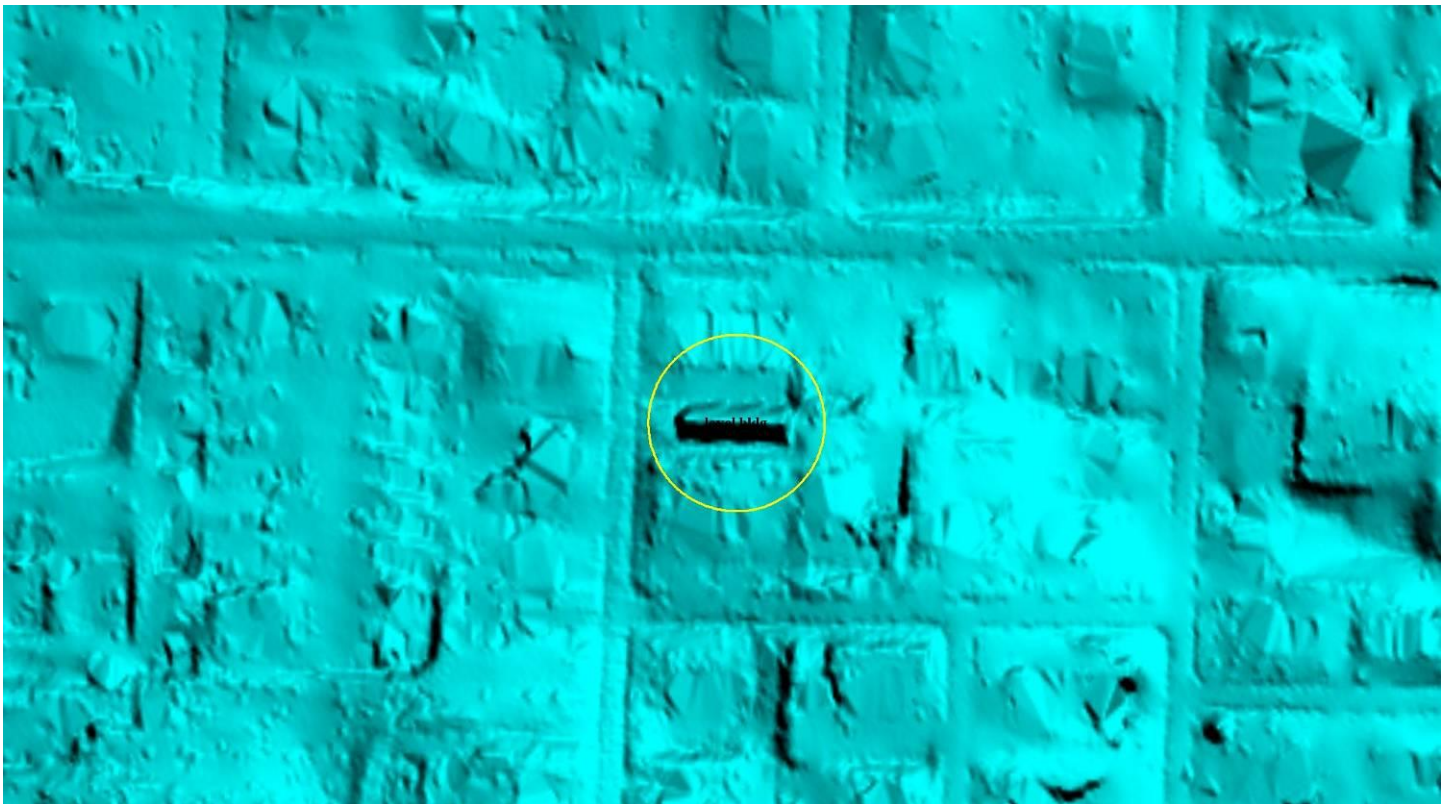
Iowa NW level area 1



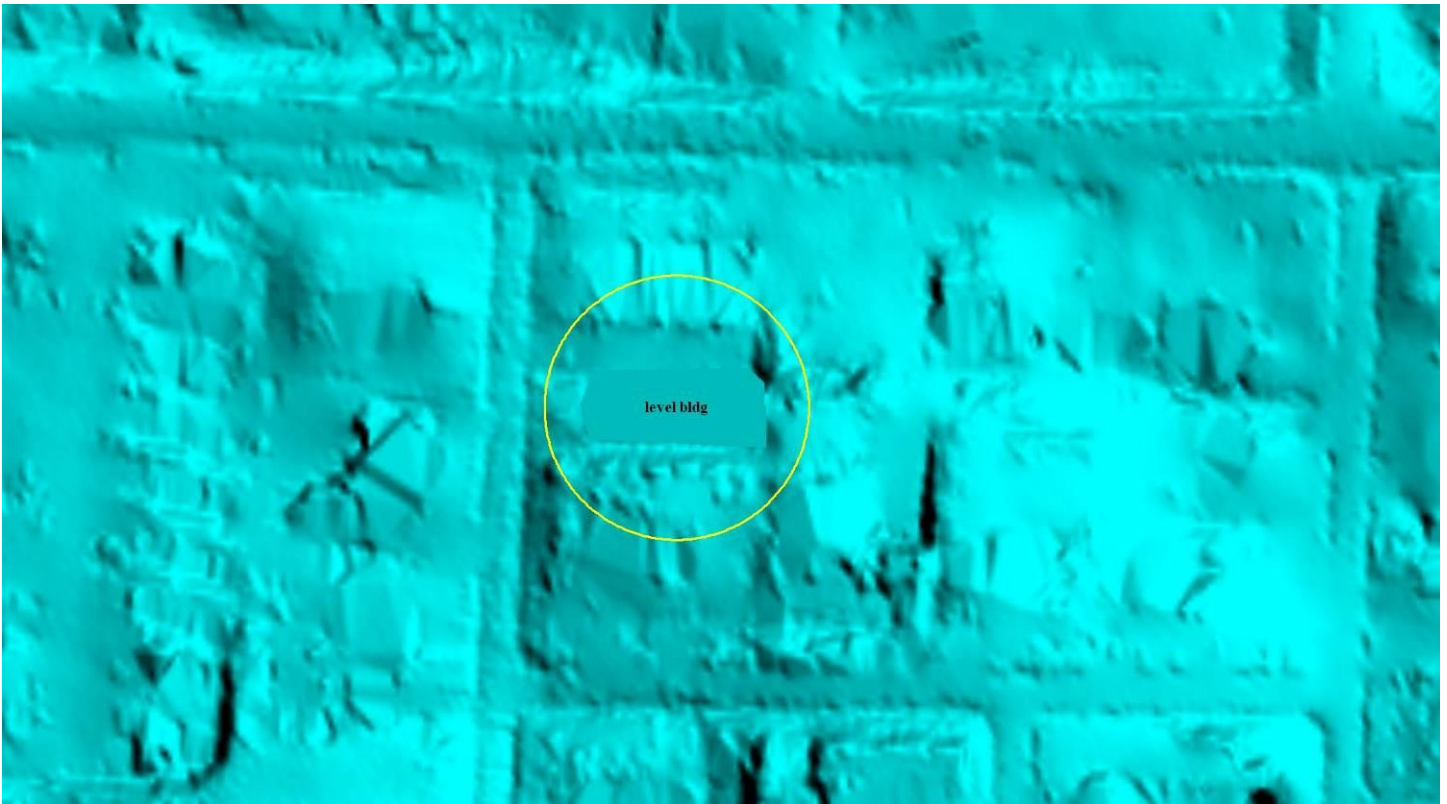
Iowa NW level area 1 (Fixed)



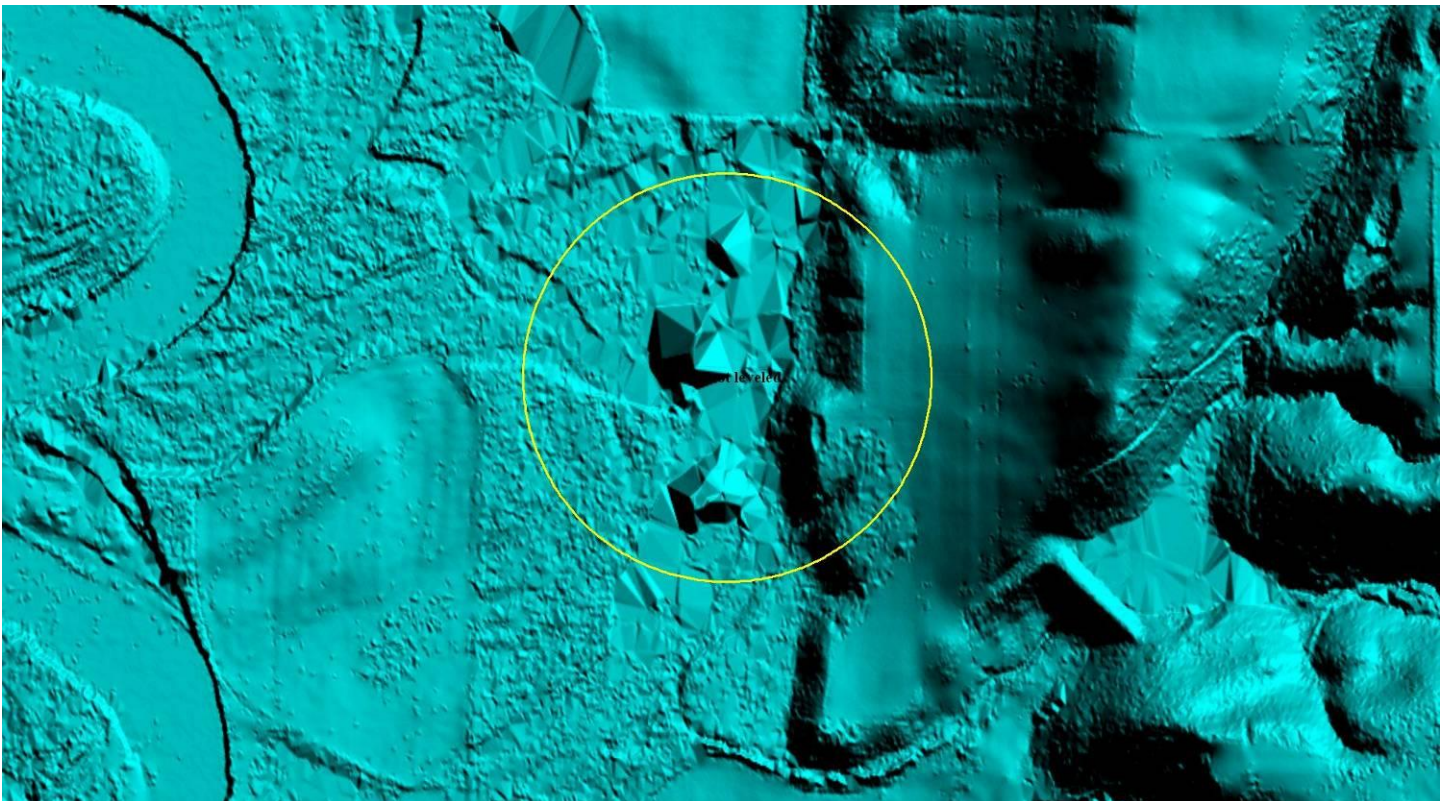
Iowa NW level bldg 2



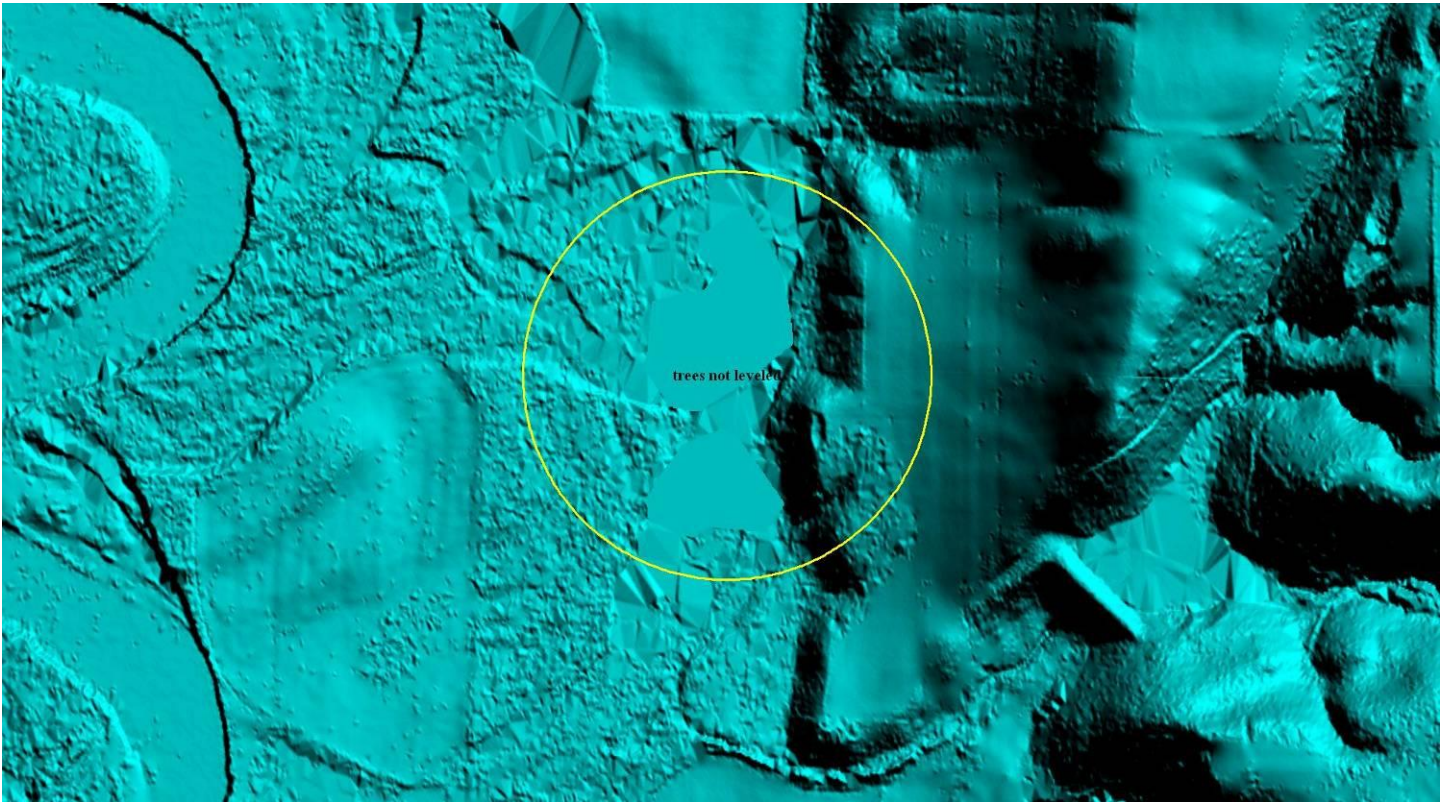
Iowa NW level bldg 2 (Fixed)



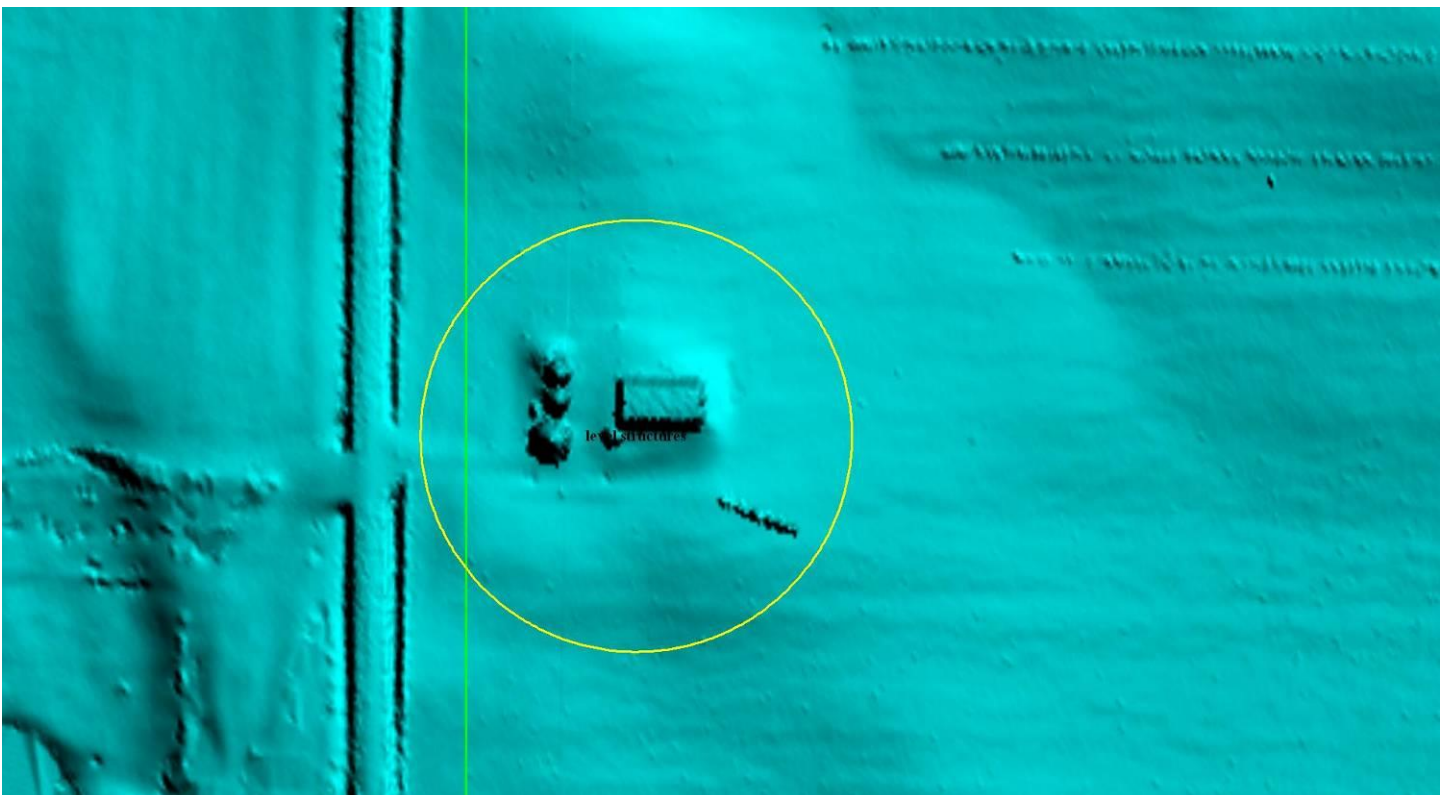
Iowa NW level trees



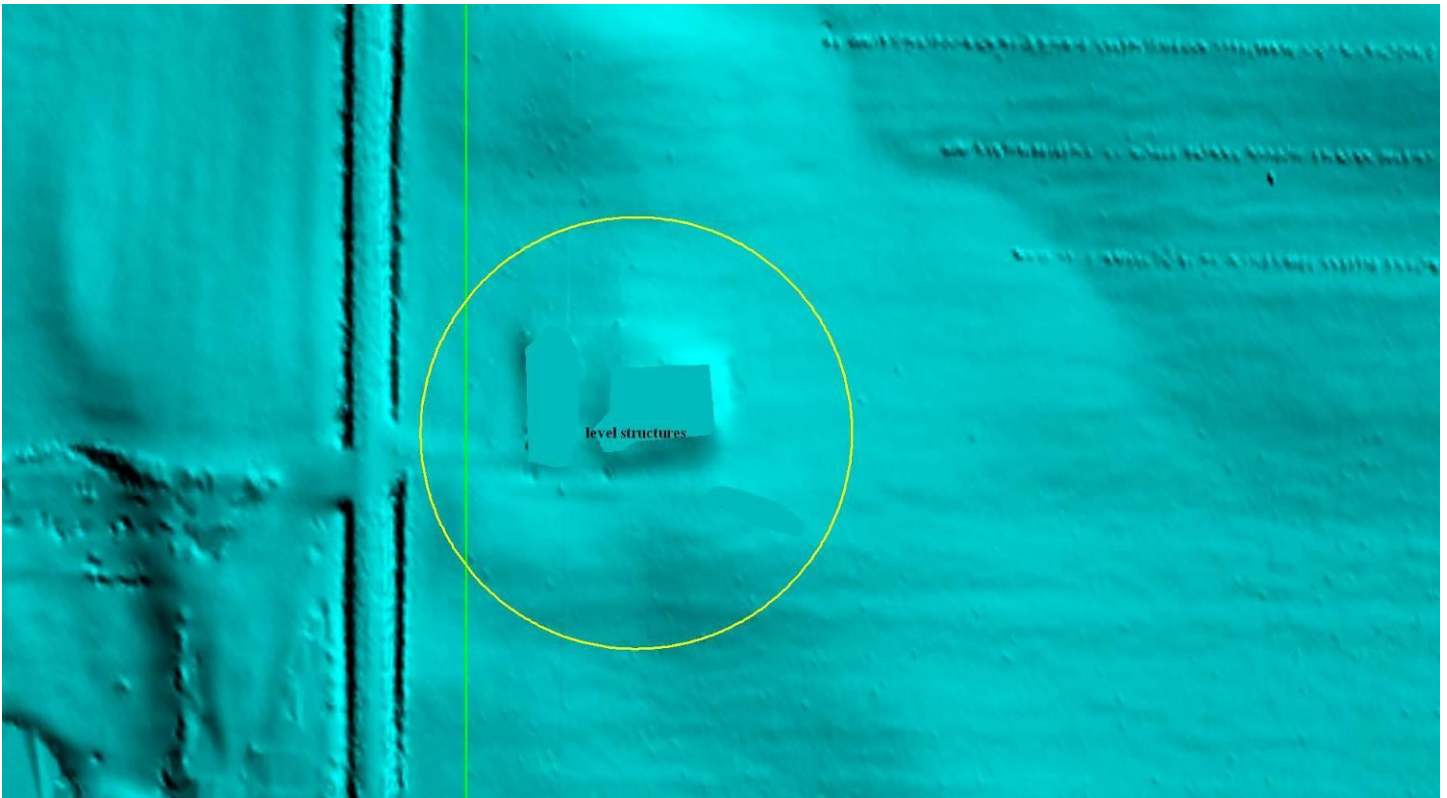
Iowa NW level trees (Fixed)



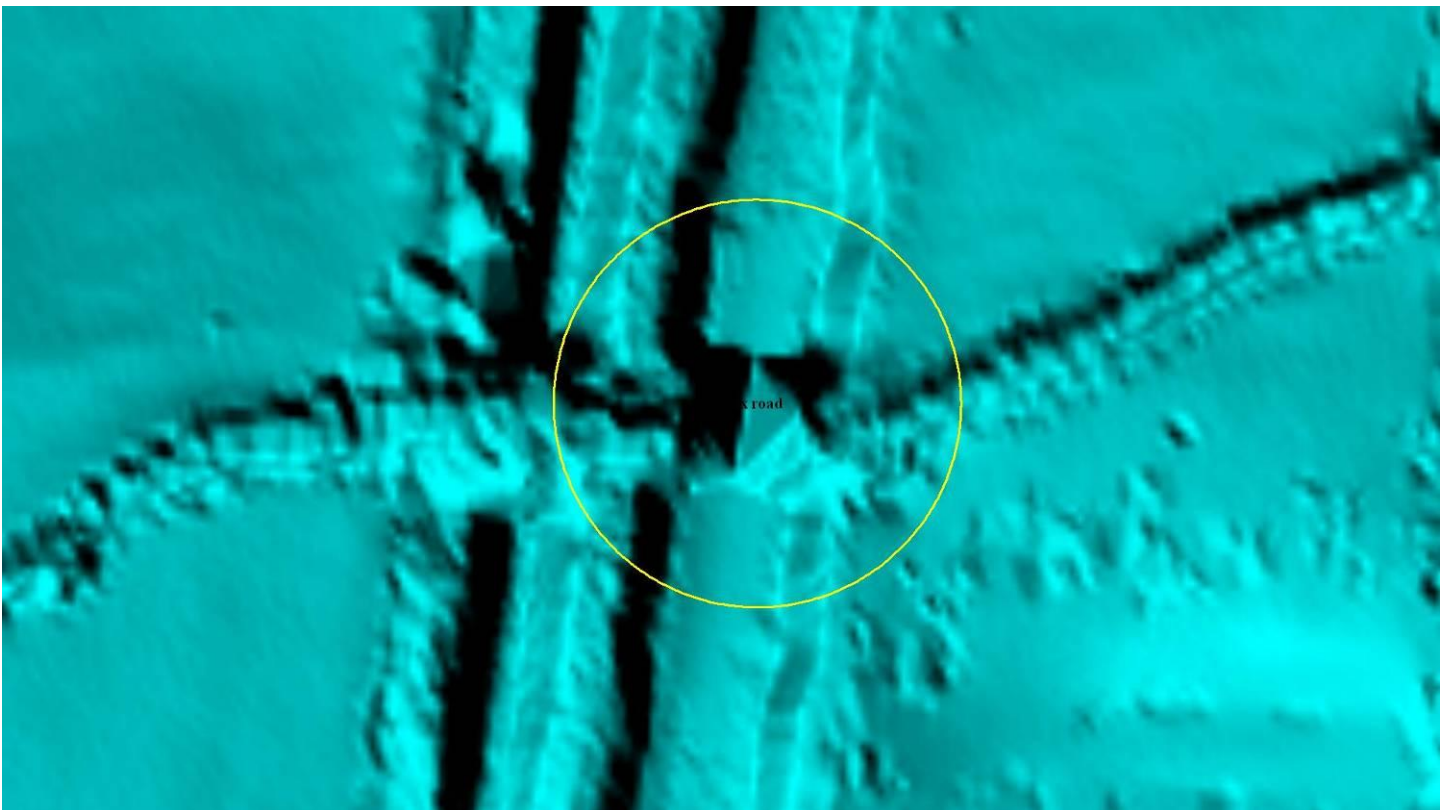
Iowa NW remove structures



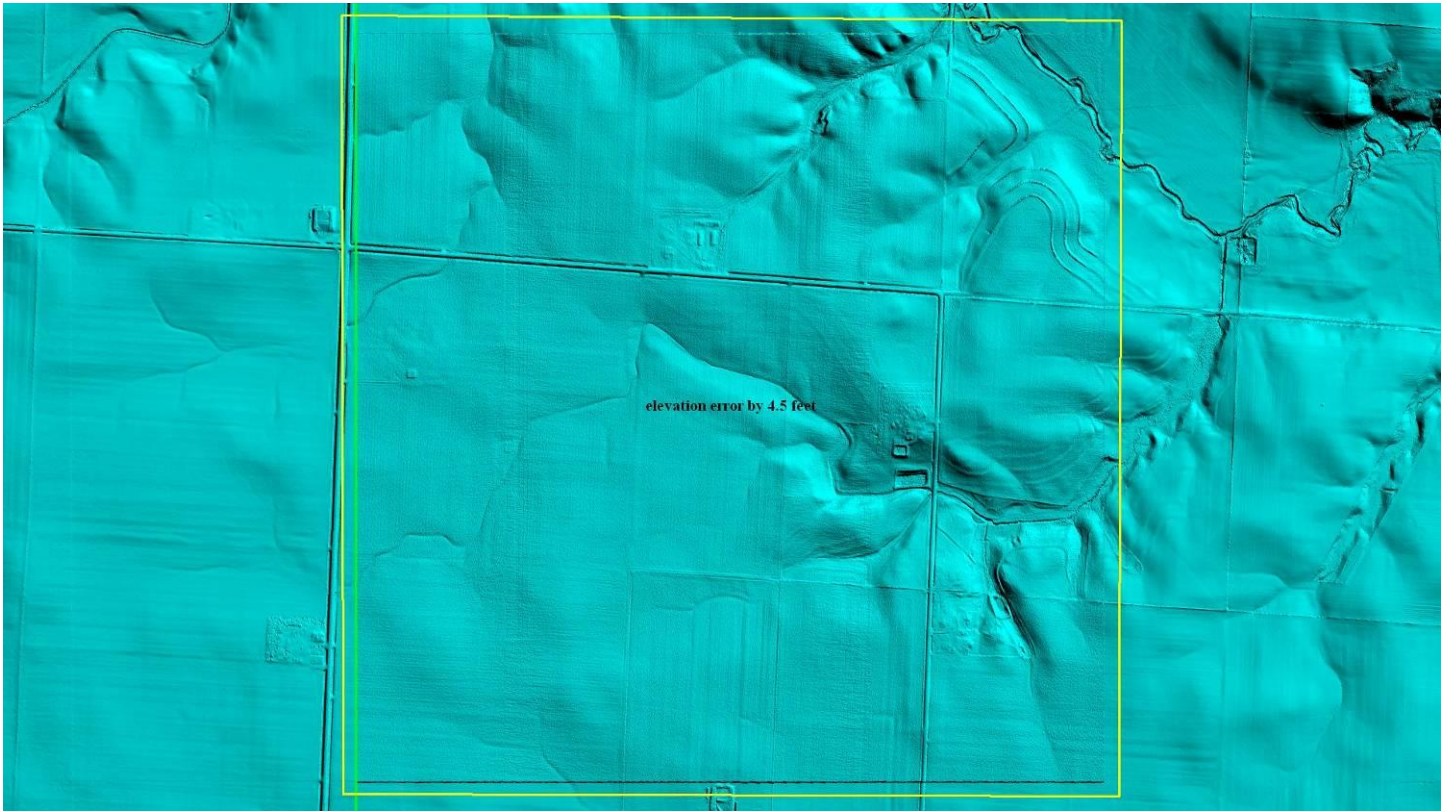
Iowa NW remove structures (Fixed)



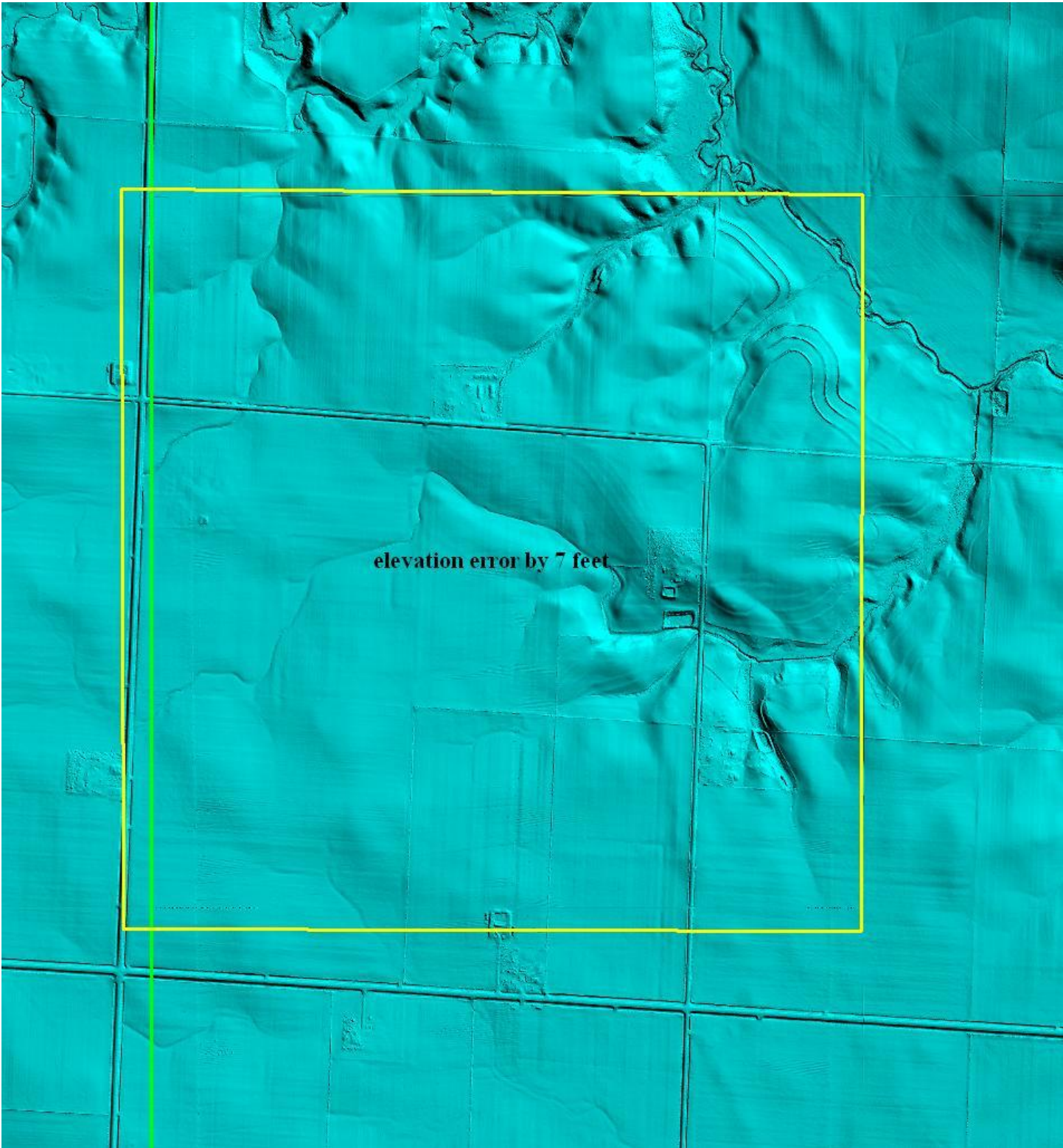
Iowa NW 04 fix road 1 not fixed



Iowa NW 05 elevation error

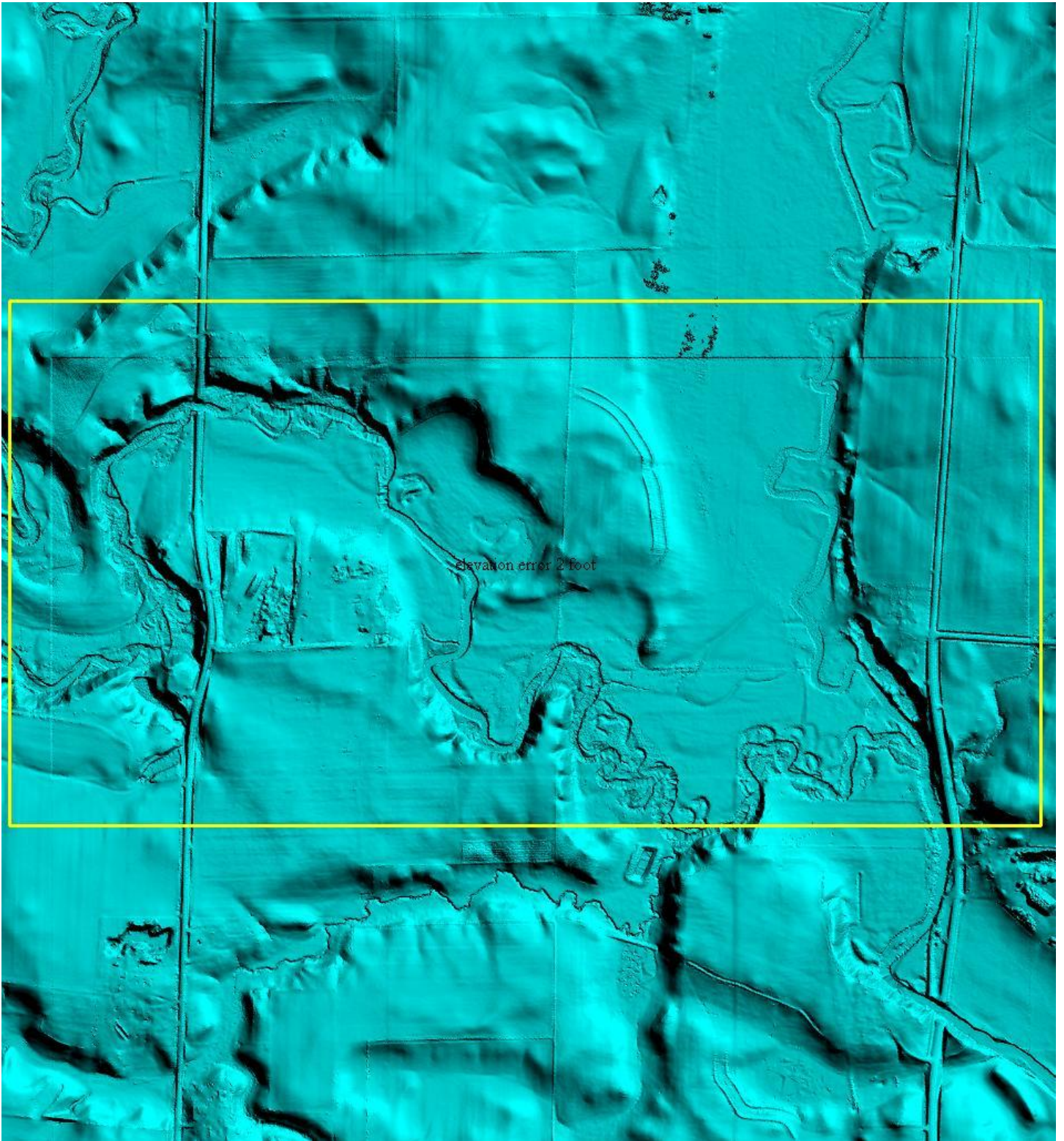


Iowa NW 05 elevation error (Fixed)

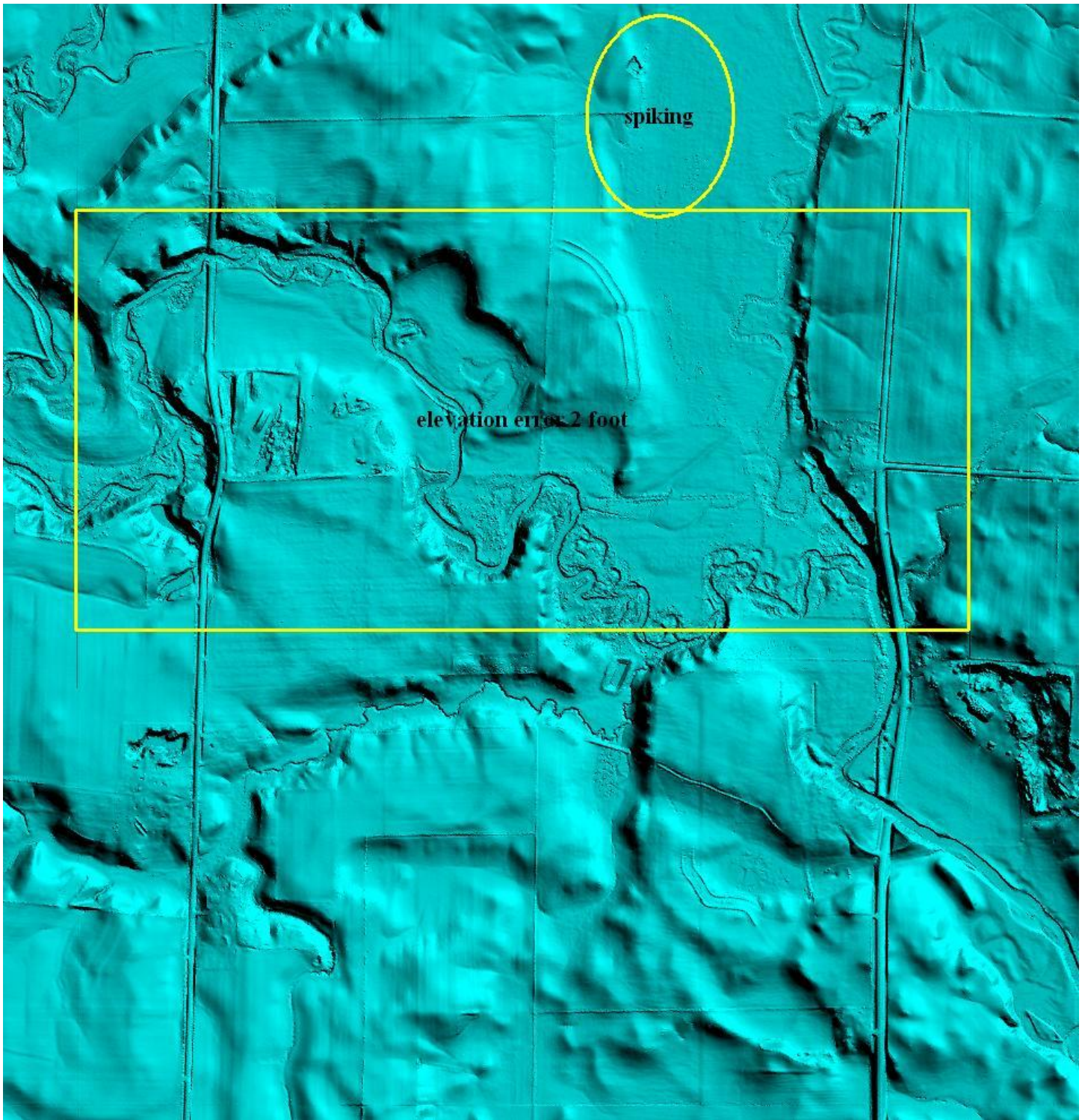


elevation error by 7 feet

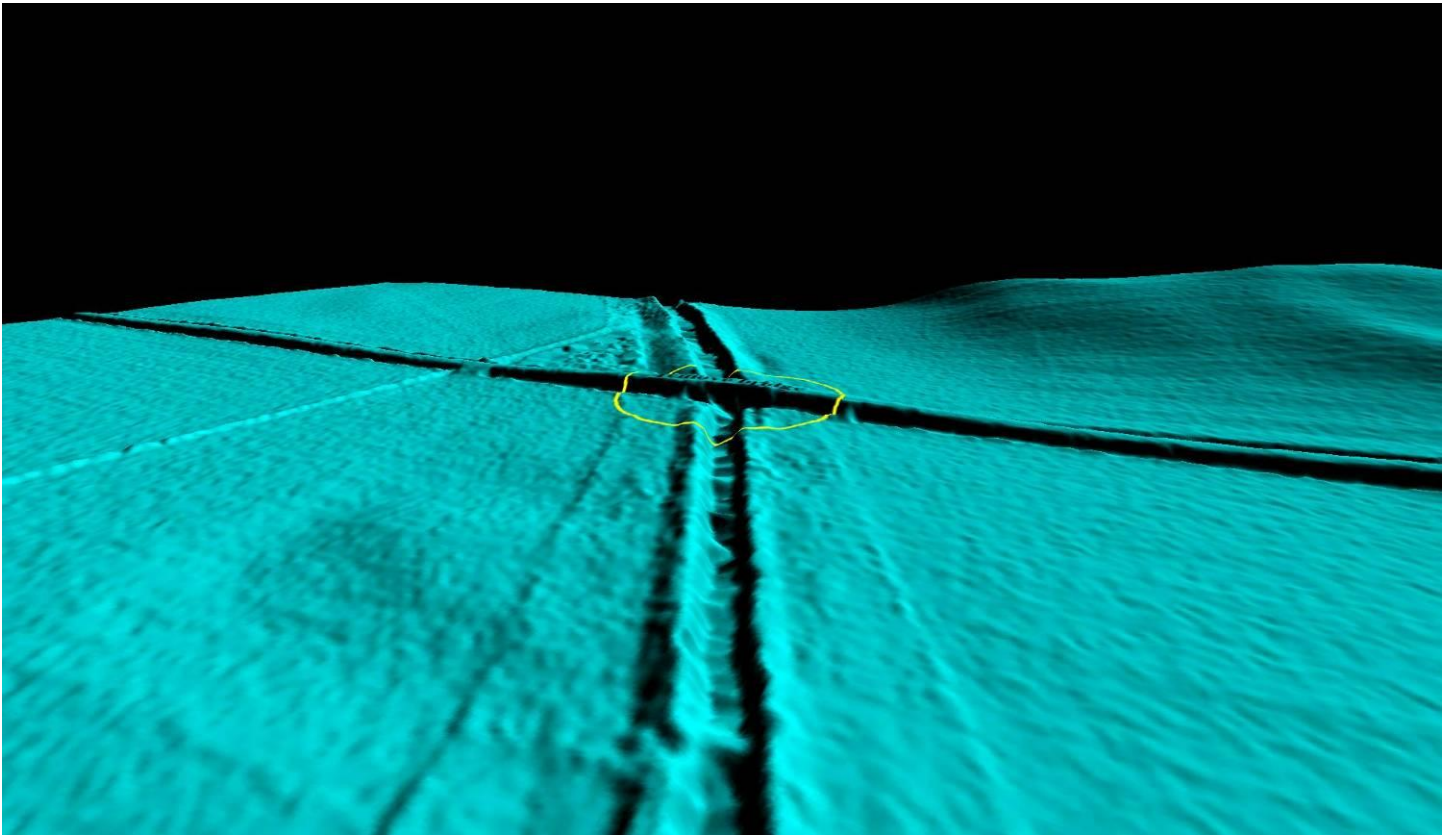
Iowa NW 06 elevation error



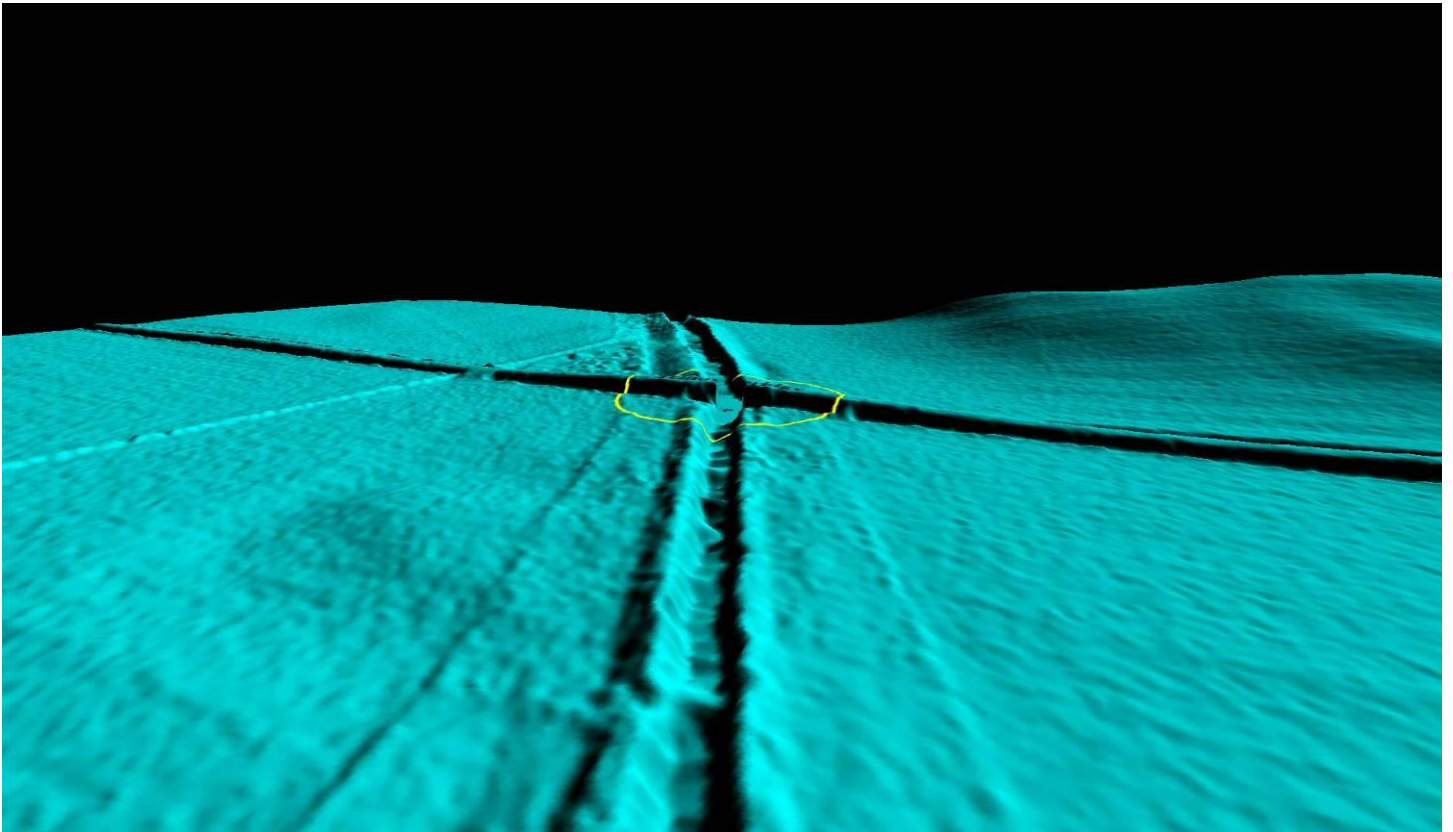
Iowa NW 06 elevation error (Fixed)



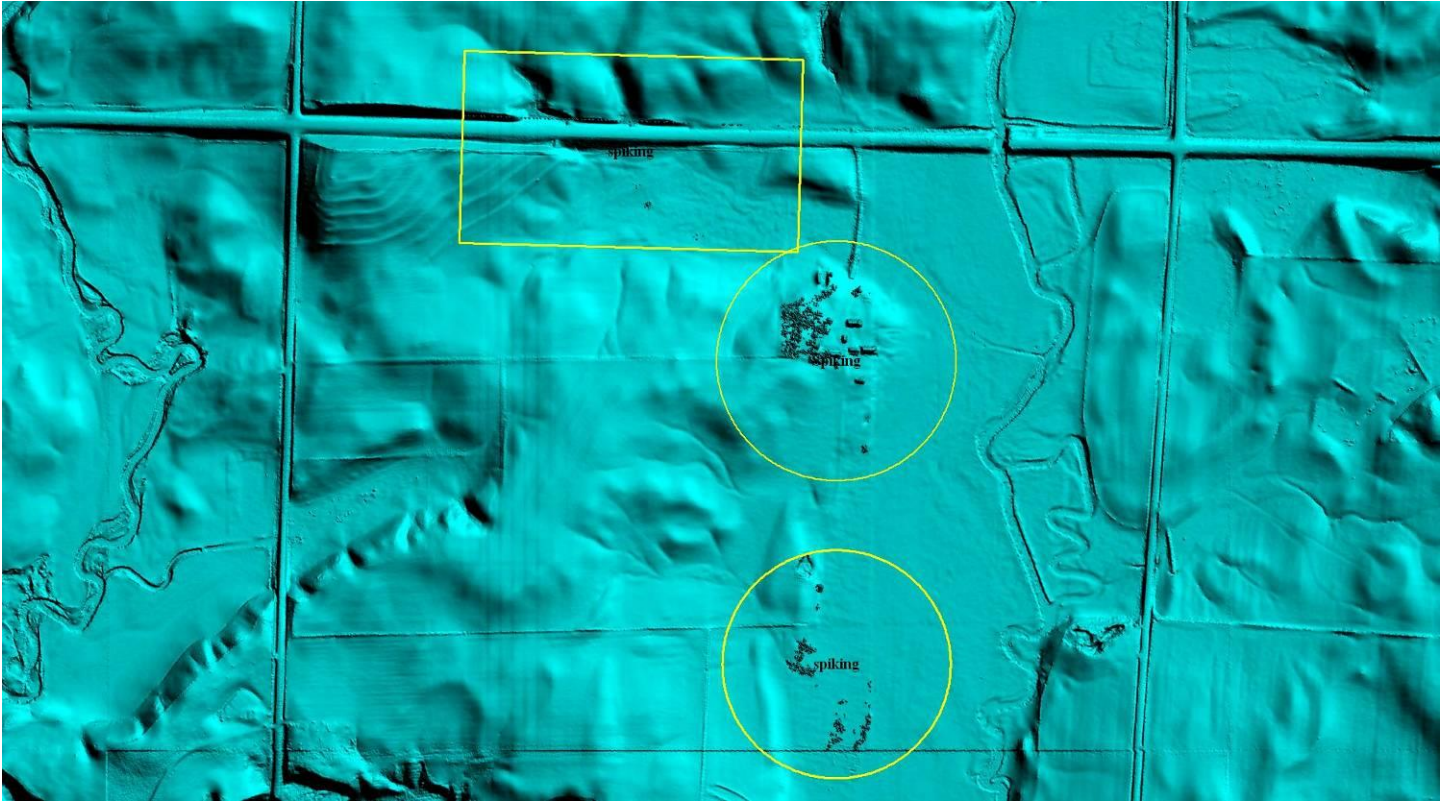
Iowa NW remove bridge



Iowa NW remove bridge (Fixed)



Iowa NW spiking



Iowa NW spiking (Fixed)

