

# High Resolution Elevation QA Review Report

Project: Iowa SC 01-13 Lidar 2010 Contract ID:

Liaison: Bob Lermen Partner(s): Contractor: Sanborn Map Co. Inc

Data Delivery Date: 02/10/2009, 09/0 Date Data Reviewed: 04/20/2010 - 04

Reviewer: Rusty Grout / Eric Jaramill Total Square Miles Reviewed: 4088.3 sq. mi

Elevation Type: LIDAR Format: xyz Grid Spacing: 1 meter Tile size: 1000 x 1000

Projection: UTM Zone: 15 Datum: NAD83 Units: Meters

Licensing: Public Domain Metadata: Project Level Acquisition Date: 04/07/2007 thru

## Materials Received:

Bare earth ASCII .xyz files  
Las point cloud .xyz files  
Metadata  
Shape files

Vertical Accuracy Test Performed: Yes Test Point Source: Contractor RMSE: 0.272 meters

## Vertical Accuracy Test Notes:

A vertical check was performed on Iowa SC 01-13 bare earth data. See the Iowa Statewide Lidar Project Vertical Accuracy Report sent with the final .img data.

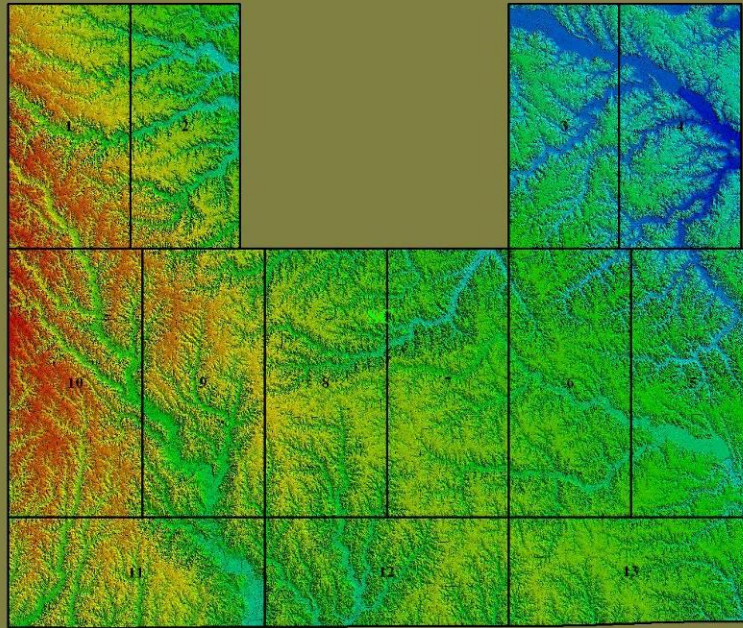
## QA Review Summary:

All of Iowa SC 01-13 one meter Lidar data was reviewed. This data was brought into Global Mapper as .xyz point files. Las point files were created from the .xyz files then gridded to 1 meter data for QA/QC. Errors found throughout this project and fixed in Global Mapper are large amounts of bridges not taken out, bldgs not taken out, missing data in water (errors found on this project and fixed by the contractor is missing data, see examples below) . This data was regrided to 1 meter .img files. This data is accepted and will be archived.

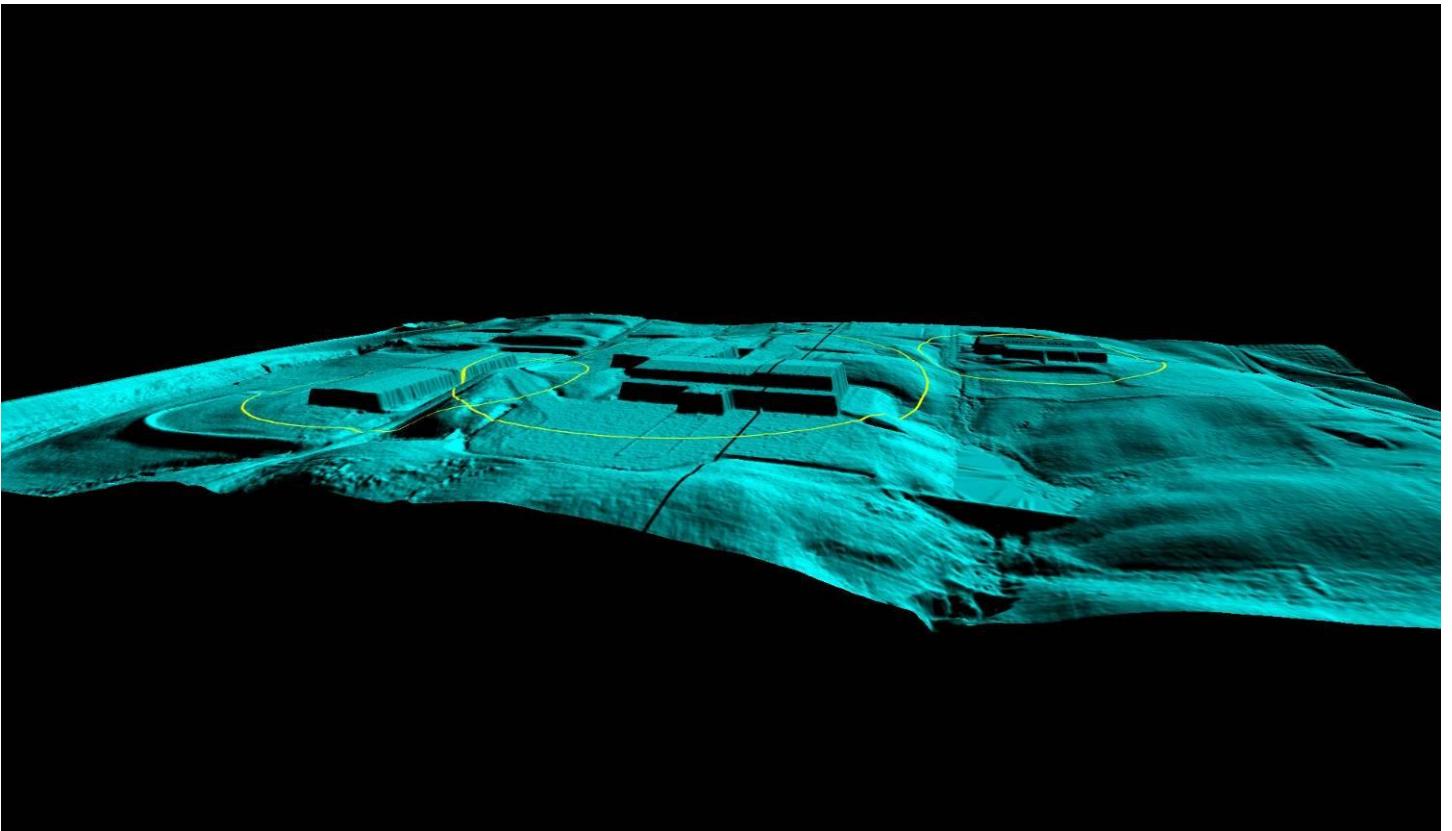
See error JPEG examples and documents attached below.

Conclusions: 1. 89% of artifacts removed  
2. 90% of vegetation removed  
3. 95% of buildings removed

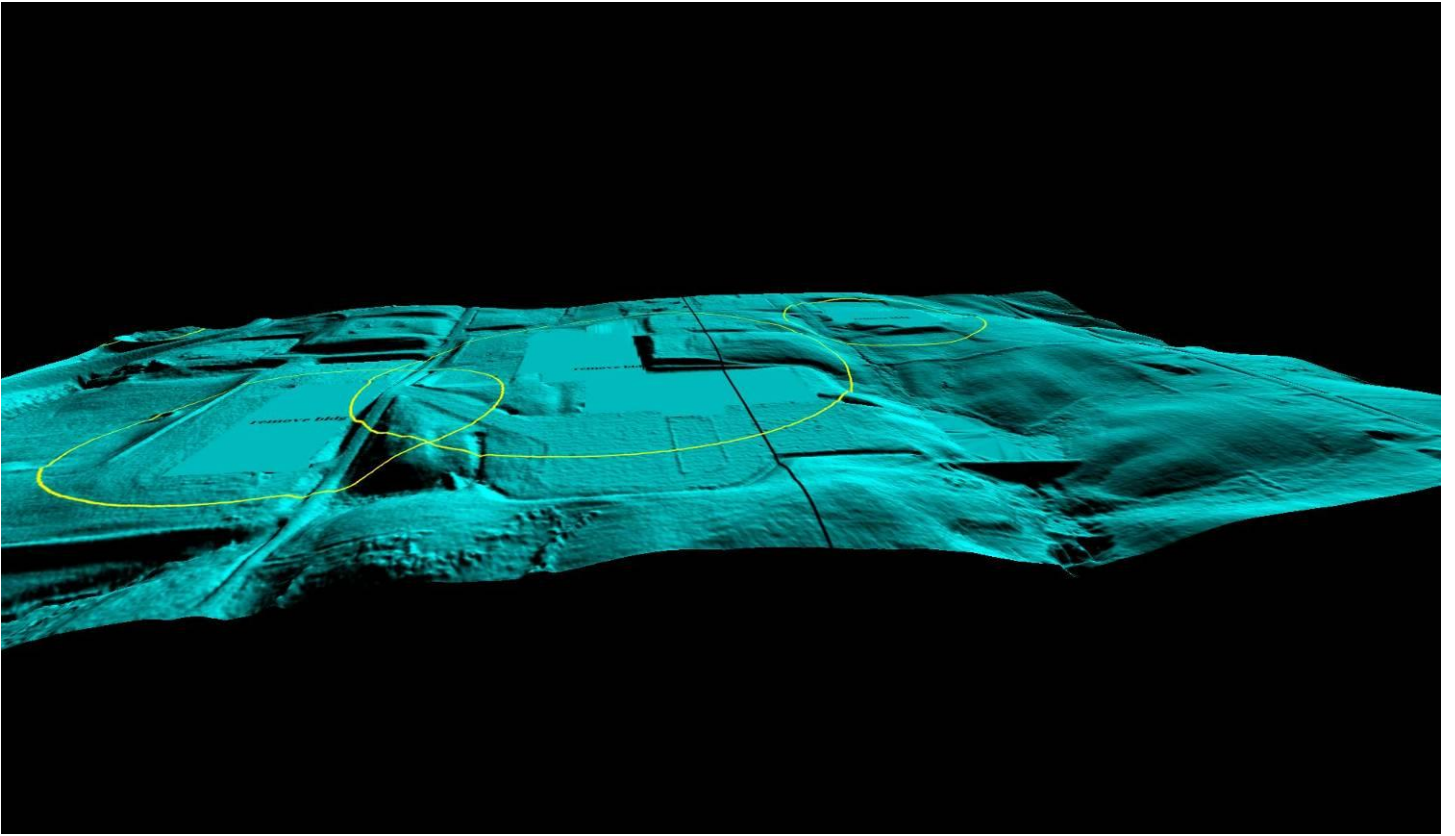
Iowa SC 01-13



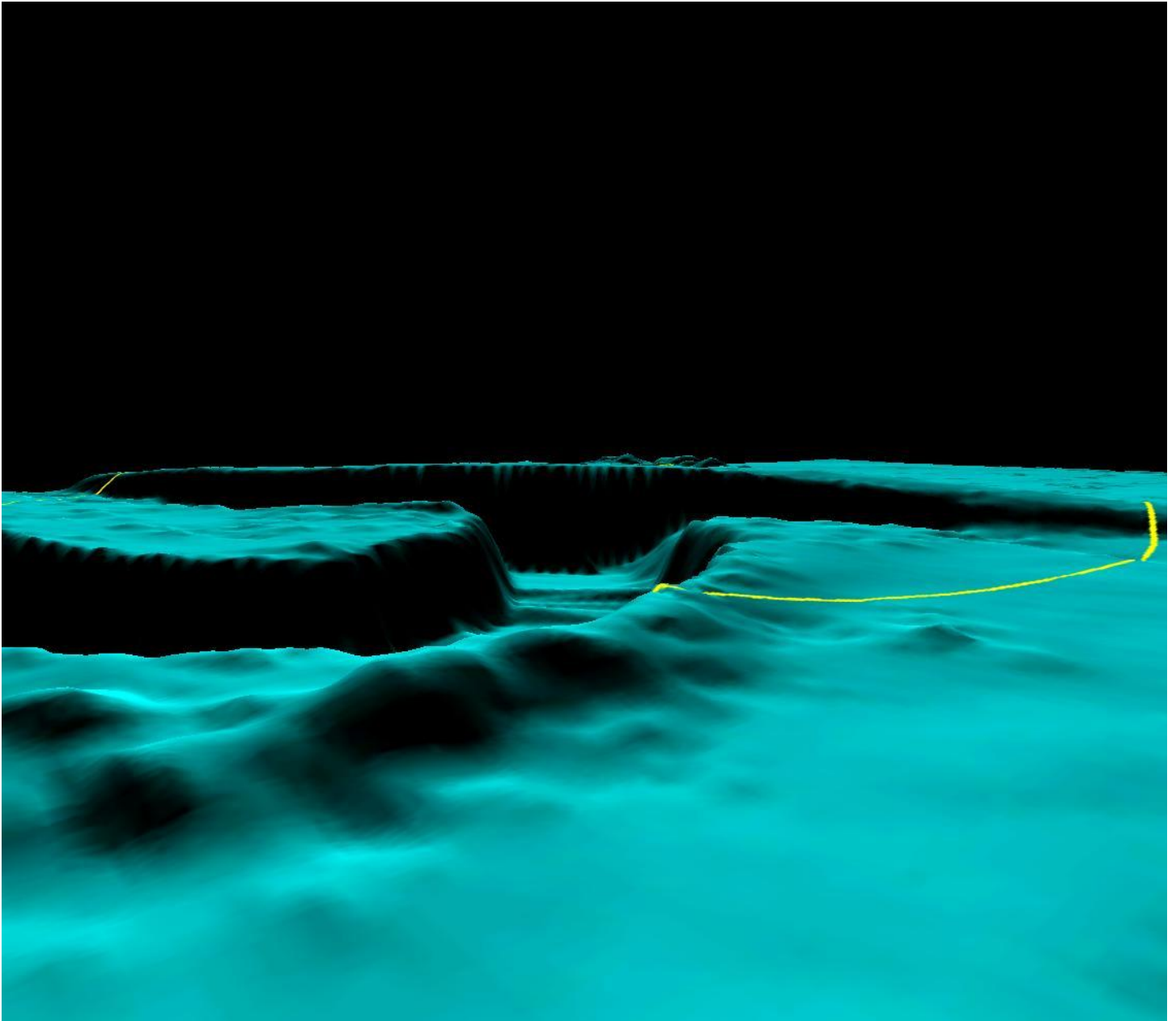
Iowa SC bldgs not taken out



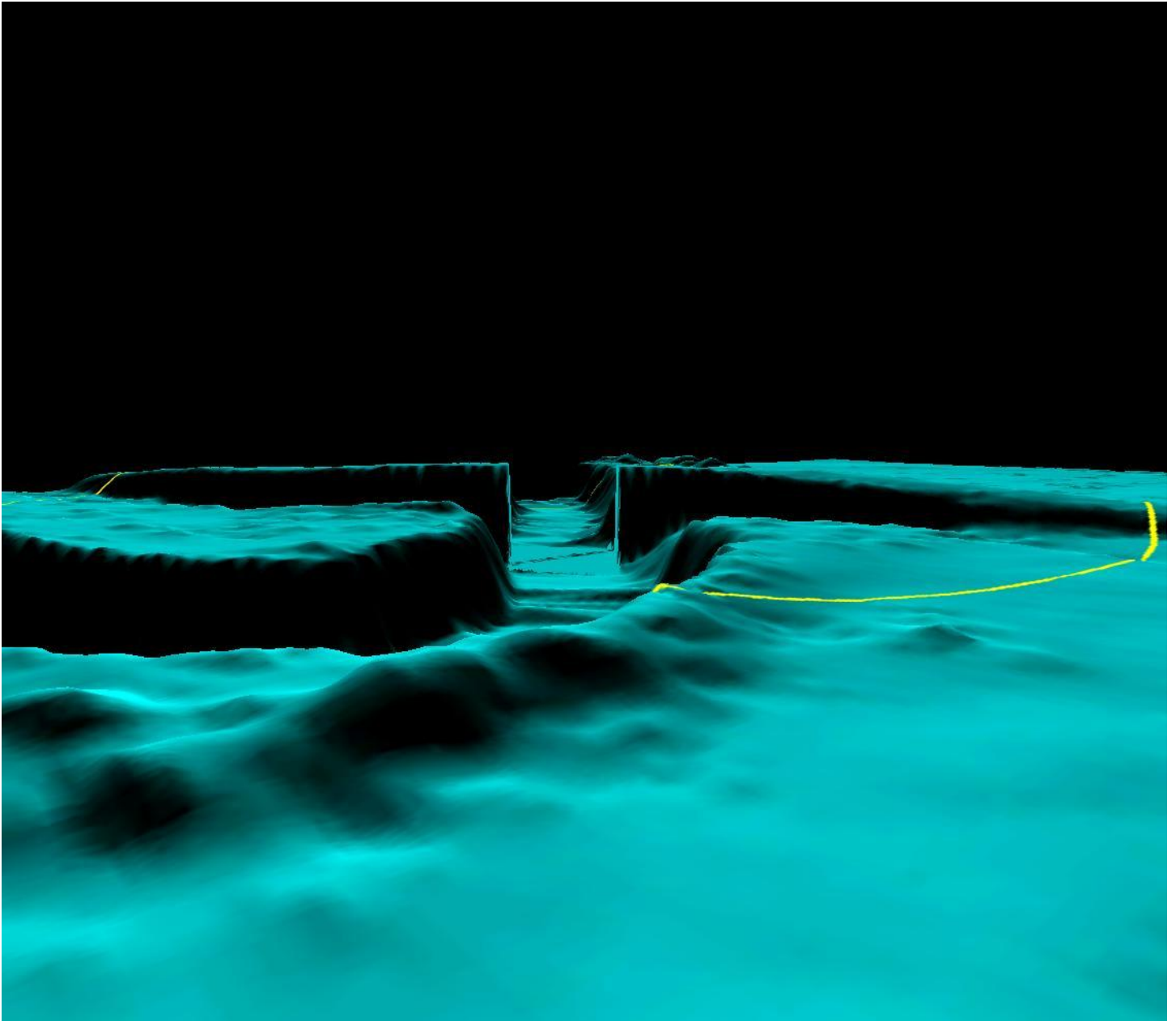
Iowa SC bldgs not taken out (Fixed)



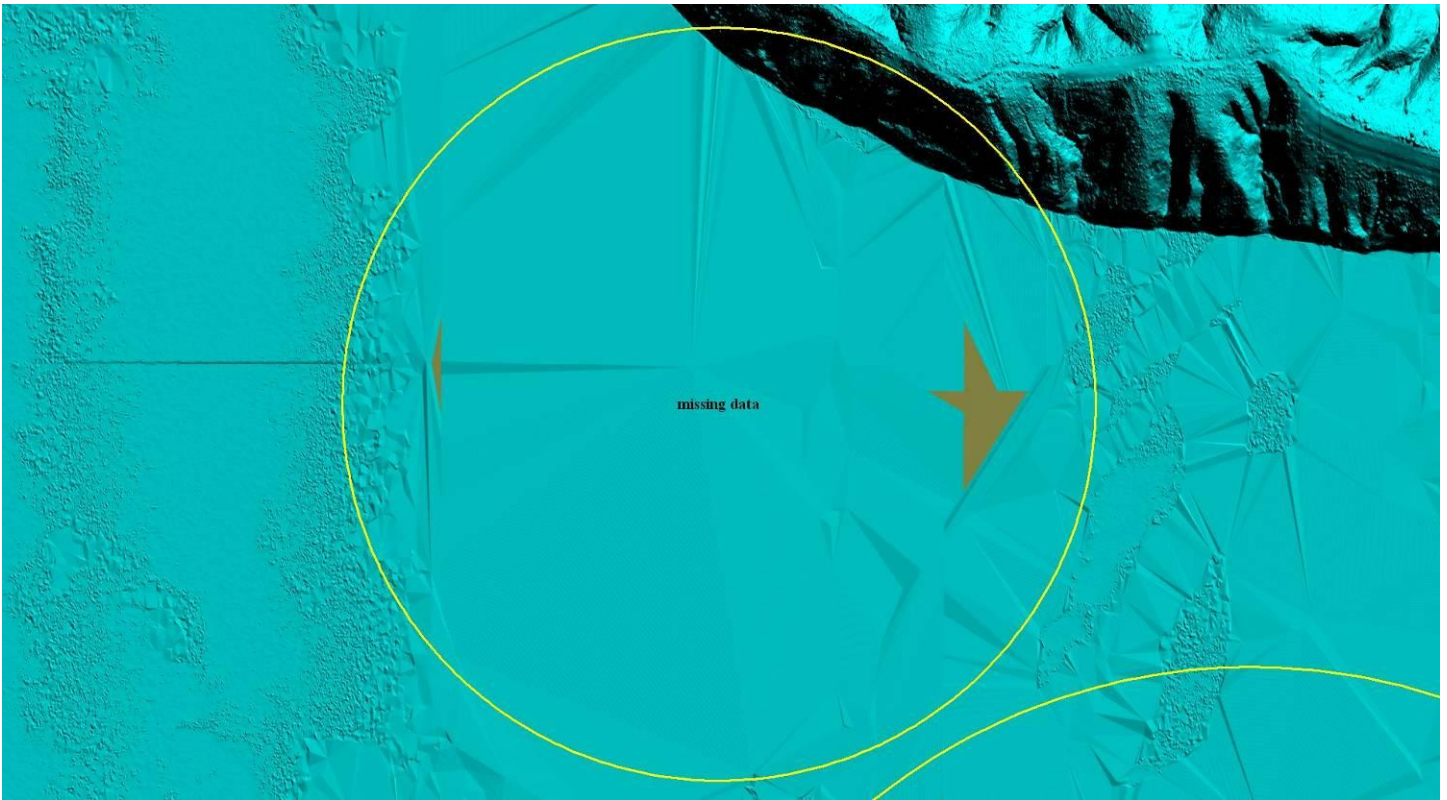
Iowa SC bridges not taken out



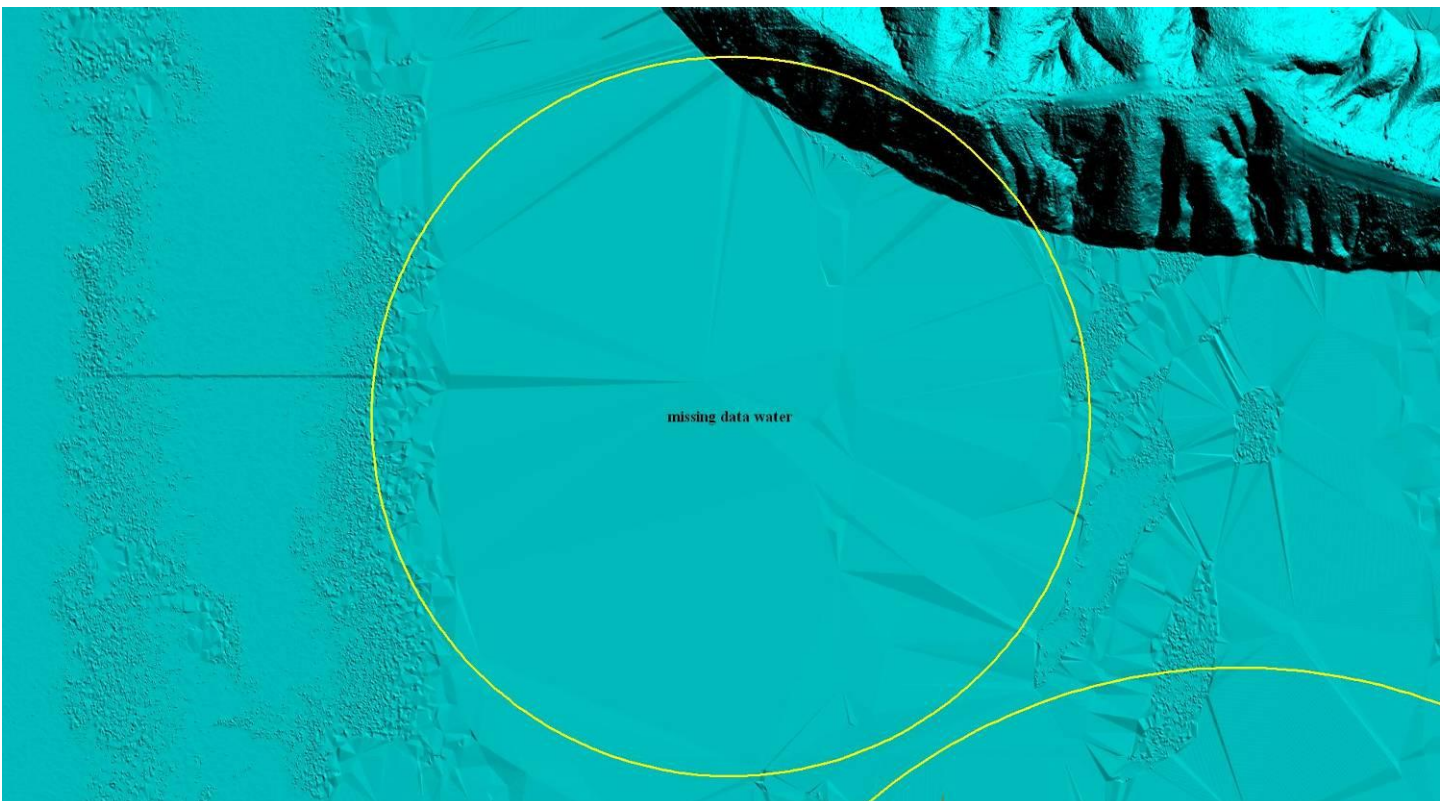
Iowa SC bridges not taken out (Fixed)



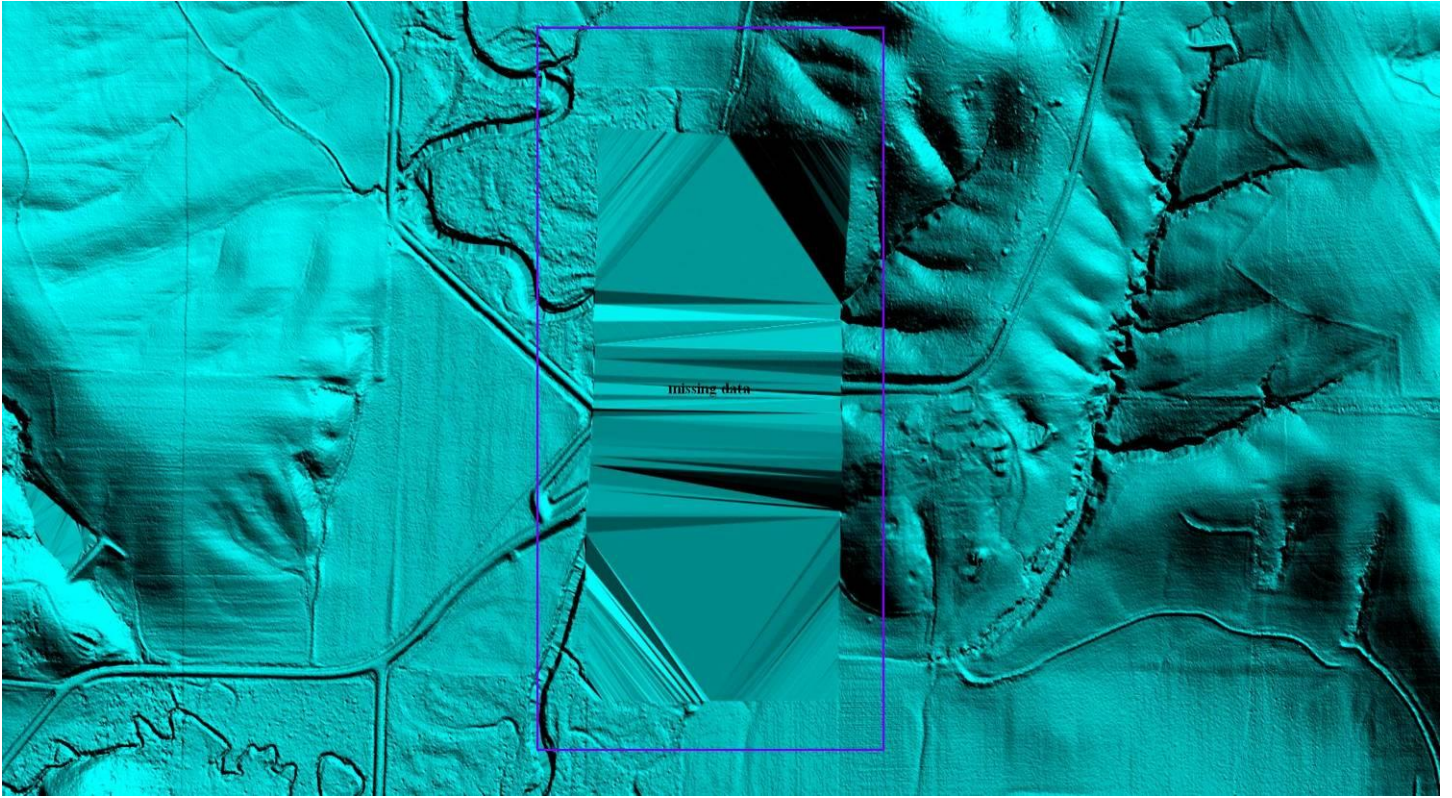
Iowa SC missing data in the water



Iowa SC missing data in the water (Fixed)



Iowa SC 10 missing data



Iowa SC 10 missing data (Fixed)

