

# High Resolution Elevation QA Review Report

Project: Iowa SE 01-15 SEF 01-03 Lidar 2010 Contract ID:

Liaison: Bob Lermen Partner(s): Contractor: Sanborn Map Co. Inc

Data Delivery Date: 02/10/2009, 03/1 Date Data Reviewed: 01/14/2011 - 01

Reviewer: Rusty Grout / Eric Jaramill Total Square Miles Reviewed: 5660 sq. mile

Elevation Type: LIDAR Format: xyz Grid Spacing: 1 meter Tile size: 1000 x 1000

Projection: UTM Zone: 15 Datum: NAD83 Units: Meters

Licensing: Public Domain Metadata: Project Level Acquisition Date: 04/07/2007 thru

## Materials Received:

Bare earth ASCII .xyz files  
Las point cloud .xyz files  
Metadata  
Shape files

Vertical Accuracy Test Performed: Yes Test Point Source: Contractor RMSE: 0.323 and 0.18

## Vertical Accuracy Test Notes:

A vertical check was performed on Iowa SE 01-15 and SEF 01-03 bare earth data. See the Iowa Statewide Lidar Project Vertical Accuracy Report sent with the final .img data.

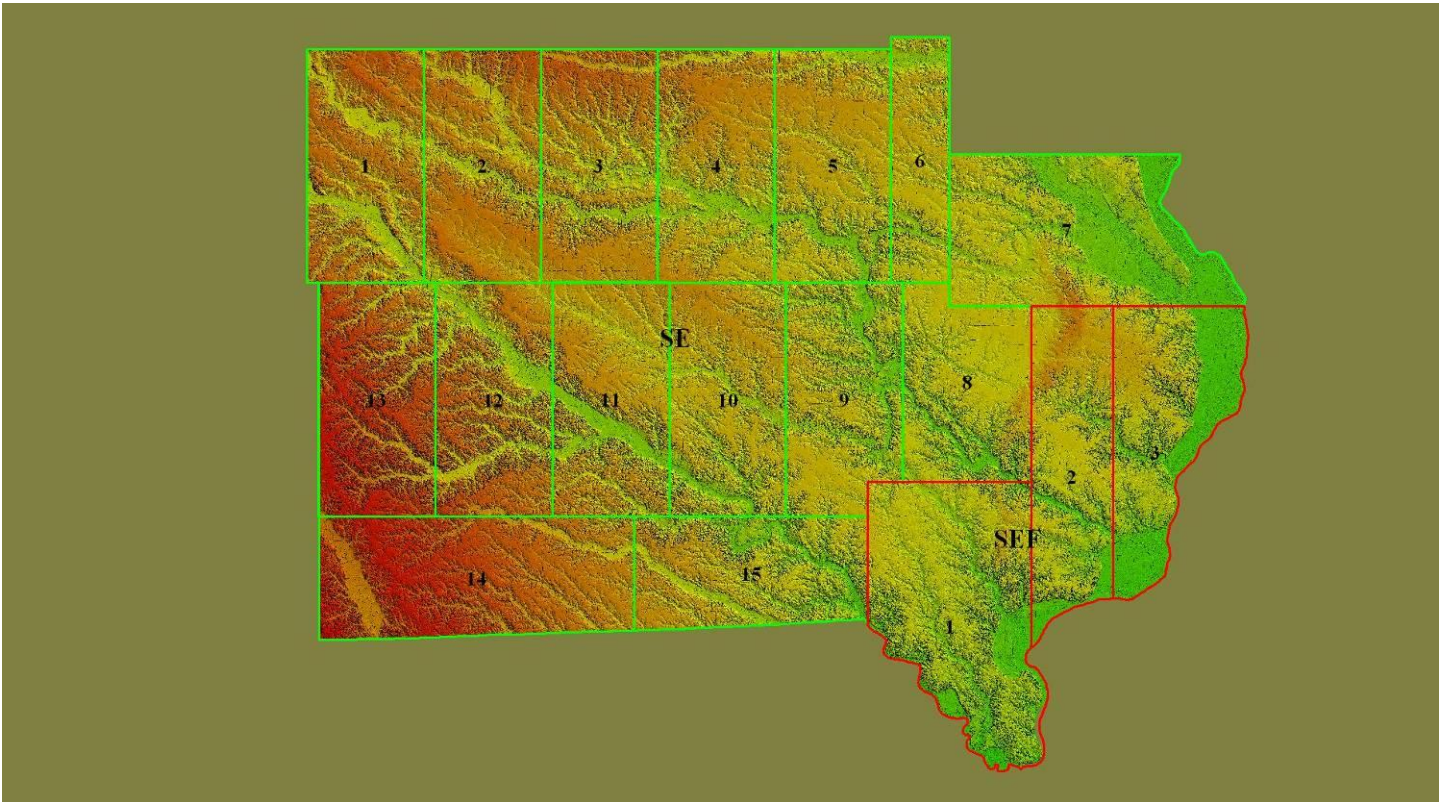
## QA Review Summary:

All of Iowa SE 01-15, SEF 01-03 one meter Lidar data was reviewed. This data was brought into Global Mapper as .xyz point files. Las point files were created from the .xyz files then gridded to 1 meter data for QA/QC. Errors found throughout this project and fixed in Global Mapper are ( bridges not taken out, areas need to be leveled, bldgs need to be removed, (errors found on this project and fixed by the contractor is elevation errors, missing data and a offset see examples below) .

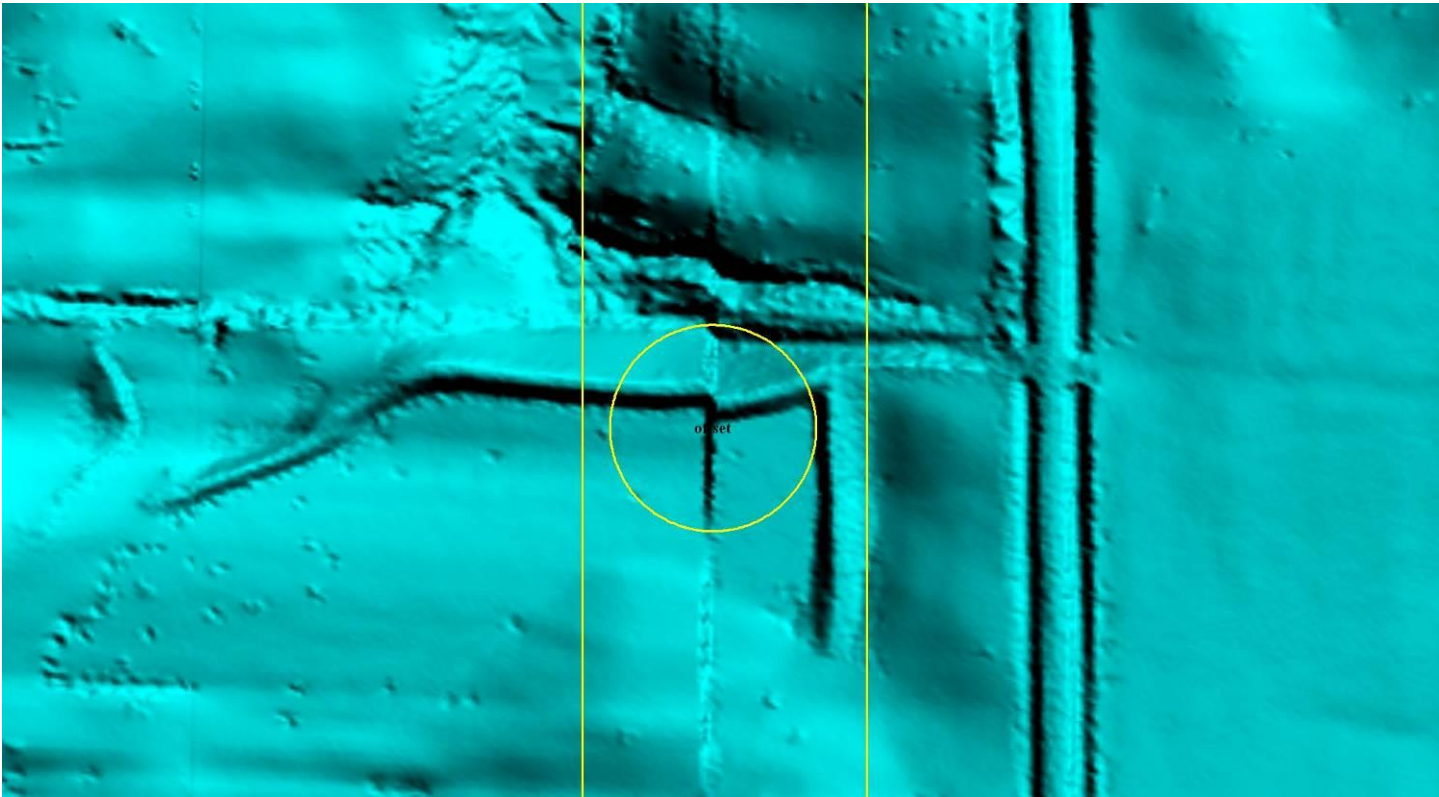
See error JPEG examples and documents attached below.

Conclusions: 1. 89% of artifacts removed  
2. 90% of vegetation removed  
3. 95% of buildings removed

Iowa SE 01-15 SEF 01-03

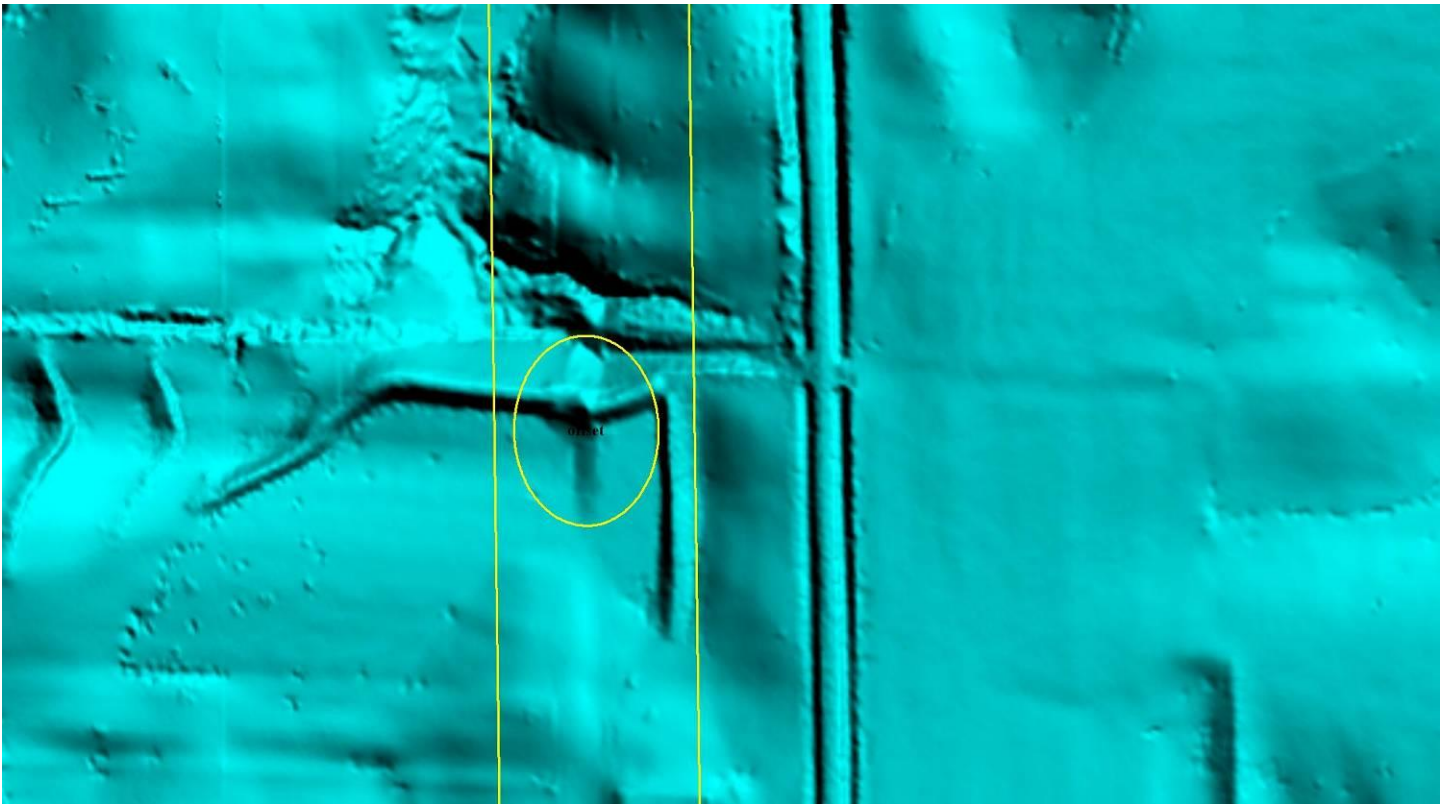


Elevation error and offset

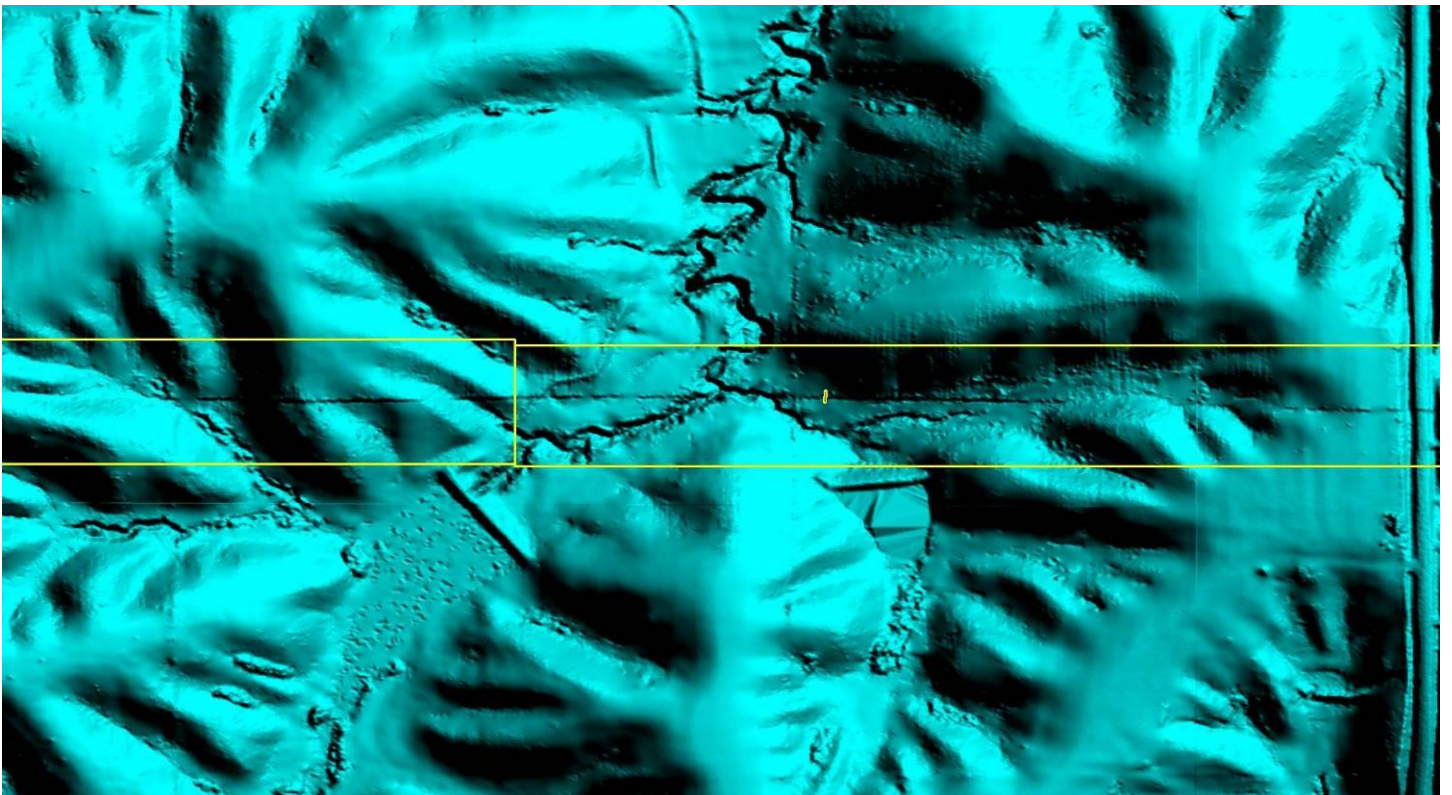




Elevation error and offset (Fixed)

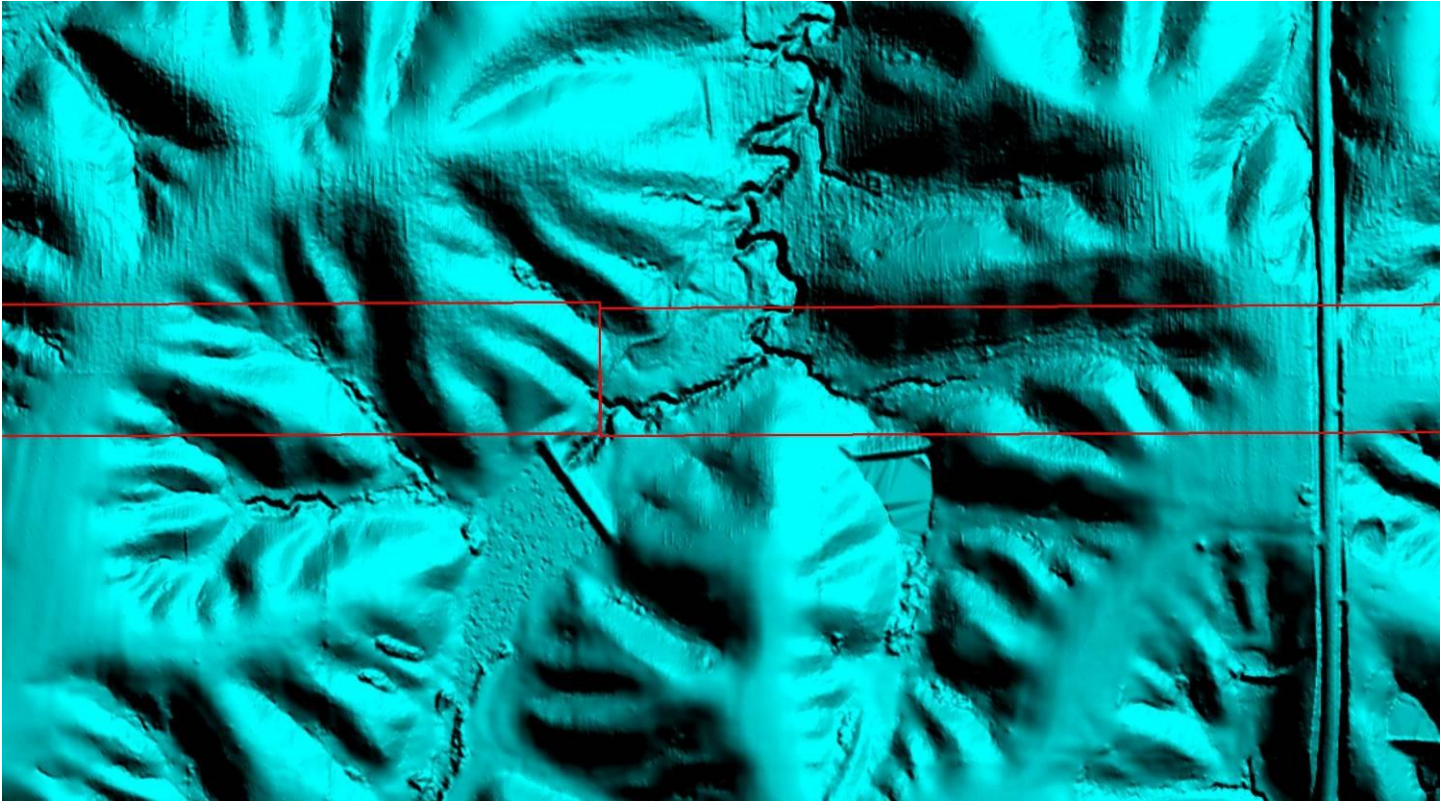


Elevation error

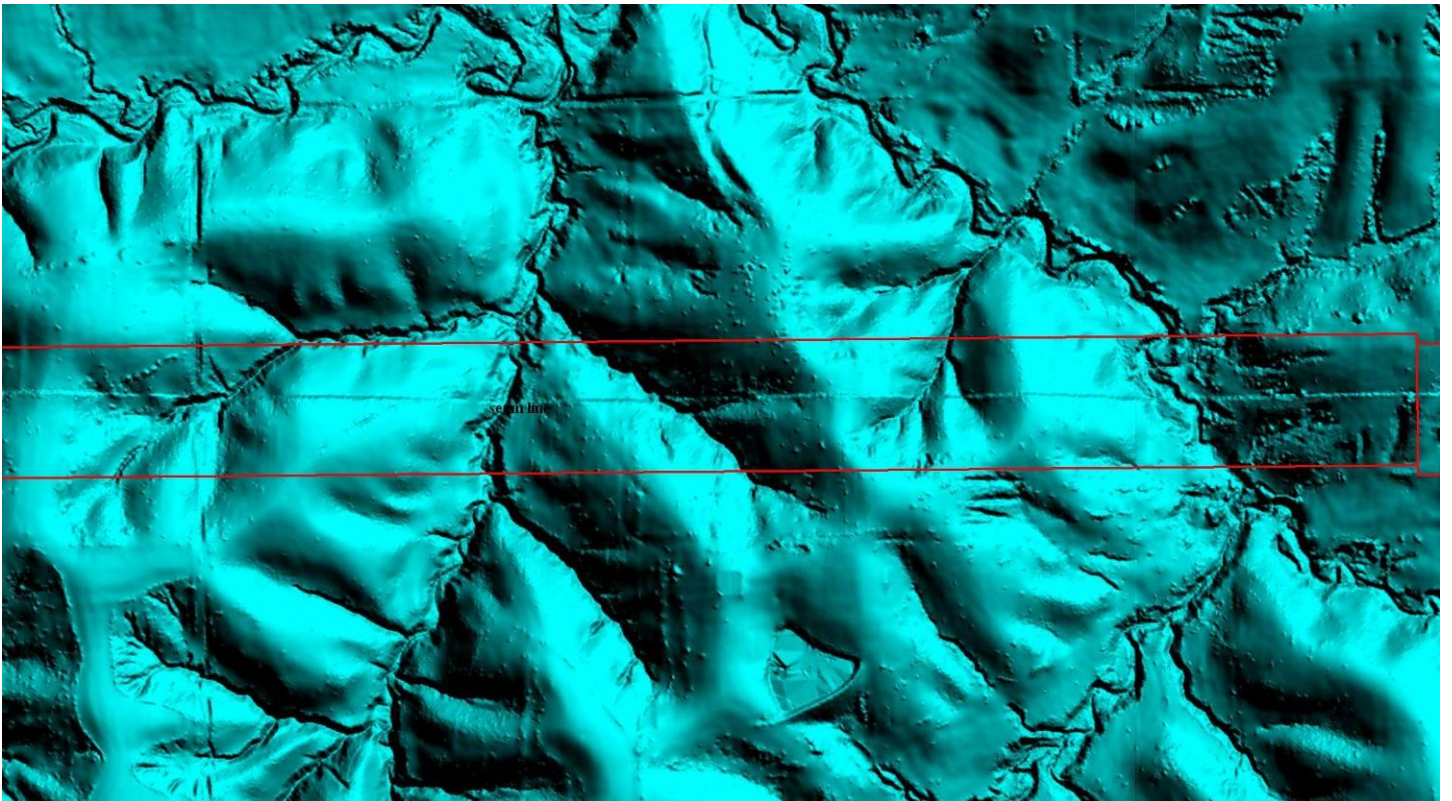




Elevation error (Fixed)

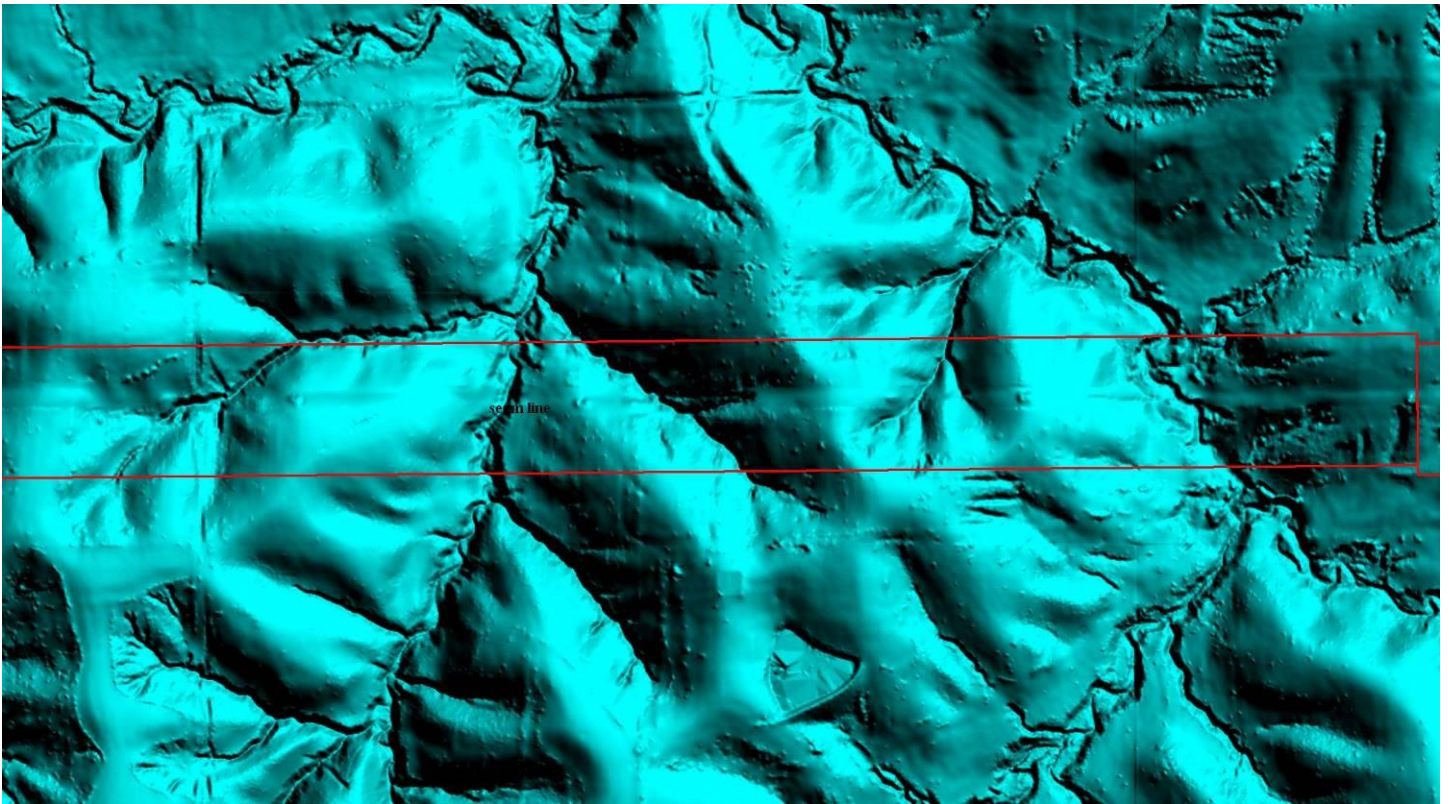


Iowa 11 Elevation error

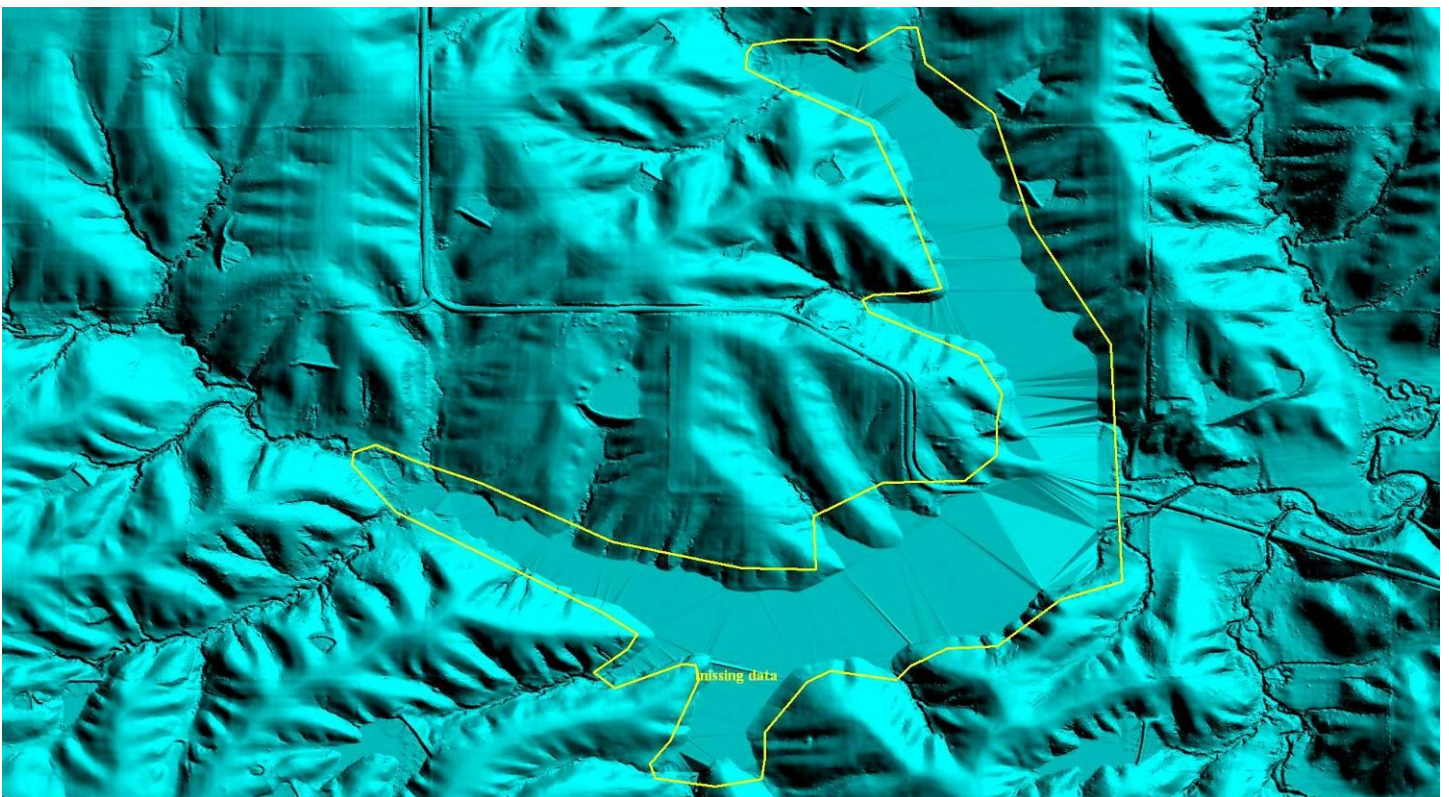




Iowa 11 Elevation error (Fixed)

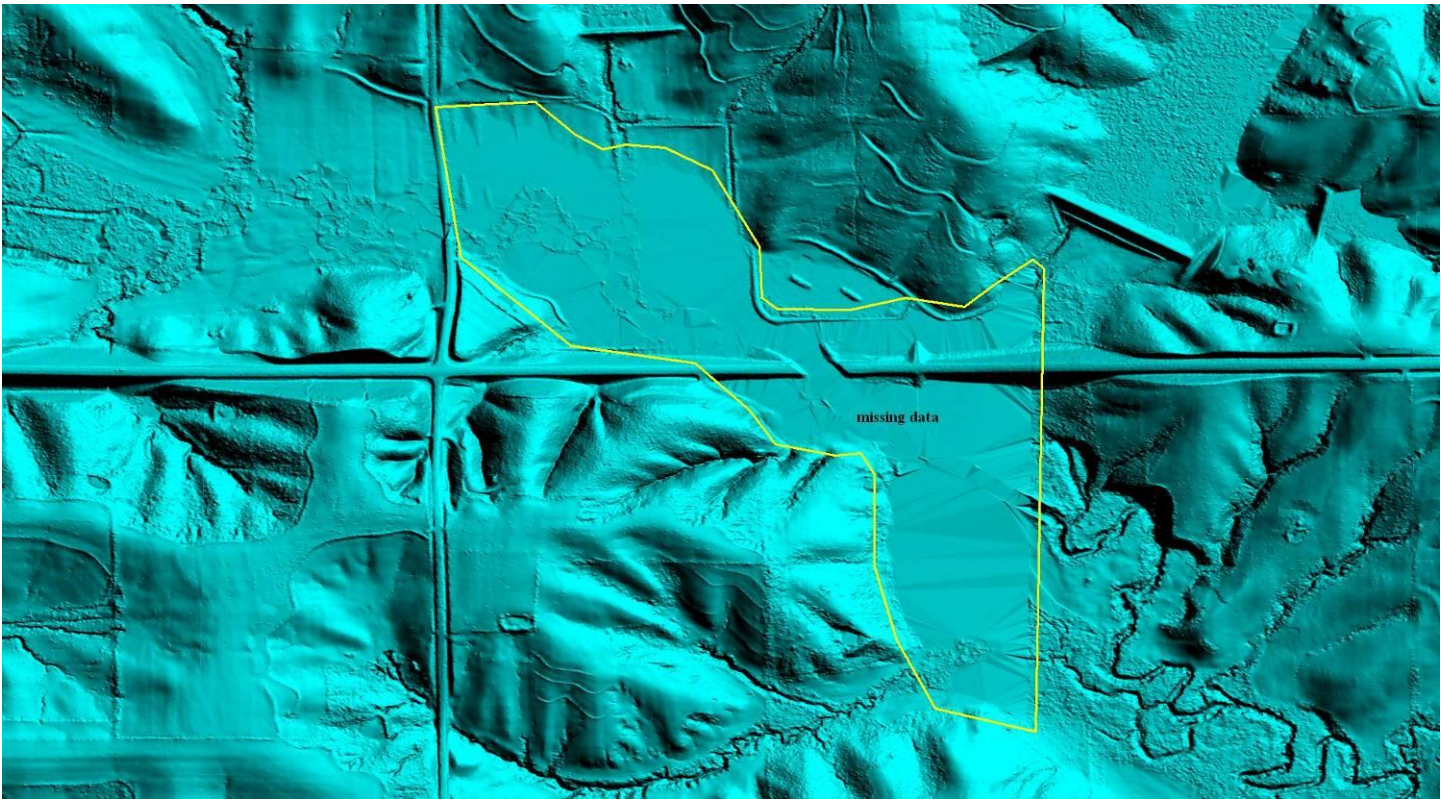


Iowa 14 missing data (not fixed area flooded)

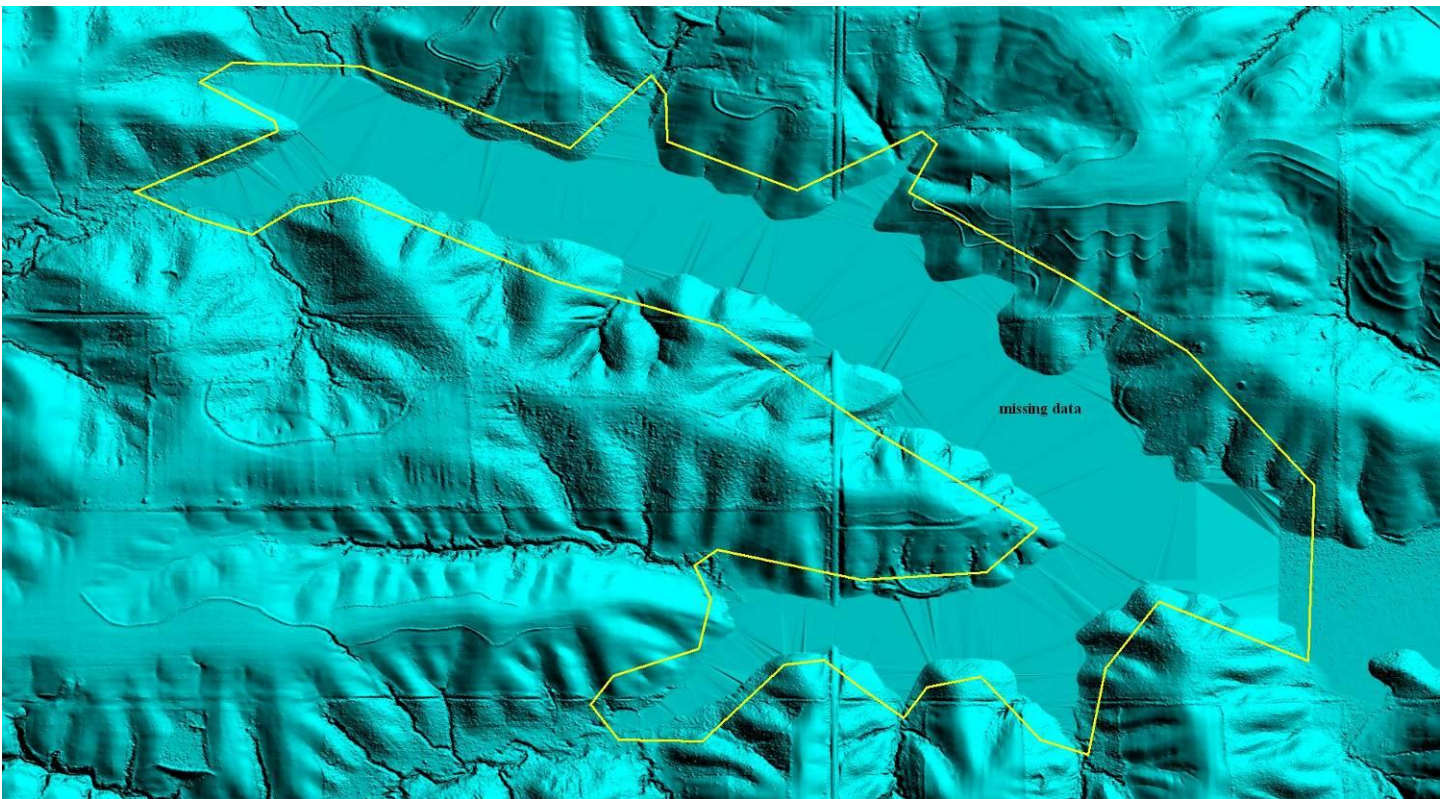




**Iowa 15 missing data 1 (not fixed area flooded)**

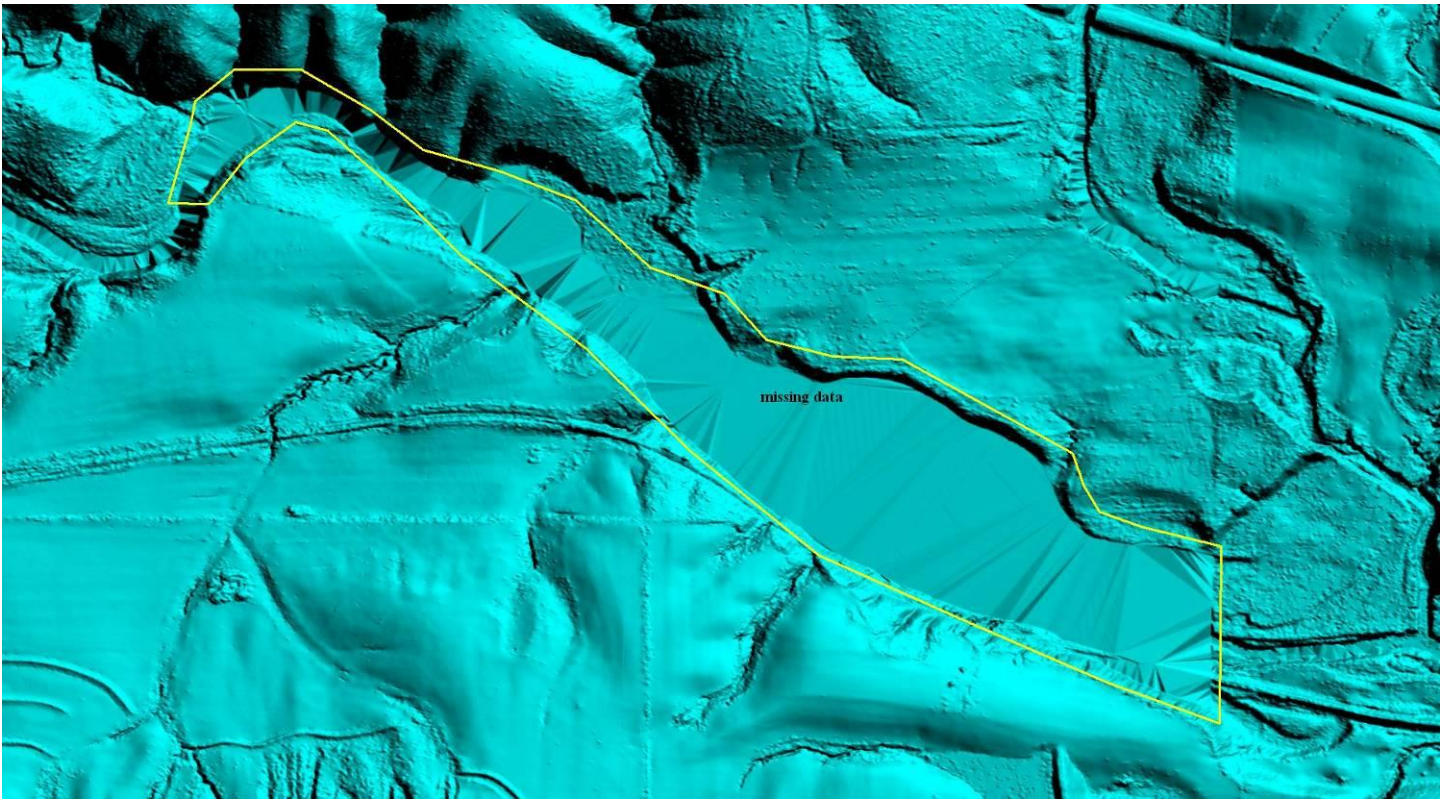


**Iowa 15 missing data 2 (not fixed area flooded)**

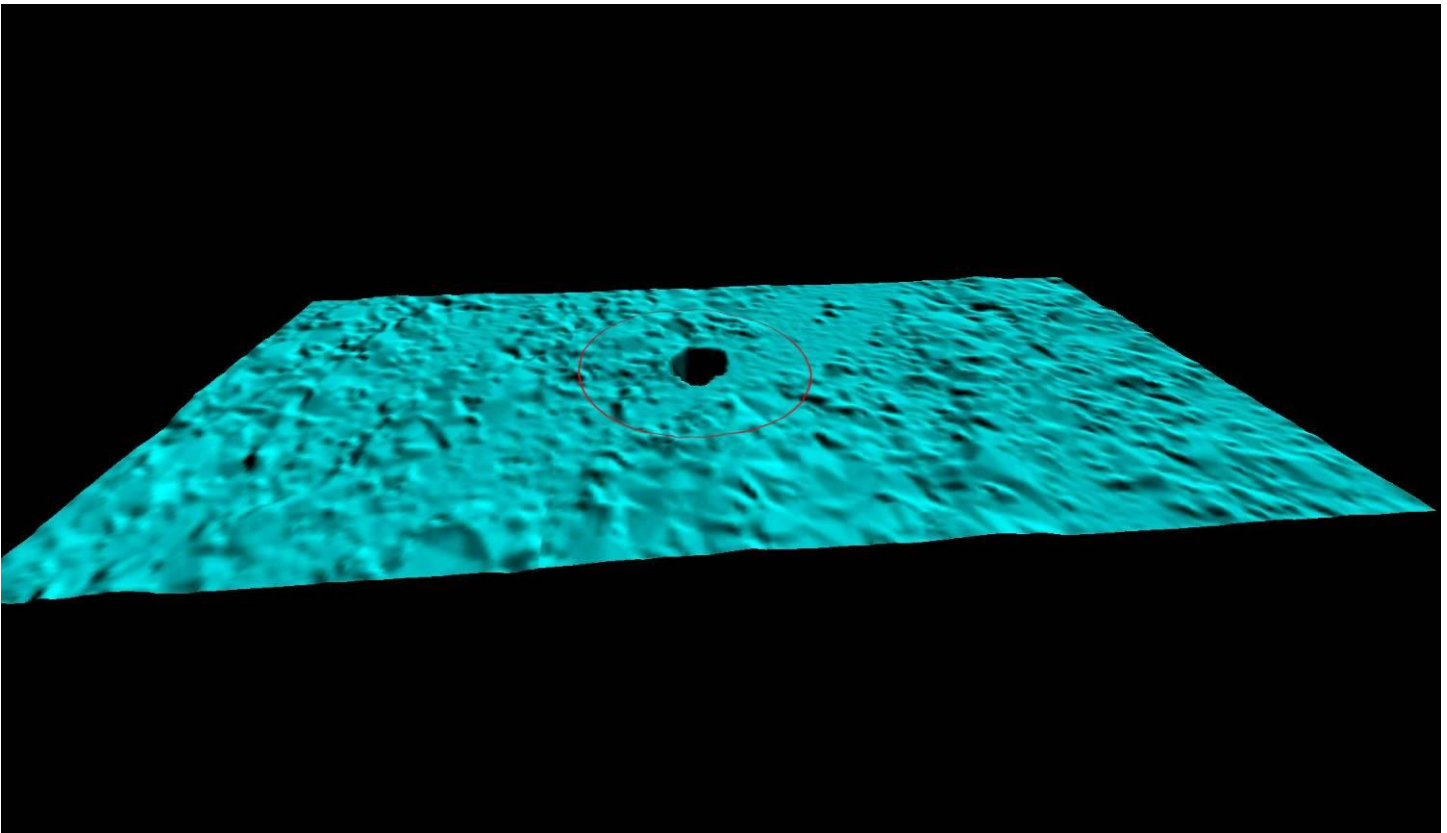




Iowa 15 missing data 3 (not fixed area flooded)

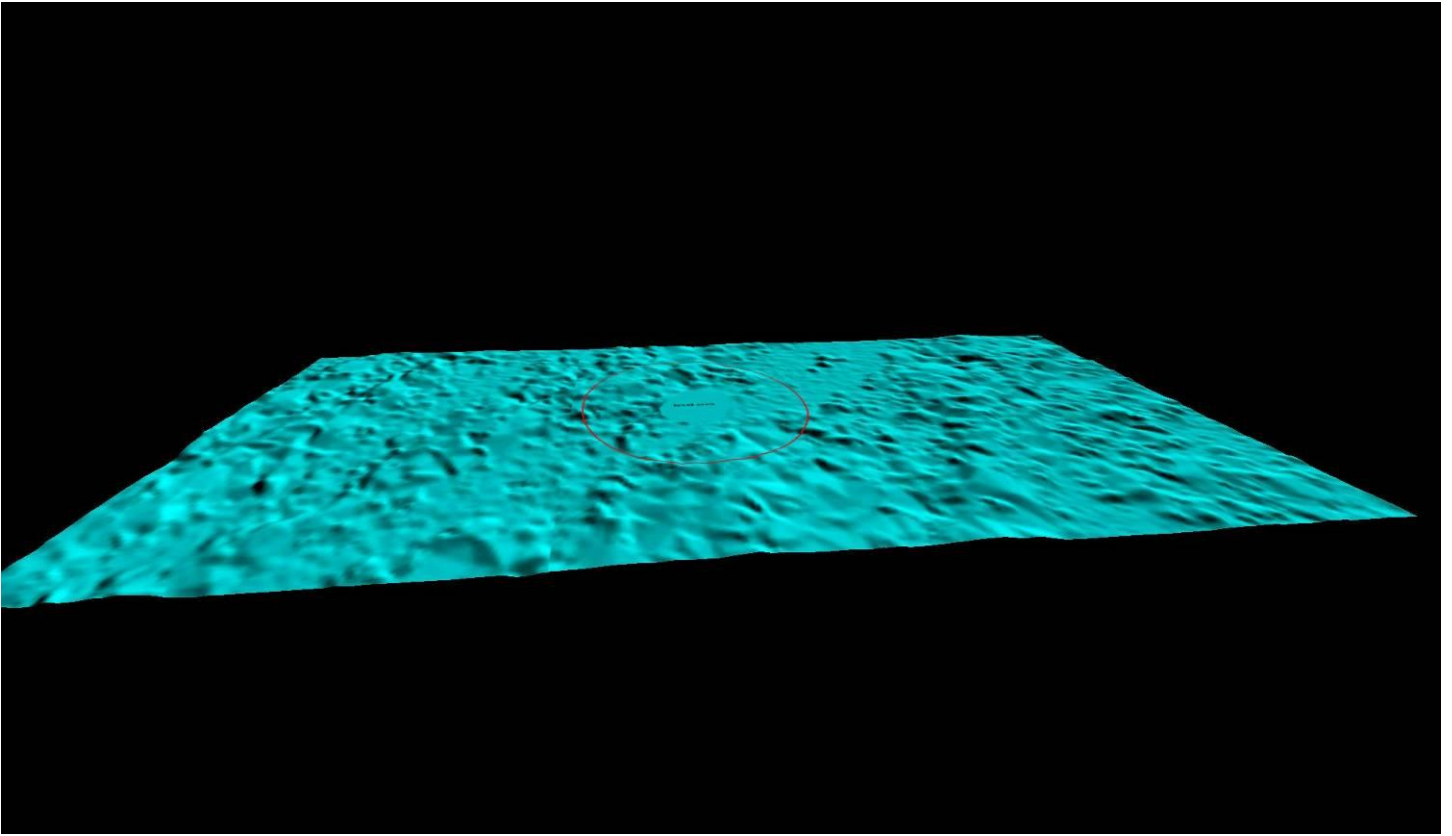


Level area

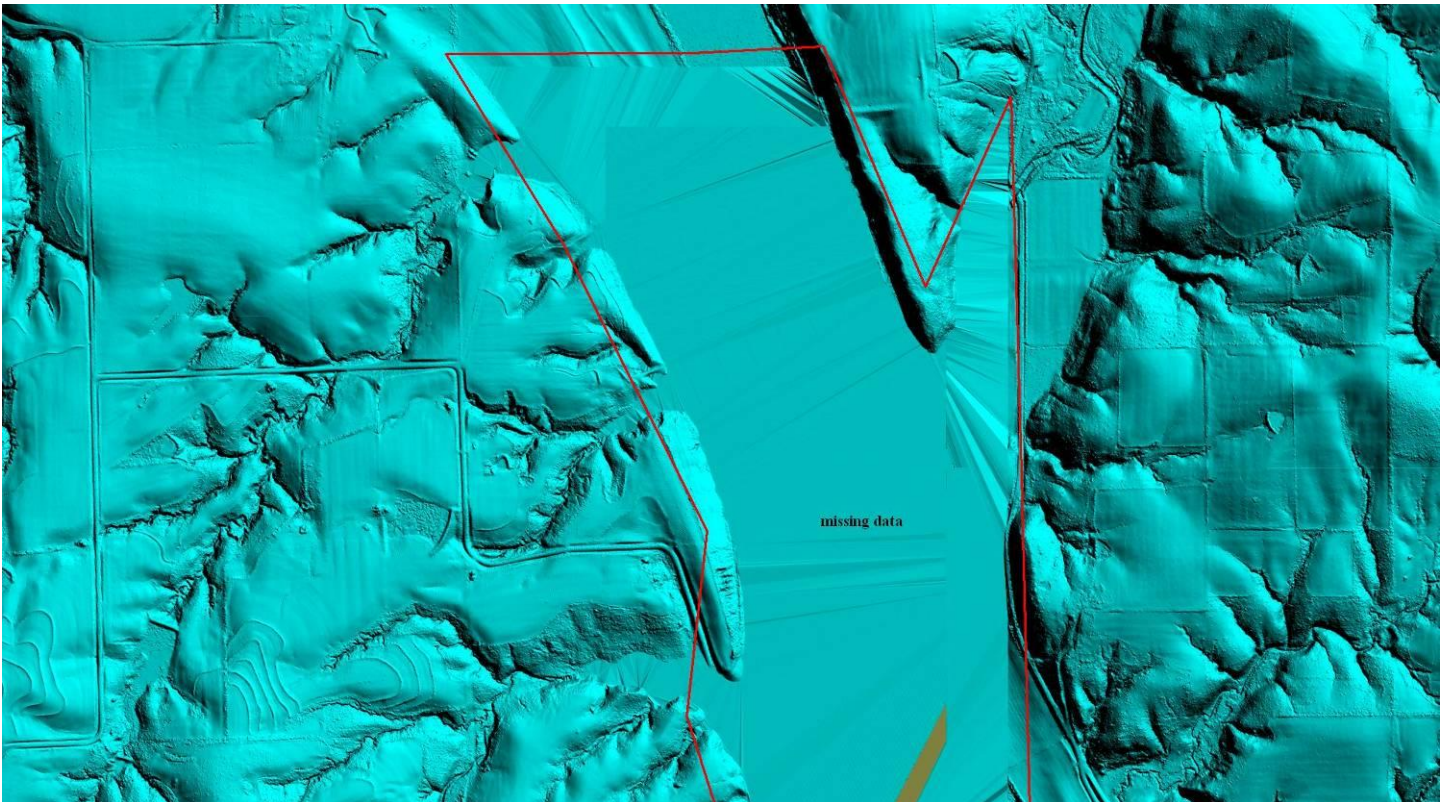




Level area (Fixed)

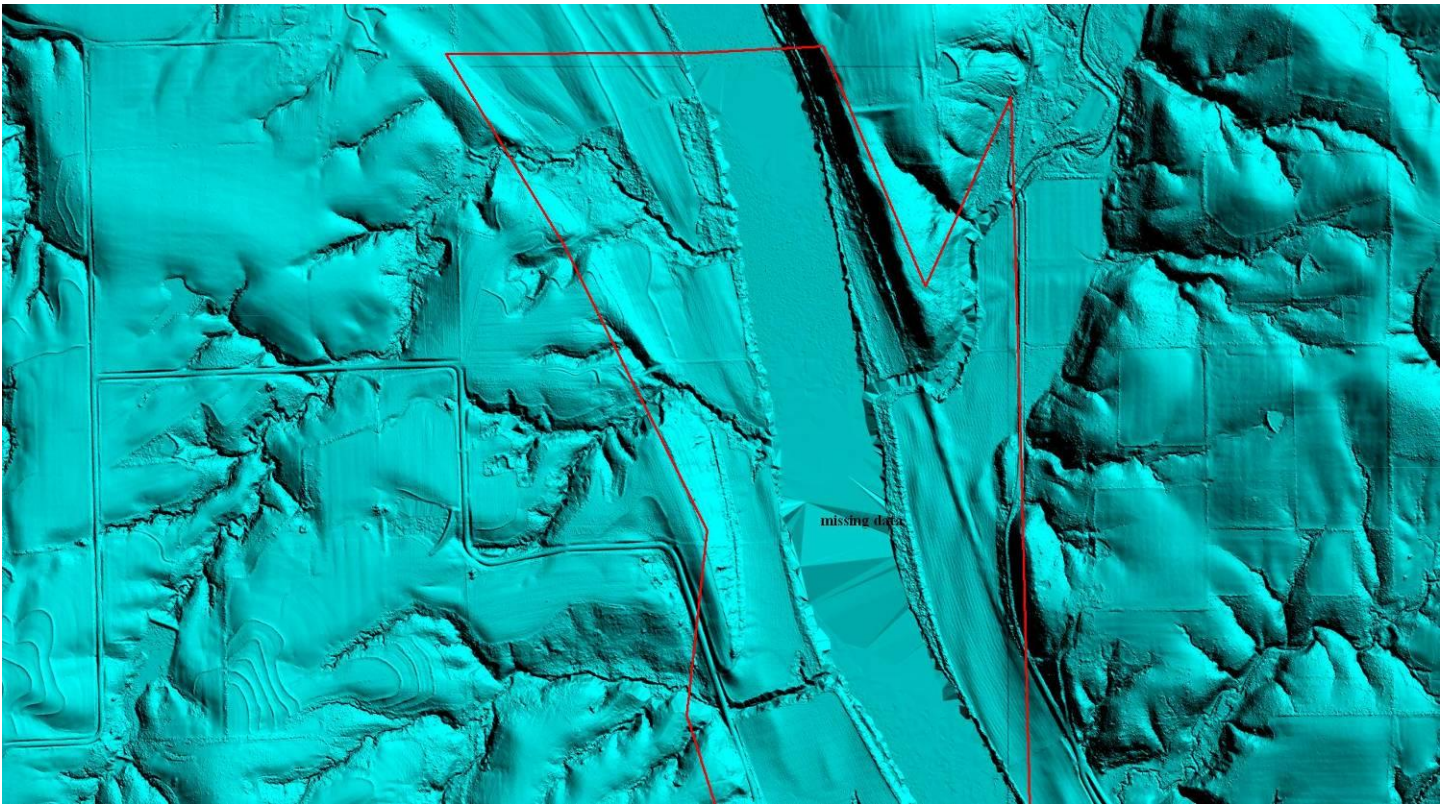


Missing data 1

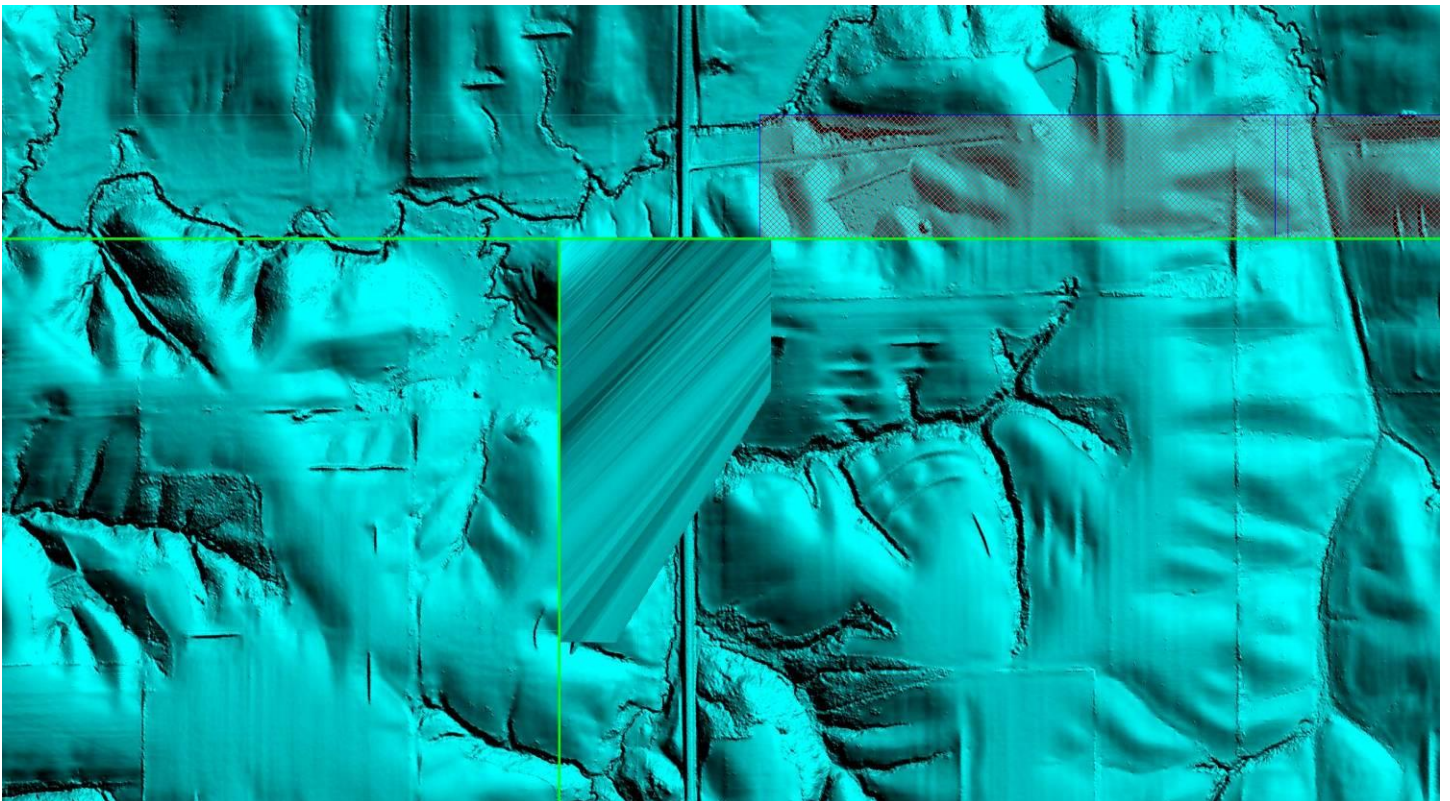




Missing data 1(Fixed)

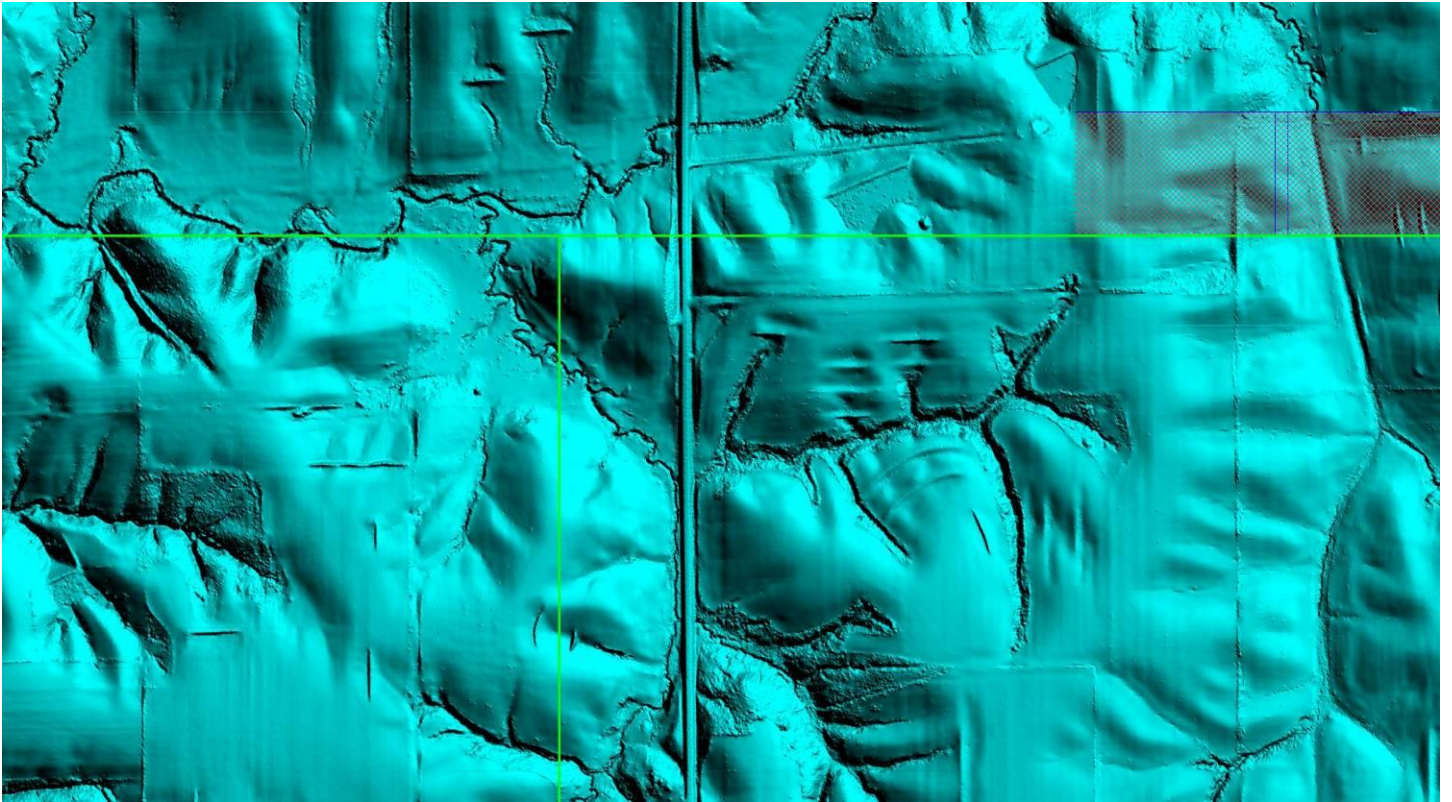


Missing data 2

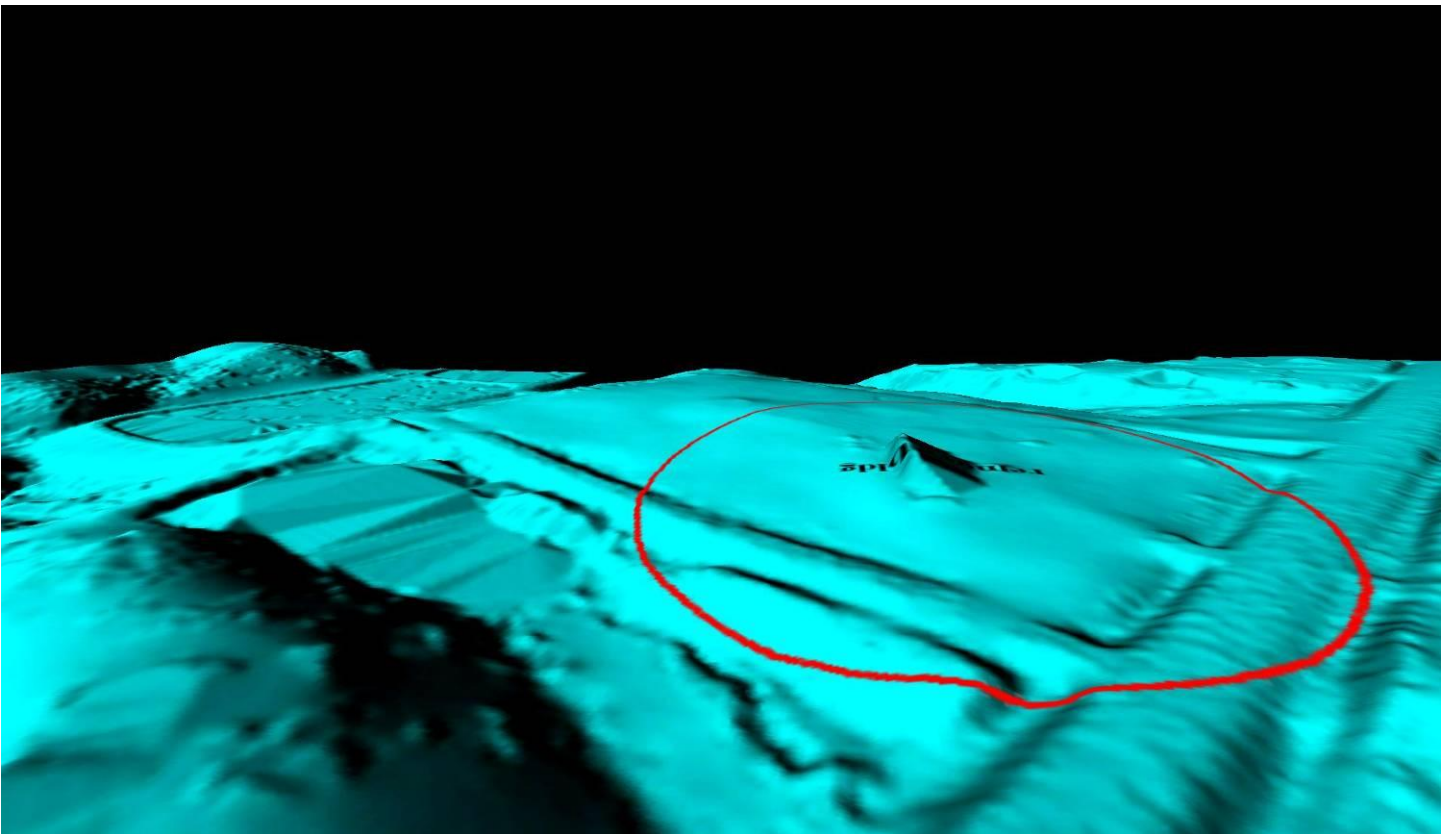




Missing data 2 (Fixed)

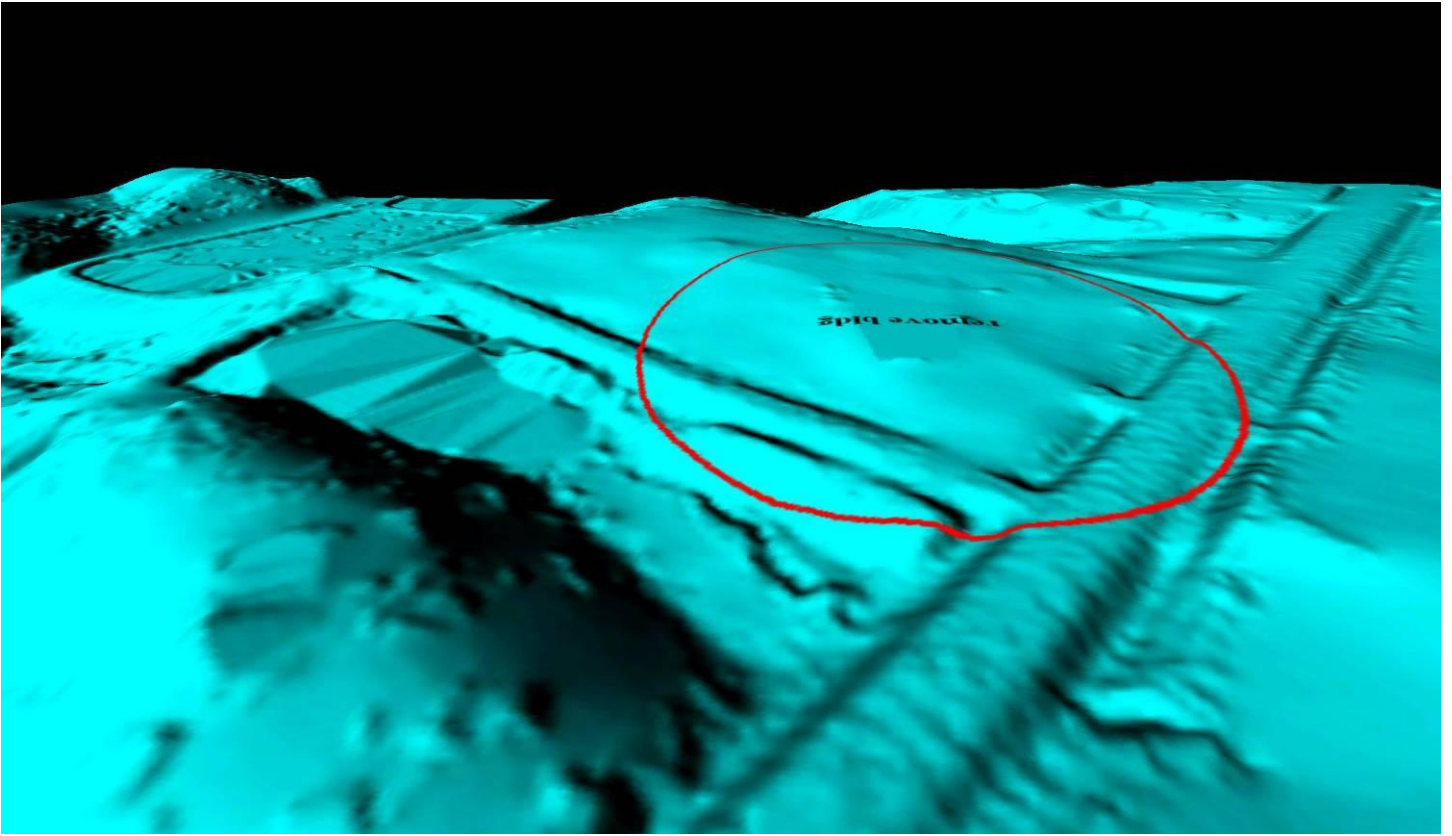


Remove bldg

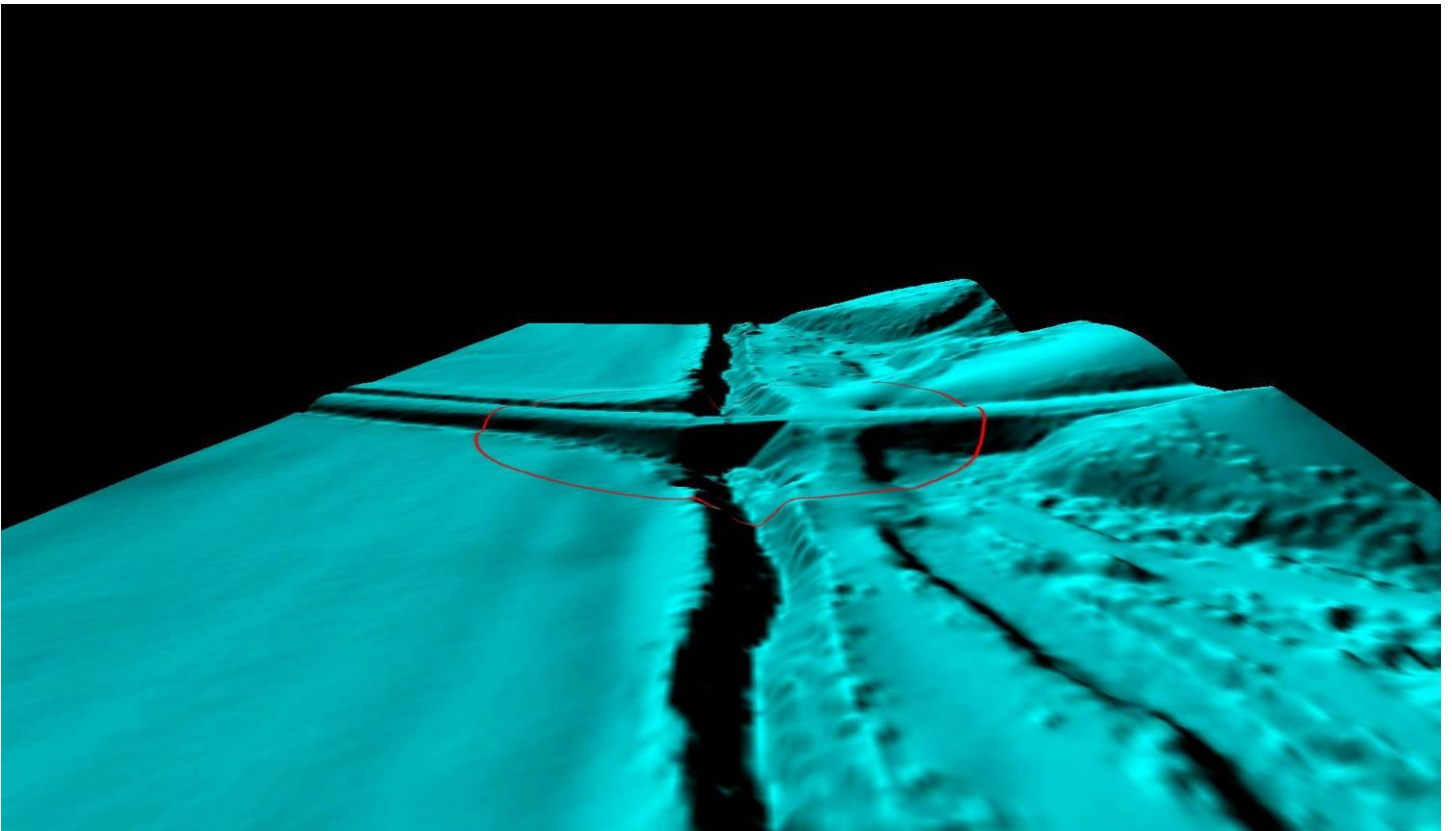




Remove bldg (Fixed)

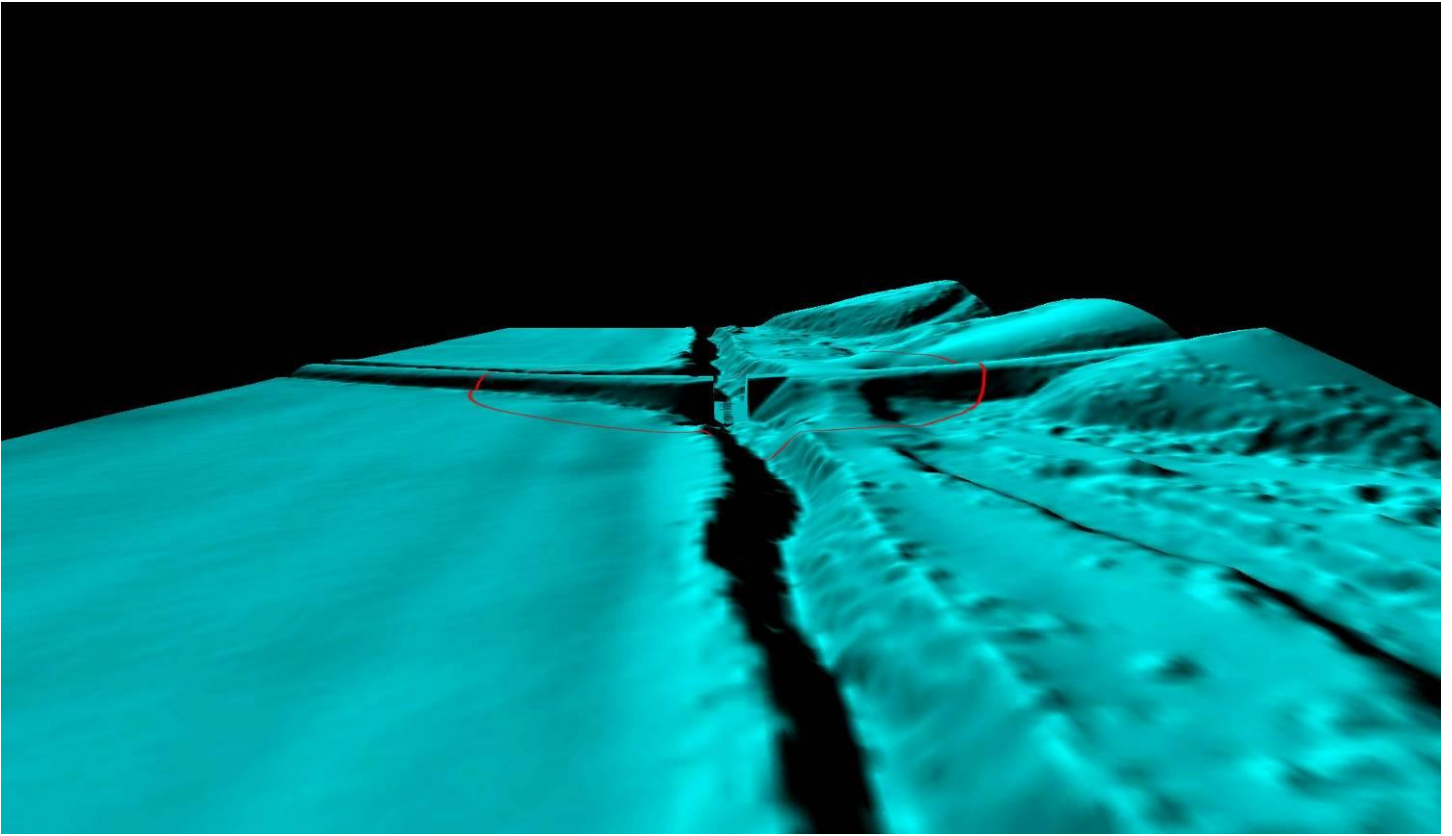


Remove bridge

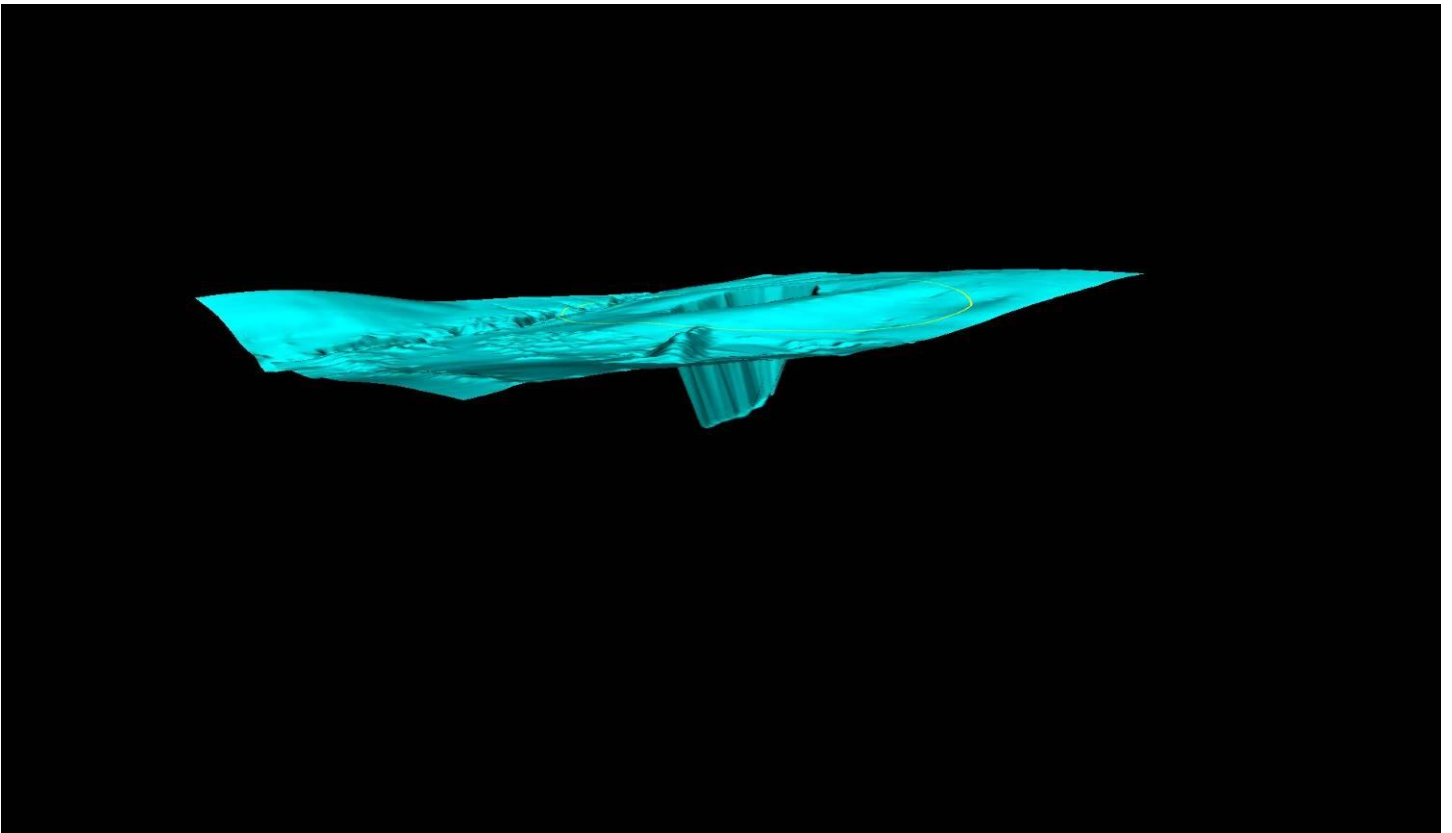




Remove bridge (Fixed)



Iowa 03 Elevation error





Iowa 03 Elevation error (Fixed)

