

High Resolution Elevation QA Review Report

Project: Iowa SW 01-14 Lidar 2010 Contract ID:

Liaison: Bob Lermen Partner(s): Contractor: Sanborn Map Co. Inc

Data Delivery Date: 02/10/2009, 03/1 Date Data Reviewed: 05/04/2010 - 05

Reviewer: Rusty Grout / Eric Jaramill Total Square Miles Reviewed: 4299.9 sq. mi

Elevation Type: LIDAR Format: xyz Grid Spacing: 1 meter Tile size: 1000 x 1000

Projection: UTM Zone: 15 Datum: NAD83 Units: Meters

Licensing: Public Domain Metadata: Project Level Acquisition Date: 04/07/2007 thru

Materials Received:

Bare earth ASCII .xyz files
Las point cloud .xyz files
Metadata
Shape files

Vertical Accuracy Test Performed: Yes Test Point Source: Contractor RMSE: 0.316 meters

Vertical Accuracy Test Notes:

A vertical check was performed on Iowa SW 01-14 bare earth data. See the Iowa Statewide Lidar Project Vertical Accuracy Report sent with the final .img data

QA Review Summary:

All of Iowa SW 01-14 one meter Lidar data was reviewed. This data was brought into Global Mapper as .xyz point files. Las point files were created from the .xyz files then gridded to 1 meter data for QA/QC. Errors found throughout this project and fixed in Global Mapper are (bridges not taken out, areas need to be leveled, spiking, bldgs need to be removed and missing data, (errors found on this project and fixed by the contractor are missing data see examples below) . This data was regridded to 1 meter .img files. This data is accepted and will be archived.

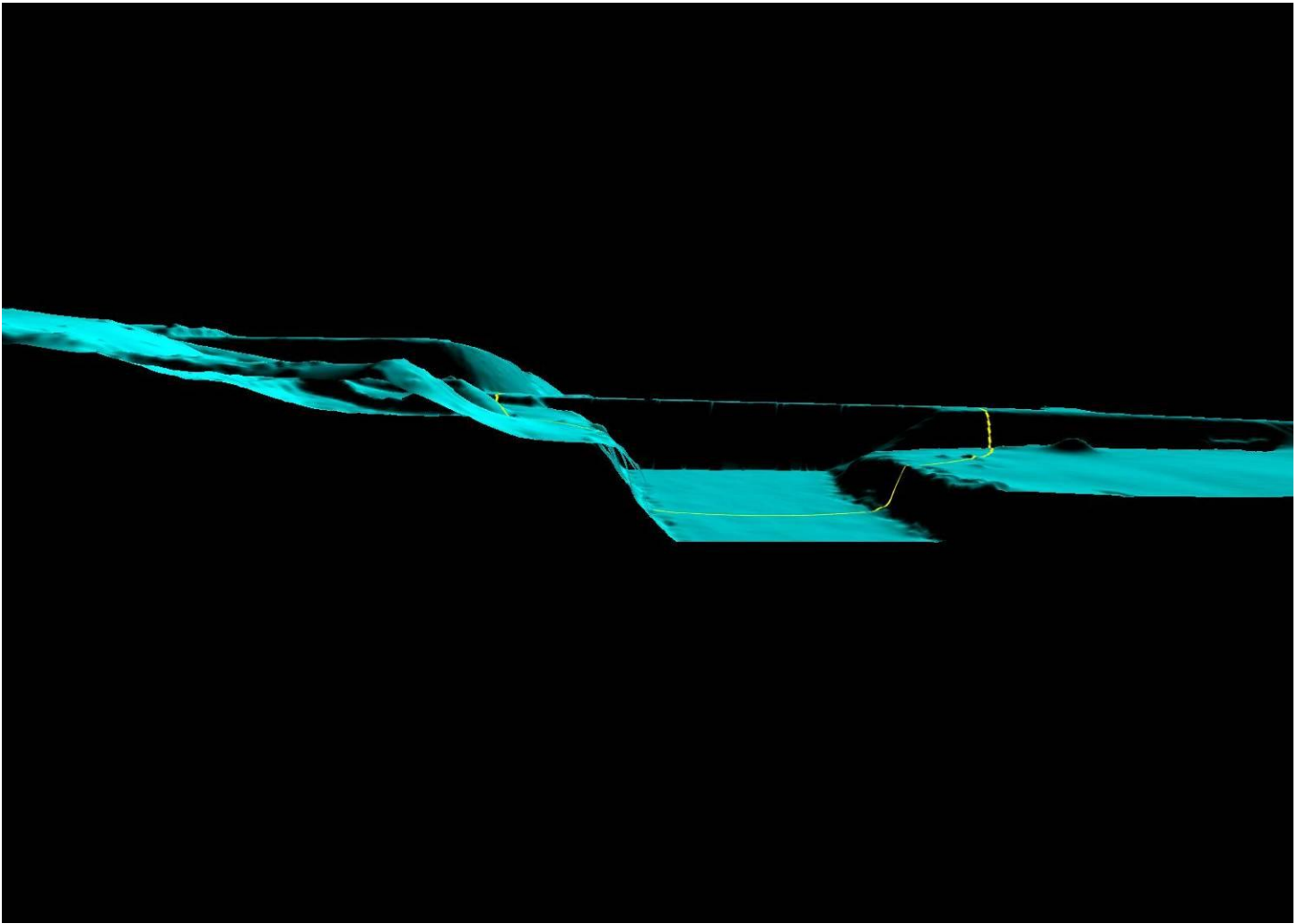
See error JPEG examples and documents attached below.

Conclusions: 1. 89% of artifacts removed
2. 90% of vegetation removed
3. 95% of buildings removed

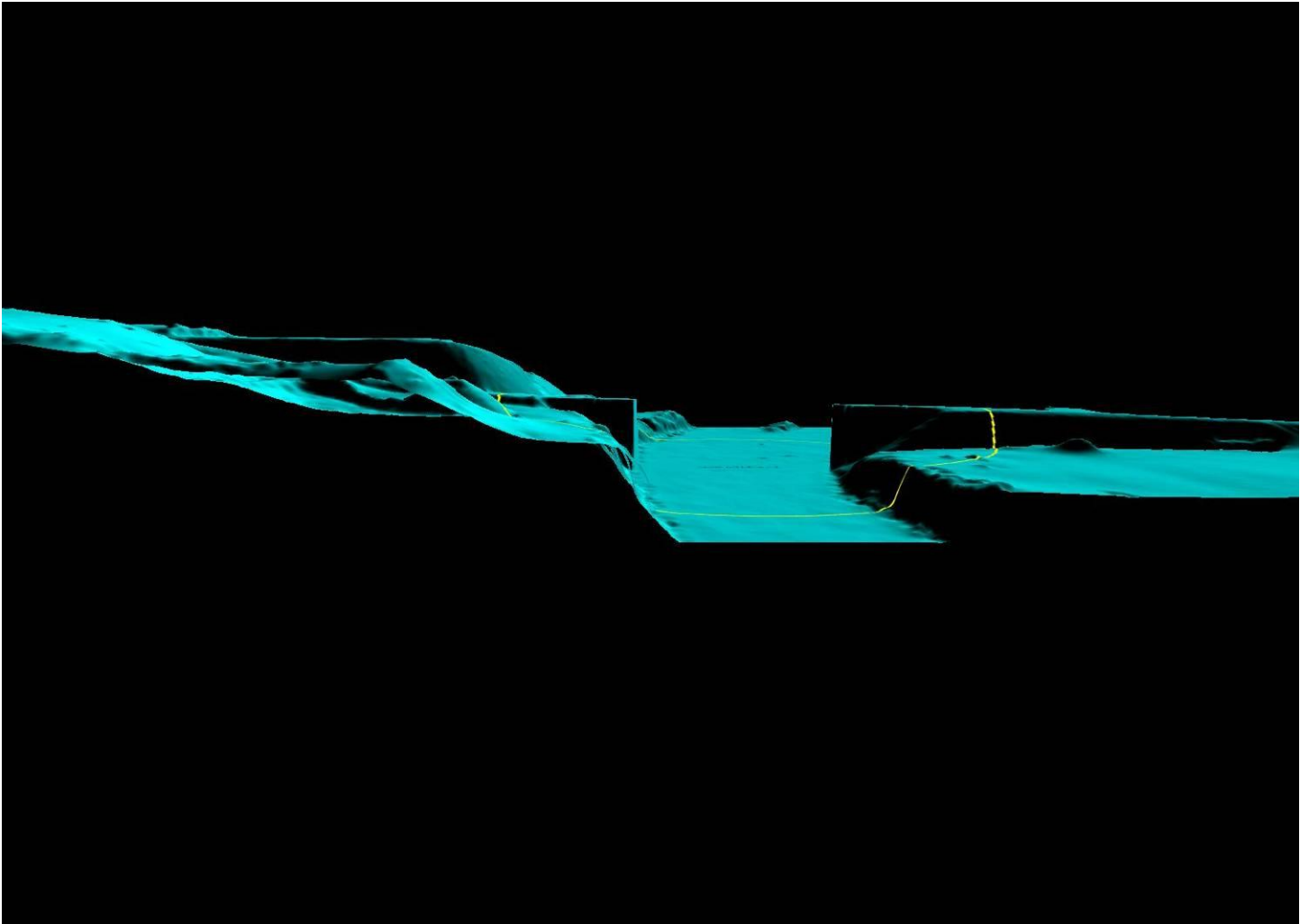
Iowa SW 01-14



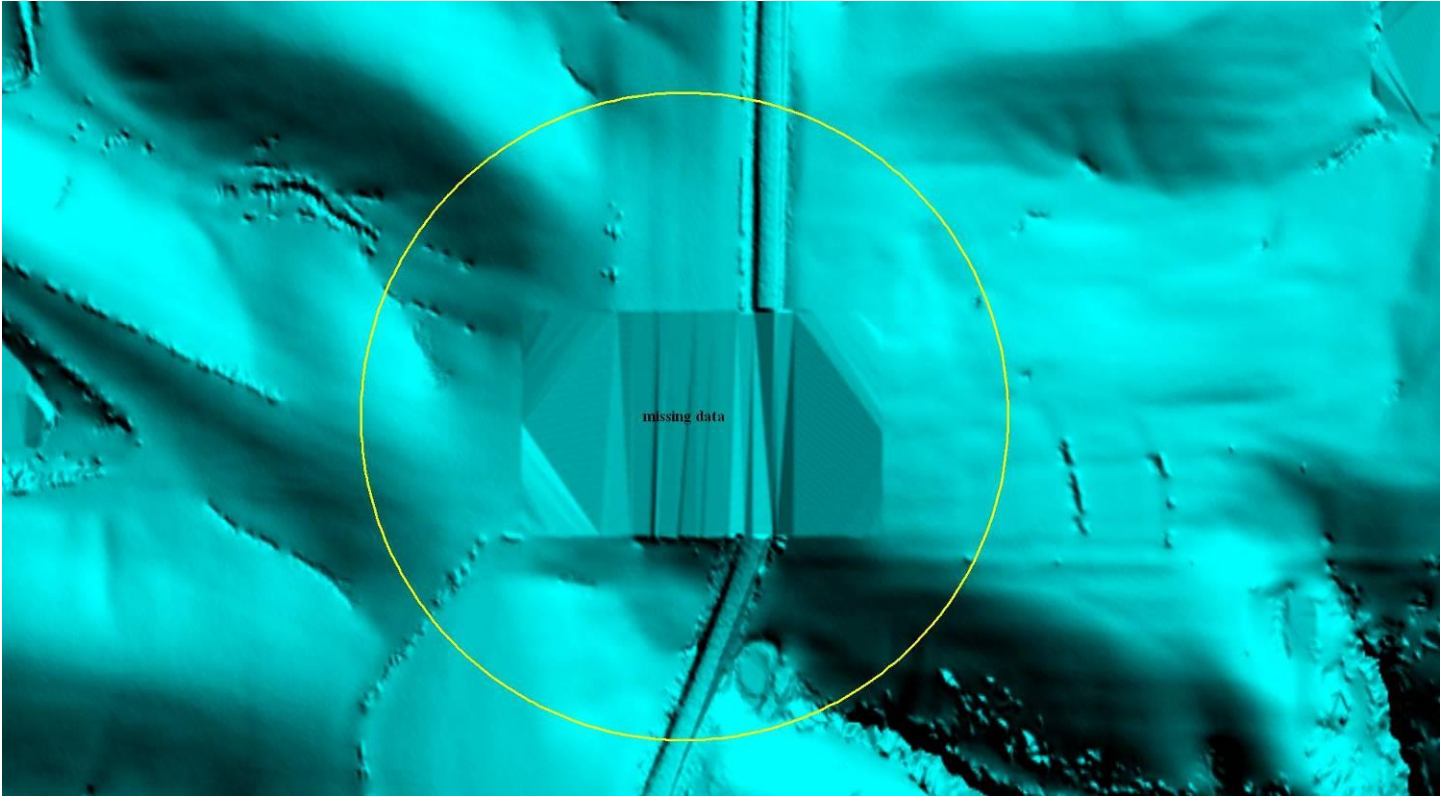
Bridge not removed 1



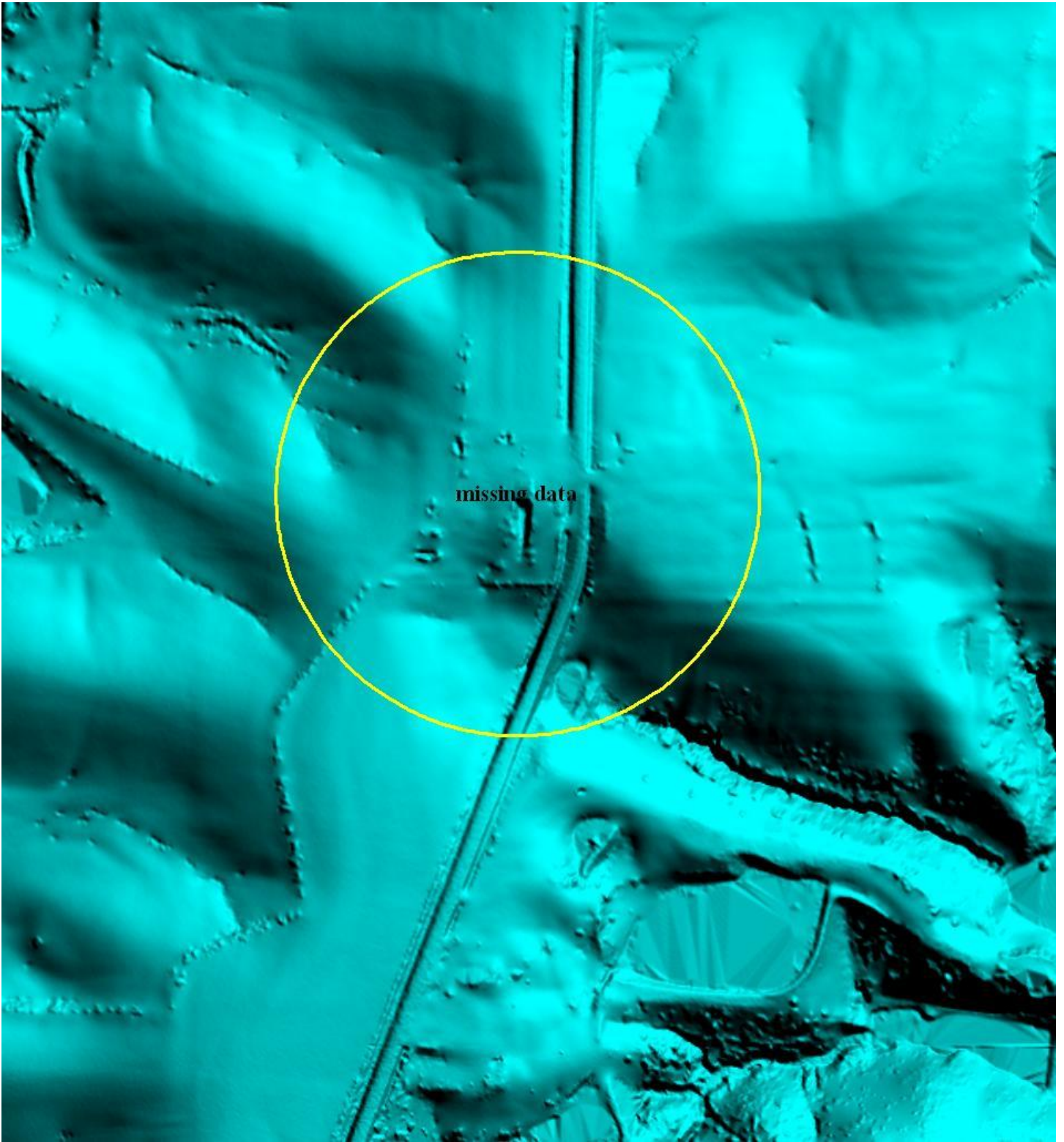
Bridge not removed 1 (Fixed)



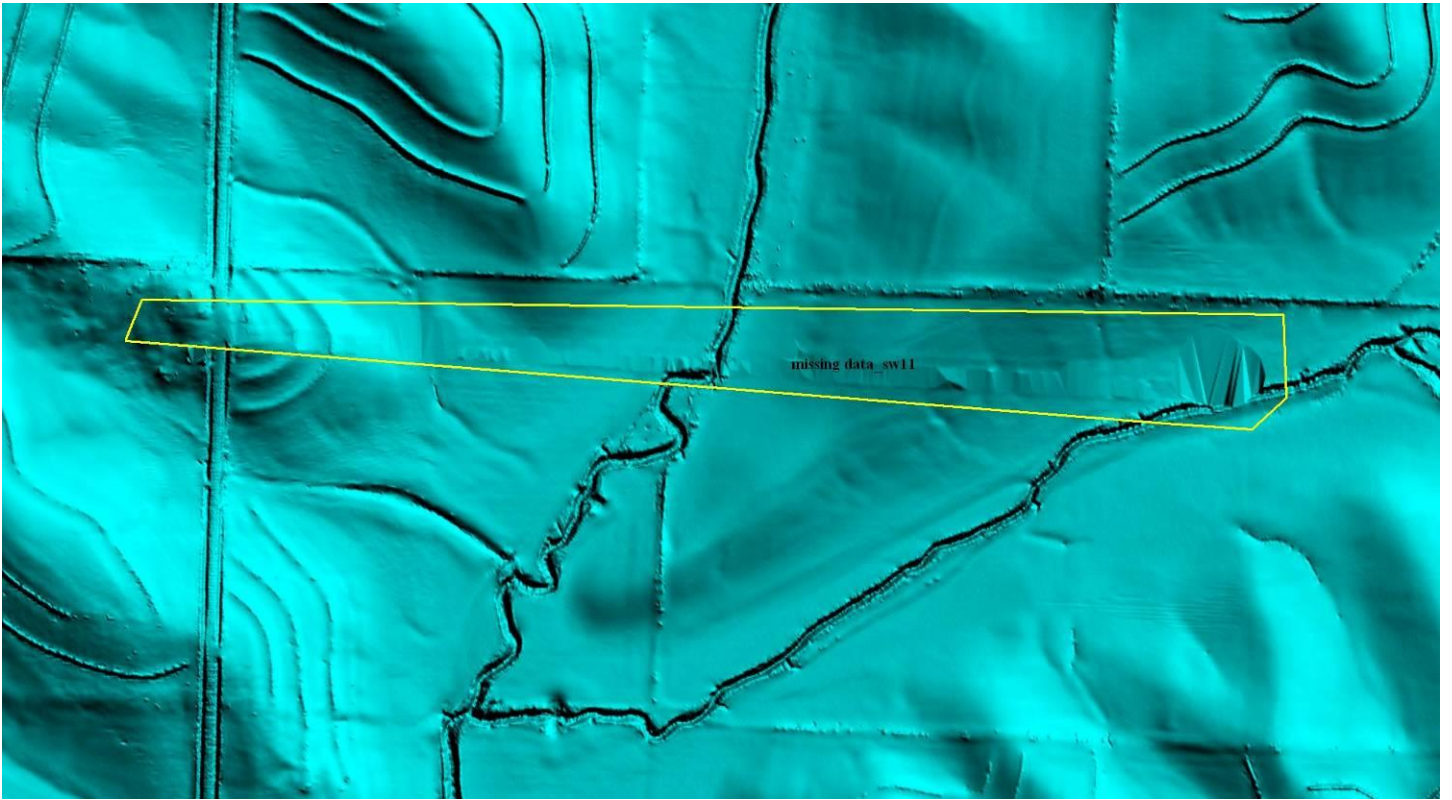
Missing data SW 10



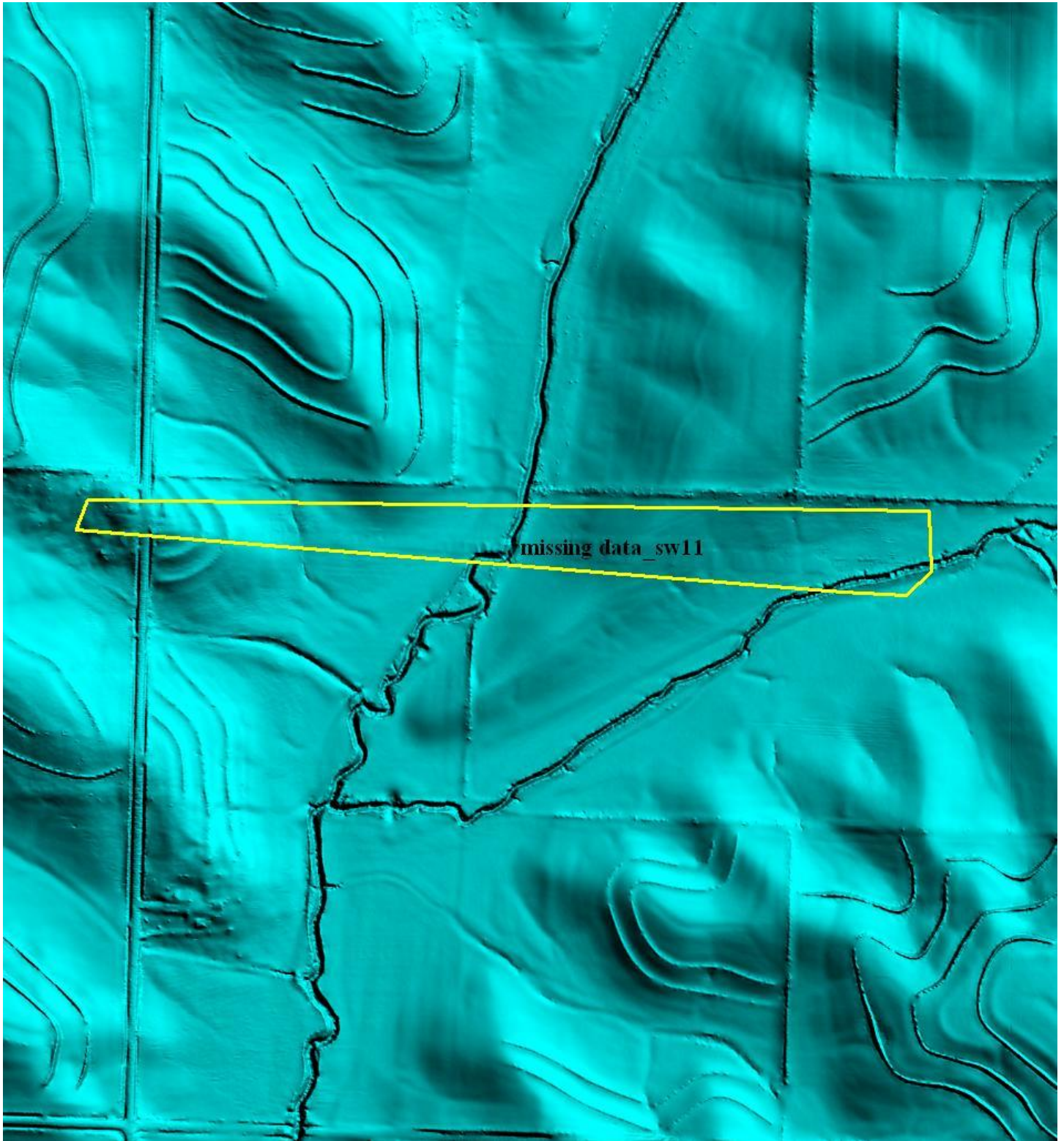
Missing data SW 10 (Fixed)



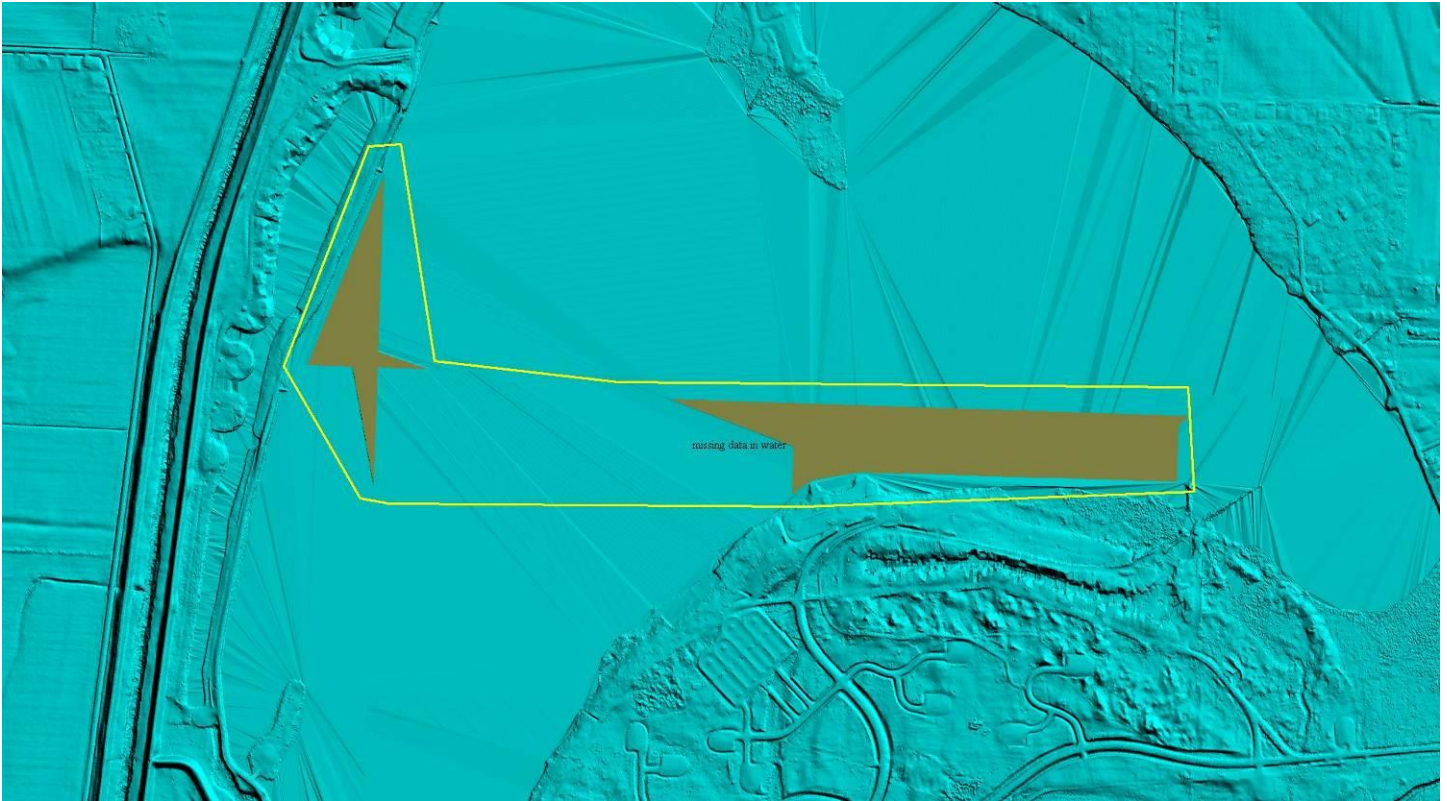
Missing data SW 11



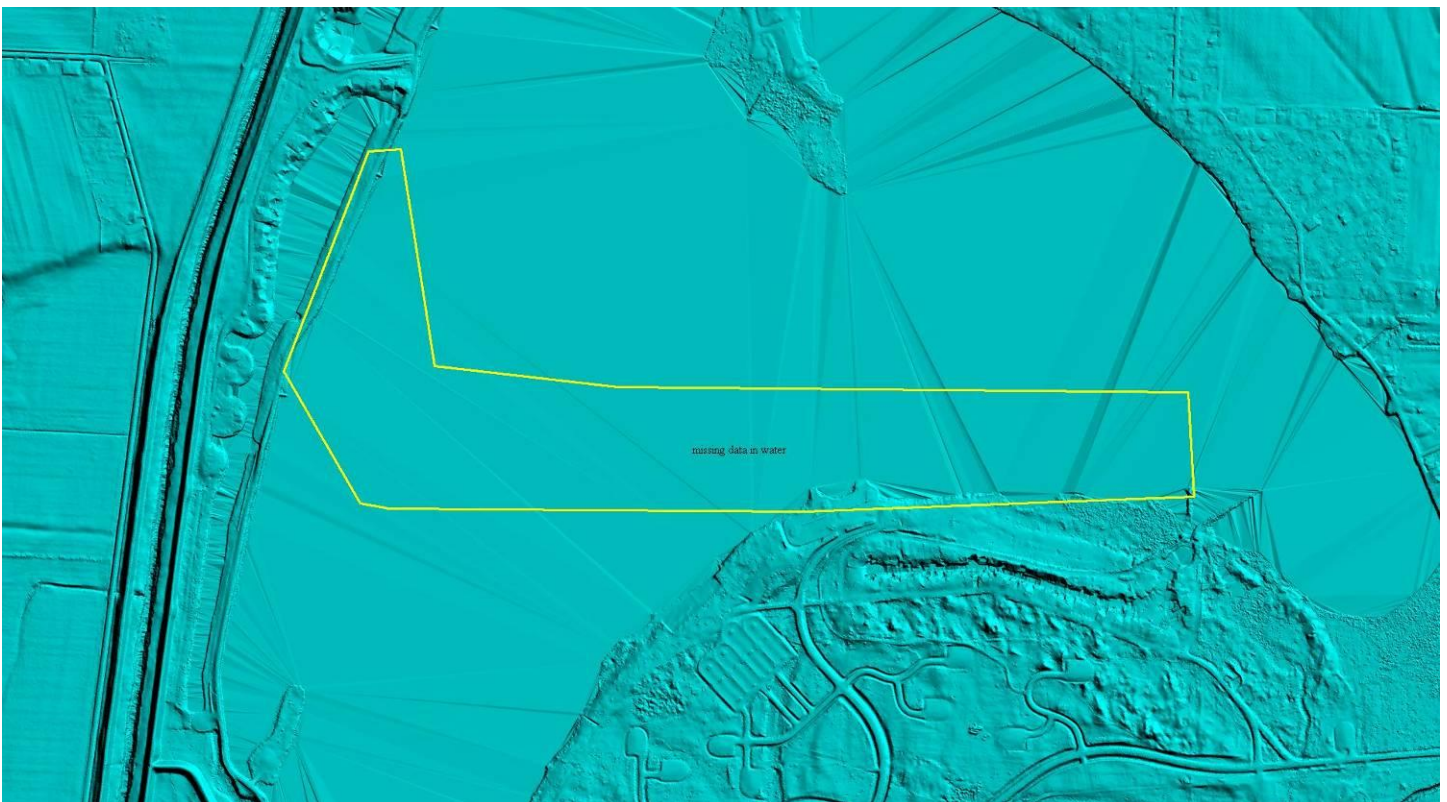
Missing data SW 11 (Fixed)



Missing data in water



Missing data in water (Fixed)



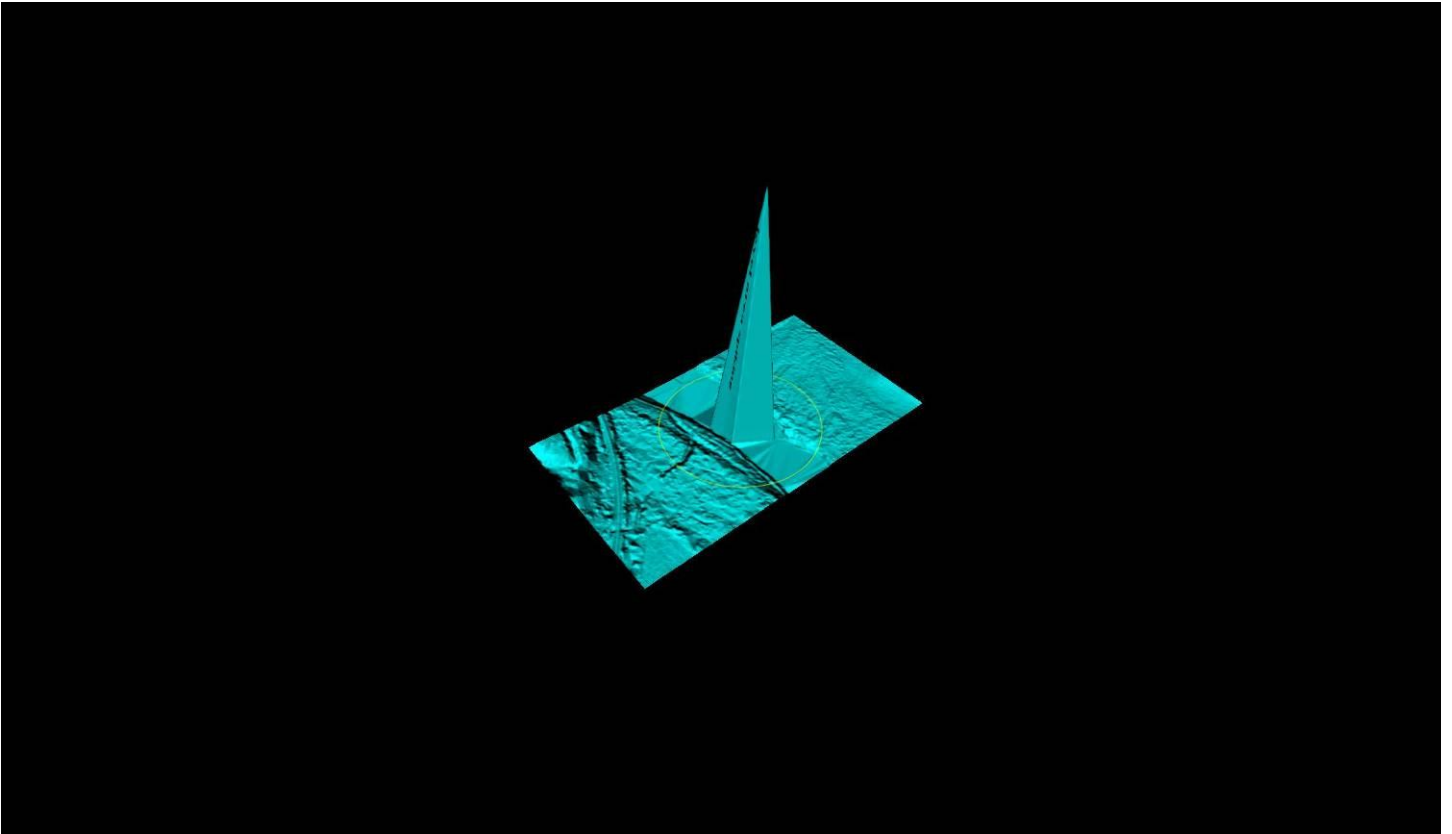
Level bldgs



Level bldgs (Fixed)



Level area spiking



Level area spiking (Fixed)

