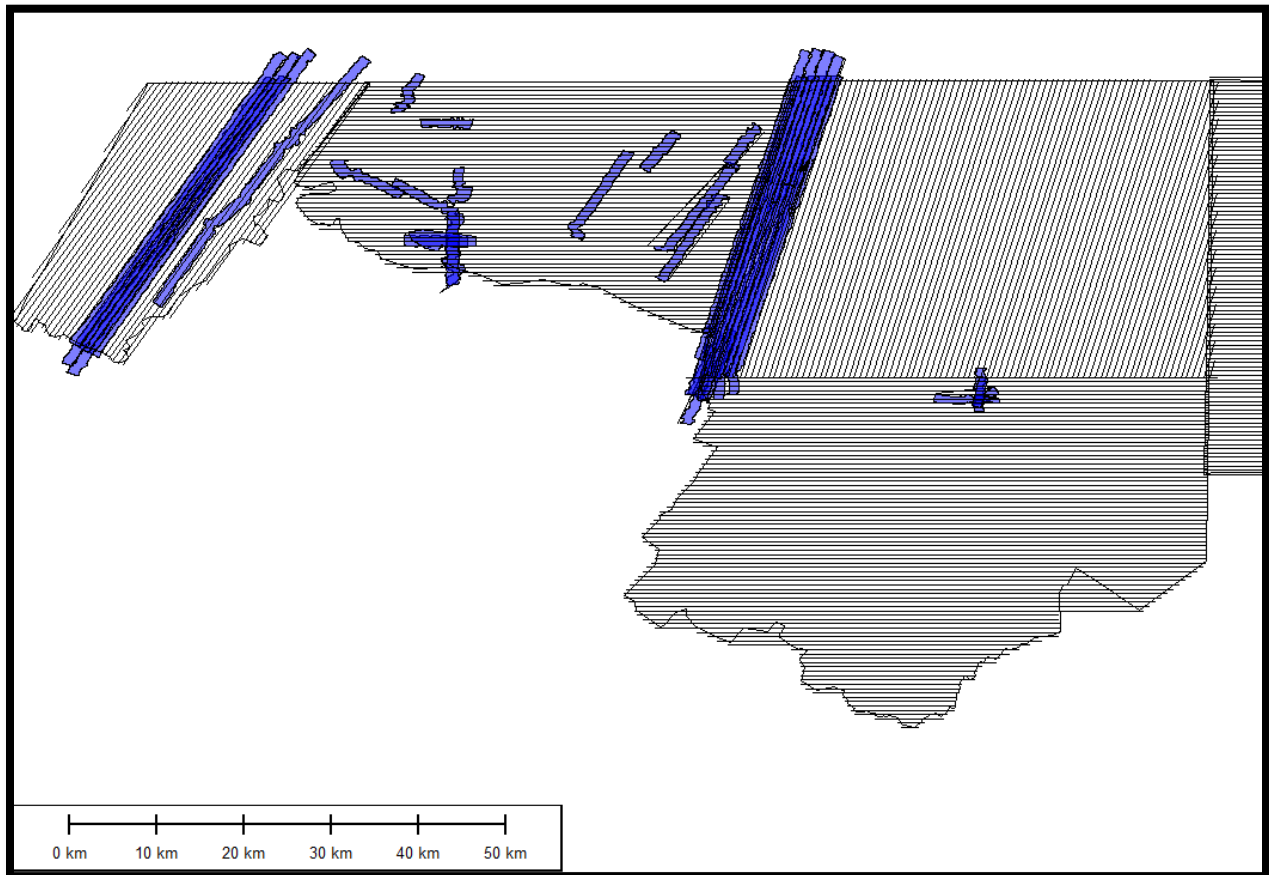


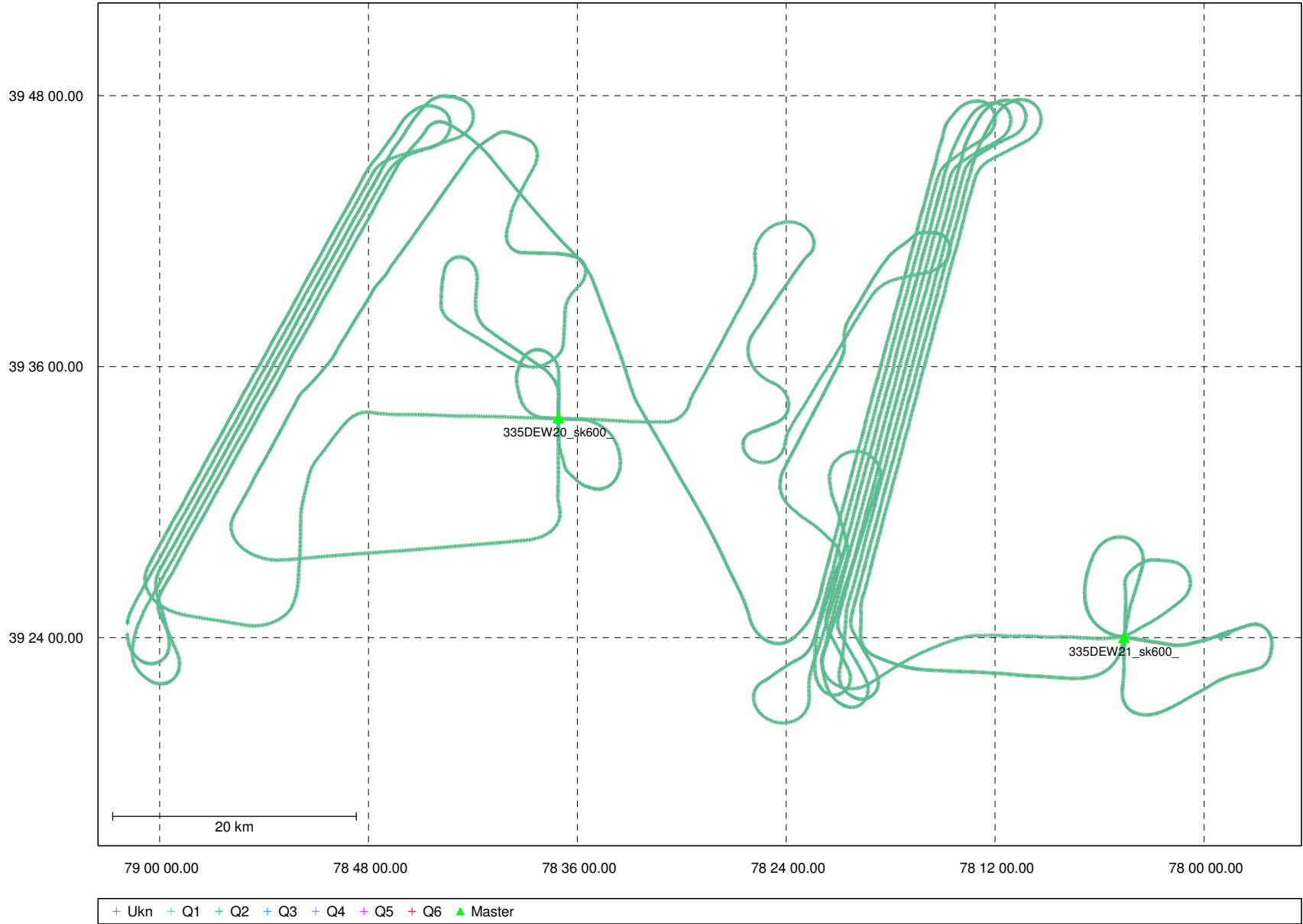
**Mission: o112066a**

**March 06, 2012**



### Combined - Map Run (3)

Geographic, DMS



Processing Summary Information

Program: GrafNav  
Version: 7.80.2517  
Project: L:\335DEW11  
USGS\_MD\_VA\_lidar\2\_Operations\6\_Missions\o112066a\3\_Processed\GPS\GPS\o112066a.cfg

Solution Type: Combined Fwd/Rev

Number of Epochs:

Total in GPB file: 185846  
No processed position: 167273  
Missing Fwd or Rev: 3  
With bad C/A code: 0  
With bad L1 Phase: 0

Measurement RMS Values:

L1 Phase: 0.0186 (m)  
C/A Code: 0.64 (m)  
L1 Doppler: 0.033 (m/s)

Fwd/Rev Separation RMS Values:

East: 0.013 (m)  
North: 0.021 (m)  
Height: 0.049 (m)

Fwd/Rev Sep. RMS for 25%-75% weighting (18513 occurrences):

East: 0.008 (m)  
North: 0.016 (m)  
Height: 0.034 (m)

Quality Number Percentages:

Q 1: 99.7 %  
Q 2: 0.3 %  
Q 3: 0.0 %  
Q 4: 0.0 %  
Q 5: 0.0 %  
Q 6: 0.0 %

Position Standard Deviation Percentages:

0.00 - 0.10 m: 100.0 %  
0.10 - 0.30 m: 0.0 %  
0.30 - 1.00 m: 0.0 %  
1.00 - 5.00 m: 0.0 %  
5.00 m + over: 0.0 %

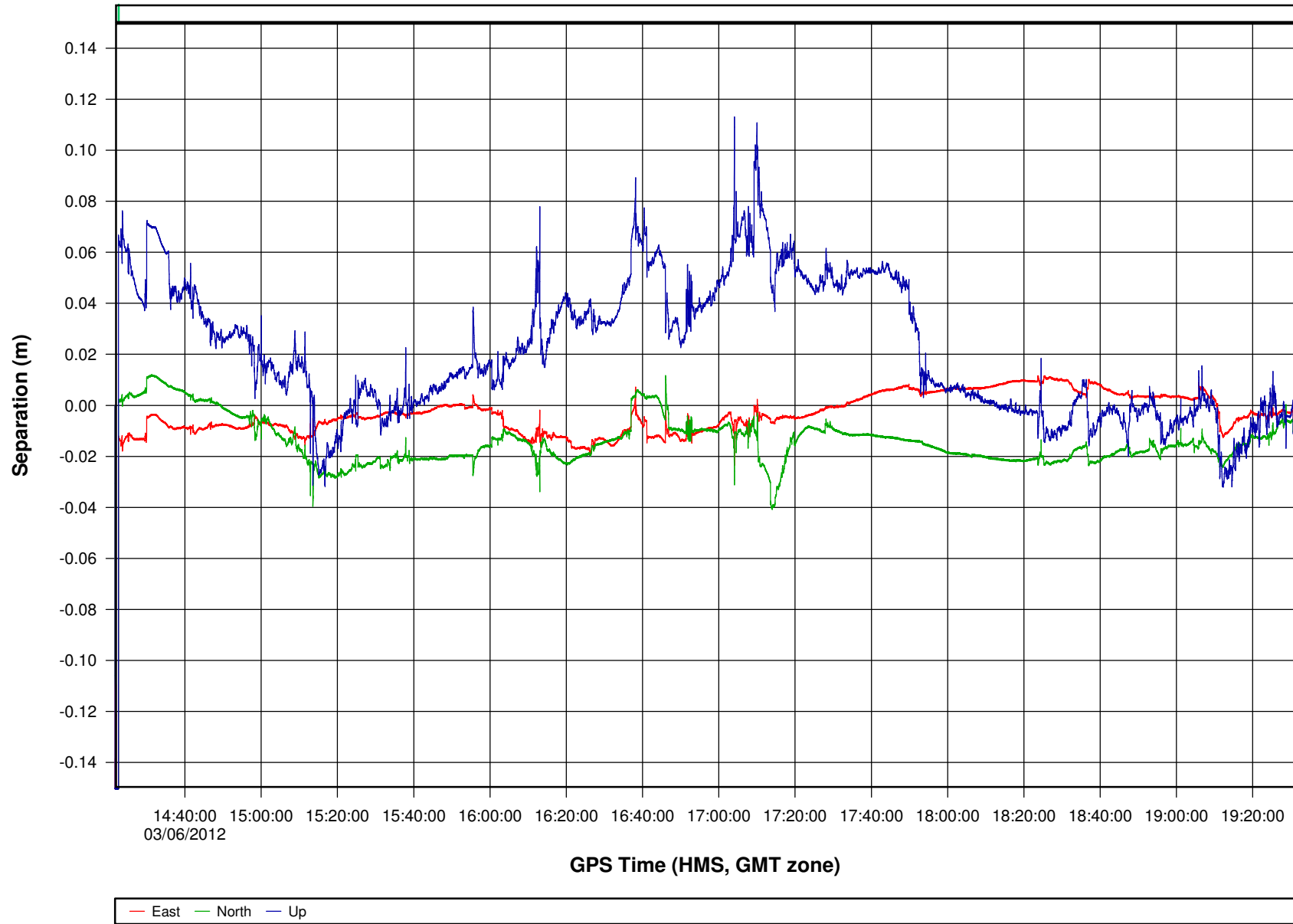
Percentages of epochs with DD\_DOP over 10.00:

DOP over Tol: 0.0 %

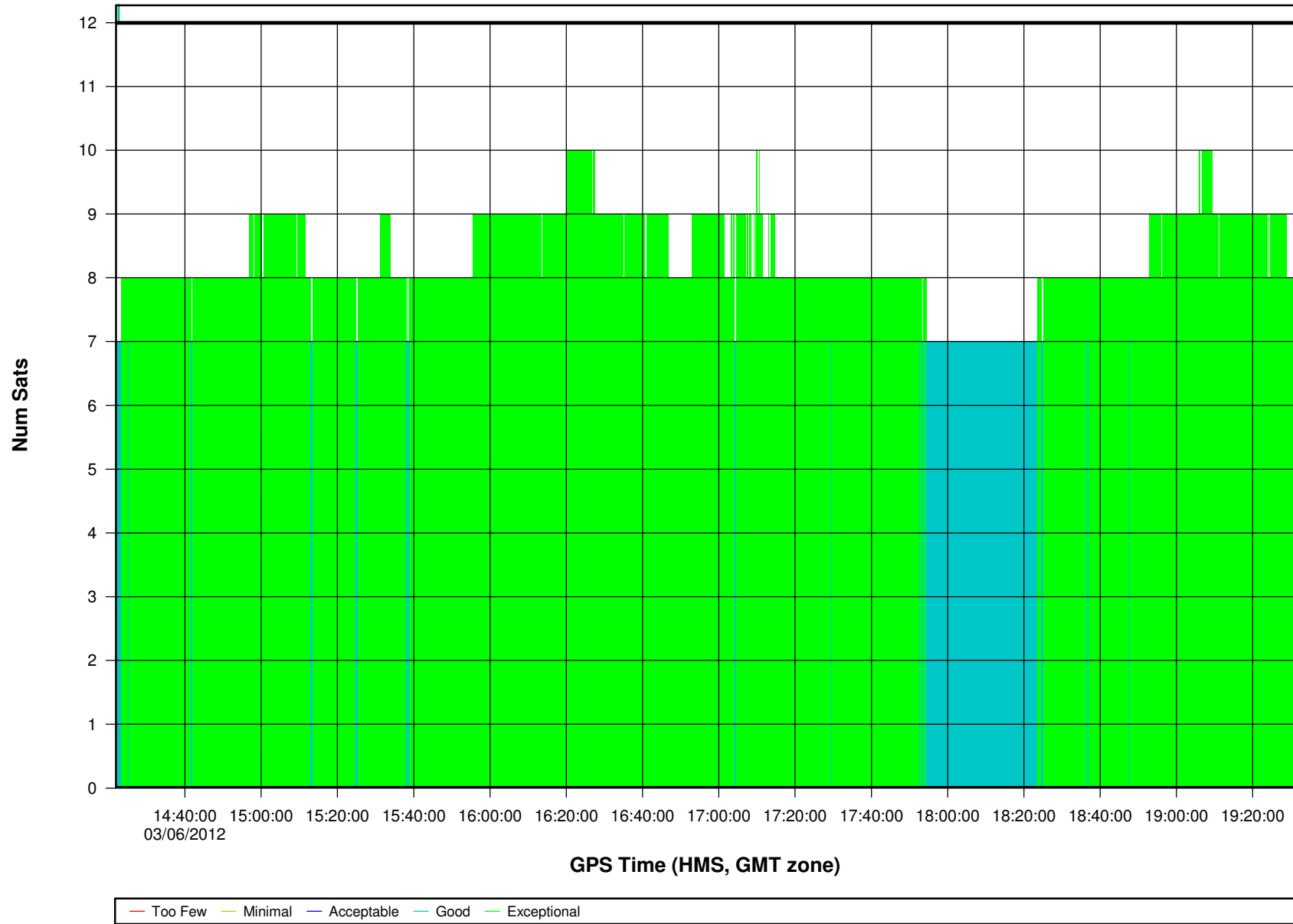
Baseline Distances:

Maximum: 56.408 (km)  
Minimum: 1.305 (km)  
Average: 26.453 (km)  
First Epoch: 30.228 (km)  
Last Epoch: 30.086 (km)

### o112066a [Combined] - Forward/Reverse or Combined Separation Plot



### o112066a [Combined] - Number of Satellites Bar Plot



**o112066a [Combined] - PDOP, HDOP, VDOP Plots**

