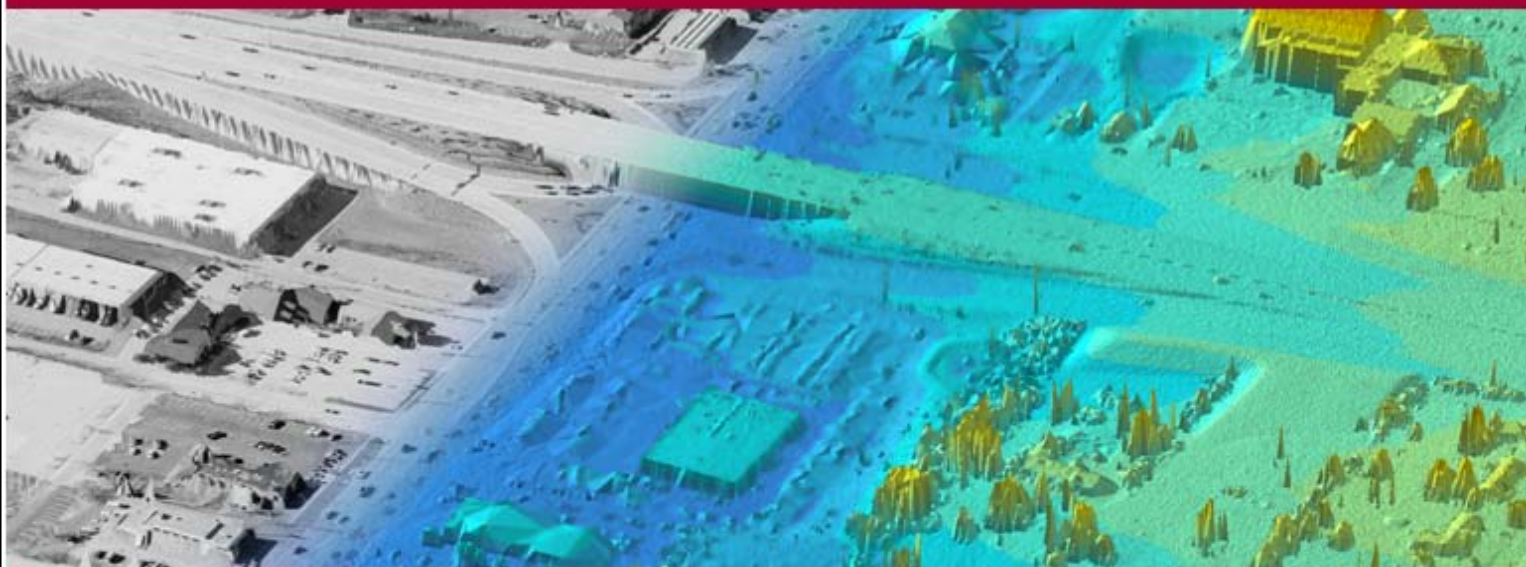


LiDAR ACCURACY REPORT

Project: Meramec Basin LiDAR Project
Report Area: Jefferson, Ste Genevieve & St. Francois County, MO
Delivery Order No.: 0001
Contract No.: W912P9-10-0538
Date: 2-August-2011
Submitted by: Wade Williams, Project Manager



US Army Corps of Engineers, St. Louis District

Project Overview

The St. Louis District of the United States Army Corps of Engineers (USACE) contracted with Surdex Corporation in May of 2011 to collect LiDAR elevation data over Jefferson, Ste. Genevieve & St. Francois County, MO as part of the Meramec Basin Lidar Project. The post processed elevation data was to meet USGS Base Lidar "General" Specification, Version 13 & FEMA Procedure Memorandum 61 Guidelines for "High" Specifications. The vertical accuracy of the processed areas will meet 18.5 centimeters RMSE.

Project Area

This report covers the collection and processing of LiDAR elevation data over Ste. Genevieve County MO. The project limits are presented in the graphics below. The project area consisted of approximately 1,155 square miles of elevation data.

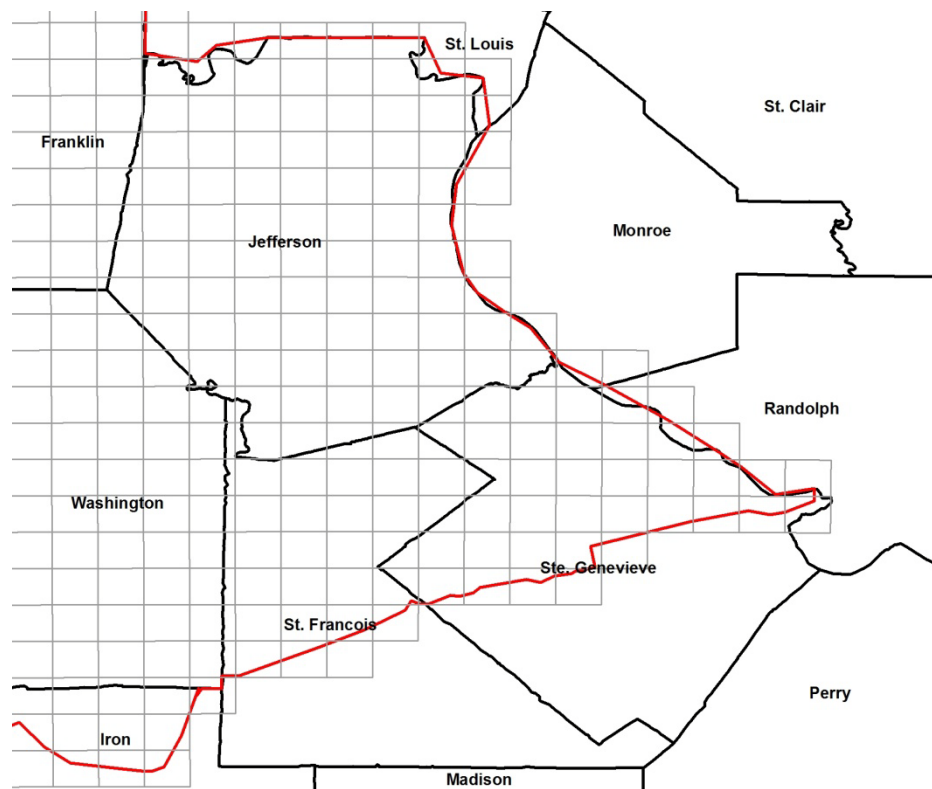


Figure 1 Jefferson, Ste. Genevieve & St. Francois Co. Project Area

LiDAR Data Collection Scenario

The LiDAR elevation data for this project was collected with a Leica ALS-50II MPIA aerial LiDAR sensor system. The project design called for acquisition of LiDAR data with lines flown north-south. The nominal collection scenario called for the acquisition of nominal point spacing of 1 meter on the ground.

LiDAR Evaluation

The field survey for this project consisted of a combination of primary control (41) and LiDAR check points (67). The graphic below presents these points on the project area map.

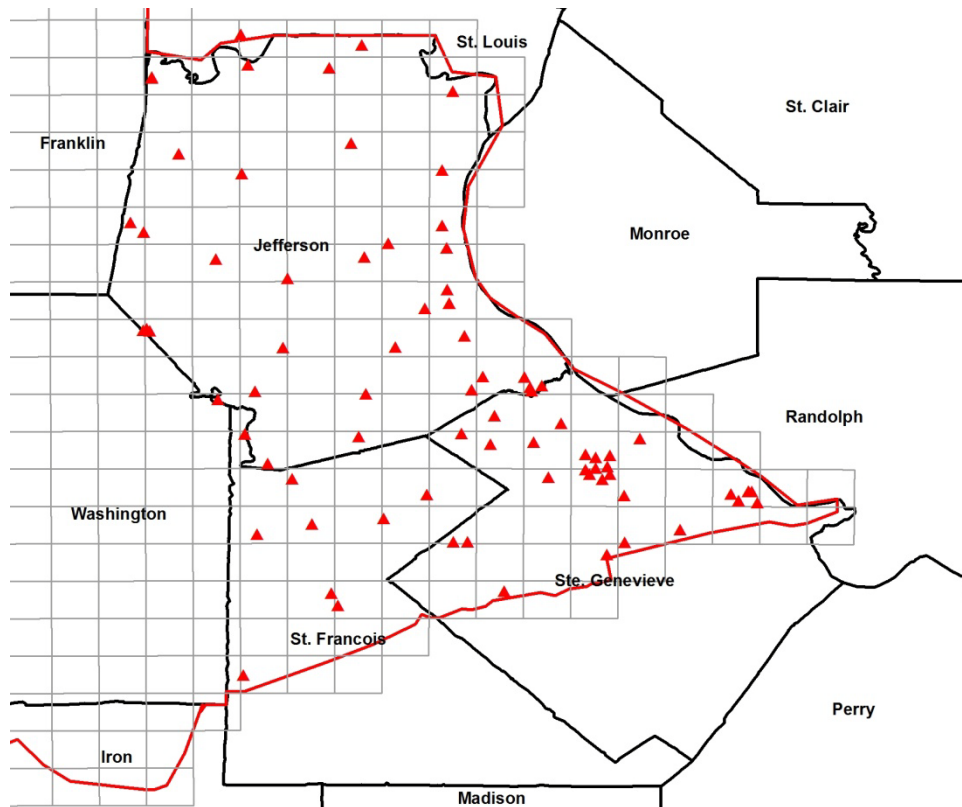


Figure 2 Jefferson, Ste. Genevieve & St. Francois Co. Control

These points consisted of various types of ground cover including asphalt, gravel & grass. Examples to the types of points surveyed are included below.





The required LiDAR elevation data values were derived within ArcGIS from the bare earth .las files. For each control point location a LiDAR elevation value was derived and exported and the surface value subtracted from the survey elevation. These derived values were imported into Excel and comparisons were performed to generate statistics by ground cover type and for the overall dataset.

Results

The table below presents the results of the accuracy analysis for Jefferson, Ste. Genevieve & St. Francois Co., MO. All values are in feet.

Stats	Primary Control	Hard Surface	Grass	Trees	Overall
Count	41	22	31	14	108
Average	0.180	0.180	0.162	0.485	0.214
RMSE	0.502	0.505	0.632	0.632	0.587
95% Confidence Level	0.983	0.991	1.239	1.239	1.150

As indicated above the LiDAR surface meets project specifications of RMSE less than or equal to 18.5 cm, with an overall RMSE of 17.89 cm.