



Department of Geology & Mineral Industries
800 NE Oregon St, Suite 965
Portland, OR 97232

South Coast LIDAR Project, 2008 – Delivery 3 QC Analysis
LIDAR QC Report – December 9th, 2008



Map featuring South Coast Delivery 3 data extent.

The Oregon Department of Geology & Mineral Industries has contracted with Watershed Sciences to collect high resolution lidar topographic data for multiple areas within the State of Oregon. Areas for lidar data collection have been designed as part of a collaborative effort of State, Federal, and Local agencies in order to meet a wide range of project goals. The vendor has agreed to certain conditions of data quality and standards for all lidar data deliverables listed in sections A through C of the 2007-2009 Lidar Data Acquisition Price Agreement (pgs 14-23). Data submitted under this price agreement is to be collected at a resolution of at least 8 points per square meter and processed to meet or exceed the agreed upon data quality standards. This document itemizes and reports upon Delivery 3 products furnished by the lidar vendor as documentation that all data meets project specific standards.

Upon receipt from vendor (Watershed Sciences), all lidar data for Delivery 3 was independently reviewed by staff from the Oregon Department of Geology and Mineral Industries (DOGAMI) to ensure project specifications were met. All data were inventoried for completeness and data were checked for quality, which included examining lidar data for errors associated with internal data consistency, model quality, and accuracy.

- Consistency Analysis involves examining flight line offsets to quantify the accuracy of data calibration. Calibration influences elevation data quality with poor calibration leading to small but systematic errors within lidar elevation points, which then create inaccuracies within derived lidar elevation models.
- Visual checks are carried out in order to identify potential data artifacts and misclassifications of lidar point data. Lidar point data is classified as either ground, above ground, or error points. Sophisticated processing scripts are used to classify point data and remove error points. The data vendor performs quality control analysis to fix misclassifications of point data. The delivered bare earth DEM is then reviewed by DOGAMI to ensure that the data classification is correct and there are no topographic processing artifacts. If errors are found, data must be resubmitted.
- Accuracy of the data is examined by comparing lidar elevation data with independent survey control to quantify vertical and horizontal accuracy. For each lidar collection project DOGAMI collected independent GPS ground elevations, which were then compared against delivered lidar elevation models.

Data Completeness

Data for the Delivery 3 area was collected between May 3rd and June 26th, 2008. Total area of delivered data totals 135.16 square miles. Delivery 3 (Figure 1) includes data in the format of grids, trajectory files, intensity images, Lidar ASCII Standard (LAS) point files, ground point density rasters, RTK survey data, a shapefile of the delivery area, and the lidar delivery report (Table 1). Bare earth and highest hit grids were delivered in ArcInfo Grid format with 3ft cell size. Lidar point data is delivered in LAS binary format for ground classified returns as well as the entire lidar point cloud. Georeferenced intensity images are supplied in TIF format. Supplementary data includes ground density rasters displaying locations where ground returns

are low. Real time kinematic ground survey data (used for absolute vertical adjustment) is supplied in shapefile format. This delivery contains data for the following USGS 7.5 minute quads (listed by Ohio Code #) within the boundary of the South Coast Survey collection area: 42124d3, 42124d3, 42124e3, 42124e4, 42124f3, 42124f4, 42124f5 (Figure 1).

FINAL Delivery	Resolution	Format	Tiling	
<i>Bare Earth DEMs</i>	3ft	grid	quad	x
<i>Highest Hit DEMs</i>	3ft	grid	quad	x
<i>Trajectory files</i>	1 sec	ascii (TXYZRPH)	flight	x
<i>Intensity Images</i>	1.5ft	tif	100th quad	x
<i>LAS</i>	8pts/m ²	las	100th quad	x
<i>Ground Returns</i>	N/A	las	100th quad	x
<i>Ground Density Raster</i>	3ft	grid	quad	x
<i>RTK point data</i>		shape		x
<i>Delivery Area shapefile</i>		shape	quad	x
<i>Report</i>		pdf		x
Miscellaneous				
<i>Processing bins</i>		dxr or dgn	project	x

Table 1. Deliverable Checklist

All data associated with this delivery has been loaded and viewed to ensure completeness. Raster imagery such as elevation grids and intensity geotifs have been viewed in ArcMap, cross referenced with the delivery area. Las files have been loaded into Terrasolid software to ensure completeness and readability.

Deliverable Descriptions: (All data projected in Oregon Lambert, NAD83 (HARN), Intl Feet with exception of trajectory files).

- Bare Earth Grids: Tin interpolated grids created from lidar ground returns.
- Highest Hit Grids: Tin interpolated grids created from the highest lidar elevation for a given 3ft cell.
- Intensity TIFF: TIFF raster built using returned lidar pulse intensity values gathered from highest hit returns.
- Trajectory File: File contains point location measurement of the aircraft used to collect lidar data. Data is collected using an Inertial Measurement Unit (IMU), and collects measurements of: Easting(meters), Northing (meters), Ellipsoid Height (meters) of aircraft, aircraft roll (degrees), aircraft pitch (degrees), aircraft heading (degrees). Measurements are collected at one second intervals. Data is projected in UTM zone 10, NAD83 (HARN).
- LAS: Binary file of all lidar points collected in survey (Class, flight line #, GPS Time, Echo, Easting, Northing, Elevation, Intensity, Scan Angle, Echo Number, and Scanner).

- Ground LAS: Binary file of lidar points classified as ground (Class, flight line #, GPS Time, Echo, Easting, Northing, Elevation, Intensity, Scan Angle, Echo Number, and Scanner).
- RTK Point Data: Ground GPS Survey data used to correct raw lidar point cloud for vertical offsets.
- Delivery Area Shapefile: Geometry file depicting the geospatial area associated with deliverables.
- Report: Report provides detailed description of data collection methods and processing. The vendor also reports accuracies associated with calibration, consistency, absolute error, and point classifications.



Figure 1. Delivery 1 location area. Data is referenced to USGS 7.5 minute quadrangles within the extents of the South Coast Survey collection area.

Consistency Analysis:

The Oregon LIDAR Consortium has specified that lidar consistency must average less than 0.15m (0.49 feet) in vertical offsets between flight lines. DOGAMI measures consistency offsets throughout delivered datasets to ensure that project specification are met.

Consistency refers to lidar elevation differences between overlapping flight lines. Consistency errors are created by poor lidar system calibration setting associated with sensor

platform mounting. Errors in consistency manifest as vertical offsets between individual flight lines. Consistency offsets were measured using the “find match” tool within the TerraMatch© software toolset. This tool uses aircraft trajectory information linked to the lidar point cloud to quantify flight line-to-flight line offsets.

To quantify the magnitude of this error 239 of 574 delivered data tiles were examined for vertical offset between flight lines. Selection of tiles aimed to evenly sample the delivered spatial extent of data. Each tile measured 750 x 750 meters in size. The average number of points used for flight line comparison was 63,121 per tile (Table 2a). Error measurements were calculated by differencing of the nearest point within 1 meters in the horizontal plain and 0.2 meters in the vertical plane. Each flight line was compared to adjacent flight lines, and the average magnitude of vertical error was calculated. A total of 155 flight lines were sampled. The total number flight line comparisons totaled 918.

Summary Statistics

# of Tiles	239
# of Flight Line Sections	918
Avg # of Points	63,121
Avg. Magnitude Z error (m)	0.050

Table 2a. Summary Results of Consistency Analysis

	<i>meters</i>	<i>feet</i>
Mean	0.050	0.164
Standard Error	0.001	0.002
Standard Deviation	0.015	0.050
Sample Variance	0.000	0.001
Range	0.090	0.294
Minimum	0.021	0.069
Maximum	0.111	0.363

Table 2b. Descriptive Statistics for Magnitude Z Error.

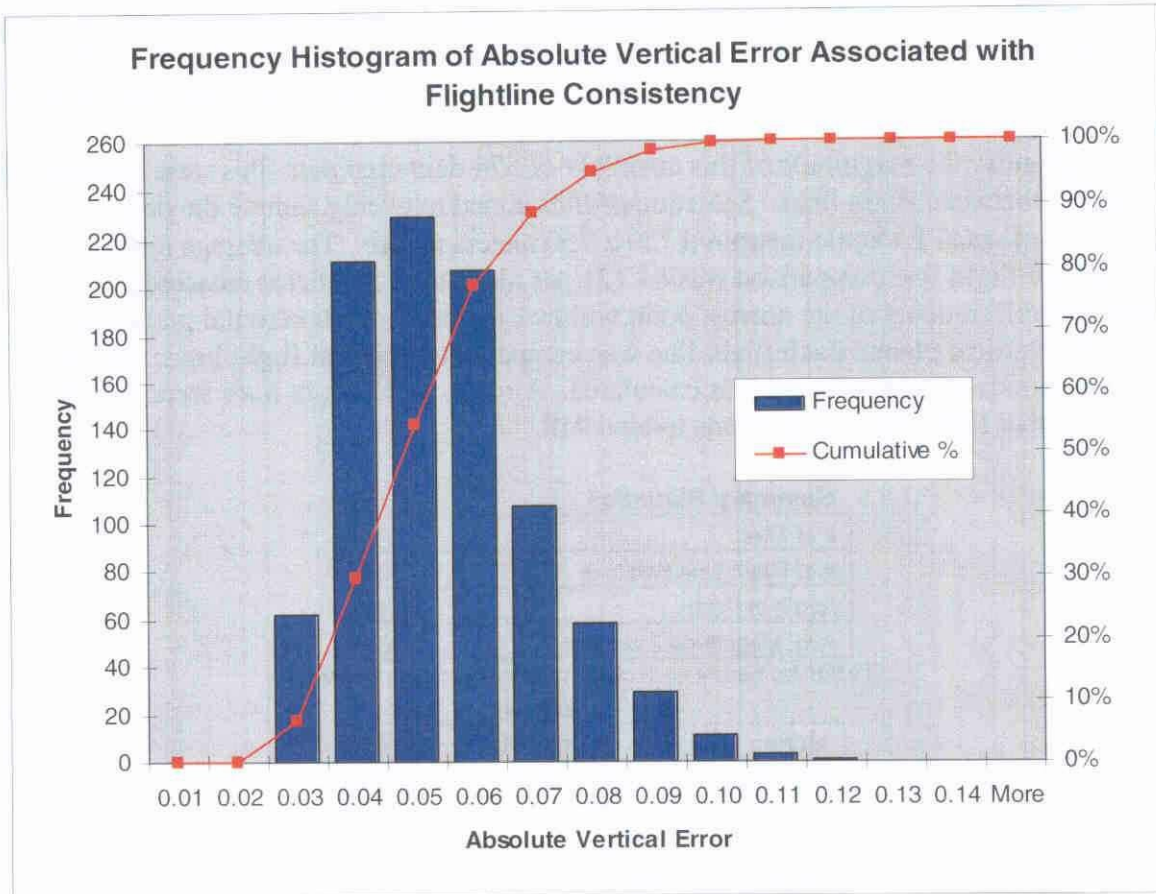


Figure 2.

Results of the consistency analysis found the average flight line offset to be 0.050 meters with a maximum error of 0.111 (Table 2b). Distribution of error showed over 95% of all error was less than 0.08m and 99% was less than 0.10m (Figure 2). These results show that all data fell well within tolerances of data consistency.

Visual Analysis

Lidar 3ft grids were loaded into ArcGIS software for visual analysis. Data were examined through slope and hillshade models of bare earth returns. Hillshades of the highest hit models were used to identify areas of missing ground (Figure 3). Both bare earth and highest hit models were examined for calibration offsets, tiling artifacts (Figure 4), seam line offsets, pits (Figure 5), and birds.

Calibration offsets typically are visualized as a corduroy-like patterning within a hillshaded lidar model. These offsets present themselves along steep slopes and typically stand out more in highest hit models than bare earth. Tiling artifacts are a result of missing or misclassified data along the edge of lidar processing tiles. These artifacts present themselves as linear features typically 1-2 grid cells in width, and are present in both the highest hit and bare earth models (e.g. Figure 3). Seam line offsets occur where two distinct days of lidar data overlap. Errors occur as a result of improper absolute vertical error adjustments. These errors are typically visualized as a linear stair step running along the edge of connecting flight lines.

Pits and birds refer to uncommonly high or low points that are the result of atmospheric and sensor noise. Pits (low points) typically occur where the laser comes in contact with water on the ground (Figure 5). Birds (high points) typically occur where the laser comes into contact with atmospherics¹.

Errors located during visual analysis were digitized for spatial reference and stored in shapefile format. Each feature was assigned an ID value and commented to describe the nature of the observed error. The shapefile was delivered to the vendor for locating and fixing errors. Upon receiving the observed error locations, the vendor performed an analysis to conclude whether the error was valid. For all valid errors found, the vendor has reprocessed the data to accommodate fixes. For all observed errors that are found to be false, the vendor has produced an image documenting the nature of the feature in grid and point data format. A readme file was created explaining all edits performed. Corrected data was delivered to DOGAMI. This data were examined to ensure edits were made, and visually inspected for completeness.

¹ Atmospherics include clouds, rain, fog, or virga.

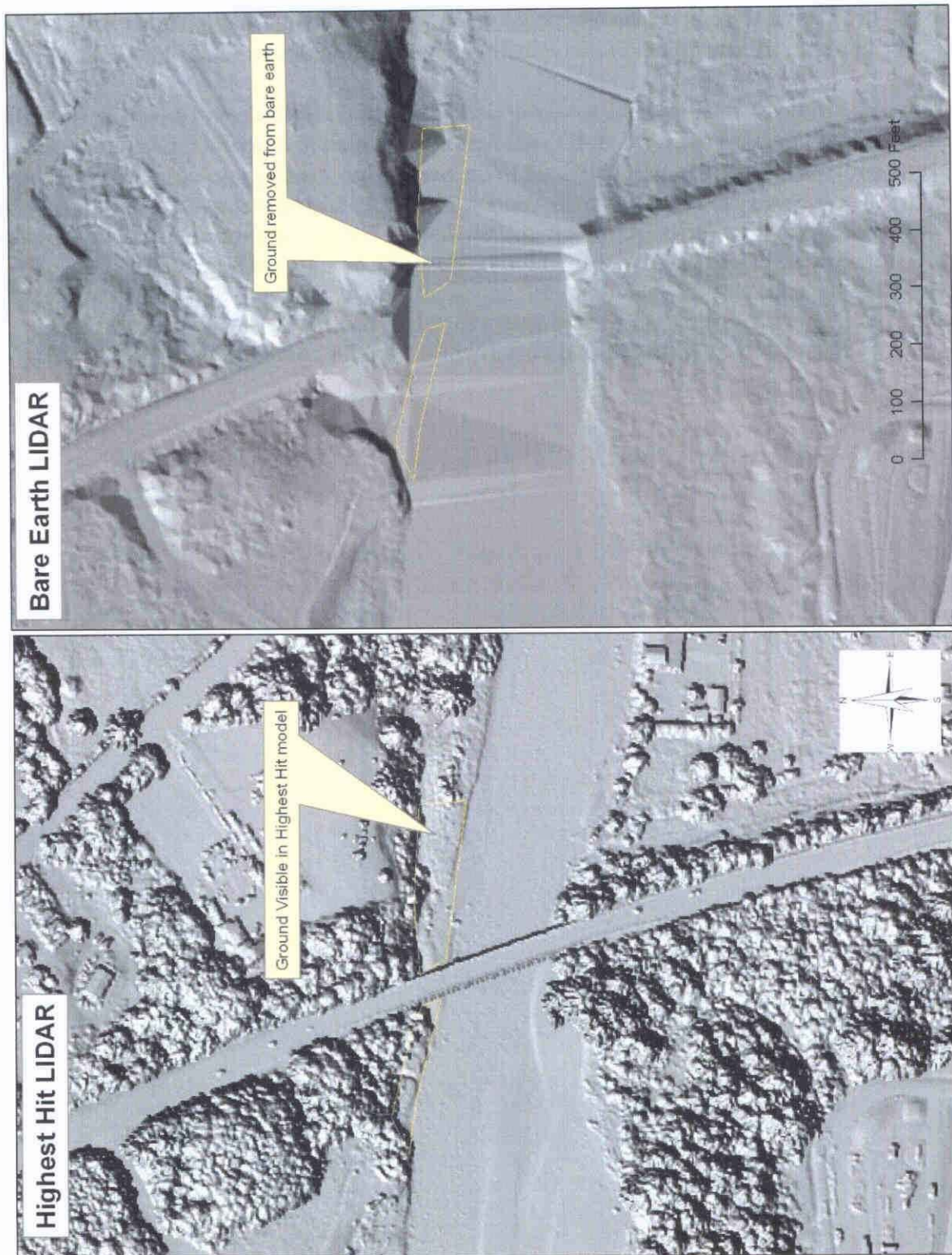


Figure 3. Example of missing ground in lidar bare earth data. Ground is clearly visible in highest hit model, but has been removed from the bare earth model. This type of classification error is common near water body features.

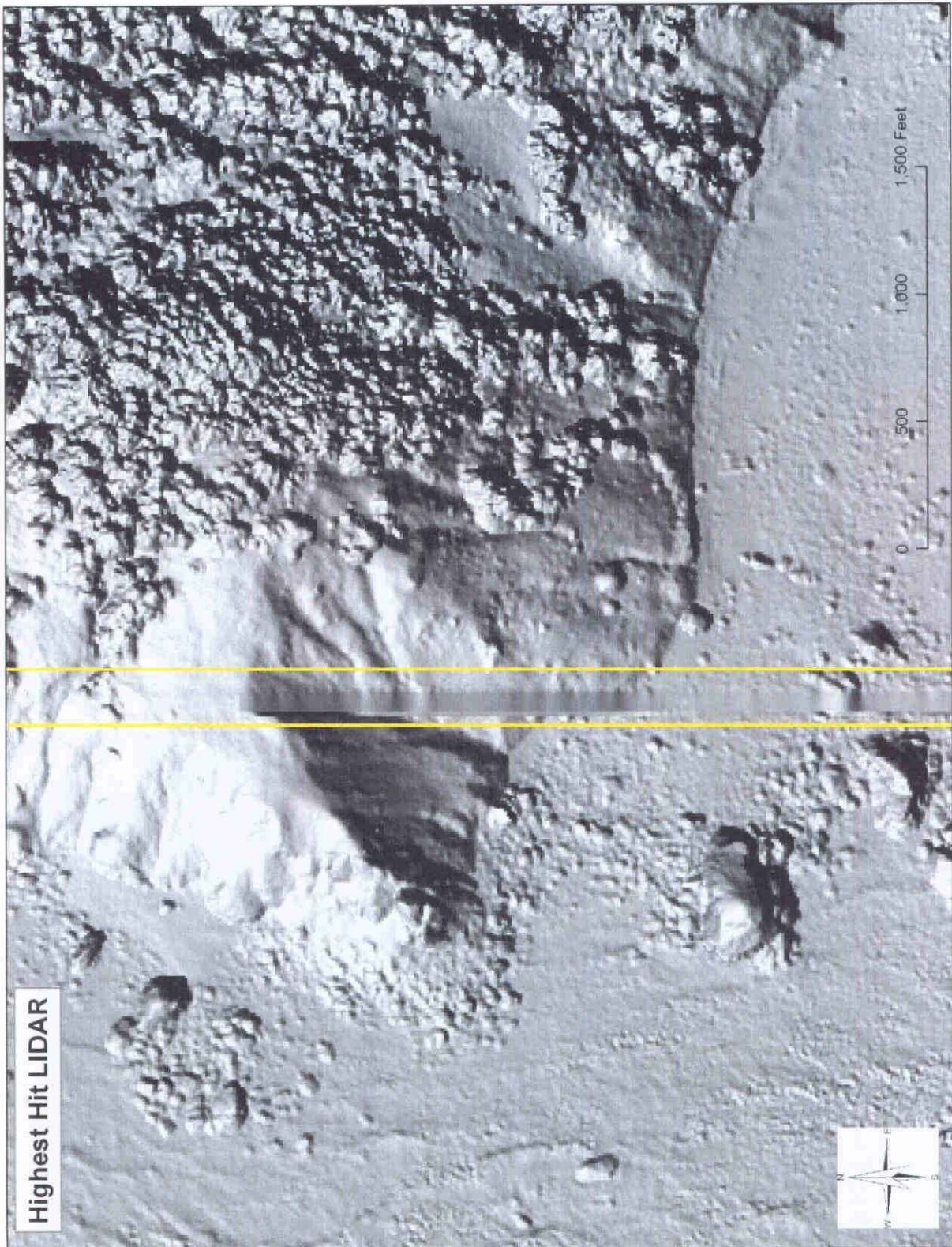


Figure 4. Example of tile artifact found in highest hit lidar data. Artifact is a seam line error created due to misclassification of ground at edge of lidar processing tiles.

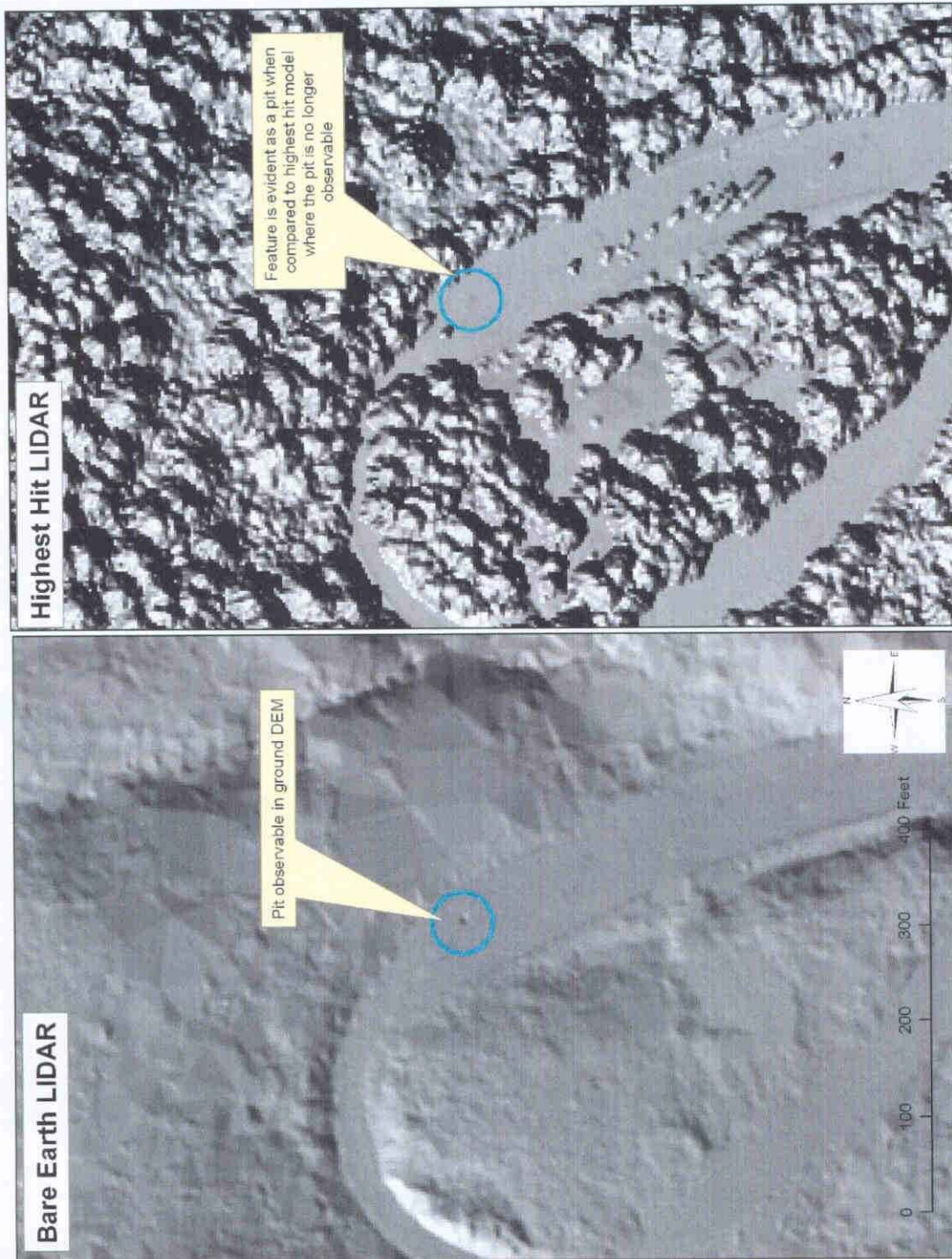


Figure 5. Example of “Pit” observable when comparing bare earth to highest hit models. Pits are caused when standing water absorbs the lidar pulse. Pits are evident in ground model as the lowest point elevation is assigned to the grid cell value. Inversely the pit is not observable in the highest hit model as the highest point elevation is assigned to the grid value

Absolute Accuracy Analysis:

Absolute accuracy refers to the mean vertical offset of lidar data relative to measured ground-control points (GCP) obtained throughout the lidar sampling area. DOGAMI used a Trimble™ 5700/5800 Total Station GPS surveying system (Figure 5) to measure GCP's. This system consisted of a GPS base station (5700 unit), Zephyr Geodetic antenna, Trimmark 3 radio, and 5800 "rover". The 5700 base station was mounted on a fixed height (typically 2.0 m) tripod and located over a known geodetic survey monument followed by a site calibration on several adjacent benchmarks to precisely establish a local coordinate system. This step is critical in order to eliminate various survey errors. For example, Trimble reports that the 5700/5800 GPS system have horizontal errors of approximately $\pm 1\text{-cm} + 1\text{ppm}$ (parts per million * the baseline length) and $\pm 2\text{-cm}$ in the vertical (TrimbleNavigationSystem, 2005). These errors may be compounded by other factors such as poor satellite geometry, multipath, and poor atmospheric conditions, combining to increase the total error to several centimeters. Thus, the site calibration process is critical in order to minimize these uncertainties.

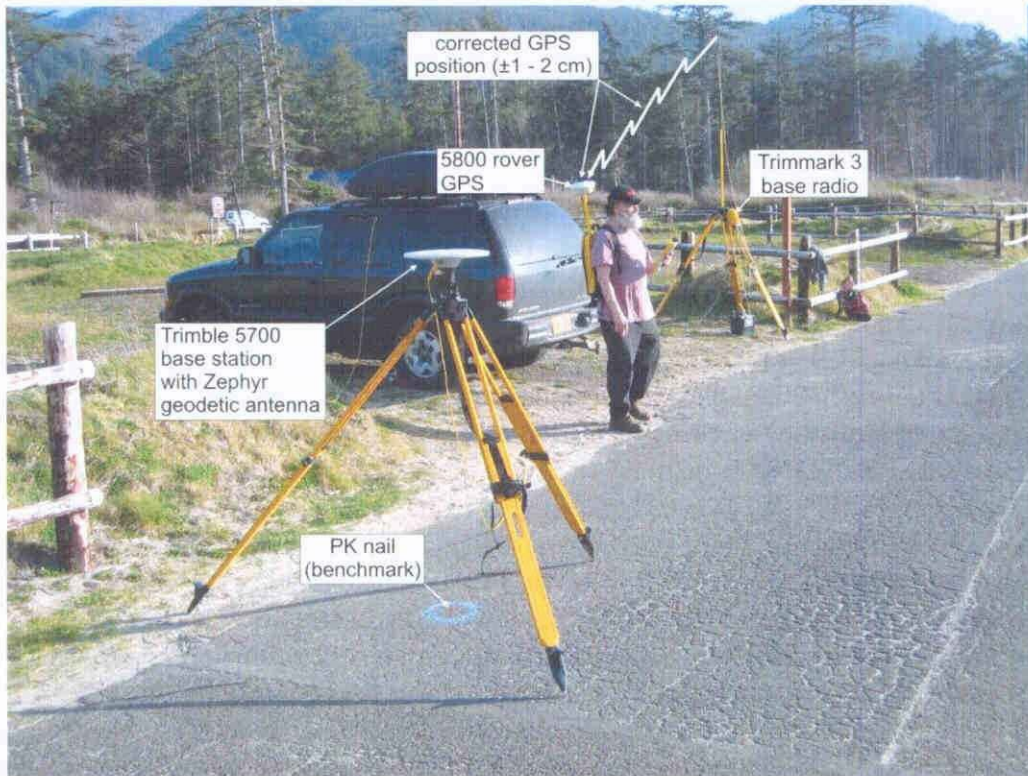


Figure 5. The Trimble 5700 base station antenna located over a known reference point at Cape Lookout State Park. Corrected GPS position and elevation information is then transmitted by a Trimmark III base radio to the 5800 GPS rover unit.

The approach adopted for the Southern Oregon coast lidar survey was comprised of three components:

- 1) Verify the horizontal and vertical coordinates established by Watershed Sciences for a select number of survey monuments used to calibrate the lidar survey. These surveys typically involved a minimum of two hours of GPS occupation over a known point. The collected data were then submitted to the

- National Geodetic Survey (NGS) Online Positioning User Service (OPUS) for post-processing against several Continuously Operating Reference Stations (CORS) operated by the NGS.
- 2) Collect GCP's along relatively flat surfaces (roads, paths, parking lots etc.). This step involved the collection of both continuous measurements (from a vehicle as well as from a backpack) as well as static measurements (typically 5 epics).
 - 3) Collect GCP's in varying types of terrain (contrasting vegetation types and terrain). Note this latter effort has not been used to validate whether the lidar data meets the prescribed specifications. This step also involved the collection of both continuous measurements (from a vehicle as well as from a backpack) as well as static measurements (typically 5 epics).

Having collected the GCP data, the GPS data was post-processed using Trimble's Geomatic Office software. Data post-processing typically involved calibrations against at least three CORS stations as well as from local site calibrations performed in the field using those benchmarks that had been independently verified. Data is post processed to refine measurements so that horizontal and vertical errors are less than 0.02 meters (0.065 feet). Horizontal accuracy of data is tested by reoccupying a sample subset of survey monuments used for processing of lidar data. Each occupation x and y coordinates are compared with the vendor coordinates for offsets.

Vertical accuracy analysis consisted of differencing control data and the delivered lidar Digital Elevation Models (DEM) to expose offsets. These offsets were used to produce a mean vertical error and vertical RMSE value for the entire delivered data set. Project specifications list the maximum acceptable mean vertical offset to be 0.20 meters (0.65 feet).

Out of a total of 1,839 measured GCP's obtained in the Delivery 3 region, 1,833 control points were eventually compared with the lidar elevation grids (the remaining 6 GCP's not used reflected those points collected in complex terrain or in various types of vegetation, Figure 6). The data delivered to DOGAMI was found to have a mean vertical offset of +/-0.041 meters (0.133 feet) and an RMSE value of 0.054 meters (0.178 ft). Offset values ranged from 0 to 0.44m meters (Table 3 and Figure 7). Maximum offsets were typically found to be associated with areas where the vehicle was turning or where the vehicle and hence GPS was located close to terrain where the slope changed markedly (e.g. next to ditches).

Horizontal accuracies were not specified in agreement since true horizontal accuracy is regarded as a product of the lidar ground foot print. Lidar is referenced to co-acquired GPS base station data that has accuracies far greater than the value of the lidar foot print. The ground footprint is equal to $1/3000^{\text{th}}$ of above ground flying height. Survey altitude for this acquisition was targeted at 900 meters yielding a ground foot print of 0.30 meters. This value exceeds the typical accuracy value of ground control used to reference the lidar data (<0.01m). Project specifications require the lidar foot print to fall within 0.15 and 0.40 meters.

DOGAMI was able to test the horizontal accuracy of survey monuments used to reference the lidar data while conducting vertical control measurements. For internal purposes only, the XY coordinates of survey monuments surveyed by DOGAMI were compared to the survey monuments provided by the vender and in almost every case, the reported results were consistent with those obtained by DOGAMI staff.



Figure 6. Locations of RTK control surveyed by DOGAMI. Data was used to test absolute accuracy for the South Coast lidar survey within the Delivery 1 extent.

	<i>Meters</i>	<i>Feet</i>
Mean	0.041	0.133
Standard Error	0.001	0.003
Standard Deviation	0.036	0.118
Range	0.450	1.475
Minimum	0.000	0.000
Maximum	0.450	1.475
Confidence Level(95.0%)	0.002	0.005

Table 3. Descriptive Statistics for absolute vertical offsets

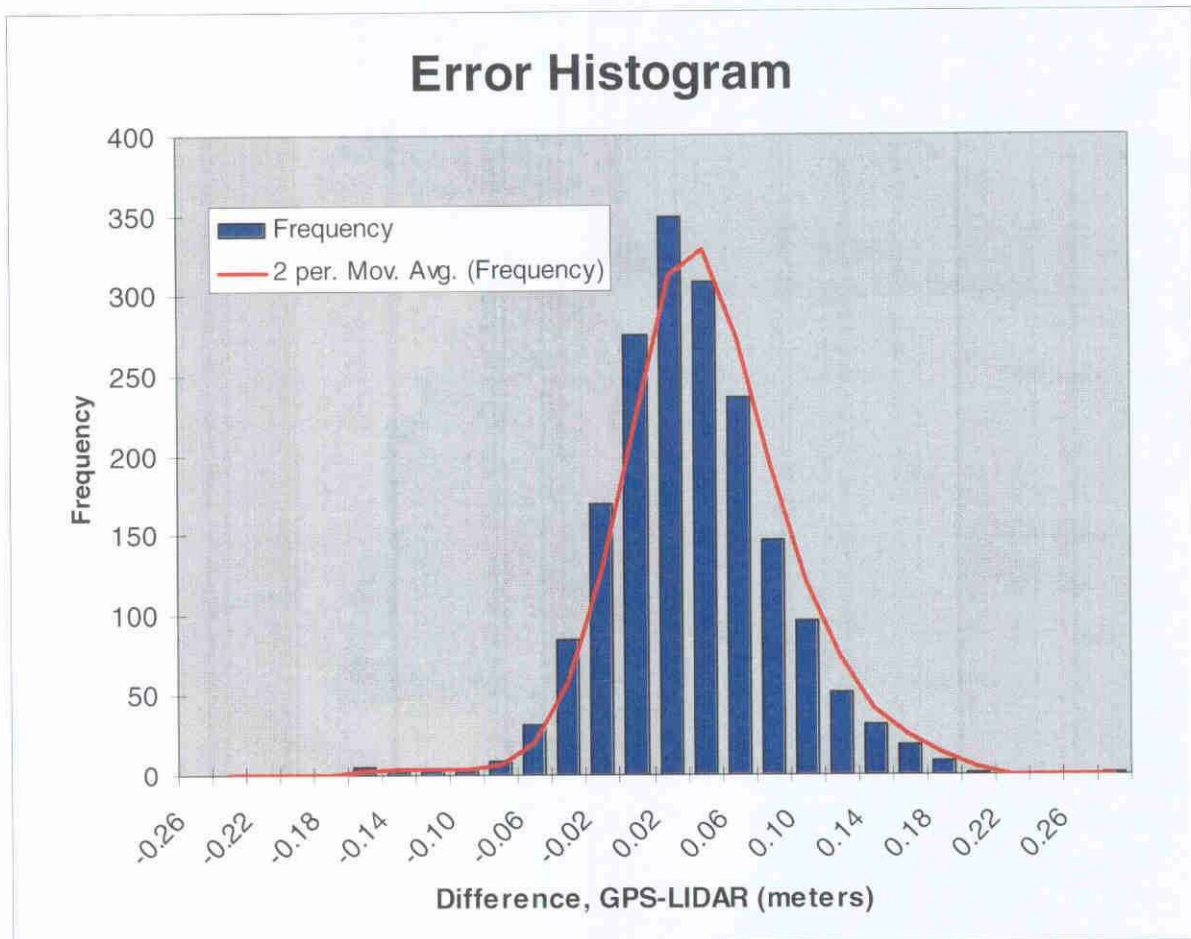


Figure 7.

The data described in this report meets and exceeds project specifications laid out in the contracted data standards agreement. All components of data to be delivered have been received as of December 9th, 2008. Consistency analysis has concluded that all data contains flight line to flight line vertical offset less than the threshold of 0.15 meters as specified in agreement. The vendor has adequately responded to all fixable errors identified as part of the visual analysis. Perceived grid errors identified by DOGAMI that were found to be false have been documented by the vendor and explained to the satisfaction of DOGAMI reviewers. Absolute accuracy analysis of the data has concluded that absolute vertical error of lidar data is less than the specified tolerance of 0.20 meters as specified in the data standards agreement.

Approval Signatures


_____ Date: 12/11/08

Ian Madin
Chief Scientist


_____ Date: 12/11/08

John English
Lidar Database Coordinator

