

High Resolution Elevation QA Review Report

Project: Tennessee Hamilton County Lidar 2011 **Contract ID:** 10-059

Liaison: Keith McFadden **Partner(s):** **Contractor:** The Atlantic Group,

Data Delivery Date: 11/23/2011 **Date Data Reviewed:** 11/30/2011 - 12

Reviewer: Eric Jaramillo **Total Square Miles Reviewed:** 233 sq. miles

Elevation Type: LIDAR **Format:** .img **Grid Spacing:** 1 meter **Tile size:** 1500 x 1500

Projection: UTM **Zone:** 16 **Datum:** NAD83 **Units:** Meters

Licensing: Public Domain **Metadata: Project Level Acquisition Date:** 03/31/2011 thru

Materials Received:

Boundary shape file
Breaklines
Building shape files
Control files
Dem (bare earth), (first return) and (last return) .img files
Elevation shape file

Vertical Accuracy Test Performed: Yes **Test Point Source:** Contractor **RMSE:** 0.114 meters

Vertical Accuracy Test Notes:

A vertical check was performed on TN. Hamilton County bare earth data and passed .
253 FVA points checked
1366 SVA points checked
1620 CVA points checked

QA Review Summary:

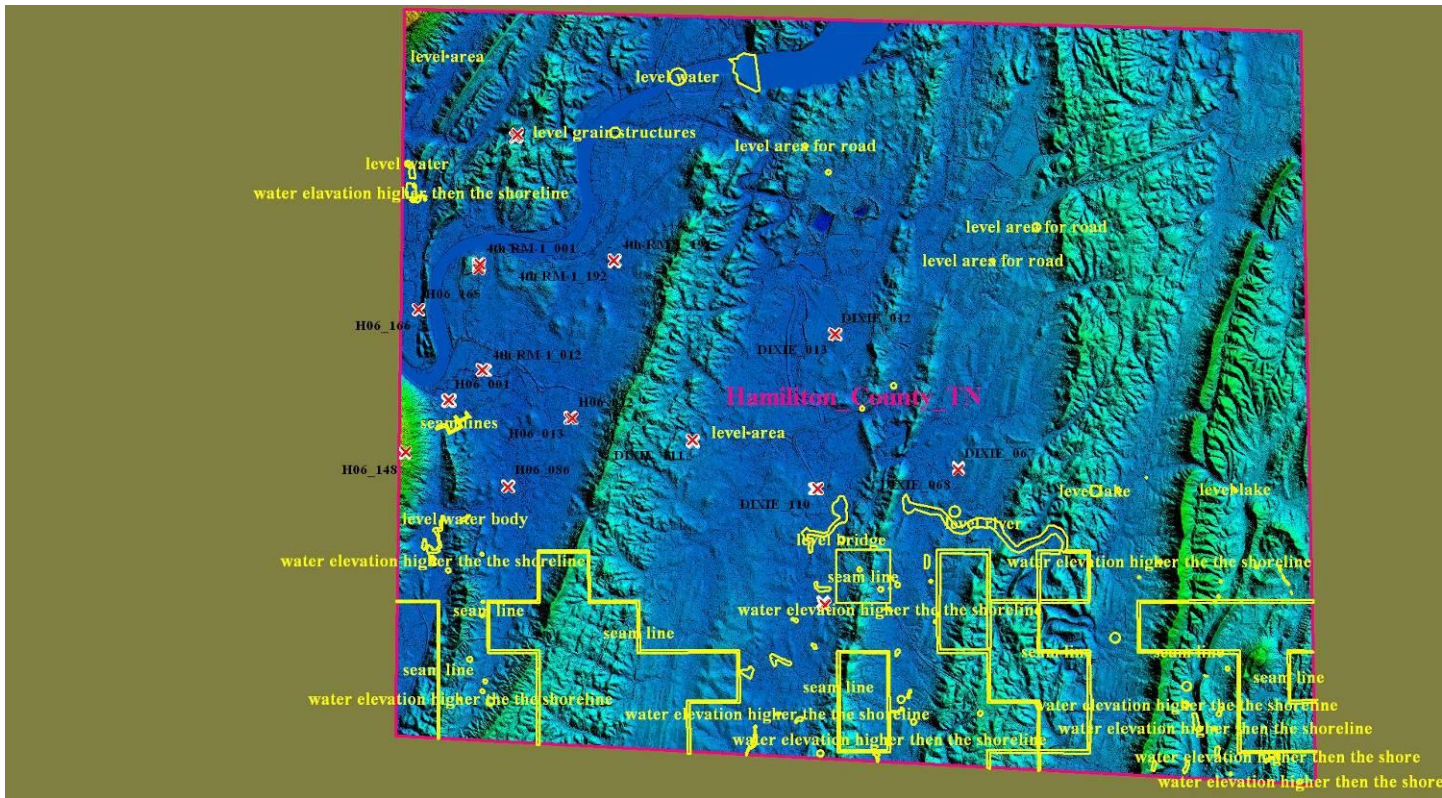
All of TN. Hamilton County one meter Lidar data was reviewed. This data was brought into Global Mapper as .img files for QA/QC. Errors found throughout this project and need to be fixed by the contractors are (water elevations higher then the shoreline, seam lines, structure and bldg need to be removed, lakes and rivers need to be leveled, bridges that need to be removed and leveled for the road). This data is has been fix by the contractor and is accepted. This data will be archived.

See JPEG Examples below of errors found throughout this project.

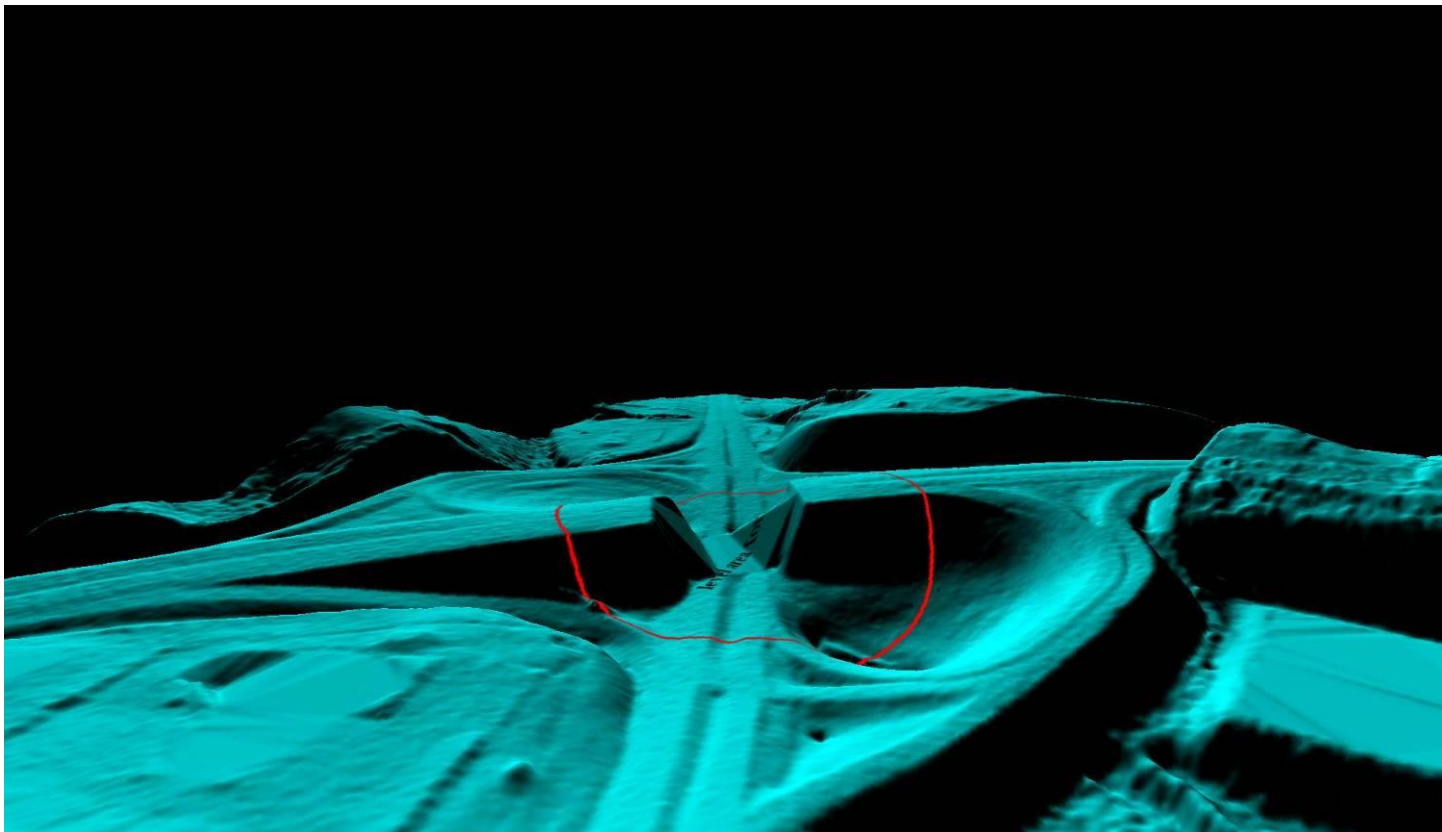
Conclusions:

1. 90% of artifacts removed
2. 95% of vegetation removed
3. 98% of buildings removed
4. 95% of outliers removed

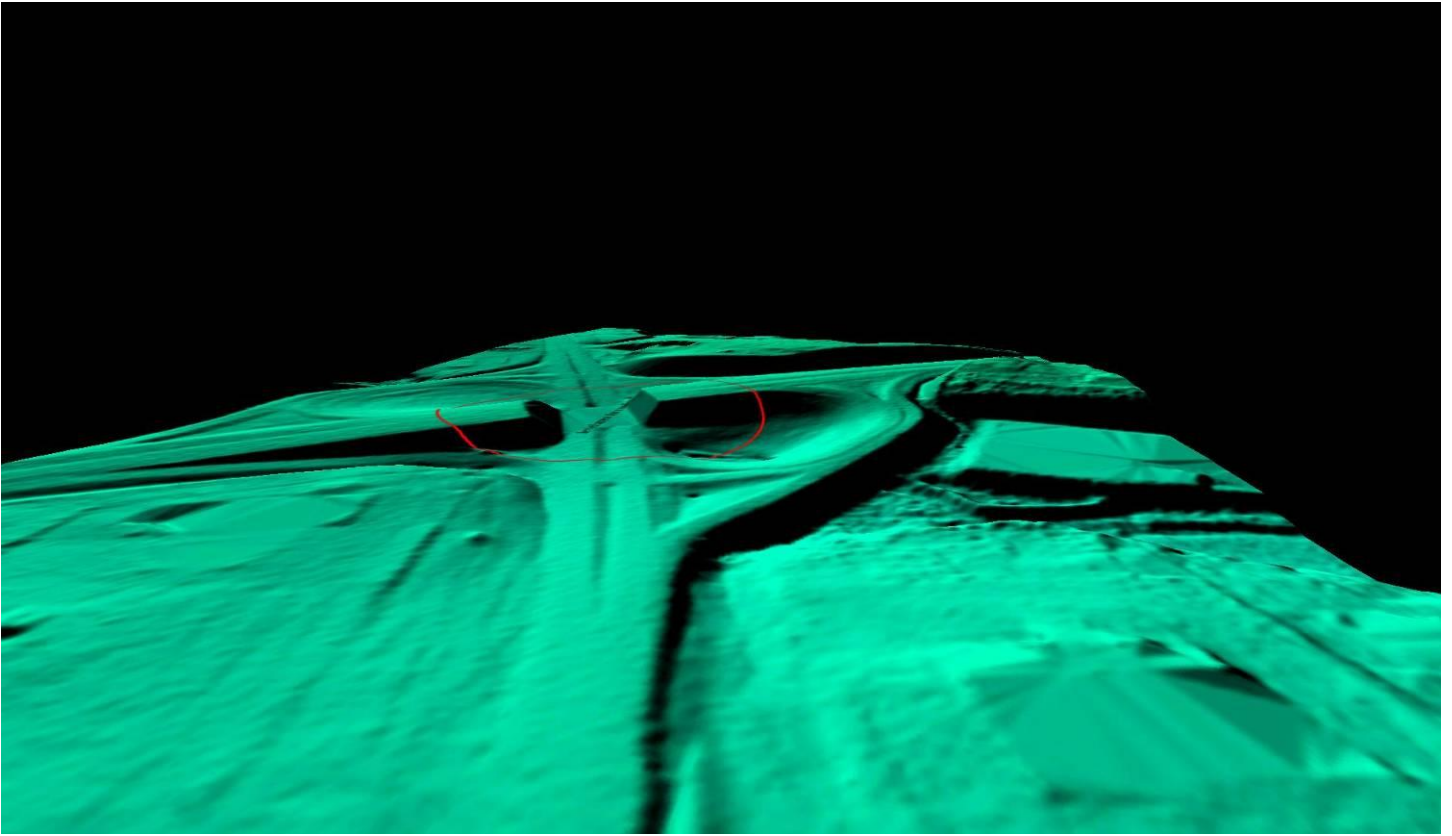
TN. Hamilton County



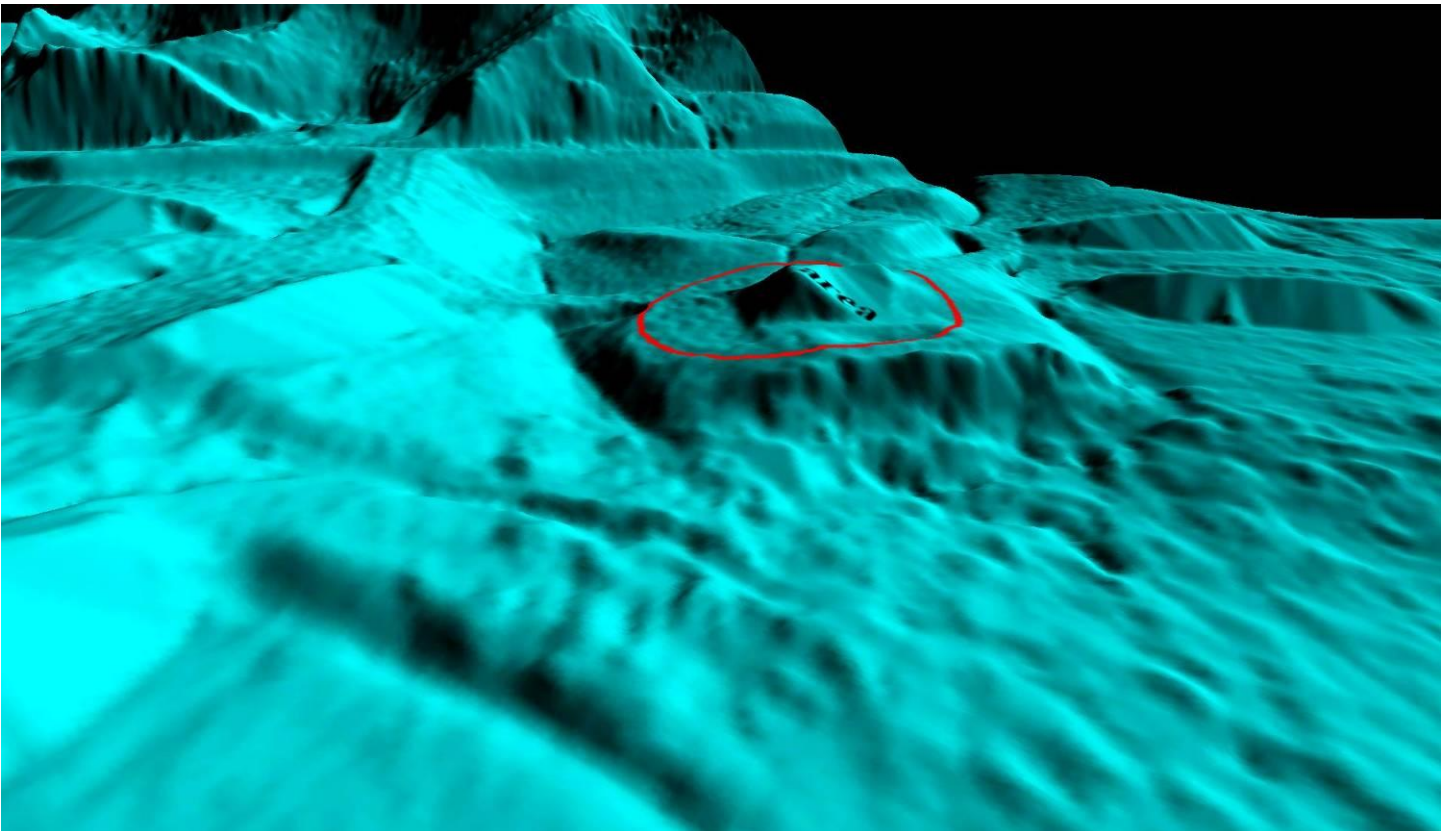
TN. Hamilton County remove data for the road



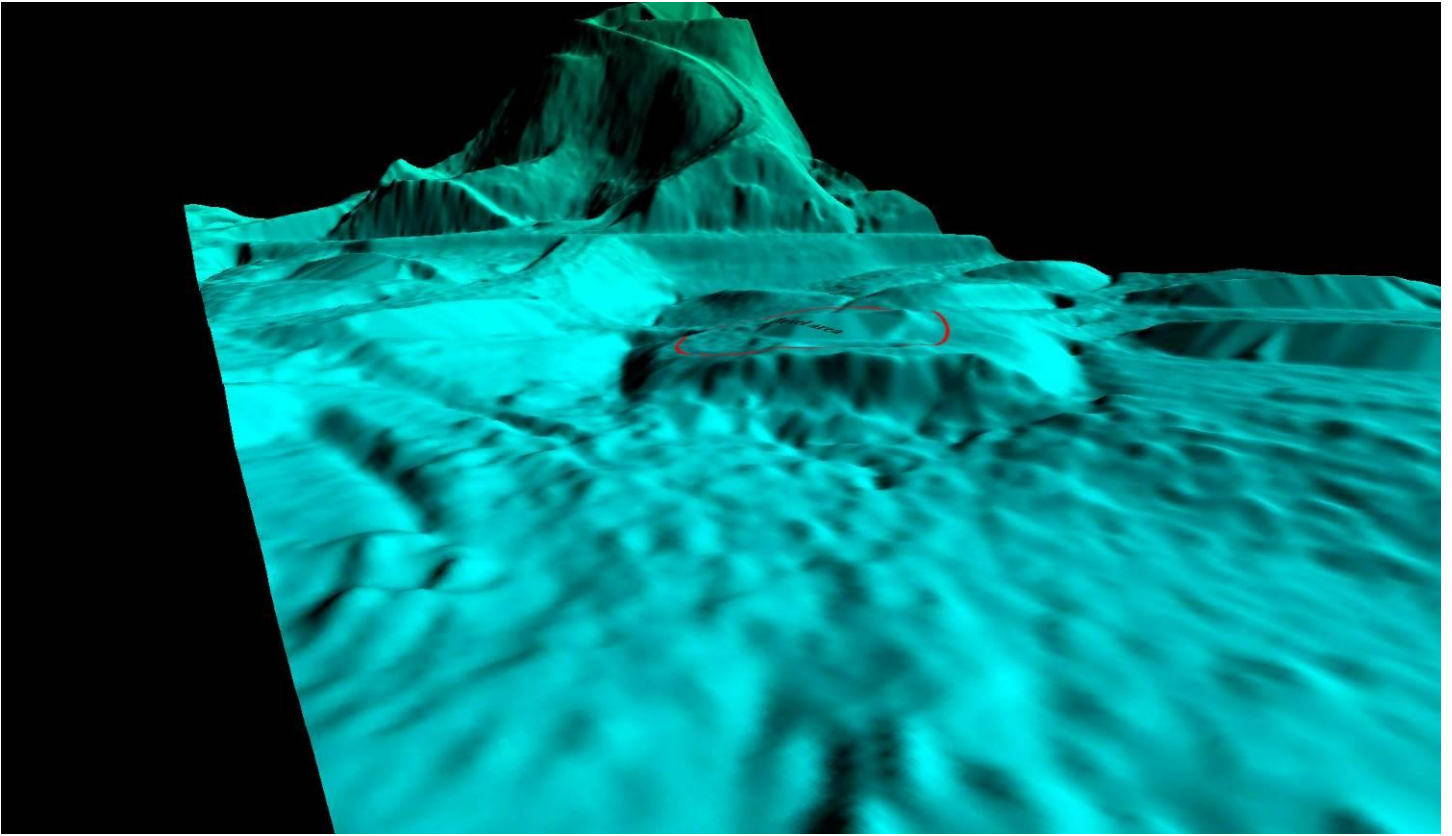
TN. Hamilton County remove data for the road (Fixed)



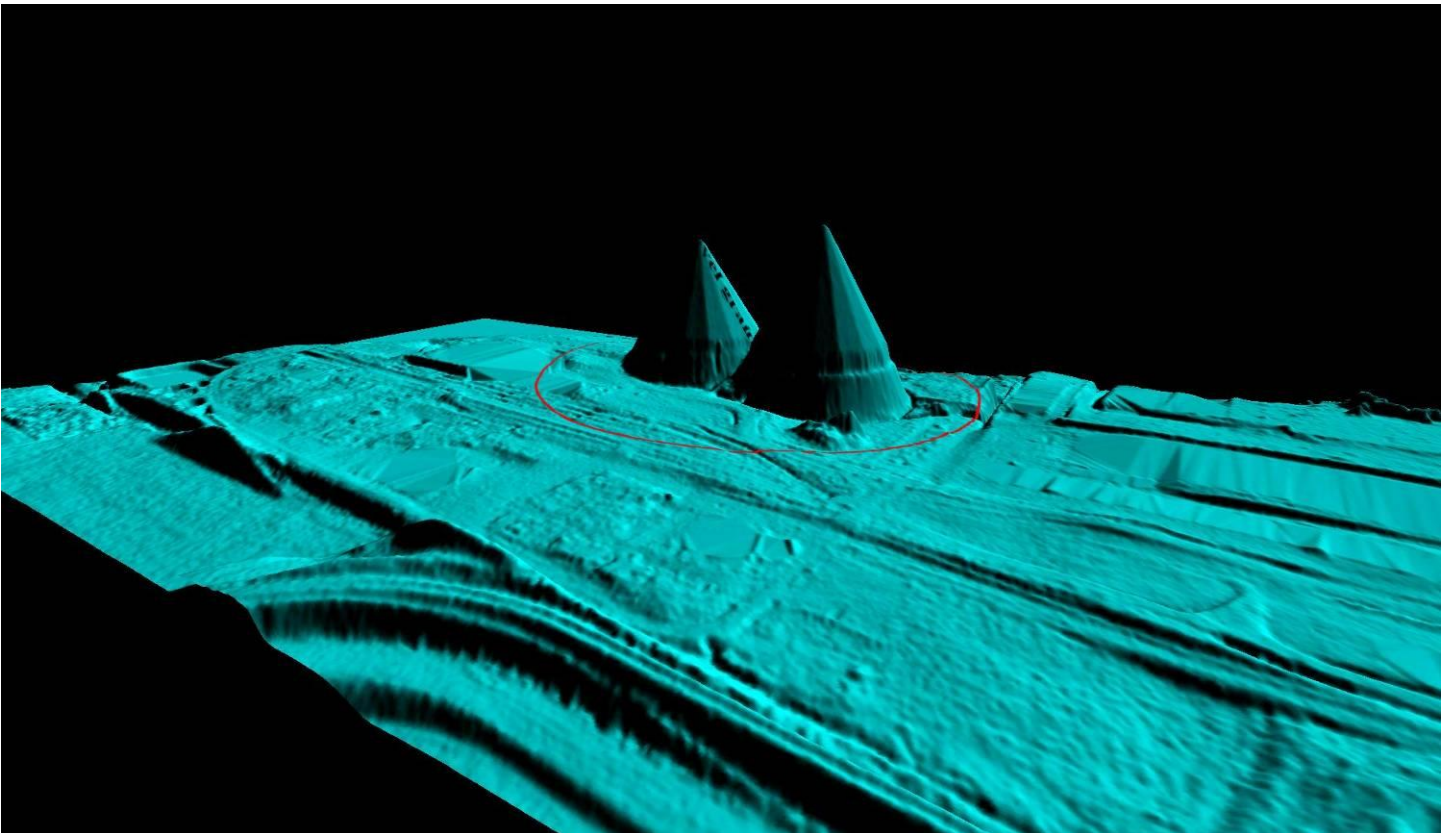
TN. Hamilton County level bldg



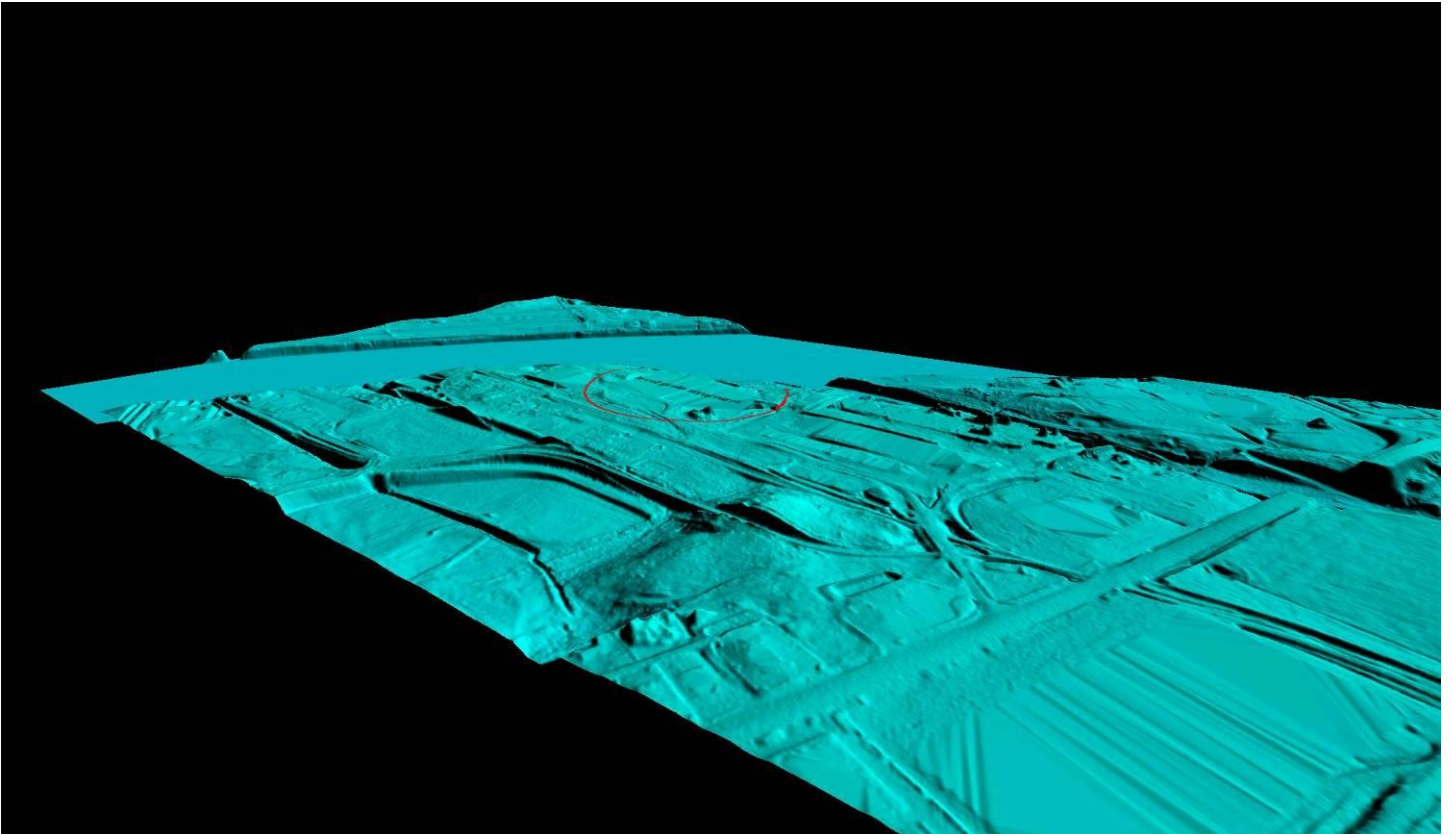
TN. Hamilton County level bldg (Fixed)



TN. Hamilton County level structures



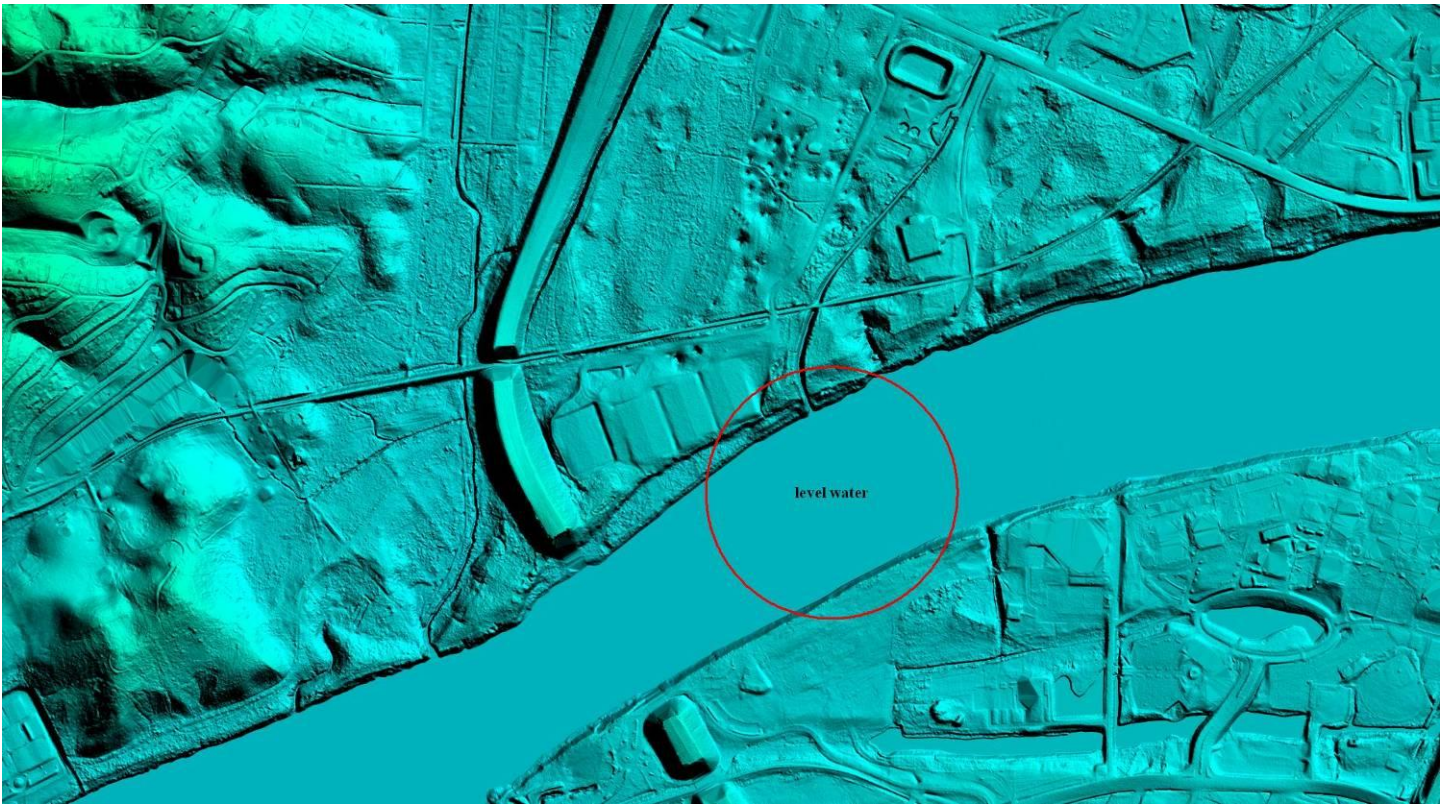
TN. Hamilton County level structures (Fixed)



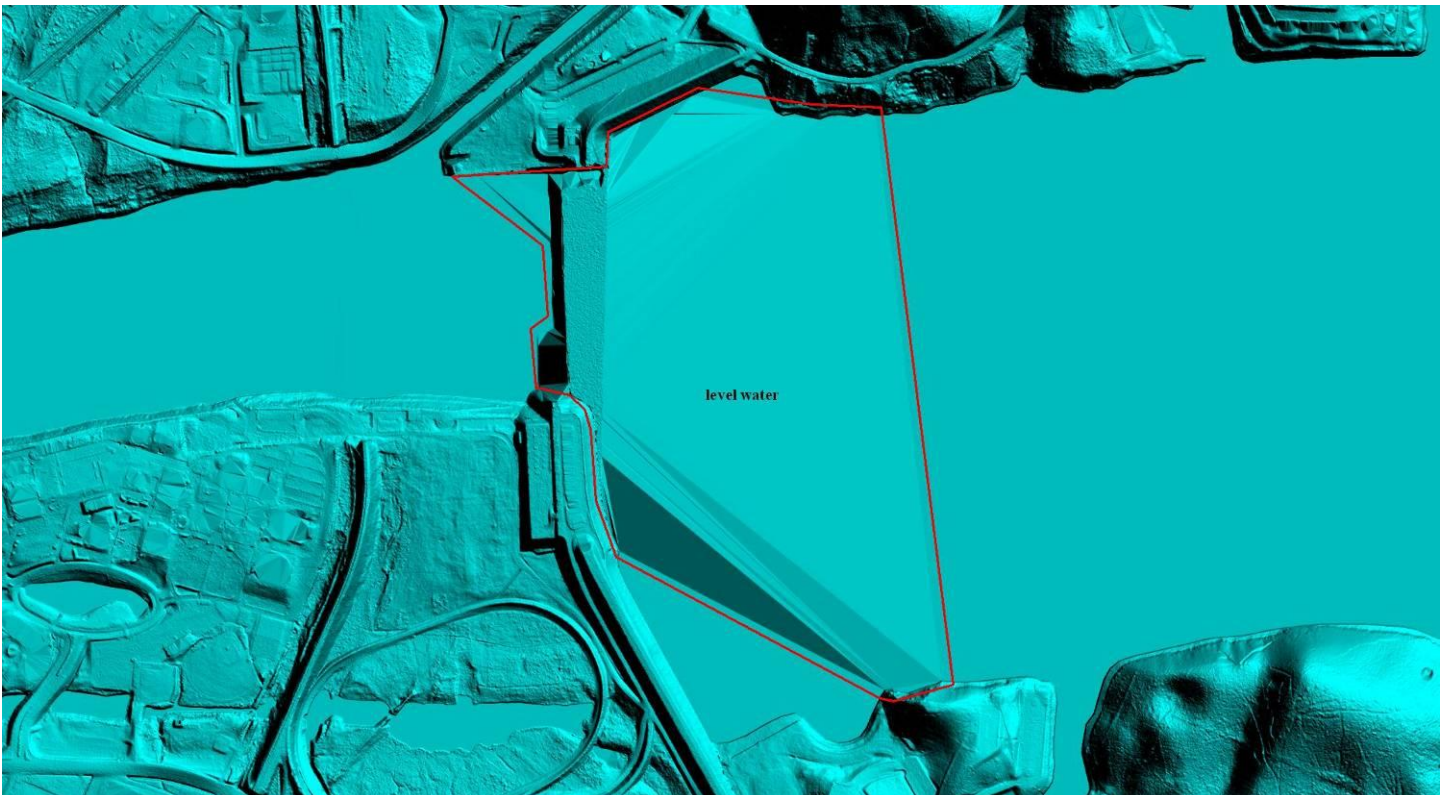
TN. Hamilton County level river 1



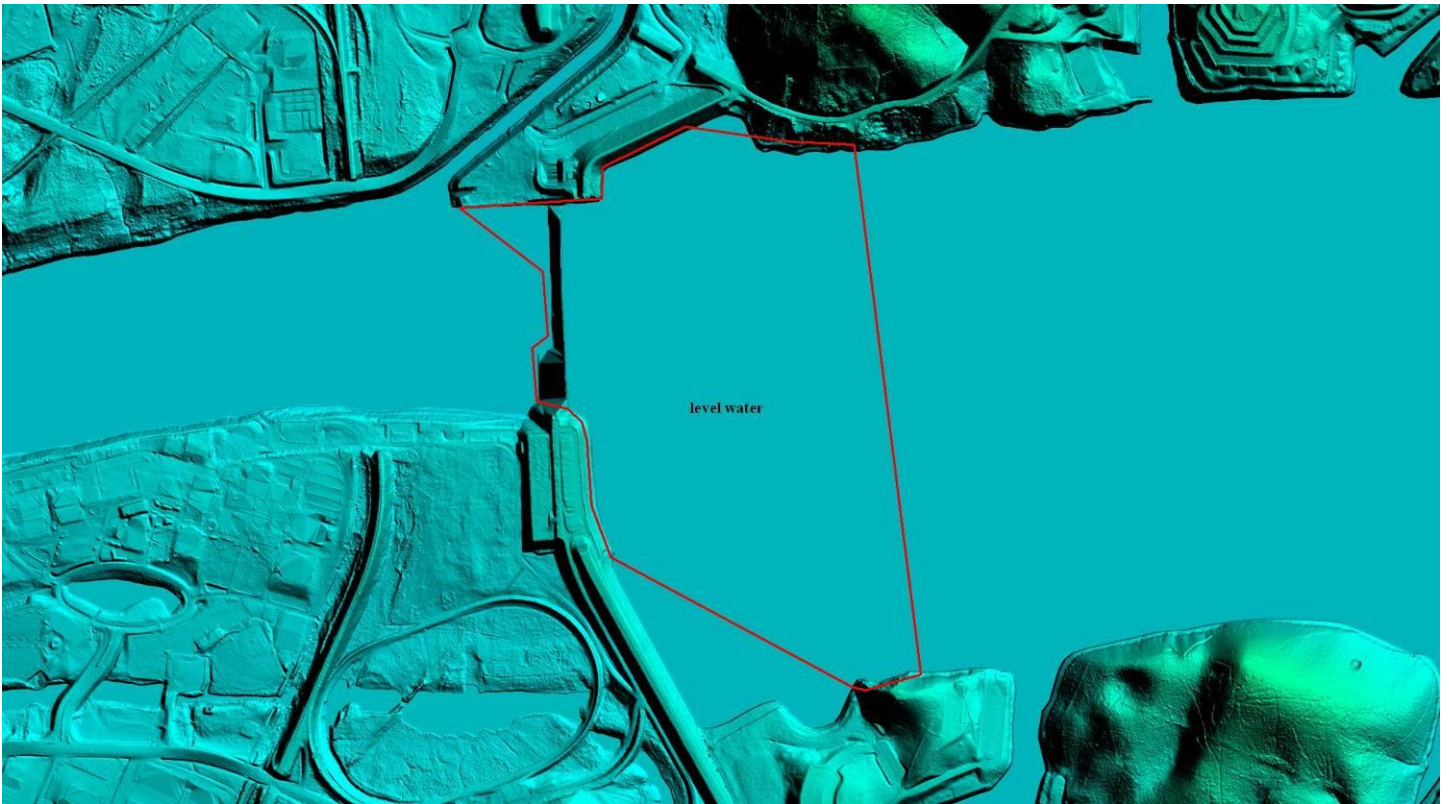
TN. Hamilton County level river 1 (Fixed)



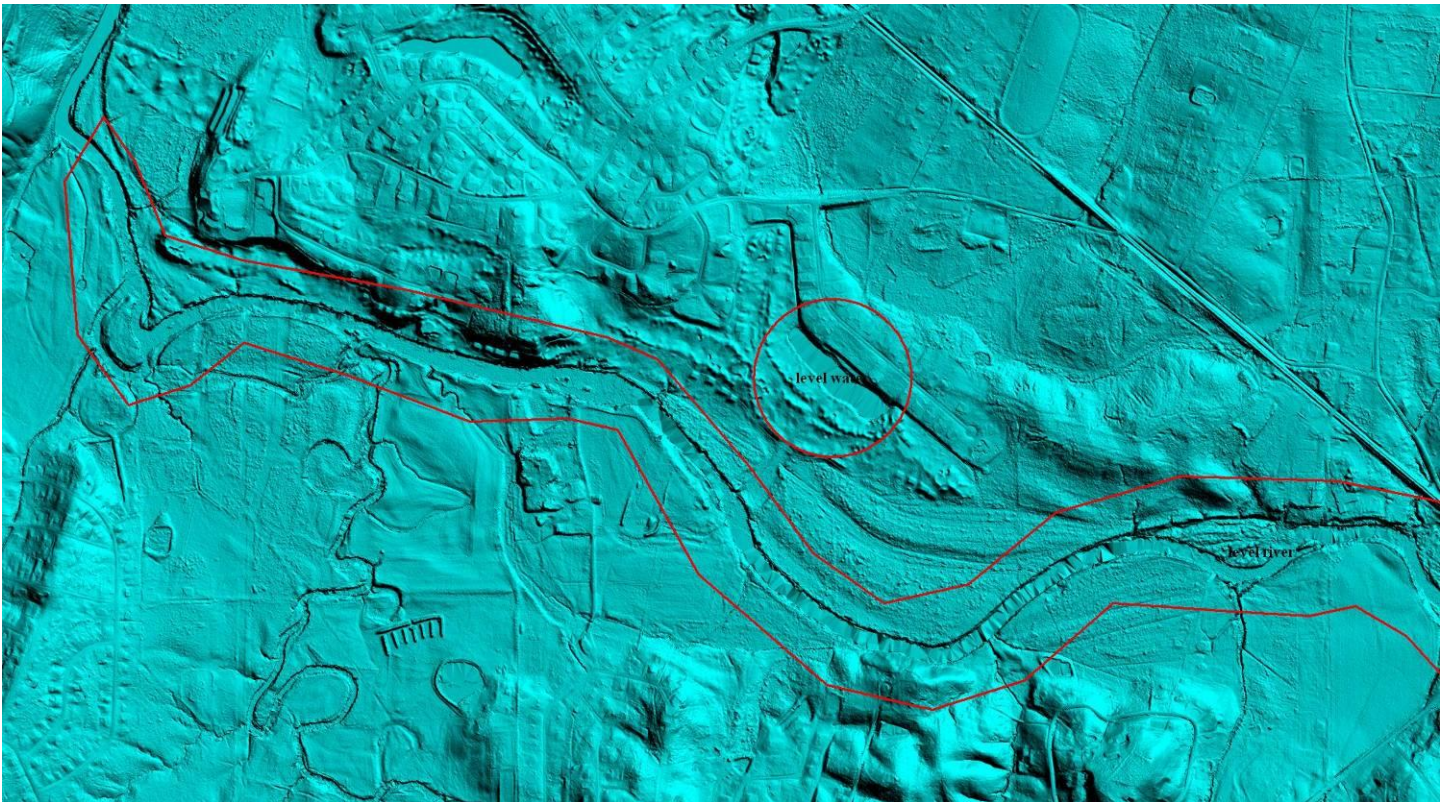
TN. Hamilton County level river 2



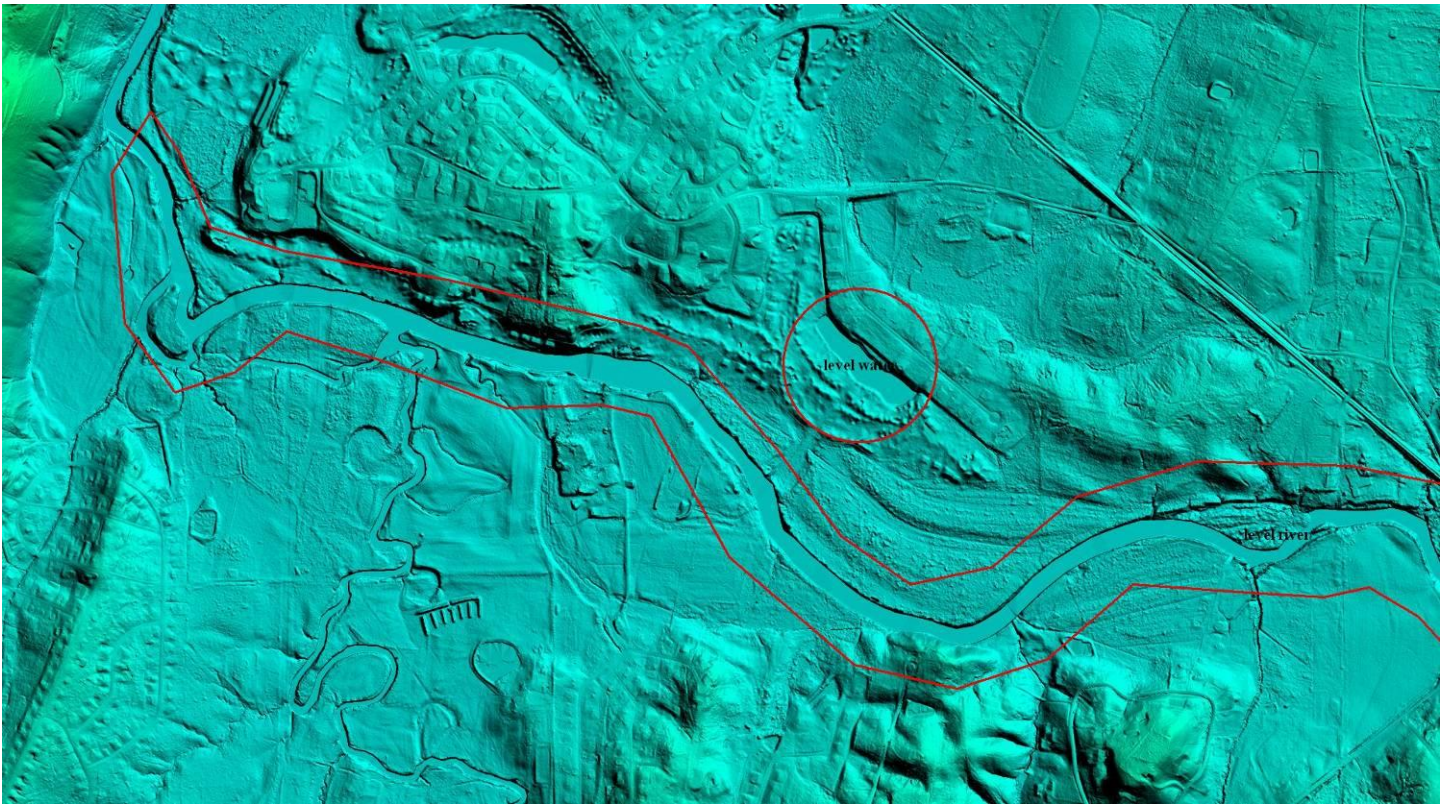
TN. Hamilton County level river 2 (Fixed)



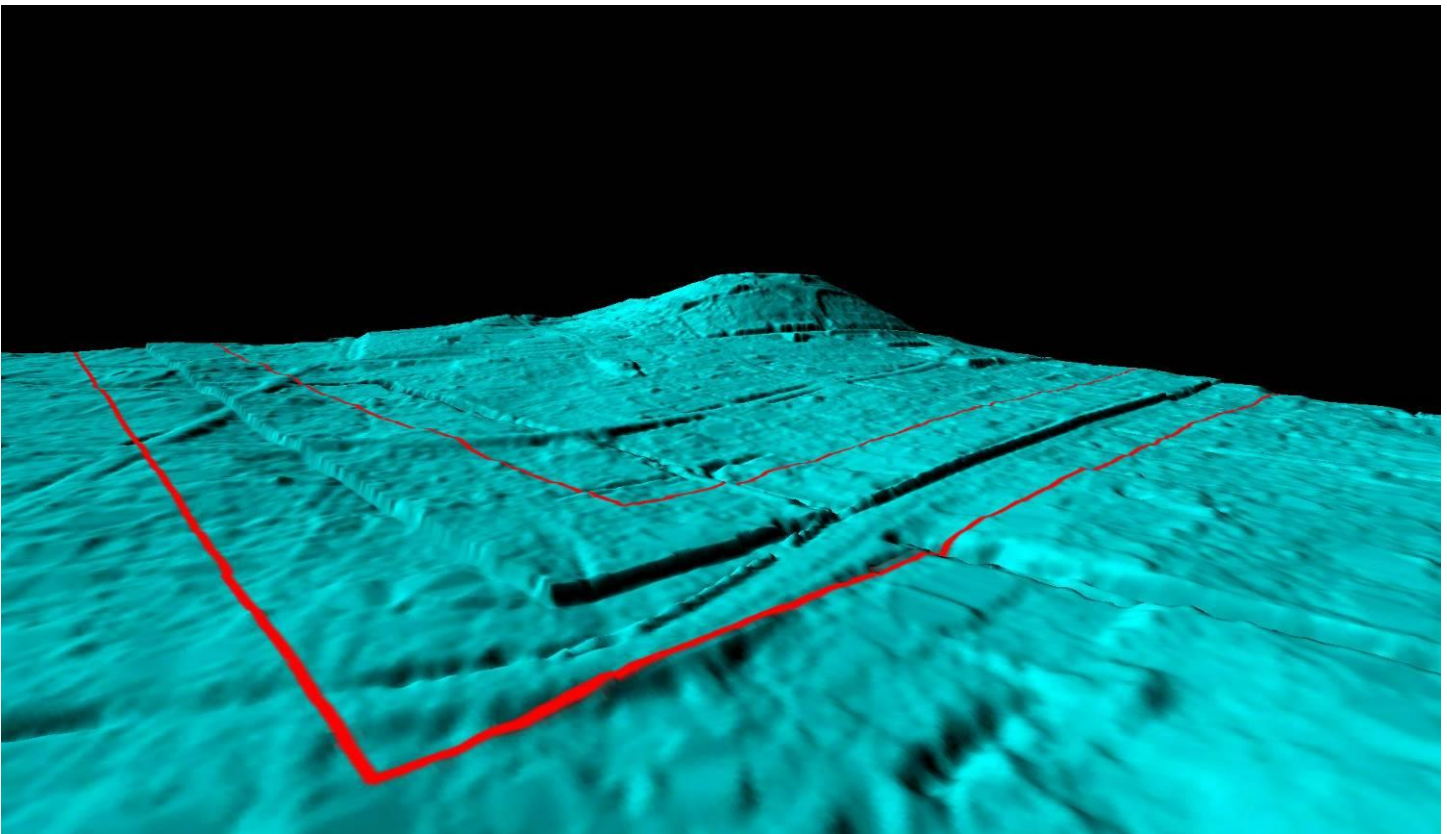
TN. Hamilton County level river and lake



TN. Hamilton County level river and lake (Fixed)



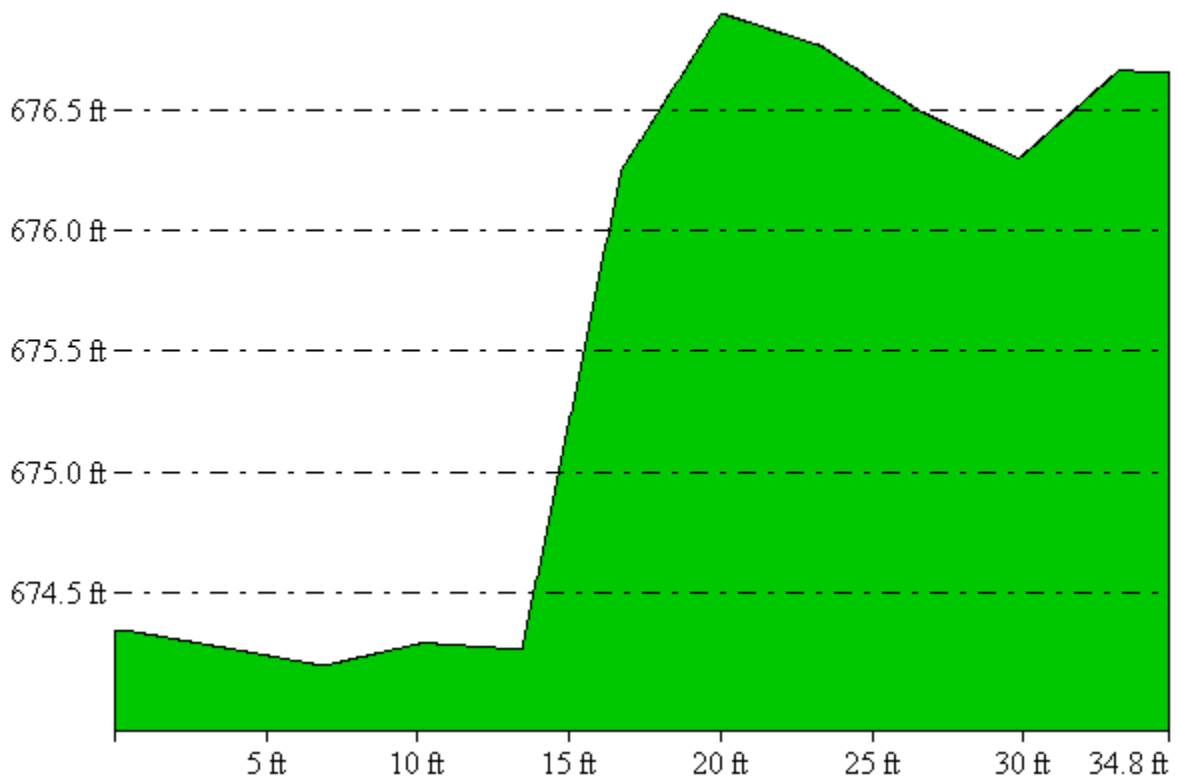
TN. Hamilton County seam line 1



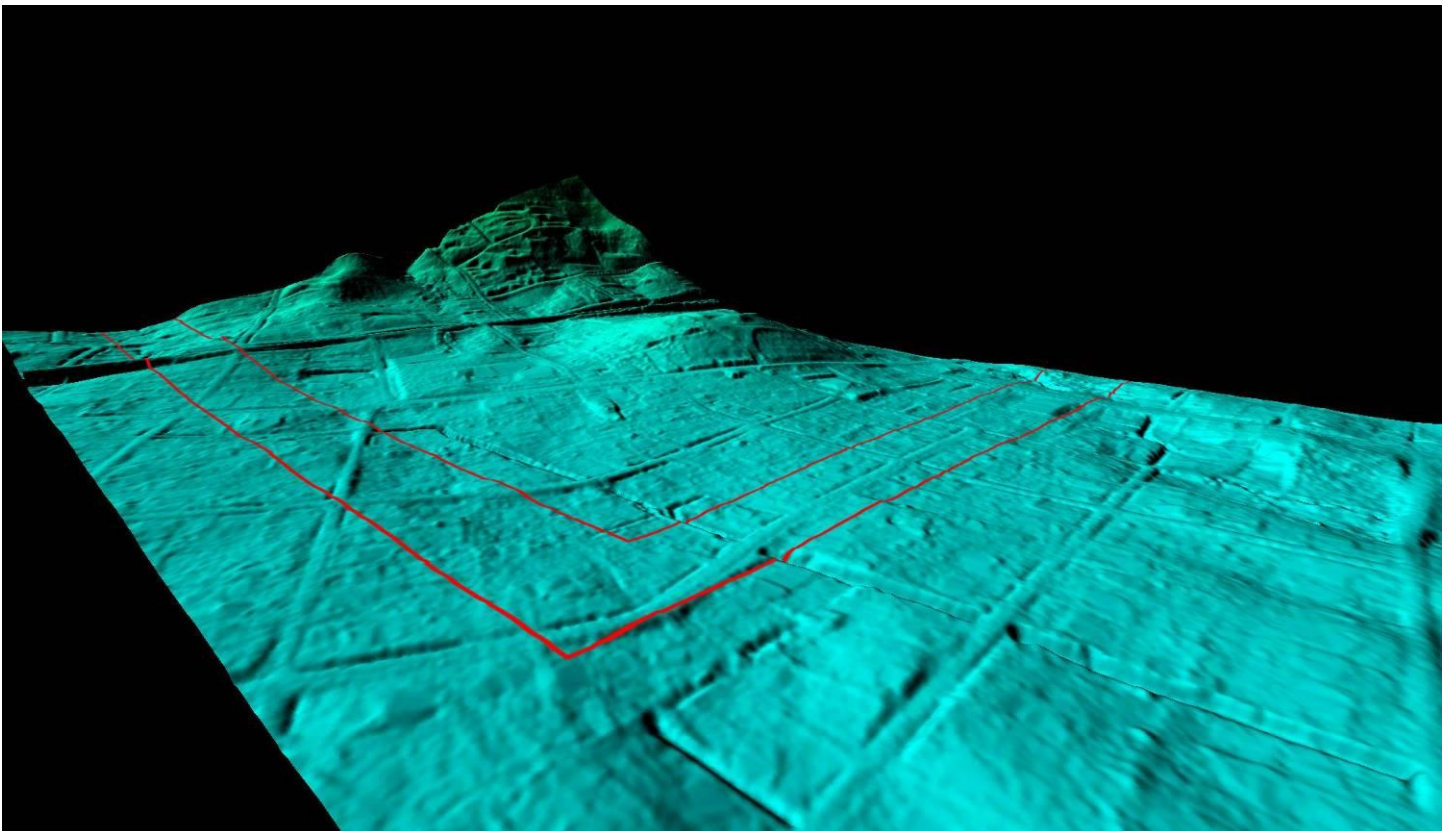
TN. Hamilton County seam line 1 Profile

From Pos: 655495.403, 3871490.700

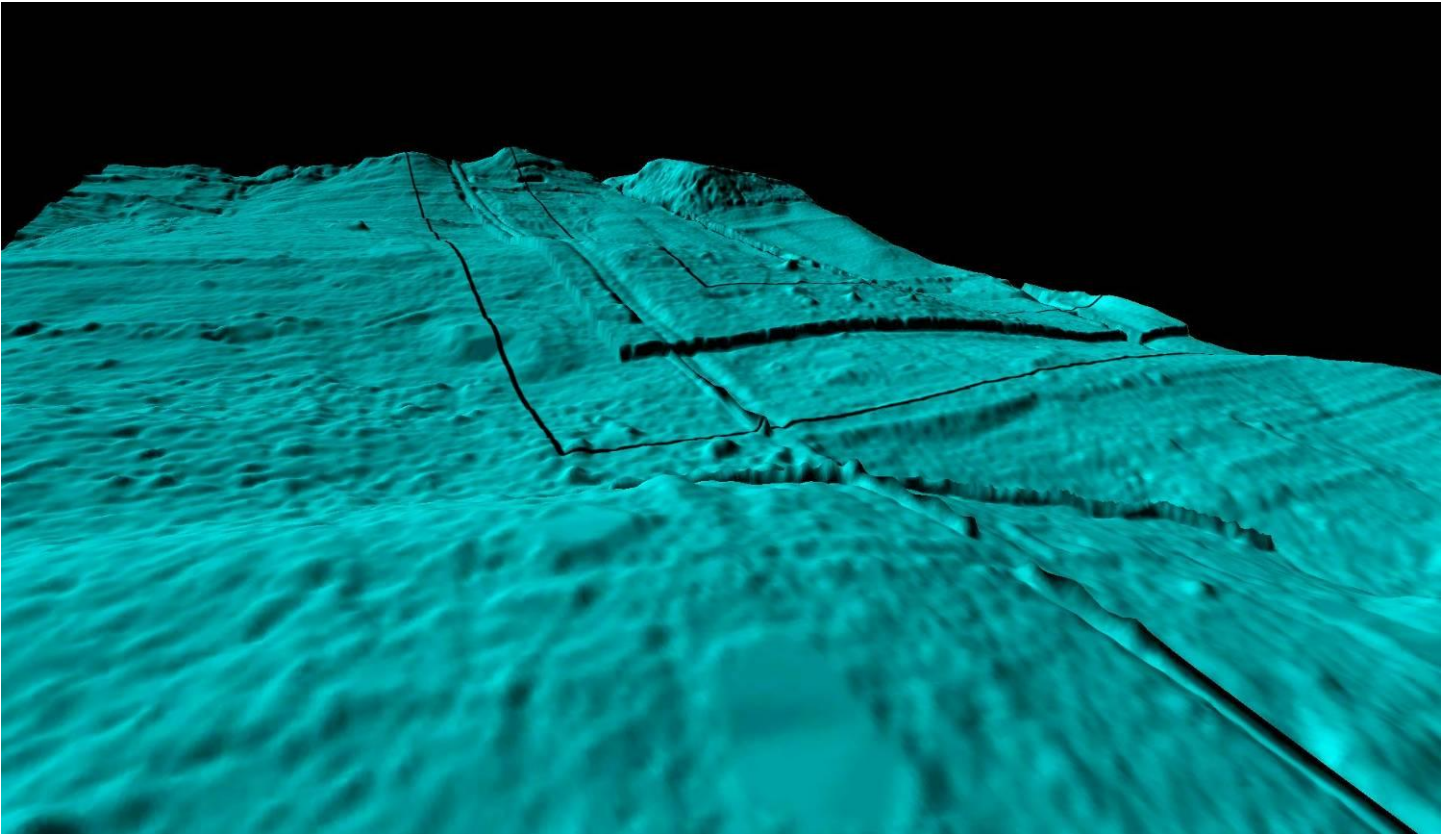
To Pos: 655506.007, 3871490.700



TN. Hamilton County seam line 1 (Fixed)



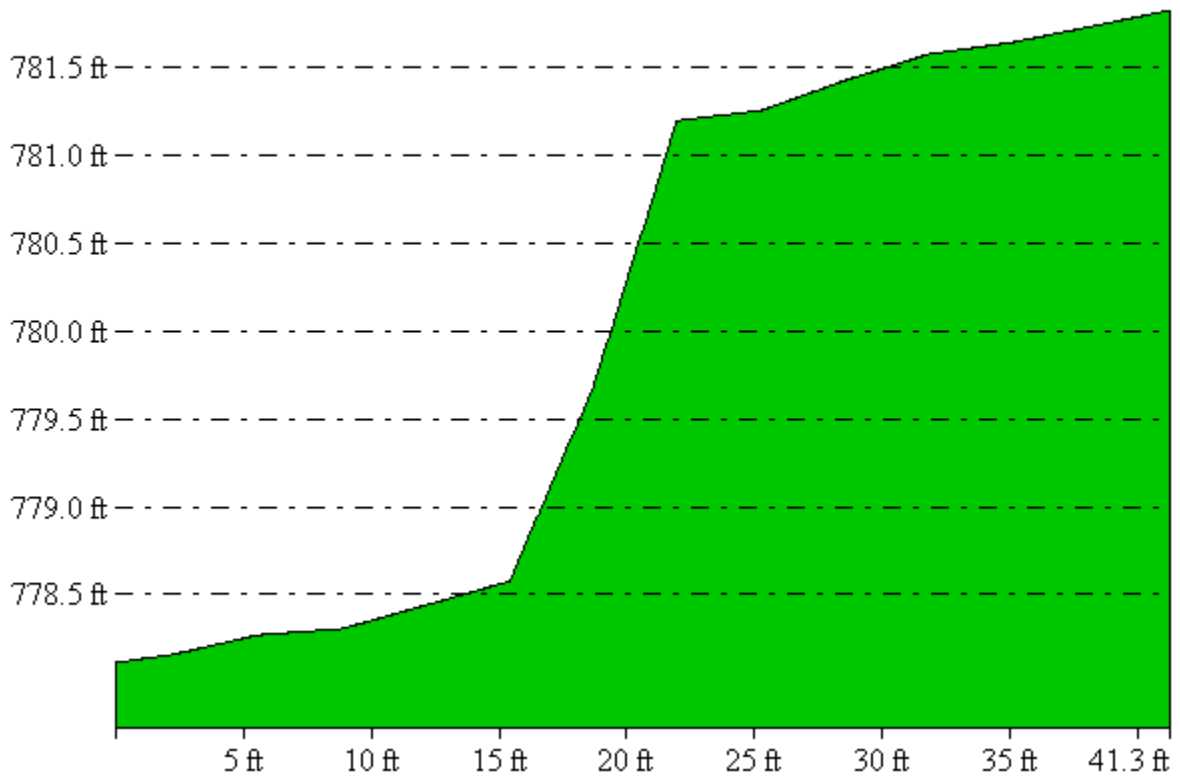
TN. Hamilton County seam line 2



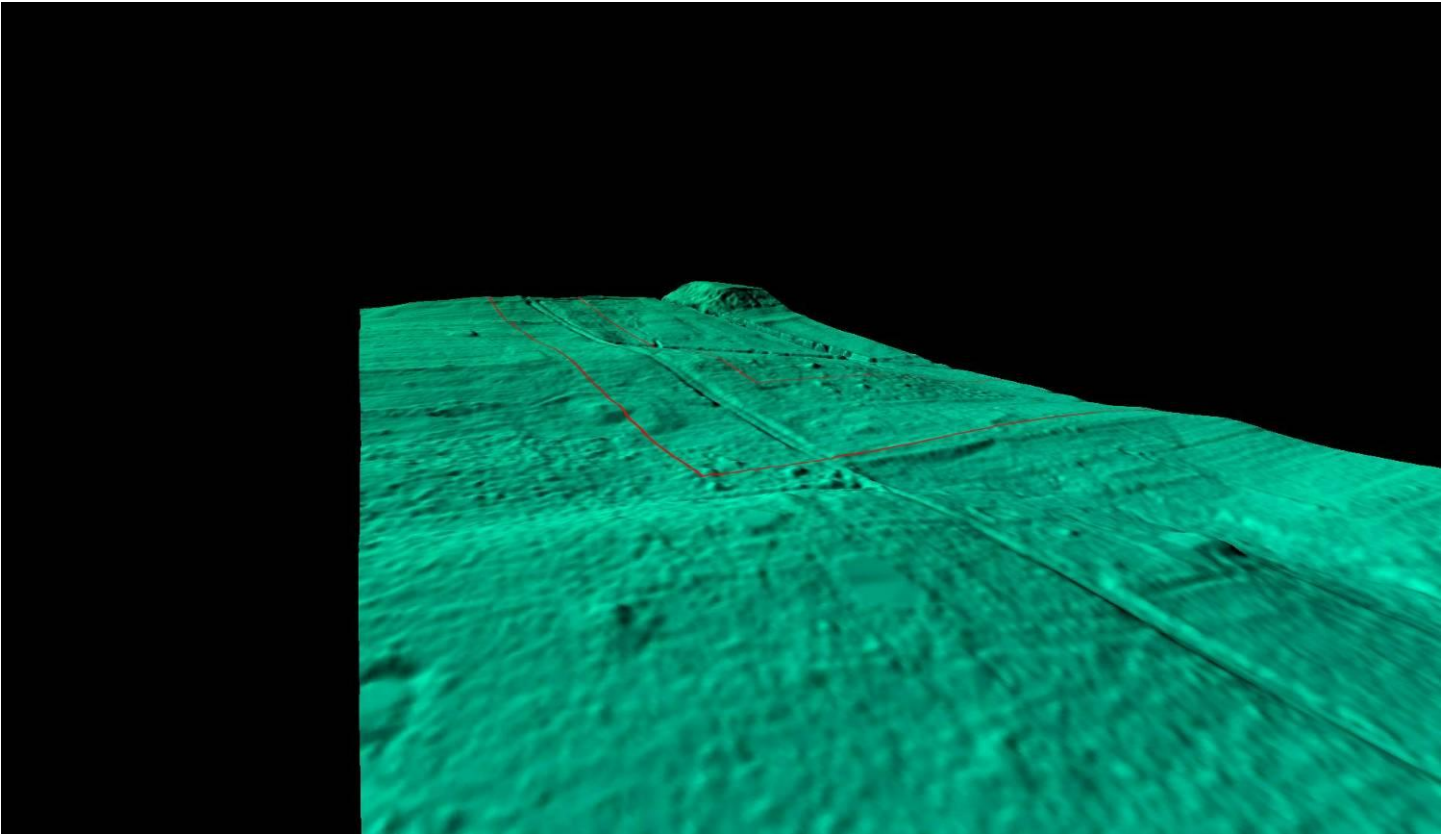
TN. Hamilton County seam line 2 Profile

From Pos: 673494.803, 3869973.395

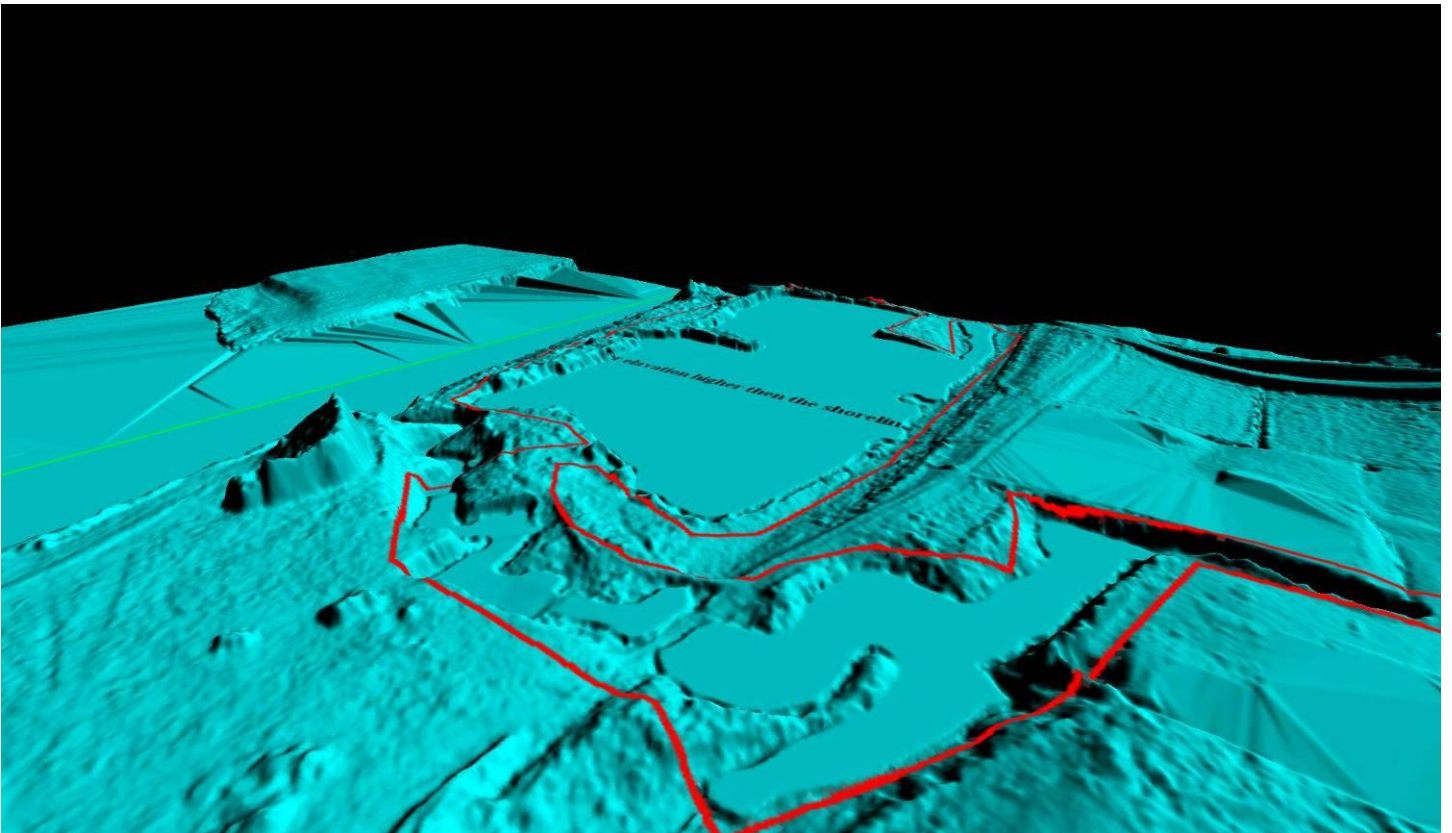
To Pos: 673507.378, 3869973.395



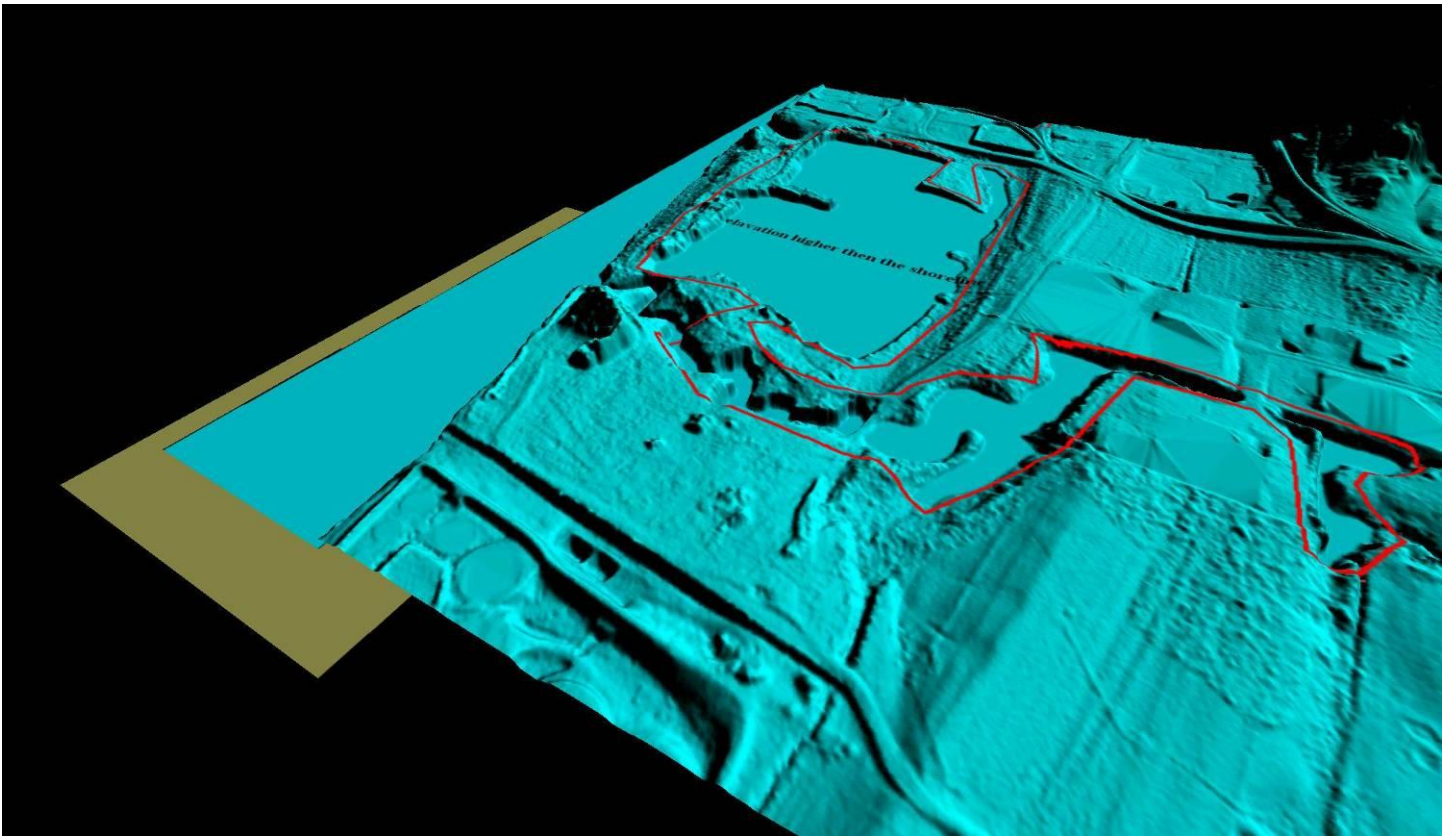
TN. Hamilton County seam line 2 (Fixed)



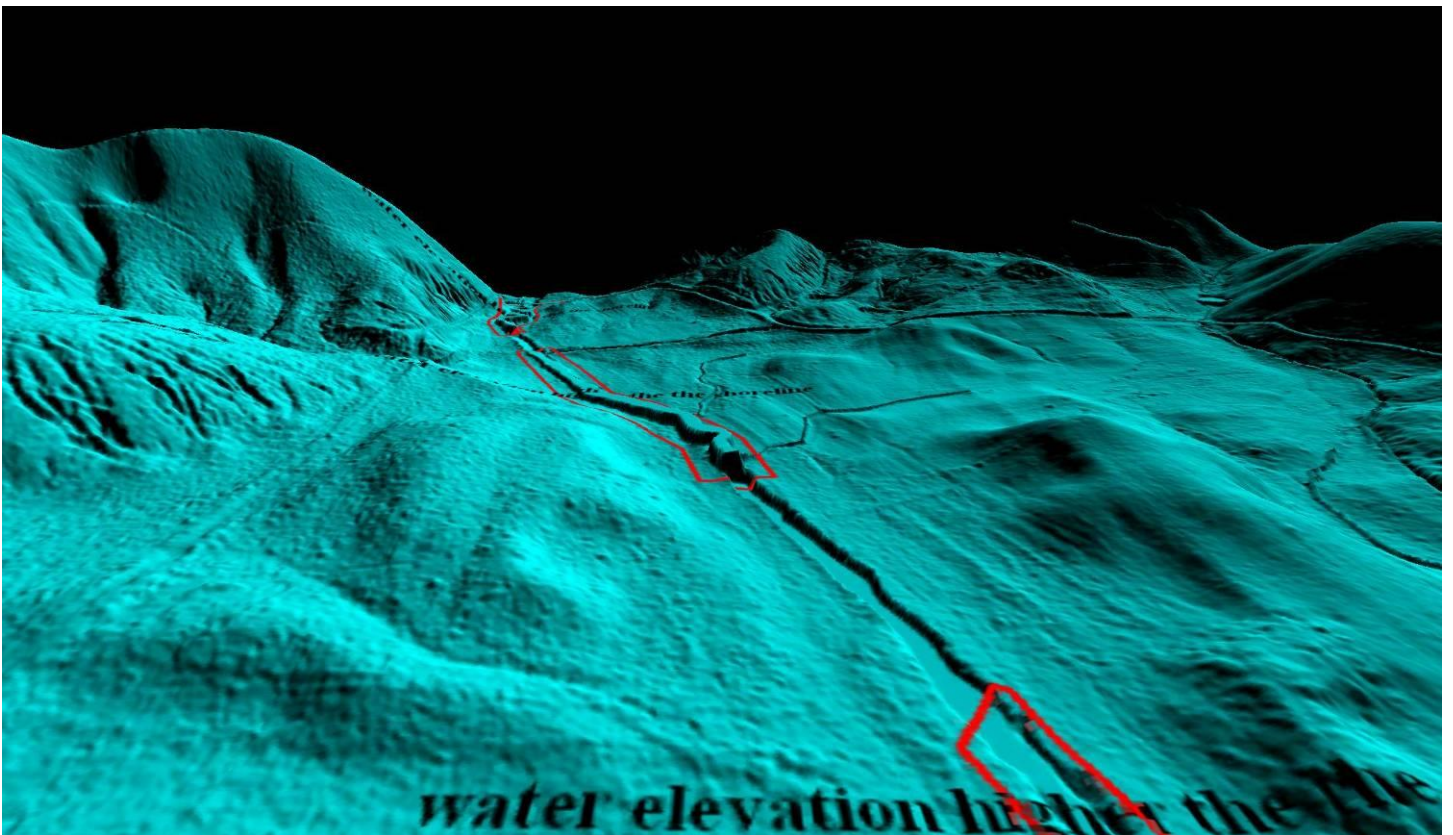
TN. Hamilton County Water elevation is higher than the shoreline 1



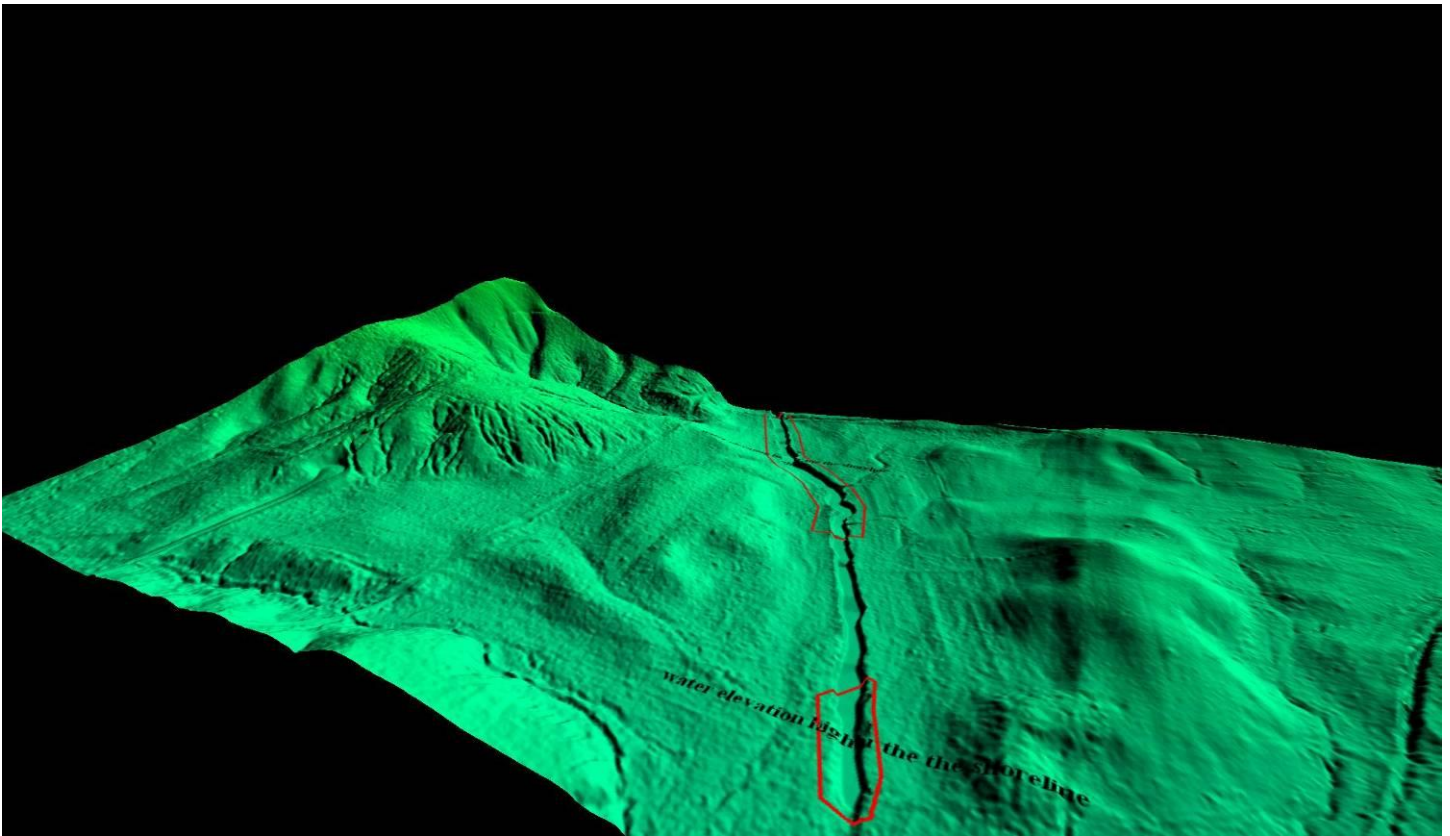
TN. Hamilton County Water elevation is higher then the shoreline 1 (Fixed)



TN. Hamilton County Water elevation is higher then the shoreline 2



TN. Hamilton County Water elevation is higher then the shoreline 2 (Fixed)



TN. Hamilton County CVA, FVA and SVA Control points

