



Dewberry Engineers Inc. | 813.225.1325
1000 North Ashley Drive, Suite 801 | 813.225.1385 fax
Tampa, FL 33602 | www.dewberry.com

USGS FL Hurricane Michael- Final Accuracy Report

Report Produced for U.S. Geological Survey

USGS Contract: G16PC00020

Task Order: 140G0220F0002

Report Date: June 1, 2022

SUBMITTED BY:

Dewberry

1000 North Ashley Drive Suite 801

Tampa, FL 33602

813.225.1325

SUBMITTED TO:

U.S. Geological Survey

tnm_help@usgs.gov

TABLE OF CONTENTS

1. Executive Summary.....	2
1.1 Project Area.....	3
1.2 Coordinate Reference System	3
2. Lidar Positional Accuracy.....	4
2.1 Final Swath Vertical Accuracy Assessment.....	4
2.2 Vertical Accuracy Results.....	6
2.3 Final Horizontal Accuracy Results	7
2.4 Horizontal Accuracy Test Procedures.....	7
2.5 Horizontal Accuracy Results	8
3. DEM Positional Accuracy.....	8
4. Final Accuracy Summary	10

1. EXECUTIVE SUMMARY

The following report documents the comprehensive final project accuracy results for The FL Hurricane Michael lidar project. Preliminary accuracy testing was verified for each WUID to ensure project-wide accuracy would meet specification.

The FL Hurricane Michael lidar project survey report includes all information regarding the survey checkpoints, please refer to that report for details on the survey.

For accuracy testing, Dewberry typically uses LP360 software to test the swath lidar vertical accuracy, Terrascan software to test the classified lidar vertical accuracy, and Esri ArcMap to test the DEM vertical accuracy so that three different software programs are used to validate the vertical accuracy for each project. Below is a description of the types of checkpoints utilized and the acceptable criteria for the FL Hurricane Michael lidar project accuracy requirements.

NVA (Non-vegetated Vertical Accuracy) is determined with checkpoints located only in non-vegetated terrain, including open terrain (grass, dirt, sand, and/or rocks) and urban areas, where there is a very high probability that the lidar sensor will have detected the bare-earth ground surface and where random errors are expected to follow a normal error distribution. The NVA determines how well the calibrated lidar sensor performed. With a normal error distribution, the vertical accuracy at the 95% confidence level is computed as the vertical root mean square error (RMSE_z) of the checkpoints x 1.9600. For the FL Hurricane Michael lidar project, vertical accuracy must be 19.6 cm or less based on an RMSE_z of 10 cm x 1.9600.

VVA (Vegetated Vertical Accuracy) is determined with all checkpoints in vegetated land cover categories, including tall grass, weeds, crops, brush and low trees, and fully forested areas, where there is a possibility that the lidar sensor and post-processing may yield elevation errors that do not follow a normal error distribution. VVA at the 95% confidence level equals the 95th percentile error for all checkpoints in all vegetated land cover categories combined. The FL Hurricane Michael lidar project VVA standard is 30 cm based on the 95th percentile. The VVA is accompanied by a listing of the 5% outliers that are larger than the 95th percentile used to compute the VVA; these are always the largest outliers that may depart from a normal error distribution. Here, Accuracy_z differs from VVA because Accuracy_z assumes elevation errors follow a normal error distribution where RMSE procedures are valid, whereas VVA assumes lidar errors may not follow a normal error distribution in vegetated categories, making the RMSE process invalid. The relevant testing criteria are summarized in Table 1.

Table 1. Acceptance Criteria

Quantitative Criteria	Measure of Acceptability
Non-Vegetated Vertical Accuracy (NVA) in open terrain and urban land cover categories using RMSE _z *1.9600	19.6 cm (based on RMSE _z (10 cm) * 1.9600)
Vegetated Vertical Accuracy (VVA) in all vegetated land cover categories combined at the 95% confidence level	30 cm (based on combined 95 th percentile)

1.1 Project Area

The FL Hurricane Michael lidar project encompasses approximately 8,263 square miles within the state of Florida. The figure below shows the project boundary and the checkpoints that were collected.

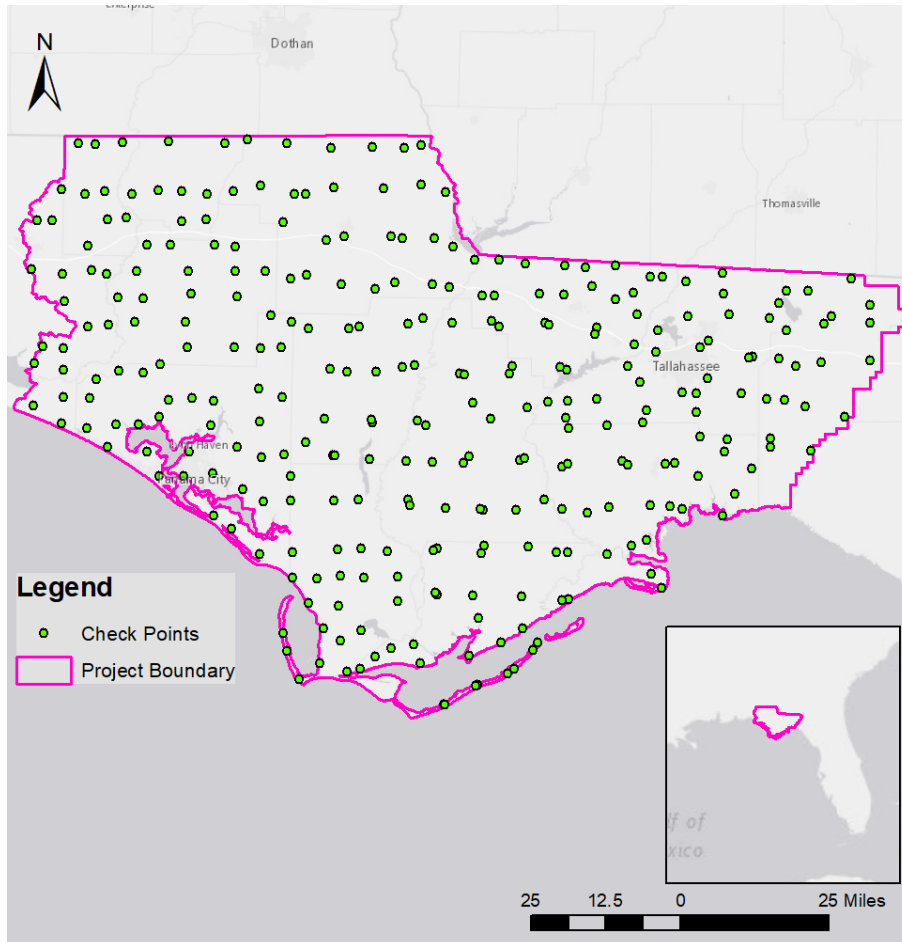


Figure 1. Project map with project boundary outlined and checkpoints displayed.

1.2 Coordinate Reference System

Data produced for the project are delivered in the following spatial reference system:

Horizontal Datum:	North American Datum of 1983 with the 2011 Adjustment (NAD 83 (2011))
Vertical Datum:	North American Vertical Datum of 1988 (NAVD88)
Geoid Model:	Geoid12B
Coordinate System:	State Plane Zone: North
Horizontal Units:	Feet
Vertical Units:	Feet

2. LIDAR POSITIONAL ACCURACY

Dewberry quantitatively tested the dataset by testing the vertical accuracy of the lidar. The vertical accuracy is tested by comparing the discrete measurement of the survey checkpoints to that of the interpolated value within the three closest lidar points that constitute the vertices of a three-dimensional triangular face of the TIN. Therefore, the end result is that only a small sample of the lidar data is actually tested. However, there is an increased level of confidence with lidar data due to the relative accuracy. This relative accuracy in turn is based on how well one lidar point "fits" in comparison to the next contiguous lidar measurement and is verified as part of the initial processing. If the relative accuracy of a dataset is within specifications and the dataset passes vertical accuracy requirements at the location of survey checkpoints, the vertical accuracy results can be applied to the whole dataset with high confidence due to the passing relative accuracy.

2.1 Final Swath Vertical Accuracy Assessment

Dewberry tested the vertical accuracy of the non-vegetated terrain swath data prior to additional processing. Dewberry tested the vertical accuracy of the swath data using the non-vegetated (open terrain and urban) independent survey checkpoints. The vertical accuracy is tested by comparing survey checkpoints in non-vegetated terrain to a triangulated irregular network (TIN) that is created from the raw swath points. Only checkpoints in non-vegetated terrain can be tested against raw swath data because the data has not undergone classification techniques to remove vegetation, buildings, and other artifacts from the ground surface. Checkpoints are always compared to interpolated surfaces from the lidar point cloud because it is unlikely that a survey checkpoint will be located at the location of a discrete lidar point. Dewberry typically uses LP360 software to test the swath lidar vertical accuracy. The table below summarizes the swath project accuracy specification, the amount of NVA points tested, and the final tested swath accuracy results.

Table 2. NVA at 95% Confidence Level for Raw Swaths

100 % of Totals	# of Points	RMSEz (ft) NVA Spec=0.33 ft	NVA- Non-vegetated Vertical Accuracy (RMSEz x 1.9600) Spec=0.64 ft	Mean (ft)	Median (ft)	Skew	Std Dev (ft)	Min (ft)	Max (ft)	Kurtosis
NVA	175	0.18	0.36	-0.08	-0.09	0.22	0.16	-0.45	0.43	0.17

One checkpoint (NVA-83), was remeasured after the initial measurement showed a difference in elevation between the lidar and survey of -4.23 feet. NVA-83 was remeasured in May 2022, and the new measurement showed a considerably smaller difference of 0.43 feet.

Table 3. Checkpoint NVA-83 at Initial Survey

Point ID	NAD83(2011) State Plane Florida North		NAVD88 (Geoid 12B)	Lidar Z (ft)	Delta Z	AbsDeltaZ
	Easting X (ft)	Northing Y (ft)	Survey Z (ft)			
NVA-83	2097034.81	532527.07	51.29	55.52	-4.23	4.23

Table 4. Checkpoint NVA-83 After Remeasurement

Point ID	NAD83(2011) State Plane Florida North		NAVD88 (Geoid 12B)	Lidar Z (ft)	Delta Z	AbsDeltaZ
	Easting X (ft)	Northing Y (ft)	Survey Z (ft)			
NVA-83	2097035.60	532529.42	55.83	55.52	-0.43	0.43

2.2 Vertical Accuracy Results

The table below summarizes the tested vertical accuracy resulting from a comparison of the surveyed checkpoints to the elevation values present within the fully classified lidar LAS files.

Table 5. Tested NVA and VVA

Land Cover Category	# of Points	NVA — Non-vegetated Vertical Accuracy (RMSE _z x 1.9600) Spec=0.64 ft	VVA — Vegetated Vertical Accuracy (95th Percentile) Spec=0.96 ft
NVA	175	0.37	
VVA	126		0.52

This lidar dataset was tested to meet ASPRS Positional Accuracy Standards for Digital Geospatial Data (2014) for a 10 cm RMSE_z Vertical Accuracy Class. Actual NVA accuracy was found to be RMSE_z =5.7 cm, equating to +/- 11.2 cm at 95% confidence level. Actual VVA accuracy was found to be +/- 15.9 cm at the 95th percentile.

Table 6 lists the 5% outliers that are larger than the VVA 95th percentile.

Table 6. 5% Outliers

Point ID	NAD83(2011) State Plane Florida North		NAVD88 (Geoid 12B)	Lidar Z (ft)	Delta Z	AbsDeltaZ
	Easting X (ft)	Northing Y (ft)	Survey Z (ft)			
VVA-14	1580817.03	631713.12	84.56	85.15	0.59	0.59
VVA-65	1578783.55	494207.28	40.65	41.19	0.54	0.54
VVA-104	1659982.48	357798.98	19.20	19.74	0.54	0.54
VVA-112	1752155.62	337221.52	13.87	14.52	0.65	0.65
VVA-19	1872434.13	618452.34	273.46	274.04	0.59	0.59
VVA-69	1806943.71	472110.56	53.09	53.79	0.70	0.70

Table 7 provides overall descriptive statistics.

Table 7. Overall Descriptive Statistics

100 % of Totals	# of Points	RMSEz (m) NVA Spec=0.33 ft	Mean (ft)	Median (ft)	Skew	Std Dev (ft)	Kurtosis	Min (ft)	Max (ft)
NVA	175	0.19	-0.10	-0.11	0.24	0.16	0.20	-0.45	0.43
VVA	126	N/A	0.04	-0.01	1.03	0.25	2.17	-0.46	1.07

2.3 Final Horizontal Accuracy Results

Dewberry tests the horizontal accuracy of lidar datasets when checkpoints are photo-identifiable in the intensity imagery. Photo-identifiable checkpoints in intensity imagery typically include checkpoints located at the ends of paint stripes on concrete or asphalt surfaces or checkpoints located at 90-degree corners of different reflectivity, e.g. a sidewalk corner adjoining a grass surface. The XY coordinates of checkpoints, as defined in the intensity imagery, are compared to surveyed XY coordinates for each photo-identifiable checkpoint. These differences are used to compute the tested horizontal accuracy of the lidar. As not all projects contain photo-identifiable checkpoints, the horizontal accuracy of the lidar cannot always be tested.

2.4 Horizontal Accuracy Test Procedures

Horizontal accuracy testing requires well-defined checkpoints that can be identified in the dataset. Elevation datasets, including lidar datasets, do not always contain well-defined checkpoints suitable for horizontal accuracy assessment. However, the ASPRS Positional Accuracy Standards for Digital Geospatial Data (2014) recommends at least half of the NVA vertical checkpoints should be located at the ends of paint stripes or other point features visible on the lidar intensity image, allowing them to double as horizontal checkpoints.

Dewberry reviews all NVA checkpoints to determine which, if any, of these checkpoints are located on photo-identifiable features in the intensity imagery. This subset of checkpoints are then used for horizontal accuracy testing.

The primary QA/QC horizontal accuracy testing steps used by Dewberry are summarized as follows:

1. Dewberry's team surveyed QA/QC vertical checkpoints in accordance with the project's specifications and tried to locate half of the NVA checkpoints on features photo-identifiable in the intensity imagery.
2. Next, Dewberry identified the well-defined features in the intensity imagery.
3. Dewberry then computed the associated xy-value differences between the coordinates of the well-defined feature in the lidar intensity imagery and the ground truth survey checkpoints.
4. The data were analyzed by Dewberry to assess the accuracy of the data. Horizontal accuracy was assessed using NSSDA methodology where horizontal accuracy is calculated at the 95% confidence level. This report provides the results of the horizontal accuracy testing.

2.5 Horizontal Accuracy Results

Forty-six checkpoints were determined to be photo-identifiable in the intensity imagery and were used to test the horizontal accuracy of the lidar dataset.

Using NSSDA methodology (endorsed by the ASPRS Positional Accuracy Standards for Digital Geospatial Data (2014)), horizontal accuracy at the 95% confidence level (called ACCURACY_r) is computed by the formula $RMSE_r * 1.7308$ or $RMSE_x * 2.448$.

This project was required to meet a horizontal accuracy of 1 meter or less at the 95% confidence level.

Table 8. Tested horizontal accuracy at the 95% confidence level

# of Points	RMSE _x (Spec=1.34 ft)	RMSE _y (Spec=1.34 ft)	RMSE _r (Spec=1.9 ft)	ACCURACY _r (RMSE _r x 1.7308) Spec=3.28 ft
46	0.63	0.48	0.79	1.38

Forty-six checkpoints were used for horizontal accuracy testing. This data set was tested to meet ASPRS Positional Accuracy Standards for Digital Geospatial Data (2014) for a 41 cm RMSE_x/RMSE_y Horizontal Accuracy Class which equates to Positional Horizontal Accuracy = +/- 1 meter at a 95% confidence level. Actual positional accuracy of this dataset was found to be RMSE_x = 19.3 cm and RMSE_y = 14.6 cm which equates to +/- 41.9 cm at 95% confidence level.

3. DEM POSITIONAL ACCURACY

The same checkpoints that were used to test the vertical accuracy of the lidar were used to validate the vertical accuracy of the final DEM products as well. Accuracy results may vary between the source lidar and final DEM deliverable. DEMs are created by averaging several lidar points within each pixel which may result in slightly different elevation values at each survey checkpoint when compared to the source LAS, which does not average several lidar points together but may interpolate (linearly) between two or three points to derive an elevation value. The vertical accuracy of the DEM is tested by extracting the elevation of the pixel that contains the x/y coordinates of the checkpoint and comparing these DEM elevations to the surveyed elevations.

Table 9 summarizes the tested vertical accuracy results from a comparison of the surveyed checkpoints to the elevation values present within the final DEM dataset.

Table 9. DEM tested NVA and VVA

6/1/2022

Land Cover Category	# of Points	NVA — Non-vegetated Vertical Accuracy (RMSE _z x 1.9600) Spec=0.64 ft	VVA — Vegetated Vertical Accuracy (95th Percentile) Spec=0.96 ft
NVA	175	0.36	
VVA	126		0.51

This DEM dataset was tested to meet ASPRS Positional Accuracy Standards for Digital Geospatial Data (2014) for a 10 cm RMSE_z Vertical Accuracy Class. Actual NVA accuracy was found to be RMSE_z =5.7 cm, equating to +/- 11.1 cm at 95% confidence level. Actual VVA accuracy was found to be +/- 15.7 cm at the 95th percentile.

Table 10 lists the 5% outliers that are larger than the VVA 95th percentile.

Table 10. 5% Outliers

Point ID	NAD83(2011) Florida State Plane North		NAVD88 (Geoid 12B)	DEM Z (ft)	Delta Z	AbsDeltaZ
	Easting X (ft)	Northing Y (ft)	Survey Z (ft)			
VVA-14	1580817.02	631713.12	84.56	85.09	0.53	0.53
VVA-104	1659982.48	357798.98	19.20	19.78	0.58	0.58
VVA-19	1872434.12	618452.34	273.45	274.05	0.60	0.60
VVA-65	1578783.55	494207.28	40.64	41.18	0.53	0.53
VVA-69	1806943.71	472110.56	53.09	53.79	0.69	0.69
VVA-112	1752155.61	337221.51	13.86	14.46	0.60	0.60

Table 11 provides overall descriptive statistics.

Table 11. Overall Descriptive Statistics

100 % of Totals	# of Points	RMSE _z (ft)	Mean (ft)	Median (ft)	Skew	Std Dev (ft)	Kurtosis	Min (ft)	Max (ft)
NVA	175.00	0.19	-0.10	-0.11	0.39	0.16	0.51	-0.46	0.44

VVA	126.00	N/A	0.04	0.00	0.97	0.24	1.68	-0.40	1.03
-----	--------	-----	------	------	------	------	------	-------	------

4. FINAL ACCURACY SUMMARY

Based on the accuracy testing conducted by Dewberry, the lidar and DEM dataset for the FL Hurricane Michael lidar project satisfies the project's pre-defined accuracy criteria as described throughout this report.