



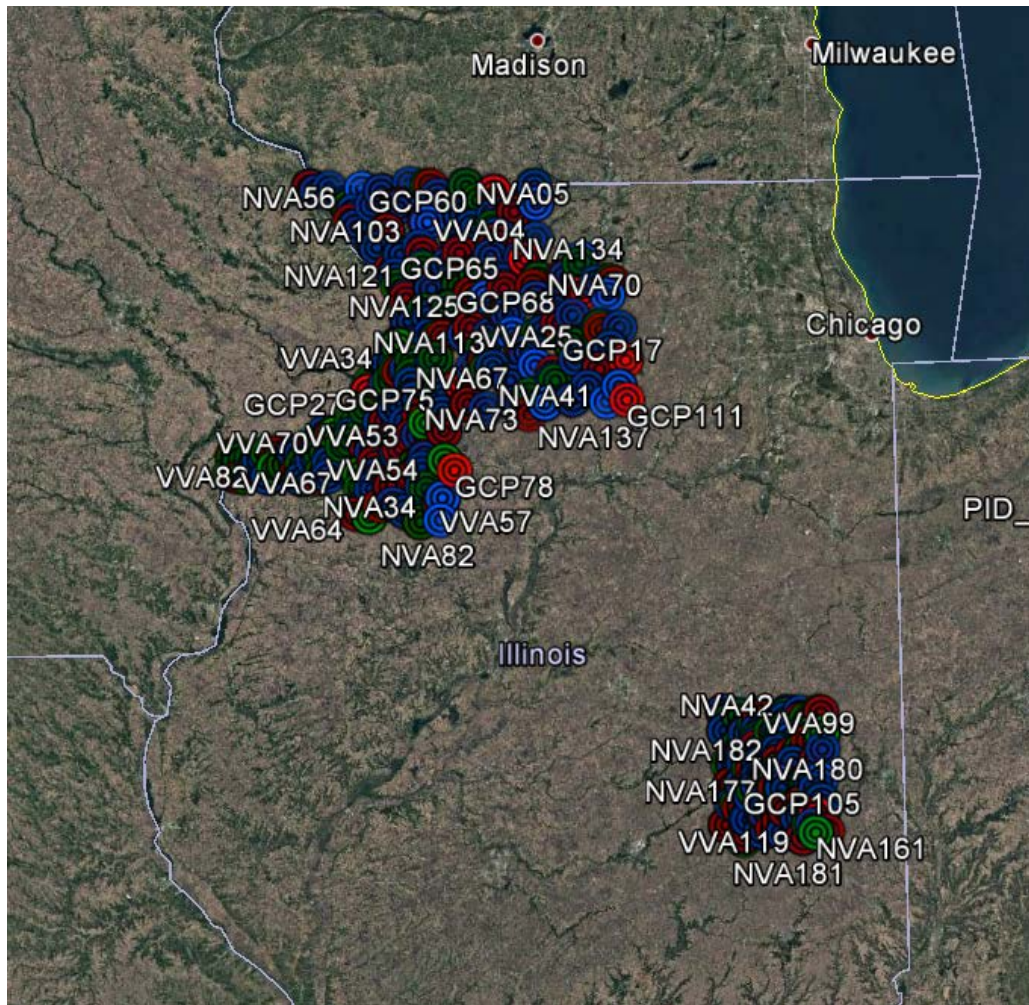
SAM, LLC
1224 Fern Ridge Parkway, Suite 110, St. Louis, MO 63141
Ofc 314.576.9878 Fax 314.576.9922
info@sam.biz www.sam.biz

Surveying and Mapping, LLC Project
USGS Contract: USGS CONTRACT: G17PC00007 Task Order: 140G0219F0059-
IL_8County_PlusChampaign_2019_B19
Professional Surveying Services: Aerial Control Surveys

Survey Report

Purpose:

Surveying & Mapping, LLC was contracted by Aerial Surveys, Inc. to provide LiDAR calibration and validation points for Project control surveys located in Jo Daviess, Stephenson, Carroll, Ogle, Whiteside, Lee, Rock Island, Henry, and Champaign Counties, Illinois.



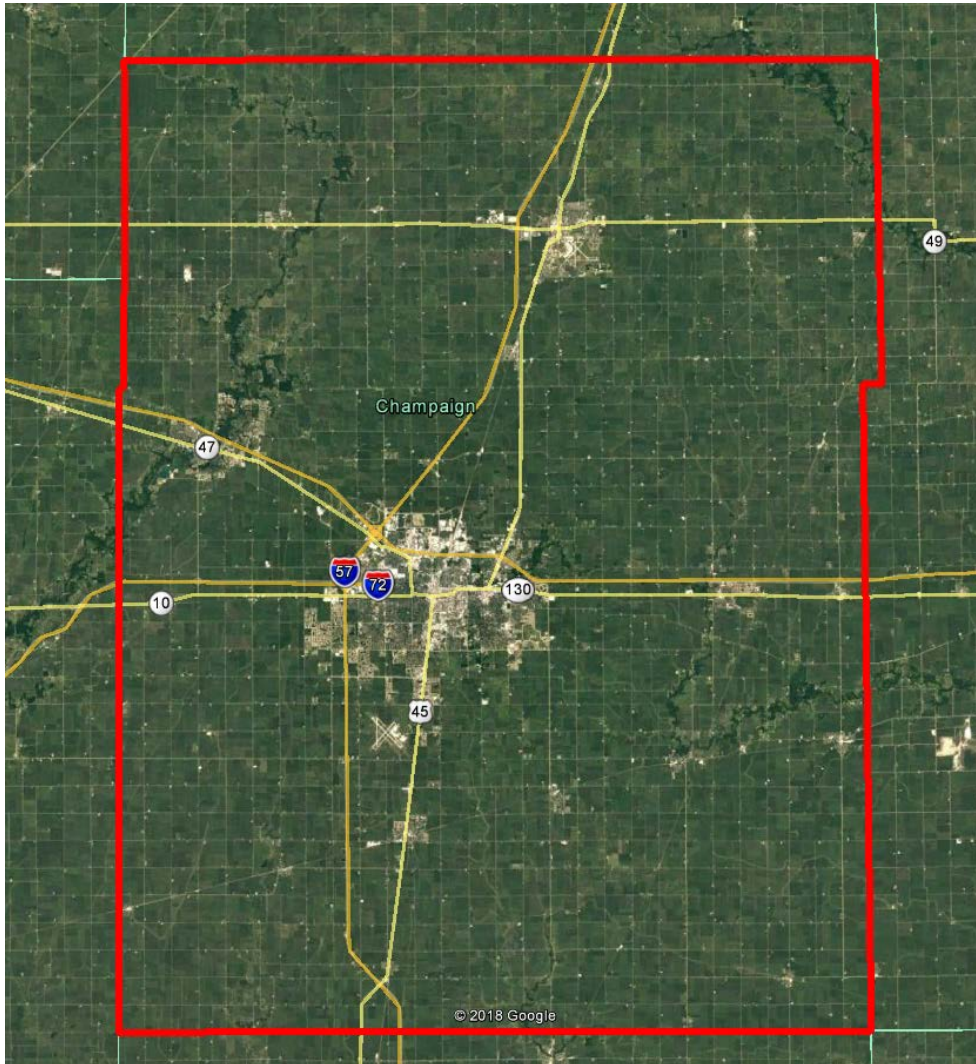


Survey Report Index

Subject	Page
Project Location Map (Counties)	3-4
Survey Report	5-6
Vector List 95% Confidence Level 8 Counties, IL West Zone	8-34
Vector List 95% Confidence Level Champaign, IL East Zone	35-46
Ground Control Photos	48-103
Non-Vegetated Photos	104-200
Vegetated Photos	201-269



EXHIBIT B: Champaign County, Illinois.





8 Counties:

Jo Daviess, Stephenson, Carroll, Ogle, Whiteside, Lee, Rock Island, Henry

Horizontal Datum & Coordinate System: US State Plane 1983, Illinois West 1202, NAD 1983

Vertical Datum & Geoid Model: NAVD 88, Geoid 12B

Units: US Survey Foot = 1200/3937

Champaign County, Illinois.

Horizontal Datum & Coordinate System: US State Plane 1983, Illinois East 1202, NAD 1983

Vertical Datum & Geoid Model: NAVD 88, Geoid 12B

Units: US Survey Foot = 1200/3937

Control Points

110 Photo Identifiable Ground Control Points (GCP)

320 Non-Vegetated Ground Validation Points (NVA) & Vegetated Ground Validation Points (VVA)

Method:

The GCP, NVA, and VVA validation points were established using GPS methodology by survey field crews utilizing Trimble R10 GNSS receivers. Utilizing real time corrections from VRS (Virtual Reference Stations) crews performed measurements in accordance with prescribed accuracies at a 95% confidence level. Accuracies were verified in field real time and later verified in Trimble Business Center V4.10.

To ensure a high quality check on each control point, two independent measurements were observed at each control point, each consisting of 120 epochs. Additional 120 epoch observations were observed in the even the first two measurements fell below the project accuracy requirements. Trimble's VRS Now Real Time Network was utilized for corrections. The VRS measurements were independently processed in Trimble Business Center to optimize the standard deviation of measurements.

Notes:

- 1) Vector Processing Settings: 10° or higher elevation mask
- 2) Baselines from the averaged coordinate were then reprocessed.

**Personnel:**

A. Wesley	Project Manager
P. De Klerk	Processing and Report Preparation
J. Callahan	Field Party Chief, data and photo collection
A. Lagios	Field Party Chief, data and photo collection
T. Kline	Field Party Chief, data and photo collection

Equipment:

Trimble R-10 GNSS Receiver: S/N 5339444232
Trimble R-10 GNSS Receiver: S/N 5425469008
Trimble R-10 GNSS Receiver: S/N 5425468925
Trimble R-10 GNSS Receiver: S/N 5326439501
Panasonic FZ-G1 Data Collector's
Smartphones for georeferenced and high definition photographs.

VRS Stations used:Champaign County, Illinois.

PRS336744033606
PRS19733588799
PRS815686591658

8 Counties, Illinois.

IA_Bettendorf
IL_Morrison
IL_Toulon
PRS400074536884
PRS555753813435
PRS631276951768
PRS693183039848
PRS810430617562
PRS831957994173
PRS836498345741

Software:

Trimble Business Center v4.10
Microsoft Office
Google Earth Pro
BlueBeam Revu



This page is left blank intentionally.



SAM, LLC
 1224 Fern Ridge Parkway, Suite 110, St. Louis, MO 63141
 Ofc 314.576.9878 Fax 314.576.9922
 info@sam.biz www.sam.biz

8 Counties Illinois West Zone

Vector ID	From	To	Solution Type	Status	PDOP	H. Precision (95%)	V. Precision (95%)	Satellites	Epochs
V1	PRS836498345741	NVA36	RTK	Enabled	1.74	0.032	0.066	14	120
V2	PRS836498345741	NVA36	RTK	Enabled	2.1	0.036	0.072	12	120
V3	PRS836498345741	VVA64	RTK	Enabled	1.67	0.034	0.053	14	120
V4	PRS836498345741	VVA64	RTK	Enabled	1.48	0.065	0.093	13	120
V5	PRS836498345741	GCP36	RTK	Enabled	1.97	0.033	0.046	14	120
V6	PRS836498345741	GCP36	RTK	Enabled	1.88	0.026	0.036	13	120
V7	PRS836498345741	VVA65	RTK	Enabled	1.35	0.069	0.082	15	120
V8	PRS836498345741	VVA65	RTK	Enabled	1.29	0.081	0.096	17	120
V9	PRS836498345741	VVA65	RTK	Enabled	1.44	0.056	0.067	16	120
V10	PRS836498345741	NVA84	RTK	Enabled	1.56	0.044	0.052	15	120
V11	PRS836498345741	NVA84	RTK	Enabled	1.48	0.042	0.05	15	120
V12	PRS836498345741	NVA84	RTK	Enabled	1.48	0.042	0.052	15	120
V13	PRS836498345741	NVA84	RTK	Enabled	1.62	0.041	0.053	14	120
V14	PRS836498345741	GCP79	RTK	Enabled	1.35	0.036	0.054	16	120
V15	PRS836498345741	GCP79	RTK	Enabled	1.41	0.036	0.055	15	120
V16	PRS836498345741	GCP79	RTK	Enabled	1.41	0.034	0.052	15	120
V17	PRS836498345741	GCP79	RTK	Enabled	1.43	0.034	0.047	15	120
V18	PRS695613626927	NVA87	RTK	Enabled	1.28	0.049	0.056	16	120
V19	PRS695613626927	NVA87	RTK	Enabled	1.43	0.057	0.064	16	120
V20	PRS836498345741	NVA87	RTK	Enabled	1.56	0.054	0.062	16	120
V21	PRS836498345741	NVA87	RTK	Enabled	1.2	0.051	0.056	17	120
V22	IL_Toulon	VVA63	RTK	Enabled	2.74	0.076	0.09	13	120
V23	IL_Toulon	VVA63	RTK	Enabled	2.15	0.084	0.09	12	99
V25	IL_Toulon	NVA83	RTK	Enabled	1.64	0.054	0.087	13	120
V26	IL_Toulon	NVA83	RTK	Enabled	1.64	0.041	0.067	13	120
V27	IL_Toulon	NVA83	RTK	Enabled	1.99	0.045	0.076	12	120
V28	IL_Toulon	NVA83	RTK	Enabled	2.08	0.049	0.083	12	120
V29	IL_Toulon	NVA35	RTK	Enabled	1.62	0.043	0.071	13	120
V30	IL_Toulon	NVA35	RTK	Enabled	1.61	0.045	0.074	13	120



V31	IL_Toulon	NVA35	RTK	Enabled	1.85	0.04	0.066	13	120
V32	IL_Toulon	GCP35	RTK	Enabled	1.4	0.043	0.07	13	120
V33	IL_Toulon	GCP35	RTK	Enabled	1.4	0.045	0.061	13	120
V34	IL_Toulon	GCP35	RTK	Enabled	1.4	0.039	0.053	13	120
V35	IL_Toulon	GCP35	RTK	Enabled	1.31	0.042	0.05	15	120
V36	IL_Toulon	VVA61	RTK	Enabled	1.88	0.095	0.094	14	97
V37	IL_Toulon	VVA61	RTK	Enabled	1.76	0.074	0.086	14	120
V38	IL_Toulon	VVA61	RTK	Enabled	1.57	0.057	0.066	14	120
V70	PRS555753813435	NVA119	RTK	Enabled	1.32	0.054	0.058	15	120
V71	PRS555753813435	NVA119	RTK	Enabled	1.37	0.063	0.067	15	120
V72	PRS555753813435	NVA119	RTK	Enabled	1.38	0.059	0.062	14	120
V39	IL_Toulon	NVA82	RTK	Enabled	1.43	0.04	0.041	16	120
V40	IL_Toulon	NVA82	RTK	Enabled	1.35	0.045	0.047	16	121
V73	PRS400074536884	VVA25	RTK	Enabled	2.64	0.085	0.099	10	39
V74	PRS400074536884	VVA25	RTK	Enabled	2.27	0.068	0.097	11	120
V75	PRS400074536884	VVA25	RTK	Enabled	2.3	0.059	0.086	11	120
V41	IL_Toulon	VVA57	RTK	Enabled	2.48	0.032	0.048	12	120
V42	IL_Toulon	VVA57	RTK	Enabled	3.06	0.033	0.065	13	104
V77	PRS400074536884	GCP16	RTK	Enabled	1.74	0.052	0.095	13	120
V78	PRS400074536884	GCP16	RTK	Enabled	1.88	0.049	0.094	13	120
V43	IL_Toulon	VVA57	RTK	Enabled	5.8	0.052	0.098	13	66
V79	PRS400074536884	NVA16	RTK	Enabled	2.07	0.047	0.11	13	120
V44	IL_Toulon	NVA132	RTK	Enabled	2.01	0.028	0.059	15	120
V81	PRS400074536884	NVA16	RTK	Enabled	1.7	0.064	0.134	14	120
V45	IL_Toulon	NVA132	RTK	Enabled	2.05	0.028	0.055	14	120
V82	PRS400074536884	NVA118	RTK	Enabled	1.54	0.045	0.068	15	120
V46	IL_Toulon	GCP34	RTK	Enabled	1.6	0.03	0.046	16	120
V83	PRS400074536884	NVA118	RTK	Enabled	1.54	0.042	0.061	15	120
V84	PRS400074536884	NVA118	RTK	Enabled	1.54	0.048	0.069	15	120
V85	PRS400074536884	NVA118	RTK	Enabled	1.54	0.064	0.091	16	120
V47	IL_Toulon	GCP34	RTK	Enabled	1.34	0.034	0.047	17	120
V86	PRS400074536884	NVA118	RTK	Enabled	1.37	0.06	0.082	17	120
V48	IL_Toulon	GCP34	RTK	Enabled	1.32	0.032	0.043	17	120
V87	PRS555753813435	GCP68	RTK	Enabled	1.53	0.07	0.092	17	120



V88	PRS555753813435	GCP68	RTK	Enabled	1.4	0.057	0.074	16	120
V49	IL_Toulon	NVA34	RTK	Enabled	1.47	0.035	0.046	17	120
V89	PRS555753813435	GCP68	RTK	Enabled	1.61	0.053	0.069	15	120
V50	IL_Toulon	NVA34	RTK	Enabled	1.45	0.041	0.052	15	120
V51	IL_Toulon	NVA34	RTK	Enabled	1.82	0.039	0.052	15	120
V52	IL_Toulon	VVA58	RTK	Enabled	1.77	0.054	0.07	14	120
V53	IL_Toulon	VVA58	RTK	Enabled	1.75	0.082	0.102	14	120
V54	IL_Toulon	VVA58	RTK	Enabled	1.55	0.063	0.087	16	120
V90	PRS555753813435	NVA70	RTK	Enabled	1.56	0.072	0.09	14	120
V55	IL_Toulon	VVA58	RTK	Enabled	1.39	0.039	0.049	17	120
V91	PRS555753813435	NVA70	RTK	Enabled	1.88	0.099	0.125	14	106
V92	PRS555753813435	GCP42	RTK	Enabled	1.22	0.082	0.095	17	120
V56	IL_Toulon	VVA62	RTK	Enabled	1.25	0.065	0.075	16	120
V93	PRS555753813435	GCP42	RTK	Enabled	1.22	0.095	0.111	17	120
V57	IL_Toulon	VVA62	RTK	Enabled	1.43	0.054	0.061	18	120
V94	PRS555753813435	GCP42	RTK	Enabled	1.21	0.085	0.099	18	120
V95	PRS555753813435	VVA26	RTK	Enabled	1.87	0.09	0.111	12	120
V58	IL_Toulon	GCP80	RTK	Enabled	1.7	0.047	0.064	14	120
V59	IL_Toulon	GCP80	RTK	Enabled	1.7	0.042	0.059	14	120
V60	IL_Toulon	GCP80	RTK	Enabled	1.7	0.062	0.087	14	35
V97	PRS555753813435	VVA26	RTK	Enabled	1.74	0.057	0.08	12	51
V98	PRS555753813435	NVA65	RTK	Enabled	1.61	0.039	0.062	14	120
V99	PRS555753813435	NVA65	RTK	Enabled	1.58	0.048	0.077	14	120
V100	PRS555753813435	NVA65	RTK	Enabled	2.38	0.056	0.091	14	120
V101	PRS555753813435	NVA65	RTK	Enabled	1.54	0.061	0.098	14	59
V102	PRS555753813435	NVA65	RTK	Enabled	1.53	0.04	0.066	14	120
V61	IL_Toulon	VVA60	RTK	Enabled	2.09	0.078	0.128	14	56
V62	IL_Toulon	VVA60	RTK	Enabled	3.11	0.068	0.109	13	120
V63	IL_Toulon	VVA60	RTK	Enabled	1.71	0.078	0.113	13	120
V103	PRS555753813435	NVA14	RTK	Enabled	1.57	0.047	0.06	14	120
V104	PRS555753813435	NVA14	RTK	Enabled	1.54	0.069	0.084	14	120
V64	IL_Toulon	NVA31	RTK	Enabled	1.79	0.047	0.053	13	120
V105	PRS555753813435	GCP14	RTK	Enabled	1.42	0.057	0.057	14	120
V106	PRS555753813435	GCP14	RTK	Enabled	1.72	0.06	0.058	14	120



V65	IL_Toulon	NVA31	RTK	Enabled	1.52	0.055	0.055	14	60
V66	IL_Toulon	NVA31	RTK	Enabled	1.59	0.051	0.055	14	120
V107	PRS555753813435	VVA09	RTK	Enabled	1.51	0.075	0.073	14	74
V67	IL_Toulon	GCP31	RTK	Enabled	2.06	0.061	0.069	13	120
V108	PRS555753813435	VVA09	RTK	Enabled	2.26	0.099	0.097	14	27
V109	PRS555753813435	VVA09	RTK	Enabled	1.51	0.065	0.065	14	120
V68	IL_Toulon	GCP31	RTK	Enabled	2.11	0.041	0.051	12	105
V110	PRS555753813435	NVA134	RTK	Enabled	1.53	0.034	0.036	13	120
V111	PRS555753813435	NVA134	RTK	Enabled	1.64	0.035	0.037	13	120
V69	IL_Toulon	GCP31	RTK	Enabled	2.31	0.055	0.075	11	25
V191	PRS555753813435	NVA108	RTK	Enabled	1.37	0.051	0.056	15	120
V192	PRS555753813435	NVA108	RTK	Enabled	1.36	0.075	0.08	15	73
V193	PRS555753813435	NVA108	RTK	Enabled	1.35	0.075	0.079	15	26
V194	PRS555753813435	NVA63	RTK	Enabled	1.56	0.077	0.082	15	120
V195	PRS555753813435	NVA63	RTK	Enabled	1.55	0.063	0.067	15	120
V196	PRS555753813435	NVA63	RTK	Enabled	1.54	0.077	0.086	14	120
V154	IA_Bettendorf	GCP28	RTK	Enabled	1.6	0.028	0.032	13	120
V155	IA_Bettendorf	GCP28	RTK	Enabled	1.76	0.053	0.061	12	120
V156	IA_Bettendorf	GCP28	RTK	Enabled	1.98	0.046	0.054	12	120
V197	PRS555753813435	GCP65	RTK	Enabled	1.76	0.112	0.137	12	67
V198	PRS555753813435	GCP65	RTK	Enabled	1.93	0.066	0.083	12	120
V199	PRS555753813435	GCP65	RTK	Enabled	1.9	0.108	0.137	11	79
V157	IA_Bettendorf	VVA70	RTK	Enabled	1.74	0.08	0.102	12	120
V158	IA_Bettendorf	VVA70	RTK	Enabled	1.91	0.069	0.092	14	120
V200	PRS555753813435	NVA133	RTK	Enabled	1.38	0.081	0.118	14	120
V201	PRS555753813435	NVA133	RTK	Enabled	1.39	0.057	0.084	15	120
V202	PRS555753813435	NVA133	RTK	Enabled	1.41	0.052	0.078	14	120
V203	PRS555753813435	VVA11	RTK	Enabled	1.8	0.07	0.117	12	73
V204	PRS555753813435	VVA11	RTK	Enabled	1.95	0.069	0.133	13	28
V159	IA_Bettendorf	VVA71	RTK	Enabled	1.83	0.057	0.093	13	120
V205	PRS555753813435	VVA11	RTK	Enabled	1.72	0.076	0.134	13	16
V160	IA_Bettendorf	VVA71	RTK	Enabled	1.93	0.067	0.104	12	120
V161	IA_Bettendorf	VVA71	RTK	Enabled	1.67	0.037	0.061	13	120
V162	IA_Bettendorf	VVA71	RTK	Enabled	1.79	0.049	0.08	13	120
V209	PRS555753813435	GCP91	RTK	Enabled	2.98	0.051	0.091	10	120



V210	PRS555753813435	GCP91	RTK	Enabled	2.9	0.05	0.086	10	120
V211	PRS555753813435	GCP91	RTK	Enabled	2.8	0.052	0.086	10	120
V212	PRS400074536884	NVA101	RTK	Enabled	1.64	0.064	0.073	12	120
V213	PRS400074536884	NVA101	RTK	Enabled	1.63	0.051	0.059	12	120
V214	PRS400074536884	NVA101	RTK	Enabled	1.89	0.051	0.058	12	120
V215	PRS400074536884	NVA101	RTK	Enabled	1.6	0.051	0.057	12	120
V216	PRS400074536884	NVA101	RTK	Enabled	1.69	0.106	0.116	12	120
V217	PRS400074536884	VVA110	RTK	Enabled	1.57	0.095	0.098	13	120
V218	PRS400074536884	VVA110	RTK	Enabled	1.58	0.106	0.11	13	120
V219	PRS400074536884	VVA110	RTK	Enabled	1.42	0.079	0.083	14	120
V220	PRS400074536884	GCP15	RTK	Enabled	1.49	0.05	0.059	13	120
V221	PRS400074536884	GCP15	RTK	Enabled	1.61	0.05	0.061	12	120
V222	PRS400074536884	GCP15	RTK	Enabled	1.63	0.049	0.061	12	120
V163	IA_Bettendorf	NVA37	RTK	Enabled	1.34	0.036	0.045	15	120
V164	IA_Bettendorf	NVA37	RTK	Enabled	1.32	0.03	0.04	15	120
V223	PRS400074536884	NVA15	RTK	Enabled	1.6	0.076	0.105	13	57
V224	PRS400074536884	NVA15	RTK	Enabled	1.77	0.048	0.069	14	120
V225	PRS400074536884	NVA15	RTK	Enabled	1.79	0.045	0.066	14	120
V226	PRS400074536884	GCP69	RTK	Enabled	1.84	0.052	0.095	14	120
V165	IA_Bettendorf	GCP37	RTK	Enabled	1.64	0.028	0.053	15	120
V227	PRS400074536884	GCP69	RTK	Enabled	1.88	0.056	0.12	14	120
V228	PRS400074536884	GCP69	RTK	Enabled	1.95	0.044	0.096	15	120
V166	IA_Bettendorf	GCP37	RTK	Enabled	1.63	0.028	0.055	16	120
V230	PRS400074536884	NVA100	RTK	Enabled	2.65	0.055	0.127	15	41
V231	PRS400074536884	NVA100	RTK	Enabled	2.62	0.042	0.098	13	120
V167	IA_Bettendorf	VVA73	RTK	Enabled	2.66	0.043	0.095	14	120
V168	IA_Bettendorf	VVA73	RTK	Enabled	2.08	0.04	0.076	16	120
V169	IA_Bettendorf	VVA73	RTK	Enabled	1.89	0.063	0.117	16	120
V170	IA_Bettendorf	VVA73	RTK	Enabled	1.66	0.031	0.053	16	120
V233	PRS400074536884	VVA27	RTK	Enabled	1.91	0.051	0.081	14	120
V234	PRS400074536884	VVA27	RTK	Enabled	1.69	0.034	0.052	15	120
V171	IA_Bettendorf	NVA97	RTK	Enabled	1.29	0.035	0.048	19	120
V172	IA_Bettendorf	NVA97	RTK	Enabled	1.22	0.037	0.05	18	120
V173	IA_Bettendorf	NVA91	RTK	Enabled	1.64	0.04	0.055	15	120
V174	IA_Bettendorf	NVA91	RTK	Enabled	1.57	0.039	0.051	15	120



V175	IA_Bettendorf	VVA76	RTK	Enabled	1.24	0.044	0.053	16	120
V176	IA_Bettendorf	VVA76	RTK	Enabled	1.44	0.071	0.087	17	120
V177	IA_Bettendorf	GCP86	RTK	Enabled	1.48	0.04	0.053	14	120
V178	IA_Bettendorf	GCP86	RTK	Enabled	1.79	0.04	0.058	14	120
V179	IA_Bettendorf	GCP86	RTK	Enabled	1.41	0.049	0.07	14	120
V180	IA_Bettendorf	GCP86	RTK	Enabled	1.73	0.044	0.063	14	120
V181	IA_Bettendorf	VVA80	RTK	Enabled	2.53	0.065	0.099	11	120
V182	IA_Bettendorf	VVA80	RTK	Enabled	1.83	0.08	0.126	12	76
V183	IA_Bettendorf	VVA80	RTK	Enabled	1.95	0.114	0.117	13	116
V184	IA_Bettendorf	NVA39	RTK	Enabled	1.41	0.043	0.052	16	120
V185	IA_Bettendorf	NVA39	RTK	Enabled	1.56	0.046	0.053	16	120
V186	IA_Bettendorf	VVA81	RTK	Enabled	2.46	0.097	0.106	12	120
V187	IA_Bettendorf	VVA81	RTK	Enabled	2.14	0.118	0.12	12	88
V188	IA_Bettendorf	VVA89	RTK	Enabled	4.98	0.105	0.214	10	120
V189	IA_Bettendorf	VVA89	RTK	Enabled	2.76	0.099	0.192	9	120
V235	IA_Bettendorf	VVA84	RTK	Enabled	1.59	0.066	0.11	13	120
V236	IA_Bettendorf	VVA84	RTK	Enabled	2.38	0.08	0.146	11	120
V238	IA_Bettendorf	VVA84	RTK	Enabled	2.55	0.097	0.142	11	61
V239	IA_Bettendorf	NVA94	RTK	Enabled	1.52	0.033	0.055	14	120
V240	IA_Bettendorf	NVA94	RTK	Enabled	1.54	0.046	0.069	14	43
V241	IA_Bettendorf	NVA94	RTK	Enabled	1.6	0.049	0.069	13	120
V242	IA_Bettendorf	VVA83	RTK	Enabled	1.7	0.061	0.073	12	120
V243	IA_Bettendorf	VVA83	RTK	Enabled	1.9	0.074	0.087	13	120
V244	IA_Bettendorf	VVA83	RTK	Enabled	1.92	0.072	0.08	14	120
V245	IA_Bettendorf	VVA87	RTK	Enabled	1.55	0.066	0.075	14	120
V246	IA_Bettendorf	VVA87	RTK	Enabled	2.08	0.096	0.111	12	112
V247	IA_Bettendorf	VVA87	RTK	Enabled	2.15	0.086	0.096	11	111
V248	IA_Bettendorf	NVA40	RTK	Enabled	1.63	0.04	0.054	14	120
V249	IA_Bettendorf	NVA40	RTK	Enabled	1.74	0.039	0.056	13	120
V250	IA_Bettendorf	NVA40	RTK	Enabled	1.74	0.043	0.065	14	120
V251	IA_Bettendorf	NVA40	RTK	Enabled	1.99	0.042	0.067	14	120
V252	IA_Bettendorf	GCP40	RTK	Enabled	1.92	0.029	0.058	14	120
V253	IA_Bettendorf	GCP40	RTK	Enabled	1.84	0.034	0.07	15	120
V254	IA_Bettendorf	GCP40	RTK	Enabled	1.43	0.033	0.07	15	120
V255	IA_Bettendorf	VVA88	RTK	Enabled	1.96	0.041	0.077	15	120



V256	IA_Bettendorf	VVA88	RTK	Enabled	1.59	0.04	0.066	16	120
V257	IA_Bettendorf	VVA88	RTK	Enabled	1.41	0.066	0.094	16	120
V258	IA_Bettendorf	NVA95	RTK	Enabled	1.49	0.044	0.057	15	120
V259	IA_Bettendorf	NVA95	RTK	Enabled	1.92	0.046	0.058	16	120
V260	IA_Bettendorf	NVA95	RTK	Enabled	1.39	0.054	0.066	15	120
V261	IA_Bettendorf	GCP85	RTK	Enabled	1.19	0.046	0.056	17	120
V262	IA_Bettendorf	GCP85	RTK	Enabled	1.39	0.047	0.059	16	120
V263	IA_Bettendorf	GCP85	RTK	Enabled	1.49	0.047	0.06	15	120
V264	IA_Bettendorf	GCP85	RTK	Enabled	1.56	0.057	0.076	15	120
V265	IA_Bettendorf	VVA78	RTK	Enabled	1.57	0.05	0.069	14	120
V266	IA_Bettendorf	VVA78	RTK	Enabled	1.56	0.056	0.078	14	120
V267	IA_Bettendorf	NVA93	RTK	Enabled	1.65	0.048	0.07	14	120
V268	IA_Bettendorf	NVA93	RTK	Enabled	1.41	0.047	0.073	14	120
V269	IA_Bettendorf	VVA82	RTK	Enabled	2.02	0.058	0.087	12	120
V270	IA_Bettendorf	VVA82	RTK	Enabled	1.76	0.041	0.059	14	120
V271	IA_Bettendorf	VVA82	RTK	Enabled	2.21	0.082	0.108	13	120
V272	IA_Bettendorf	GCP38	RTK	Enabled	1.48	0.049	0.05	15	120
V273	IA_Bettendorf	GCP38	RTK	Enabled	1.5	0.045	0.048	17	120
V274	IA_Bettendorf	GCP38	RTK	Enabled	1.61	0.038	0.041	16	120
V275	IA_Bettendorf	GCP38	RTK	Enabled	1.33	0.045	0.049	15	120
V276	IA_Bettendorf	VVA79	RTK	Enabled	1.95	0.083	0.088	15	120
V277	IA_Bettendorf	VVA79	RTK	Enabled	1.55	0.052	0.058	14	120
V278	IA_Bettendorf	NVA92	RTK	Enabled	1.26	0.045	0.056	14	120
V279	IA_Bettendorf	NVA92	RTK	Enabled	1.47	0.047	0.062	13	120
V280	IA_Bettendorf	NVA92	RTK	Enabled	1.48	0.045	0.059	14	120
V281	IA_Bettendorf	VVA72	RTK	Enabled	1.72	0.062	0.079	12	120
V282	IA_Bettendorf	VVA72	RTK	Enabled	1.66	0.04	0.049	12	120
V283	IA_Bettendorf	VVA69	RTK	Enabled	1.67	0.053	0.056	12	120
V284	IA_Bettendorf	VVA69	RTK	Enabled	1.89	0.058	0.061	10	95
V285	IA_Bettendorf	NVA28	RTK	Enabled	1.24	0.046	0.046	15	120
V286	IA_Bettendorf	NVA28	RTK	Enabled	1.22	0.031	0.031	16	120
V287	IA_Bettendorf	VVA68	RTK	Enabled	1.52	0.031	0.039	13	120
V288	IA_Bettendorf	VVA68	RTK	Enabled	1.71	0.042	0.054	13	120
V289	IA_Bettendorf	VVA68	RTK	Enabled	1.76	0.053	0.071	12	120
V290	IA_Bettendorf	VVA68	RTK	Enabled	1.76	0.042	0.058	13	120



V291	IA_Bettendorf	NVA90	RTK	Enabled	1.21	0.036	0.048	18	120
V292	IA_Bettendorf	NVA90	RTK	Enabled	1.24	0.035	0.047	17	120
V293	IA_Bettendorf	VVA74	RTK	Enabled	1.49	0.075	0.089	14	120
V294	IA_Bettendorf	VVA74	RTK	Enabled	1.62	0.067	0.081	14	75
V295	IA_Bettendorf	NVA96	RTK	Enabled	1.64	0.044	0.056	14	120
V296	IA_Bettendorf	NVA96	RTK	Enabled	1.66	0.039	0.05	14	120
V310	IA_Bettendorf	NVA38	RTK	Enabled	1.7	0.033	0.05	13	120
V311	IA_Bettendorf	NVA38	RTK	Enabled	1.76	0.03	0.045	12	120
V312	IA_Bettendorf	VVA75	RTK	Enabled	1.79	0.052	0.077	13	120
V313	IA_Bettendorf	VVA75	RTK	Enabled	1.62	0.074	0.112	13	120
V314	IA_Bettendorf	VVA75	RTK	Enabled	1.62	0.065	0.099	13	120
V315	IA_Bettendorf	GCP87	RTK	Enabled	2.24	0.029	0.05	11	120
V316	IA_Bettendorf	GCP87	RTK	Enabled	2.16	0.038	0.063	11	48
V317	IA_Bettendorf	GCP87	RTK	Enabled	2.63	0.034	0.054	13	120
V318	IA_Bettendorf	GCP84	RTK	Enabled	1.45	0.055	0.065	14	120
V319	IA_Bettendorf	GCP84	RTK	Enabled	1.47	0.051	0.059	14	120
V320	IA_Bettendorf	GCP84	RTK	Enabled	1.64	0.07	0.077	12	91
V321	IA_Bettendorf	GCP84	RTK	Enabled	1.48	0.052	0.055	13	120
V322	IA_Bettendorf	VVA77	RTK	Enabled	1.53	0.107	0.114	14	120
V323	IA_Bettendorf	VVA77	RTK	Enabled	2.18	0.096	0.105	10	120
V324	IA_Bettendorf	NVA32	RTK	Enabled	2.13	0.034	0.055	13	120
V325	IA_Bettendorf	NVA32	RTK	Enabled	1.88	0.032	0.055	15	120
V326	IA_Bettendorf	NVA32	RTK	Enabled	1.72	0.028	0.055	15	120
V327	IA_Bettendorf	GCP32	RTK	Enabled	2.32	0.031	0.062	11	63
V328	IA_Bettendorf	GCP32	RTK	Enabled	2.04	0.037	0.062	14	120
V329	IA_Bettendorf	GCP32	RTK	Enabled	1.62	0.038	0.061	15	120
V330	IA_Bettendorf	GCP32	RTK	Enabled	1.62	0.039	0.06	14	120
V331	IA_Bettendorf	VVA67	RTK	Enabled	1.5	0.071	0.096	15	120
V332	IA_Bettendorf	VVA67	RTK	Enabled	1.43	0.066	0.086	15	120
V333	IA_Bettendorf	VVA67	RTK	Enabled	1.45	0.074	0.099	13	120
V357	PRS555753813435	NVA05	RTK	Enabled	1.3	0.048	0.06	16	120
V358	PRS555753813435	NVA05	RTK	Enabled	1.39	0.055	0.07	15	120
V334	IA_Bettendorf	VVA66	RTK	Enabled	1.64	0.058	0.072	14	92
V336	IA_Bettendorf	VVA66	RTK	Enabled	1.54	0.078	0.101	17	120
V359	PRS555753813435	GCP05	RTK	Enabled	1.36	0.048	0.06	17	120



V337	IA_Bettendorf	VVA66	RTK	Enabled	1.63	0.064	0.085	16	51
V360	PRS555753813435	GCP05	RTK	Enabled	1.31	0.046	0.057	17	120
V338	IA_Bettendorf	NVA86	RTK	Enabled	1.23	0.041	0.05	18	120
V339	IA_Bettendorf	NVA86	RTK	Enabled	1.36	0.029	0.037	17	120
V361	PRS555753813435	NVA106	RTK	Enabled	1.43	0.049	0.062	16	120
V362	PRS555753813435	NVA106	RTK	Enabled	1.43	0.052	0.066	16	120
V363	PRS555753813435	NVA106	RTK	Enabled	1.55	0.049	0.064	15	120
V364	PRS555753813435	NVA106	RTK	Enabled	10.82	0.075	0.099	15	61
V340	IA_Bettendorf	NVA33	RTK	Enabled	1.68	0.037	0.052	15	120
V341	IA_Bettendorf	NVA33	RTK	Enabled	1.88	0.039	0.057	14	120
V365	PRS555753813435	VVA06	RTK	Enabled	1.93	0.075	0.114	13	47
V366	PRS555753813435	VVA06	RTK	Enabled	1.93	0.07	0.116	14	21
V367	PRS555753813435	VVA06	RTK	Enabled	2.01	0.063	0.102	13	120
V297	PRS831957994173	NVA01	RTK	Enabled	1.78	0.027	0.043	14	120
V368	PRS555753813435	VVA06	RTK	Enabled	1.88	0.069	0.11	13	39
V298	PRS831957994173	NVA01	RTK	Enabled	1.73	0.04	0.064	14	43
V342	IA_Bettendorf	GCP33	RTK	Enabled	1.46	0.056	0.093	15	120
V299	PRS831957994173	NVA01	RTK	Enabled	1.42	0.026	0.039	16	120
V300	PRS831957994173	NVA01	RTK	Enabled	1.46	0.026	0.039	15	120
V343	IA_Bettendorf	GCP33	RTK	Enabled	1.52	0.045	0.069	16	120
V344	IA_Bettendorf	GCP33	RTK	Enabled	1.76	0.048	0.072	16	120
V369	PRS555753813435	NVA60	RTK	Enabled	1.5	0.052	0.074	15	120
V345	IA_Bettendorf	VVA59	RTK	Enabled	1.63	0.056	0.082	14	120
V370	PRS555753813435	NVA60	RTK	Enabled	1.49	0.049	0.067	15	120
V346	IA_Bettendorf	VVA59	RTK	Enabled	2.15	0.051	0.075	14	120
V371	PRS555753813435	GCP60	RTK	Enabled	1.41	0.062	0.076	15	120
V301	PRS831957994173	VVA01	RTK	Enabled	1.78	0.102	0.103	12	39
V302	PRS831957994173	VVA01	RTK	Enabled	1.9	0.109	0.123	11	18
V303	PRS831957994173	VVA01	RTK	Enabled	1.66	0.105	0.116	13	17
V372	PRS555753813435	GCP60	RTK	Enabled	1.38	0.062	0.068	15	120
V304	PRS831957994173	VVA01	RTK	Enabled	2.06	0.142	0.108	14	19
V373	PRS555753813435	GCP60	RTK	Enabled	1.62	0.057	0.062	15	120
V305	PRS831957994173	VVA01	RTK	Enabled	1.68	0.116	0.111	14	47
V374	PRS555753813435	GCP60	RTK	Enabled	1.35	0.055	0.06	16	120
V375	PRS555753813435	GCP60	RTK	Enabled	1.29	0.056	0.06	17	120



V347	IA_Bettendorf	NVA85	RTK	Enabled	1.45	0.049	0.052	16	120
V376	PRS555753813435	GCP60	RTK	Enabled	1.44	0.07	0.075	17	120
V348	IA_Bettendorf	NVA85	RTK	Enabled	1.76	0.048	0.052	15	120
V349	IA_Bettendorf	NVA85	RTK	Enabled	2.46	0.051	0.057	15	120
V306	PRS831957994173	GCP01	RTK	Enabled	2.12	0.049	0.057	12	120
V307	PRS831957994173	GCP01	RTK	Enabled	1.54	0.031	0.036	13	120
V308	PRS831957994173	NVA53	RTK	Enabled	2.56	0.061	0.077	11	17
V309	PRS831957994173	NVA53	RTK	Enabled	2.08	0.049	0.058	13	120
V350	IA_Bettendorf	GCP83	RTK	Enabled	1.57	0.046	0.054	13	120
V377	PRS555753813435	NVA105	RTK	Enabled	2.37	0.061	0.08	11	93
V351	IA_Bettendorf	GCP83	RTK	Enabled	1.56	0.039	0.048	13	120
V352	IA_Bettendorf	GCP83	RTK	Enabled	2.08	0.042	0.053	13	120
V378	PRS555753813435	VVA36	RTK	Enabled	1.55	0.079	0.102	15	120
V353	IA_Bettendorf	NVA114	RTK	Enabled	1.48	0.04	0.051	13	120
V379	PRS555753813435	VVA36	RTK	Enabled	1.5	0.095	0.119	16	120
V354	IA_Bettendorf	NVA114	RTK	Enabled	1.38	0.036	0.047	15	120
V380	PRS555753813435	VVA36	RTK	Enabled	1.33	0.08	0.107	15	120
V355	IA_Bettendorf	GCP77	RTK	Enabled	1.3	0.048	0.057	16	120
V356	IA_Bettendorf	GCP77	RTK	Enabled	1.27	0.035	0.041	16	120
V454	PRS555753813435	NVA06	RTK	Enabled	3.03	0.084	0.094	10	47
V455	PRS555753813435	NVA06	RTK	Enabled	1.8	0.085	0.088	10	25
V456	PRS555753813435	NVA06	RTK	Enabled	1.73	0.083	0.082	10	26
V457	PRS555753813435	NVA06	RTK	Enabled	1.65	0.088	0.086	11	24
V381	PRS831957994173	NVA54	RTK	Enabled	1.72	0.049	0.046	14	120
V382	PRS831957994173	NVA54	RTK	Enabled	1.47	0.047	0.044	15	120
V458	PRS555753813435	NVA105	RTK	Enabled	2.09	0.099	0.1	12	21
V413	IA_Bettendorf	NVA89	RTK	Enabled	1.99	0.053	0.055	12	120
V414	IA_Bettendorf	NVA89	RTK	Enabled	1.85	0.046	0.05	12	120
V383	PRS831957994173	NVA56	RTK	Enabled	1.83	0.06	0.064	12	25
V384	PRS831957994173	NVA56	RTK	Enabled	1.58	0.05	0.071	12	120
V385	PRS831957994173	NVA56	RTK	Enabled	1.57	0.052	0.078	12	120
V462	PRS555753813435	VVA37	RTK	Enabled	1.6	0.041	0.077	12	120
V463	PRS555753813435	VVA37	RTK	Enabled	1.61	0.046	0.084	12	120
V415	IA_Bettendorf	NVA29	RTK	Enabled	1.72	0.029	0.054	12	120
V466	PRS555753813435	VVA37	RTK	Enabled	9.09	0.058	0.119	11	31



V416	IA_Bettendorf	NVA29	RTK	Enabled	1.72	0.037	0.068	13	120
V417	IA_Bettendorf	NVA29	RTK	Enabled	1.57	0.039	0.068	13	120
V467	PRS555753813435	GCP61	RTK	Enabled	2.33	0.067	0.119	11	83
V468	PRS555753813435	GCP61	RTK	Enabled	2.37	0.049	0.088	12	120
V469	PRS555753813435	NVA107	RTK	Enabled	2.31	0.05	0.086	11	120
V470	PRS555753813435	NVA107	RTK	Enabled	2.26	0.058	0.095	11	120
V418	IA_Bettendorf	GCP29	RTK	Enabled	1.85	0.046	0.072	11	120
V471	PRS555753813435	NVA107	RTK	Enabled	3.74	0.042	0.068	11	120
V419	IA_Bettendorf	GCP29	RTK	Enabled	1.86	0.053	0.077	13	120
V472	PRS555753813435	NVA107	RTK	Enabled	2.19	0.062	0.094	11	120
V420	IA_Bettendorf	GCP29	RTK	Enabled	1.66	0.058	0.077	13	120
V421	IA_Bettendorf	VVA56	RTK	Enabled	2.03	0.088	0.108	12	120
V422	IA_Bettendorf	VVA56	RTK	Enabled	2.06	0.081	0.103	11	120
V473	PRS555753813435	VVA38	RTK	Enabled	1.96	0.085	0.101	14	120
V386	PRS831957994173	NVA02	RTK	Enabled	1.57	0.046	0.05	12	27
V387	PRS831957994173	NVA02	RTK	Enabled	1.62	0.06	0.064	14	68
V474	PRS555753813435	VVA38	RTK	Enabled	1.83	0.069	0.075	15	120
V388	PRS831957994173	NVA02	RTK	Enabled	1.44	0.057	0.06	14	22
V475	PRS555753813435	VVA38	RTK	Enabled	1.34	0.1	0.114	14	23
V423	IA_Bettendorf	GCP81	RTK	Enabled	1.77	0.03	0.039	14	120
V476	PRS555753813435	VVA39	RTK	Enabled	1.54	0.053	0.073	13	120
V389	PRS831957994173	GCP02	RTK	Enabled	1.67	0.04	0.05	14	120
V390	PRS831957994173	GCP02	RTK	Enabled	1.51	0.034	0.045	14	120
V424	IA_Bettendorf	GCP81	RTK	Enabled	1.75	0.041	0.058	13	120
V391	PRS831957994173	GCP02	RTK	Enabled	2.07	0.039	0.053	13	120
V477	PRS555753813435	VVA39	RTK	Enabled	4.88	0.074	0.113	14	93
V478	PRS555753813435	VVA39	RTK	Enabled	2.07	0.074	0.12	14	62
V425	IA_Bettendorf	NVA78	RTK	Enabled	1.5	0.034	0.056	16	120
V426	IA_Bettendorf	NVA78	RTK	Enabled	1.58	0.045	0.084	15	120
V392	PRS831957994173	VVA02	RTK	Disabled	1.74	0.06	0.113	14	21
V393	PRS831957994173	VVA02	RTK	Disabled	2.05	0.051	0.107	14	18
V427	IA_Bettendorf	VVA55	RTK	Enabled	1.42	0.045	0.092	17	120
V428	IA_Bettendorf	VVA55	RTK	Enabled	2.05	0.053	0.111	16	120
V480	PRS555753813435	NVA102	RTK	Enabled	2.09	0.05	0.11	14	120
V481	PRS555753813435	NVA102	RTK	Enabled	2.02	0.061	0.126	14	46



V394	PRS831957994173	VVA02	RTK	Enabled	2.41	0.04	0.092	12	68
V429	IL_Toulon	NVA88	RTK	Enabled	1.98	0.031	0.061	15	120
V395	PRS831957994173	VVA02	RTK	Enabled	2.84	0.041	0.09	13	32
V396	PRS831957994173	VVA02	RTK	Enabled	2.49	0.039	0.072	14	120
V430	IL_Toulon	NVA88	RTK	Enabled	1.93	0.036	0.064	16	120
V431	IL_Toulon	NVA88	RTK	Enabled	2.18	0.047	0.079	15	120
V397	PRS831957994173	VVA02	RTK	Enabled	1.95	0.04	0.072	14	120
V432	IL_Toulon	NVA88	RTK	Enabled	1.65	0.038	0.059	15	120
V398	PRS831957994173	NVA55	RTK	Enabled	1.37	0.039	0.052	16	120
V482	PRS831957994173	GCP59	RTK	Enabled	1.37	0.052	0.071	16	120
V483	PRS831957994173	GCP59	RTK	Enabled	1.39	0.06	0.082	16	120
V399	PRS831957994173	NVA55	RTK	Enabled	1.35	0.047	0.062	16	36
V484	PRS831957994173	GCP59	RTK	Enabled	1.34	0.054	0.073	16	120
V485	PRS831957994173	GCP59	RTK	Enabled	1.31	0.096	0.125	17	60
V433	IL_Toulon	NVA81	RTK	Enabled	1.53	0.047	0.062	15	120
V434	IL_Toulon	NVA81	RTK	Enabled	1.44	0.061	0.079	15	120
V486	PRS831957994173	VVA03	RTK	Enabled	3.72	0.088	0.118	14	42
V487	PRS831957994173	VVA03	RTK	Enabled	1.46	0.055	0.073	14	120
V488	PRS831957994173	VVA03	RTK	Enabled	1.48	0.068	0.092	14	61
V489	PRS831957994173	VVA03	RTK	Enabled	1.52	0.063	0.083	14	120
V400	PRS831957994173	GCP63	RTK	Enabled	1.59	0.041	0.053	14	107
V401	PRS831957994173	GCP63	RTK	Enabled	1.45	0.042	0.053	16	120
V435	IL_Toulon	GCP78	RTK	Enabled	1.28	0.042	0.051	17	120
V402	PRS831957994173	GCP63	RTK	Enabled	1.33	0.048	0.059	16	32
V436	IL_Toulon	GCP78	RTK	Enabled	1.28	0.042	0.052	17	120
V490	PRS831957994173	NVA58	RTK	Enabled	1.28	0.057	0.074	16	98
V403	PRS831957994173	GCP63	RTK	Enabled	1.31	0.051	0.063	16	86
V491	PRS831957994173	NVA58	RTK	Enabled	1.54	0.053	0.068	16	120
V437	IL_Toulon	GCP78	RTK	Enabled	1.53	0.041	0.052	17	120
V492	PRS831957994173	NVA58	RTK	Enabled	1.45	0.056	0.072	15	115
V438	IL_Toulon	GCP78	RTK	Enabled	1.57	0.038	0.049	15	120
V404	PRS831957994173	GCP63	RTK	Enabled	1.2	0.036	0.045	17	120
V439	IL_Toulon	NVA79	RTK	Enabled	1.63	0.038	0.052	14	120
V493	PRS831957994173	NVA104	RTK	Enabled	1.63	0.073	0.107	14	120
V405	PRS831957994173	NVA111	RTK	Enabled	1.52	0.036	0.049	15	120



V440	IL_Toulon	NVA79	RTK	Enabled	1.63	0.033	0.047	14	120
V494	PRS831957994173	NVA104	RTK	Enabled	1.8	0.049	0.072	14	120
V495	PRS831957994173	NVA104	RTK	Enabled	1.99	0.064	0.097	14	120
V406	PRS831957994173	NVA111	RTK	Enabled	1.67	0.036	0.051	15	120
V496	PRS831957994173	NVA104	RTK	Enabled	1.82	0.047	0.07	15	120
V441	IL_Toulon	VVA54	RTK	Enabled	1.61	0.079	0.116	14	120
V497	PRS831957994173	NVA104	RTK	Enabled	1.61	0.06	0.09	14	120
V442	IL_Toulon	VVA54	RTK	Enabled	1.63	0.058	0.086	14	120
V443	IL_Toulon	VVA54	RTK	Enabled	2.18	0.048	0.073	15	120
V498	PRS555753813435	GCP04	RTK	Enabled	2.06	0.054	0.089	14	120
V499	PRS555753813435	GCP04	RTK	Enabled	1.56	0.049	0.081	14	120
V444	IL_Toulon	GCP30	RTK	Enabled	1.76	0.042	0.068	14	120
V445	IL_Toulon	GCP30	RTK	Enabled	1.73	0.038	0.062	15	120
V407	PRS831957994173	NVA07	RTK	Enabled	1.93	0.04	0.063	13	64
V500	PRS555753813435	VVA07	RTK	Enabled	1.79	0.073	0.08	14	95
V501	PRS555753813435	VVA07	RTK	Enabled	2.02	0.083	0.112	15	99
V502	PRS555753813435	VVA07	RTK	Enabled	1.58	0.059	0.077	15	120
V408	PRS831957994173	NVA07	RTK	Enabled	1.83	0.041	0.058	13	120
V446	IL_Toulon	NVA30	RTK	Enabled	1.53	0.048	0.063	15	120
V503	PRS555753813435	VVA07	RTK	Enabled	10.13	0.094	0.118	16	44
V447	IL_Toulon	NVA30	RTK	Enabled	1.33	0.051	0.065	15	96
V409	PRS831957994173	GCP07	RTK	Enabled	1.46	0.051	0.059	14	75
V504	PRS555753813435	VVA07	RTK	Enabled	1.72	0.063	0.071	15	120
V410	PRS831957994173	GCP07	RTK	Enabled	1.33	0.041	0.046	15	120
V505	PRS555753813435	VVA07	RTK	Enabled	1.33	0.075	0.083	15	120
V411	PRS831957994173	GCP07	RTK	Enabled	1.29	0.05	0.053	15	120
V506	PRS555753813435	NVA04	RTK	Enabled	1.24	0.062	0.067	16	120
V507	PRS555753813435	NVA04	RTK	Enabled	1.24	0.063	0.068	16	120
V448	IL_Toulon	VVA53	RTK	Enabled	1.44	0.058	0.065	15	120
V412	PRS831957994173	GCP07	RTK	Enabled	1.26	0.058	0.062	17	31
V508	PRS555753813435	NVA04	RTK	Enabled	1.56	0.058	0.064	16	120
V449	IL_Toulon	VVA53	RTK	Enabled	1.45	0.084	0.092	16	120
V450	IL_Toulon	VVA53	RTK	Enabled	2.01	0.082	0.094	17	120
V509	PRS555753813435	NVA109	RTK	Enabled	1.36	0.064	0.073	14	120
V510	PRS555753813435	NVA109	RTK	Enabled	1.53	0.093	0.109	14	42



V511	PRS555753813435	NVA109	RTK	Enabled	1.36	0.059	0.069	14	120
V451	IL_Toulon	NVA80	RTK	Enabled	1.34	0.044	0.056	15	120
V452	IL_Toulon	NVA80	RTK	Enabled	1.21	0.043	0.055	15	120
V453	IL_Toulon	NVA80	RTK	Enabled	1.56	0.034	0.047	14	120
V572	PRS555753813435	GCP06	RTK	Disabled	1.46	0.053	0.066	15	120
V573	PRS555753813435	GCP06	RTK	Enabled	1.45	0.064	0.074	14	120
V574	PRS555753813435	GCP06	RTK	Enabled	1.43	0.044	0.051	14	120
V537	PRS831957994173	NVA57	RTK	Enabled	1.35	0.047	0.05	15	120
V538	PRS831957994173	NVA57	RTK	Enabled	1.29	0.052	0.057	14	120
V575	PRS555753813435	NVA130	RTK	Enabled	1.21	0.097	0.101	15	55
V576	PRS555753813435	NVA130	RTK	Enabled	1.28	0.073	0.076	14	120
V577	PRS555753813435	VVA04	RTK	Enabled	3.01	0.046	0.062	12	120
V539	PRS831957994173	VVA17	RTK	Enabled	1.65	0.045	0.055	11	120
V540	PRS831957994173	VVA17	RTK	Enabled	1.55	0.07	0.083	12	120
V578	PRS555753813435	VVA04	RTK	Enabled	1.63	0.109	0.119	12	28
V541	PRS831957994173	VVA17	RTK	Enabled	1.55	0.074	0.087	12	85
V542	PRS831957994173	VVA17	RTK	Enabled	1.43	0.081	0.106	13	99
V543	PRS831957994173	NVA59	RTK	Enabled	1.5	0.034	0.058	13	120
V512	IA_Bettendorf	VVA86	RTK	Enabled	1.94	0.054	0.097	13	120
V581	PRS400074536884	VVA14	RTK	Enabled	2.66	0.046	0.087	13	120
V513	IA_Bettendorf	VVA86	RTK	Enabled	1.81	0.05	0.088	13	120
V514	IA_Bettendorf	VVA86	RTK	Enabled	1.84	0.062	0.122	14	31
V515	IA_Bettendorf	VVA86	RTK	Enabled	2.03	0.053	0.104	12	52
V583	PRS400074536884	VVA14	RTK	Enabled	2.25	0.066	0.124	12	16
V544	PRS831957994173	NVA59	RTK	Enabled	1.64	0.033	0.064	13	57
V584	PRS400074536884	VVA14	RTK	Enabled	2.29	0.045	0.088	13	120
V545	PRS831957994173	NVA59	RTK	Enabled	2.98	0.03	0.057	13	120
V516	IA_Bettendorf	GCP39	RTK	Enabled	1.72	0.038	0.056	13	120
V517	IA_Bettendorf	GCP39	RTK	Enabled	1.58	0.041	0.054	14	120
V518	IA_Bettendorf	GCP39	RTK	Enabled	1.51	0.034	0.045	13	120
V546	PRS831957994173	GCP58	RTK	Enabled	1.52	0.044	0.053	14	120
V547	PRS831957994173	GCP58	RTK	Enabled	1.58	0.046	0.053	15	120
V548	PRS831957994173	GCP62	RTK	Enabled	1.54	0.048	0.054	15	120
V549	PRS831957994173	GCP62	RTK	Enabled	1.83	0.032	0.045	12	120
V550	PRS831957994173	VVA08	RTK	Enabled	2.01	0.033	0.059	14	120



V551	PRS831957994173	VVA08	RTK	Enabled	1.9	0.029	0.06	15	120
V585	PRS400074536884	NVA61	RTK	Enabled	1.94	0.05	0.102	15	63
V519	IA_Bettendorf	VVA52	RTK	Enabled	2.14	0.047	0.092	14	105
V586	PRS400074536884	NVA61	RTK	Enabled	1.65	0.048	0.096	14	120
V552	PRS831957994173	NVA103	RTK	Enabled	2.06	0.022	0.054	13	120
V520	IA_Bettendorf	VVA52	RTK	Enabled	2.88	0.046	0.098	14	120
V587	PRS400074536884	NVA61	RTK	Enabled	1.69	0.063	0.117	13	36
V553	PRS831957994173	NVA103	RTK	Enabled	2.05	0.029	0.059	13	120
V521	IA_Bettendorf	NVA27	RTK	Enabled	1.69	0.045	0.073	15	142
V554	PRS831957994173	NVA103	RTK	Enabled	1.92	0.032	0.059	14	120
V588	PRS400074536884	GCP88	RTK	Enabled	1.79	0.051	0.086	14	120
V522	IA_Bettendorf	NVA27	RTK	Enabled	1.53	0.047	0.072	16	120
V589	PRS400074536884	GCP88	RTK	Enabled	1.68	0.047	0.076	15	120
V555	PRS831957994173	NVA103	RTK	Enabled	1.67	0.039	0.064	15	109
V523	IA_Bettendorf	NVA27	RTK	Enabled	1.37	0.049	0.068	16	120
V524	IA_Bettendorf	GCP27	RTK	Enabled	1.32	0.05	0.064	15	120
V590	PRS631276951768	NVA110	RTK	Enabled	1.21	0.044	0.058	18	120
V591	PRS631276951768	NVA110	RTK	Enabled	1.24	0.062	0.079	16	75
V592	PRS631276951768	NVA110	RTK	Enabled	1.25	0.061	0.08	16	120
V556	PRS631276951768	NVA10	RTK	Enabled	1.25	0.042	0.059	16	120
V525	IA_Bettendorf	GCP27	RTK	Enabled	1.37	0.048	0.06	15	120
V593	PRS631276951768	NVA110	RTK	Enabled	1.24	0.062	0.079	16	106
V557	PRS631276951768	NVA10	RTK	Enabled	1.55	0.042	0.056	14	120
V594	PRS631276951768	NVA110	RTK	Enabled	1.31	0.056	0.073	15	120
V526	IA_Bettendorf	GCP27	RTK	Enabled	2.07	0.056	0.073	14	120
V558	PRS631276951768	NVA10	RTK	Enabled	1.67	0.041	0.055	13	120
V559	PRS631276951768	NVA10	RTK	Enabled	1.67	0.042	0.059	14	120
V527	IA_Bettendorf	VVA46	RTK	Enabled	2.12	0.061	0.079	14	120
V560	PRS631276951768	GCP10	RTK	Disabled	1.38	0.035	0.05	17	120
V528	IA_Bettendorf	VVA46	RTK	Enabled	2.12	0.07	0.08	15	120
V595	PRS631276951768	NVA124	RTK	Enabled	1.29	0.071	0.09	17	120
V596	PRS631276951768	NVA124	RTK	Enabled	1.23	0.084	0.103	17	48
V597	PRS631276951768	NVA124	RTK	Enabled	1.22	0.085	0.104	17	28
V561	PRS631276951768	GCP10	RTK	Enabled	1.33	0.039	0.055	16	120
V598	PRS631276951768	NVA124	RTK	Enabled	1.27	0.051	0.064	17	120



V599	PRS631276951768	NVA124	RTK	Enabled	1.21	0.067	0.084	17	120
V562	PRS631276951768	GCP10	RTK	Enabled	1.34	0.041	0.055	17	120
V563	PRS631276951768	GCP10	RTK	Enabled	1.39	0.049	0.064	16	46
V600	PRS631276951768	VVA19	RTK	Enabled	1.59	0.084	0.104	15	49
V601	PRS631276951768	VVA19	RTK	Enabled	1.47	0.067	0.086	16	120
V564	PRS631276951768	GCP10	RTK	Enabled	1.39	0.036	0.05	16	120
V602	PRS631276951768	VVA19	RTK	Enabled	1.47	0.092	0.116	16	73
V565	PRS631276951768	GCP10	RTK	Enabled	1.48	0.04	0.055	15	120
V603	PRS631276951768	VVA19	RTK	Enabled	1.7	0.076	0.101	14	25
V529	IL_Morrison	NVA128	RTK	Enabled	1.48	0.036	0.047	15	120
V604	PRS631276951768	VVA19	RTK	Enabled	1.51	0.085	0.111	14	43
V605	PRS631276951768	VVA19	RTK	Enabled	1.5	0.054	0.071	15	120
V530	IL_Morrison	NVA128	RTK	Enabled	1.48	0.039	0.051	15	120
V606	PRS631276951768	VVA19	RTK	Enabled	1.83	0.08	0.107	13	38
V531	IL_Morrison	VVA47	RTK	Enabled	2.18	0.052	0.077	14	120
V532	IL_Morrison	VVA47	RTK	Enabled	1.99	0.054	0.08	15	120
V566	PRS831957994173	NVA122	RTK	Enabled	1.72	0.029	0.049	15	120
V567	PRS831957994173	NVA122	RTK	Enabled	1.48	0.034	0.055	15	120
V607	PRS400074536884	GCP89	RTK	Enabled	1.43	0.047	0.068	15	120
V533	IL_Morrison	VVA51	RTK	Enabled	1.29	0.045	0.065	16	120
V608	PRS400074536884	GCP89	RTK	Enabled	1.29	0.056	0.081	16	120
V534	IL_Morrison	VVA51	RTK	Enabled	1.49	0.053	0.077	15	120
V568	PRS831957994173	VVA16	RTK	Enabled	1.54	0.049	0.077	14	120
V569	PRS831957994173	VVA16	RTK	Enabled	1.53	0.05	0.075	14	93
V535	IL_Morrison	NVA115	RTK	Enabled	1.52	0.046	0.063	14	120
V536	IL_Morrison	NVA115	RTK	Enabled	1.59	0.045	0.059	16	120
V609	PRS400074536884	NVA12	RTK	Enabled	1.68	0.076	0.103	12	40
V610	PRS400074536884	NVA12	RTK	Enabled	1.6	0.062	0.084	13	120
V611	PRS400074536884	NVA12	RTK	Enabled	1.71	0.082	0.112	14	92
V612	PRS400074536884	NVA12	RTK	Enabled	1.8	0.062	0.084	12	120
V613	PRS400074536884	VVA13	RTK	Enabled	1.78	0.076	0.085	14	120
V614	PRS400074536884	VVA13	RTK	Enabled	1.64	0.104	0.104	14	23
V615	PRS400074536884	VVA13	RTK	Enabled	1.72	0.071	0.074	14	120
V616	PRS400074536884	VVA13	RTK	Enabled	1.69	0.088	0.091	14	120
V570	PRS831957994173	GCP08	RTK	Enabled	1.51	0.054	0.059	14	120



V571	PRS831957994173	GCP08	RTK	Enabled	1.53	0.045	0.051	14	120
V677	PRS400074536884	NVA139	RTK	Enabled	1.23	0.054	0.058	16	120
V617	PRS631276951768	VVA34	RTK	Enabled	1.29	0.047	0.049	16	120
V678	PRS400074536884	NVA139	RTK	Enabled	1.25	0.071	0.075	16	120
V618	PRS631276951768	VVA34	RTK	Enabled	1.25	0.048	0.05	16	120
V679	PRS400074536884	NVA139	RTK	Enabled	1.51	0.085	0.092	16	120
V619	PRS631276951768	GCP24	RTK	Enabled	1.53	0.049	0.055	15	120
V620	PRS631276951768	GCP24	RTK	Enabled	1.7	0.04	0.048	14	120
V680	PRS400074536884	GCP12	RTK	Enabled	2.29	0.074	0.097	12	120
V621	PRS631276951768	NVA24	RTK	Enabled	1.67	0.032	0.043	14	120
V681	PRS400074536884	GCP12	RTK	Enabled	1.71	0.074	0.108	14	33
V622	PRS631276951768	NVA24	RTK	Enabled	1.54	0.037	0.052	13	120
V682	PRS400074536884	GCP12	RTK	Enabled	1.68	0.057	0.088	13	35
V623	PRS631276951768	NVA24	RTK	Enabled	1.54	0.032	0.045	13	120
V683	PRS400074536884	GCP12	RTK	Enabled	1.78	0.078	0.119	13	30
V624	PRS631276951768	NVA24	RTK	Enabled	1.53	0.043	0.061	13	67
V640	IA_Bettendorf	VVA85	RTK	Enabled	1.28	0.059	0.092	16	120
V684	PRS400074536884	GCP12	RTK	Enabled	1.7	0.068	0.108	13	60
V641	IA_Bettendorf	VVA85	RTK	Enabled	1.33	0.056	0.083	16	120
V642	IA_Bettendorf	VVA85	RTK	Enabled	1.29	0.051	0.075	15	120
V643	IA_Bettendorf	VVA85	RTK	Enabled	1.41	0.063	0.093	16	120
V685	PRS400074536884	GCP12	RTK	Enabled	2	0.068	0.118	13	106
V625	PRS631276951768	NVA24	RTK	Enabled	1.62	0.042	0.062	13	43
V686	PRS400074536884	GCP12	RTK	Enabled	2.09	0.067	0.118	14	50
V626	PRS631276951768	NVA11	RTK	Enabled	1.67	0.032	0.053	13	66
V627	PRS631276951768	NVA11	RTK	Enabled	1.8	0.04	0.064	15	15
V628	PRS631276951768	NVA11	RTK	Enabled	3.03	0.034	0.059	12	120
V687	PRS400074536884	NVA64	RTK	Enabled	2.12	0.045	0.073	12	120
V688	PRS400074536884	NVA64	RTK	Enabled	1.48	0.041	0.061	13	120
V629	PRS631276951768	NVA11	RTK	Enabled	2.84	0.037	0.058	11	19
V630	PRS631276951768	NVA11	RTK	Enabled	2.76	0.039	0.054	12	90
V631	PRS631276951768	VVA22	RTK	Enabled	1.65	0.044	0.051	14	120
V689	PRS400074536884	GCP67	RTK	Enabled	1.34	0.049	0.056	13	120
V644	IA_Bettendorf	GCP82	RTK	Enabled	1.48	0.055	0.064	13	120
V632	PRS631276951768	VVA22	RTK	Enabled	1.45	0.049	0.056	15	120



V690	PRS400074536884	GCP67	RTK	Enabled	1.34	0.052	0.057	15	120
V691	PRS400074536884	GCP67	RTK	Enabled	1.36	0.053	0.058	15	120
V692	PRS400074536884	GCP67	RTK	Enabled	1.25	0.055	0.059	15	120
V633	PRS631276951768	GCP11	RTK	Enabled	1.48	0.06	0.063	14	43
V645	IA_Bettendorf	GCP82	RTK	Enabled	1.49	0.067	0.073	13	120
V693	PRS400074536884	GCP67	RTK	Enabled	1.3	0.058	0.062	14	120
V634	PRS631276951768	GCP11	RTK	Enabled	1.3	0.048	0.05	14	120
V646	IA_Bettendorf	GCP82	RTK	Enabled	1.54	0.072	0.076	14	120
V635	PRS631276951768	GCP11	RTK	Enabled	1.5	0.049	0.051	13	120
V636	PRS631276951768	GCP11	RTK	Enabled	1.58	0.04	0.041	13	120
V637	PRS631276951768	GCP11	RTK	Enabled	1.42	0.041	0.042	13	120
V638	PRS631276951768	GCP11	RTK	Enabled	1.33	0.061	0.063	14	15
V647	IA_Bettendorf	NVA127	RTK	Enabled	1.33	0.069	0.073	16	120
V639	PRS631276951768	GCP11	RTK	Enabled	1.34	0.046	0.048	14	120
V648	IA_Bettendorf	NVA127	RTK	Enabled	1.31	0.074	0.078	15	120
V649	IA_Bettendorf	NVA127	RTK	Enabled	1.64	0.061	0.07	14	120
V694	PRS400074536884	NVA125	RTK	Enabled	1.51	0.043	0.051	14	120
V695	PRS400074536884	NVA125	RTK	Enabled	1.95	0.051	0.065	14	120
V650	IA_Bettendorf	GCP76	RTK	Enabled	5.04	0.05	0.081	14	120
V696	PRS400074536884	VVA12	RTK	Enabled	2.17	0.051	0.106	13	122
V698	PRS400074536884	VVA12	RTK	Enabled	2.24	0.05	0.11	13	128
V699	PRS400074536884	GCP13	RTK	Enabled	3.15	0.036	0.077	11	143
V700	PRS400074536884	GCP13	RTK	Enabled	2.2	0.048	0.093	10	124
V701	PRS400074536884	GCP13	RTK	Enabled	2.21	0.044	0.079	12	122
V651	IL_Morrison	NVA74	RTK	Enabled	2.03	0.026	0.05	14	120
V702	PRS400074536884	GCP13	RTK	Enabled	2.05	0.038	0.066	12	124
V703	PRS400074536884	GCP13	RTK	Enabled	2.05	0.04	0.069	12	124
V652	IL_Morrison	NVA74	RTK	Enabled	2.01	0.027	0.048	15	120
V653	IL_Morrison	VVA43	RTK	Enabled	2.98	0.074	0.122	14	120
V704	PRS400074536884	NVA13	RTK	Enabled	1.83	0.036	0.057	14	120
V705	PRS400074536884	NVA13	RTK	Enabled	1.66	0.047	0.074	14	120
V706	PRS400074536884	NVA13	RTK	Enabled	1.76	0.035	0.052	15	120
V707	PRS400074536884	NVA13	RTK	Enabled	1.72	0.035	0.052	15	120
V654	IL_Morrison	VVA43	RTK	Enabled	1.5	0.089	0.134	16	117
V708	PRS400074536884	NVA113	RTK	Enabled	1.48	0.046	0.059	16	120



V709	PRS400074536884	NVA113	RTK	Enabled	1.41	0.027	0.034	16	120
V710	PRS400074536884	NVA113	RTK	Enabled	1.4	0.045	0.057	15	120
V711	PRS400074536884	NVA113	RTK	Enabled	2.62	0.055	0.071	15	120
V712	PRS400074536884	NVA113	RTK	Enabled	1.82	0.039	0.05	15	120
V655	IL_Morrison	NVA112	RTK	Enabled	1.55	0.044	0.057	15	120
V656	IL_Morrison	NVA112	RTK	Enabled	1.66	0.039	0.05	15	120
V713	PRS400074536884	NVA126	RTK	Enabled	1.89	0.042	0.055	13	120
V714	PRS400074536884	NVA126	RTK	Enabled	1.72	0.044	0.057	13	120
V715	PRS400074536884	NVA126	RTK	Enabled	1.91	0.042	0.053	14	120
V657	IL_Morrison	VVA31	RTK	Enabled	2.13	0.046	0.067	14	111
V716	PRS400074536884	NVA99	RTK	Enabled	1.43	0.084	0.097	15	90
V717	PRS400074536884	NVA99	RTK	Enabled	1.57	0.061	0.073	14	120
V659	IL_Morrison	VVA31	RTK	Enabled	1.76	0.078	0.093	16	69
V718	PRS400074536884	NVA99	RTK	Enabled	1.46	0.065	0.079	15	120
V719	PRS400074536884	NVA99	RTK	Enabled	2.17	0.067	0.082	15	120
V660	IL_Morrison	VVA31	RTK	Enabled	1.9	0.077	0.095	17	120
V720	PRS400074536884	NVA99	RTK	Enabled	1.47	0.065	0.081	15	120
V721	PRS400074536884	NVA99	RTK	Enabled	1.79	0.058	0.07	17	120
V722	PRS400074536884	NVA99	RTK	Enabled	1.26	0.069	0.083	17	120
V723	PRS400074536884	NVA99	RTK	Enabled	1.21	0.053	0.061	18	120
V724	PRS400074536884	NVA99	RTK	Enabled	1.38	0.073	0.086	16	120
V661	IL_Morrison	NVA25	RTK	Enabled	1.62	0.034	0.045	15	120
V725	PRS631276951768	GCP22	RTK	Enabled	1.46	0.06	0.078	15	120
V726	PRS631276951768	GCP22	RTK	Enabled	1.46	0.047	0.061	15	120
V662	IL_Morrison	NVA25	RTK	Enabled	1.54	0.038	0.052	15	120
V727	PRS631276951768	GCP22	RTK	Enabled	1.46	0.073	0.097	15	120
V728	PRS631276951768	GCP22	RTK	Enabled	1.44	0.05	0.069	15	120
V729	PRS631276951768	VVA18	RTK	Enabled	2.15	0.07	0.105	13	77
V730	PRS631276951768	VVA18	RTK	Enabled	5.8	0.062	0.1	15	120
V731	PRS631276951768	VVA18	RTK	Enabled	1.41	0.062	0.092	15	120
V732	PRS631276951768	VVA18	RTK	Enabled	1.73	0.061	0.125	15	44
V733	PRS631276951768	VVA18	RTK	Enabled	1.52	0.064	0.095	14	120
V663	IL_Morrison	NVA138	RTK	Enabled	1.45	0.039	0.055	15	120
V664	IL_Morrison	NVA138	RTK	Enabled	1.5	0.04	0.056	15	120
V734	PRS631276951768	NVA22	RTK	Enabled	1.44	0.047	0.064	15	120



V735	PRS631276951768	NVA22	RTK	Enabled	1.48	0.046	0.062	15	120
V665	IL_Morrison	VVA50	RTK	Enabled	1.85	0.059	0.076	13	120
V666	IL_Morrison	VVA50	RTK	Enabled	1.99	0.086	0.108	14	120
V667	IL_Morrison	VVA50	RTK	Enabled	2	0.046	0.055	15	120
V668	IL_Morrison	GCP76	RTK	Enabled	1.64	0.053	0.06	14	120
V669	IL_Morrison	GCP76	RTK	Enabled	2.51	0.062	0.071	16	120
V670	IL_Morrison	GCP76	RTK	Enabled	1.45	0.076	0.084	16	65
V671	IL_Morrison	NVA26	RTK	Enabled	1.38	0.04	0.044	15	120
V672	IL_Morrison	NVA26	RTK	Enabled	1.42	0.032	0.036	16	120
V673	IL_Morrison	NVA26	RTK	Enabled	1.45	0.042	0.047	16	120
V674	IL_Morrison	VVA44	RTK	Enabled	2.03	0.049	0.063	11	110
V675	IL_Morrison	VVA44	RTK	Enabled	2.29	0.059	0.079	13	120
V676	IL_Morrison	VVA44	RTK	Enabled	1.84	0.077	0.089	9	66
V736	PRS400074536884	VVA28	RTK	Enabled	1.53	0.073	0.08	16	120
V737	PRS400074536884	VVA28	RTK	Enabled	1.75	0.084	0.099	15	120
V738	PRS400074536884	VVA28	RTK	Enabled	1.87	0.064	0.076	16	36
V739	PRS400074536884	VVA28	RTK	Enabled	1.78	0.06	0.077	16	120
V740	PRS400074536884	NVA136	RTK	Enabled	1.32	0.046	0.058	18	120
V741	PRS400074536884	NVA136	RTK	Enabled	1.25	0.068	0.088	18	120
V742	PRS400074536884	NVA136	RTK	Enabled	1.24	0.045	0.058	18	120
V743	PRS400074536884	NVA136	RTK	Enabled	1.42	0.055	0.071	18	29
V830	IL_Morrison	NVA98	RTK	Enabled	1.5	0.036	0.046	13	120
V831	IL_Morrison	NVA98	RTK	Enabled	1.47	0.039	0.052	13	120
V832	IL_Morrison	GCP75	RTK	Enabled	1.58	0.038	0.054	13	120
V833	IL_Morrison	GCP75	RTK	Enabled	1.55	0.05	0.073	13	120
V748	PRS400074536884	NVA21	RTK	Enabled	1.43	0.051	0.075	17	120
V834	IL_Morrison	GCP75	RTK	Enabled	1.57	0.042	0.062	13	120
V749	PRS400074536884	NVA21	RTK	Enabled	1.47	0.043	0.065	15	120
V750	PRS400074536884	NVA21	RTK	Enabled	1.37	0.051	0.076	16	120
V751	PRS400074536884	NVA21	RTK	Enabled	1.32	0.052	0.08	17	120
V752	PRS400074536884	NVA21	RTK	Enabled	1.61	0.074	0.117	14	37
V753	PRS400074536884	VVA42	RTK	Enabled	2.24	0.059	0.096	15	120
V835	IL_Morrison	GCP26	RTK	Enabled	2.3	0.037	0.058	12	120
V836	IL_Morrison	GCP26	RTK	Enabled	1.78	0.029	0.045	12	120
V754	PRS400074536884	VVA42	RTK	Enabled	2.77	0.071	0.106	15	66



V755	PRS400074536884	VVA42	RTK	Enabled	1.63	0.074	0.11	14	111
V837	IL_Morrison	NVA76	RTK	Enabled	1.27	0.04	0.047	15	121
V838	IL_Morrison	NVA76	RTK	Enabled	1.36	0.04	0.047	15	120
V756	PRS400074536884	VVA32	RTK	Enabled	1.36	0.066	0.073	18	120
V757	PRS400074536884	VVA32	RTK	Enabled	1.8	0.047	0.052	18	120
V839	IL_Morrison	VVA45	RTK	Enabled	1.76	0.039	0.043	13	120
V840	IL_Morrison	VVA45	RTK	Enabled	1.62	0.057	0.068	13	120
V758	PRS400074536884	GCP19	RTK	Enabled	1.51	0.042	0.045	17	120
V759	PRS400074536884	GCP19	RTK	Enabled	1.58	0.056	0.06	16	120
V760	PRS400074536884	GCP19	RTK	Enabled	1.54	0.059	0.062	16	120
V841	IL_Morrison	VVA49	RTK	Enabled	2.47	0.079	0.081	12	120
V842	IL_Morrison	VVA49	RTK	Enabled	1.84	0.069	0.075	11	120
V761	PRS400074536884	NVA19	RTK	Enabled	1.33	0.057	0.059	19	92
V843	IL_Morrison	VVA49	RTK	Enabled	2.66	0.062	0.063	13	120
V762	PRS400074536884	NVA19	RTK	Enabled	1.34	0.07	0.074	19	64
V763	PRS400074536884	NVA19	RTK	Enabled	1.67	0.066	0.072	15	65
V764	PRS400074536884	NVA67	RTK	Enabled	1.24	0.04	0.06	22	120
V765	PRS400074536884	NVA67	RTK	Enabled	1.4	0.037	0.056	18	120
V766	PRS400074536884	NVA67	RTK	Enabled	1.36	0.041	0.06	22	120
V767	PRS400074536884	GCP72	RTK	Enabled	1.52	0.043	0.055	21	120
V768	PRS400074536884	GCP72	RTK	Enabled	1.49	0.058	0.076	20	120
V769	PRS400074536884	NVA71	RTK	Enabled	1.73	0.066	0.084	15	120
V770	PRS400074536884	NVA71	RTK	Enabled	1.64	0.045	0.058	18	120
V771	PRS400074536884	NVA71	RTK	Enabled	1.66	0.063	0.083	17	120
V772	PRS400074536884	VVA29	RTK	Enabled	1.6	0.058	0.091	17	51
V773	PRS400074536884	VVA29	RTK	Enabled	1.33	0.063	0.106	20	50
V774	PRS400074536884	VVA29	RTK	Enabled	1.66	0.061	0.097	17	79
V775	PRS400074536884	VVA29	RTK	Enabled	1.43	0.063	0.1	19	19
V776	PRS400074536884	VVA29	RTK	Enabled	1.45	0.082	0.105	17	18
V777	PRS400074536884	VVA29	RTK	Enabled	1.53	0.082	0.102	17	119
V778	PRS400074536884	NVA69	RTK	Enabled	1.27	0.05	0.053	18	120
V779	PRS400074536884	NVA69	RTK	Enabled	1.32	0.07	0.076	17	120
V780	PRS400074536884	NVA69	RTK	Enabled	1.32	0.069	0.075	18	120
V781	PRS400074536884	VVA92	RTK	Enabled	1.46	0.083	0.107	14	23
V782	PRS400074536884	VVA92	RTK	Enabled	2.05	0.054	0.078	14	120



V783	PRS400074536884	VVA92	RTK	Enabled	2.09	0.057	0.077	12	102
V784	PRS400074536884	VVA92	RTK	Enabled	1.81	0.061	0.085	14	52
V785	PRS400074536884	VVA92	RTK	Enabled	1.64	0.075	0.107	13	109
V786	PRS400074536884	GCP71	RTK	Enabled	1.43	0.048	0.066	15	120
V787	PRS400074536884	GCP71	RTK	Enabled	1.51	0.076	0.107	15	35
V788	PRS400074536884	GCP71	RTK	Enabled	1.56	0.048	0.066	15	120
V789	PRS400074536884	GCP71	RTK	Enabled	1.42	0.067	0.09	16	120
V790	PRS400074536884	GCP71	RTK	Enabled	1.64	0.079	0.104	12	108
V791	PRS831957994173	NVA03	RTK	Enabled	1.2	0.068	0.071	18	49
V792	PRS831957994173	NVA03	RTK	Enabled	1.21	0.093	0.094	18	17
V793	PRS831957994173	NVA03	RTK	Enabled	1.21	0.061	0.064	18	120
V794	PRS831957994173	NVA03	RTK	Enabled	1.23	0.058	0.06	17	120
V795	PRS831957994173	NVA03	RTK	Enabled	1.24	0.078	0.081	19	120
V796	PRS831957994173	NVA03	RTK	Enabled	1.19	0.063	0.067	18	120
V797	PRS831957994173	GCP03	RTK	Enabled	1.23	0.067	0.076	17	69
V798	PRS831957994173	GCP03	RTK	Enabled	1.24	0.062	0.076	18	120
V799	PRS831957994173	GCP03	RTK	Enabled	1.25	0.053	0.065	19	120
V800	PRS831957994173	GCP03	RTK	Enabled	1.3	0.065	0.084	19	120
V801	PRS831957994173	GCP03	RTK	Enabled	1.3	0.058	0.077	18	120
V802	PRS831957994173	GCP03	RTK	Enabled	1.39	0.075	0.101	17	18
V803	PRS831957994173	GCP03	RTK	Enabled	1.45	0.051	0.071	17	120
V804	PRS400074536884	NVA116	RTK	Enabled	1.4	0.064	0.084	20	120
V805	PRS400074536884	NVA116	RTK	Enabled	1.36	0.058	0.076	20	120
V806	PRS400074536884	NVA116	RTK	Enabled	1.37	0.071	0.091	19	120
V807	PRS400074536884	NVA17	RTK	Enabled	1.09	0.064	0.08	22	120
V808	PRS400074536884	NVA17	RTK	Enabled	1.12	0.067	0.084	20	120
V809	PRS400074536884	NVA17	RTK	Enabled	1.11	0.085	0.104	21	52
V810	PRS400074536884	NVA17	RTK	Enabled	1.09	0.085	0.105	21	114
V811	PRS400074536884	VVA90	RTK	Enabled	1.4	0.085	0.104	18	16
V812	PRS400074536884	VVA90	RTK	Enabled	1.46	0.065	0.085	16	120
V813	PRS400074536884	VVA90	RTK	Enabled	1.68	0.073	0.103	17	110
V814	PRS693183039848	GCP17	RTK	Enabled	1.36	0.067	0.102	17	77
V815	PRS693183039848	GCP17	RTK	Enabled	1.6	0.07	0.106	16	88
V816	PRS693183039848	GCP17	RTK	Enabled	1.38	0.051	0.076	17	120
V817	PRS693183039848	GCP17	RTK	Enabled	1.72	0.053	0.085	17	120



V818	PRS693183039848	NVA41	RTK	Enabled	1.54	0.054	0.076	16	120
V819	PRS693183039848	NVA41	RTK	Enabled	1.43	0.051	0.072	16	120
V820	PRS693183039848	NVA41	RTK	Enabled	1.51	0.073	0.101	13	17
V821	PRS693183039848	VVA30	RTK	Enabled	1.77	0.087	0.106	14	33
V822	PRS693183039848	VVA30	RTK	Enabled	1.39	0.097	0.102	18	120
V823	PRS693183039848	VVA30	RTK	Enabled	1.43	0.076	0.092	17	102
V824	PRS810430617562	GCP111	RTK	Enabled	1.29	0.065	0.074	18	120
V825	PRS810430617562	GCP111	RTK	Enabled	1.32	0.061	0.066	16	120
V826	PRS810430617562	GCP111	RTK	Enabled	1.53	0.048	0.053	13	120
V827	PRS810430617562	GCP111	RTK	Enabled	1.53	0.053	0.064	15	120
V828	PRS810430617562	NVA137	RTK	Enabled	1.18	0.051	0.063	19	120
V829	PRS810430617562	NVA137	RTK	Enabled	1.22	0.053	0.064	18	120
V863	PRS400074536884	NVA68	RTK	Enabled	1.39	0.071	0.108	19	62
V864	PRS400074536884	NVA68	RTK	Enabled	1.43	0.067	0.107	20	40
V865	PRS400074536884	NVA68	RTK	Enabled	1.62	0.063	0.096	17	120
V866	PRS400074536884	NVA68	RTK	Enabled	1.88	0.059	0.085	16	120
V867	PRS400074536884	NVA68	RTK	Enabled	1.16	0.05	0.068	18	120
V868	PRS400074536884	GCP41	RTK	Enabled	1.36	0.059	0.062	18	120
V869	PRS400074536884	GCP41	RTK	Enabled	1.25	0.084	0.087	20	22
V870	PRS400074536884	GCP41	RTK	Enabled	1.17	0.054	0.056	19	120
V871	PRS400074536884	GCP41	RTK	Enabled	1.15	0.085	0.089	18	58
V872	PRS400074536884	GCP41	RTK	Enabled	1.16	0.058	0.063	18	120
V873	PRS400074536884	GCP41	RTK	Enabled	1.15	0.056	0.059	19	120
V874	PRS400074536884	NVA117	RTK	Enabled	1.53	0.063	0.083	17	120
V875	PRS400074536884	NVA117	RTK	Enabled	1.64	0.068	0.098	16	120
V876	PRS400074536884	NVA117	RTK	Enabled	1.6	0.046	0.077	17	120
V877	PRS400074536884	NVA117	RTK	Enabled	2.45	0.038	0.103	17	58
V878	PRS400074536884	NVA117	RTK	Enabled	2.47	0.036	0.098	17	59
V879	PRS400074536884	NVA18	RTK	Enabled	1.59	0.065	0.103	19	120
V880	PRS400074536884	NVA18	RTK	Enabled	1.55	0.054	0.081	20	120
V881	PRS400074536884	NVA18	RTK	Enabled	1.49	0.083	0.114	21	62
V882	PRS400074536884	NVA18	RTK	Enabled	1.32	0.075	0.104	23	120
V883	PRS400074536884	NVA18	RTK	Enabled	1.28	0.049	0.066	20	120
V884	PRS400074536884	NVA18	RTK	Enabled	1.4	0.057	0.087	20	120
V844	IA_Bettendorf	NVA131	RTK	Enabled	1.93	0.044	0.058	14	120



V845	IA_Bettendorf	NVA131	RTK	Enabled	1.92	0.036	0.047	13	120
V885	PRS400074536884	GCP18	RTK	Enabled	1.1	0.079	0.091	23	120
V886	PRS400074536884	GCP18	RTK	Enabled	1.1	0.06	0.071	23	120
V887	PRS400074536884	GCP18	RTK	Enabled	1.18	0.057	0.069	22	120
V888	PRS400074536884	GCP18	RTK	Enabled	1.46	0.059	0.073	18	120
V846	IA_Bettendorf	GCP74	RTK	Enabled	1.62	0.044	0.057	14	120
V889	PRS400074536884	GCP18	RTK	Enabled	1.64	0.042	0.054	14	120
V847	IA_Bettendorf	GCP74	RTK	Enabled	1.66	0.042	0.057	14	120
V848	IA_Bettendorf	VVA48	RTK	Enabled	2.22	0.053	0.077	13	120
V890	PRS400074536884	NVA73	RTK	Enabled	1.29	0.047	0.069	20	120
V849	IA_Bettendorf	VVA48	RTK	Enabled	2.1	0.058	0.089	13	120
V891	PRS400074536884	NVA73	RTK	Enabled	1.39	0.045	0.07	18	120
V850	IA_Bettendorf	VVA48	RTK	Enabled	2.66	0.051	0.078	14	120
V892	PRS400074536884	NVA73	RTK	Enabled	1.33	0.052	0.08	19	120
V851	IA_Bettendorf	NVA129	RTK	Enabled	1.46	0.043	0.064	16	120
V852	IA_Bettendorf	NVA129	RTK	Enabled	1.52	0.038	0.058	16	120
V893	PRS400074536884	VVA40	RTK	Enabled	1.76	0.054	0.085	19	120
V894	PRS400074536884	VVA40	RTK	Enabled	1.19	0.053	0.079	19	120
V853	IA_Bettendorf	NVA23	RTK	Enabled	2.77	0.068	0.08	15	120
V854	IA_Bettendorf	NVA23	RTK	Enabled	1.62	0.069	0.082	15	120
V855	IA_Bettendorf	NVA23	RTK	Enabled	1.39	0.071	0.079	17	120
V856	IA_Bettendorf	NVA23	RTK	Enabled	1.25	0.07	0.077	17	120
V895	PRS400074536884	GCP73	RTK	Enabled	1.12	0.059	0.063	21	99
V896	PRS400074536884	GCP73	RTK	Enabled	1.04	0.06	0.064	21	87
V897	PRS400074536884	GCP73	RTK	Enabled	1.05	0.085	0.091	21	84
V898	PRS400074536884	GCP73	RTK	Enabled	1.12	0.084	0.091	19	33
V899	PRS400074536884	GCP73	RTK	Enabled	1.22	0.083	0.095	18	113
V857	IA_Bettendorf	VVA33	RTK	Disabled	1.78	0.077	0.126	13	96
V900	PRS400074536884	GCP73	RTK	Enabled	1.22	0.068	0.078	19	62
V901	PRS400074536884	GCP73	RTK	Enabled	1.19	0.071	0.083	18	120
V902	PRS400074536884	GCP73	RTK	Enabled	1.39	0.06	0.071	17	120
V903	PRS400074536884	GCP73	RTK	Enabled	1.39	0.083	0.1	17	96
V858	IA_Bettendorf	VVA33	RTK	Enabled	1.92	0.083	0.107	14	120
V859	IA_Bettendorf	VVA33	RTK	Enabled	1.52	0.069	0.087	14	120
V860	IL_Morrison	GCP23	RTK	Enabled	1.39	0.031	0.037	15	120



V861	IL_Morrison	GCP23	RTK	Enabled	1.39	0.024	0.029	15	120
V862	IL_Morrison	GCP23	RTK	Enabled	1.84	0.022	0.026	15	120
V904	PRS400074536884	NVA77	RTK	Enabled	1.14	0.049	0.061	19	120
V905	PRS400074536884	NVA77	RTK	Enabled	1.21	0.08	0.101	18	120
V906	PRS631276951768	GCP25	RTK	Enabled	1.4	0.054	0.062	17	120
V907	PRS631276951768	GCP25	RTK	Enabled	1.47	0.085	0.093	16	16
V908	PRS631276951768	GCP25	RTK	Enabled	1.47	0.085	0.093	16	16
V909	PRS631276951768	GCP25	RTK	Enabled	1.52	0.05	0.056	18	120
V910	PRS631276951768	GCP25	RTK	Enabled	1.48	0.085	0.096	16	37
V911	PRS631276951768	GCP25	RTK	Enabled	1.64	0.054	0.062	15	120
V912	PRS631276951768	GCP25	RTK	Enabled	1.62	0.074	0.09	16	81
V913	PRS631276951768	GCP25	RTK	Enabled	1.42	0.073	0.089	18	120
V914	IL_Morrison	NVA75	RTK	Enabled	1.33	0.041	0.045	17	120
V915	IL_Morrison	NVA75	RTK	Enabled	1.64	0.048	0.053	17	120
V916	IL_Morrison	VVA41	RTK	Enabled	1.58	0.107	0.12	14	122
V917	IL_Morrison	VVA41	RTK	Enabled	1.52	0.092	0.114	14	122
V919	IL_Morrison	GCP70	RTK	Enabled	1.3	0.043	0.053	15	120
V920	IL_Morrison	GCP70	RTK	Enabled	1.41	0.029	0.036	15	120
V921	IL_Morrison	VVA35	RTK	Enabled	1.48	0.048	0.064	14	120
V922	IL_Morrison	VVA35	RTK	Enabled	1.7	0.042	0.055	13	120
V994	PRS400074536884	GCP20	RTK	Enabled	1.19	0.044	0.061	19	120
V995	PRS400074536884	GCP20	RTK	Enabled	1.18	0.057	0.09	19	61
V923	IL_Morrison	NVA120	RTK	Enabled	1.53	0.034	0.051	14	120
V996	PRS400074536884	GCP20	RTK	Enabled	1.92	0.062	0.096	17	80
V924	IL_Morrison	NVA120	RTK	Enabled	1.98	0.038	0.058	14	120
V997	PRS400074536884	GCP20	RTK	Enabled	1.37	0.055	0.085	18	120
V998	PRS400074536884	GCP20	RTK	Enabled	1.65	0.047	0.078	17	120
V925	IL_Morrison	NVA72	RTK	Enabled	4.95	0.059	0.098	12	118
V999	PRS400074536884	NVA20	RTK	Enabled	1.9	0.063	0.105	15	22
V926	IL_Morrison	NVA72	RTK	Enabled	2.08	0.056	0.091	12	120
V1000	PRS400074536884	NVA20	RTK	Enabled	2.63	0.064	0.106	12	76
V927	IL_Morrison	NVA72	RTK	Enabled	2.78	0.039	0.063	13	120
V928	IL_Morrison	NVA72	RTK	Enabled	3.08	0.05	0.078	13	91
V1001	PRS400074536884	NVA20	RTK	Enabled	1.87	0.071	0.106	15	39
V1002	PRS400074536884	NVA20	RTK	Enabled	1.82	0.068	0.104	15	30



V1003	PRS400074536884	NVA20	RTK	Enabled	1.65	0.057	0.086	14	87
V1004	PRS400074536884	NVA20	RTK	Enabled	1.59	0.065	0.09	15	95
V1005	PRS400074536884	NVA20	RTK	Enabled	1.44	0.052	0.072	17	120
V1006	PRS400074536884	NVA20	RTK	Enabled	1.56	0.057	0.076	13	26
V1007	PRS400074536884	NVA20	RTK	Enabled	1.56	0.079	0.105	15	68
V929	IL_Morrison	VVA21	RTK	Enabled	1.8	0.078	0.105	13	120
V930	IL_Morrison	VVA21	RTK	Enabled	2.29	0.085	0.11	12	120
V931	IL_Morrison	NVA66	RTK	Enabled	1.38	0.044	0.052	14	120
V932	IL_Morrison	NVA66	RTK	Enabled	1.42	0.04	0.046	15	120
V1008	PRS400074536884	VVA91	RTK	Enabled	1.25	0.069	0.079	18	45
V1009	PRS400074536884	VVA91	RTK	Enabled	1.25	0.064	0.074	18	20
V1010	PRS400074536884	VVA91	RTK	Enabled	1.46	0.069	0.075	16	120
V933	IL_Morrison	GCP66	RTK	Enabled	1.47	0.065	0.067	14	120
V1011	PRS400074536884	VVA91	RTK	Enabled	1.24	0.085	0.089	17	52
V1012	PRS400074536884	VVA91	RTK	Enabled	1.24	0.085	0.089	20	45
V934	IL_Morrison	GCP66	RTK	Enabled	1.49	0.071	0.07	13	120
V935	IL_Morrison	GCP66	RTK	Enabled	1.49	0.072	0.073	14	120
V1013	PRS400074536884	VVA91	RTK	Enabled	1.36	0.078	0.087	19	120
V936	IL_Morrison	GCP66	RTK	Enabled	1.62	0.069	0.071	14	60
V1014	PRS400074536884	VVA91	RTK	Enabled	1.36	0.074	0.08	19	120
V937	IL_Morrison	NVA09	RTK	Enabled	1.91	0.043	0.062	13	120
V938	IL_Morrison	NVA09	RTK	Enabled	1.96	0.045	0.067	13	120
V939	IL_Morrison	NVA09	RTK	Enabled	1.81	0.054	0.084	13	120
V940	IL_Morrison	GCP09	RTK	Enabled	2.06	0.04	0.081	12	89
V941	IL_Morrison	GCP09	RTK	Enabled	2.1	0.037	0.074	14	120
V942	IL_Morrison	GCP09	RTK	Enabled	1.66	0.036	0.078	14	120
V943	IL_Morrison	GCP09	RTK	Enabled	1.8	0.035	0.073	13	120
V944	IL_Morrison	GCP09	RTK	Enabled	2.22	0.045	0.093	12	120
V945	IL_Morrison	VVA24	RTK	Enabled	2.07	0.046	0.084	13	120
V946	IL_Morrison	VVA24	RTK	Enabled	1.96	0.054	0.092	13	73
V947	IL_Morrison	VVA24	RTK	Enabled	1.9	0.046	0.074	13	120
V948	IL_Morrison	VVA15	RTK	Disabled	1.4	0.093	0.111	13	37
V949	IL_Morrison	VVA15	RTK	Enabled	1.44	0.081	0.104	14	120
V950	IL_Morrison	VVA15	RTK	Enabled	2.69	0.066	0.085	15	120
V951	IL_Morrison	NVA121	RTK	Enabled	1.73	0.042	0.053	16	120



V952	IL_Morrison	NVA121	RTK	Enabled	1.34	0.049	0.062	18	120
V953	IL_Morrison	NVA121	RTK	Enabled	1.56	0.05	0.063	18	120
V954	IL_Morrison	VVA23	RTK	Enabled	1.55	0.059	0.076	15	120
V955	IL_Morrison	VVA23	RTK	Enabled	3.99	0.058	0.074	15	120
V956	IL_Morrison	VVA23	RTK	Enabled	1.93	0.081	0.106	15	120
V1015	PRS631276951768	VVA20	RTK	Enabled	1.44	0.08	0.109	19	41
V957	IL_Morrison	VVA23	RTK	Enabled	2.1	0.075	0.102	14	31
V1018	PRS631276951768	VVA20	RTK	Enabled	1.78	0.054	0.094	16	64
V958	IL_Morrison	GCP90	RTK	Enabled	1.52	0.036	0.055	16	120
V1020	PRS631276951768	VVA20	RTK	Enabled	1.73	0.05	0.075	16	120
V959	IL_Morrison	GCP90	RTK	Enabled	1.3	0.039	0.057	16	120
V1021	PRS631276951768	VVA20	RTK	Enabled	1.93	0.06	0.094	17	69
V960	IL_Morrison	GCP90	RTK	Enabled	1.51	0.038	0.054	15	120
V1022	PRS631276951768	VVA20	RTK	Enabled	1.72	0.049	0.078	18	120
V961	IL_Morrison	GCP90	RTK	Enabled	1.5	0.044	0.062	15	120
V962	IL_Morrison	NVA135	RTK	Enabled	1.44	0.033	0.041	15	120
V963	IL_Morrison	NVA135	RTK	Enabled	1.59	0.04	0.047	14	120
V1024	PRS631276951768	NVA62	RTK	Enabled	1.52	0.081	0.092	17	74
V1025	PRS631276951768	NVA62	RTK	Enabled	1.49	0.054	0.064	16	120
V1026	PRS631276951768	NVA62	RTK	Enabled	1.29	0.06	0.072	18	120
V1027	PRS631276951768	GCP64	RTK	Enabled	1.45	0.07	0.092	16	52
V1028	PRS631276951768	GCP64	RTK	Enabled	1.85	0.05	0.071	14	120
V1029	PRS631276951768	GCP64	RTK	Enabled	1.48	0.057	0.077	14	120
V1030	PRS831957994173	NVA08	RTK	Enabled	1.33	0.052	0.067	18	120
V1031	PRS831957994173	NVA08	RTK	Enabled	1.36	0.055	0.072	18	120
V1032	PRS831957994173	VVA05	RTK	Enabled	1.45	0.106	0.127	18	38
V1033	PRS831957994173	VVA05	RTK	Enabled	1.69	0.074	0.091	17	52
V1034	PRS831957994173	VVA05	RTK	Enabled	1.37	0.132	0.112	18	33
V1035	PRS831957994173	VVA05	RTK	Enabled	1.61	0.138	0.126	17	17
V1039	PRS831957994173	VVA05	RTK	Enabled	1.55	0.099	0.108	20	120



SAM, LLC

1224 Fern Ridge Parkway, Suite 110, St. Louis, MO 63141

Ofc 314.576.9878 Fax 314.576.9922

info@sam.biz www.sam.biz

Champaign County, Illinois East Zone.

Vector ID	From	To	Solution Type	Status	PDOP	H. Precision (95%)	V. Precision (95%)	Satellites	Epochs
V441	PRS19733588799	GCP55	RTK	Enabled	1.36	0.055	0.062	15	120
V442	PRS19733588799	GCP55	RTK	Enabled	1.36	0.061	0.07	16	120
V443	PRS19733588799	GCP55	RTK	Enabled	1.42	0.051	0.061	14	120
V444	PRS19733588799	GCP55	RTK	Enabled	1.58	0.052	0.064	14	120
V445	PRS19733588799	GCP55	RTK	Enabled	1.53	0.05	0.064	14	120
V446	PRS19733588799	GCP55	RTK	Enabled	1.83	0.046	0.064	13	120
V155	PRS336744033606	GCP56	RTK	Enabled	1.66	0.041	0.066	14	120
V156	PRS336744033606	GCP56	RTK	Enabled	1.66	0.05	0.08	13	120
V12	PRS336744033606	GCP57	RTK	Enabled	1.71	0.038	0.059	13	118
V13	PRS336744033606	GCP57	RTK	Enabled	1.64	0.045	0.066	16	120
V326	PRS336744033606	GCP92	RTK	Enabled	1.6	0.045	0.095	15	120
V425	PRS336744033606	GCP92	RTK	Enabled	1.36	0.048	0.066	14	122
V426	PRS336744033606	GCP92	RTK	Enabled	1.36	0.047	0.066	14	124
V427	PRS336744033606	GCP92	RTK	Enabled	1.31	0.047	0.065	15	121
V428	PRS336744033606	GCP92	RTK	Enabled	1.55	0.046	0.065	15	121
V394	PRS336744033606	GCP93	RTK	Enabled	1.45	0.052	0.064	13	120
V395	PRS336744033606	GCP93	RTK	Enabled	1.46	0.056	0.072	13	120
V396	PRS336744033606	GCP93	RTK	Enabled	1.72	0.05	0.067	13	120
V254	PRS336744033606	GCP94	RTK	Enabled	1.8	0.051	0.074	13	120
V255	PRS336744033606	GCP94	RTK	Enabled	1.83	0.038	0.058	13	120
V366	PRS336744033606	GCP95	RTK	Enabled	1.55	0.05	0.063	15	120
V367	PRS336744033606	GCP95	RTK	Enabled	1.63	0.051	0.066	14	120
V368	PRS336744033606	GCP95	RTK	Enabled	1.62	0.056	0.074	14	120
V369	PRS336744033606	GCP95	RTK	Enabled	2.53	0.049	0.067	13	120
V246	PRS336744033606	GCP96	RTK	Enabled	1.35	0.043	0.057	16	120
V247	PRS336744033606	GCP96	RTK	Enabled	1.34	0.042	0.055	16	120



V212	PRS336744033606	GCP97	RTK	Enabled	1.61	0.044	0.055	13	120
V213	PRS336744033606	GCP97	RTK	Enabled	1.59	0.042	0.052	13	120
V137	PRS336744033606	GCP98	RTK	Enabled	1.41	0.027	0.032	16	120
V138	PRS336744033606	GCP98	RTK	Enabled	1.4	0.034	0.041	16	120
V52	PRS336744033606	GCP99	RTK	Enabled	1.39	0.032	0.035	15	120
V53	PRS336744033606	GCP99	RTK	Enabled	1.49	0.027	0.029	14	120
V91	PRS336744033606	GCP100	RTK	Enabled	1.82	0.033	0.071	13	120
V92	PRS336744033606	GCP100	RTK	Enabled	1.43	0.027	0.051	15	120
V93	PRS336744033606	GCP100	RTK	Enabled	1.79	0.03	0.058	15	120
V94	PRS336744033606	GCP100	RTK	Enabled	1.67	0.029	0.054	14	120
V172	PRS336744033606	GCP101	RTK	Enabled	2.04	0.032	0.064	14	120
V173	PRS336744033606	GCP101	RTK	Enabled	2.01	0.03	0.058	14	120
V174	PRS336744033606	GCP101	RTK	Enabled	1.97	0.03	0.058	14	120
V181	PRS336744033606	GCP102	RTK	Enabled	1.64	0.034	0.045	15	120
V182	PRS336744033606	GCP102	RTK	Enabled	1.84	0.037	0.049	15	120
V183	PRS336744033606	GCP102	RTK	Enabled	1.44	0.033	0.043	15	120
V184	PRS336744033606	GCP102	RTK	Enabled	1.43	0.034	0.044	15	120
V160	PRS336744033606	GCP103	RTK	Enabled	1.45	0.04	0.051	14	120
V161	PRS336744033606	GCP103	RTK	Enabled	1.46	0.045	0.059	14	120
V147	PRS336744033606	GCP104	RTK	Enabled	1.36	0.041	0.059	14	120
V148	PRS336744033606	GCP104	RTK	Enabled	1.45	0.041	0.061	14	120
V149	PRS336744033606	GCP104	RTK	Enabled	1.44	0.046	0.07	14	120
V122	PRS336744033606	GCP105	RTK	Enabled	1.22	0.055	0.065	17	120
V123	PRS336744033606	GCP105	RTK	Enabled	1.22	0.044	0.052	18	120
V9	PRS336744033606	GCP106	RTK	Enabled	1.67	0.042	0.086	14	120
V447	PRS336744033606	GCP106	RTK	Enabled	1.79	0.03	0.067	14	120
V448	PRS336744033606	GCP106	RTK	Enabled	2.05	0.042	0.087	13	30
V449	PRS336744033606	GCP106	RTK	Enabled	2.07	0.035	0.073	13	120
V450	PRS336744033606	GCP106	RTK	Enabled	2.06	0.032	0.061	15	120
V34	PRS336744033606	GCP107	RTK	Enabled	1.65	0.054	0.081	14	120



V35	PRS336744033606	GCP107	RTK	Enabled	1.68	0.043	0.064	14	120
V103	PRS19733588799	GCP108	RTK	Enabled	1.44	0.084	0.094	14	80
V104	PRS19733588799	GCP108	RTK	Enabled	1.39	0.064	0.072	15	120
V27	PRS336744033606	GCP109	RTK	Enabled	1.55	0.059	0.072	13	120
V28	PRS336744033606	GCP109	RTK	Enabled	1.54	0.07	0.088	14	120
V336	PRS336744033606	GCP110	RTK	Enabled	2.45	0.081	0.092	9	120
V397	PRS336744033606	GCP110	RTK	Enabled	2.23	0.045	0.083	11	120
V398	PRS336744033606	GCP110	RTK	Enabled	2.62	0.043	0.087	11	120
V429	PRS336744033606	GCP110	RTK	Enabled	3.04	0.044	0.079	12	118
V430	PRS336744033606	GCP110	RTK	Enabled	2.18	0.046	0.079	12	120
V431	PRS336744033606	GCP110	RTK	Enabled	2.48	0.042	0.071	12	89
V432	PRS336744033606	GCP110	RTK	Enabled	3.45	0.052	0.084	12	49
V291	PRS336744033606	NVA42	RTK	Enabled	1.44	0.057	0.068	15	120
V292	PRS336744033606	NVA42	RTK	Enabled	5.59	0.053	0.062	16	120
V307	PRS336744033606	NVA43	RTK	Enabled	1.43	0.047	0.07	14	120
V308	PRS336744033606	NVA43	RTK	Enabled	1.44	0.056	0.084	14	120
V309	PRS336744033606	NVA43	RTK	Enabled	1.56	0.046	0.07	14	120
V349	PRS815686591658	NVA44	RTK	Enabled	1.67	0.058	0.085	13	120
V350	PRS815686591658	NVA44	RTK	Enabled	1.79	0.048	0.072	13	120
V351	PRS815686591658	NVA44	RTK	Enabled	2.56	0.061	0.092	13	60
V66	PRS336744033606	NVA45	RTK	Enabled	1.51	0.034	0.05	15	120
V67	PRS336744033606	NVA45	RTK	Enabled	1.52	0.044	0.066	15	180
V68	PRS336744033606	NVA45	RTK	Enabled	1.54	0.035	0.052	14	120
V230	PRS336744033606	NVA46	RTK	Enabled	1.28	0.05	0.055	16	120
V231	PRS336744033606	NVA46	RTK	Enabled	1.49	0.048	0.052	15	120
V232	PRS336744033606	NVA46	RTK	Enabled	1.39	0.05	0.054	16	120
V206	PRS336744033606	NVA47	RTK	Enabled	1.33	0.022	0.025	16	120
V207	PRS336744033606	NVA47	RTK	Enabled	1.27	0.025	0.029	17	120
V139	PRS336744033606	NVA48	RTK	Enabled	1.2	0.039	0.041	16	120
V140	PRS336744033606	NVA48	RTK	Enabled	2.78	0.025	0.026	16	120
V141	PRS336744033606	NVA48	RTK	Enabled	1.29	0.045	0.048	16	120



V80	PRS336744033606	NVA49	RTK	Enabled	1.51	0.03	0.031	13	120
V81	PRS336744033606	NVA49	RTK	Enabled	1.51	0.03	0.031	13	120
V19	PRS336744033606	NVA50	RTK	Enabled	1.8	0.077	0.098	14	15
V20	PRS336744033606	NVA50	RTK	Enabled	1.77	0.048	0.06	13	89
V21	PRS336744033606	NVA50	RTK	Enabled	1.76	0.045	0.057	14	120
V29	PRS336744033606	NVA51	RTK	Enabled	1.61	0.065	0.093	13	100
V30	PRS336744033606	NVA51	RTK	Enabled	2.61	0.073	0.109	13	120
V127	PRS336744033606	NVA52	RTK	Enabled	1.7	0.044	0.06	14	120
V128	PRS336744033606	NVA52	RTK	Enabled	2.18	0.047	0.065	14	120
V274	PRS336744033606	NVA140	RTK	Enabled	1.45	0.05	0.061	15	120
V275	PRS336744033606	NVA140	RTK	Enabled	1.35	0.049	0.058	15	120
V262	PRS336744033606	NVA141	RTK	Enabled	1.98	0.043	0.081	14	120
V263	PRS336744033606	NVA141	RTK	Enabled	1.94	0.042	0.079	14	120
V332	PRS336744033606	NVA142	RTK	Enabled	1.56	0.047	0.07	14	120
V333	PRS336744033606	NVA142	RTK	Enabled	1.55	0.072	0.106	14	100
V374	PRS336744033606	NVA143	RTK	Enabled	1.58	0.051	0.081	14	120
V376	PRS336744033606	NVA143	RTK	Enabled	1.78	0.047	0.074	14	120
V377	PRS336744033606	NVA143	RTK	Enabled	2.2	0.048	0.074	15	120
V378	PRS336744033606	NVA143	RTK	Enabled	1.48	0.047	0.072	15	120
V379	PRS336744033606	NVA143	RTK	Enabled	1.56	0.047	0.072	15	120
V380	PRS336744033606	NVA143	RTK	Enabled	2.25	0.047	0.072	15	120
V346	PRS336744033606	NVA144	RTK	Enabled	1.57	0.051	0.067	14	120
V347	PRS336744033606	NVA144	RTK	Enabled	1.6	0.053	0.069	14	102
V348	PRS336744033606	NVA144	RTK	Enabled	1.59	0.05	0.065	13	120
V244	PRS336744033606	NVA145	RTK	Enabled	1.95	0.047	0.084	14	120
V245	PRS336744033606	NVA145	RTK	Enabled	1.52	0.054	0.093	14	120
V300	PRS336744033606	NVA146	RTK	Enabled	1.25	0.041	0.045	15	120
V301	PRS336744033606	NVA146	RTK	Enabled	1.24	0.046	0.049	15	120
V264	PRS336744033606	NVA147	RTK	Enabled	1.3	0.041	0.056	18	120
V265	PRS336744033606	NVA147	RTK	Enabled	1.29	0.046	0.061	18	120
V58	PRS336744033606	NVA148	RTK	Enabled	1.48	0.038	0.044	15	120



V59	PRS336744033606	NVA148	RTK	Enabled	1.52	0.037	0.043	15	120
V50	PRS336744033606	NVA149	RTK	Enabled	1.27	0.04	0.045	17	120
V51	PRS336744033606	NVA149	RTK	Enabled	1.27	0.025	0.028	17	120
V179	PRS336744033606	NVA150	RTK	Enabled	1.22	0.025	0.032	18	120
V180	PRS336744033606	NVA150	RTK	Enabled	1.49	0.031	0.039	18	120
V208	PRS336744033606	NVA151	RTK	Enabled	1.53	0.041	0.045	13	120
V209	PRS336744033606	NVA151	RTK	Enabled	1.69	0.028	0.03	13	120
V135	PRS336744033606	NVA152	RTK	Enabled	1.48	0.023	0.028	18	120
V136	PRS336744033606	NVA152	RTK	Enabled	2.11	0.028	0.033	18	120
V40	PRS336744033606	NVA153	RTK	Enabled	1.25	0.036	0.039	17	120
V41	PRS336744033606	NVA153	RTK	Enabled	1.42	0.031	0.034	16	120
V87	PRS336744033606	NVA154	RTK	Enabled	1.81	0.03	0.056	13	120
V88	PRS336744033606	NVA154	RTK	Enabled	1.84	0.03	0.057	13	120
V191	PRS336744033606	NVA155	RTK	Enabled	1.62	0.058	0.073	13	120
V192	PRS336744033606	NVA155	RTK	Enabled	1.62	0.072	0.095	13	45
V193	PRS336744033606	NVA155	RTK	Enabled	1.74	0.052	0.07	13	120
V194	PRS336744033606	NVA155	RTK	Enabled	1.63	0.072	0.096	13	78
V214	PRS336744033606	NVA156	RTK	Enabled	1.36	0.041	0.055	14	120
V215	PRS336744033606	NVA156	RTK	Enabled	1.36	0.041	0.054	15	120
V242	PRS336744033606	NVA157	RTK	Enabled	1.68	0.045	0.093	14	120
V243	PRS336744033606	NVA157	RTK	Enabled	1.67	0.045	0.092	14	120
V17	PRS336744033606	NVA158	RTK	Enabled	2.42	0.057	0.079	12	120
V18	PRS336744033606	NVA158	RTK	Enabled	2.09	0.069	0.093	13	120
V150	PRS336744033606	NVA159	RTK	Enabled	1.67	0.048	0.08	13	120
V151	PRS336744033606	NVA159	RTK	Enabled	1.69	0.041	0.069	13	120
V152	PRS336744033606	NVA159	RTK	Enabled	1.7	0.052	0.089	13	120
V153	PRS336744033606	NVA159	RTK	Enabled	1.7	0.036	0.061	13	120
V154	PRS336744033606	NVA159	RTK	Enabled	1.71	0.035	0.058	14	120
V169	PRS336744033606	NVA160	RTK	Enabled	1.64	0.029	0.061	15	120
V170	PRS336744033606	NVA160	RTK	Enabled	2.01	0.03	0.069	15	120
V171	PRS336744033606	NVA160	RTK	Enabled	1.65	0.03	0.065	15	120



V108	PRS19733588799	NVA161	RTK	Enabled	1.61	0.047	0.088	15	120
V109	PRS19733588799	NVA161	RTK	Enabled	1.74	0.046	0.09	14	120
V99	PRS336744033606	NVA162	RTK	Enabled	1.48	0.045	0.062	16	120
V100	PRS336744033606	NVA162	RTK	Enabled	1.49	0.045	0.061	16	120
V117	PRS336744033606	NVA163	RTK	Enabled	1.29	0.072	0.092	16	120
V118	PRS336744033606	NVA163	RTK	Enabled	1.36	0.082	0.105	16	117
V1	PRS336744033606	NVA164	RTK	Enabled	1.38	0.042	0.045	16	120
V2	PRS336744033606	NVA164	RTK	Enabled	1.32	0.049	0.053	16	120
V10	PRS336744033606	NVA165	RTK	Enabled	2.07	0.041	0.082	14	120
V11	PRS336744033606	NVA165	RTK	Enabled	1.69	0.035	0.065	15	120
V167	PRS336744033606	NVA166	RTK	Enabled	1.86	0.039	0.074	15	120
V168	PRS336744033606	NVA166	RTK	Enabled	1.61	0.039	0.076	15	120
V360	PRS336744033606	NVA167	RTK	Enabled	1.49	0.058	0.062	13	120
V361	PRS336744033606	NVA167	RTK	Enabled	2	0.065	0.07	14	120
V362	PRS336744033606	NVA167	RTK	Enabled	1.46	0.057	0.061	14	60
V256	PRS336744033606	NVA168	RTK	Enabled	1.78	0.038	0.068	14	120
V257	PRS336744033606	NVA168	RTK	Enabled	1.78	0.039	0.07	15	120
V78	PRS336744033606	NVA169	RTK	Enabled	1.41	0.046	0.049	14	120
V79	PRS336744033606	NVA169	RTK	Enabled	1.42	0.037	0.039	14	120
V210	PRS336744033606	NVA170	RTK	Enabled	1.57	0.031	0.036	13	120
V211	PRS336744033606	NVA170	RTK	Enabled	1.57	0.035	0.041	13	120
V313	PRS336744033606	NVA171	RTK	Enabled	2.1	0.047	0.078	13	120
V314	PRS336744033606	NVA171	RTK	Enabled	2.51	0.057	0.091	11	120
V38	PRS336744033606	NVA172	RTK	Enabled	1.33	0.044	0.055	16	120
V39	PRS336744033606	NVA172	RTK	Enabled	1.35	0.044	0.055	15	120
V145	PRS336744033606	NVA173	RTK	Enabled	1.83	0.055	0.079	11	120
V146	PRS336744033606	NVA173	RTK	Enabled	1.8	0.045	0.065	12	120
V124	PRS336744033606	NVA174	RTK	Enabled	1.34	0.049	0.059	16	120
V125	PRS336744033606	NVA174	RTK	Enabled	1.33	0.065	0.078	16	120
V126	PRS336744033606	NVA174	RTK	Enabled	1.47	0.05	0.062	15	120
V71	PRS336744033606	NVA175	RTK	Enabled	1.47	0.028	0.043	15	120



V72	PRS336744033606	NVA175	RTK	Enabled	1.57	0.027	0.042	14	120
V251	PRS336744033606	NVA176	RTK	Enabled	1.29	0.045	0.048	17	120
V252	PRS336744033606	NVA176	RTK	Enabled	1.28	0.05	0.054	16	75
V253	PRS336744033606	NVA176	RTK	Enabled	1.3	0.044	0.048	16	120
V84	PRS336744033606	NVA177	RTK	Disabled	1.94	0.045	0.074	12	15
V85	PRS336744033606	NVA177	RTK	Enabled	1.98	0.031	0.051	12	120
V86	PRS336744033606	NVA177	RTK	Enabled	2.01	0.036	0.062	12	120
V223	PRS336744033606	NVA178	RTK	Enabled	3.12	0.043	0.072	13	120
V224	PRS336744033606	NVA178	RTK	Enabled	2.19	0.052	0.087	13	120
V225	PRS336744033606	NVA178	RTK	Enabled	2.16	0.043	0.072	12	120
V226	PRS336744033606	NVA178	RTK	Enabled	2.15	0.039	0.065	13	120
V132	PRS336744033606	NVA179	RTK	Enabled	1.39	0.044	0.065	15	120
V133	PRS336744033606	NVA179	RTK	Enabled	1.71	0.044	0.065	15	120
V134	PRS336744033606	NVA179	RTK	Enabled	2.03	0.045	0.065	15	120
V233	PRS336744033606	NVA180	RTK	Enabled	1.32	0.051	0.059	16	121
V234	PRS336744033606	NVA180	RTK	Enabled	1.41	0.051	0.06	16	120
V235	PRS336744033606	NVA180	RTK	Enabled	1.72	0.052	0.062	15	120
V101	PRS19733588799	NVA181	RTK	Enabled	1.5	0.069	0.078	14	120
V102	PRS19733588799	NVA181	RTK	Enabled	1.31	0.061	0.066	16	120
V305	PRS336744033606	NVA182	RTK	Enabled	1.61	0.05	0.068	14	120
V306	PRS336744033606	NVA182	RTK	Enabled	1.35	0.05	0.068	14	120
V56	PRS336744033606	NVA183	RTK	Enabled	1.25	0.045	0.047	16	120
V57	PRS336744033606	NVA183	RTK	Enabled	1.52	0.033	0.036	15	120
V280	PRS336744033606	NVA184	RTK	Enabled	1.57	0.051	0.064	14	120
V281	PRS336744033606	NVA184	RTK	Enabled	1.56	0.051	0.066	14	120
V282	PRS336744033606	NVA184	RTK	Enabled	1.86	0.057	0.075	13	120
V289	PRS336744033606	NVA185	RTK	Enabled	1.9	0.052	0.086	12	120
V290	PRS336744033606	NVA185	RTK	Enabled	1.52	0.05	0.074	14	120
V338	PRS336744033606	NVA186	RTK	Enabled	1.89	0.052	0.067	13	120
V339	PRS336744033606	NVA186	RTK	Enabled	2.05	0.062	0.08	13	120
V340	PRS336744033606	NVA186	RTK	Enabled	1.98	0.065	0.084	13	120



V358	PRS815686591658	NVA187	RTK	Enabled	1.52	0.056	0.071	14	120
V359	PRS815686591658	NVA187	RTK	Enabled	1.59	0.054	0.066	14	120
V24	PRS336744033606	NVA188	RTK	Enabled	1.23	0.045	0.052	15	120
V25	PRS336744033606	NVA188	RTK	Enabled	1.22	0.058	0.068	16	120
V26	PRS336744033606	NVA188	RTK	Enabled	1.19	0.054	0.063	16	120
V384	PRS815686591658	NVA189	RTK	Enabled	2.3	0.049	0.064	13	120
V385	PRS815686591658	NVA189	RTK	Enabled	1.48	0.071	0.089	13	89
V386	PRS815686591658	NVA189	RTK	Enabled	1.47	0.051	0.064	13	120
V387	PRS815686591658	NVA189	RTK	Enabled	1.49	0.07	0.084	13	72
V388	PRS815686591658	NVA189	RTK	Enabled	1.62	0.052	0.062	14	120
V389	PRS815686591658	NVA189	RTK	Enabled	1.41	0.052	0.06	15	120
V390	PRS815686591658	NVA189	RTK	Enabled	1.39	0.052	0.059	15	120
V391	PRS815686591658	NVA189	RTK	Enabled	1.39	0.052	0.058	15	120
V197	PRS336744033606	NVA190	RTK	Enabled	2.14	0.032	0.047	13	120
V198	PRS336744033606	NVA190	RTK	Enabled	1.57	0.037	0.055	13	120
V113	PRS19733588799	NVA191	RTK	Enabled	1.47	0.046	0.075	16	120
V114	PRS19733588799	NVA191	RTK	Enabled	1.48	0.046	0.073	16	120
V296	PRS336744033606	NVA192	RTK	Enabled	1.28	0.051	0.063	16	120
V297	PRS336744033606	NVA192	RTK	Enabled	1.82	0.036	0.046	15	120
V283	PRS336744033606	VVA93	RTK	Enabled	1.87	0.051	0.08	12	120
V285	PRS336744033606	VVA93	RTK	Enabled	1.66	0.041	0.066	14	120
V286	PRS336744033606	VVA93	RTK	Enabled	1.44	0.074	0.112	15	120
V415	PRS336744033606	VVA93	RTK	Enabled	1.47	0.084	0.103	15	67
V417	PRS336744033606	VVA93	RTK	Enabled	1.6	0.076	0.092	14	120
V269	PRS336744033606	VVA94	RTK	Enabled	2.24	0.062	0.08	13	78
V270	PRS336744033606	VVA94	RTK	Enabled	2.23	0.07	0.09	12	93
V271	PRS336744033606	VVA94	RTK	Enabled	2.05	0.073	0.097	13	97
V302	PRS336744033606	VVA95	RTK	Enabled	2.22	0.085	0.109	12	81
V303	PRS336744033606	VVA95	RTK	Enabled	1.77	0.092	0.107	13	120
V304	PRS336744033606	VVA95	RTK	Enabled	2.23	0.06	0.072	13	120
V310	PRS336744033606	VVA96	RTK	Enabled	1.58	0.055	0.089	14	120



V312	PRS336744033606	VVA96	RTK	Enabled	1.58	0.06	0.099	14	120
V404	PRS336744033606	VVA96	RTK	Enabled	2.07	0.063	0.116	12	120
V341	PRS336744033606	VVA97	RTK	Enabled	1.88	0.063	0.075	13	107
V342	PRS336744033606	VVA97	RTK	Enabled	1.88	0.078	0.097	16	106
V344	PRS336744033606	VVA97	RTK	Enabled	1.4	0.052	0.069	14	111
V345	PRS336744033606	VVA97	RTK	Enabled	1.33	0.069	0.089	16	102
V352	PRS815686591658	VVA98	RTK	Enabled	1.87	0.062	0.098	13	120
V353	PRS815686591658	VVA98	RTK	Enabled	2.33	0.064	0.102	13	120
V381	PRS815686591658	VVA99	RTK	Enabled	1.89	0.074	0.112	14	120
V382	PRS815686591658	VVA99	RTK	Enabled	2.13	0.063	0.09	12	57
V63	PRS336744033606	VVA100	RTK	Enabled	2.43	0.082	0.116	13	120
V421	PRS336744033606	VVA100	RTK	Enabled	1.77	0.075	0.112	14	120
V422	PRS336744033606	VVA100	RTK	Enabled	1.79	0.071	0.113	13	96
V423	PRS336744033606	VVA100	RTK	Enabled	2.06	0.061	0.093	11	34
V424	PRS336744033606	VVA100	RTK	Enabled	1.84	0.079	0.114	14	120
V69	PRS336744033606	VVA101	RTK	Enabled	1.6	0.048	0.071	14	120
V70	PRS336744033606	VVA101	RTK	Enabled	1.6	0.066	0.097	15	120
V298	PRS336744033606	VVA102	RTK	Enabled	1.73	0.059	0.071	15	120
V299	PRS336744033606	VVA102	RTK	Enabled	1.35	0.052	0.061	15	120
V236	PRS336744033606	VVA103	RTK	Enabled	1.83	0.041	0.067	15	120
V237	PRS336744033606	VVA103	RTK	Enabled	2.51	0.046	0.078	15	120
V363	PRS336744033606	VVA104	RTK	Enabled	1.49	0.079	0.084	15	120
V364	PRS336744033606	VVA104	RTK	Enabled	1.81	0.078	0.085	13	120
V76	PRS336744033606	VVA105	RTK	Enabled	1.68	0.1	0.12	13	120
V77	PRS336744033606	VVA105	RTK	Enabled	1.66	0.06	0.068	14	120
V202	PRS336744033606	VVA106	RTK	Enabled	1.54	0.036	0.049	12	91
V203	PRS336744033606	VVA106	RTK	Enabled	1.66	0.033	0.044	13	120
V204	PRS336744033606	VVA107	RTK	Enabled	1.95	0.088	0.083	14	120
V205	PRS336744033606	VVA107	RTK	Enabled	1.64	0.066	0.072	14	120
V89	PRS336744033606	VVA108	RTK	Enabled	1.86	0.039	0.077	13	120
V90	PRS336744033606	VVA108	RTK	Enabled	2.17	0.05	0.103	12	101



V175	PRS336744033606	VVA109	RTK	Enabled	1.49	0.062	0.091	16	120
V176	PRS336744033606	VVA109	RTK	Enabled	1.49	0.031	0.044	16	120
V177	PRS336744033606	VVA109	RTK	Enabled	1.91	0.036	0.052	15	120
V178	PRS336744033606	VVA109	RTK	Enabled	2.37	0.034	0.046	17	120
V227	PRS336744033606	VVA110	RTK	Enabled	2.03	0.048	0.074	13	120
V228	PRS336744033606	VVA110	RTK	Enabled	2.25	0.073	0.1	13	120
V229	PRS336744033606	VVA110	RTK	Enabled	1.7	0.059	0.077	13	120
V195	PRS336744033606	VVA111	RTK	Enabled	1.95	0.041	0.06	12	120
V196	PRS336744033606	VVA111	RTK	Enabled	1.71	0.059	0.083	13	120
V322	PRS336744033606	VVA112	RTK	Enabled	2.17	0.07	0.099	11	112
V324	PRS336744033606	VVA112	RTK	Enabled	2	0.058	0.092	12	99
V325	PRS336744033606	VVA112	RTK	Enabled	1.94	0.052	0.088	12	88
V411	PRS336744033606	VVA112	RTK	Enabled	1.7	0.055	0.067	12	120
V413	PRS336744033606	VVA112	RTK	Enabled	1.86	0.061	0.08	13	120
V414	PRS336744033606	VVA112	RTK	Enabled	1.66	0.048	0.062	13	120
V185	PRS336744033606	VVA113	RTK	Enabled	2.08	0.055	0.072	13	108
V186	PRS336744033606	VVA113	RTK	Enabled	2.04	0.068	0.087	12	120
V187	PRS336744033606	VVA113	RTK	Enabled	1.67	0.076	0.092	13	44
V188	PRS336744033606	VVA113	RTK	Enabled	1.75	0.1	0.117	12	85
V189	PRS336744033606	VVA113	RTK	Enabled	1.89	0.06	0.075	14	120
V190	PRS336744033606	VVA113	RTK	Enabled	2	0.047	0.059	11	113
V162	PRS336744033606	VVA114	RTK	Enabled	1.67	0.038	0.058	14	120
V163	PRS336744033606	VVA114	RTK	Enabled	1.69	0.045	0.071	14	52
V164	PRS336744033606	VVA114	RTK	Enabled	1.72	0.039	0.063	14	120
V165	PRS336744033606	VVA114	RTK	Enabled	2.29	0.049	0.082	14	120
V166	PRS336744033606	VVA114	RTK	Enabled	1.74	0.043	0.075	14	60
V44	PRS336744033606	VVA115	RTK	Enabled	2.06	0.088	0.099	12	35
V45	PRS336744033606	VVA115	RTK	Enabled	1.98	0.054	0.064	13	120
V142	PRS336744033606	VVA116	RTK	Enabled	1.75	0.084	0.099	13	99
V143	PRS336744033606	VVA116	RTK	Enabled	1.7	0.062	0.076	12	120
V144	PRS336744033606	VVA116	RTK	Enabled	1.69	0.045	0.056	12	120



V97	PRS336744033606	VVA117	RTK	Enabled	1.99	0.057	0.09	13	82
V98	PRS336744033606	VVA117	RTK	Enabled	1.96	0.068	0.104	13	120
V129	PRS336744033606	VVA118	RTK	Enabled	1.66	0.069	0.114	14	78
V130	PRS336744033606	VVA118	RTK	Enabled	1.67	0.044	0.068	13	120
V131	PRS336744033606	VVA118	RTK	Enabled	1.66	0.053	0.082	13	120
V105	PRS19733588799	VVA119	RTK	Enabled	1.86	0.056	0.08	12	120
V106	PRS19733588799	VVA119	RTK	Enabled	2.09	0.083	0.138	12	120
V3	PRS336744033606	VVA120	RTK	Enabled	1.73	0.051	0.067	13	120
V4	PRS336744033606	VVA120	RTK	Enabled	2.23	0.052	0.073	12	120
V5	PRS336744033606	VVA120	RTK	Enabled	2.18	0.056	0.085	13	64
V14	PRS336744033606	VVA121	RTK	Enabled	1.46	0.092	0.127	15	59
V15	PRS336744033606	VVA121	RTK	Enabled	2.54	0.064	0.085	13	120
V157	PRS336744033606	VVA122	RTK	Enabled	3.07	0.072	0.115	11	78
V158	PRS336744033606	VVA122	RTK	Enabled	2.74	0.079	0.119	10	120
V159	PRS336744033606	VVA122	RTK	Enabled	2.56	0.042	0.06	10	120
V119	PRS336744033606	VVA123	RTK	Enabled	2.09	0.056	0.069	12	82
V120	PRS336744033606	VVA123	RTK	Enabled	1.92	0.078	0.102	13	120
V121	PRS336744033606	VVA123	RTK	Enabled	2.34	0.062	0.081	13	120
V31	PRS336744033606	VVA124	RTK	Enabled	1.4	0.04	0.061	14	120
V33	PRS336744033606	VVA124	RTK	Enabled	1.96	0.055	0.091	12	59
V22	PRS336744033606	VVA125	RTK	Enabled	1.51	0.056	0.071	14	120
V23	PRS336744033606	VVA125	RTK	Enabled	1.71	0.046	0.056	15	120
V6	PRS336744033606	VVA126	RTK	Enabled	2.27	0.042	0.086	13	120
V7	PRS336744033606	VVA126	RTK	Enabled	2.14	0.043	0.089	14	120
V248	PRS336744033606	VVA127	RTK	Enabled	1.51	0.07	0.079	13	72
V249	PRS336744033606	VVA127	RTK	Enabled	1.53	0.069	0.075	12	106
V250	PRS336744033606	VVA127	RTK	Enabled	1.38	0.06	0.061	13	82
V315	PRS336744033606	VVA128	RTK	Enabled	2.32	0.046	0.061	11	120
V316	PRS336744033606	VVA128	RTK	Enabled	1.79	0.05	0.062	11	120
V317	PRS336744033606	VVA128	RTK	Enabled	2.22	0.055	0.065	12	120
V328	PRS336744033606	VVA129	RTK	Enabled	2.73	0.051	0.11	13	120



V329	PRS336744033606	VVA129	RTK	Enabled	2.15	0.056	0.11	12	116
V331	PRS336744033606	VVA129	RTK	Enabled	2.2	0.056	0.095	14	120
V370	PRS336744033606	VVA130	RTK	Enabled	1.43	0.062	0.095	15	120
V371	PRS336744033606	VVA130	RTK	Enabled	1.41	0.048	0.072	14	120
V372	PRS336744033606	VVA130	RTK	Enabled	1.52	0.047	0.071	15	120
V373	PRS336744033606	VVA130	RTK	Enabled	1.38	0.07	0.108	15	19
V392	PRS815686591658	VVA131	RTK	Enabled	2.06	0.081	0.087	11	63
V393	PRS815686591658	VVA131	RTK	Enabled	1.55	0.064	0.07	14	120
V293	PRS336744033606	VVA132	RTK	Enabled	1.46	0.062	0.066	14	85
V294	PRS336744033606	VVA132	RTK	Enabled	1.49	0.058	0.063	15	120
V295	PRS336744033606	VVA132	RTK	Enabled	1.5	0.091	0.098	14	110
V276	PRS336744033606	VVA133	RTK	Enabled	1.77	0.089	0.109	13	112
V277	PRS336744033606	VVA133	RTK	Enabled	2.2	0.072	0.091	15	120
V278	PRS336744033606	VVA133	RTK	Enabled	1.79	0.053	0.068	13	120
V279	PRS336744033606	VVA133	RTK	Enabled	2.23	0.062	0.08	12	120
V54	PRS336744033606	VVA134	RTK	Enabled	1.36	0.033	0.034	15	120
V55	PRS336744033606	VVA134	RTK	Enabled	1.39	0.059	0.061	15	120
V216	PRS336744033606	VVA135	RTK	Enabled	1.5	0.034	0.046	15	120
V217	PRS336744033606	VVA135	RTK	Enabled	1.69	0.042	0.056	14	120
V218	PRS336744033606	VVA135	RTK	Enabled	1.45	0.041	0.055	14	120
V73	PRS336744033606	VVA136	RTK	Enabled	1.56	0.071	0.101	13	28
V74	PRS336744033606	VVA136	RTK	Enabled	2.15	0.041	0.066	13	120
V36	PRS336744033606	VVA137	RTK	Enabled	1.55	0.066	0.09	14	120
V37	PRS336744033606	VVA137	RTK	Enabled	1.65	0.051	0.069	14	120
V48	PRS336744033606	VVA138	RTK	Enabled	1.36	0.068	0.077	16	120
V49	PRS336744033606	VVA138	RTK	Enabled	1.43	0.034	0.038	17	120
V259	PRS336744033606	VVA139	RTK	Enabled	2.44	0.039	0.087	14	120
V406	PRS336744033606	VVA139	RTK	Enabled	1.57	0.056	0.074	14	120
V407	PRS336744033606	VVA139	RTK	Enabled	1.52	0.045	0.055	14	120
V408	PRS336744033606	VVA139	RTK	Enabled	1.48	0.063	0.081	14	120
V409	PRS336744033606	VVA139	RTK	Enabled	1.42	0.067	0.088	15	120



This page is left blank intentionally.

High Resolution Photos

GCP 01 North



GCP 01 West



GCP 01



GCP 02 North



GCP 02 East



GCP 02





GCP 03 North



GCP 03 West



GCP 03



GCP 04 North



GCP 04 West



GCP 04





GCP 05 North



GCP 05 West



GCP 05



GCP 06 North



GCP 06 West



GCP 06





GCP 07 North



GCP 07 South



GCP 07



GCP 08 North



GCP 08 East



GCP 08





GCP 09 North



GCP 09 West



GCP 09



GCP 10 North



GCP 10 East



GCP 10





GCP 11 North



GCP 11 East



GCP 11



GCP 12 North



GCP 12 West



GCP 12





GCP 13 North



GCP 13 West



GCP 13



GCP 14 North



GCP 14 West



GCP 14





SAM, LLC
1224 Fern Ridge Parkway, Suite 110, St. Louis, MO 63141
Ofc 314.576.9878 Fax 314.576.9922
info@sam.biz www.sam.biz

GCP 15 North



GCP 15 West



GCP 15



GCP 16 North



GCP 16 West



GCP 16





SAM, LLC
1224 Fern Ridge Parkway, Suite 110, St. Louis, MO 63141
Ofc 314.576.9878 Fax 314.576.9922
info@sam.biz www.sam.biz

GCP 17 North



GCP 17 West



GCP 17



GCP 18 North



GCP 18 West



GCP 18





SAM, LLC
1224 Fern Ridge Parkway, Suite 110, St. Louis, MO 63141
Ofc 314.576.9878 Fax 314.576.9922
info@sam.biz www.sam.biz

GCP 19 North



GCP 19 West



GCP 19



GCP 20 North



GCP 20 West



GCP 20





SAM, LLC
1224 Fern Ridge Parkway, Suite 110, St. Louis, MO 63141
Ofc 314.576.9878 Fax 314.576.9922
info@sam.biz www.sam.biz

GCP 21 North



GCP 21 West



GCP 21



GCP 22 North



GCP 22 West



GCP 22





SAM, LLC
1224 Fern Ridge Parkway, Suite 110, St. Louis, MO 63141
Ofc 314.576.9878 Fax 314.576.9922
info@sam.biz www.sam.biz

GCP 23 East



GCP 23 West



GCP 23



GCP 24 North



GCP 24 West



GCP 24





SAM, LLC
1224 Fern Ridge Parkway, Suite 110, St. Louis, MO 63141
Ofc 314.576.9878 Fax 314.576.9922
info@sam.biz www.sam.biz

GCP 25 North



GCP 25 West



GCP 25



GCP 26 North



GCP 26 East



GCP 26 South





SAM, LLC
1224 Fern Ridge Parkway, Suite 110, St. Louis, MO 63141
Ofc 314.576.9878 Fax 314.576.9922
info@sam.biz www.sam.biz

GCP 26



GCP 27 North



GCP 27 East



GCP 27 West



GCP 27 South



GCP 27





SAM, LLC
1224 Fern Ridge Parkway, Suite 110, St. Louis, MO 63141
Ofc 314.576.9878 Fax 314.576.9922
info@sam.biz www.sam.biz

GCP 28 East



GCP 28 South



GCP 28



GCP 29 North



GCP 29 South



GCP 29





SAM, LLC
1224 Fern Ridge Parkway, Suite 110, St. Louis, MO 63141
Ofc 314.576.9878 Fax 314.576.9922
info@sam.biz www.sam.biz

GCP 30 North



GCP 30 West



GCP 30



GCP 31 North



GCP 31



GCP 31 West





SAM, LLC
1224 Fern Ridge Parkway, Suite 110, St. Louis, MO 63141
Ofc 314.576.9878 Fax 314.576.9922
info@sam.biz www.sam.biz

GCP 32 North



GCP 32 West



GCP 32



GCP 33 North



GCP 33 West



GCP 33





SAM, LLC
1224 Fern Ridge Parkway, Suite 110, St. Louis, MO 63141
Ofc 314.576.9878 Fax 314.576.9922
info@sam.biz www.sam.biz

GCP 34 South



GCP 34 West



GCP 34



GCP 35 North



GCP 35 East



GCP 35





SAM, LLC
1224 Fern Ridge Parkway, Suite 110, St. Louis, MO 63141
Ofc 314.576.9878 Fax 314.576.9922
info@sam.biz www.sam.biz

GCP 36 North



GCP 36 East



GCP 36



GCP 37 North



GCP 37 East



GCP 37





SAM, LLC
1224 Fern Ridge Parkway, Suite 110, St. Louis, MO 63141
Ofc 314.576.9878 Fax 314.576.9922
info@sam.biz www.sam.biz

GCP 38 South



GCP 38 West



GCP 38



GCP 39 North



GCP 39 West



GCP 39





SAM, LLC
1224 Fern Ridge Parkway, Suite 110, St. Louis, MO 63141
Ofc 314.576.9878 Fax 314.576.9922
info@sam.biz www.sam.biz

GCP 40 North



GCP 40 West



GCP 40



GCP 41 North



GCP 41 West



GCP 41





SAM, LLC
1224 Fern Ridge Parkway, Suite 110, St. Louis, MO 63141
Ofc 314.576.9878 Fax 314.576.9922
info@sam.biz www.sam.biz

GCP 42 North



GCP 42 West



GCP 42



GCP 43 North



GCP 43 West



GCP 43





SAM, LLC
1224 Fern Ridge Parkway, Suite 110, St. Louis, MO 63141
Ofc 314.576.9878 Fax 314.576.9922
info@sam.biz www.sam.biz

GCP 44 North



GCP 44 West



GCP 44



GCP 45 North



GCP 45 West



GCP 45





SAM, LLC
1224 Fern Ridge Parkway, Suite 110, St. Louis, MO 63141
Ofc 314.576.9878 Fax 314.576.9922
info@sam.biz www.sam.biz

GCP 46 North



GCP 46 West



GCP 46



GCP 47 North



GCP 47 South



GCP 47





SAM, LLC
1224 Fern Ridge Parkway, Suite 110, St. Louis, MO 63141
Ofc 314.576.9878 Fax 314.576.9922
info@sam.biz www.sam.biz

GCP 48 North



GCP 48 West



GCP 48



GCP 49 North



GCP 49 West



GCP 49





SAM, LLC
1224 Fern Ridge Parkway, Suite 110, St. Louis, MO 63141
Ofc 314.576.9878 Fax 314.576.9922
info@sam.biz www.sam.biz

GCP 50 North



GCP 50 East



GCP 50



GCP 51 North



GCP 51 West



GCP 51





SAM, LLC
1224 Fern Ridge Parkway, Suite 110, St. Louis, MO 63141
Ofc 314.576.9878 Fax 314.576.9922
info@sam.biz www.sam.biz

GCP 52 North



GCP 52 West



GCP 52



GCP 53 North



GCP 53 South



GCP 53



GCP 54 North



GCP 54 East



GCP 54



GCP 55 North



GCP 55 West



GCP 55



GCP 56 North



GCP 56 West



GCP 56



GCP 57 North



GCP 57 East



GCP 57



GCP 58 North



GCP 58 South



GCP 58



GCP 59 North



GCP 59 West



GCP 59



GCP 60 North



GCP 60 West



GCP 60



GCP 61 North



GCP 61 West



GCP 61



GCP 62 North



GCP 62 South



GCP 62



GCP 63 North



GCP 63 South



GCP 63



GCP 64 North



GCP 64 West



GCP 64



GCP 65 North



GCP 65 West



GCP 65



GCP 66 North



GCP 66 West



GCP 66



GCP 67 North



GCP 67 West



GCP 67



GCP 68 North



GCP 68 West



GCP 68



GCP 69 North



GCP 69 West



GCP 69



GCP 70 North



GCP 70 West



GCP 70



GCP 71 North



GCP 71 West



GCP 71



GCP 72 North



GCP 72 West



GCP 72



GCP 73 North



GCP 73 West



GCP 73





GCP 76 North



GCP 76 East



GCP 76



GCP 77 North



GCP 77 South



GCP 77



GCP 78 East



GCP 78 South



GCP 78



GCP 79 North



GCP 79 East



GCP 79



GCP 80 North



GCP 80 West



GCP 80



GCP 81 North



GCP 81 South



GCP 81



GCP 82 North



GCP 82 South



GCP 82



GCP 83 East



GCP 83 South



GCP 83



GCP 84 North



GCP 84 East



GCP 84



GCP 85 North



GCP 85 West



GCP 85



GCP 86 North



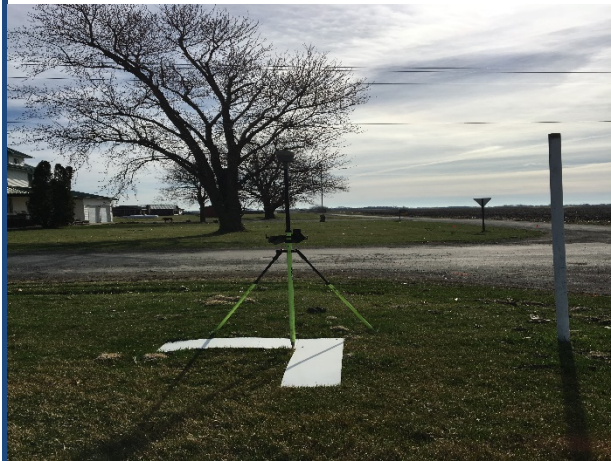
GCP 86 West



GCP 86



GCP 87 East



GCP 87 West



GCP 87



GCP 88 North



GCP 88 West



GCP 88



GCP 89 North



GCP 89 West



GCP 89



GCP 90 North



GCP 90 East



GCP 90



GCP 91 North



GCP 91 West



GCP 91



GCP 92 North



GCP 92 West



GCP 92



GCP 93 North



GCP 93 West



GCP 93



GCP 94 North



GCP 94 West



GCP 94



GCP 95 North



GCP 95 West



GCP 95



GCP 96 North



GCP 96 West



GCP 96



GCP 97 North



GCP 97 West



GCP 97



GCP 98 North



GCP 98 West



GCP 98



GCP 99 North



GCP 99 South



GCP 99



GCP 100 North



GCP 100 East



GCP 100



GCP 101 North



GCP 101 West



GCP 101



GCP 102 North



GCP 102 West



GCP 102



GCP 103 North



GCP 103 West



GCP 103



GCP 104 North



GCP 104 West



GCP 104



GCP 105 North



GCP 105 West



GCP 105



GCP106 North



GCP106 West



GCP106



GCP107 North



GCP107 South



GCP107



GCP108 North



GCP108 North



GCP108 North



GCP109 North



GCP109 East



GCP109



GCP110 North



GCP110 West



GCP110



GCP111 North



GCP111 West



GCP111



NVA 01 North



NVA 01



NVA 01 West



NVA 02 North



NVA 02 South



NVA 02



NVA 03 North



NVA 03 West



NVA 03



NVA 04 North



NVA 04 West



NVA 04



NVA 05 North



NVA 05 West



NVA 05



NVA 06 North



NVA 06 West



NVA 06



NVA 07 North



NVA 07 South



NVA 07



NVA 08 North



NVA 08 West



NVA 08



NVA 09 North



NVA 09 East



NVA 09



NVA 10 North



NVA 10 South



NVA 10



NVA 11 North



NVA 11 West



NVA 11



NVA 12 North



NVA 12 West



NVA 12



NVA 13 North



NVA 13 West



NVA 13



NVA 14 North



NVA 14 West



NVA 14



NVA 15 North



NVA 15 West



NVA 15



NVA 16 North



NVA 16 West



NVA 16



NVA 17 North



NVA 17 West



NVA 17



NVA 18 North



NVA 18 West



NVA 18



NVA 19 North



NVA 19 West



NVA 19



NVA 20 North



NVA 20 West



NVA 20



NVA 21 North



NVA 21 West



NVA 21



NVA 22 North



NVA 22 West



NVA 22



NVA 23 East



NVA 23 South



NVA 23



NVA 24 North



NVA 24 West



NVA 24



NVA 25 North



NVA 25 West



NVA 25



NVA 26 North



NVA 26 West



NVA 26



NVA 27 North



NVA 27 East



NVA 27



NVA 28 South



NVA 28 West



NVA 28



NVA 29 North



NVA 29 South



NVA 29



NVA 30 South



NVA 30 West



NVA 30



NVA31 North



NVA31 East



NVA31



NVA32 South



NVA32 West



NVA32



NVA33 North



NVA33 South



NVA 33



NVA 34 North



NVA 34 South



NVA 34



NVA 35 North



NVA 35 East



NVA 35



NVA 36 North



NVA 36 East



NVA 36



NVA 37 South



NVA 37 West



NVA 37



NVA 38 South



NVA 38 West



NVA 38



NVA 39 North



NVA 39 South



NVA 39



NVA 40 East



NVA 40 South



NVA 40



NVA 41 North



NVA 41 West



NVA 41



NVA 42 North



NVA 42 West



NVA 42



NVA 43 North



NVA 43 West



NVA 43



NVA 44 North



NVA 44 west



NVA 44



NVA 45 North



NVA 45 West



NVA 45



NVA 46 North



NVA 46 West



NVA 46



NVA 47 North



NVA 47 West



NVA 47



NVA 48 North



NVA 48 West



NVA 48



NVA 49 North



NVA 49 East



NVA 49



NVA 50 North



NVA 50 West



NVA 50



NVA 51 North



NVA 51 East



NVA 51



NVA 52 North



NVA 52 West



NVA 52



NVA 53 North



NVA 53 East



NVA 53



NVA 54 North



NVA 54 South



NVA 54



NVA 55 North



NVA 55 South



NVA 55



NVA 56 North



NVA 56 South



NVA 56



NVA 57 North



NVA 57 South



NVA 57



NVA 58 North



NVA 58 West



NVA 58



NVA 59 North



NVA 59 South



NVA 59



NVA 60 North



NVA 60 West



NVA 60



NVA 61 North



NVA 61 West



NVA 61



NVA 62 North



NVA 62 West



NVA 62



NVA 63 North



NVA 63 West



NVA 63



NVA 64 North



NVA 64 West



NVA 64



NVA 65 North



NVA 65 West



NVA 65



NVA 66 North



NVA 66 South



NVA 66



NVA 67 North



NVA 67 West



NVA 67



NVA 68 North



NVA 68 West



NVA 68



NVA 69 North



NVA 69 West



NVA 69



NVA 70 North



NVA 70 West



NVA 70



NVA 71 North



NVA 71 West



NVA 71



NVA 72 North



NVA 72 West



NVA 72



NVA 73 North



NVA 73 West



NVA 73



NVA 74 North



NVA 74 West



NVA 74



NVA 75 North



NVA 75 East



NVA 75



NVA 76 North



NVA 76 West



NVA 76



NVA 77 North



NVA 77 West



NVA 77



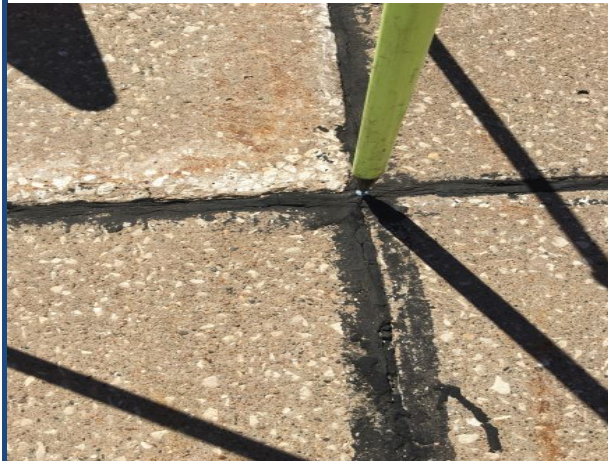
NVA 78 North



NVA 78 South



NVA 78



NVA 78 North



NVA 78 South



NVA 78



NVA 79 North



NVA 79 West



NVA 79



NVA 80 North



NVA 80 West



NVA 80



NVA 81 North



NVA 81 South



NVA 81



NVA 82 North



NVA 82 East



NVA 82



NVA 83 North



NVA 83 West



NVA 83



NVA 84 North



NVA 84 East



NVA 84



NVA 85 North



NVA 85 South



NVA 85



NVA 86 East



NVA 86 South



NVA 86



NVA 87 North



NVA 87 East



NVA 87



NVA 88 North



NVA 88 South



NVA 88



NVA 89 East



NVA 89 West



NVA 89



NVA 90 North



NVA 90 West



NVA 90



NVA 91 East



NVA 91 West



NVA 91



NVA 92 East



NVA 92 South



NVA 92



NVA 93 North



NVA 93 East



NVA 93



NVA 94 North



NVA 94 West



NVA 94



NVA 95 North



NVA 95 South



NVA 95



NVA 96 North



NVA 96 East



NVA 96 West



NVA 96



NVA 97 North



NVA 97 East



NVA 97 South



NVA 97



NVA 98 North



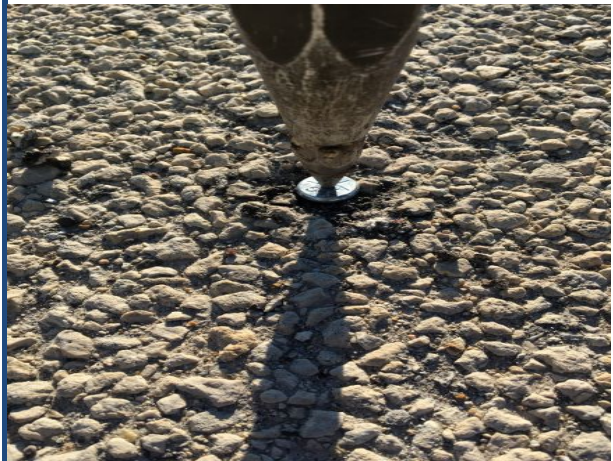
NVA 98 East



NVA 98 North



NVA 98



NVA 99 North



NVA 99 West



NVA 99



NVA 100 North



NVA 100 West



NVA 100



NVA 101 North



NVA 101 West



NVA 101



NVA 102 North



NVA 102 West



NVA 102



NVA 103 North



NVA 103 South



NVA 103



NVA 104 North



NVA 104 West



NVA 104



NVA 105 North



NVA 105 West



NVA 105



NVA 106 North



NVA 106 West



NVA 106



NVA 107 North



NVA 107 West



NVA 107



NVA 108 North



NVA 108 West



NVA 108



NVA 109 North



NVA 109 West



NVA 109



NVA 110 North



NVA 110 West



NVA 110



NVA 111 North



NVA 111 South



NVA 111



NVA 112 North



NVA 112 West



NVA 112



NVA 113 North



NVA 113 West



NVA 113



NVA 114 North



NVA 114 East



NVA 114



NVA 115 South



NVA 115 West



NVA 115



NVA 116 North



NVA 116 West



NVA 116



NVA 117 North



NVA 117 West



NVA 117



NVA 118 North



NVA 118 West



NVA 118



NVA 119 North



NVA 119 West



NVA 119



NVA 120 North



NVA 120 East



NVA 120



NVA 121 North



NVA 121 East



NVA 121



NVA 122 North



NVA 122 East



NVA 122 West



NVA 122 South



NVA 122



NVA 124 West



NVA 124 North



NVA 124 West



NVA 124



NVA 125 North



NVA 125 West



NVA 125



NVA 126 North



NVA 126 West



NVA 126



NVA 127 South



NVA 127 West



NVA 127



NVA 128 North



NVA 128 East



NVA 128



NVA 129 East



NVA 129 West



NVA 129



NVA 130 North



NVA 130 West



NVA 130



NVA 131 North



NVA 131 East



NVA 131



NVA 132 South



NVA 132 East



NVA 132



NVA 133 North



NVA 133



NVA 133



NVA 134 North



NVA 134 West



NVA 134



NVA 135 East



NVA 135 South



NVA 135



NVA 136 North



NVA 136 West



NVA 136



NVA 137 North



NVA 137 West



NVA 137



NVA 138 South



NVA 138 West



NVA 138



NVA 139 North



NVA 139 West



NVA 139



NVA 140 North



NVA 140 West



NVA 140



NVA 141 North



NVA 141 West



NVA 141



NVA 142 North



NVA 142 West



NVA 142



NVA 143 North



NVA 143 West



NVA 143



NVA 144 North



NVA 144 West



NVA 144



NVA 145 North



NVA 145 West



NVA 145



NVA 146 North



NVA 146 West



NVA 146





NVA 147 North



NVA 147 West



NVA 147



NVA 148 North



NVA 148 West



NVA 148





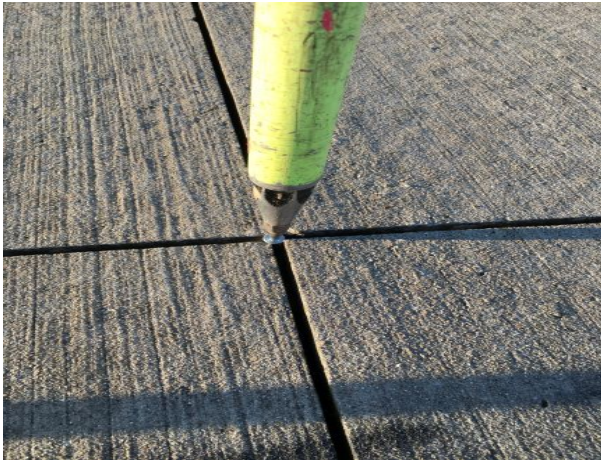
NVA 149 North



NVA 149 South



NVA 149



NVA 150 North



NVA 150 West



NVA 150





NVA 151 North



NVA 151 West



NVA 151



NVA 152 North



NVA 152 West



NVA 152





NVA 153 North



NVA 153 East



NVA 153



NVA 154 North



NVA 154 West



NVA 154





NVA 155 North



NVA 155 West



NVA 155



NVA 156 North



NVA 156 West



NVA 156





NVA 157 North



NVA 157 West



NVA 157



NVA 158 North



NVA 158 East



NVA 158





NVA 159 North



NVA 159 West



NVA 159



NVA 160 North



NVA 160 West



NVA 160





NVA 161 North



NVA 161



NVA 161



NVA 162 North



NVA 162 East



NVA 162





NVA 163 North



NVA 163 West



NVA 163



NVA 164 North



NVA 164 West



NVA 164





NVA 165 North



NVA 165 East



NVA 165



NVA 166 North



NVA 166 West



NVA 166





NVA 167 North



NVA 167 West



NVA 167



NVA 168 North



NVA 168 West



NVA 168





NVA 169 North



NVA 169 East



NVA 169



NVA 170 North



NVA 170 West



NVA 170





NVA 171 North



NVA 171 West



NVA 171



NVA 172 North



NVA 172 West



NVA 172





NVA 173 North



NVA 173 West



NVA 173



NVA 174 North



NVA 174 West



NVA 174





NVA 175 North



NVA 175 West



NVA 175



NVA 176 North



NVA 176 West



NVA 176





NVA 177 North



NVA 177 West



NVA 177



NVA 178 North



NVA 178 West



NVA 178



NVA 179 North



NVA 179 West



NVA 179



NVA 180 North



NVA 180 West



NVA 180



NVA 181 North



NVA 181 West



NVA 181



NVA 182 North



NVA 182 West



NVA 182



NVA 183 North



NVA 183 South



NVA 183



NVA 184 North



NVA 184 West



NVA 184



NVA 185 North



NVA 185 West



NVA 185



NVA 186 North



NVA 186 West



NVA 186



NVA 187 North



NVA 187 West



NVA 187



NVA 188 North



NVA 188 East



NVA 188



NVA 189 North



NVA 189 West



NVA 189



NVA 190 North



NVA 190 West



NVA 190



NVA 191 North



NVA 191 West



NVA 191



NVA192 North



NVA192 West



NVA192



VVA 01 North



VVA 01 East



VVA 01



VVA 02 North



VVA 02 South



VVA 02



VVA 03 North



VVA 03 West



VVA 03



VVA 04 North



VVA 04 West



VVA 04



VVA 05 North



VVA 05 West



VVA 05



VVA 06 North



VVA 06 West



VVA 06



VVA 07 North



VVA 07 West



VVA 07



VVA 08 North



VVA 08 South



VVA 08



VVA 09 North



VVA 09 West



VVA 09



VVA 10 North



VVA 10 West



VVA 10



VVA 11 North



VVA 11 West



VVA 11



VVA 12 North



VVA 12 West



VVA 12



VVA 13 North



VVA 13 West



VVA 13



VVA 14 North



VVA 14 West



VVA 14



VVA 15 North



VVA 15 West



VVA 15



VVA 16 North



VVA 16 South



VVA 16



VVA 17 North



VVA 17 South



VVA 17



VVA 18 North



VVA 18 West



VVA 18



VVA 19 North



VVA 19 West



VVA 19



VVA 20 North



VVA 20 West



VVA 20



VVA 21 North



VVA 21 East



VVA 21



VVA 22 North



VVA 22 West



VVA 22



VVA 23 North



VVA 23 East



VVA 23



VVA 24 North



VVA 24 West



VVA 24



VVA 25 North



VVA 25 West



VVA 25



VVA 26 North



VVA 26 West



VVA 26



VVA 27 North



VVA 27 West



VVA 27



VVA 28 North



VVA 28 West



VVA 28



VVA 29 North



VVA 29 West



VVA 29



VVA 30 North



VVA 30 West



VVA 30



VVA 31 North



VVA 31 West



VVA 31



VVA 32 North



VVA 32 West



VVA 32 \



VVA 33 East



VVA 33 West



VVA 33



VVA 34 North



VVA 34 West



VVA 34



VVA 35 East



VVA 35 South



VVA 35



VVA 36 North



VVA 36 West



VVA 36



VVA 37 North



VVA 37 West



VVA 37



VVA 38 North



VVA 38 West



VVA 38



VVA 39 North



VVA 39 West



VVA 39



VVA 40 North



VVA 40 West



VVA 40



VVA 41 North



VVA 41 East



VVA 41



VVA 42 North



VVA 42 West



VVA 42



VVA 43 North



VVA 43 West



VVA 43



VVA 44 North



VVA 44 West



VVA 44



VVA 45 East



VVA 45 South



VVA 45



VVA 46 North



VVA 46 West



VVA 46



VVA 47 North



VVA 47 West



VVA 48 North



VVA 48 East



VVA 49 North



VVA 49 East



VVA 50 East



VVA 50 South



VVA 50



VVA 51 North



VVA 51 East



VVA 51



VVA 52 South



VVA 52 West



VVA 52



VVA 53 South



VVA 53 West



VVA 53



VVA 54 North



VVA 54 East



VVA 54



VVA 55 North



VVA 55 West



VVA 55



VVA 56 North



VVA 56 East



VVA 56



VVA 57 South



VVA 57 West



VVA 57



VVA 58 East



VVA 58 West



VVA 58



VVA 59 North



VVA 59 West



VVA 59



VVA 60 North



VVA 60 East



VVA 60



VVA 61 South



VVA 61 West



VVA 61



VVA 62 East



VVA 62 South



VVA 62



VVA 63 North



VVA 63 East



VVA 63



VVA 64 North



VVA 64 East



VVA 64



VVA 65 North



VVA 65 South



VVA 65



VVA 66 North



VVA 66 South



VVA 66



VVA 67 North



VVA 67 East



VVA 67



VVA 68 North



VVA 68 West



VVA 68



VVA 69 North



VVA 69 West



VVA 69



VVA 70 North



VVA 70 West



VVA 70



VVA 71 North



VVA 71 East



VVA 71



VVA 72 East



VVA 72 West



VVA 72



VVA 73 South



VVA 73 West



VVA 73



VVA 74 East



VVA 74 West



VVA 74



VVA 75 North



VVA 75 West



VVA 75



VVA 76 East



VVA 76 South



VVA 76



VVA 77 East



VVA 77 West



VVA 77



VVA 78 South



VVA 78 West



VVA 78



VVA 79 South



VVA 79 West



VVA 79



VVA 80 North



VVA 80 West



VVA 80



VVA 81 North



VVA 81 West



VVA 81



VVA 82 East



VVA 82 West



VVA 82



VVA 83 North



VVA 83 West



VVA 83



VVA 84 North



VVA 84 West



VVA 84



VVA 85 North



VVA 85 West



VVA 85



VVA 86 North



VVA 86 East



VVA 86



VVA 87 East



VVA 87 South



VVA 87



VVA 88 South



VVA 88 West



VVA 88



VVA 89 North



VVA 89 South



VVA 89



VVA 90 North



VVA 90 West



VVA 90



VVA 91 North



VVA 91 West



VVA 91



VVA 92 North



VVA 92 West



VVA 92



VVA 93 North



VVA 93 West



VVA 93



VVA 94 North



VVA 94 West



VVA 94



VVA 95 North



VVA 95 West



VVA 95



VVA 96 North



VVA 96 West



VVA 96



VVA 97 North



VVA 97 West



VVA 97



VVA 98 North



VVA 98 West



VVA 98



VVA 99 North



VVA 99 West



VVA 99



VVA 100 South



VVA 100 West



VVA 100



VVA 101 South



VVA 101 West



VVA 101



VVA 102 North



VVA 102 West



VVA 102



VVA 103 North



VVA 103 West



VVA 103



VVA 104 North



VVA 104 West



VVA 104



VVA 105 North



VVA 105 East



VVA 105



VVA 106 North



VVA 106 West



VVA 107 North



VVA 107 West



VVA 108 East



VVA 108 South



VVA 109 North



VVA 109 West



VVA 109



VVA 110 North



VVA 110 West



VVA 110



VVA 111 North



VVA 111 West



VVA 111



VVA 112 North



VVA 112 West



VVA 112



VVA 113 North



VVA 113 West



VVA 113



VVA 114 North



VVA 114 West



VVA 114



VVA 115 North



VVA 115 East



VVA 115



VVA 116 North



VVA 116



VVA 116



VVA 117 North



VVA 117 South



VVA 117



VVA 118 North



VVA 118 West



VVA 118



VVA 119 North



VVA 119 West



VVA 119



VVA 120 North



VVA 120 West



VVA 120



VVA 121 North



VVA 121 East



VVA 121



VVA 122 North



VVA 122 West



VVA 122



VVA 123 North



VVA 123 West



VVA 123



VVA 124 North



VVA 124 South



VVA 124



VVA 125 North



VVA 125 East



VVA 125



VVA 126 West



VVA 126 South



VVA 126



VVA 127 North



VVA 127 West



VVA 127



VVA 128 North



VVA 128 West



VVA 128



VVA 129 North



VVA 129 West



VVA 129



VVA 130 North



VVA 130 West



VVA 130



VVA 131 North



VVA 131 West



VVA 131



VVA 132 North



VVA 132 West



VVA 132



VVA 133 North



VVA 133 West



VVA 133



VVA 134 North



VVA 134 South



VVA 134



VVA 135 North



VVA 135 West



VVA 135



VVA 136 North



VVA 136 West



VVA 136



VVA 137 North



VVA 137 West



VVA 137



VVA 138 North



VVA 138 South



VVA 138



VVA 139 North



VVA 139 West



VVA 139



VVA 140 North



VVA 140 West



VVA 140

