

# Classified Point Cloud

## Deliverable 1 Summary

✓ General		
Folder:	F:\Classified_LAS	
Total # of Files:	7,998	(All Valid)
Total File Size:	899.3 GB	(965,652,722,178 bytes)

✓ Tile Sizes	
Median Tile Size:	2,000' x 2,000'
Minimum Tile Size:	400' x 320'
Maximum Tile Size:	2,000' x 2,000'
X Range:	1955999.99' to 2259839.99'
Y Range:	992639.99' to 1159764.96'
Elevation Range:	-208.51' to 1918.99'

✓ LAS Version And Point Record Formats	
v1.4, Point Record Format 6	7,998 of 7,998 Tiles

✓ Spatial Reference System		
Horizontal Projection	NAD83(2011) / Illinois West (ftUS)	7,998 of 7,998 Tiles
Horizontal Datum	NAD83 (National Spatial Reference System 2011)	7,998 of 7,998 Tiles
Horizontal Units	US survey foot	7,998 of 7,998 Tiles
Vertical Datum	NAVD88 height (ftUS)	7,998 of 7,998 Tiles
Vertical Units	US survey foot	7,998 of 7,998 Tiles
Storage Method	WKT	7,998 of 7,998 Tiles

✓ GPS Time Type	
Adjusted	7,998 of 7,998 Tiles

✓ File Source ID Equals 0	
Yes	7,998 of 7,998 Tiles

✓ VLR/EVLR Reserved Equals 0	
Yes	31,992 of 31,992 Records

✓ Unnecessary Bytes At End Of File	
No	7,998 of 7,998 Tiles

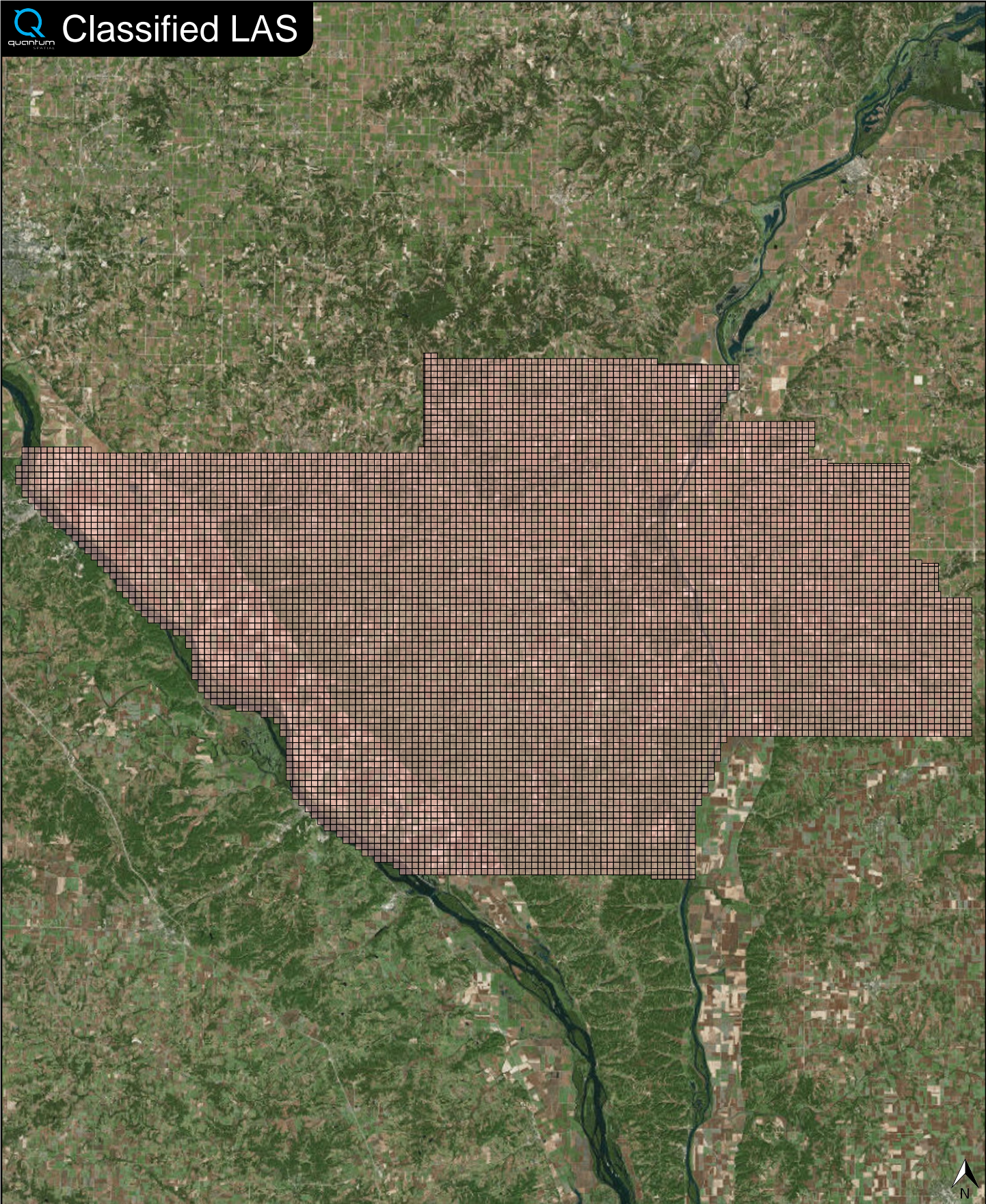
✓ Legacy Point Count Check	
Zero	7,998 of 7,998 Tiles

✓ System Identifier	
Quantum Spatial	7,998 of 7,998 Tiles

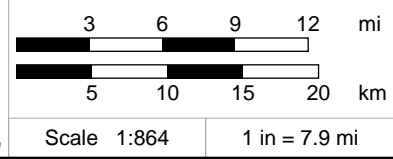
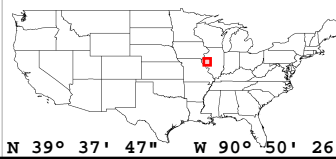
✓ Generating Software	
LiDAR Suite	7,998 of 7,998 Tiles



# Classified LAS



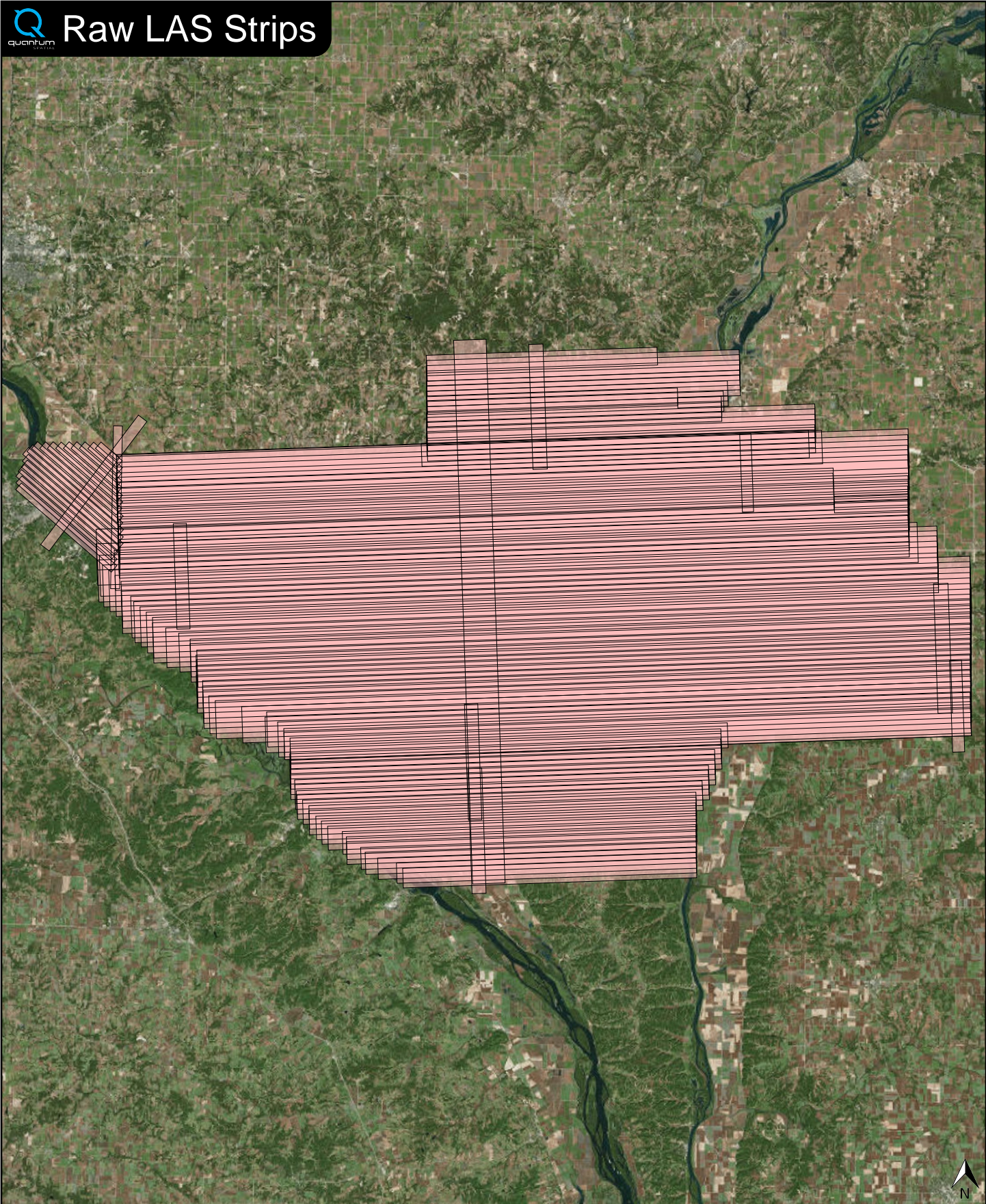
Classified LAS Tiles (7,998)



# Raw LAS Flight Line Strips

## Deliverable 2 Summary

<b>✓ General</b>		
Folder:	F:\Calibrated_FL_Swath	
Total # of Files:	131	(All Valid)
Total File Size:	923.6 GB	(991,675,444,376 bytes)
<b>✓ Raw LAS Strips</b>		
Elevation Range:	-209' to 1924'	
<b>✓ LAS Version And Point Record Formats</b>		
v1.4, Point Record Format 6	131 of 131 Tiles	
<b>✓ Spatial Reference System</b>		
Horizontal Projection	NAD83(2011) / Illinois West (ftUS)	131 of 131 Tiles
Horizontal Datum	NAD83 (National Spatial Reference System 2011)	131 of 131 Tiles
Horizontal Units	US survey foot	131 of 131 Tiles
Vertical Datum	NAVD88 height (ftUS)	131 of 131 Tiles
Vertical Units	US survey foot	131 of 131 Tiles
Storage Method	WKT	131 of 131 Tiles
<b>✓ GPS Time Type</b>		
Adjusted	131 of 131 Strips	
<b>✓ File Source IDs</b>		
Equals Zero:	None	
All Unique:	Yes	
FLs:	100 - 117, 200 - 299, 900 - 909, 2081, 2281, 2291	
<b>✓ VLR/EVLR Reserved Equals 0</b>		
Yes	524 of 524 Records	
<b>✓ Unnecessary Bytes At End Of File</b>		
No	131 of 131 Strips	
<b>✓ Legacy Point Count Check</b>		
Zero	131 of 131 Strips	
<b>✓ System Identifier</b>		
Quantum Spatial	131 of 131 Strips	
<b>✓ Generating Software</b>		
LiDAR Suite	131 of 131 Strips	



FL Strips (131)



N 39° 37' 49" W 90° 50' 37"

3 6 9 12 mi

5 10 15 20 km

Scale 1:864

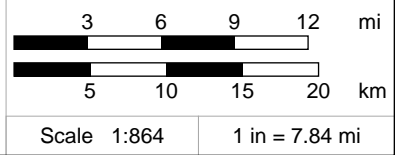
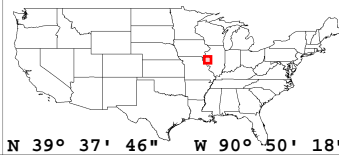
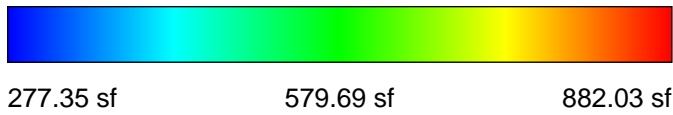
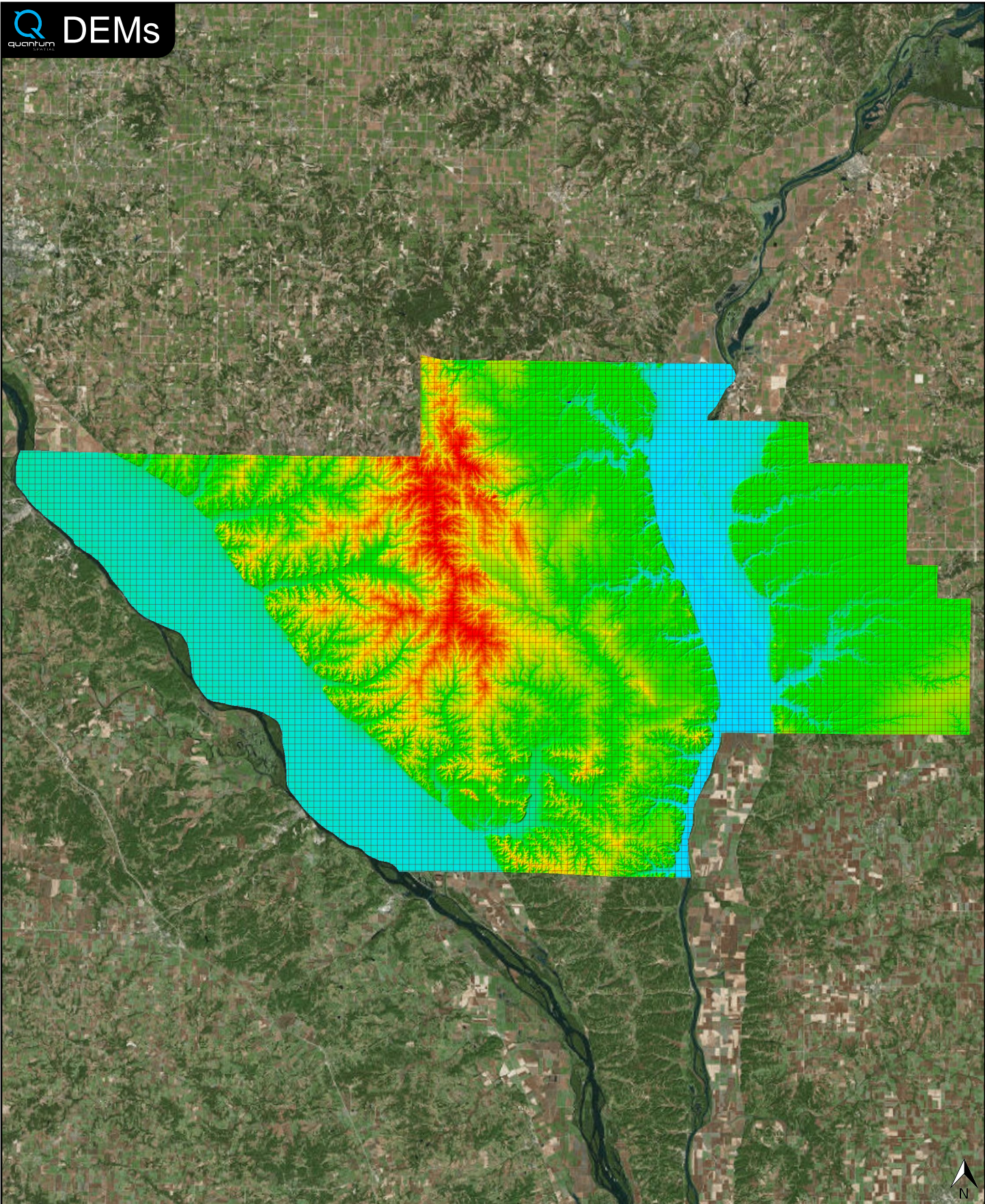
1 in = 7.95 mi

✓ General		
Folder:	F:\ERDAS_IMG_Raster_DEM	
Total # of Files:	7,998	(All Valid)
Total File Size:	30.4 GB	(32,682,252,120 bytes)

✓ Tile Sizes	
Median Tile Size:	2,000' x 2,000'
Minimum Tile Size:	6' x 2'
Maximum Tile Size:	2,000' x 2,000'
X Range:	1957904.00' to 2259190.00'
Y Range:	993732.00' to 1158538.00'
Elevation Range:	272.67' to 883.52'

✓ Spatial Reference System		
Horizontal Projection	NAD_1983_2011_StatePlane_Illinois_West_FIPS_1202_Ft_US	7,998 of 7,998 Tiles
Horizontal Datum	D_NAD_1983_2011	7,998 of 7,998 Tiles
Horizontal Units	Foot_US	7,998 of 7,998 Tiles
Vertical Datum	NAVD88 height (ftUS)	7,998 of 7,998 Tiles
Vertical Units	Foot_US	7,998 of 7,998 Tiles

✓ Raster		
File Type:	IMG	7,998 of 7,998
Bands:	1	7,998 of 7,998
Grid Size (pixels):	1000 x 1000	7,586 of 7,998
	OTHER	412 of 7,998
Pixel Resolution:	2.00000000' x 2.00000000'	7,998 of 7,998
Pixel Type:	32-bit Floating Point	7,998 of 7,998
Compression:	None	7,998 of 7,998
No Data Value:	-32767	7,998 of 7,998



✓ General		
Folder:	F:\Intensity_Images	
Total # of Files:	7,998	(All Valid)
Total File Size:	10.4 GB	(11,146,774,430 bytes)

✓ Tile Sizes	
Median Tile Size:	2,000' x 2,000'
Minimum Tile Size:	6' x 2'
Maximum Tile Size:	2,000' x 2,000'
X Range:	1957904.00' to 2259190.00'
Y Range:	993732.00' to 1158538.00'

✓ Spatial Reference System		
Horizontal Projection	NAD_1983_2011_StatePlane_Illinois_West_FIPS_1202_Ft_US	7,998 of 7,998 Tiles
Horizontal Datum	NAD_1983_2011	7,998 of 7,998 Tiles
Horizontal Units	Foot_US	7,998 of 7,998 Tiles
Vertical Datum	NAVD88 height (ftUS)	7,998 of 7,998 Tiles
Vertical Units	Foot_US	7,998 of 7,998 Tiles

✓ Raster		
File Type:	TIF	7,998 of 7,998
Bands:	1	7,998 of 7,998
Grid Size (pixels):	1000 x 1000	7,586 of 7,998
	OTHER	412 of 7,998
Pixel Resolution:	2.00000000' x 2.00000000'	7,998 of 7,998
Pixel Type:	8-bit Unsigned Integer (MINISBLACK)	7,998 of 7,998
Compression:	NONE	7,998 of 7,998
No Data Value:	NONE	7,998 of 7,998

