

Classified Point Cloud

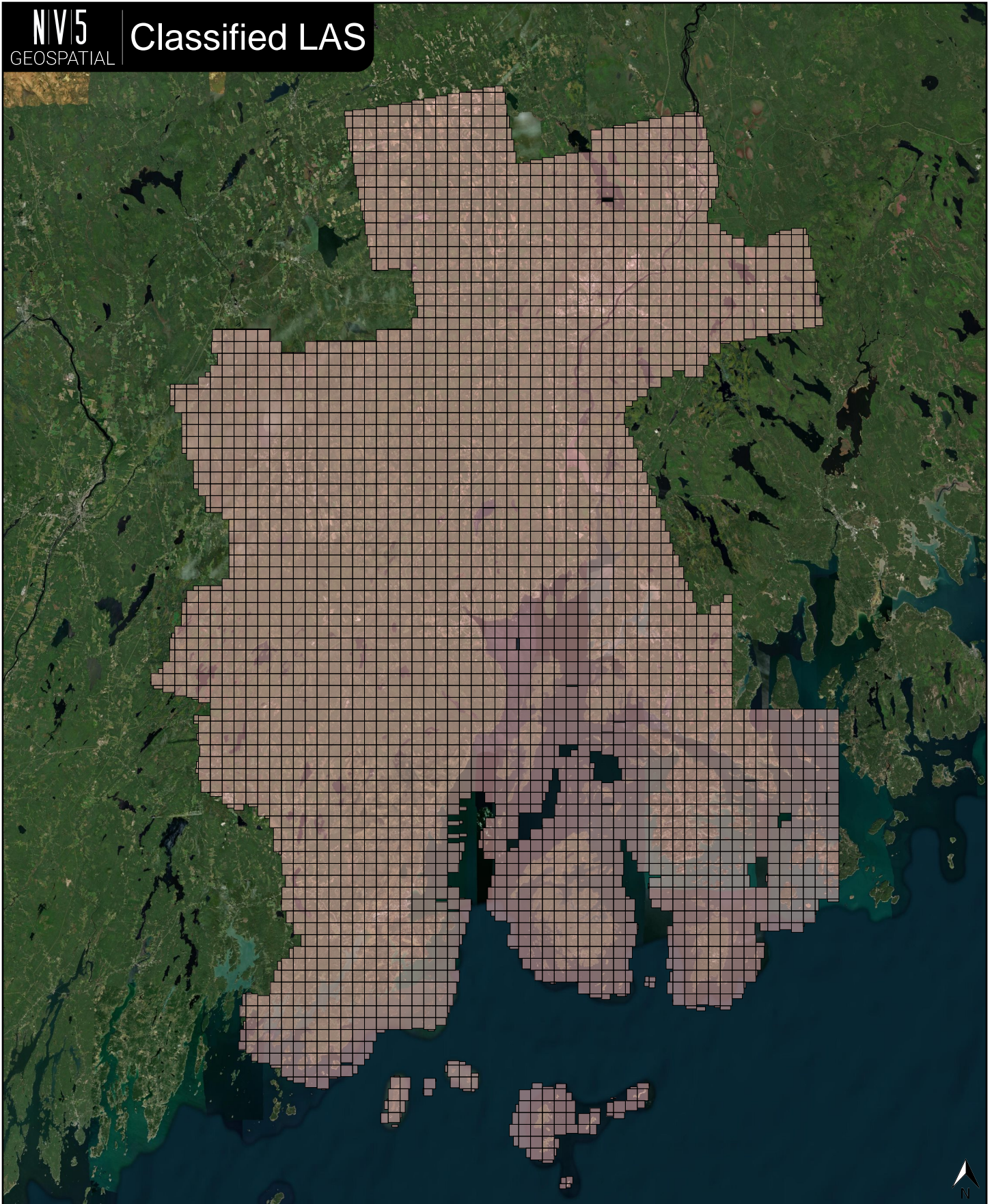
Deliverable 1 Summary

✓ General		
Folder:	E:\ME_MidCoast_2_2021\300071\point_cloud\tilecls	
Total # of Files:	3,328 (All Valid)	
Total File Size:	1.5 TB (1,658,904,060,326 bytes)	
✓ Tile Sizes / Coordinate Ranges		
Median Tile Size:	1,500m x 1,500m	
Minimum Tile Size:	5m x 9m	
Maximum Tile Size:	1,500m x 1,500m	
X Range:	458916.71m to 546000.00m	
Y Range:	4847350.18m to 4986810.90m	
Elevation Range (All Classes):	-1600.23m to 2274.66m	
✓ LAS Version And Point Record Formats		
v1.4, Point Record Format 6	3,328 of 3,328 Tiles	
✓ Spatial Reference System		
Horizontal Projection	NAD83(2011) / UTM zone 19N	3,328 of 3,328 Tiles
Valid OGC Name	Yes	3,328 of 3,328 Tiles
Horizontal Datum	NAD83 (National Spatial Reference System 2011)	3,328 of 3,328 Tiles
Horizontal Units	meter	3,328 of 3,328 Tiles
Vertical Datum	NAVD88 height - Geoid18 (m)	3,328 of 3,328 Tiles
Vertical Units	meter	3,328 of 3,328 Tiles
Vertical USGS-Compliant	Yes	3,328 of 3,328 Tiles
Geoid	Geoid18	3,328 of 3,328 Tiles
Storage Method	WKT	3,328 of 3,328 Tiles
Matches OGC Template	Yes	3,328 of 3,328 Tiles
✓ GPS Time Type		
Adjusted	3,328 of 3,328 Tiles	
✓ File Source ID Equals 0		
Yes	3,328 of 3,328 Tiles	
✓ VLR/EVLR Reserved Equals 0		
Yes	3,328 of 3,328 Records	
✓ Unnecessary Bytes At End Of File		
No	3,328 of 3,328 Tiles	
✓ Legacy Point Count Check		
Zero	3,328 of 3,328 Tiles	
✓ System Identifier		
Merge	3,328 of 3,328 Tiles	

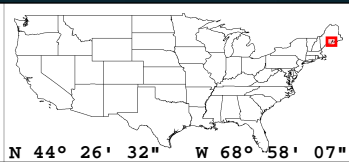
Classified Point Cloud Continued...

Deliverable 1 Summary

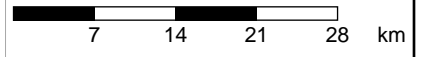
✓ Generating Software	
NV5 Geospatial	3,328 of 3,328 Tiles
✓ Scale Factors	
0.01, 0.01, 0.01	3,328 of 3,328 Tiles



Classified LAS Tiles (3,328)



N 44° 26' 32" W 68° 58' 07"



Scale 1:2,835

1 in = 10.31 mi

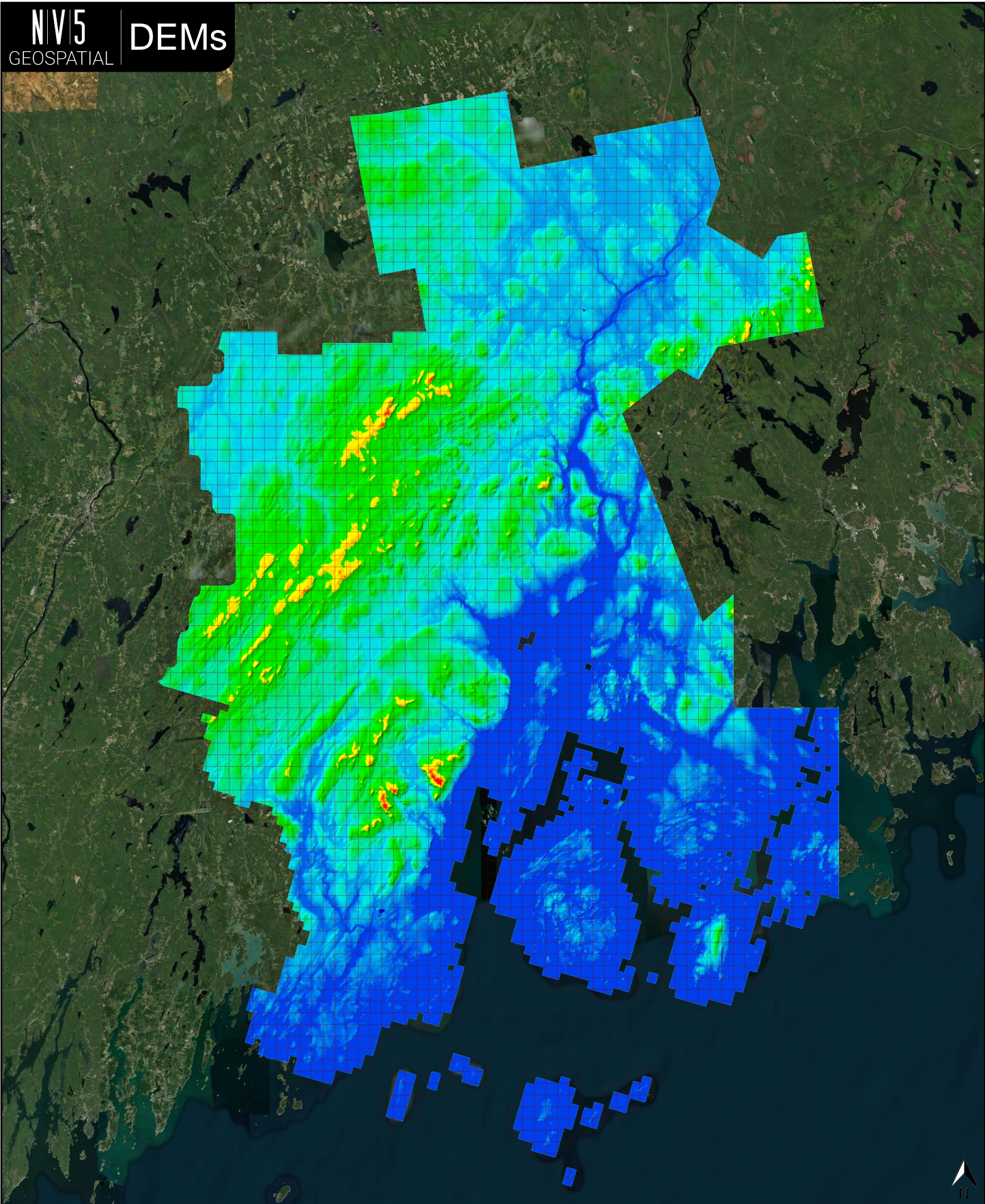


✓ General	
Folder:	E:\ME_MidCoast_2_2021\300071\bare_earth\be_rasters
Total # of Files:	3,332 (All Valid)
Total File Size:	29.3 GB (31,465,528,752 bytes)

✓ Tile Sizes / Coordinate Ranges	
Median Tile Size:	1,500m x 1,500m
Minimum Tile Size:	1,500m x 1,500m
Maximum Tile Size:	1,500m x 1,500m
X Range:	457500.00m to 546000.00m
Y Range:	4846500.00m to 4987500.00m

✓ Spatial Reference System		
Horizontal Projection	NAD83(2011) / UTM zone 19N	3,332 of 3,332 Tiles
Valid OGC Name	Yes	3,332 of 3,332 Tiles
Horizontal Datum	NAD83 (National Spatial Reference System 2011)	3,332 of 3,332 Tiles
Horizontal Units	meter	3,332 of 3,332 Tiles
Vertical Datum	NAVD88 height - Geoid18 (m)	3,332 of 3,332 Tiles
Vertical Units	meter	3,332 of 3,332 Tiles
Vertical USGS-Compliant	Yes	3,332 of 3,332 Tiles
GDAL 2.x Compatible	Yes	3,332 of 3,332 Tiles
Geoid	Geoid18	3,332 of 3,332 Tiles
Matches OGC Template	Yes	3,332 of 3,332 Tiles
GTCitationGeoKey (1026)	NAD83(2011) / UTM zone 19N + NAVD88 height - Geoid18 (m)	3,332 of 3,332 Tiles
VerticalCitationGeoKey (4097)	NAVD88 height - Geoid18 (m)	3,332 of 3,332 Tiles

✓ Raster		
File Type:	TIF	3,332 of 3,332
Bands:	1	3,332 of 3,332
Grid Size (pixels):	1500 x 1500	3,332 of 3,332
Pixel Resolution:	1.00000000m x 1.00000000m	3,332 of 3,332
Pixel Type:	32-bit	3,332 of 3,332
Compression:	None	3,332 of 3,332
No Data Value:	-999999	3,332 of 3,332



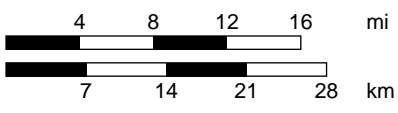
-60.74 m

178.51 m

417.75 m



N 44° 15' 00" W 69° 26' 52"



Scale 1:2,835

1 in = 10.42 mi

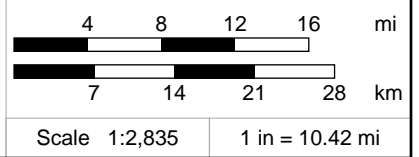
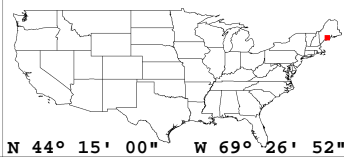
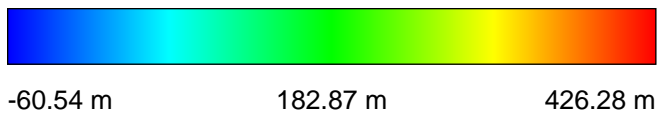
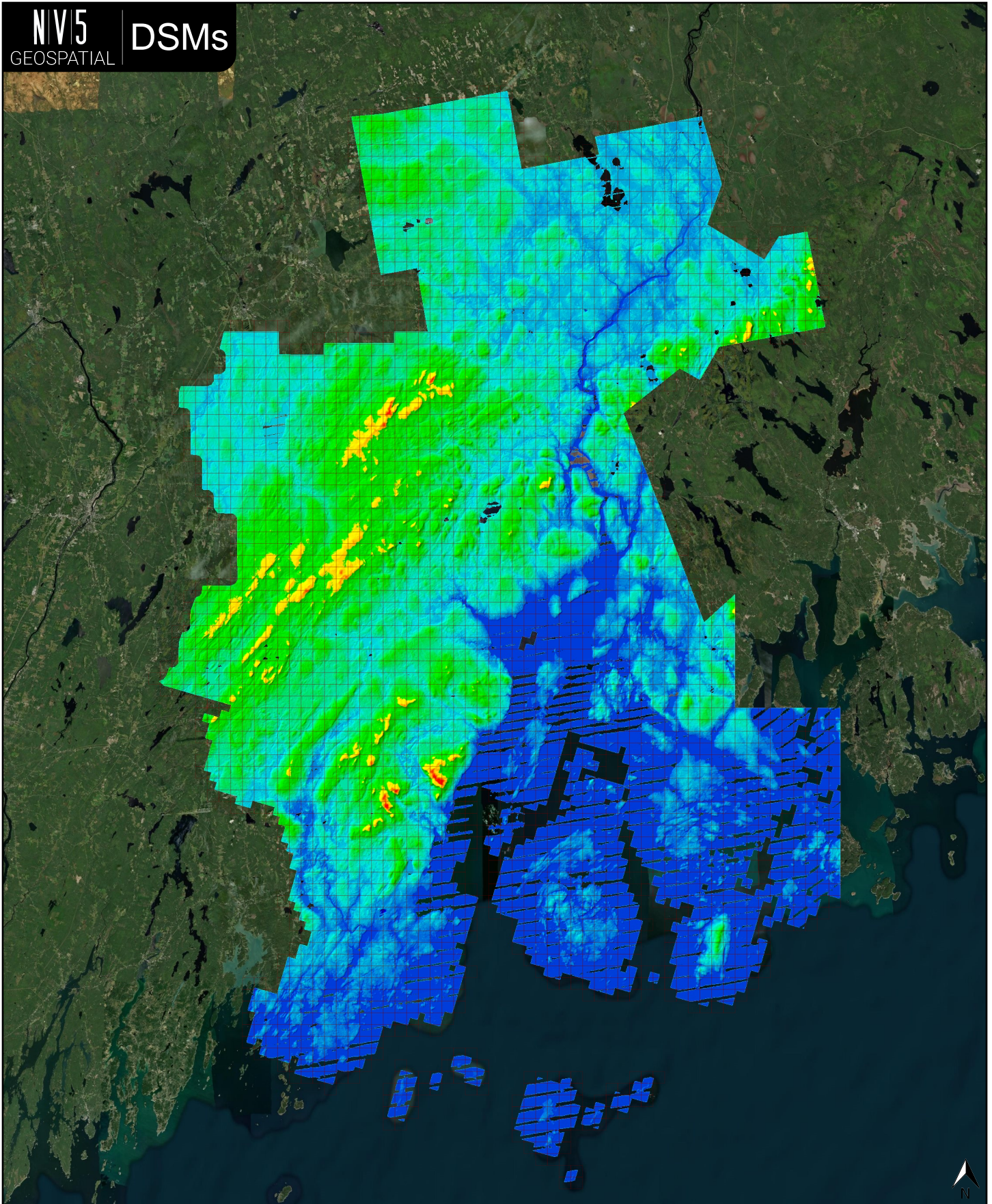


✓ General	
Folder:	E:\ME_MidCoast_2_2021\300071\metadata\spatial_metadata\contractor_provided\maximum_surface_height_raster
Total # of Files:	3,332 (All Valid)
Total File Size:	29.3 GB (31,465,528,752 bytes)

✓ Tile Sizes / Coordinate Ranges	
Median Tile Size:	1,500m x 1,500m
Minimum Tile Size:	1,500m x 1,500m
Maximum Tile Size:	1,500m x 1,500m
X Range:	457500.00m to 546000.00m
Y Range:	4846500.00m to 4987500.00m

✓ Spatial Reference System		
Horizontal Projection	NAD83(2011) / UTM zone 19N	3,332 of 3,332 Tiles
Valid OGC Name	Yes	3,332 of 3,332 Tiles
Horizontal Datum	NAD83 (National Spatial Reference System 2011)	3,332 of 3,332 Tiles
Horizontal Units	meter	3,332 of 3,332 Tiles
Vertical Datum	NAVD88 height - Geoid18 (m)	3,332 of 3,332 Tiles
Vertical Units	meter	3,332 of 3,332 Tiles
Vertical USGS-Compliant	Yes	3,332 of 3,332 Tiles
GDAL 2.x Compatible	Yes	3,332 of 3,332 Tiles
Geoid	Geoid18	3,332 of 3,332 Tiles
Matches OGC Template	Yes	3,332 of 3,332 Tiles
GTCitationGeoKey (1026)	NAD83(2011) / UTM zone 19N + NAVD88 height - Geoid18 (m)	3,332 of 3,332 Tiles
VerticalCitationGeoKey (4097)	NAVD88 height - Geoid18 (m)	3,332 of 3,332 Tiles

✓ Raster		
File Type:	TIF	3,332 of 3,332
Bands:	1	3,332 of 3,332
Grid Size (pixels):	1500 x 1500	3,332 of 3,332
Pixel Resolution:	1.000000000m x 1.000000000m	3,332 of 3,332
Pixel Type:	32-bit	3,332 of 3,332
Compression:	None	3,332 of 3,332
No Data Value:	-999999	3,332 of 3,332

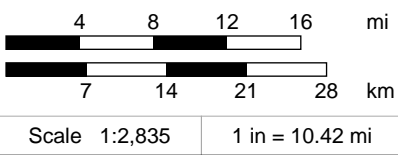
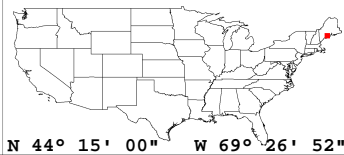
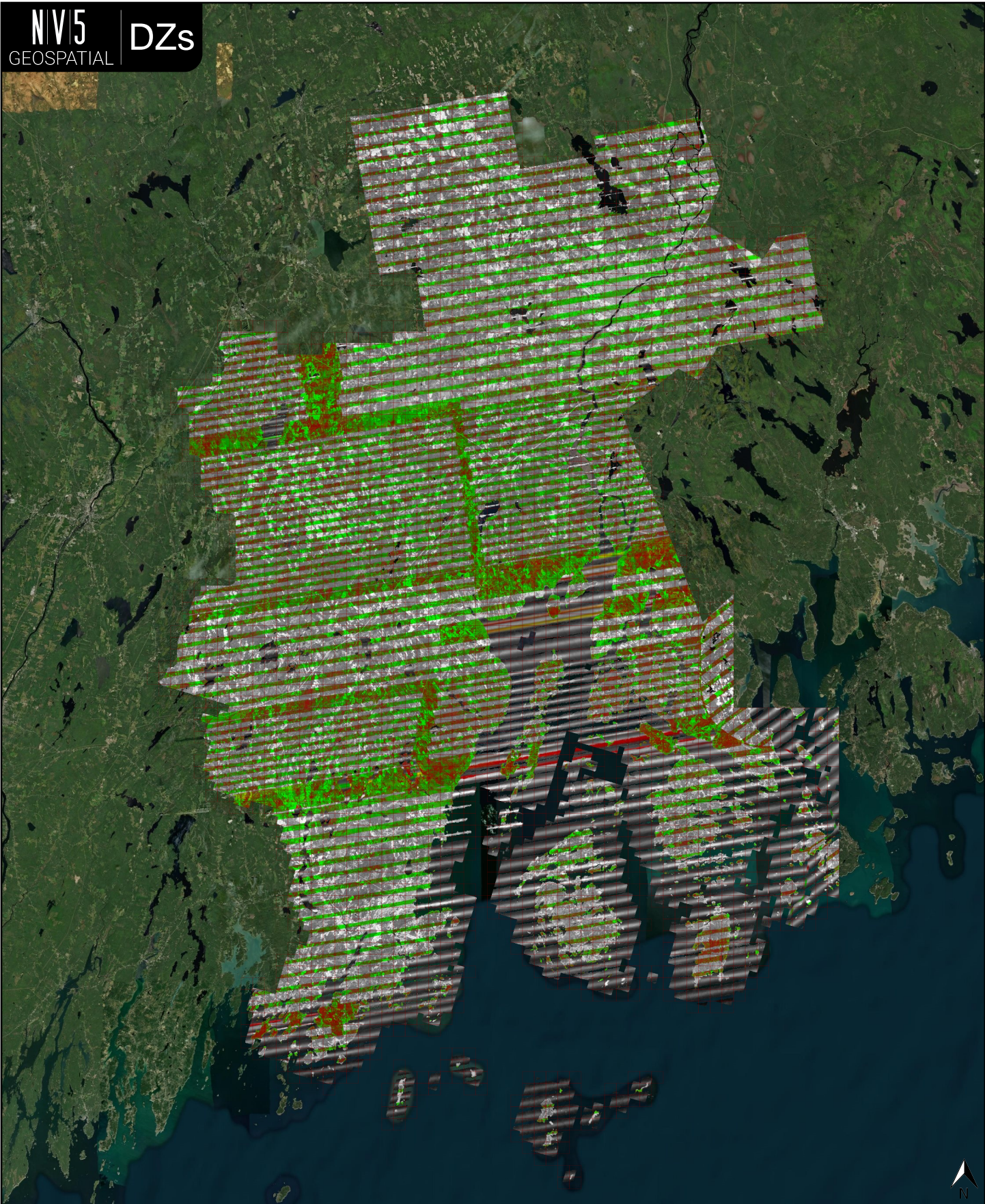


✓ General	
Folder:	E:\ME_MidCoast_2_2021\300071\metadata\spatial_metadata\contractor_provided\swath_separation_images
Total # of Files:	3,332 (All Valid)
Total File Size:	22.0 GB (23,604,304,500 bytes)

✓ Tile Sizes / Coordinate Ranges	
Median Tile Size:	1,500m x 1,500m
Minimum Tile Size:	1,500m x 1,500m
Maximum Tile Size:	1,500m x 1,500m
X Range:	457500.00m to 546000.00m
Y Range:	4846500.00m to 4987500.00m

✓ Spatial Reference System		
Horizontal Projection	NAD83(2011) / UTM zone 19N	3,332 of 3,332 Tiles
Horizontal Datum	NAD83 (National Spatial Reference System 2011)	3,332 of 3,332 Tiles
Horizontal Units	meter	3,332 of 3,332 Tiles
Vertical Datum	NAVD88 height - Geoid18 (m)	3,332 of 3,332 Tiles
Vertical Units	meter	3,332 of 3,332 Tiles
Geoid	Geoid18	3,332 of 3,332 Tiles

✓ Raster		
File Type:	TIF	3,332 of 3,332
Bands:	3	3,332 of 3,332
Grid Size (pixels):	1500 x 1500	3,332 of 3,332
Pixel Resolution:	1.000000000m x 1.000000000m	3,332 of 3,332
Pixel Type:	8-bit (RGB)	3,332 of 3,332
Compression:	NONE	3,332 of 3,332
No Data Value:	0	3,332 of 3,332



✓ General	
Folder:	E:\ME_MidCoast_2_2021\300071\other\intensity_images
Total # of Files:	3,332 (All Valid)
Total File Size:	7.3 GB (7,880,809,748 bytes)

✓ Tile Sizes / Coordinate Ranges	
Median Tile Size:	1,500m x 1,500m
Minimum Tile Size:	1,500m x 1,500m
Maximum Tile Size:	1,500m x 1,500m
X Range:	457500.00m to 546000.00m
Y Range:	4846500.00m to 4987500.00m

✓ Spatial Reference System		
Horizontal Projection	NAD83(2011) / UTM zone 19N	3,332 of 3,332 Tiles
Horizontal Datum	NAD83 (National Spatial Reference System 2011)	3,332 of 3,332 Tiles
Horizontal Units	meter	3,332 of 3,332 Tiles
Vertical Datum	NONE	3,332 of 3,332 Tiles
Vertical Units	NONE	3,332 of 3,332 Tiles
Geoid	NONE	3,332 of 3,332 Tiles

✓ Raster		
File Type:	TIF	3,332 of 3,332
Bands:	1	3,332 of 3,332
Grid Size (pixels):	1500 x 1500	3,332 of 3,332
Pixel Resolution:	1.00000000m x 1.00000000m	3,332 of 3,332
Pixel Type:	8-bit Unsigned Integer (MINISBLACK)	3,332 of 3,332
Compression:	NONE	3,332 of 3,332
No Data Value:	0	3,332 of 3,332

