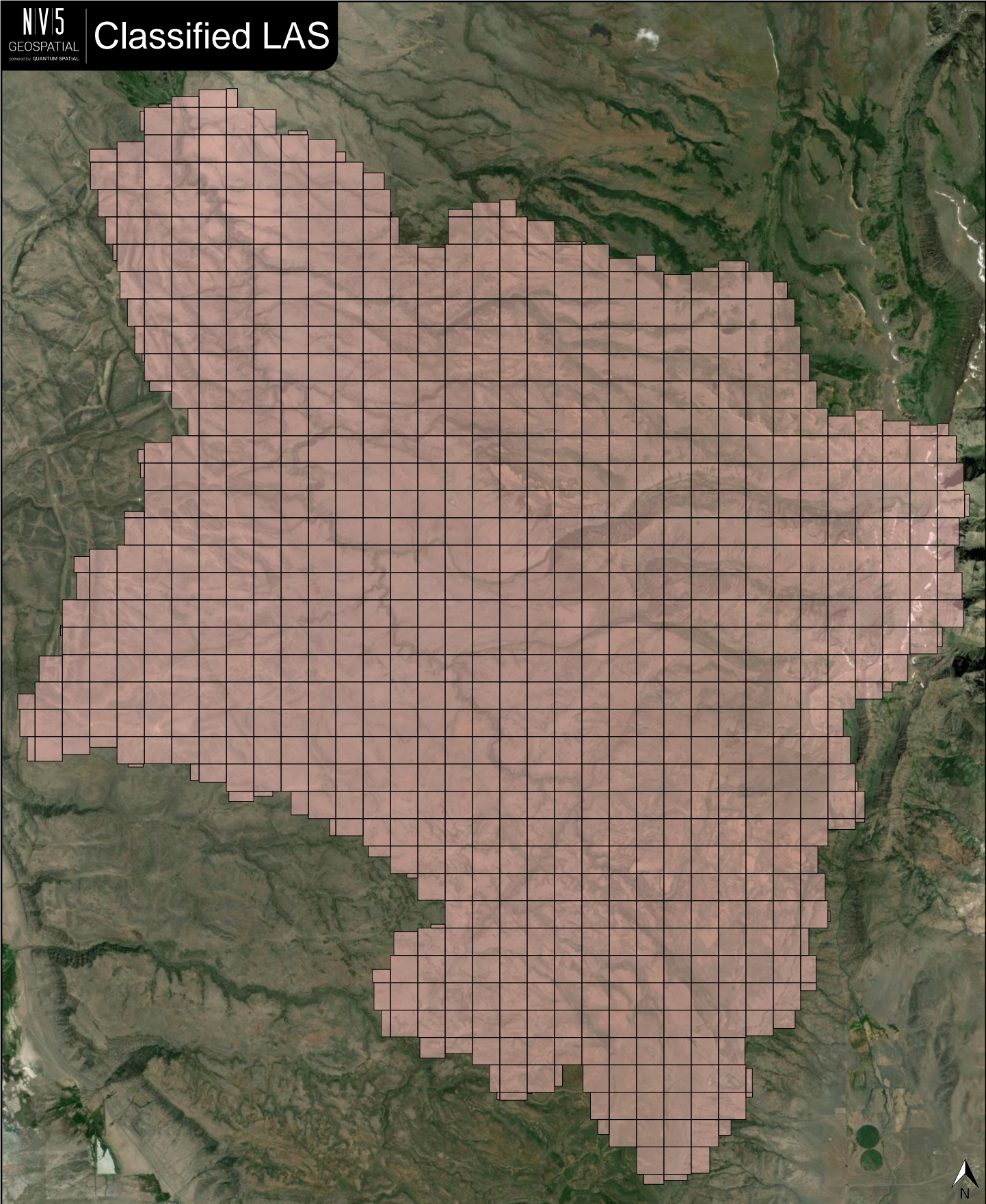


Classified Point Cloud

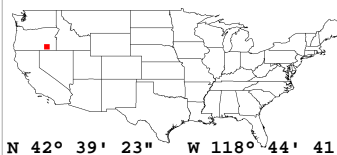
Deliverable 1 Summary

✓ General		
Folder:	E:\183621\OR_NRCSUSGS_4_2019_228999\point_cloud\tilecls	
Total # of Files:	863	(All Valid)
Total File Size:	345.2 GB	(370,647,689,969 bytes)
✓ Tile Sizes / Coordinate Ranges		
Median Tile Size:	3,000' x 3,000'	
Minimum Tile Size:	27' x 100'	
Maximum Tile Size:	3,000' x 3,000'	
X Range:	1732110.96' to 1836539.23'	
Y Range:	271899.85' to 392059.72'	
Elevation Range (All Classes):	3975.03' to 9950.26'	
✓ LAS Version And Point Record Formats		
v1.4, Point Record Format 6		863 of 863 Tiles
✓ Spatial Reference System		
Horizontal Projection	NAD83(2011) / Oregon GIC Lambert (ft)	863 of 863 Tiles
Horizontal Datum	NAD83 (National Spatial Reference System 2011)	863 of 863 Tiles
Horizontal Units	foot	863 of 863 Tiles
Vertical Datum	NAVD88 height (ft) - Geoid12B (ft)	863 of 863 Tiles
Vertical Units	foot	863 of 863 Tiles
Vertical USGS-Compliant	Yes	863 of 863 Tiles
Geoid	Geoid12B	863 of 863 Tiles
Storage Method	WKT	863 of 863 Tiles
Matches OGC Template	Yes	863 of 863 Tiles
✓ GPS Time Type		
Adjusted		863 of 863 Tiles
✓ File Source ID Equals 0		
Yes		863 of 863 Tiles
✓ VLR/EVLR Reserved Equals 0		
Yes		4,315 of 4,315 Records
✓ Unnecessary Bytes At End Of File		
No		863 of 863 Tiles
✓ Legacy Point Count Check		
Zero		863 of 863 Tiles
✓ System Identifier		
Merge		863 of 863 Tiles
✓ Generating Software		
LiDAR Suite		863 of 863 Tiles

Classified LAS



Classified LAS Tiles (863)

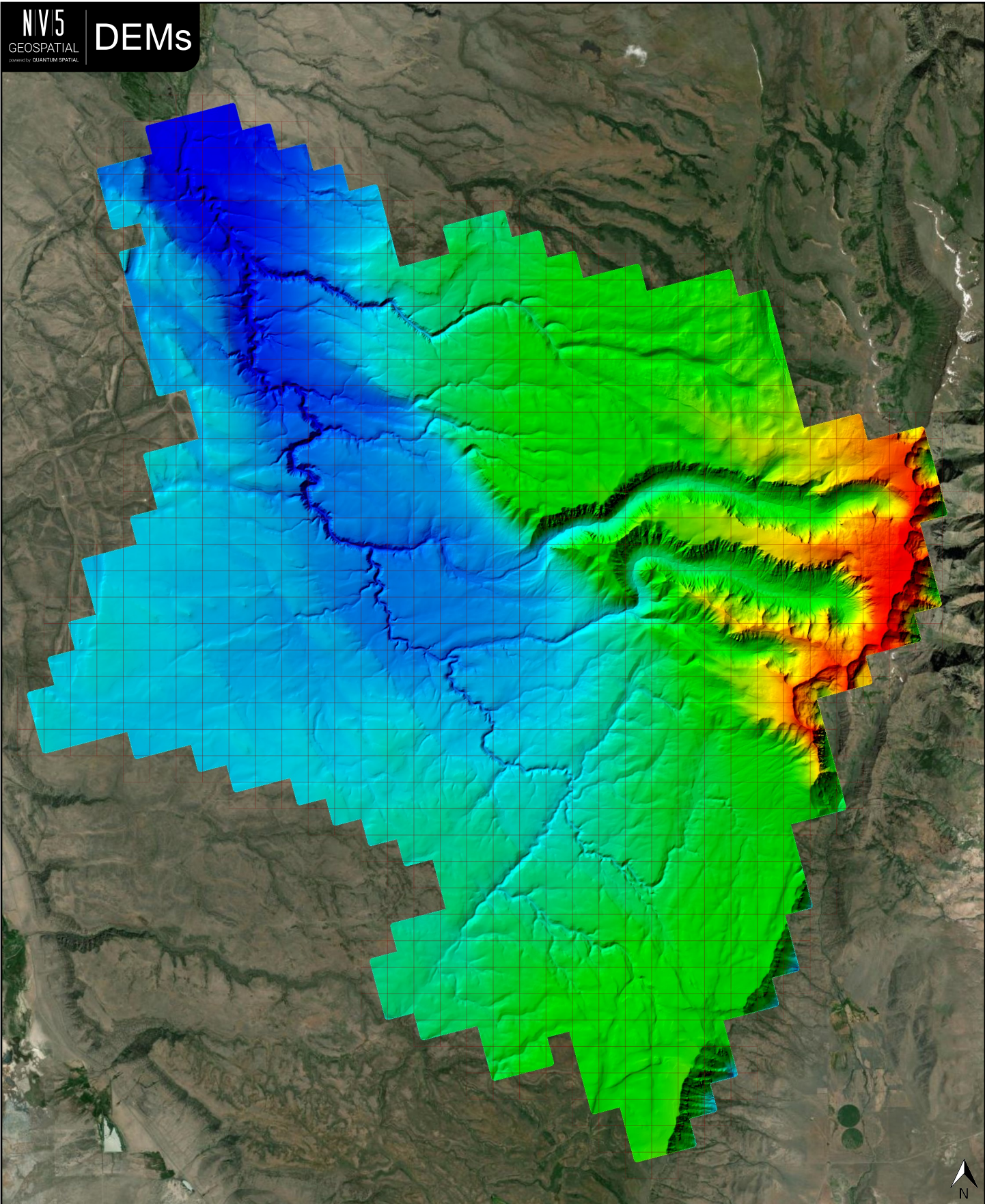


✓ General		
Folder:	E:\183621\OR_NRCSUSGS_4_2019_228999\bare_earth\be_rasters	
Total # of Files:	863	(All Valid)
Total File Size:	3.4 GB	(3,622,996,546 bytes)

✓ Tile Sizes / Coordinate Ranges		
Median Tile Size:	3,000' x 3,000'	
Minimum Tile Size:	3,000' x 3,000'	
Maximum Tile Size:	3,000' x 3,000'	
X Range:	1731000.00' to 1839000.00'	
Y Range:	270000.00' to 393000.00'	

✓ Spatial Reference System		
Horizontal Projection	NAD83(2011) / Oregon GIC Lambert (ft)	863 of 863 Tiles
Horizontal Datum	NAD83 (National Spatial Reference System 2011)	863 of 863 Tiles
Horizontal Units	foot	863 of 863 Tiles
Vertical Datum	NAVD88 height (ft) - Geoid12B (ft)	863 of 863 Tiles
Vertical Units	foot	863 of 863 Tiles
Vertical USGS-Compliant	Yes	863 of 863 Tiles
GDAL 2.x Compatible	Yes	863 of 863 Tiles
Geoid	Geoid12B	863 of 863 Tiles
Matches OGC Template	Yes	863 of 863 Tiles

✓ Raster		
File Type:	TIF	863 of 863
Bands:	1	863 of 863
Grid Size (pixels):	1000 x 1000	863 of 863
Pixel Resolution:	3.00000000' x 3.00000000'	863 of 863
Pixel Type:	32-bit	863 of 863
Compression:	None	863 of 863
No Data Value:	-999999	863 of 863



4221.16 ft

6973.46 ft

9725.76 ft



N 42° 37' 54" W 118° 55' 39"



Scale 1:864

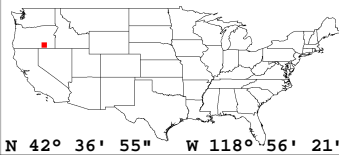
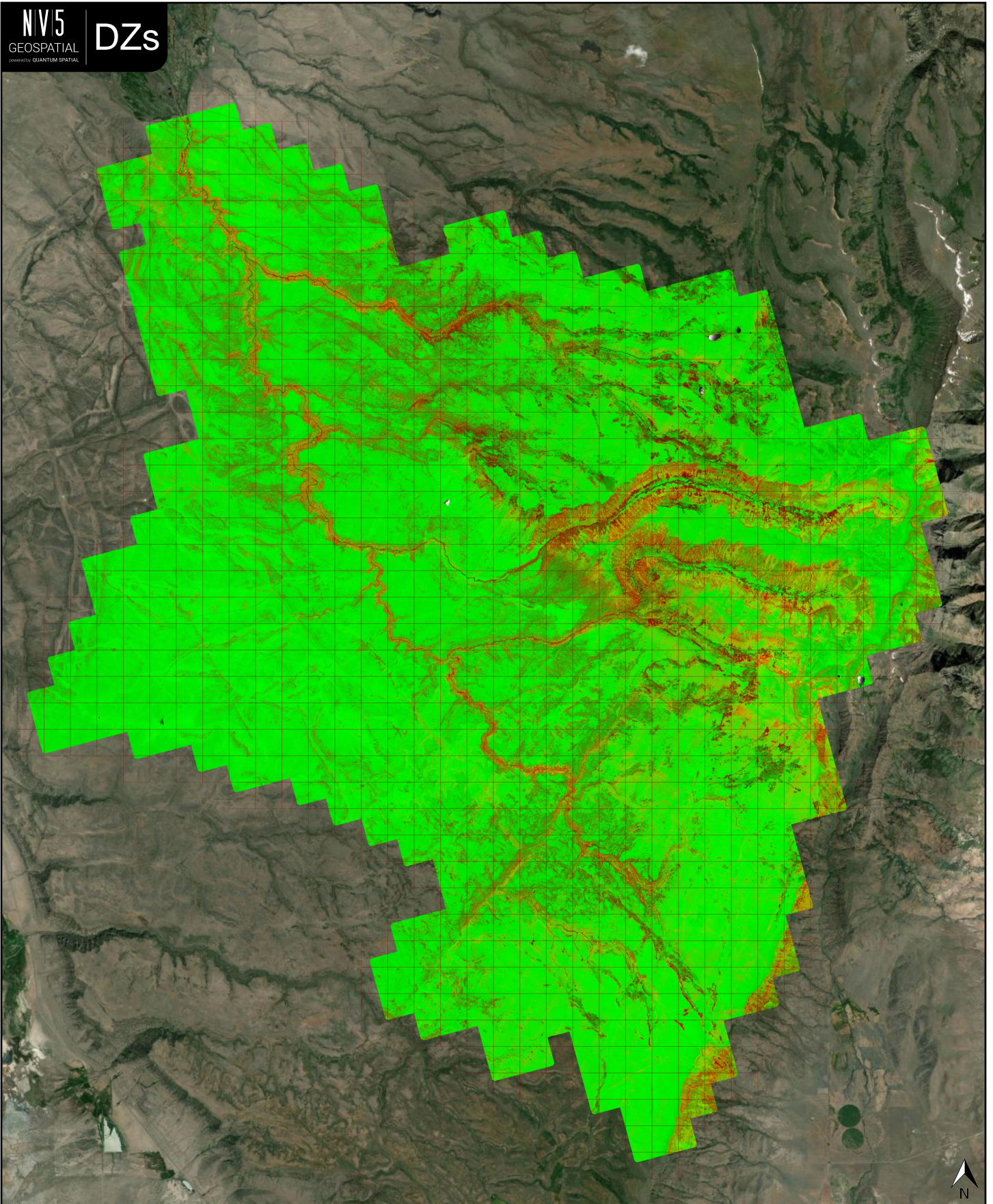
1 in = 2.82 mi

✓ General	
Folder:	E:\183621\OR_NRCSUSGS_4_2019_228999\metadata\spatial_metadata\contractor_provided\swath_separation_images
Total # of Files:	863 (All Valid)
Total File Size:	2.5 GB (2,716,405,553 bytes)

✓ Tile Sizes / Coordinate Ranges	
Median Tile Size:	3,000' x 3,000'
Minimum Tile Size:	3,000' x 3,000'
Maximum Tile Size:	3,000' x 3,000'
X Range:	1731000.00' to 1839000.00'
Y Range:	270000.00' to 393000.00'

✓ Spatial Reference System		
Horizontal Projection	NAD83(2011) / Oregon GIC Lambert (ft)	863 of 863 Tiles
Horizontal Datum	NAD83 (National Spatial Reference System 2011)	863 of 863 Tiles
Horizontal Units	foot	863 of 863 Tiles
Vertical Datum	NAVD88 height (ft) - Geoid12B (ft)	863 of 863 Tiles
Vertical Units	foot	863 of 863 Tiles
Geoid	Geoid12B	863 of 863 Tiles

✓ Raster		
File Type:	TIF	863 of 863
Bands:	3	863 of 863
Grid Size (pixels):	1000 x 1000	863 of 863
Pixel Resolution:	3.00000000' x 3.00000000'	863 of 863
Pixel Type:	8-bit (RGB)	863 of 863
Compression:	NONE	863 of 863
No Data Value:	0	863 of 863



✓ General	
Folder:	E:\183621\OR_NRCSUSGS_4_2019_228999\other\intensity
Total # of Files:	863 (All Valid)
Total File Size:	864.6 MB (906,568,555 bytes)

✓ Tile Sizes / Coordinate Ranges	
Median Tile Size:	3,000' x 3,000'
Minimum Tile Size:	3,000' x 3,000'
Maximum Tile Size:	3,000' x 3,000'
X Range:	1731000.00' to 1839000.00'
Y Range:	270000.00' to 393000.00'

✓ Spatial Reference System		
Horizontal Projection	NAD83(2011) / Oregon GIC Lambert (ft)	863 of 863 Tiles
Horizontal Datum	NAD83 (National Spatial Reference System 2011)	863 of 863 Tiles
Horizontal Units	foot	863 of 863 Tiles
Vertical Datum	NAVD88 height (ft) - Geoid12B (ft)	863 of 863 Tiles
Vertical Units	foot	863 of 863 Tiles
Geoid	Geoid12B	863 of 863 Tiles

✓ Raster		
File Type:	TIF	863 of 863
Bands:	1	863 of 863
Grid Size (pixels):	1000 x 1000	863 of 863
Pixel Resolution:	3.00000000' x 3.00000000'	863 of 863
Pixel Type:	8-bit Unsigned Integer (MINISBLACK)	863 of 863
Compression:	NONE	863 of 863
No Data Value:	0	863 of 863

